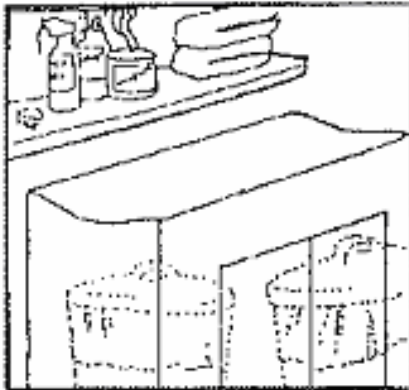


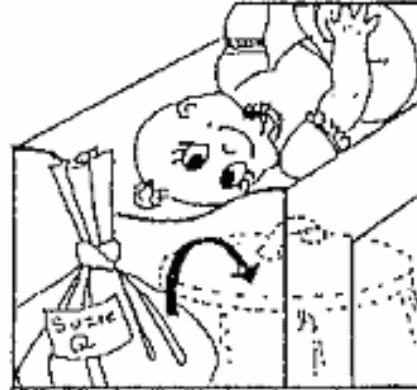
# DIAPER CHANGING

***A child's diaper shall be changed as soon as it is soiled.***

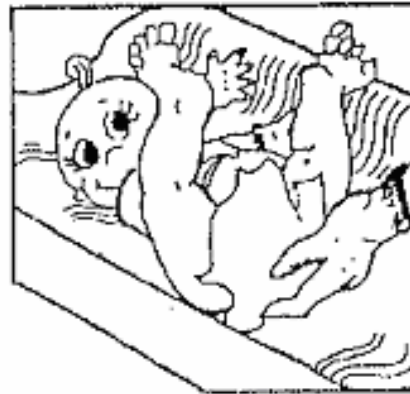


1. Diaper change surface shall be nonabsorbent, seamless and smooth, and kept clear of items not required for diaper change.

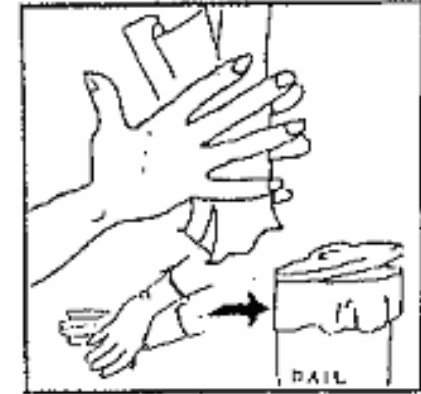
Wash hands with antibacterial soap and water. **WASH AWAY GERMS** before each diaper change! **Put on disposable gloves.**



2. Place child on surface. Remove soiled diaper/clothing. Place soiled diaper into a covered, plastic lined container. Place soiled clothing into a labeled plastic bag and keep in a plastic lined container (for this purpose only) until pick-up.



3. Clean child's bottom with disposable wipe. Throw soiled wipe into the soiled diaper container.



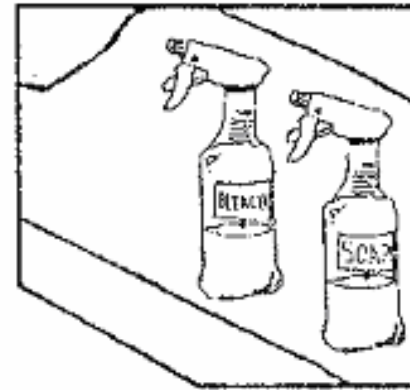
4. Remove Gloves and throw away in the soiled diaper container. Use disposable wipe to further clean your hands, if needed. (Limit touching the environment or supplies with gloved hands.)



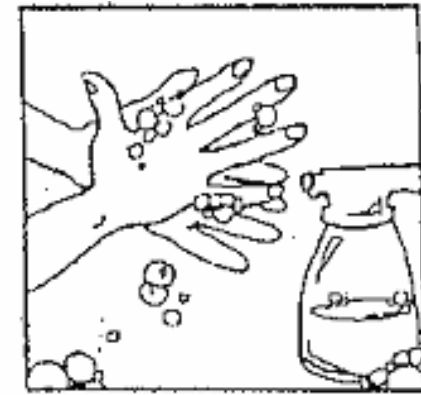
5. After removing the contaminated gloves, put a clean diaper on the child and dress the child.



6. Wash the CHILD'S hands (regardless of age) with running water and antibacterial soap. Return the child to the activity area or crib.



7. Clean the diaper changing area with soap and water, and sanitize with bleach solution, using single use paper towels.



8. Wash YOUR hands with antibacterial soap and water. **WASH AWAY GERMS!** Be sure to note the diaper change on the dated log.