

# WIC Caseload



Presented by: Linda Yee

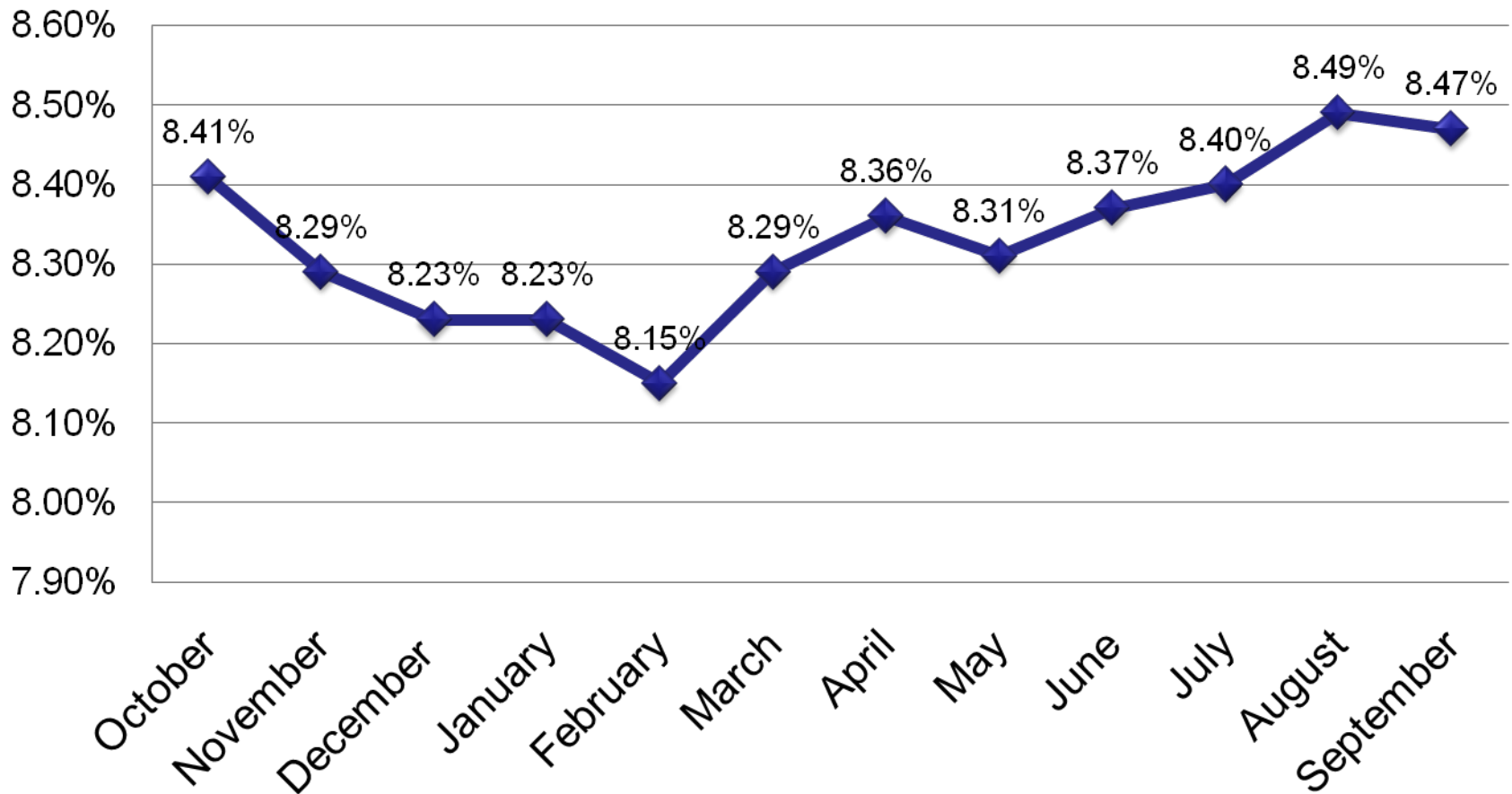


Bureau of USDA Nutrition Programs

Leadership for a Healthy Arizona



# Historical distribution of caseload by month

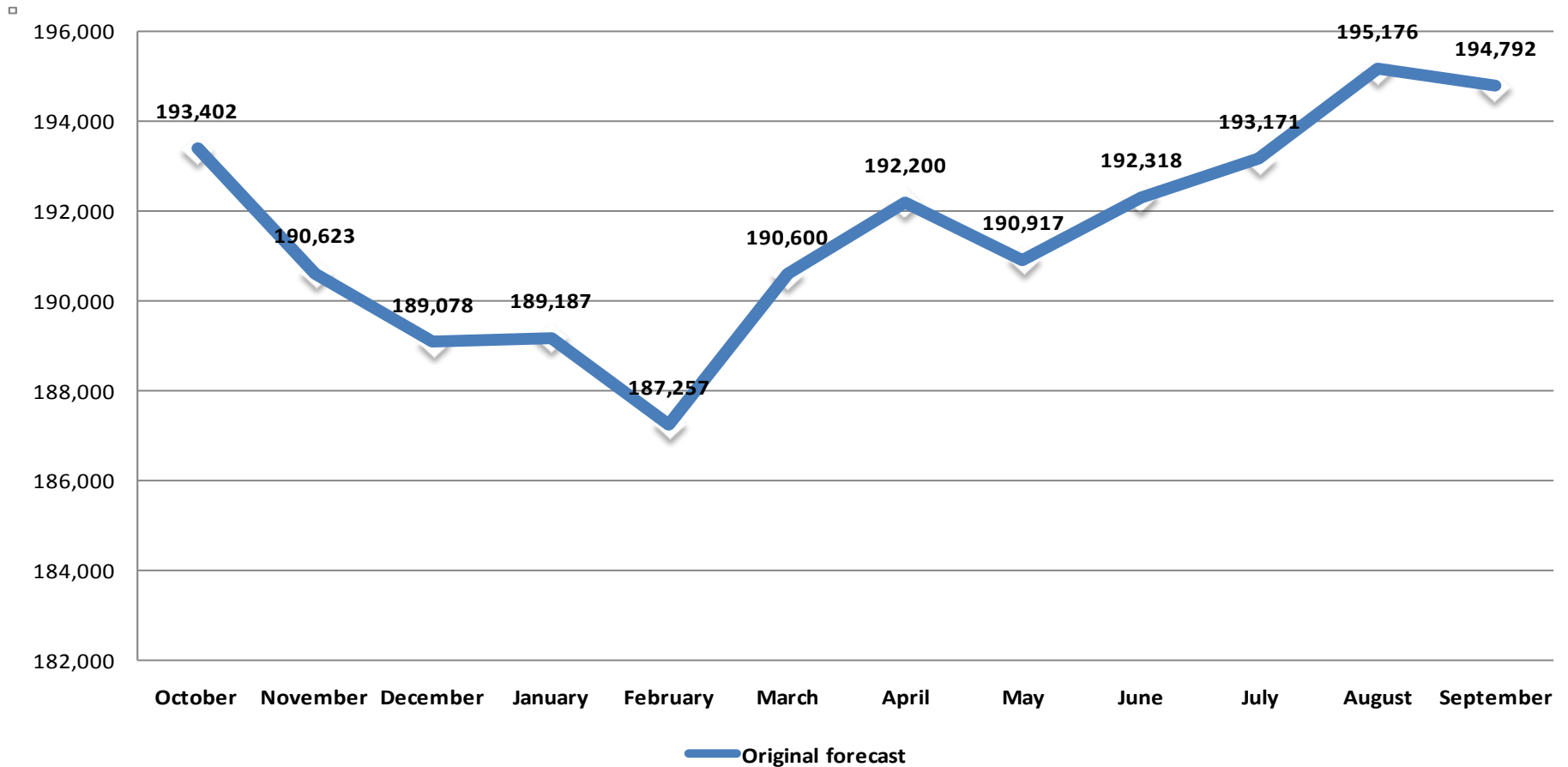


Bureau of USDA Nutrition Programs

Leadership for a Healthy Arizona



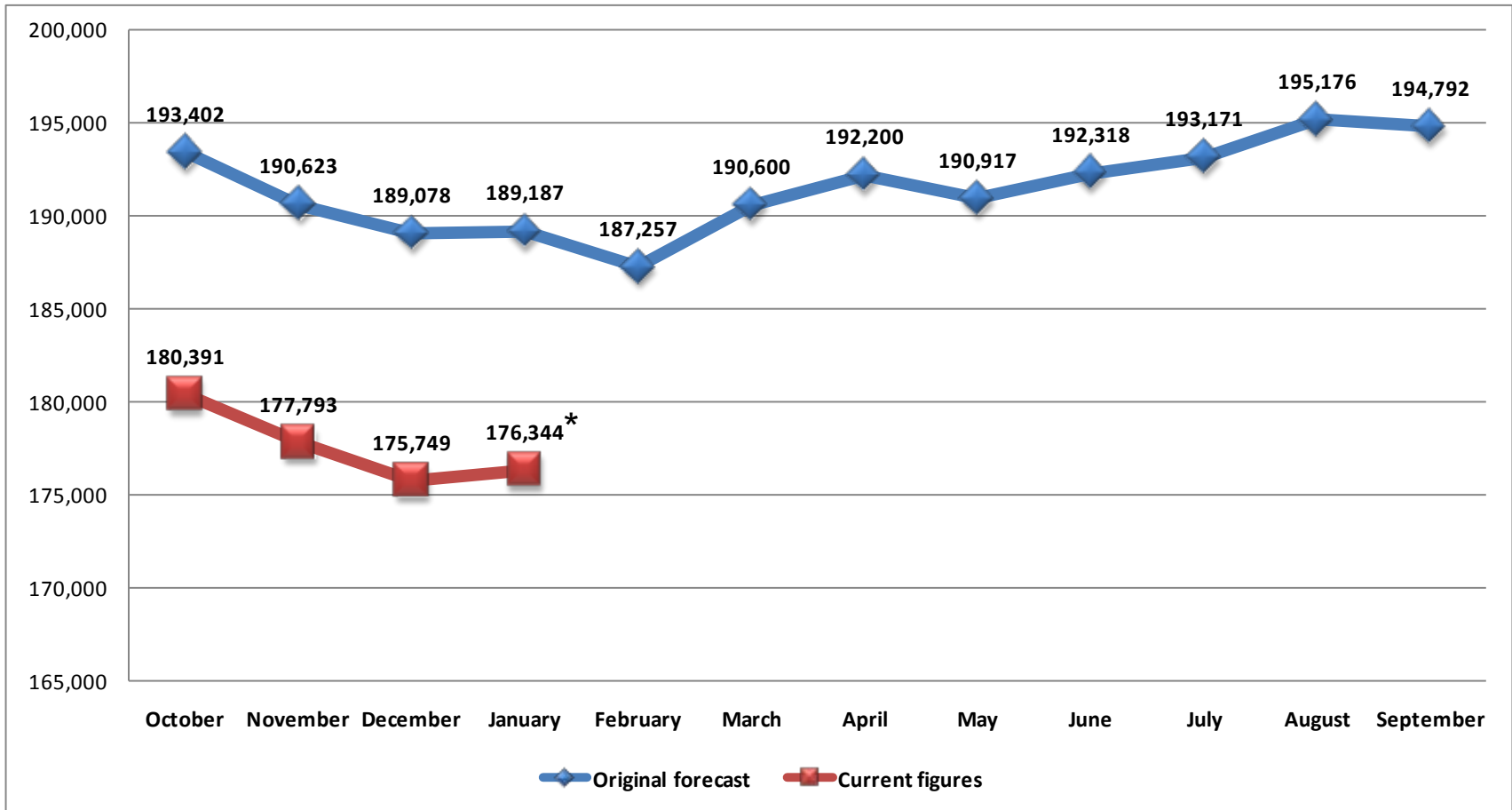
# Original forecast at 191,560 statewide caseload



Bureau of USDA Nutrition Programs  
Leadership for a Healthy Arizona



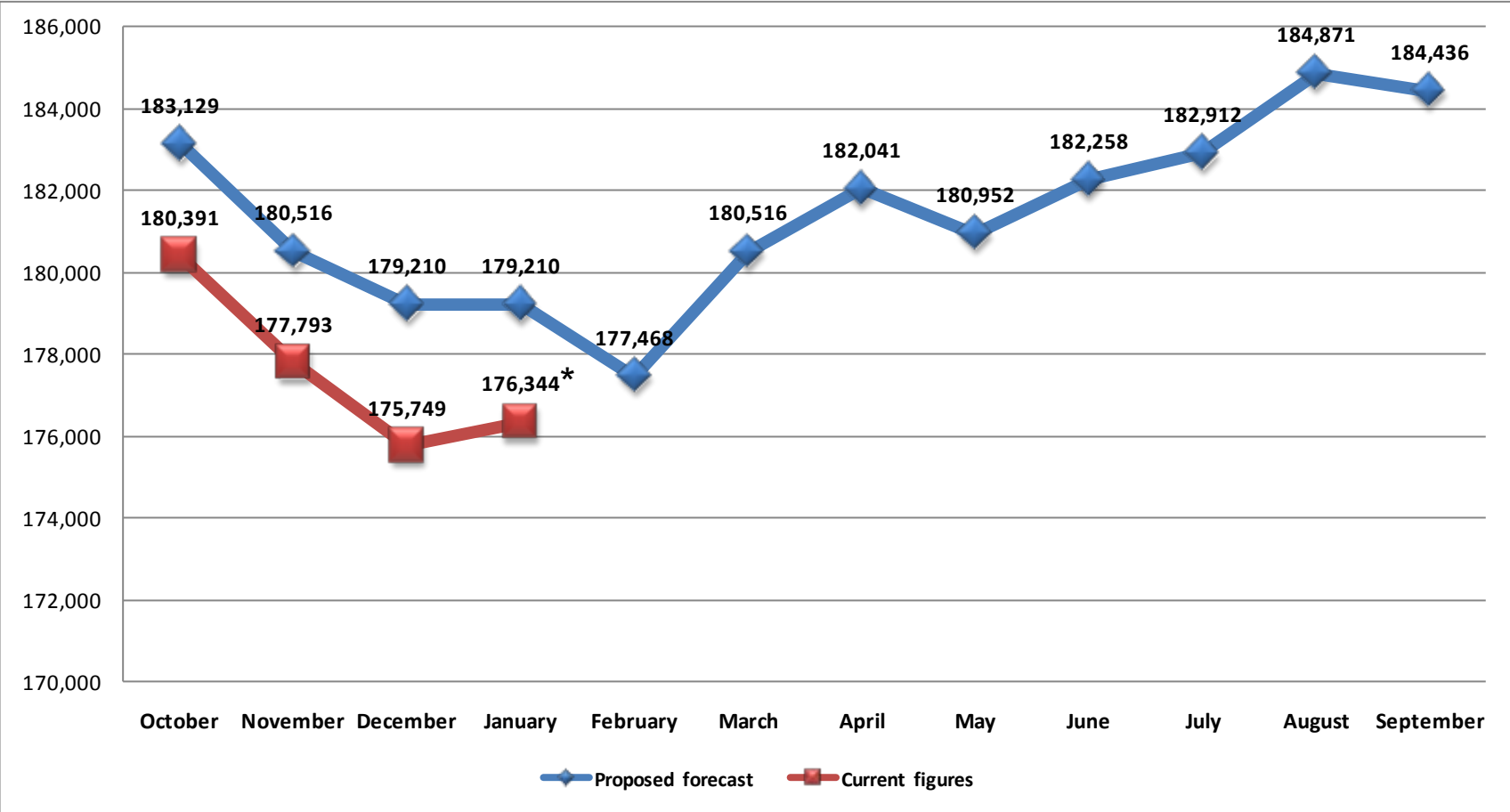
# Original forecast at 191,560 statewide caseload



\*Jan figure as of 2/7/2011



# Proposed forecast at 181,460 statewide caseload



\*Jan figure as of 2/7/2011



# Projected Caseload Comparison

	FY 11 Statewide MONTHLY Caseload	October	November	December	January	February	March	April	May	June	July	August	September	FY 11 Statewide ANNUAL Caseload
State Forecasted 3-Yr Weighted Avg Distribution		8.41%	8.29%	8.23%	8.23%	8.15%	8.29%	8.36%	8.31%	8.37%	8.40%	8.49%	8.47%	100%
Original Forecasted Caseload	191,560	193,402	190,623	189,078	189,187	187,257	190,600	192,200	190,917	192,318	193,171	195,176	194,792	2,298,721
Current Caseload		180,391	177,793	175,749	176,344*									
NEW Proposed Caseload	181,460	183,129	180,516	179,210	179,210	177,468	180,516	182,041	180,952	182,258	182,912	184,871	184,436	2,177,520

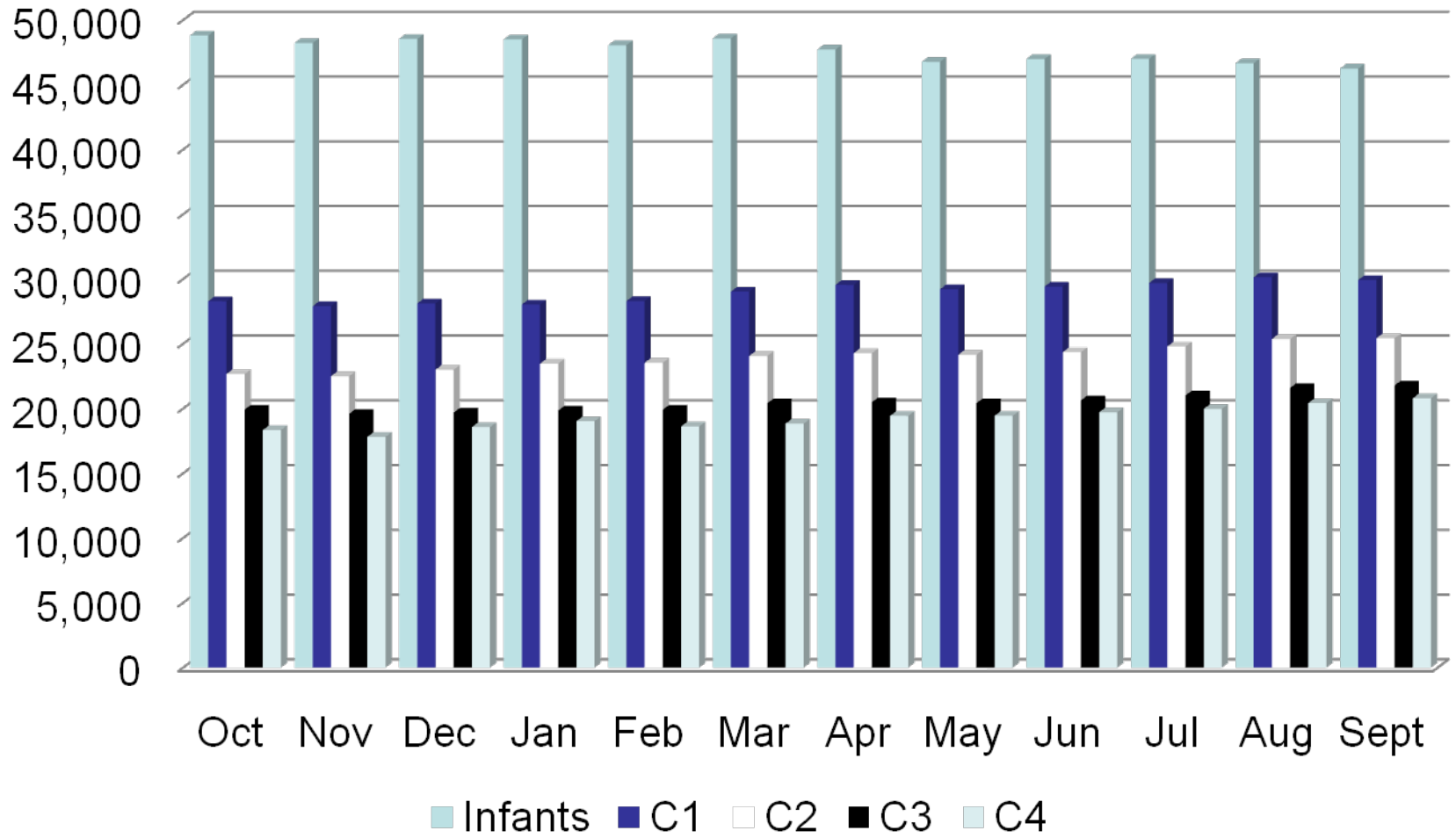
\*Jan figure as of 2/7/2011

Bureau of USDA Nutrition Programs

Leadership for a Healthy Arizona



# FY 09 Participation by Category

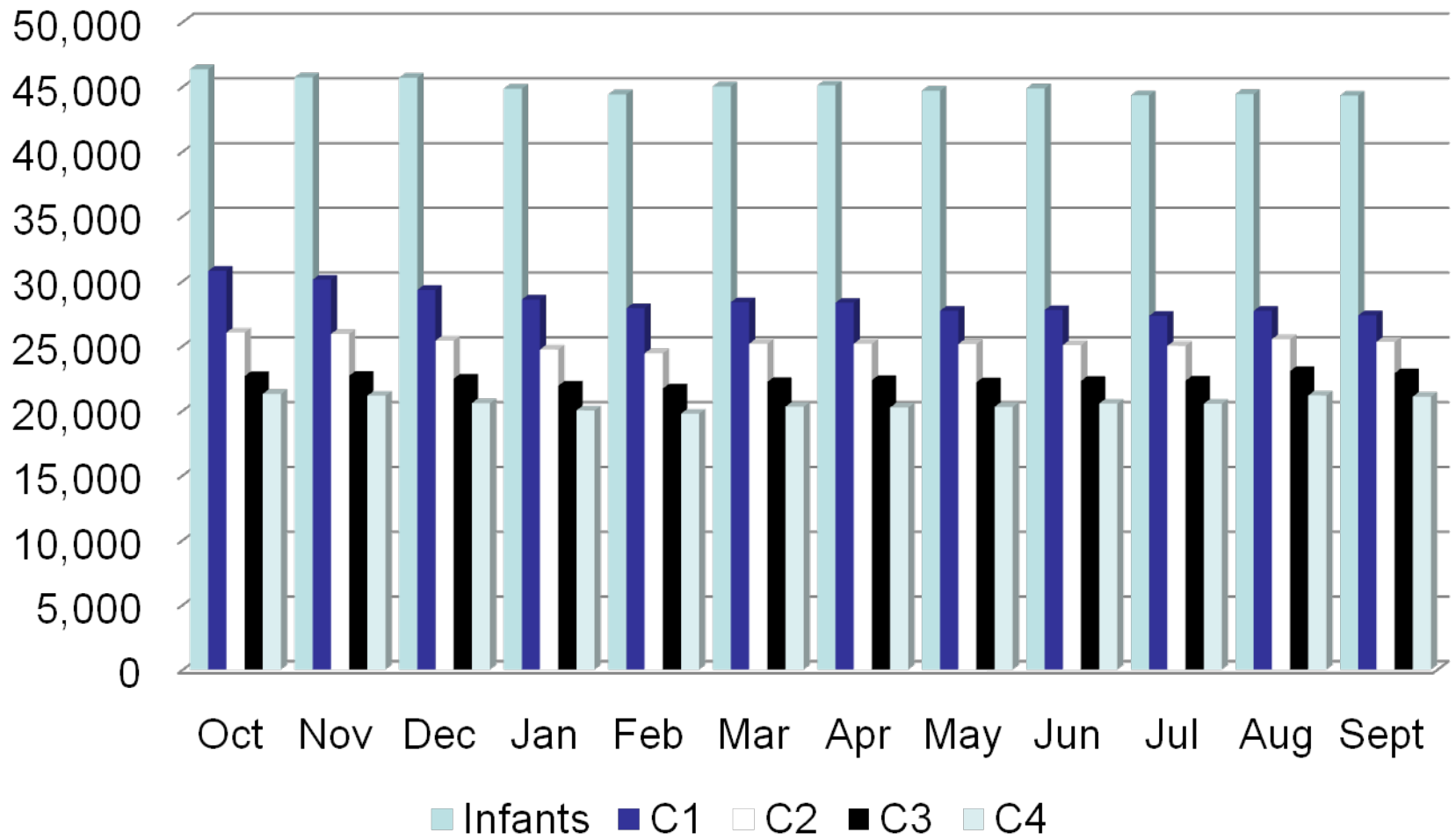


Bureau of USDA Nutrition Programs

Leadership for a Healthy Arizona



# FY 10 Participation by Category

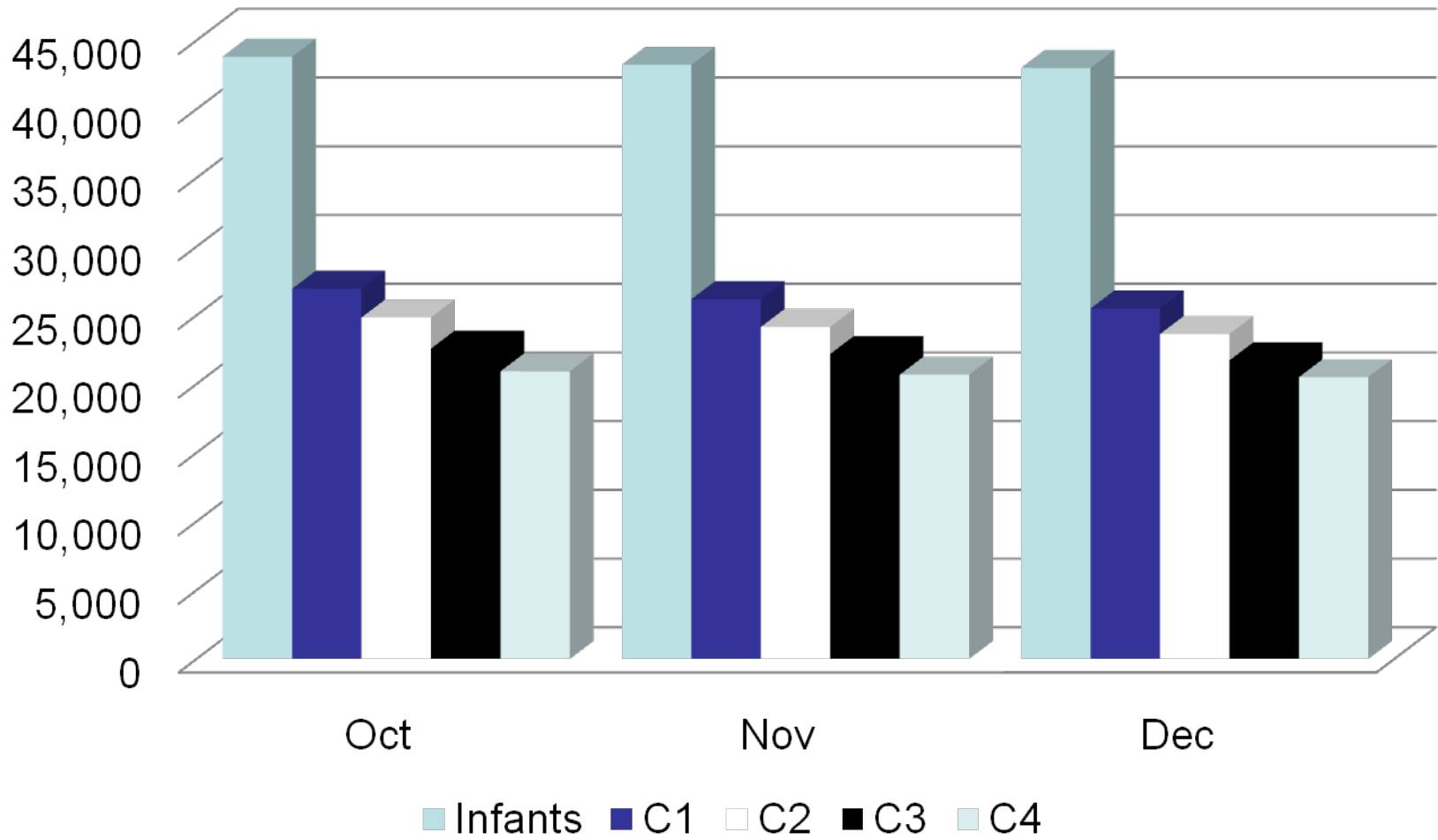


Bureau of USDA Nutrition Programs

Leadership for a Healthy Arizona



# FY 11 Participation by Category



Bureau of USDA Nutrition Programs

Leadership for a Healthy Arizona

