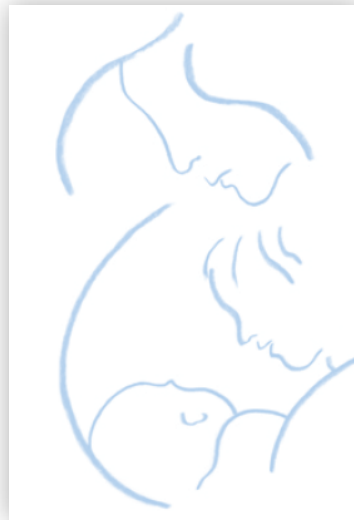


Pediatric and Pregnancy Surveillance Systems (PedNSS and PNSS)

2010 Arizona Data



Bureau of Nutrition and Physical Activity

Leadership for a Healthy Arizona



PedNSS & PNSS Data

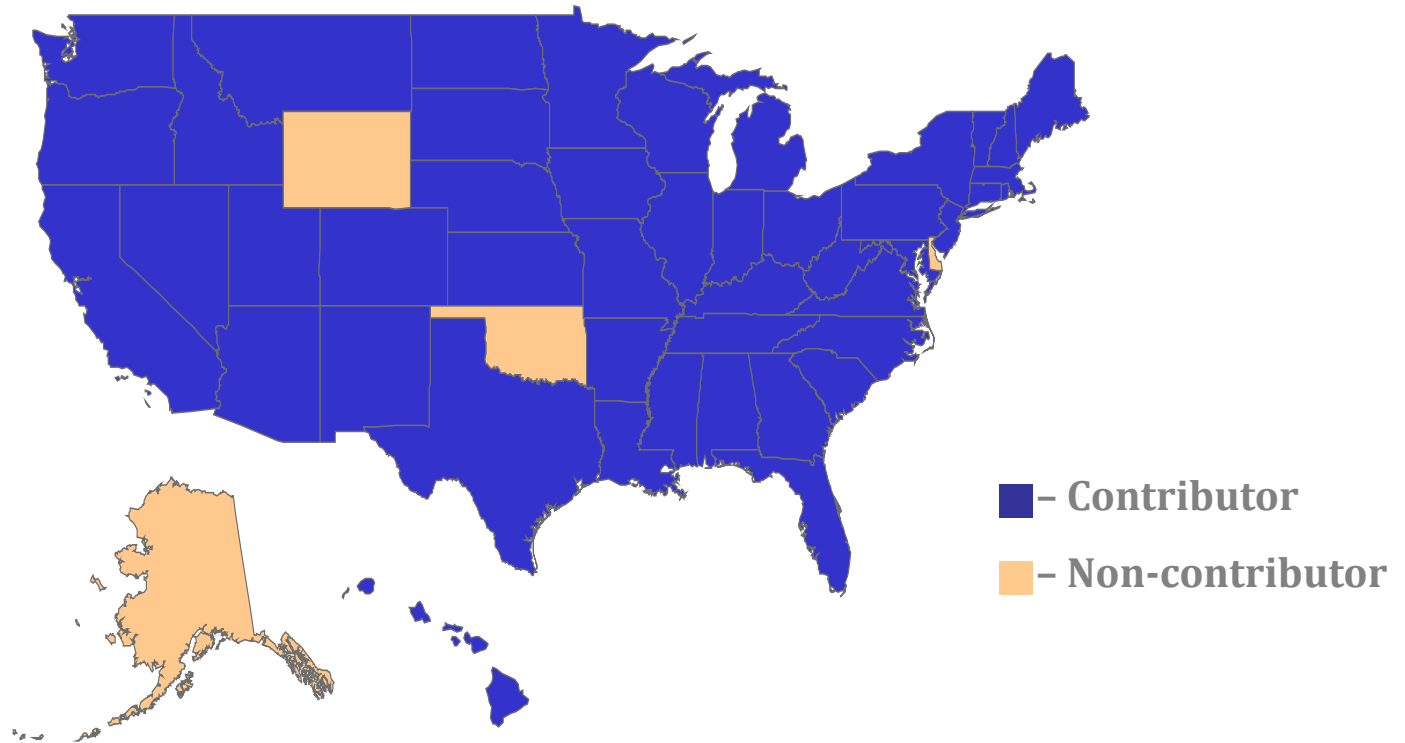
- CDC surveillance systems containing nutrition data on low-income pregnant women and children up to 5 years
- AZ Data Source: 100% WIC
- AIM data submitted to CDC quarterly
- Annual reports for health and nutrition indicators
 - Data at national, state, local agency levels

Bureau of Nutrition and Physical Activity

Leadership for a Healthy Arizona



2010 PedNSS/PNSS Contributors

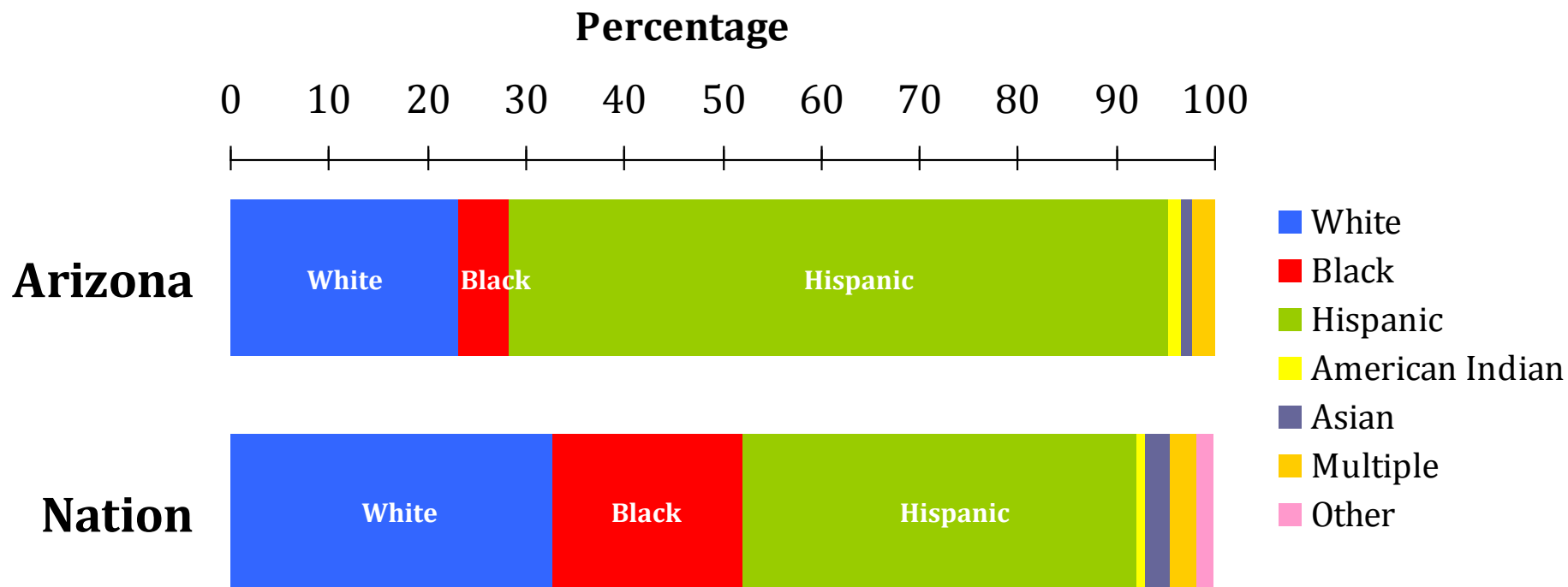


Bureau of Nutrition and Physical Activity

Leadership for a Healthy Arizona



Race/Ethnicity of PedNSS Children

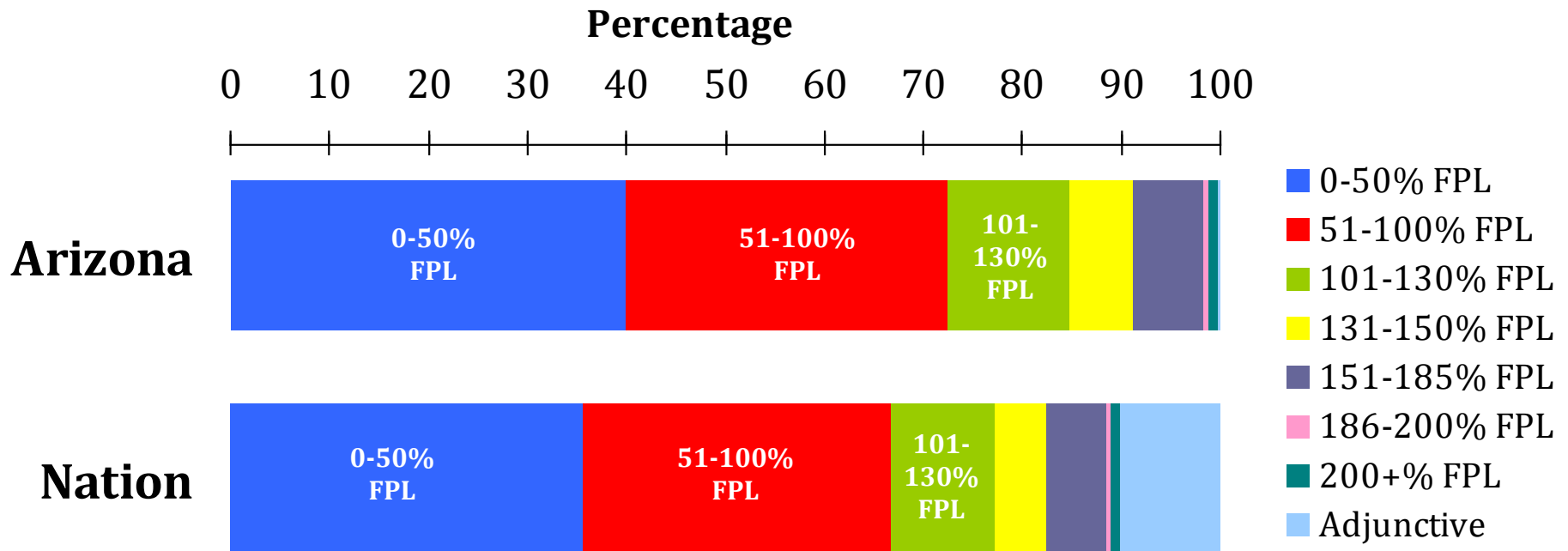


Bureau of Nutrition and Physical Activity

Leadership for a Healthy Arizona



Income of PedNSS Families



Bureau of Nutrition and Physical Activity

Leadership for a Healthy Arizona



What is in PedNSS?

DEMOGRAPHIC INFO

- Clinic and local agency
- Age
- Sex
- Race/ethnicity
- Household size and monthly income (calculate % FPL)
- Adjunctive eligibility

HEALTH & NUTRITION DATA

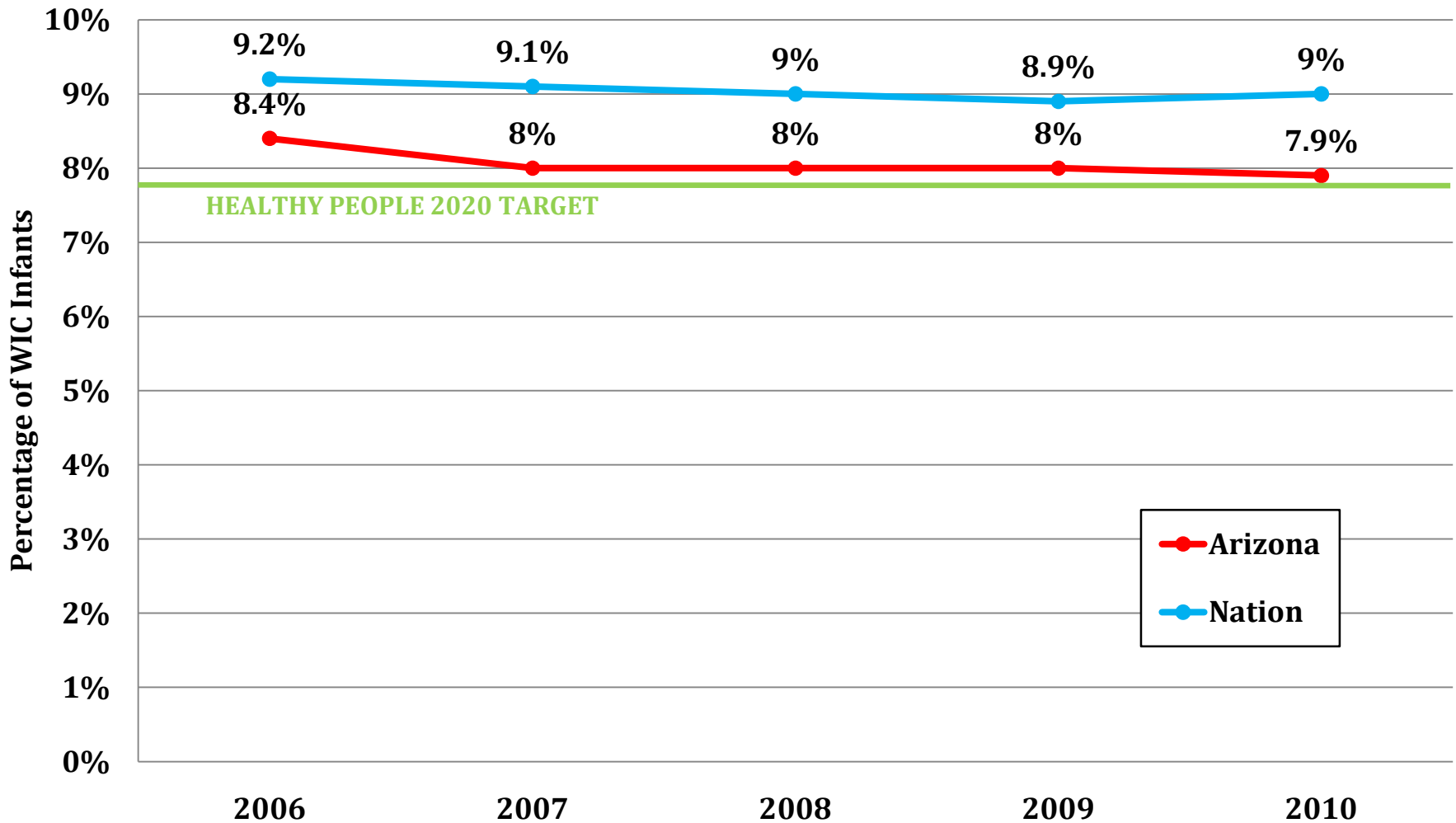
- Birthweight
- Height
- Weight
- Hemoglobin
- Breastfeeding information
 - Ever BF
 - Currently BF
 - Duration of BF
- Household smoking

Bureau of Nutrition and Physical Activity

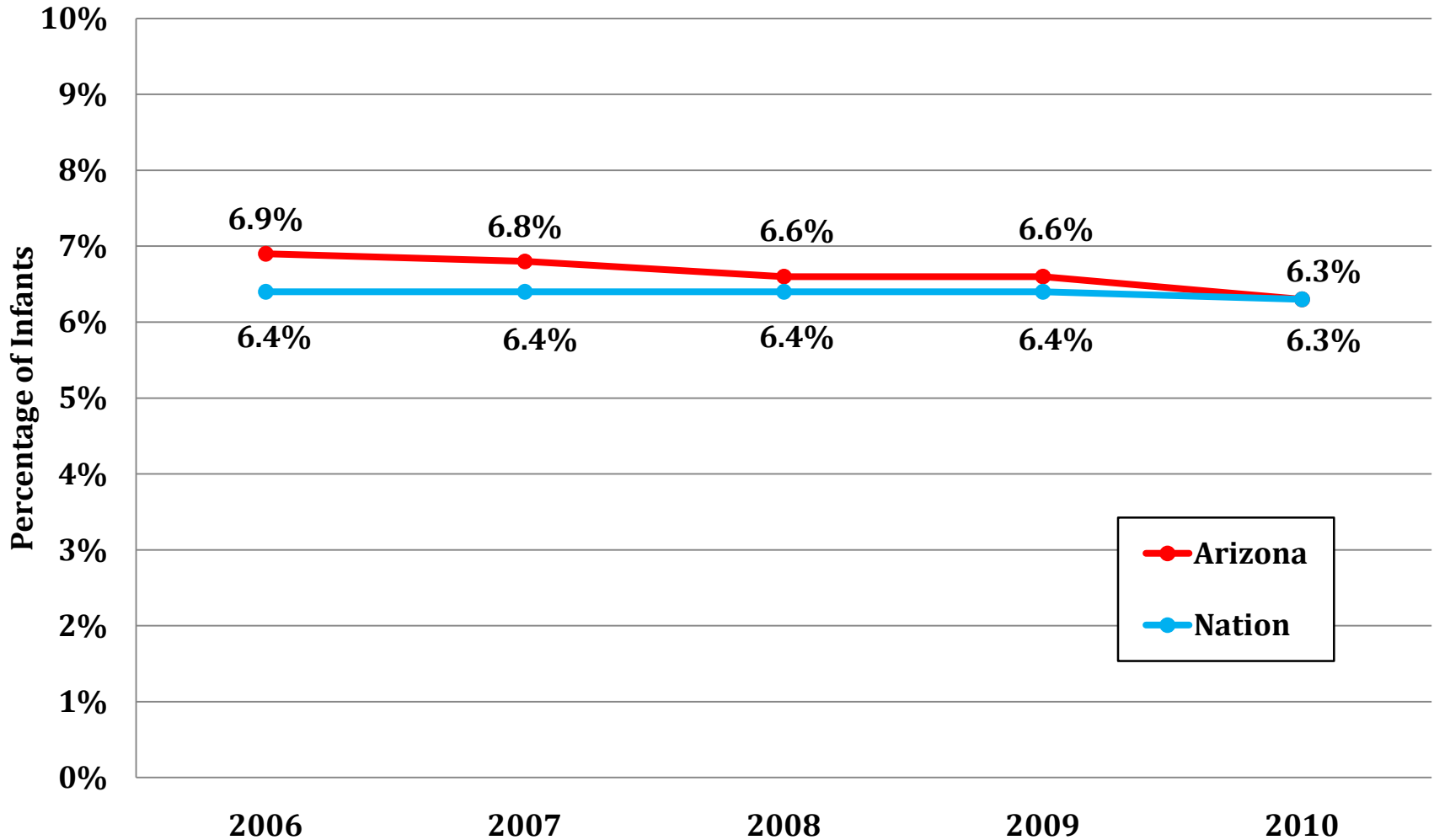
Leadership for a Healthy Arizona



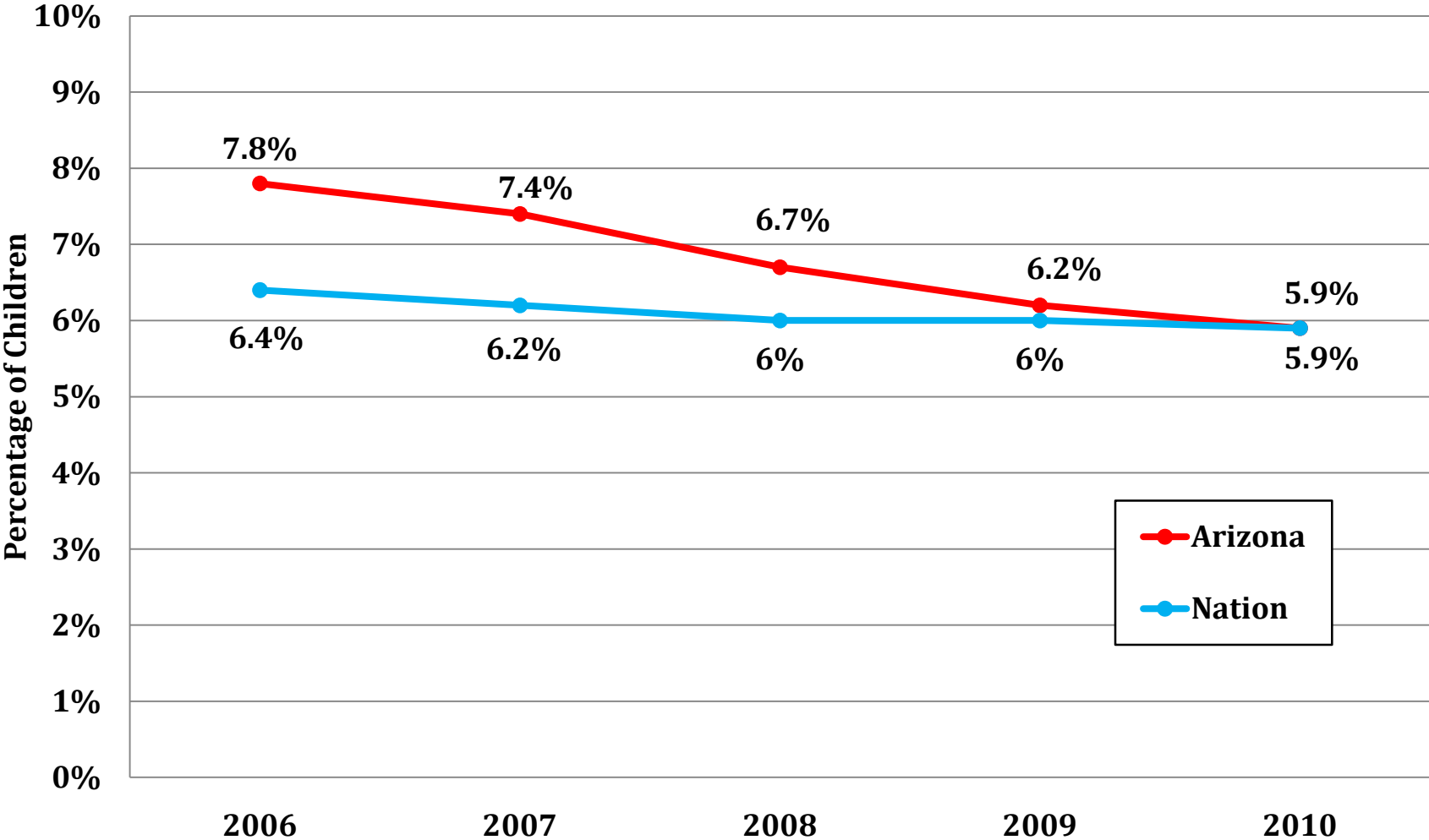
LOW BIRTHWEIGHT (<2500 g)



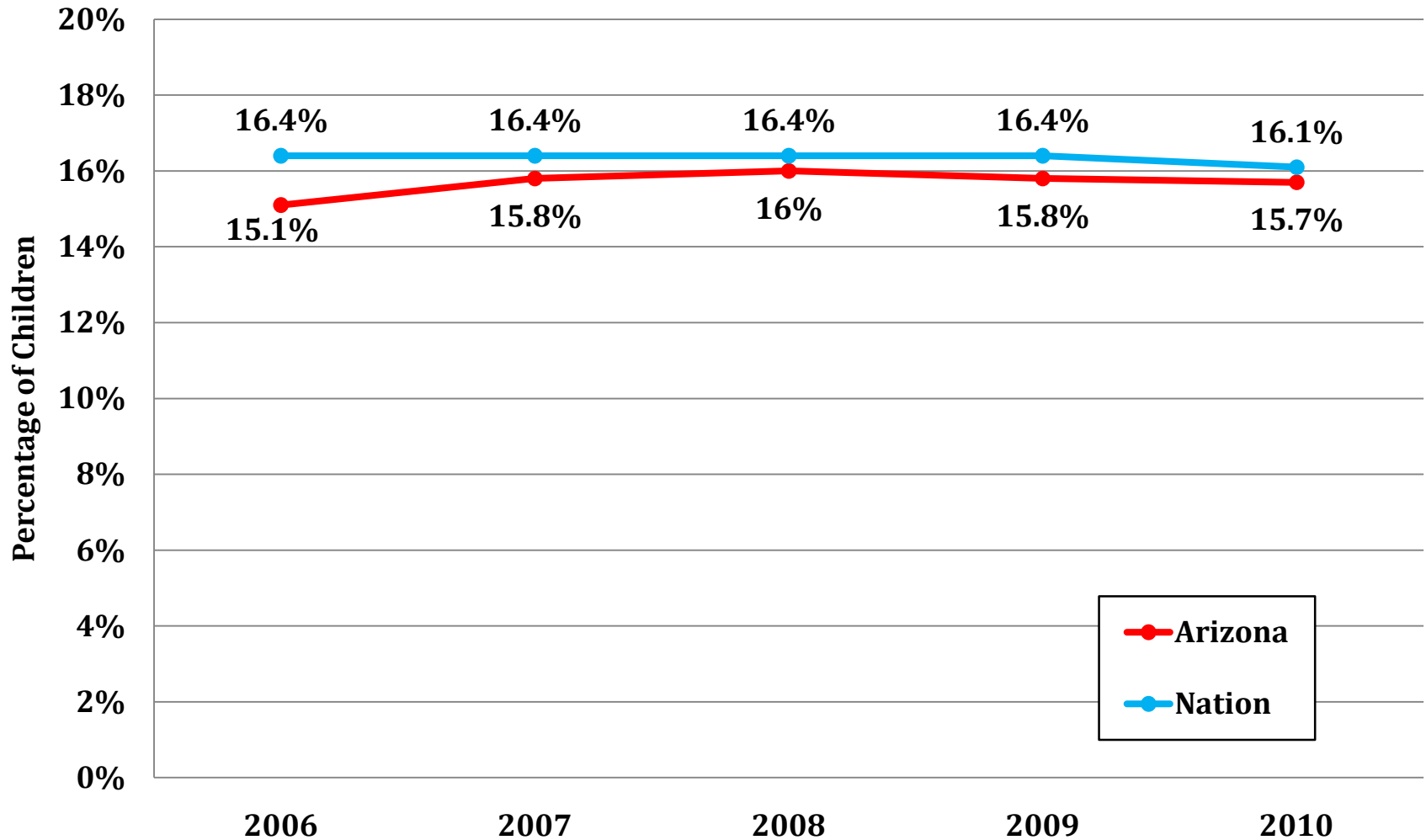
HIGH BIRTHWEIGHT (>4000 g)



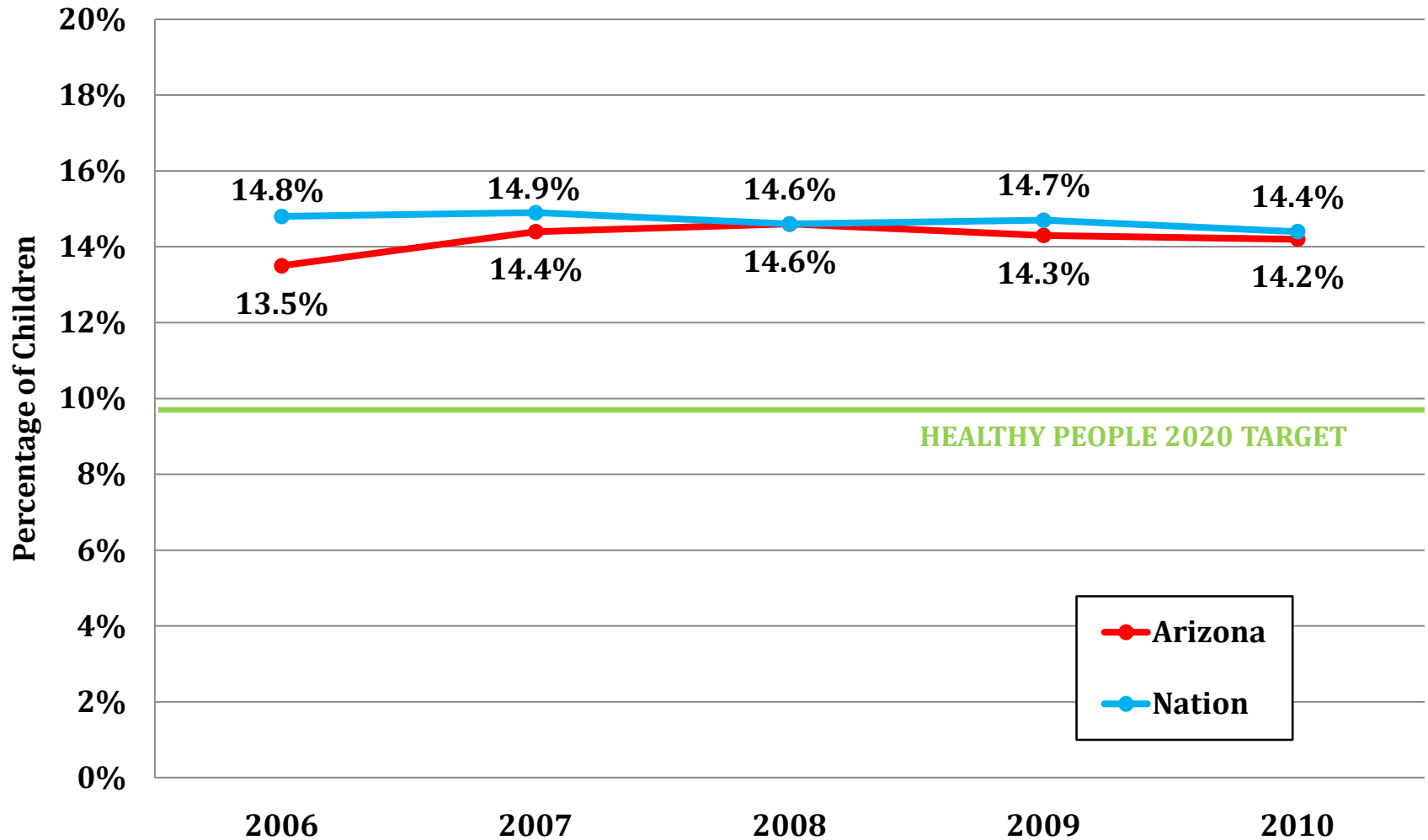
SHORT STATURE ($<5^{\text{th}}$ percentile)



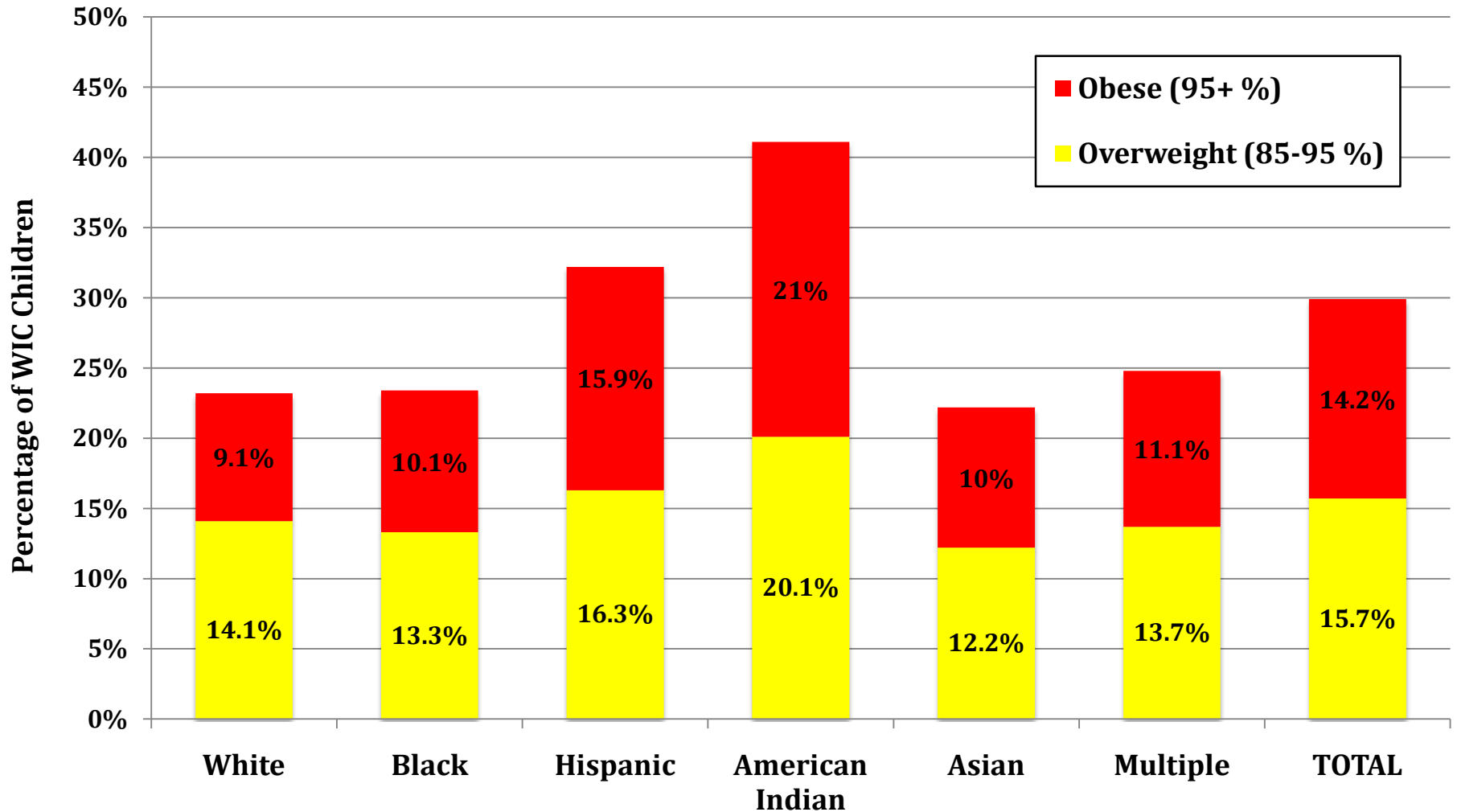
OVERWEIGHT IN CHILDREN 2-5 YEARS (85th - <95th percentile)



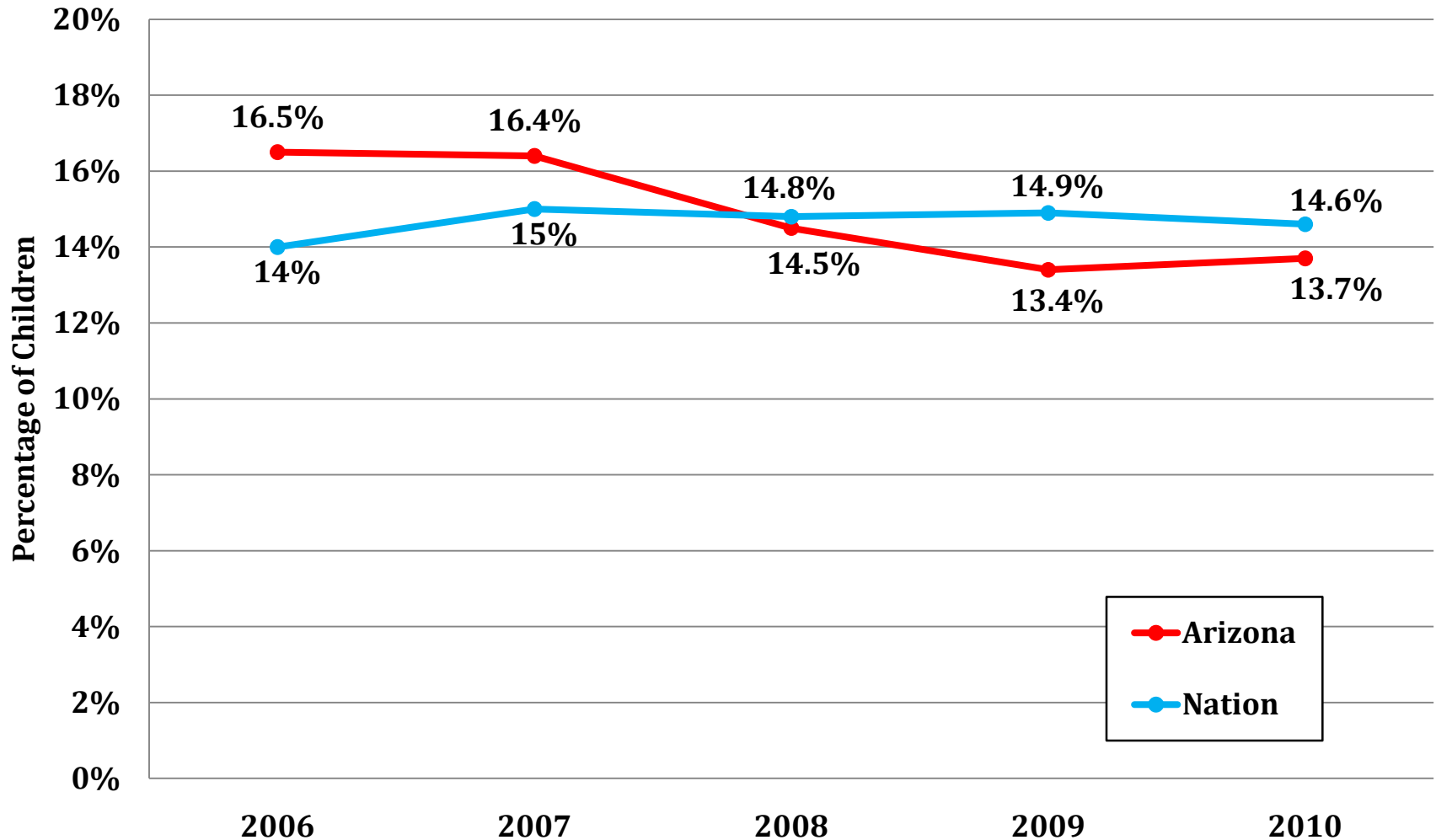
OBESITY IN CHILDREN 2-5 YEARS ($\geq 95^{\text{th}}$ percentile)



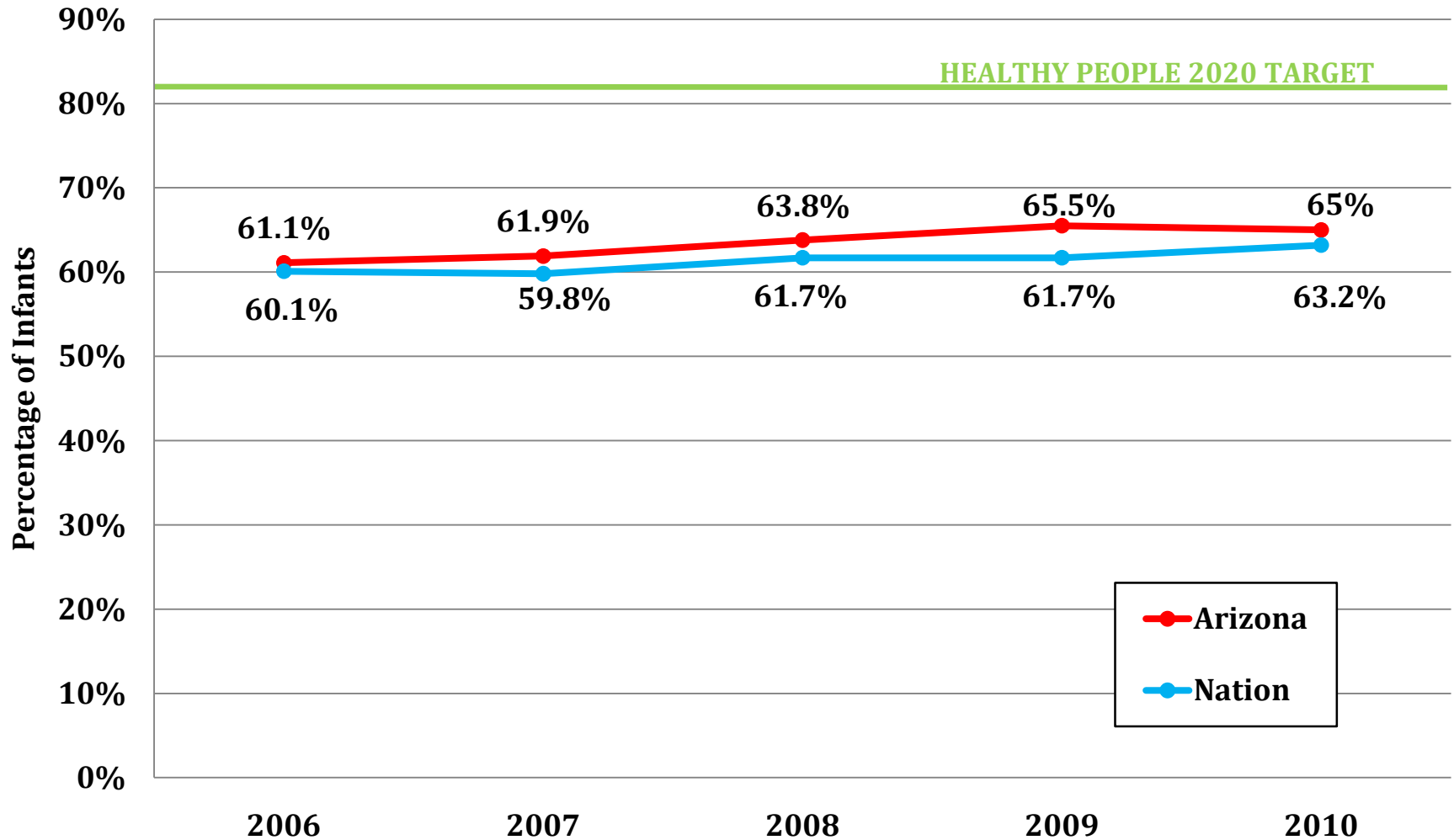
OVERWEIGHT AND OBESITY IN CHILDREN 2-5 YEARS BY RACE/ETHNICITY, 2010



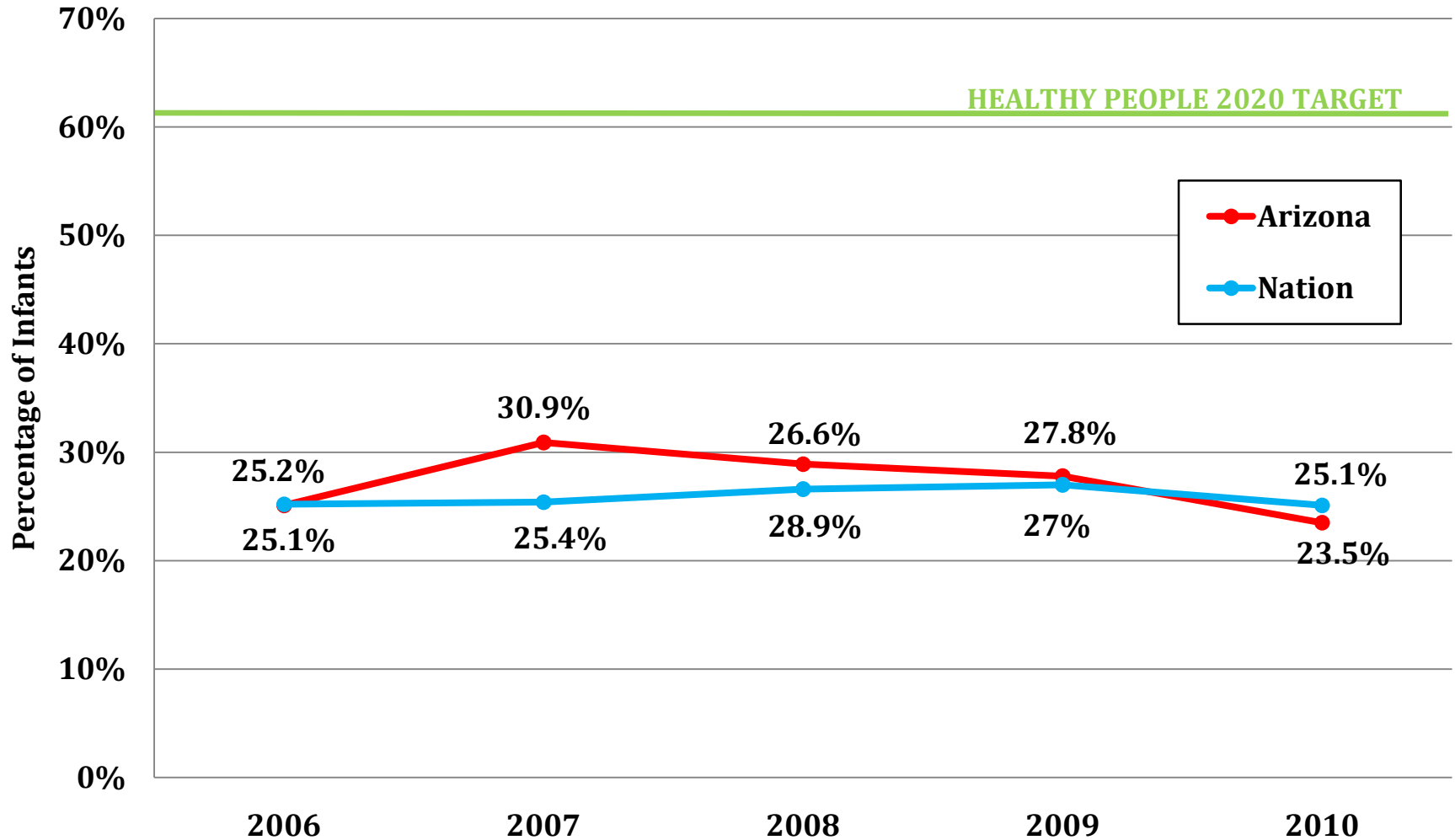
ANEMIA IN CHILDREN 0-5 YEARS (Low Hemoglobin)



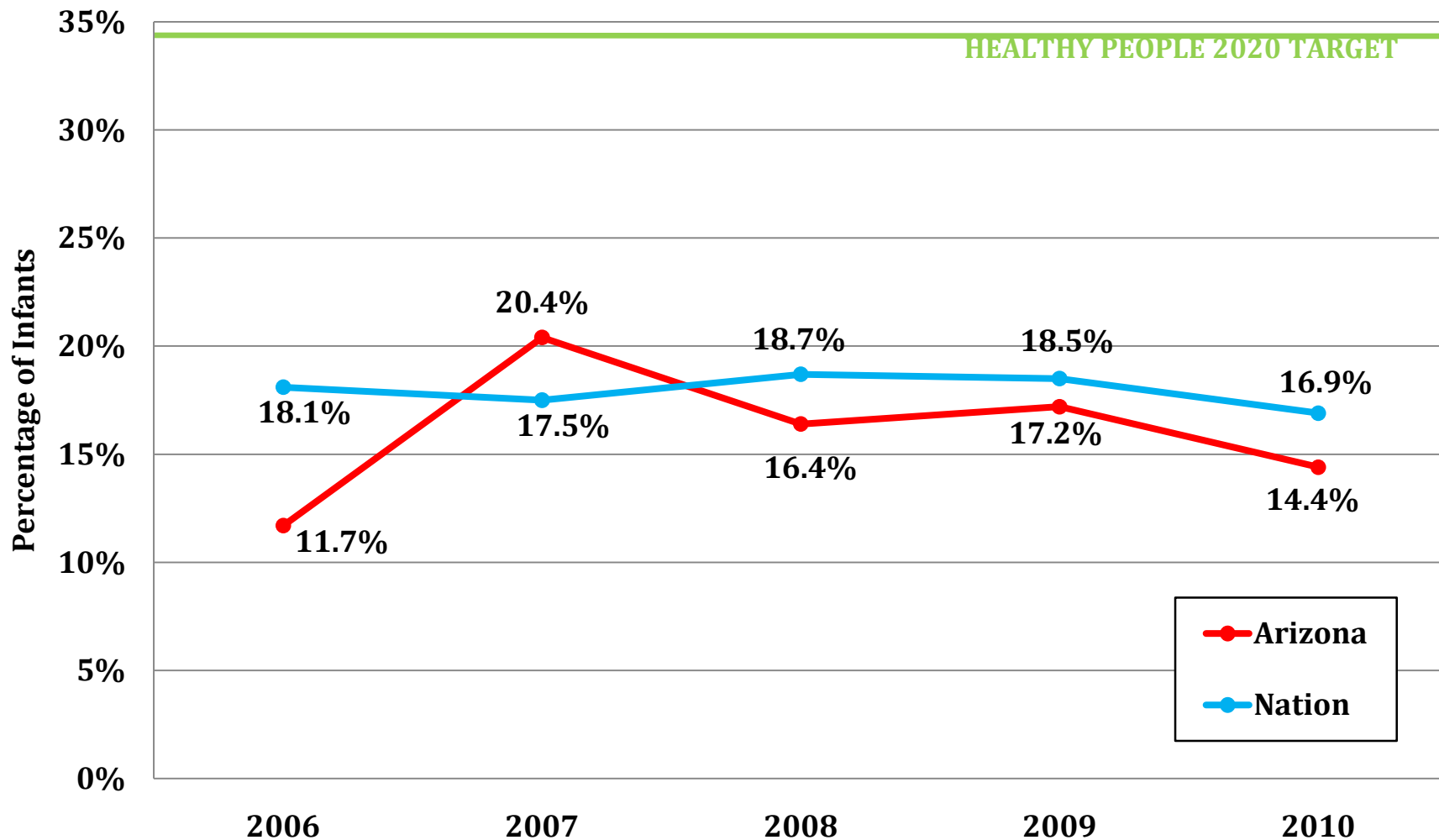
BREASTFEEDING INITIATION



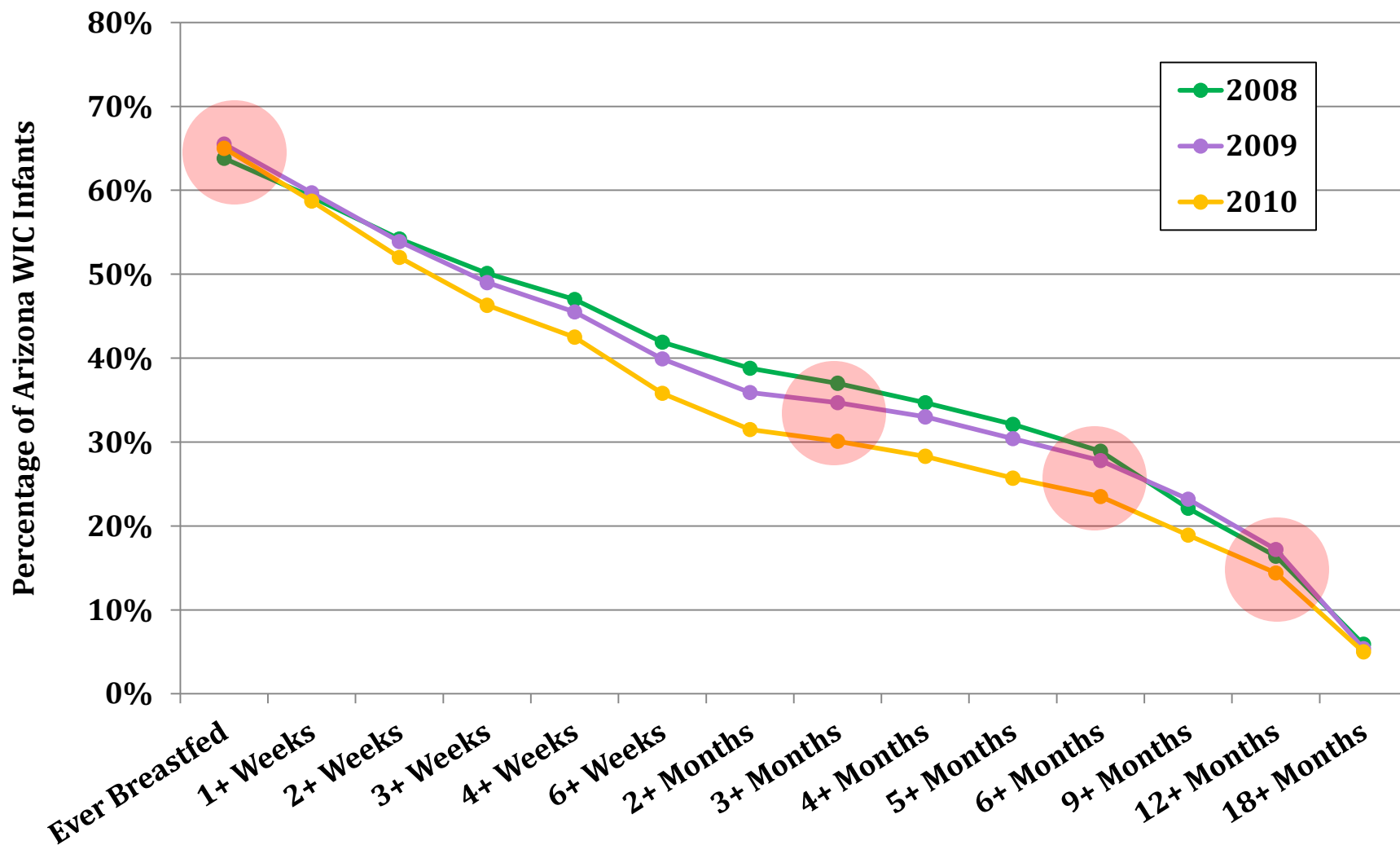
INFANTS BREASTFED AT LEAST 6 MONTHS



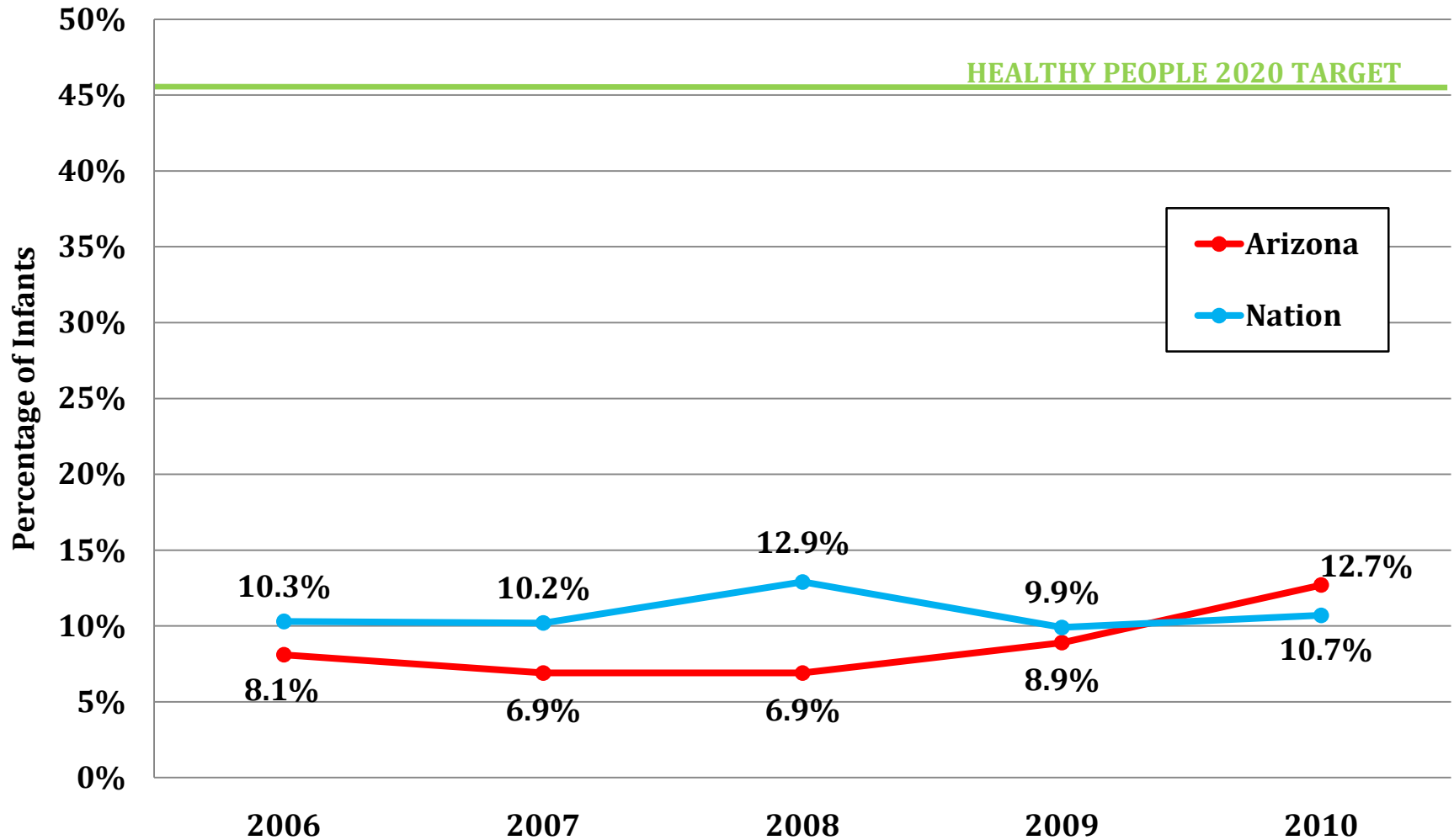
INFANTS BREASTFED AT LEAST 12 MONTHS



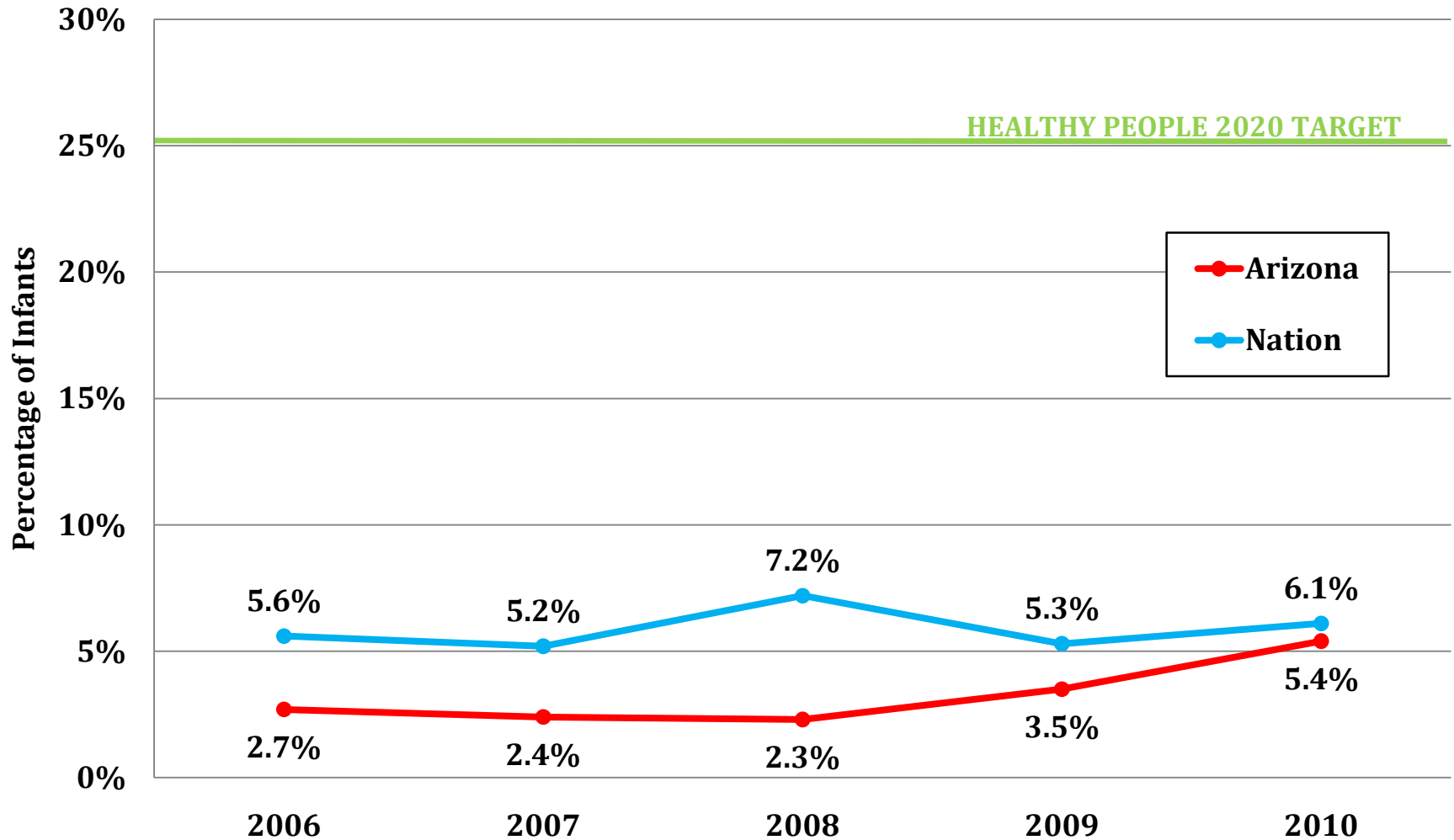
TIME TRENDS IN BREASTFEEDING DURATION OF ARIZONA WIC INFANTS



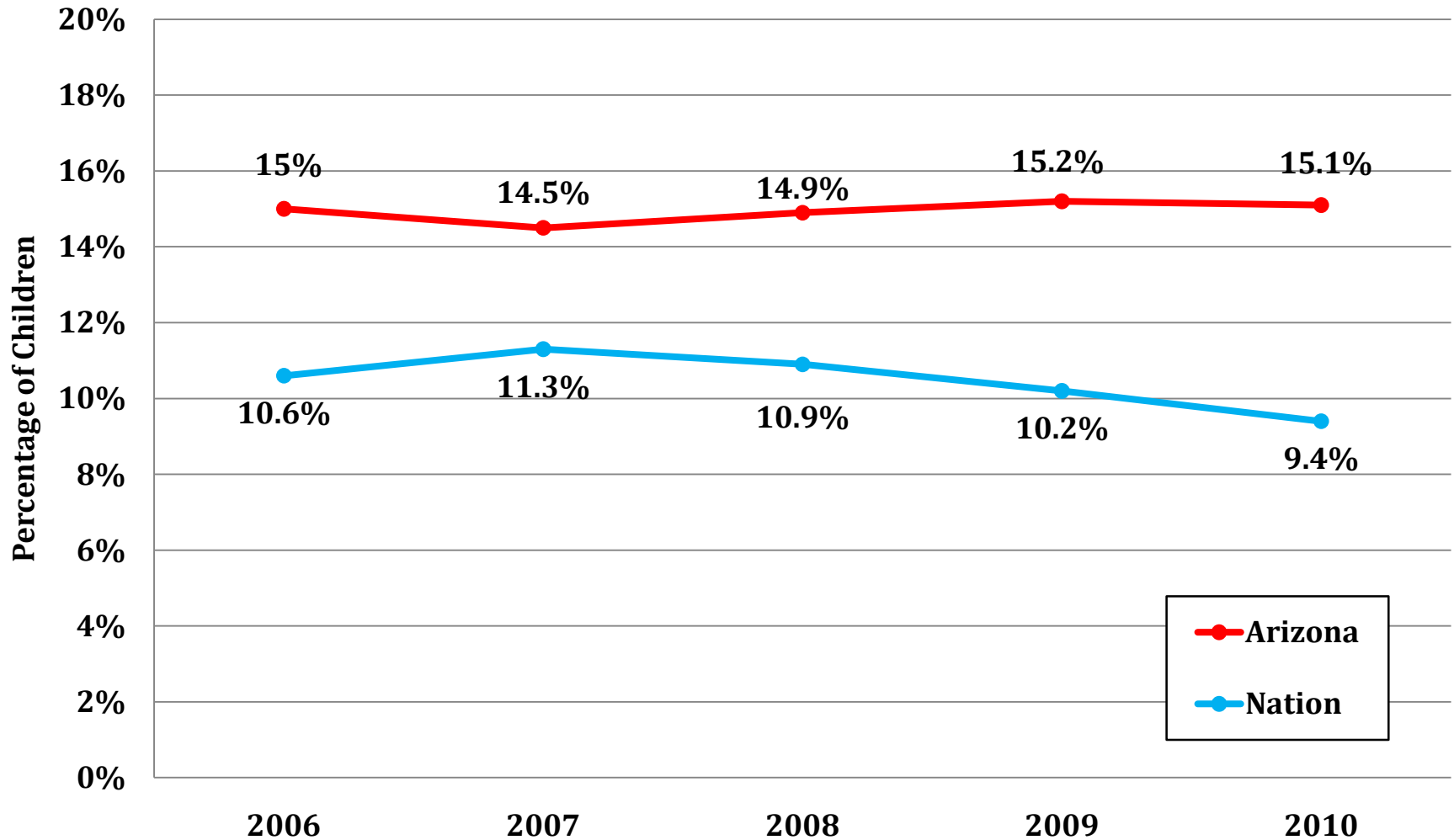
INFANTS EXCLUSIVELY BREASTFED AT LEAST 3 MONTHS



INFANTS EXCLUSIVELY BREASTFED AT LEAST 6 MONTHS



CHILDREN EXPOSED TO SMOKING IN THE HOUSEHOLD



What is in PNSS?

DEMOGRAPHIC INFO

- Clinic and local agency
- Age
- Race/ethnicity
- Household size and monthly income (calculate % FPL)
- Adjunctive eligibility
- Education level

HEALTH & NUTRITION DATA

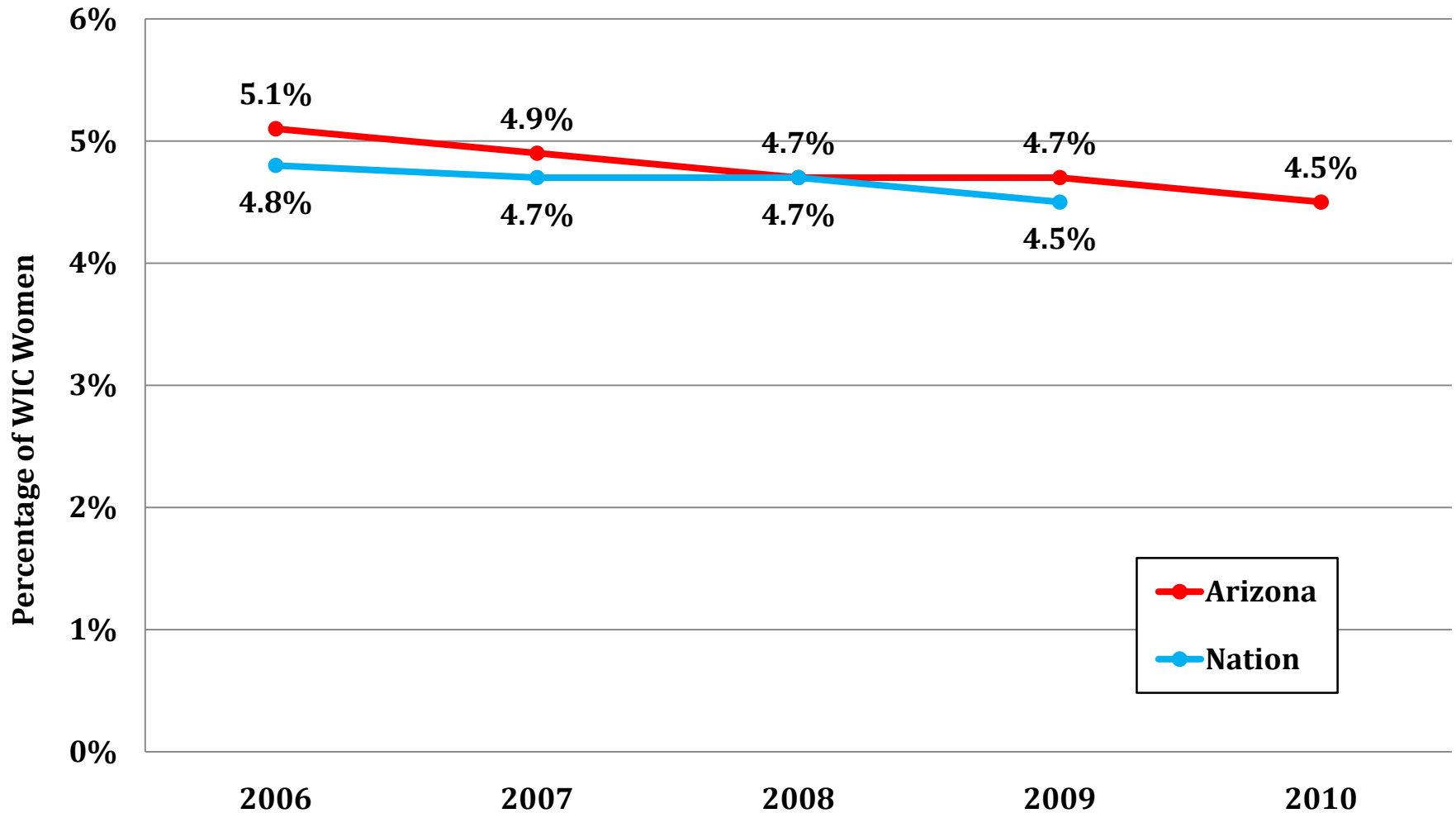
- Pre-pregnancy BMI
- Maternal weight gain
- Anemia
- Gestational diabetes and hypertension
- Medical care
- WIC enrollment
- Smoking and drinking
- Birth information

Bureau of Nutrition and Physical Activity

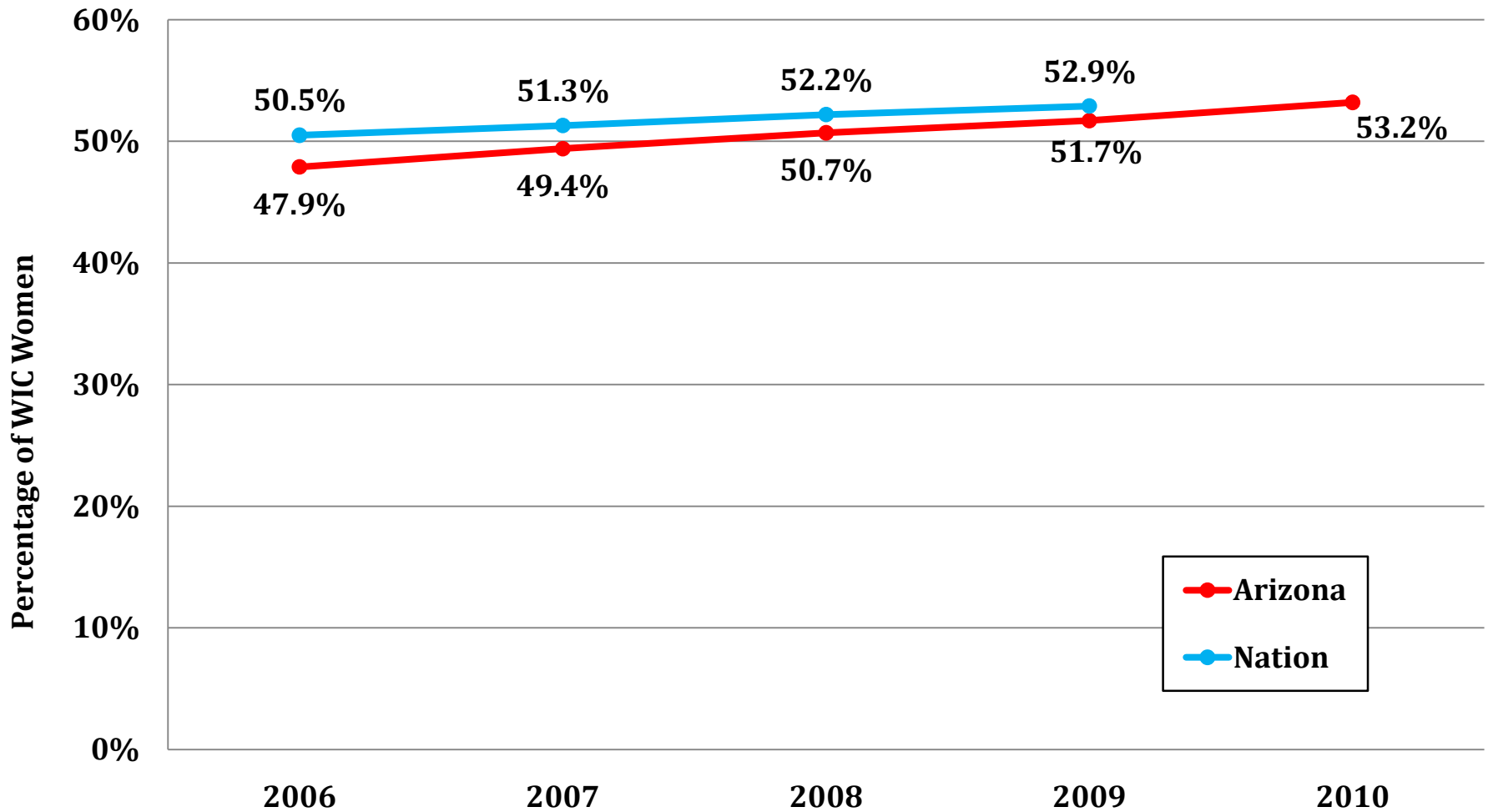
Leadership for a Healthy Arizona



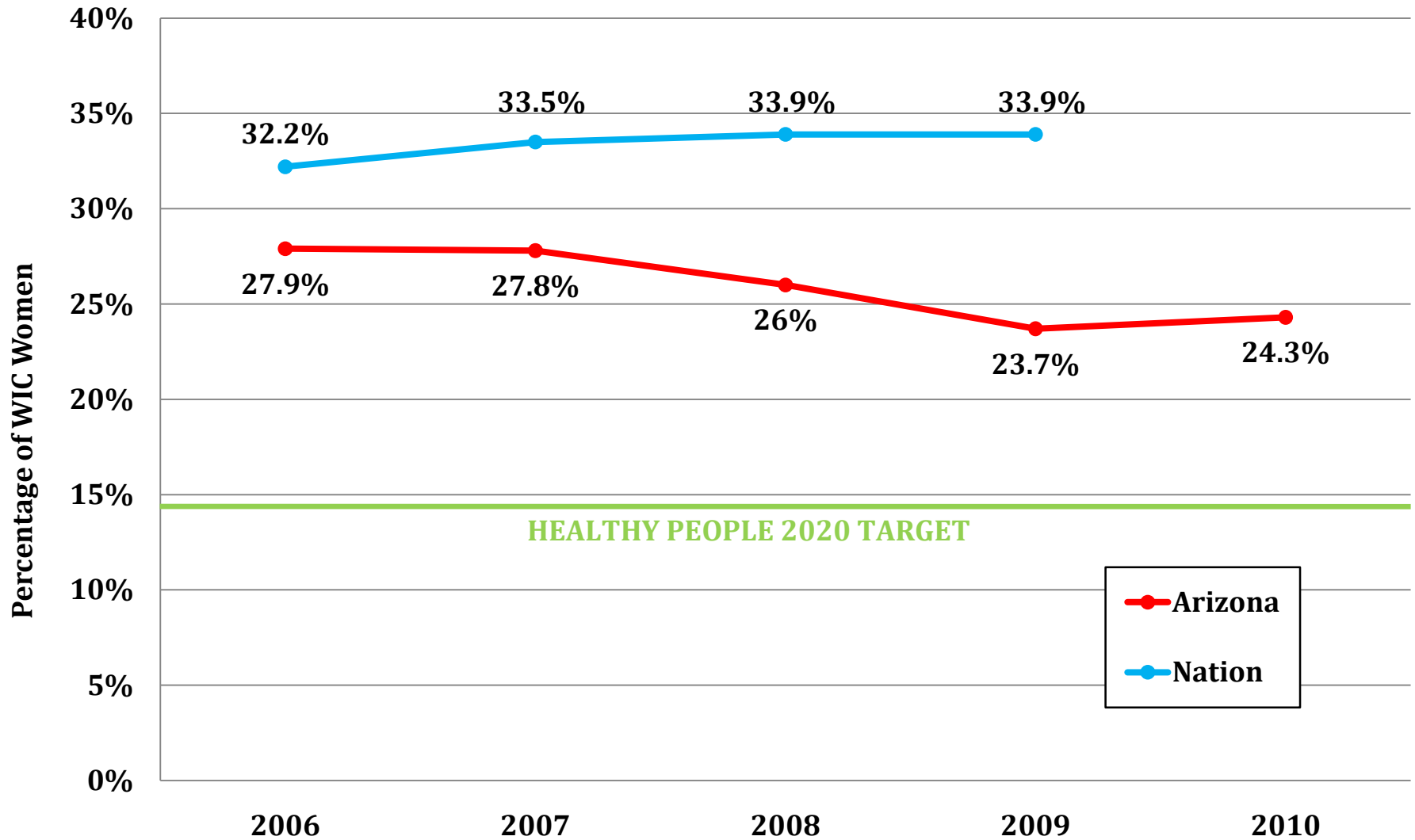
WOMEN WITH UNDERWEIGHT PRE-PREGNANCY BMI



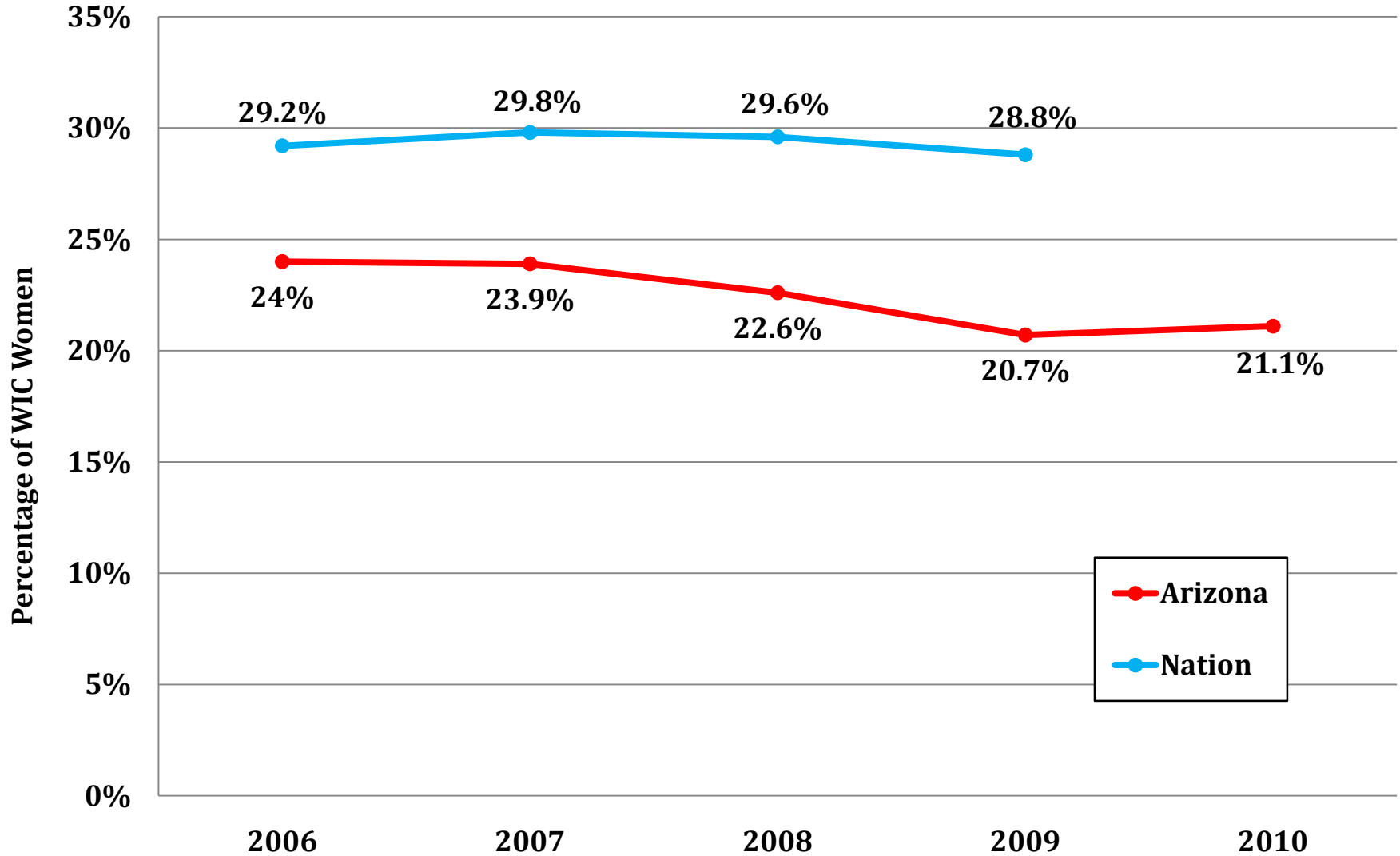
WOMEN WITH OVERWEIGHT OR OBESE PRE-PREGNANCY BMI



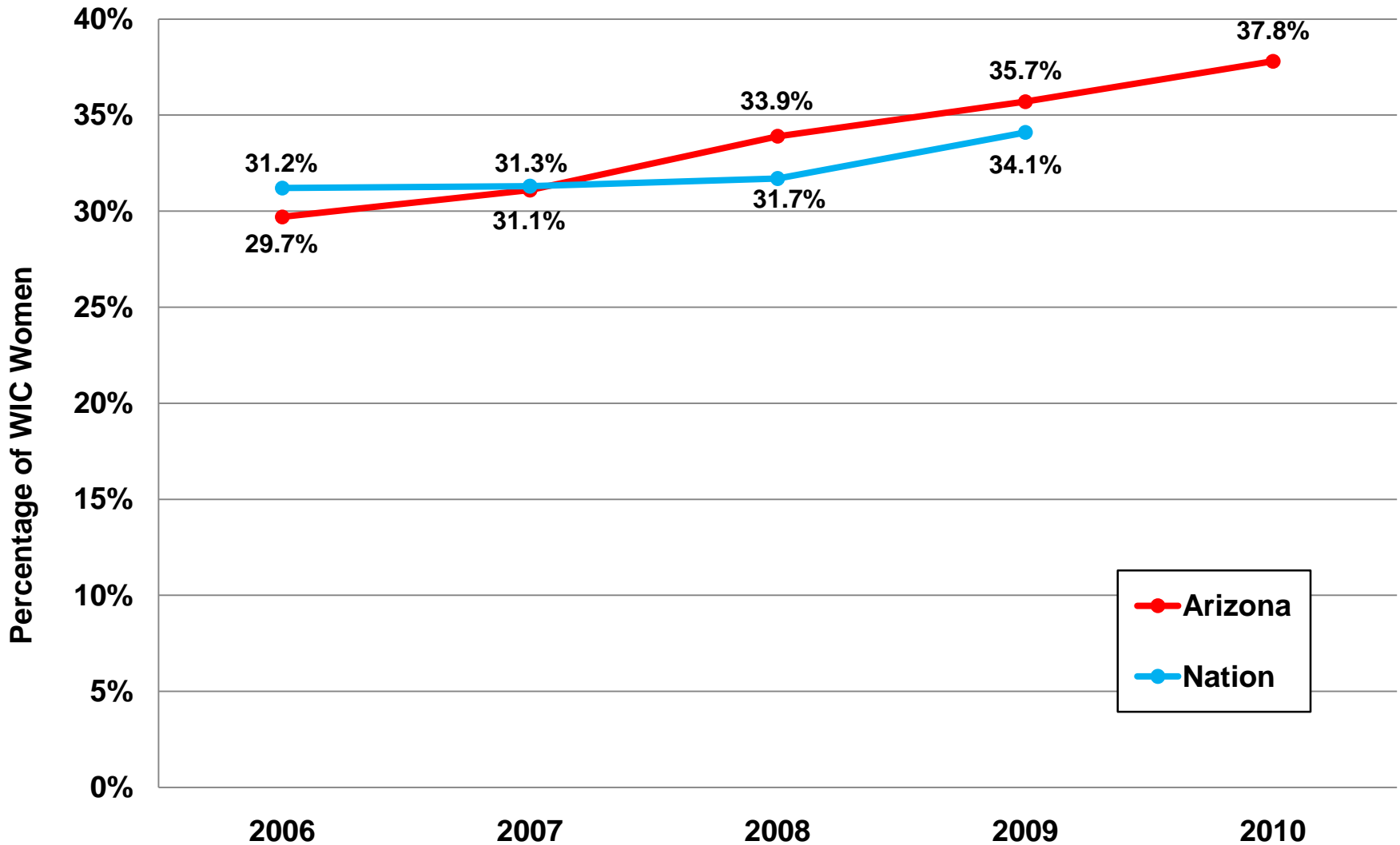
WOMEN WITH ANEMIA IN THE 3RD TRIMESTER



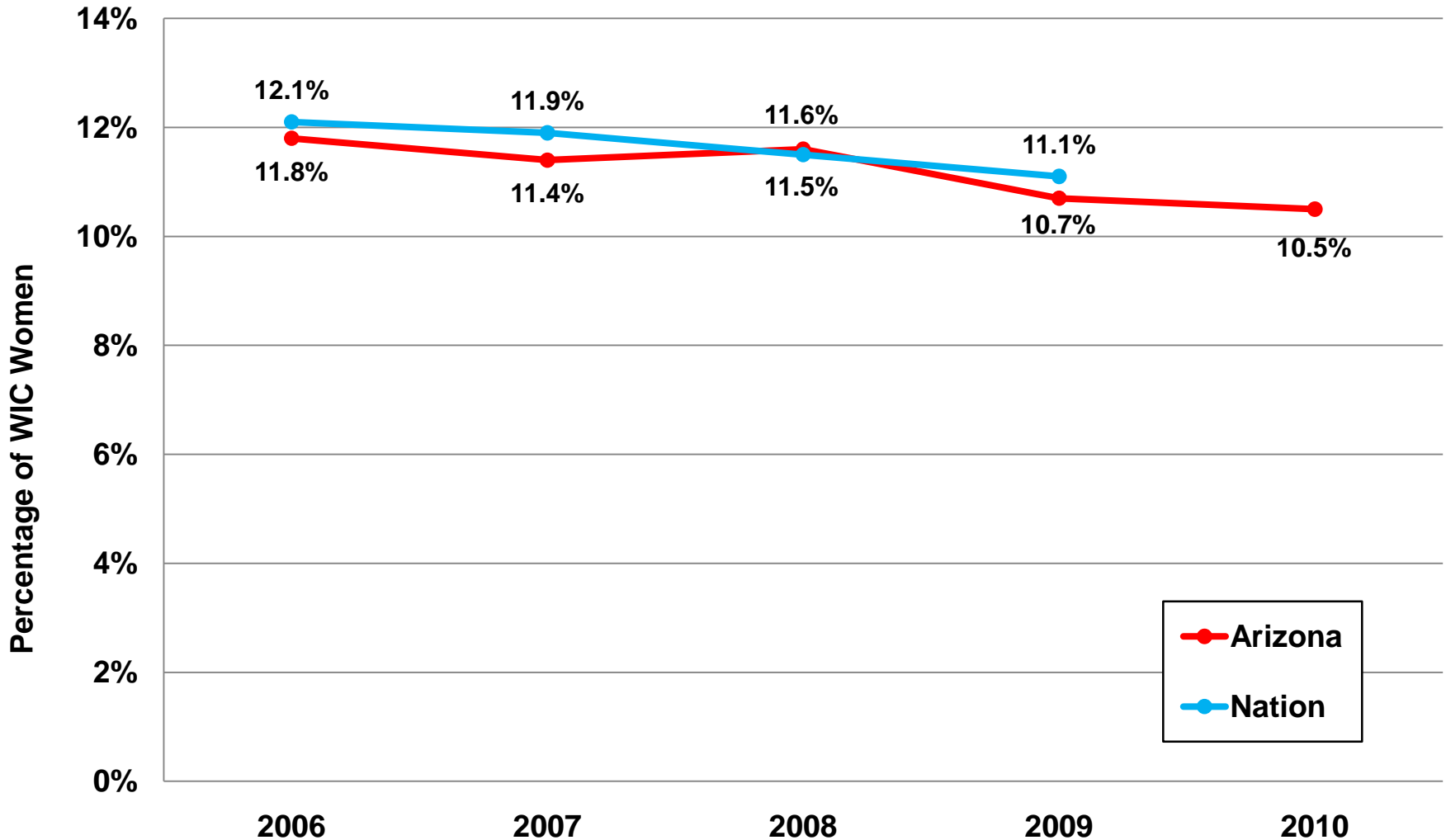
WOMEN WITH POSTPARTUM ANEMIA



WIC ENROLLMENT IN THE 1ST TRIMESTER



WOMEN GIVING BIRTH TO PRETERM INFANTS



Questions?

Joan Agostinelli

Research & Development Manager

Joan.Agostinelli@azdhs.gov

602.542.2584

Bureau of Nutrition and Physical Activity

Leadership for a Healthy Arizona

