



Office of the Director

150 N. 18th Avenue, Suite 500
Phoenix, Arizona 85007-3247
(602) 542-1025
(602) 542-1062 FAX
Internet: www.azdhs.gov

JANICE K. BREWER, GOVERNOR
WILL HUMBLE, DIRECTOR

March 10, 2011

The Honorable Russell Pearce
President
Arizona State Senate
1700 West Washington
Phoenix, Arizona 85007

The Honorable Kirk Adams
Speaker of the House
Arizona State House of Representatives
1700 West Washington
Phoenix, Arizona 85007

Dear President Pearce and Speaker Adams:

The Arizona Department of Health Services' 30th of the Month Report for the month ending January 31st is attached in the Portable Document File (PDF) for your review. This report compares FY 2011 expenditures with those from FY 2010.

The Department of Health Services is currently projecting a General Fund shortfall of \$46,418,343 for TXIX Children Rehabilitative Services and Behavioral Health Services programs. This projected shortfall is due to higher than expected member month growth. Comparing to January 2010, the member months of January 2011 have increased by 3.84%.

If you have any questions or comments, please feel free to contact Jim Humble at (602) 364-0679.

Sincerely,

A handwritten signature in black ink that reads "Will Humble". The signature is written in a cursive, flowing style.

Will Humble
Director

WH/ds

Enc.

- C: Eileen Klein, Chief of Staff, Governor's Office
Brian McNeil, Deputy Chief of Staff, Operations, Governor's Office
Beth Kohler Lazare, Deputy Policy Director, Governor's Office
John Arnold, Director, Office of Strategic Planning and Budgeting
Richard Stavneak, Director, Joint Legislative Budget Committee
Senator Nancy Barto, Chairperson, Senate Healthcare and Medical Liability Reform Committee
Senator Andy Biggs, Chairperson, Senate Appropriations Committee
Representative Cecil Ash, Chairperson, House Health and Human Services Committee

ARIZONA DEPARTMENT OF HEALTH SERVICES

30th OF THE MONTH REPORT

FISCAL YEAR 2011

FOR THE MONTH ENDING
January 31, 2011

DEPARTMENT OF HEALTH SERVICES - FINANCIAL SUMMARY

FISCAL YEAR 2011

MONTH END

January-11

PERCENTAGE OF TIME
ELAPSED

58%

GENERAL FUND AND OTHER APPROPRIATED FUNDS	TOTAL			YEAR TO DATE			ANNUALIZED	
	FY 2010* ACTUAL	FY 2011 APPROP	FY 2011 ALLOC	FY 2011 ACTUAL	FY 2011 ENCUMB	%EXP/ ENC	FY 2011 PROJECTED	OVER(+)/ UNDER(-)
PROGRAM SUMMARY								
ADMINISTRATION	\$32,603,281	\$33,530,922	\$33,530,922	\$21,450,307	\$310,624	65%	\$33,530,922	\$0
PUBLIC HEALTH	\$17,788,791	\$17,111,786	\$17,111,786	\$8,064,098	\$1,382,686	55%	\$17,111,786	\$0
FAMILY HEALTH	\$105,193,945	\$106,522,972	\$106,522,972	\$67,901,436	\$2,910,004	66%	\$132,653,369	(\$26,130,397)
BEHAVIORAL HEALTH	\$1,348,897,890	\$1,358,264,493	\$1,358,264,493	\$777,411,104	\$3,957,333	58%	\$1,371,171,868	(\$12,907,375)
ARIZONA STATE HOSPITAL	\$64,546,199	\$67,526,027	\$67,526,027	\$39,746,153	\$1,976,409	62%	\$67,526,027	\$0
TOTAL - APPROPRIATIONS	\$1,569,030,106	\$1,582,956,200	\$1,582,956,200	\$914,573,098	\$10,537,057	58%	\$1,621,993,972	(\$39,037,772)
EXPENDITURE DETAIL								
FTE POSITIONS	1,632.1	1,632.1	1,632.1					
PERSONAL SERVICES	\$44,821,178	\$43,822,054	\$43,822,054	\$24,565,320	\$0	56%	\$43,822,054	\$0
EMPLOYEE RELATED EXPENDITURES	\$17,766,774	\$17,603,352	\$17,603,352	\$12,865,175	\$0	73%	\$17,603,352	\$0
SUBTOTAL - P/S ERE	\$62,587,952	\$61,425,406	\$61,425,406	\$37,430,495	\$0	61%	\$61,425,406	\$0
PROFESSIONAL AND OUTSIDE SERVICES	\$8,149,582	\$10,187,473	\$10,187,473	\$4,096,829	\$1,759,413	57%	\$10,187,473	\$0
TRAVEL - IN STATE	\$144,442	\$181,585	\$181,585	\$37,968	\$2,292	22%	\$181,585	\$0
TRAVEL - OUT OF STATE	\$1,193	\$8,762	\$8,762	\$2,217	\$0	25%	\$8,762	\$0
OTHER OPERATING EXPENDITURES	\$19,635,115	\$27,334,350	\$27,334,350	\$13,346,640	\$648,771	51%	\$27,334,350	\$0
EQUIPMENT	\$949,578	\$641,154	\$641,154	\$142,793	\$26,881	26%	\$641,154	\$0
SUBTOTAL - OTHER OPERATING EXPENSES	\$28,879,910	\$38,353,322	\$38,353,322	\$17,626,447	\$2,437,357	52%	\$38,353,322	\$0
TOTAL - ALL OPERATING	\$91,467,862	\$99,778,728	\$99,778,728	\$55,056,942	\$2,437,357	58%	\$99,778,728	\$0
SPECIAL LINE ITEM:								
SPECIAL LINE ITEMS	\$1,477,562,244	\$1,483,177,472	\$1,483,177,472	\$859,516,156	\$8,099,700	58%	\$1,522,215,244	(\$39,037,772)
TOTAL - PROGRAM	\$1,569,030,106	\$1,582,956,200	\$1,582,956,200	\$914,573,098	\$10,537,057	58%	\$1,621,993,972	(\$39,037,772)
FUND SUMMARY*								
GENERAL FUND	\$481,285,727	\$438,939,000	\$438,939,000	\$339,231,653	\$3,172,551	78%	\$485,357,343	(\$46,418,343)
NURSING CARE INSTITUTION RESIDENT PROTECTION FUND	\$28,694	\$38,000	\$38,000	\$0	\$0	0%	\$38,000	\$0
NEWBORN SCREENING PROGRAM FUND	\$5,379,323	\$6,749,900	\$6,749,900	\$2,836,516	\$1,389,698	63%	\$6,749,900	\$0
INDIRECT COST FUND	\$7,257,319	\$7,746,700	\$7,746,700	\$4,568,732	\$23,911	59%	\$7,746,700	\$0
FEDERAL CHILD CARE AND DEV. FUND BLOCK GRANT	\$781,773	\$836,100	\$836,100	\$420,650	\$0	50%	\$836,100	\$0
CAPITAL OUTLAY STABILIZATION FUND	\$1,550,127	\$1,587,500	\$1,587,500	\$1,562,974	\$9,824	99%	\$1,587,500	\$0
TOBACCO TAX - MEDICALLY NEEDY ACCOUNT	\$35,424,799	\$35,167,000	\$35,167,000	\$15,927,894	\$2,851,811	53%	\$35,167,000	\$0
TOBACCO TAX - HEALTH RESEARCH FUND/ACCOUNT	\$0	\$1,000,000	\$1,000,000	\$0	\$0	0%	\$1,000,000	\$0
EMERGENCY MEDICAL SERVICES OPERATING FUND	\$4,216,007	\$5,093,200	\$5,093,200	\$2,172,518	\$399,428	50%	\$5,093,200	\$0
ENVIRONMENTAL LAB LICENSURE REVOLVING FUND	\$693,177	\$924,000	\$924,000	\$468,987	\$6,547	51%	\$924,000	\$0
VITAL RECORDS ELECTRONIC SYSTEMS FUND	\$433,700	\$426,400	\$426,400	\$197,815	\$69,015	63%	\$426,400	\$0
CHILD FATALITY REVIEW FUND	\$99,100	\$95,400	\$95,400	\$38,561	\$0	40%	\$95,400	\$0
SUBSTANCE ABUSE SERVICES TREATMENT FUND	\$1,083,332	\$2,250,000	\$2,250,000	\$1,312,500	\$0	58%	\$2,250,000	\$0
FEDERAL TITLE XIX FUNDS	\$1,016,909,074	\$1,061,014,500	\$1,061,014,500	\$536,117,859	\$892,695	51%	\$1,053,633,929	\$7,380,571
ARIZONA STATE HOSPITAL FUND	\$8,381,384	\$11,159,500	\$11,159,500	\$4,430,724	\$1,616,235	54%	\$11,159,500	\$0
STATE HOSPITAL LAND EARNINGS FUND	\$420,065	\$1,150,000	\$1,150,000	\$82,068	\$30,244	10%	\$1,150,000	\$0
HEARING AND SPEECH PROFESSIONALS FUND	\$315,027	\$315,700	\$315,700	\$194,248	\$6,001	63%	\$315,700	\$0
HEALTH SERVICE LICENSING FUND	\$4,204,401	\$8,463,300	\$8,463,300	\$5,009,398	\$69,095	60%	\$8,463,300	\$0
SERVICE FEES INCREASES	\$567,077	\$0	\$0	\$0	\$0	0%	\$0	\$0
TOTAL - ALL SOURCES	\$1,569,030,106	\$1,582,956,200	\$1,582,956,200	\$914,573,098	\$10,537,057	58%	\$1,621,993,972	(\$39,037,772)

* FY2010 ACTUALS DO NOT INCLUDE ENCUMBRANCES

** THERE IS A REPORTING METHODOLOGY CHANGE STARTING FROM JANUARY 2011

ADMINISTRATIVE SERVICES

FISCAL YEAR 2011

MONTH END	January-11			PERCENTAGE OF TIME ELAPSED				
	TOTAL			YEAR TO DATE			ANNUALIZED	
EXPENDITURE DETAIL	FY 2010 ACTUAL	FY 2011 APPROP	FY 2011 ALLOC	FY 2011 ACTUAL	FY 2011 ENCUMB	%EXP/ ENC	FY 2011 PROJECTED	OVER(+)/ UNDER(-)
FTE POSITIONS	389.2	389.2	389.2					
PERSONAL SERVICES	\$7,187,447	\$7,147,620	\$7,147,620	\$4,008,781	\$0	56%	\$7,147,620	\$0
EMPLOYEE RELATED EXPENDITURES	\$2,931,706	\$2,908,230	\$2,908,230	\$2,069,701	\$0	71%	\$2,908,230	\$0
SUBTOTAL - P/S ERE	\$10,119,153	\$10,055,850	\$10,055,850	\$6,078,482	\$0	60%	\$10,055,850	\$0
PROFESSIONAL AND OUTSIDE SERVICES	\$143,488	\$266,760	\$266,760	\$178,951	\$87,451	100%	\$266,760	\$0
TRAVEL- IN STATE	\$19,196	\$18,000	\$18,000	\$4,966	\$0	28%	\$18,000	\$0
TRAVEL- OUT OF STATE	\$761	\$700	\$700	\$237	\$0	34%	\$700	\$0
OTHER OPERATING EXPENDITURES	\$11,340,072	\$11,987,152	\$11,987,152	\$8,840,364	\$145,192	75%	\$11,987,152	\$0
EQUIPMENT	\$181,361	\$191,700	\$191,700	\$117,847	\$1,276	62%	\$191,700	\$0
SUBTOTAL - OTHER OPERATING EXPENSES	\$11,684,878	\$12,464,312	\$12,464,312	\$9,142,365	\$233,919	75%	\$12,464,312	\$0
TOTAL - ALL OPERATING	\$21,804,031	\$22,520,162	\$22,520,162	\$15,220,847	\$233,919	69%	\$22,520,162	\$0
SPECIAL LINE ITEM:								
ASSURANCE AND LICENSURE	\$10,410,917	\$10,589,560	\$10,589,560	\$6,018,860	\$76,705	58%	\$10,589,560	\$0
ATTORNEY GENERAL LEGAL SERVICES	\$388,333	\$421,200	\$421,200	\$210,600	\$0	50%	\$421,200	\$0
SUBTOTAL - SPECIAL LINE ITEMS	\$10,799,250	\$11,010,760	\$11,010,760	\$6,229,460	\$76,705	57%	\$11,010,760	\$0
TOTAL - PROGRAM	\$32,603,281	\$33,530,922	\$33,530,922	\$21,450,307	\$310,624	65%	\$33,530,922	\$0
FUND SUMMARY								
GENERAL FUND	\$16,673,433	\$12,869,162	\$12,869,162	\$9,274,741	\$200,184	74%	\$12,869,162	\$0
NURSING CARE INSTITUTION RESIDENT PROTECTION FUND	\$28,694	\$38,000	\$38,000	\$0	\$0	0%	\$38,000	\$0
NEWBORN SCREENING PROGRAM FUND	\$478,600	\$478,600	\$478,600	\$0	\$0	0%	\$478,600	\$0
INDIRECT COST FUND	\$7,257,319	\$7,746,700	\$7,746,700	\$4,568,732	\$23,911	59%	\$7,746,700	\$0
FEDERAL CHILD CARE AND DEV. FUND BLOCK GRANT	\$781,773	\$836,100	\$836,100	\$420,650	\$0	50%	\$836,100	\$0
CAPITAL OUTLAY STABILIZATION FUND	\$1,550,127	\$1,587,500	\$1,587,500	\$1,562,974	\$9,824	99%	\$1,587,500	\$0
EMERGENCY MEDICAL SERVICES OPERATING FUND	\$79,827	\$259,400	\$259,400	\$25,000	\$0	10%	\$259,400	\$0
FEDERAL TITLE XIX FUNDS	\$667,003	\$936,460	\$936,460	\$394,564	\$1,609	42%	\$936,460	\$0
HEARING AND SPEECH PROFESSIONALS FUND	\$315,027	\$315,700	\$315,700	\$194,248	\$6,001	63%	\$315,700	\$0
SERVICE FEES INCREASES	\$567,077	\$0	\$0	\$0	\$0	0%	\$0	\$0
HEALTH SERVICE LICENSING FUND	\$4,204,401	\$8,463,300	\$8,463,300	\$5,009,398	\$69,095	60%	\$8,463,300	\$0
TOTAL - ALL SOURCES	\$32,603,281	\$33,530,922	\$33,530,922	\$21,450,307	\$310,624	65%	\$33,530,922	\$0

ASSURANCE AND LICENSURE SERVICES

FISCAL YEAR 2011

MONTH END **January-11**

PERCENTAGE OF TIME
ELAPSED 58%

TOTAL

YEAR TO DATE

ANNUALIZED

EXPENDITURE DETAIL	FY 2010	FY 2011	FY 2011	FY 2011	FY 2011	%EXP/ ENC	FY 2011	OVER(+/ UNDER(-)
	ACTUAL	APPROP	ALLOC	ACTUAL	ENCUMB		PROJECTED	
FTE POSITIONS	175.6	175.6	175.6					
PERSONAL SERVICES	\$5,560,981	\$5,855,875	\$5,855,875	\$3,002,743	\$0	51%	\$5,855,875	\$0
EMPLOYEE RELATED EXPENDITURES	\$2,422,588	\$2,482,063	\$2,482,063	\$1,304,381	\$0	53%	\$2,482,063	\$0
SUBTOTAL - P/S ERE	\$7,983,569	\$8,337,938	\$8,337,938	\$4,307,124	\$0	52%	\$8,337,938	\$0
PROFESSIONAL AND OUTSIDE SERVICES								
TRAVEL- IN STATE	\$41,511	\$31,074	\$31,074	\$10,003	\$3,195	42%	\$31,074	\$0
TRAVEL- OUT OF STATE	\$196,267	\$246,651	\$246,651	\$83,044	\$0	34%	\$246,651	\$0
OTHER OPERATING EXPENDITURES	\$2,463	\$5,400	\$5,400	\$3,307	\$0	61%	\$5,400	\$0
EQUIPMENT	\$2,140,123	\$1,842,747	\$1,842,747	\$1,589,019	\$57,757	89%	\$1,842,747	\$0
	\$46,984	\$125,750	\$125,750	\$26,363	\$15,753	33%	\$125,750	\$0
SUBTOTAL - OTHER OPERATING EXPENSES	\$2,427,348	\$2,251,622	\$2,251,622	\$1,711,736	\$76,705	79%	\$2,251,622	\$0
TOTAL - ALL OPERATING	\$10,410,917	\$10,589,560	\$10,589,560	\$6,018,860	\$76,705	58%	\$10,589,560	\$0
	\$0	\$0	\$0	\$0	\$0	0%	\$0	\$0
SUBTOTAL - ADDITIONAL APPROPRIATIONS	\$0	\$0	\$0	\$0	\$0	0%	\$0	\$0
TOTAL - PROGRAM	\$10,410,917	\$10,589,560	\$10,589,560	\$6,018,860	\$76,705	58%	\$10,589,560	\$0
FUND SUMMARY								
GENERAL FUND	\$3,846,943	\$0	\$0	\$0	\$0	0%	\$0	\$0
NURSING CARE INSTITUTE RESIDENT PROTECTION FU	\$28,694	\$38,000	\$38,000	\$0	\$0	0%	\$38,000	\$0
FEDERAL CHILD CARE AND DEV. FUND BLOCK GRANT	\$781,773	\$836,100	\$836,100	\$420,650	\$0	50%	\$836,100	\$0
FEDERAL TITLE XIX FUNDS	\$667,003	\$936,460	\$936,460	\$394,564	\$1,609	42%	\$936,460	\$0
HEARING AND SPEECH PROFESSIONALS FUND	\$315,027	\$315,700	\$315,700	\$194,248	\$6,001	63%	\$315,700	\$0
SERVICE FEES INCREASES	\$567,077	\$0	\$0	\$0	\$0	0%	\$0	\$0
HEALTH SERVICE LICENSING FUND	\$4,204,400	\$8,463,300	\$8,463,300	\$5,009,398	\$69,095	60%	\$8,463,300	\$0
TOTAL - ALL SOURCES	\$10,410,917	\$10,589,560	\$10,589,560	\$6,018,860	\$76,705	58%	\$10,589,560	\$0

PUBLIC HEALTH SERVICES

FISCAL YEAR 2011

MONTH END January-11

PERCENTAGE OF TIME ELAPSED

58%

EXPENDITURE DETAIL	TOTAL			YEAR TO DATE			ANNUALIZED	
	FY 2010 ACTUAL	FY 2011 APPROP	FY 2011 ALLOC	FY 2011 ACTUAL	FY 2011 ENCUMB	%EXP/ ENC	FY 2011 PROJECTED	OVER(+)/ UNDER(-)
FTE POSITIONS	209.7	209.7	209.7					
PERSONAL SERVICES	\$2,638,577	\$2,679,873	\$2,679,873	\$1,592,624	\$0	59%	\$2,679,873	\$0
EMPLOYEE RELATED EXPENDITURES	\$1,390,747	\$1,288,824	\$1,288,824	\$1,084,142	\$0	84%	\$1,288,824	\$0
SUBTOTAL - P/S ERE	\$4,029,324	\$3,968,697	\$3,968,697	\$2,676,766	\$0	67%	\$3,968,697	\$0
PROFESSIONAL AND OUTSIDE SERVICES	\$22,531	\$24,530	\$24,530	\$8,173	\$10,750	77%	\$24,530	\$0
TRAVEL- IN STATE	\$26,178	\$32,650	\$32,650	\$6,598	\$0	20%	\$32,650	\$0
TRAVEL- OUT OF STATE	\$0	\$0	\$0	\$823	\$0	0%	\$0	\$0
OTHER OPERATING EXPENDITURES	\$393,704	\$457,709	\$457,709	\$153,039	\$27,109	39%	\$457,709	\$0
EQUIPMENT	\$1,692	\$0	\$0	\$1,193	\$311	0%	\$0	\$0
SUBTOTAL - OTHER OPERATING EXPENSES	\$444,105	\$514,889	\$514,889	\$169,826	\$38,170	40%	\$514,889	\$0
TOTAL - ALL OPERATING	\$4,473,429	\$4,483,586	\$4,483,586	\$2,846,592	\$38,170	64%	\$4,483,586	\$0
SPECIAL LINE ITEM:								
COUNTY TUBERCULOSIS PROVIDER CARE AND CONTROL	\$585,688	\$591,700	\$591,700	\$208,748	\$223,026	73%	\$591,700	\$0
AZ STATEWIDE IMMUNIZATION INFO. SYSTEM	\$215,458	\$210,200	\$210,200	\$132,732	\$0	63%	\$210,200	\$0
AIDS REPORTING AND SURVEILLANCE	\$1,000,000	\$1,000,000	\$1,000,000	\$505,317	\$153,448	66%	\$1,000,000	\$0
LABORATORY SERVICES	\$4,439,879	\$4,567,600	\$4,567,600	\$2,389,522	\$295,811	59%	\$4,567,600	\$0
RENAL AND NONRENAL DISEASE MANAGEMENT	\$198,000	\$198,000	\$198,000	\$0	\$0	0%	\$198,000	\$0
VITAL RECORDS MAINTENANCE	\$433,700	\$426,400	\$426,400	\$197,815	\$69,015	63%	\$426,400	\$0
LOAN REPAYMENT	\$244,325	\$650,000	\$650,000	\$27,725	\$41,250	11%	\$650,000	\$0
ALZHEIMER DISEASE RESEARCH	\$2,250,000	\$1,125,000	\$1,125,000	\$0	\$0	0%	\$1,125,000	\$0
SCORPION ANTIVENOM	\$120,000	\$120,000	\$120,000	\$30,000	\$30,000	50%	\$120,000	\$0
POISON CONTROL CENTER	\$990,000	\$990,000	\$990,000	\$161,827	\$409,327	58%	\$990,000	\$0
EMS OPERATIONS	\$2,521,939	\$2,346,800	\$2,346,800	\$1,368,732	\$93,539	62%	\$2,346,800	\$0
TRAUMA ADVISORY BOARD	\$316,373	\$402,500	\$402,500	\$195,088	\$29,100	56%	\$402,500	\$0
SUBTOTAL - SPECIAL LINE ITEMS	\$13,315,362	\$12,628,200	\$12,628,200	\$5,217,506	\$1,344,516	52%	\$12,628,200	\$0
TOTAL - PROGRAM	\$17,788,791	\$17,111,786	\$17,111,786	\$8,064,098	\$1,382,686	55%	\$17,111,786	\$0
FUND SUMMARY								
GENERAL FUND	\$12,924,295	\$10,524,786	\$10,524,786	\$5,429,720	\$1,105,065	62%	\$10,524,786	\$0
TOBACCO TAX - HEALTH RESEARCH FUND/ACCOUNT	\$0	\$1,000,000	\$1,000,000	\$0	\$0	0%	\$1,000,000	\$0
TOBACCO TAX - MEDICALLY NEEDY ACCOUNT	\$0	\$0	\$0	\$0	\$0	0%	\$0	\$0
EMERGENCY MEDICAL SERVICES OPERATING FUND	\$3,737,619	\$4,236,600	\$4,236,600	\$1,967,576	\$202,059	51%	\$4,236,600	\$0
ENVIRONMENTAL LAB LICENSURE REVOLVING FUND	\$693,177	\$924,000	\$924,000	\$468,987	\$6,547	51%	\$924,000	\$0
VITAL RECORDS ELECTRONIC SYSTEMS FUND	\$433,700	\$426,400	\$426,400	\$197,815	\$69,015	63%	\$426,400	\$0
TOTAL - ALL SOURCES	\$17,788,791	\$17,111,786	\$17,111,786	\$8,064,098	\$1,382,686	55%	\$17,111,786	\$0

EMERGENCY MEDICAL SERVICES OPERATING

FISCAL YEAR 2011

MONTH END

January-11

PERCENTAGE OF TIME
ELAPSED

58%

TOTAL

YEAR TO DATE

ANNUALIZED

<u>EXPENDITURE DETAIL</u>	FY 2010 ACTUAL	FY 2011 APPROP	FY 2011 ALLOC	FY 2011 ACTUAL	FY 2011 ENCUMB	%EXP/ ENC	FY 2011 PROJECTED	OVER(+)/ UNDER(-)
FTE POSITIONS	35.0	35.0	35.0					
PERSONAL SERVICES	\$1,441,175	\$1,400,231	\$1,400,231	\$808,770	\$0	58%	\$1,400,231	\$0
EMPLOYEE RELATED EXPENDITURES	\$587,884	\$576,295	\$576,295	\$346,339	\$0	60%	\$576,295	\$0
SUBTOTAL - P/S ERE	<u>\$2,029,059</u>	<u>\$1,976,526</u>	<u>\$1,976,526</u>	<u>\$1,155,109</u>	<u>\$0</u>	58%	<u>\$1,976,526</u>	<u>\$0</u>
PROFESSIONAL AND OUTSIDE SERVICES	\$96,427	\$7,000	\$7,000	\$2,340	\$0	33%	\$7,000	\$0
TRAVEL- IN STATE	\$40,566	\$48,550	\$48,550	\$12,622	\$0	26%	\$48,550	\$0
TRAVEL- OUT OF STATE	\$3,051	\$5,000	\$5,000	\$3,530	\$0	71%	\$5,000	\$0
OTHER OPERATING EXPENDITURES	\$324,101	\$307,204	\$307,204	\$192,640	\$93,538	93%	\$307,204	\$0
EQUIPMENT	\$28,735	\$2,520	\$2,520	\$2,491	\$1	99%	\$2,520	\$0
SUBTOTAL - OTHER OPERATING EXPENSES	<u>\$492,880</u>	<u>\$370,274</u>	<u>\$370,274</u>	<u>\$213,623</u>	<u>\$93,539</u>	83%	<u>\$370,274</u>	<u>\$0</u>
TOTAL - PROGRAM	<u>\$2,521,939</u>	<u>\$2,346,800</u>	<u>\$2,346,800</u>	<u>\$1,368,732</u>	<u>\$93,539</u>	62%	<u>\$2,346,800</u>	<u>\$0</u>
FUND SUMMARY								
EMERGENCY MEDICAL SERVICES OPERATING FUND	<u>\$2,521,939</u>	<u>\$2,346,800</u>	<u>\$2,346,800</u>	<u>\$1,368,732</u>	<u>\$93,539</u>	62%	<u>\$2,346,800</u>	<u>\$0</u>
TOTAL - ALL SOURCES	\$2,521,939	\$2,346,800	\$2,346,800	\$1,368,732	\$93,539	62%	\$2,346,800	\$0

STATE LABORATORY SERVICES

FISCAL YEAR 2011

MONTH END EXPENDITURE DETAIL	January-11			PERCENTAGE OF TIME ELAPSED			ANNUALIZED	
	TOTAL			YEAR TO DATE				
	FY 2010 ACTUAL	FY 2011 APPROP	FY 2011 ALLOC	FY 2011 ACTUAL	FY 2011 ENCUMB	%EXP/ ENC	FY 2011 PROJECTED	OVER(+/ UNDER(-)
FTE POSITIONS	70.9	70.9	70.9					
PERSONAL SERVICES	\$1,679,063	\$1,711,922	\$1,711,922	\$1,031,596	\$0	60%	\$1,711,922	\$0
EMPLOYEE RELATED EXPENDITURES	\$778,164	\$797,931	\$797,931	\$698,203	\$0	88%	\$797,931	\$0
SUBTOTAL - P/S ERE	<u>\$2,457,227</u>	<u>\$2,509,853</u>	<u>\$2,509,853</u>	<u>\$1,729,799</u>	<u>\$0</u>	69%	<u>\$2,509,853</u>	<u>\$0</u>
PROFESSIONAL AND OUTSIDE SERVICES	\$143,698	\$381,949	\$381,949	\$154,644	\$57,490	56%	\$381,949	\$0
TRAVEL- IN STATE	\$24,075	\$20,970	\$20,970	\$10,298	\$0	49%	\$20,970	\$0
TRAVEL- OUT OF STATE	\$34,952	\$40,000	\$40,000	\$20,384	\$0	51%	\$40,000	\$0
OTHER OPERATING EXPENDITURES	\$1,726,727	\$1,573,500	\$1,573,500	\$470,514	\$238,321	45%	\$1,573,500	\$0
EQUIPMENT	\$53,200	\$41,328	\$41,328	\$3,883	\$0	9%	\$41,328	\$0
SUBTOTAL - OTHER OPERATING EXPENSES	<u>\$1,982,652</u>	<u>\$2,057,747</u>	<u>\$2,057,747</u>	<u>\$659,723</u>	<u>\$295,811</u>	46%	<u>\$2,057,747</u>	<u>\$0</u>
TOTAL - PROGRAM	<u><u>\$4,439,879</u></u>	<u><u>\$4,567,600</u></u>	<u><u>\$4,567,600</u></u>	<u><u>\$2,389,522</u></u>	<u><u>\$295,811</u></u>	59%	<u><u>\$4,567,600</u></u>	<u><u>\$0</u></u>
FUND SUMMARY								
GENERAL FUND	\$3,746,702	\$3,643,600	\$3,643,600	\$1,920,534	\$289,263	61%	\$3,643,600	\$0
ENVIRONMENTAL LAB LICENSURE REVOLVING FUND	\$693,177	\$924,000	\$924,000	\$468,988	\$6,548	51%	\$924,000	\$0
TOTAL - ALL SOURCES	<u>\$4,439,879</u>	<u>\$4,567,600</u>	<u>\$4,567,600</u>	<u>\$2,389,522</u>	<u>\$295,811</u>	59%	<u>\$4,567,600</u>	<u>\$0</u>

COMMUNITY AND FAMILY HEALTH SERVICES

FISCAL YEAR 2011

MONTH END	January-11			PERCENTAGE OF TIME ELAPSED				
	TOTAL			YEAR TO DATE			ANNUALIZED	
	FY 2010 ACTUAL	FY 2011 APPROP	FY 2011 ALLOC	FY 2011 ACTUAL	FY 2011 ENCUMB	%EXP/ ENC	FY 2011 PROJECTED	OVER(+)/ UNDER(-)
EXPENDITURE DETAIL								
FTE POSITIONS	131.3	131.3	131.3					
PERSONAL SERVICES	\$2,370,169	\$2,790,932	\$2,790,932	\$766,671	\$0	27%	\$2,790,932	\$0
EMPLOYEE RELATED EXPENDITURES	\$1,109,463	\$1,237,623	\$1,237,623	\$678,704	\$0	55%	\$1,237,623	\$0
SUBTOTAL - P/S ERE	\$3,479,632	\$4,028,555	\$4,028,555	\$1,445,375	\$0		\$4,028,555	\$0
PROFESSIONAL AND OUTSIDE SERVICES	\$103,350	\$295,791	\$295,791	\$59,110	\$1,050	20%	\$295,791	\$0
TRAVEL- IN STATE	\$2,641	\$3,432	\$3,432	\$1,515	\$0	44%	\$3,432	\$0
TRAVEL- OUT OF STATE	\$0	\$0	\$0	\$0	\$0	0%	\$0	\$0
OTHER OPERATING EXPENDITURES	\$884,668	\$563,734	\$563,734	\$184,059	\$6,145	34%	\$563,734	\$0
EQUIPMENT	\$552	\$1,890	\$1,890	\$318	\$311	33%	\$1,890	\$0
SUBTOTAL - OTHER OPERATING EXPENSES	\$991,211	\$864,847	\$864,847	\$245,002	\$7,506	29%	\$864,847	\$0
TOTAL - ALL OPERATING	\$4,470,843	\$4,893,402	\$4,893,402	\$1,690,377	\$7,506	35%	\$4,893,402	\$0
SPECIAL LINE ITEM:								
AHCCCS - CRS STATE MATCH	\$22,570,222	\$21,861,670	\$21,861,670	\$21,861,670	\$0	100%	\$29,775,034	(\$7,913,364)
AHCCCS - CRS TITLE XIX	\$67,641,497	\$67,079,897	\$67,079,897	\$38,843,974	\$0	58%	\$84,784,541	(\$17,704,644)
MEDICAID SPECIAL EXEMPTION PAYMENTS - STATE MATCH	\$568,400	\$437,227	\$437,227	\$437,226	\$0	100%	\$595,501	(\$158,274)
MEDICAID SPECIAL EXEMPTION PAYMENTS - TITLE XIX	\$1,392,611	\$1,341,576	\$1,341,576	\$671,698	\$0	62%	\$1,695,691	(\$354,115)
ADULT CYSTIC FIBROSIS	\$105,200	\$105,200	\$105,200	\$52,600	\$0	50%	\$105,200	\$0
HIGH RISK PERINATAL SERVICES	\$1,820,945	\$2,543,400	\$2,543,400	\$921,449	\$927,531	73%	\$2,543,400	\$0
NEWBORN SCREENING PROGRAM	\$4,900,723	\$6,271,300	\$6,271,300	\$2,836,517	\$1,389,698	67%	\$6,271,300	\$0
CHILD FATALITY REVIEW TEAM	\$225,399	\$242,600	\$242,600	\$108,292	\$24,990	55%	\$242,600	\$0
BREAST AND CERVICAL CANCER SCREENING	\$1,098,106	\$1,346,700	\$1,346,700	\$477,633	\$423,086	67%	\$1,346,700	\$0
FOLIC ACID	\$399,999	\$400,000	\$400,000	\$0	\$137,193	34%	\$400,000	\$0
SUBTOTAL - SPECIAL LINE ITEMS	\$100,723,102	\$101,629,570	\$101,629,570	\$66,211,059	\$2,902,498	68%	\$127,759,967	(\$26,130,397)
TOTAL - PROGRAM	\$105,193,945	\$106,522,972	\$106,522,972	\$67,901,436	\$2,910,004	66%	\$132,653,369	(\$26,130,397)
FUND SUMMARY								
GENERAL FUND	\$28,382,086	\$28,193,794	\$28,193,794	\$25,095,234	\$1,183,394	93%	\$36,265,432	(\$8,071,638)
NEWBORN SCREENING PROGRAM FUND	\$4,900,723	\$6,271,300	\$6,271,300	\$2,836,516	\$1,389,698	67%	\$6,271,300	\$0
EMERGENCY MEDICAL SERVICES OPERATING FUND	\$398,561	\$597,200	\$597,200	\$179,942	\$197,369	63%	\$597,200	\$0
CHILD FATALITY REVIEW FUND	\$99,100	\$95,400	\$95,400	\$38,561	\$0	40%	\$95,400	\$0
FEDERAL TITLE XIX FUNDS	\$71,013,476	\$70,965,278	\$70,965,278	\$39,751,183	\$2,350	56%	\$89,024,037	(\$18,058,759)
TOBACCO TAX AND HEALTH CARE FUND	\$399,999	\$400,000	\$400,000	\$0	\$137,193	34%	\$400,000	\$0
TOTAL - ALL SOURCES	\$105,193,945	\$106,522,972	\$106,522,972	\$67,901,436	\$2,910,004	66%	\$132,653,369	(\$26,130,397)

BEHAVIORAL HEALTH SERVICES

FISCAL YEAR 2011

MONTH END	January-11			PERCENTAGE OF TIME ELAPSED			YEAR TO DATE		
	FY 2010 ACTUAL	FY 2011 APPROP (1)	FY 2011 ALLOC	FY 2011 ACTUAL	FY 2011 ENCUMB	%EXP/ ENC	FY 2011 PROJECTED	OVER(+)/ UNDER(-)	
TOTAL									
EXPENDITURE DETAIL									
FTE POSITIONS	153.0	153.0	153.0						
PERSONAL SERVICES	\$3,637,521	\$3,872,629	\$3,872,629	\$1,738,683	\$0	45%	\$3,872,629	\$0	
EMPLOYEE RELATED EXPENDITURES	\$1,757,252	\$1,949,445	\$1,949,445	\$1,109,101	\$0	57%	\$1,949,445	\$0	
SUBTOTAL - P/S ERE	\$5,394,773	\$5,822,074	\$5,822,074	\$2,847,784	\$0	49%	\$5,822,074	\$0	
PROFESSIONAL AND OUTSIDE SERVICES	\$400,453	\$921,092	\$921,092	\$190,129	\$287,927	52%	\$921,092	\$0	
TRAVEL- IN STATE	\$34,847	\$52,502	\$52,502	\$9,618	\$0	18%	\$52,502	\$0	
TRAVEL- OUT OF STATE	\$0	\$7,062	\$7,062	\$1,157	\$0	16%	\$7,062	\$0	
OTHER OPERATING EXPENDITURES	\$1,673,197	\$7,170,058	\$7,170,058	\$810,806	\$253,229	15%	\$7,170,058	\$0	
EQUIPMENT	\$574,086	\$321,563	\$321,563	\$2,150	\$2,506	1%	\$321,563	\$0	
SUBTOTAL - OTHER OPERATING EXPENSES	\$2,682,583	\$8,472,277	\$8,472,277	\$1,013,860	\$543,662	18%	\$8,472,277	\$0	
TOTAL - ALL OPERATING	\$8,077,356	\$14,294,351	\$14,294,351	\$3,861,644	\$543,662	31%	\$14,294,351	\$0	
SPECIAL LINE ITEM:									
<i>Administration</i>									
MEDICARE PART D CLAWBACK	\$7,792,936	\$8,581,500	\$8,581,500	\$6,436,125	\$0	75% (2)	\$8,581,500	\$0	
PROPOSITION 204 ADMIN - STATE MATCH	\$2,130,200	\$1,642,773	\$1,642,773	\$1,407,453	\$0	86%	\$1,642,773	\$0	
PROPOSITION 204 ADMIN - TITLE XIX	\$3,835,929	\$5,250,873	\$5,250,873	\$1,347,140	\$359,391	32%	\$5,250,873	\$0	
MEDICAID SPECIAL EXEMPTION - STATE MATCH	\$7,909,400	\$6,314,053	\$6,314,053	\$5,409,591	\$0	86%	\$7,183,110	(\$869,057)	
MEDICAID SPECIAL EXEMPTION - AHCCCS TITLE XIX	\$17,306,044	\$20,181,896	\$20,181,896	\$7,484,645	\$0	37%	\$19,275,035	\$906,861	
MEDICARE PART D	\$0	\$0	\$0	\$0	\$0	0%	\$0	\$0	
<i>Children's Behavioral Health</i>									
CHILDREN'S BEHAVIORAL HEALTH SERVICES	\$4,092,490	\$0	\$0	\$0	\$0	0%	\$0	\$0	
CHILDREN'S STATE MATCH FOR TITLE XIX	\$101,632,879	\$123,806,198	\$123,806,198	\$95,219,602	\$1,814,618	78%	\$103,640,844	\$20,165,354	
CHILDREN'S - AHCCCS TITLE XIX	\$315,328,974	\$395,727,416	\$395,727,416	\$138,566,712	\$0	35%	\$296,113,404	\$99,614,012	
PROPOSITION 204 CHILDREN'S - STATE MATCH	\$1,262,866	\$2,106,355	\$2,106,355	\$1,716,525	\$0	81%	\$1,984,447	\$121,908	
PROPOSITION 204 CHILDREN'S - AHCCCS TITLE XIX	\$3,903,586	\$7,634,798	\$7,634,798	\$1,207,341	\$0	16%	\$5,686,732	\$1,948,066	
<i>Seriously Mentally Ill</i>									
SERIOUSLY MENTALLY ILL STATE MATCH FOR TITLE XIX	\$48,943,931	\$44,709,944	\$44,709,944	\$38,305,435	\$0	86%	\$62,099,402	(\$17,389,458)	
SERIOUSLY MENTALLY ILL - AHCCCS TITLE XIX	\$169,820,868	\$142,908,440	\$142,908,440	\$102,285,111	\$0	72%	\$177,371,230	(\$34,462,790)	
SERIOUSLY MENTALLY ILL NON-TITLE XIX	\$56,049,697	\$0	\$0	\$0	\$0	0%	\$0	\$0	
COURT MONITORING	\$0	\$0	\$0	\$0	\$0	0%	\$0	\$0	
ARNOLD v. SARN	\$37,096,286	\$0	\$0	\$0	\$0	0%	\$0	\$0	
PROPOSITION 204 SMI - STATE MATCH	\$61,519,664	\$48,802,545	\$48,802,545	\$39,770,512	\$0	81%	\$80,535,559	(\$31,733,014)	
PROPOSITION 204 SMI - AHCCCS TITLE XIX	\$224,684,817	\$176,891,990	\$176,891,990	\$139,396,783	\$0	79%	\$229,975,092	(\$53,083,102)	
NON-TITLE XIX PRSCRIPTION MEDICATION	\$0	\$40,154,900	\$40,154,900	\$22,754,509	\$0	57%	\$40,154,900	\$0	
SUPPORTED HOUSING	\$0	\$5,324,800	\$5,324,800	\$2,930,916	\$339,661	61%	\$5,324,800	\$0	
<i>General Mental Health/Substance Abuse</i>									
MENTAL HEALTH NON-TITLE XIX	\$1,274,374	\$0	\$0	\$0	\$0	0%	\$0	\$0	
SUBSTANCE ABUSE NON-TITLE XIX	\$3,892,018	\$0	\$0	\$0	\$0	0%	\$0	\$0	
MENTAL HEALTH/SUBSTANCE ABUSE STATE MATCH FOR TITLE XIX	\$37,568,700	\$32,299,680	\$32,299,680	\$26,388,573	\$900,000	84%	\$31,737,495	\$562,185	
MENTAL HEALTH/SUBSTANCE ABUSE - AHCCCS TITLE XIX	\$79,011,532	\$100,949,886	\$100,949,886	\$45,952,490	\$0	46%	\$90,653,669	\$10,296,217	
PROPOSITION 204 GMH/SA - STATE MATCH	\$37,317,911	\$34,462,875	\$34,462,875	\$28,084,728	\$0	81%	\$43,667,498	(\$9,204,623)	
PROPOSITION 204 GMH/SA - AHCCCS TITLE XIX	\$114,560,605	\$124,915,752	\$124,915,752	\$57,018,542	\$0	46%	\$124,695,686	\$220,066	
CRISIS SERVICES	\$0	\$16,391,100	\$16,391,100	\$9,561,474	\$0	58%	\$16,391,100	\$0	
SUBTOTAL - SPECIAL LINE ITEMS	\$1,336,935,507	\$1,339,057,774	\$1,339,057,774	\$771,244,207	\$3,413,670	58%	\$1,351,965,149	(\$12,907,375)	
<i>Additional Appropriations</i>									
CONTRACT COMPLIANCE	\$3,885,027	\$4,912,368	\$4,912,368	\$2,305,252	\$0	47%	\$4,912,368	\$0	
SUBTOTAL - ADDITIONAL APPROPRIATIONS	\$3,885,027	\$4,912,368	\$4,912,368	\$2,305,252	\$0	47%	\$4,912,368	\$0	
TOTAL - PROGRAM	\$1,348,897,890	\$1,358,264,493	\$1,358,264,493	\$777,411,103	\$3,957,332	58%	\$1,371,171,868	(\$12,907,375)	
FUND SUMMARY									
GENERAL FUND	\$367,561,163	\$332,134,731	\$332,134,731	\$264,198,597	\$353,978	80%	\$370,481,436	(\$38,346,705)	
TOBACCO TAX - MEDICALLY NEEDY ACCOUNT	\$35,024,800	\$34,767,000	\$34,767,000	\$15,927,894	\$2,714,618	54%	\$34,767,000	\$0	
SUBSTANCE ABUSE SERVICES FUND	\$1,083,332	\$2,250,000	\$2,250,000	\$1,312,500	\$0	58%	\$2,250,000	\$0	
FEDERAL TITLE XIX FUNDS	\$945,228,595	\$989,112,762	\$989,112,762	\$495,972,112 (3)	\$888,736	50%	\$963,673,432	\$25,439,330	
TOTAL - ALL SOURCES	\$1,348,897,890	\$1,358,264,493	\$1,358,264,493	\$777,411,103	\$3,957,332	58%	\$1,371,171,868	(\$12,907,375)	

(1) Appropriation is based on the feed bill with adjustment for S.B.1043.
 (2) Clawback is transferred out quarterly.
 (3) There is a reporting methodology change starting from January 2011

ARIZONA STATE HOSPITAL SUMMARY

FISCAL YEAR 2011

MONTH END

January-11

PERCENTAGE OF TIME
ELAPSED

58%

EXPENDITURE DETAIL	TOTAL			YEAR TO DATE			ANNUALIZED	
	FY 2010 ACTUAL	FY 2011 APPROP	FY 2011 ALLOC	FY 2011 ACTUAL	FY 2011 ENCUMB	%EXP/ ENC	FY 2011 PROJECTED	OVER(+)/ UNDER(-)
FTE POSITIONS	748.9	748.9 *	748.9 *					
PERSONAL SERVICES	\$28,987,464	\$27,331,000	\$27,331,000	\$16,458,560	\$0	60%	\$27,331,000	\$0
EMPLOYEE RELATED EXPENDITURES	\$10,577,606	\$10,219,230	\$10,219,230	\$7,923,527	\$0	78%	\$10,219,230	\$0
SUBTOTAL - P/S ERE	\$39,565,070	\$37,550,230	\$37,550,230	\$24,382,087	\$0	65%	\$37,550,230	\$0
PROFESSIONAL AND OUTSIDE SERVICES	\$7,479,760	\$8,679,300	\$8,679,300	\$3,660,466	\$1,372,233	58%	\$8,679,300	\$0
TRAVEL- IN STATE	\$61,580	\$75,000	\$75,000	\$15,271	\$2,292	23%	\$75,000	\$0
TRAVEL- OUT OF STATE	\$432	\$1,000	\$1,000	\$0	\$0	0%	\$1,000	\$0
OTHER OPERATING EXPENDITURES	\$5,343,474	\$7,155,697	\$7,155,697	\$3,358,372	\$217,096	50%	\$7,155,697	\$0
EQUIPMENT	\$191,887	\$126,000	\$126,000	\$21,285	\$22,477	35%	\$126,000	\$0
SUBTOTAL - OTHER OPERATING EXPENSES	\$13,077,133	\$16,036,997	\$16,036,997	\$7,055,394	\$1,614,098	54%	\$16,036,997	\$0
TOTAL - ALL OPERATING	\$52,642,203	\$53,587,227	\$53,587,227	\$31,437,481	\$1,614,098	62%	\$53,587,227	\$0
SPECIAL LINE ITEM:								
COMMUNITY PLACEMENT TREATMENT	\$0	\$1,130,700	\$1,130,700	\$0	\$0	0%	\$1,130,700	\$0
SEXUALLY VIOLENT PERSONS	\$8,792,296	\$9,696,400	\$9,696,400	\$5,196,972	\$362,311	57%	\$9,696,400	\$0
ASH FORENSIC UNIT DEBT SERVICE	\$3,111,700	\$3,111,700	\$3,111,700	\$3,111,700	\$0		\$3,111,700	
SUBTOTAL - SPECIAL LINE ITEMS	\$11,903,996	\$13,938,800	\$13,938,800	\$8,308,672	\$362,311	62%	\$13,938,800	\$0
TOTAL - PROGRAM	\$64,546,199	\$67,526,027	\$67,526,027	\$39,746,153	\$1,976,409	62%	\$67,526,027	\$0
FUND SUMMARY								
GENERAL FUND	\$55,744,750	\$55,216,527	\$55,216,527	\$35,233,361	\$329,930	64%	\$55,216,527	\$0
ARIZONA STATE HOSPITAL FUND	\$8,381,384	\$11,159,500	\$11,159,500	\$4,430,724	\$1,616,235	54%	\$11,159,500	\$0
STATE HOSPITAL LAND EARNINGS FUND	\$420,065	\$1,150,000	\$1,150,000	\$82,068	\$30,244	10%	\$1,150,000	\$0
TOTAL - ALL SOURCES	\$64,546,199	\$67,526,027	\$67,526,027	\$39,746,153	\$1,976,409	62%	\$67,526,027	\$0

* Includes 166.2 FTE Positions funded from Special Line Items.

SEXUALLY VIOLENT PERSONS - SLI

FISCAL YEAR 2011

MONTH END **January-11**

PERCENTAGE OF TIME
ELAPSED

58%

EXPENDITURE DETAIL	TOTAL			YEAR TO DATE			ANNUALIZED	
	FY 2010 ACTUAL	FY 2011 APPROP	FY 2011 ALLOC	FY 2011 ACTUAL	FY 2011 ENCUMB	%EXP/ ENC	FY 2011 PROJECTED	OVER(+)/ UNDER(-)
FTE POSITIONS	166.2	166.2	166.2					
PERSONAL SERVICES	\$2,683,048	\$2,464,500	\$2,464,500	\$1,464,387	\$0	59%	\$2,464,500	\$0
EMPLOYEE RELATED EXPENDITURES	\$1,725,580	\$1,695,000	\$1,695,000	\$1,583,065	\$0	93%	\$1,695,000	\$0
SUBTOTAL - P/S ERE	\$4,408,628	\$4,159,500	\$4,159,500	\$3,047,452	\$0	73%	\$4,159,500	\$0
PROFESSIONAL AND OUTSIDE SERVICES	\$1,532,496	\$2,249,500	\$2,249,500	\$795,293	\$302,501	49%	\$2,249,500	\$0
TRAVEL- IN STATE	\$50,525	\$60,000	\$60,000	\$12,469	\$1,530	23%	\$60,000	\$0
TRAVEL- OUT OF STATE	\$8	\$1,000	\$1,000	\$0	\$0	0%	\$1,000	\$0
OTHER OPERATING EXPENDITURES	\$703,852	\$1,215,900	\$1,215,900	\$107,258	\$34,760	12%	\$1,215,900	\$0
EQUIPMENT	\$241,637	\$70,000	\$70,000	\$3,692	\$5,305	13%	\$70,000	\$0
SUBTOTAL - OTHER OPERATING EXPENSES	\$2,528,518	\$3,596,400	\$3,596,400	\$918,712	\$344,096	35%	\$3,596,400	\$0
TOTAL - ALL OPERATING	\$6,937,146	\$7,755,900	\$7,755,900	\$3,966,164	\$344,096	56%	\$7,755,900	\$0
TOTAL - NON-LRA	\$6,937,146	\$7,755,900	\$7,755,900	\$3,966,164	\$344,096	56%	\$7,755,900	\$0
EXPENDITURE DETAIL - LRA								
FTE POSITIONS	17.0	17.0	17.0					
PERSONAL SERVICES	\$1,450,500	\$1,535,500	\$1,535,500	\$989,752	\$0	64%	\$1,535,500	\$0
EMPLOYEE RELATED EXPENDITURES	\$324,250	\$320,000	\$320,000	\$214,017	\$0	67%	\$320,000	\$0
SUBTOTAL - P/S ERE	\$1,774,750	\$1,855,500	\$1,855,500	\$1,203,769	\$0	65%	\$1,855,500	\$0
PROFESSIONAL AND OUTSIDE SERVICES	\$0	\$0	\$0	\$0	\$0	0%	\$0	\$0
TRAVEL- IN STATE	\$0	\$0	\$0	\$0	\$0	0%	\$0	\$0
TRAVEL- OUT OF STATE	\$0	\$0	\$0	\$0	\$0	0%	\$0	\$0
OTHER OPERATING EXPENDITURES	\$80,400	\$85,000	\$85,000	\$27,039	\$18,215	53%	\$85,000	\$0
EQUIPMENT	\$0	\$0	\$0	\$0	\$0	0%	\$0	\$0
SUBTOTAL - OTHER OPERATING EXPENSES	\$80,400	\$85,000	\$85,000	\$27,039	\$18,215	53%	\$85,000	\$0
TOTAL - ALL OPERATING	\$1,855,150	\$1,940,500	\$1,940,500	\$1,230,808	\$18,215	64%	\$1,940,500	\$0
TOTAL - LRA	\$1,855,150	\$1,940,500	\$1,940,500	\$1,230,808	\$18,215	64%	\$1,940,500	\$0
TOTAL - SVP SLI	\$8,792,296	\$9,696,400	\$9,696,400	\$5,196,972	\$362,311	57%	\$9,696,400	\$0
FUND SUMMARY								
GENERAL FUND	\$7,377,872	\$7,546,900	\$7,546,900	\$4,401,679	\$93,310	99%	\$7,546,900	\$0
ARIZONA STATE HOSPITAL FUND	\$1,414,424	\$2,149,500	\$2,149,500	\$795,293	\$269,001	78%	\$2,149,500	\$0
TOTAL - ALL SOURCES	\$8,792,296	\$9,696,400	\$9,696,400	\$5,196,972	\$362,311	57%	\$9,696,400	\$0

APPROPRIATION IS LUMP SUM AND REFLECTED AS SLI IN ARIZONA STATE HOSPITAL. DETAIL PROVIDED FOR INFORMATION PURPOSES ONLY.

ARIZONA STATE HOSPITAL MONTHLY CENSUS

- **General Population End-of-Month, Including Admissions/Discharges**
 - January 2011 included
- **Patient Days by Month**
 - January 2011 included
- **RTC Census Data**
 - January 2011 included



Arizona State Hospital

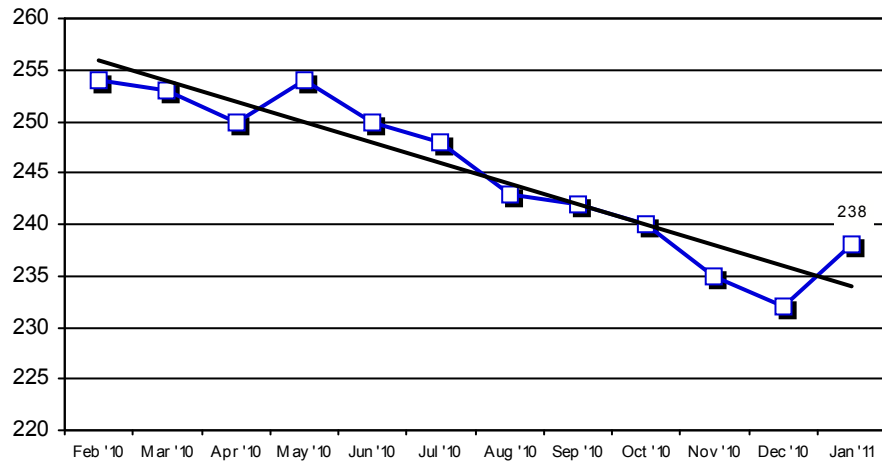
End Of Month Census

February 2010 - January 2011

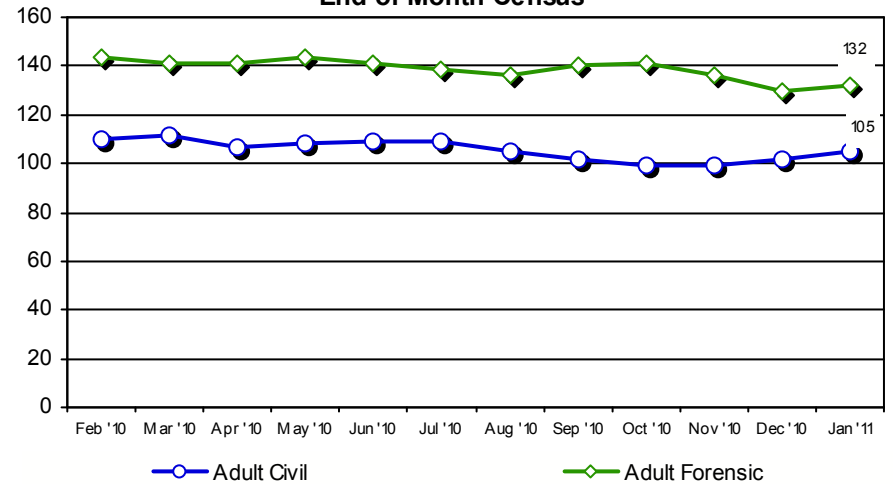


Month	Legal Status Unknown			Civil			Forensic			Total		
	Adm	D/C	Census	Adm	D/C	Census	Adm	D/C	Census	Adm	D/C	Census
February-2010	0	0	0	0	1	110	7	8	144	7	9	254
March-2010	0	0	0	4	3	112	9	11	141	13	14	253
April-2010	0	0	2	4	6	107	7	8	141	11	14	250
May-2010	0	0	2	4	3	108	8	5	144	12	8	254
June-2010	0	0	0	3	6	109	7	8	141	10	14	250
July-2010	0	0	0	3	3	109	4	6	139	7	9	248
August-2010	0	0	2	3	5	105	4	7	136	7	12	243
September-2010	0	0	0	3	8	102	9	5	140	12	13	242
October-2010	0	0	0	4	7	99	4	3	141	8	10	240
November-2010	0	0	0	3	3	99	1	6	136	4	9	235
December-2010	0	0	0	7	4	102	3	9	130	10	13	232
January-2011	1	0	1	7	4	105	4	2	132	12	6	238

Arizona State Hospital: End Of Month Census



Arizona State Hospital: Adult Civil and Adult Forensic End of Month Census





Arizona State Hospital
Patient Days By Unit
FY11



UNIT	JUL	AUG	SEP	OCT	NOV	DEC	JAN	FEB	MAR	APR	MAY	JUN	TOTAL
CRU	712	693	647	681	660	669	656	0	0	0	0	0	4718
DS1E	603	553	531	542	501	573	620	0	0	0	0	0	3923
DS1N	530	580	598	575	540	567	590	0	0	0	0	0	3980
IW1E	578	581	514	440	450	454	484	0	0	0	0	0	3501
IW1N	604	589	585	540	481	544	567	0	0	0	0	0	3910
IW2E	442	435	450	465	450	446	465	0	0	0	0	0	3153
IW2N	489	487	436	465	450	458	459	0	0	0	0	0	3244
PVE	574	588	579	584	567	518	511	0	0	0	0	0	3921
PVN	446	415	390	435	400	412	433	0	0	0	0	0	2931
W1	609	653	580	558	443	461	438	0	0	0	0	0	3742
W2	425	419	380	459	496	473	435	0	0	0	0	0	3087
W3	515	369	466	611	57	0	0	0	0	0	0	0	2018
W4	0	0	0	0	590	630	638	0	0	0	0	0	1858
W5	1202	1209	1151	1142	1017	981	952	0	0	0	0	0	7654
TOTAL	7729	7571	7307	7497	7102	7186	7248	0	0	0	0	0	51640

Month	Days in Month	Patient Days	Average Daily Census	Average Daily Census YTD
July	31	7729	249.32	249.32
August	31	7571	244.23	246.77
September	30	7307	243.57	245.73
October	31	7497	241.84	244.75
November	30	7102	236.73	243.18
December	31	7186	231.81	241.26
January	31	7248	233.81	240.19
February	28	0	0.00	0.00
March	31	0	0.00	0.00
April	30	0	0.00	0.00
May	31	0	0.00	0.00
June	30	0	0.00	0.00

Total Patient Days
51640

Average Daily Census
240.19

ARIZONA STATE HOSPITAL
 RESTORATION TO COMPETENCY
 CENSUS DATA
 FYE 6/30/2011

	July	August	Sept	Oct	Nov	Dec	Jan	Feb	Mar	April	May	June	Total
Total Census Days	447	350	355	467	374	295	248	0	0	0	0	0	2,536
Less: GEI	31	31	30	31	30	31	31	0	0	0	0	0	215
Less: Evaluation	0	0	0	0	0	0	0	0	0	0	0	0	0
Total RTC Days	416	319	325	436	344	264	217	0	0	0	0	0	2,321
Number of Days in Month	31	31	30	31	30	31	31	28	31	30	31	30	365
Average Daily Census	13.42	10.29	10.83	14.06	11.47	8.52	7.00	0.00	0.00	0.00	0.00	0.00	6.36
Total Days for Those D/C'd	466	301	241	175	516	647	0	0	0	0	0	0	2,346
Total RTC Patients D/C'd	4	2	2	1	4	5	0	0	0	0	0	0	18
Average Length of Stay RTC	116.50	150.50	120.50	175.00	129.00	129.40	#DIV/0!	#DIV/0!	#DIV/0!	#DIV/0!	#DIV/0!	#DIV/0!	130.33
Number of RTC Admissions	1	1	5	2	0	2	0	0	0	0	0	0	11

ARIZONA STATE HOSPITAL
 RESTORATION TO COMPETENCY
 CENSUS DATA

By County/City	July	August	Sept	Oct	Nov	Dec	Jan	Feb	Mar	April	May	June	Total
Maricopa													
RTC Census	0	0	0	0	0	0	0	0	0	0	0	0	0
Average Daily Census	0.00	0.00	0.00	0.00	0.00	0.00	0.00	0.00	0.00	0.00	0.00	0.00	0.00
LOS for RTC D/C'd	0	0	0	0	0	0	0	0	0	0	0	0	0
# of RTC D/C'd	0	0	0	0	0	0	0	0	0	0	0	0	0
D/C'd Average LOS	0.00	0.00	0.00	0.00	0.00	0.00	0.00	0.00	0.00	0.00	0.00	0.00	#DIV/0!
Number of Admissions	0	0	0	0	0	0	0	0	0	0	0	0	0
Gila													
RTC Census	43	58	77	87	60	20	0	0	0	0	0	0	345
Average Daily Census	1.39	1.87	2.57	2.81	2.00	0.65	0.00	0.00	0.00	0.00	0.00	0.00	0.95
LOS for RTC D/C'd	84	0	0	175	0	216	0	0	0	0	0	0	475
# of RTC D/C'd	1	0	0	1	0	2	0	0	0	0	0	0	4
D/C'd Average LOS	84.00	0.00	0.00	175.00	0.00	108.00	0.00	0.00	0.00	0.00	0.00	0.00	118.75
Number of Admissions	0	1	1	0	0	0	0	0	0	0	0	0	2
Pinal													
RTC Census	100	63	67	93	64	37	31	0	0	0	0	0	455
Average Daily Census	3.23	2.03	2.23	3.00	2.13	1.19	1.00	0.00	0.00	0.00	0.00	0.00	1.25
LOS for RTC D/C'd	170	125	0	0	42	161	0	0	0	0	0	0	498
# of RTC D/C'd	1	1	0	0	1	1	0	0	0	0	0	0	4
D/C'd Average LOS	170.00	125.00	0.00	0.00	42.00	161.00	0.00	0.00	0.00	0.00	0.00	0.00	124.50
Number of Admissions	1	0	1	0	0	0	0	0	0	0	0	0	2
Yuma													
RTC Census	90	62	70	163	165	176	155	0	0	0	0	0	881
Average Daily Census	2.90	2.00	2.33	5.26	5.50	5.68	5.00	0.00	0.00	0.00	0.00	0.00	2.41
LOS for RTC D/C'd	65	0	107	0	75	270	0	0	0	0	0	0	517
# of RTC D/C'd	1	0	1	0	1	2	0	0	0	0	0	0	5
D/C'd Average LOS	65.00	0.00	107.00	0.00	75.00	135.00	0.00	0.00	0.00	0.00	0.00	0.00	103.40
Number of Admissions	0	0	3	2	0	2	0	0	0	0	0	0	7

ARIZONA STATE HOSPITAL
 RESTORATION TO COMPETENCY
 CENSUS DATA

By County/City	July	August	Sept	Oct	Nov	Dec	Jan	Feb	Mar	April	May	June	Total
Coconino													
RTC Census	31	12	0	0	0	0	0	0	0	0	0	0	43
Average Daily Census	1.00	0.39	0.00	0.00	0.00	0.00	0.00	0.00	0.00	0.00	0.00	0.00	0.12
LOS for RTC D/C'd	0	176	0	0	0	0	0	0	0	0	0	0	176
# of RTC D/C'd	0	1	0	0	0	0	0	0	0	0	0	0	1
D/C'd Average LOS	0.00	176.00	0.00	0.00	0.00	0.00	0.00	0.00	0.00	0.00	0.00	0.00	176.00
Number of Admissions	0	0	0	0	0	0	0	0	0	0	0	0	0
Santa Cruz													
RTC Census	31	31	30	31	30	31	31	0	0	0	0	0	215
Average Daily Census	1.00	1.00	1.00	1.00	1.00	1.00	1.00	0.00	0.00	0.00	0.00	0.00	0.59
LOS for RTC D/C'd	0	0	0	0	0	0	0	0	0	0	0	0	0
# of RTC D/C'd	0	0	0	0	0	0	0	0	0	0	0	0	0
D/C'd Average LOS	0.00	0.00	0.00	0.00	0.00	0.00	0.00	0.00	0.00	0.00	0.00	0.00	#DIV/0!
Number of Admissions	0	0	0	0	0	0	0	0	0	0	0	0	0
Yavapai													
RTC Census	0	0	0	0	0	0	0	0	0	0	0	0	0
Average Daily Census	0.00	0.00	0.00	0.00	0.00	0.00	0.00	0.00	0.00	0.00	0.00	0.00	0.00
LOS for RTC D/C'd	0	0	0	0	0	0	0	0	0	0	0	0	0
# of RTC D/C'd	0	0	0	0	0	0	0	0	0	0	0	0	0
D/C'd Average LOS	0.00	0.00	0.00	0.00	0.00	0.00	0.00	0.00	0.00	0.00	0.00	0.00	#DIV/0!
Number of Admissions	0	0	0	0	0	0	0	0	0	0	0	0	0
LaPaz													
RTC Census	0	0	0	0	0	0	0	0	0	0	0	0	0
Average Daily Census	0.00	0.00	0.00	0.00	0.00	0.00	0.00	0.00	0.00	0.00	0.00	0.00	0.00
LOS for RTC D/C'd	0	0	0	0	0	0	0	0	0	0	0	0	0
# of RTC D/C'd	0	0	0	0	0	0	0	0	0	0	0	0	0
D/C'd Average LOS	0.00	0.00	0.00	0.00	0.00	0.00	0.00	0.00	0.00	0.00	0.00	0.00	#DIV/0!
Number of Admissions	0	0	0	0	0	0	0	0	0	0	0	0	0

ARIZONA STATE HOSPITAL
 RESTORATION TO COMPETENCY
 CENSUS DATA

By County/City	July	August	Sept	Oct	Nov	Dec	Jan	Feb	Mar	April	May	June	Total
Navajo													
RTC Census	59	31	21	0	0	0	0	0	0	0	0	0	111
Average Daily Census	1.90	1.00	0.70	0.00	0.00	0.00	0.00	0.00	0.00	0.00	0.00	0.00	0.30
LOS for RTC D/C'd	147	0	134	0	0	0	0	0	0	0	0	0	281
# of RTC D/C'd	1	0	1	0	0	0	0	0	0	0	0	0	2
D/C'd Average LOS	147.00	0.00	134.00	0.00	0.00	0.00	0.00	0.00	0.00	0.00	0.00	0.00	140.50
Number of Admissions	0	0	0	0	0	0	0	0	0	0	0	0	0
Mohave													
RTC Census	31	31	30	31	9	0	0	0	0	0	0	0	132
Average Daily Census	1.00	1.00	1.00	1.00	0.30	0.00	0.00	0.00	0.00	0.00	0.00	0.00	0.36
LOS for RTC D/C'd	0	0	0	0	181	0	0	0	0	0	0	0	181
# of RTC D/C'd	0	0	0	0	1	0	0	0	0	0	0	0	1
D/C'd Average LOS	0.00	0.00	0.00	0.00	181.00	0.00	0.00	0.00	0.00	0.00	0.00	0.00	181.00
Number of Admissions	0	0	0	0	0	0	0	0	0	0	0	0	0
Greenlee													
RTC Census	0	0	0	0	0	0	0	0	0	0	0	0	0
Average Daily Census	0.00	0.00	0.00	0.00	0.00	0.00	0.00	0.00	0.00	0.00	0.00	0.00	0.00
LOS for RTC D/C'd	0	0	0	0	0	0	0	0	0	0	0	0	0
# of RTC D/C'd	0	0	0	0	0	0	0	0	0	0	0	0	0
D/C'd Average LOS	0.00	0.00	0.00	0.00	0.00	0.00	0.00	0.00	0.00	0.00	0.00	0.00	0.00
Number of Admissions	0	0	0	0	0	0	0	0	0	0	0	0	0
Cochise													
RTC Census	0	0	0	0	0	0	0	0	0	0	0	0	0
Average Daily Census	0.00	0.00	0.00	0.00	0.00	0.00	0.00	0.00	0.00	0.00	0.00	0.00	0.00
LOS for RTC D/C'd	0	0	0	0	0	0	0	0	0	0	0	0	0
# of RTC D/C'd	0	0	0	0	0	0	0	0	0	0	0	0	0
D/C'd Average LOS	0.00	0.00	0.00	0.00	0.00	0.00	0.00	0.00	0.00	0.00	0.00	0.00	#DIV/0!
Number of Admissions	0	0	0	0	0	0	0	0	0	0	0	0	0

ARIZONA STATE HOSPITAL
 RESTORATION TO COMPETENCY
 CENSUS DATA

By County/City	July	August	Sept	Oct	Nov	Dec	Jan	Feb	Mar	April	May	June	Total
Apache													
RTC Census	0	0	0	0	0	0	0	0	0	0	0	0	0
Average Daily Census	0.00	0.00	0.00	0.00	0.00	0.00	0.00	0.00	0.00	0.00	0.00	0.00	0.00
LOS for RTC D/C'd	0	0	0	0	0	0	0	0	0	0	0	0	0
# of RTC D/C'd	0	0	0	0	0	0	0	0	0	0	0	0	0
D/C'd Average LOS	0.00	0.00	0.00	0.00	0.00	0.00	0.00	0.00	0.00	0.00	0.00	0.00	#DIV/0!
Number of Admissions	0	0	0	0	0	0	0	0	0	0	0	0	0
Pima													
RTC Census	31	31	30	31	16	0	0	0	0	0	0	0	139
Average Daily Census	1.00	1.00	1.00	1.00	0.53	0.00	0.00	0.00	0.00	0.00	0.00	0.00	0.38
LOS for RTC D/C'd	0	0	0	0	218	0	0	0	0	0	0	0	218
# of RTC D/C'd	0	0	0	0	1	0	0	0	0	0	0	0	1
D/C'd Average LOS	0.00	0.00	0.00	0.00	218.00	0.00	0.00	0.00	0.00	0.00	0.00	0.00	218.00
Number of Admissions	0	0	0	0	0	0	0	0	0	0	0	0	0
Graham													
RTC Census	0	0	0	0	0	0	0	0	0	0	0	0	0
Average Daily Census	0.00	0.00	0.00	0.00	0.00	0.00	0.00	0.00	0.00	0.00	0.00	0.00	0.00
LOS for RTC D/C'd	0	0	0	0	0	0	0	0	0	0	0	0	0
# of RTC D/C'd	0	0	0	0	0	0	0	0	0	0	0	0	0
D/C'd Average LOS	0.00	0.00	0.00	0.00	0.00	0.00	0.00	0.00	0.00	0.00	0.00	0.00	#DIV/0!
Number of Admissions	0	0	0	0	0	0	0	0	0	0	0	0	0
Phoenix													
RTC Census	0	0	0	0	0	0	0	0	0	0	0	0	0
Average Daily Census	0.00	0.00	0.00	0.00	0.00	0.00	0.00	0.00	0.00	0.00	0.00	0.00	0.00
LOS for RTC D/C'd	0	0	0	0	0	0	0	0	0	0	0	0	0
# of RTC D/C'd	0	0	0	0	0	0	0	0	0	0.0	0	0	0
D/C'd Average LOS	0.00	0.00	0.00	0.00	0.00	0.00	0.00	0.00	0.00	0.00	0.00	0.00	0.00
Number of Admissions	0	0	0	0	0	0	0	0	0	0	0	0	0

ARIZONA STATE HOSPITAL
 RESTORATION TO COMPETENCY
 CENSUS DATA

By County/City	July	August	Sept	Oct	Nov	Dec	Jan	Feb	Mar	April	May	June	Total
Tucson													
RTC Census	0	0	0	0	0	0	0	0	0	0	0	0	0
Average Daily Census	0.00	0.00	0.00	0.00	0.00	0.00	0.00	0.00	0.00	0.00	0.00	0.00	0.00
LOS for RTC D/C'd	0	0	0	0	0	0	0	0	0	0	0	0	0
# of RTC D/C'd	0	0	0	0	0	0	0	0	0	0	0	0	0
D/C'd Average LOS	0.00	0.00	0.00	0.00	0.00	0.00	0.00	0.00	0.00	0.00	0.00	0.00	0.00
Number of Admissions	0	0	0	0	0	0	0	0	0	0	0	0	0
Chandler													
RTC Census	0	0	0	0	0	0	0	0	0	0	0	0	0
Average Daily Census	0.00	0.00	0.00	0.00	0.00	0.00	0.00	0.00	0.00	0.00	0.00	0.00	0.00
LOS for RTC D/C'd	0	0	0	0	0	0	0	0	0	0	0	0	0
# of RTC D/C'd	0	0	0	0	0	0	0	0	0	0	0	0	0
D/C'd Average LOS	0.00	0.00	0.00	0.00	0.00	0.00	0.00	0.00	0.00	0.00	0.00	0.00	#DIV/0!
Number of Admissions	0	0	0	0	0	0	0	0	0	0	0	0	0
Goodyear													
RTC Census	0	0	0	0	0	0	0	0	0	0	0	0	0
Average Daily Census	0.00	0.00	0.00	0.00	0.00	0.00	0.00	0.00	0.00	0.00	0.00	0.00	0.00
LOS for RTC D/C'd	0	0	0	0	0	0	0	0	0	0	0	0	0
# of RTC D/C'd	0	0	0	0	0	0	0	0	0	0	0	0	0
D/C'd Average LOS	0.00	0.00	0.00	0.00	0.00	0.00	0.00	0.00	0.00	0.00	0.00	0.00	#DIV/0!
Number of Admissions	0	0	0	0	0	0	0	0	0	0	0	0	0
Totals check													
RTC Census	416	319	325	436	344	264	217	0	0	0	0	0	2,321
Average Daily Census	13.42	10.29	10.83	14.06	11.47	8.52	7.00	0.00	0.00	0.00	0.00	0.00	6.36
LOS for RTC D/C'd	466	301	241	175	516	647	0	0	0	0	0	0	2,346
# of RTC D/C'd	4	2	2	1	4	5	0	0	0	0	0	0	18
D/C'd Average LOS	116.50	150.50	120.50	175.00	129.00	129.40	#DIV/0!	#DIV/0!	#DIV/0!	#DIV/0!	#DIV/0!	#DIV/0!	130.33
Number of Admissions	1	1	5	2	0	2	0	0	0	0	0	0	11

BEHAVIORAL HEALTH SERVICES

- **FY 2011 DESIGNATED SPECIAL LINE ITEM FINANCIAL STATUS**
 - January 2011 included

- **FY 2011 EXPENDITURE COMPARISON REPORT BY PROGRAM AND RBHA**
 - January 2011 included

ARIZONA DEPARTMENT OF HEALTH SERVICES

DIVISION OF BEHAVIORAL HEALTH SERVICES

EXPENDITURE COMPARISON REPORT

For State Fiscal Year Ending: 30-June-2011

Through: January 31, 2011

Current Year 2011

Approp Number	Fund	Title	Original Appropriation	Total Appropriation Transfers or Revisions	Adjusted Appropriation Amount	Monthly Expenditures	YTD Expenditures	Projected Total Expenditures	N O T E S	Projected Surplus or Deficit
62003	1000	Children's Title XIX State Match	141,428,653	(42,371,327)	99,057,326	29,169,945	87,509,836	78,891,972		20,165,354
	1344	Children's Title XIX State Match	0	24,748,872	24,748,872	-	7,709,767	24,748,872		-
62004	1000	Children's Prop 204 State Match	2,758,585	(652,230)	2,106,355	689,646	1,716,526	1,984,447		121,908
63004	1000	SMI Prop 204 State Match	63,914,157	(15,111,612)	48,802,545	15,978,539	39,770,513	80,535,559		(31,733,014)
63010	1000	SMI Title XIX State Match	51,073,914	(6,363,970)	44,709,944	12,768,479	38,305,437	62,099,402		(17,389,458)
67310	1000	Non-Title XIX Prescription Medication	28,453,800	10,050,781	38,504,581	3,346,200	21,104,191	38,504,581		-
	1344	Non-Title XIX Prescription Medication	11,701,100	(10,050,781)	1,650,319	-	1,650,319	1,650,319		-
67320	1000	Supported Housing	0	4,092,266	4,092,266	410,844	1,698,382	4,092,266		-
	1344	Supported Housing	5,324,800	(4,092,266)	1,232,534	-	1,232,534	1,232,534		-
67300	1000	Crisis Services	0	10,605,825	10,605,825	1,178,425	4,713,700	10,605,825		-
	1344	Crisis Services	14,141,100	(10,605,825)	3,535,275	-	3,535,275	3,535,275		-
	2227	Crisis Services	1,350,000	-	1,350,000	112,500	787,500	1,350,000		-
	2319	Crisis Services	900,000	-	900,000	75,000	525,000	900,000		-
64004	1000	MH/SA Prop 204 State Match	45,134,236	(10,671,361)	34,462,875	11,283,559	28,084,728	43,667,498		(9,204,623)
66000	1000	MH/SA Title XIX State Match	32,784,765	(4,085,085)	28,699,680	8,196,191	24,588,574	28,137,495		562,185
	1344	MH/SA Title XIX State Match	3,600,000	-	3,600,000	-	1,800,000	3,600,000		-

ARIZONA DEPARTMENT OF HEALTH SERVICES
DIVISION OF BEHAVIORAL HEALTH SERVICES
EXPENDITURE COMPARISON REPORT BY PROGRAM AND RBHA
January, 2011

The enrollment data of January is still pending. The Enrollment, Demographic, Encounter, and DHS/DBHS's AHCCCS data systems have been redesigned and are currently being implemented in DHS/DBHS and in the T/RBHAs. During this transition we do not currently have up to date data for Enrollment and Penetration in January. The February "Enrollment-Penetration" report should detail October, November, December and January's data in addition to the February data.

COMMUNITY AND FAMILY HEALTH SERVICES

- **CHILDREN'S REHABILITATION SERVICES SPECIAL LINE ITEMS FINANCIAL STATUS**
 - January 2011 included
- **CHILDREN'S REHABILITATION SERVICES - MEMBERS BY FINANCIAL CATEGORY**
 - January 2011 included
- **CHILDREN'S REHABILITATIVE SERVICES - TITLE XIX MEMBER MONTHS REPORT**
 - January 2011 included

ARIZONA DEPARTMENT OF HEALTH SERVICES
DIVISION OF BEHAVIORAL HEALTH SERVICES
CRS EXPENDITURE COMPARISON REPORT
For State Fiscal Year Ending: 30-June-2010
FOR PERIOD: 01/01/2011 - 01/31/2011

Prior Fiscal Year 2010

Approp Number	Fund	Title	Original Appropriation	Appropriation Transfers or Revisions	Adjusted Appropriation Amount	Monthly Expenditures (MA)	YTD Expenditures (MC)	Projected Total Expenditures	NOTES	Projected Surplus or Deficit
42020		Children's Rehabilitation Services	3,587,000	(3,587,000)	0	-	-	-		-
42030		AHCCCS - CRS State Match	25,576,900	(3,006,678)	22,570,222	-	22,570,222	22,570,222	*1	-
42010		Adult Cystic Fibrosis	105,200	-	105,200	-	105,200	105,200		-
42020		Adult Sickle Cell	33,000	(33,000)	0	-	-	-		-
96022		AHCCCS - CRS Spending Authority	74,677,100	15,534,619	90,211,719	-	90,209,614	90,209,614	*2	2,104

Notes:

*1 FY 2010 CRS-TXIX State Match transferred to AHCCCS; state match expenditures reported in AHCCCS - CRS Total Funds.

*2 FY 2010 CRS-Title XIX Total Funds is comprised of federal expenditure authority of \$59,455,819 and state match of \$30,755,900.

42020 line no dollar \$ should be listed as there will be no payment made to CRS for State Only

ARIZONA DEPARTMENT OF HEALTH SERVICES
DIVISION OF BEHAVIORAL HEALTH SERVICES
CRS EXPENDITURE COMPARISON REPORT
For State Fiscal Year Ending: 30-June-2011
FOR PERIOD: 01/01/2011- 01/31/2011

Current Fiscal Year 2011

Approp Number	Fund	Title	Original Appropriation	Appropriation Transfers or Revisions	Adjusted Appropriation Amount	Monthly Expenditures (MA)	YTD Expenditures (MC)	Projected Total Expenditures	N O T E S	Projected Surplus or Deficit
42030	AHCCCS - CRS State Match		24,973,439	(3,111,769)	21,861,670	9,374,950	21,861,670	29,775,034	*1	(7,913,364)
42010	Adult Cystic Fibrosis		105,200	-	105,200	-	52,600	105,200		-
96122	AHCCCS - CRS Spending Authority		86,106,400	2,835,167	88,941,567	9,016,448	60,705,644	114,559,575	*2	(25,618,008)

Notes:

*1 FY 2011 CRS-TXIX State Match transferred to AHCCCS; state match expenditures reported in AHCCCS - CRS Total Funds.

*2 FY 2011 CRS-Title XIX Total Funds is comprised of federal expenditure authority of \$67,079,897 and state match of \$21,861,670.

**Arizona Department of Health Services
Office for Children with Special Health Care Needs
CRS - Members by Financial Category**

Date Range 12 Month Period Ending	AHCCCS			Non-AHCCCS						CRS Members Total
	Categorical	Kids Care	Sub-Total	Non Categorical	Undocumented		CRS State Only		Sub-Total	
					0% Pay	100% Pay	0% Pay	100% Pay		
07/31/10	22,383	820	23,203	0	0	0	0	0	0	23,203
08/31/10	22,543	791	23,334	0	0	0	0	0	0	23,334
09/30/10	22,552	770	23,322	0	0	0	0	0	0	23,322
10/31/10	22,820	737	23,557	0	0	0	0	0	0	23,557
11/30/10	22,699	723	23,422	0	0	0	0	0	0	23,422
12/31/10	22,666	704	23,370	0	0	0	0	0	0	23,370
01/31/11	22,833	677	23,510	0	0	0	0	0	0	23,510
02/28/11			0	0	0	0	0	0	0	0
03/31/11			0	0	0	0	0	0	0	0
04/30/11			0	0	0	0	0	0	0	0
05/31/11			0	0	0	0	0	0	0	0
06/30/11			0	0	0	0	0	0	0	0

Note: Non-AHCCCS - 0% Pay are members below 200% of federal poverty level (FPL), 100% Pay are members above 200% FPL.
KidsCare numbers are from the CRS data system.
Information for CRS Report H973395 - as of: 02/28/2011

APIPA CRS T-XIX CAPITATION FY 2011

Member Months		July	Aug	Sep	Oct	Nov	Dec	Jan	Feb	Mar	Apr	May	June	Total YTD
APIPA	High													
	Monthly	1,146	1,190	1,208	1,222	1,241	1,256	1,272						8,535
	Retro Adj.	41	37	71	76	54	46	19						344
		1,187	1,227	1,279	1,298	1,295	1,302	1,292	-	-	-	-	-	8,880
	Medium													
	Monthly	11,280	11,440	11,439	11,503	11,556	11,490	11,566						80,273
	Retro Adj.	117	111	100	115	140	(277)	216						522
		11,397	11,551	11,539	11,618	11,696	11,213	11,782	-	-	-	-	-	80,795
	Low													
	Monthly	8,469	8,636	8,678	8,788	8,865	8,862	8,925						61,223
	Retro Adj.	50	100	74	152	117	10	125						629
		8,520	8,736	8,752	8,940	8,983	8,872	9,051	-	-	-	-	-	61,853
	High	1,187	1,227	1,279	1,298	1,295	1,302	1,292						8,880
	Medium	11,397	11,551	11,539	11,618	11,696	11,213	11,782						80,795
	Low	8,520	8,736	8,752	8,940	8,983	8,872	9,051						61,853
	Total	21,103	21,514	21,570	21,856	21,973	21,387	22,124						151,527