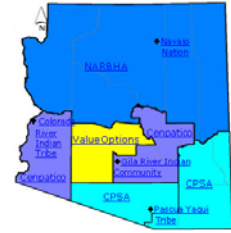




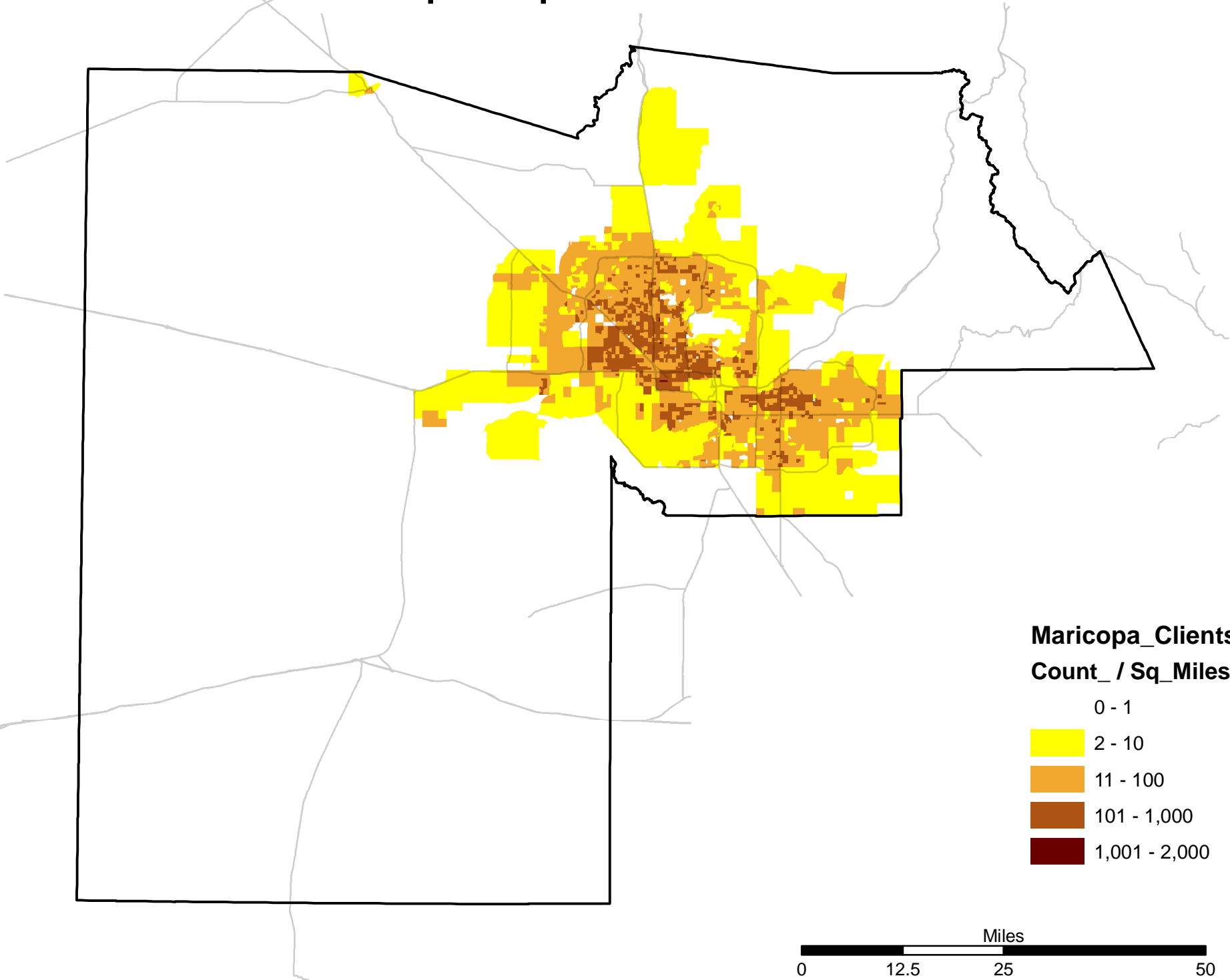
Maricopa Outpatient Providers 2006



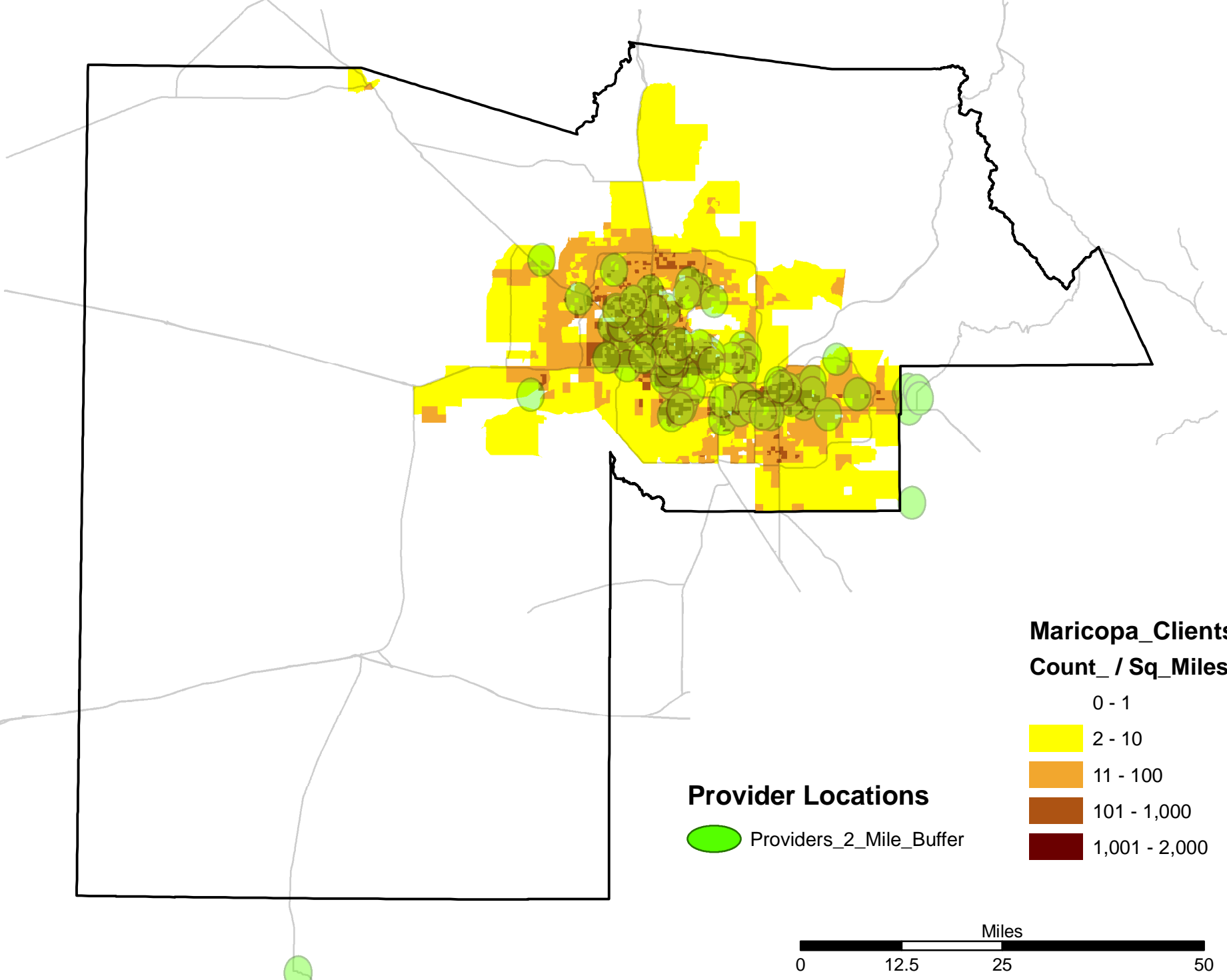
Between June 1, 2006 and August 31, 2006; 91,196 clients received outpatient services from 197 outpatient providers located in 227 locations in Arizona and one location in Oregon. Maricopa County had 107 of these providers in 120 locations. Maricopa County had 50,518 of these clients. We used CENTRIS geocoding software to locate these clinics and clients on an electronic Arizona map. All Maricopa County clinic locations were located to the street address and 89% (44,974) of the clients were located to the address level and 11% (5,544) were located to the zip code level. The 5,544 clients not located to the address level were removed from the analysis.

In Maricopa County, 69% (30,851) of the clients are within two miles of an outpatient provider; and 31% (14,123) are farther than two miles from an outpatient clinic.

Maricopa Outpatient Providers 2006

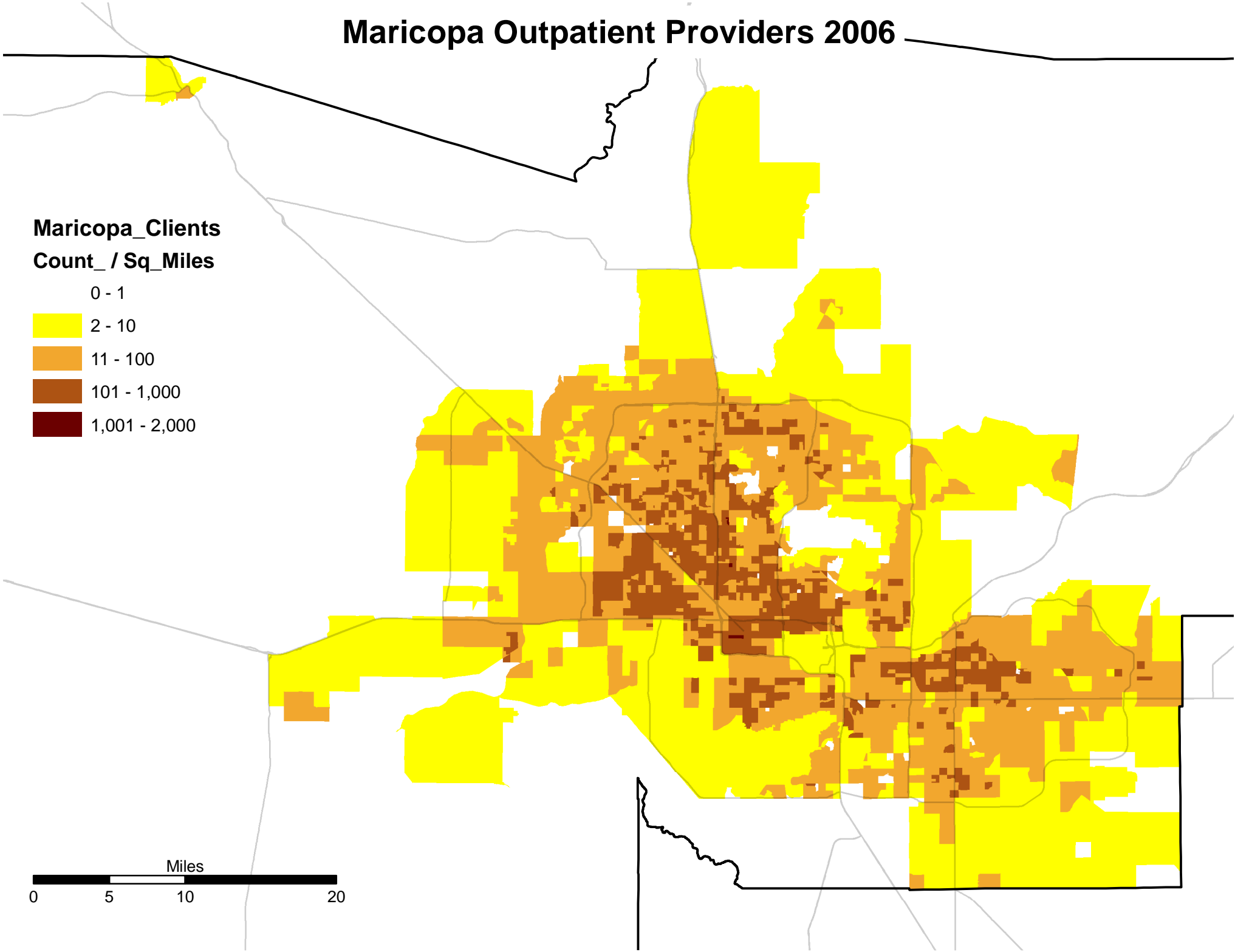
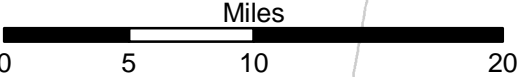
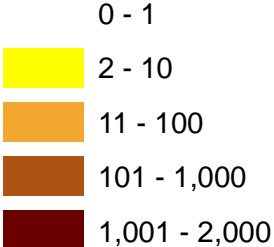


Maricopa Outpatient Providers 2006



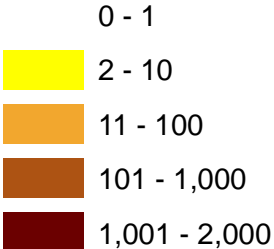
Maricopa Outpatient Providers 2006

Maricopa_Clients Count_ / Sq_Miles



Maricopa Outpatient Providers 2006

Maricopa_Clients Count_ / Sq_Miles



Provider Locations

