

Portable container/wagon

- Water/cups (1 gallon/person/day for 3 days minimum) for drinking and personal care

Food: 3 day supply of non-perishable food; eating utensils

- Ready-to-eat canned meats, fruits, vegetables
- Protein or fruit bars
- Dry cereal or granola
- Peanut butter
- Dried fruit
- Nuts
- Crackers
- Canned juice
- Powdered milk/formula/bottles
- Non-perishable pasteurized milk
- High-energy foods
- Foods for infants
- Foods for those allergic/special diets
- Comfort/stress foods (eg chocolate!)

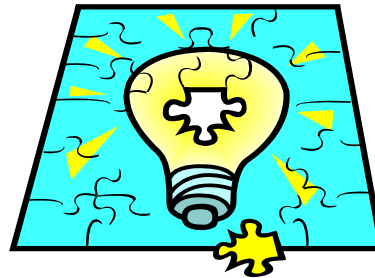
Materials

- Cups, utensils, knife, scissors, paper bowls/plates
- Can opener (manual or battery-operated) for food
- Medications (children and staff) including epi-pens, inhalers, diabetic supplies/permission forms
- First aid kit
- Additional first aid supplies (lockable container): extra sterile gloves, burn ointment, eye wash, antiseptic wipes, thermometer, tweezers, pain relievers (child and adult), laxatives, anti-diarrheal (child and adult), petroleum jelly, polysporin or bacitracin, Benedryl (child and adult), cold pack, ace bandages
- Dust masks (to fit children and adults)

- Moist towelettes/wipes/ paper towels
- Soap/hand sanitizer
- Toilet Paper
- Garbage bags/ties (for personal care)

Equipment

- Strollers/crib with heavy duty wheels for transporting infants
- Whistle (to signal for help)
- Reflective vests or hats
- Radio (battery or hand-crank)
- Flashlight/extra batteries/flares/light sticks/candles/matches or lighter
- Work gloves
- Wrench and/or pliers and instructions to turn off utilities; utility knife
- Water purifications tables/regular bleach/eye dropper/cheesecloth
- Plastic sheeting or large heavy duty plastic bags/duct tape/scissors (pre-cut for windows/doors) for shelter-in-place
- Adaptive equipment for children and staff with special needs



Arizona Department of Health Services

Bureau of Child Care Licensing
150 N 18th Ave, #400
Phoenix, AZ 85007

Phone: 602-364-2539
Fax: 602-364-4768

Website: www.azdhs.gov/licensing/childcare-facilities/index.php#emergency-preparedness-resources



Arizona Department of Health
Services

Bureau of Child Care Licensing

► Be Prepared

A Disaster Emergency Evacuation Preparedness Kit



Tel: 602-364-2539



Kit Components



An emergency disaster kit is not just a bigger first aid box. It must include the essential tools needed to provide continuous care for children enrolled in your program during an emergency or a disaster.

Emergency Kits

OVERVIEW

- One kit for Disaster/Evacuation
- One kit (in addition to

Disaster and Emergency Kit) for additional Shelter-in-place supplies with plastic sheeting, duct tape, scissors, tools to turn off utilities, work gloves, tarp/tent/ponchos)

- One backpack/room filled with age-appropriate activities – placed near room’s exit
- Covered totes with handles or wheels, large rolling garbage can, wagon for moving supplies
- Backpack for each child with extra clothes (long-sleeve shirt/pants), diapers, wipes, ointments, infant food, bottles/formula, etc.)
- Plan for 3 days worth of supplies

Grab 'N Go Disaster Bag

- Emergency Plan/checklists/organizational chart for staff and their responsibilities
- Emergency phone numbers/contacts/host facility and alternate location(s)
- Attendance rosters for each activity area
- Staff/volunteer/visitor attendance record
- Children’s Emergency Records cards/immunization records/custody papers/photo
- Permission to transport forms for each child
- Staff emergency contacts/immunization records/photo
- Allergies list for children/staff
- Individualized Plans for children with special needs
- Medication permission forms/lock box for medications
- Essential financial/continuity of business records for facility/thumb drives
- Local maps
- Cash (small bills)/coins/credit cards/calling card
- Cell phone and charger or 2-way communication (walkie-talkie)



Other Survival Supplies

- Survival blankets
- Blankets/sleeping bags

Vehicles:

- Full tank of gas, keys, maps
- First aid kit with instructions, water/cups, towels/blankets
- Flashlight, battery-operated/hand crank radio, fire extinguisher
- Emergency/immunization information for children and staff, permission to transport in an emergency
- Laptop computer, portable power supply/extra battery
- Flares, booster cables, tools, shovel, tire repair kit/pump
- Tarps/tents/poncho
- Weather radio (NOAA version with tone alert)
- High energy food

Pets:

- food/medications and why they are taken/immunization records/muzzle-collar-harness-leash/collapsible carrier/ID tag/current photo of pet and self/proof of ownership/physical description of pet/flea and tick treatment/food and water dishes/cotton sheet to cover carrier/toys/litter-pan-scoop/plastic bags (cleanup)