

Arizona Medical Marijuana Program November 2017 Monthly Report

In November 2010, Arizona voters passed the Arizona Medical Marijuana Act (AMMA), A.R.S. §36-2801 *et seq.* The AMMA went into effect on April 14, 2011, making Arizona the fourteenth state to adopt a medical marijuana law. The AMMA designates the Arizona Department of Health Services (ADHS) as the licensing and issuing authority for the Arizona Medical Marijuana Program.

The AMMA monthly report highlights the most current program statistics. This includes data on active medical marijuana cardholders as well as transaction data from the sale of medical marijuana at non-profit medical marijuana dispensaries. Tables 1 through 6 and Figures 1 through 3 reflect data that are point in time. Table 7 and Figure 4 are data from the month of November, 2017. The Year-To-Date section which follows shows cumulative applications and approvals for 2017. For further information and statistics, please reference the Arizona Medical Marijuana Annual Report.

Table 1. Arizona Medical Marijuana Active Qualifying Patients, Designated Caregivers and Dispensary Agents Profile

Active Cardholder's Profile	Totals	Percent Total
1. Qualifying patients (QPs)	151,512	96.45%
2. Caregivers (CGs)	942	0.60%
3. Dispensary Agents (DA)	4,628	2.95%
Total	157,082	100.00%

*Note: For caregivers and dispensary agents, these data reflect unique individuals, not the number of cards.

Table 2. Arizona Medical Marijuana Active Qualifying Patients Profile

Application profile of qualifying patients	Totals	Percent Total
1. New applications	99,389	65.60%
2. Renewal applications	45,638	30.12%
3. Changed demographics	2,827	1.87%
4. Added Caregivers	270	0.18%
5. Change Dup	3,363	2.22%
6. Replaced Caregivers	20	0.01%
7. Removed Caregivers	5	0.00%
Total	151,512	100.00%

Approximately 11 percent (n = 17,061) of the active cardholders were determined to be SNAP eligible. Of the 17,061 that were determined to be eligible, 8,300 (~49%) were females and 8,761 (~51%) were males.

Table 3. Arizona Medical Marijuana Active Qualifying Patients Characteristics

Characteristics of Active Cardholders who are Qualified Patients	Totals (N =151,512)	Percent Total
Patient Age-groups		
Less than 18 years	208	0.14
18 to 30 years	37,310	24.62
31 to 40 years	31,122	20.54
41 to 50 years	23,681	15.63
51 to 60 years	25,482	16.82
61 to 70 years	24,843	16.40
71 to 80 years	7,260	4.79
81 and older	1,606	1.06
Patient Gender		
Male	93,012	61.39
Female	58,500	38.61

**Figure 1. Arizona Medical Marijuana Active Qualifying Patients Characteristics by Gender and Age
(N = 151,512)**

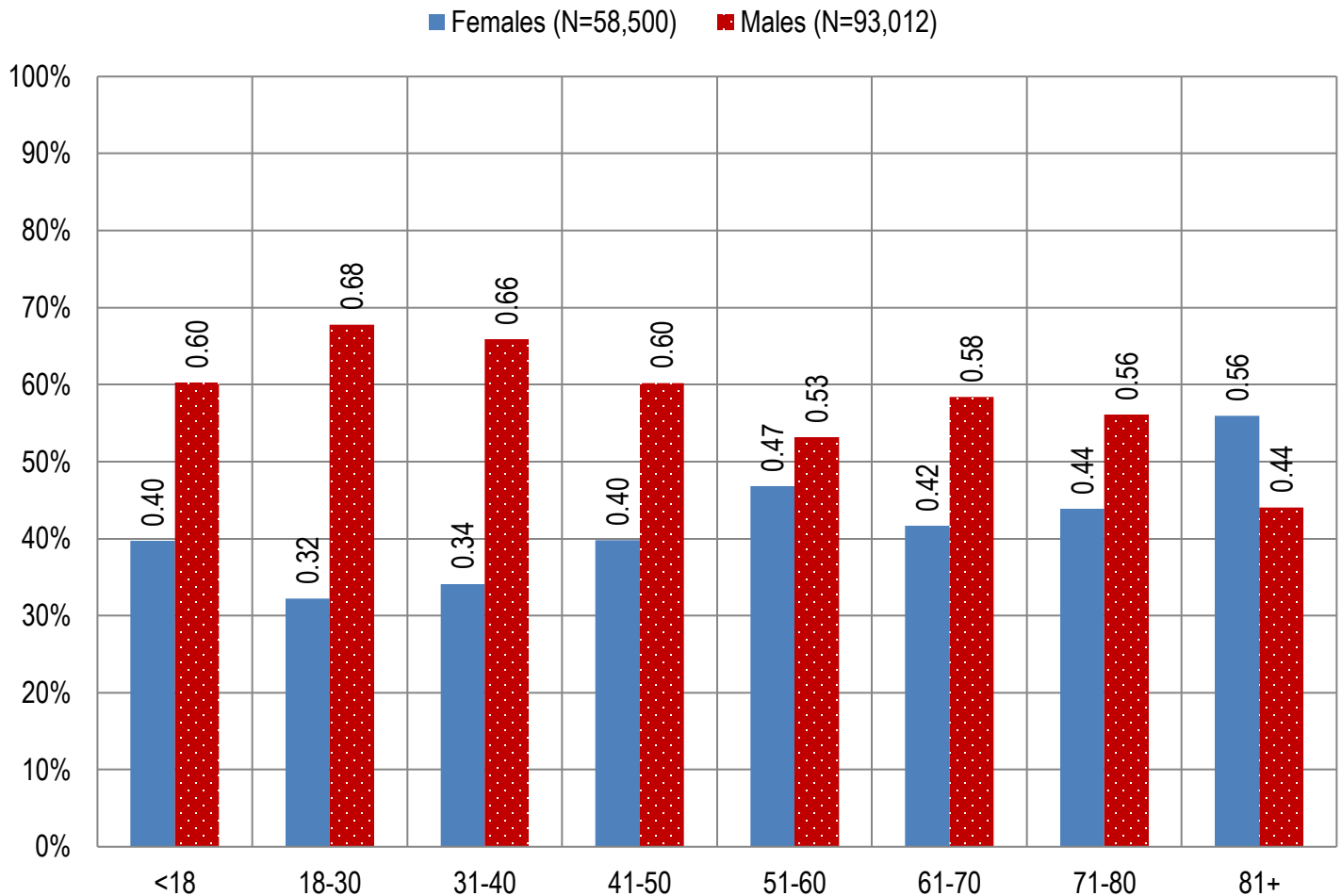


Table 4. Arizona Medical Marijuana Active Qualifying Patients Medical Condition Profile

Patient medical condition profile of Active Cardholders [¶]	Totals	Percent Total
Alzheimer's	63	0.04%
Cachexia	122	0.08%
Cancer	3,780	2.49%
Chronic Pain	128,572	84.86%
Crohn's Disease	524	0.35%
Glaucoma	1,007	0.66%
Hepatitis C	915	0.60%
HIV/AIDS	617	0.41%
Muscle Spasms	1,197	0.79%
Nausea	819	0.54%
Post-Traumatic Stress Disorder (PTSD)	2,037	1.34%
Sclerosis	45	0.03%
Seizures	1,163	0.77%
Two Or More Conditions	10,651	7.03%
TOTAL	151,512	100.00%

[¶]Unique debilitating conditions

Figure 2. Arizona Medical Marijuana Active Designated Caregiver Characteristics by Gender and Age (N = 942)

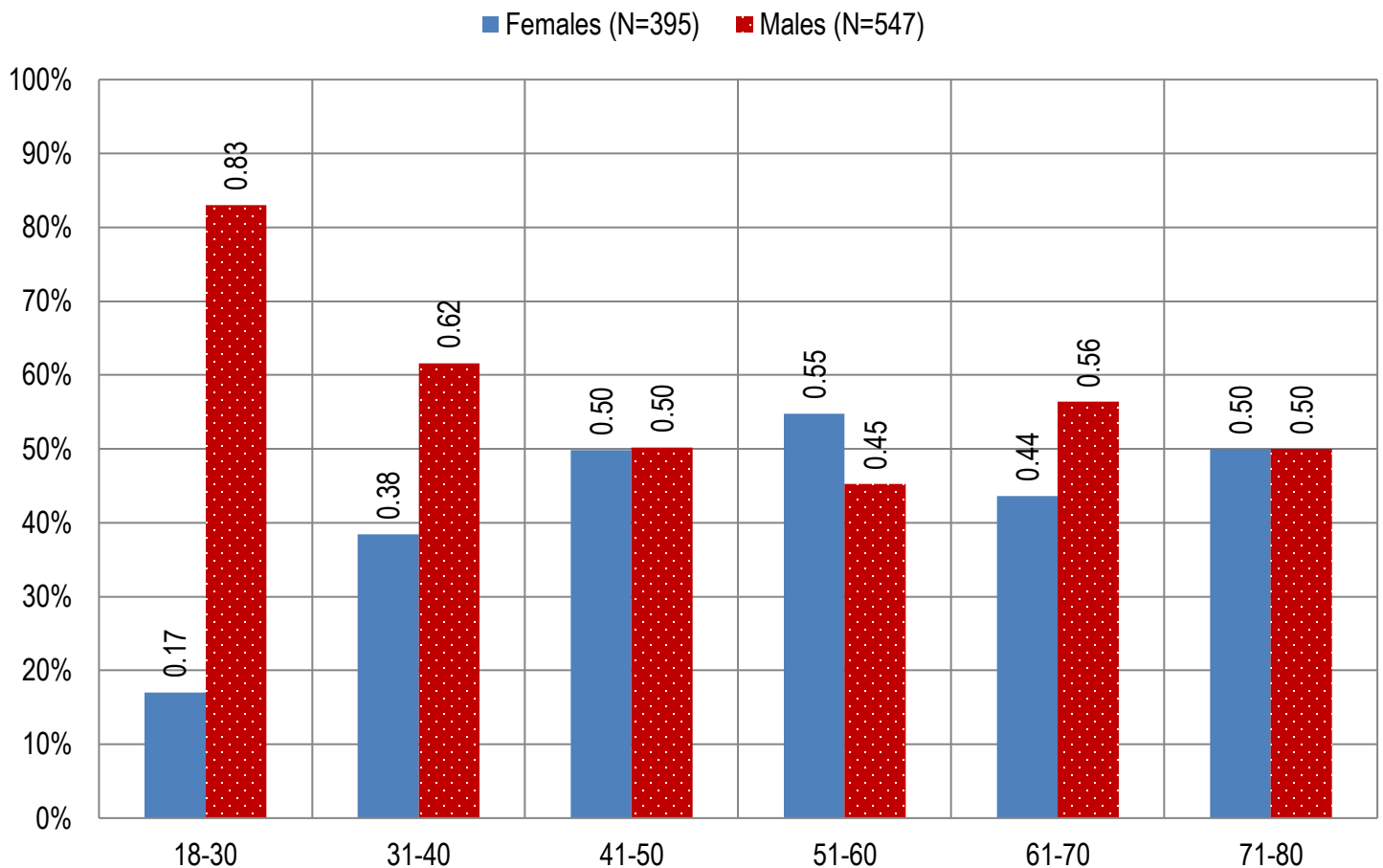


Table 5. Arizona Medical Marijuana Active Qualifying Patients and Designated Caregivers Authorized for Cultivation

Active cardholders cultivation status	Totals	Percent Total
Qualifying patients (n =151,512)	1,705	1.13%
Caregivers (n =942)	398	42.25%

Table 6. Frequency of Qualifying Patients, Caregivers, and Dispensary Agents by County of Residence

County	Qualifying Patients	Caregivers	Dispensary Agents*
Apache County	814	Count Under 20	Count Under 20
Cochise County	2,219	Count Under 20	124
Coconino County	3,332	37	114
Gila County	1,468	Count Under 20	39
Graham County	626	Count Under 20	Count Under 20
Greenlee County	158	Count Under 20	Count Under 20
La Paz County	386	Count Under 20	22
Maricopa County	96,099	556	2,758
Mohave County	5,151	Count Under 20	139
Navajo County	2,021	21	276
Pima County	21,040	122	472
Pinal County	8,349	45	164
Santa Cruz County	459	Count Under 20	91
Yavapai County	7,861	59	361
Yuma County	1,529	Count Under 20	Count Under 20
TOTAL	151,512	942	4,628

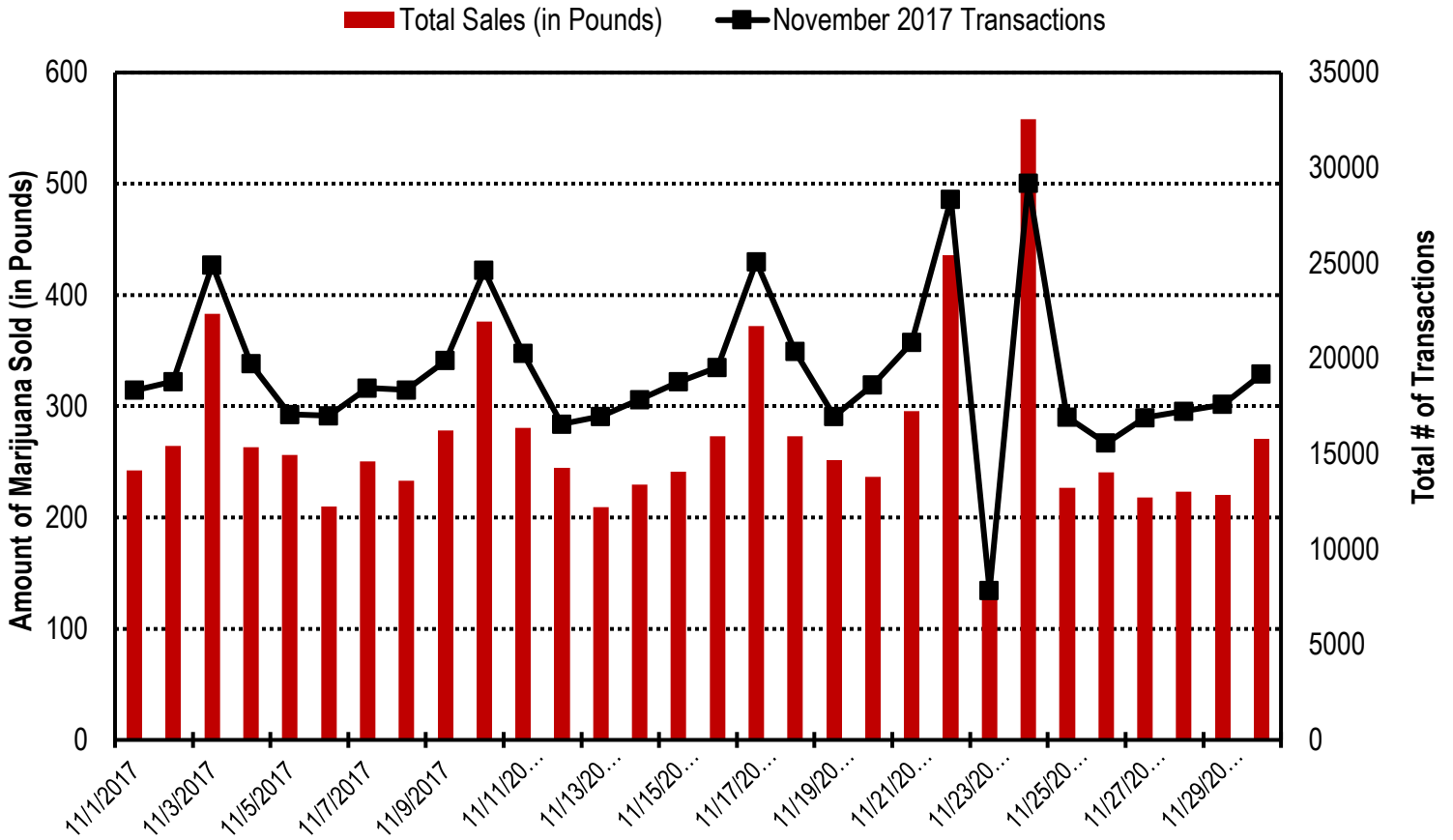
* 35 Dispensary Agents are located outside of Arizona.

Table 7. Type and Amount of Transactions at Medical Marijuana Dispensaries in November, 2017

Type of Transaction [†]	Ounces (oz.)	Pounds
Marijuana	120,634.80	7,539.68
Marijuana Edible	5,582.00	348.88
Marijuana Other	4,737.99	296.12
Total Marijuana Sold	130,954.79	8,184.67

[†]Amounts have been rounded and may not added to exact totals

Figure 4. Daily Transactions and Amount of Marijuana Sold in November, 2017



YEAR TO DATE

Table 1a. Arizona Medical Marijuana Applications Received- Application Profile

Applications Received Cardholder Profile	Totals	Percent Total
Qualifying patients (QPs)	151,602	94.42%
Caregivers (CGs)	2,014	1.25%
Dispensary Agents (DA)	6,943	4.32%
Total	160,559	100.00%

*Note: For caregivers and dispensary agents, these data reflect unique individuals, not the number of cards.

Table 1b. Arizona Medical Marijuana Licensed Qualifying Patients, Designated Caregivers and Dispensary Agents Profile

Applications Approved Cardholder Profile	Totals	Percent Total
Qualifying patients (QPs)	150,494	94.64%
Caregivers (CGs)	1,928	1.21%
Dispensary Agents (DA)	6,593	4.15%
Total	159,015	100.00%

*Note: For caregivers and dispensary agents, these data reflect unique individuals, not the number of cards.

Table 2. Arizona Medical Marijuana Licensed Qualifying Patient Profile

Applications Received for Qualifying Patients	Totals	Percent Total
New applications	95,407	63.40%
Renewal applications	46,160	30.67%
Changed demographics	3,674	2.44%
Added Caregivers	392	0.26%
Change Dup	4,811	3.20%
Replaced Caregivers	43	0.03%
Removed Caregivers	7	0.00%
Total	150,494	100.00%

Table 3a. Arizona Medical Marijuana Applications Received- Patient Characteristics

Characteristics of Applications Received who are Qualified Patients	Totals (N = 151,602)	Percent Total
Patient Age-groups		
Less than 18 years	219	0.14%
18 to 30 years	40,261	26.56%
31 to 40 years	31,050	20.48%
41 to 50 years	23,249	15.34%
51 to 60 years	25,391	16.75%
61 to 70 years	23,549	15.53%
71 to 80 years	6,494	4.28%
81 and older	1,389	0.92%
Patient Gender		
Male	93,355	61.58%
Female	58,247	38.42%

Table 3b. Arizona Medical Marijuana Licensed Qualifying Patient Characteristics

Characteristics of Approved Applications who are Qualified Patients	Totals (N = 150,494)	Percent Total
Patient Age-groups		
Less than 18 years	210	0.14%
18 to 30 years	39,987	26.57%
31 to 40 years	30,830	20.49%
41 to 50 years	23,080	15.34%
51 to 60 years	25,200	16.74%
61 to 70 years	23,388	15.54%
71 to 80 years	6,428	4.27%
81 and older	1,371	0.91%
Patient Gender		
Male	92,720	61.61%
Female	57,774	38.39%

Figure 1a. Arizona Medical Marijuana Applications Received- Patient Characteristics by Gender and Age (N =151,602)

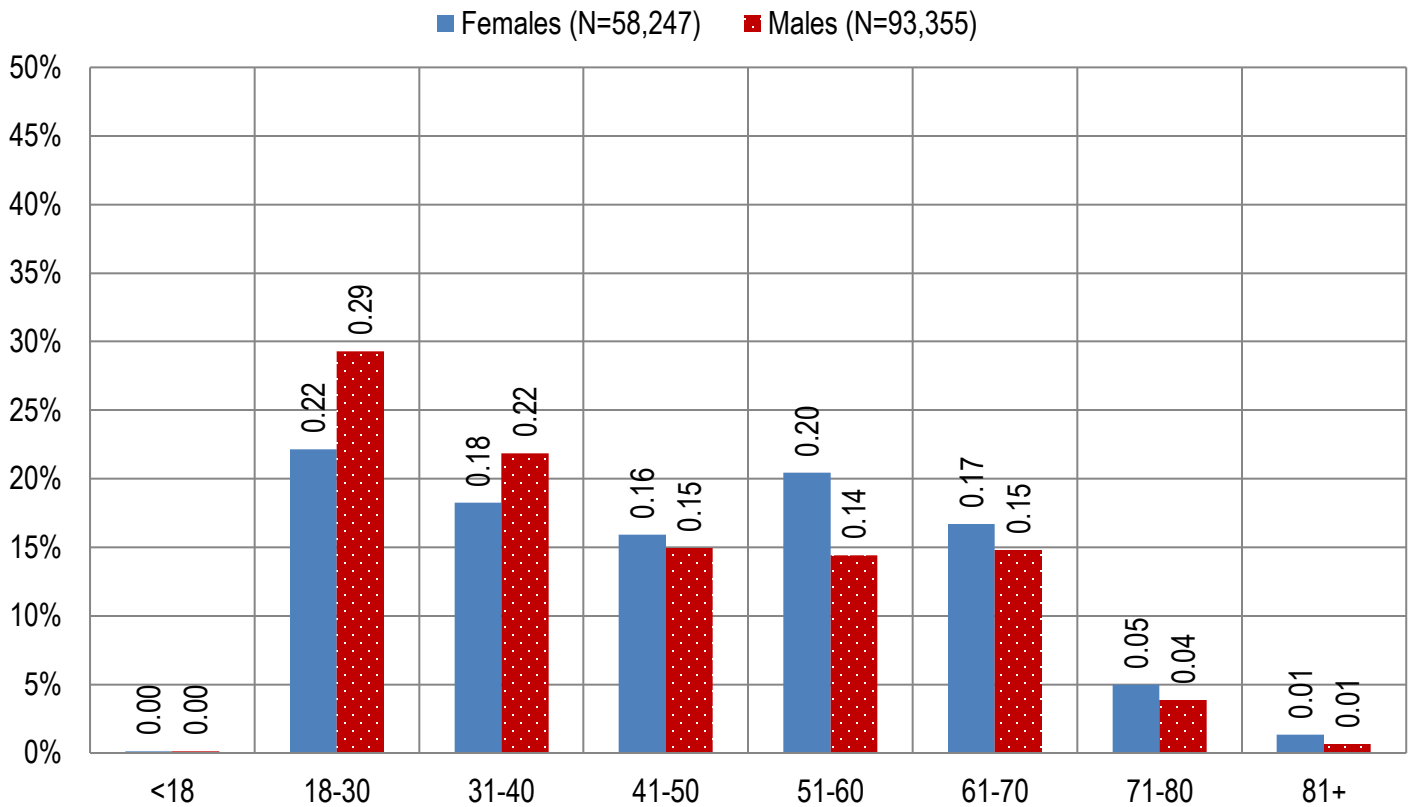


Figure 1b. Arizona Medical Marijuana Licensed Qualifying Patient Characteristics by Gender and Age (N =150,494)

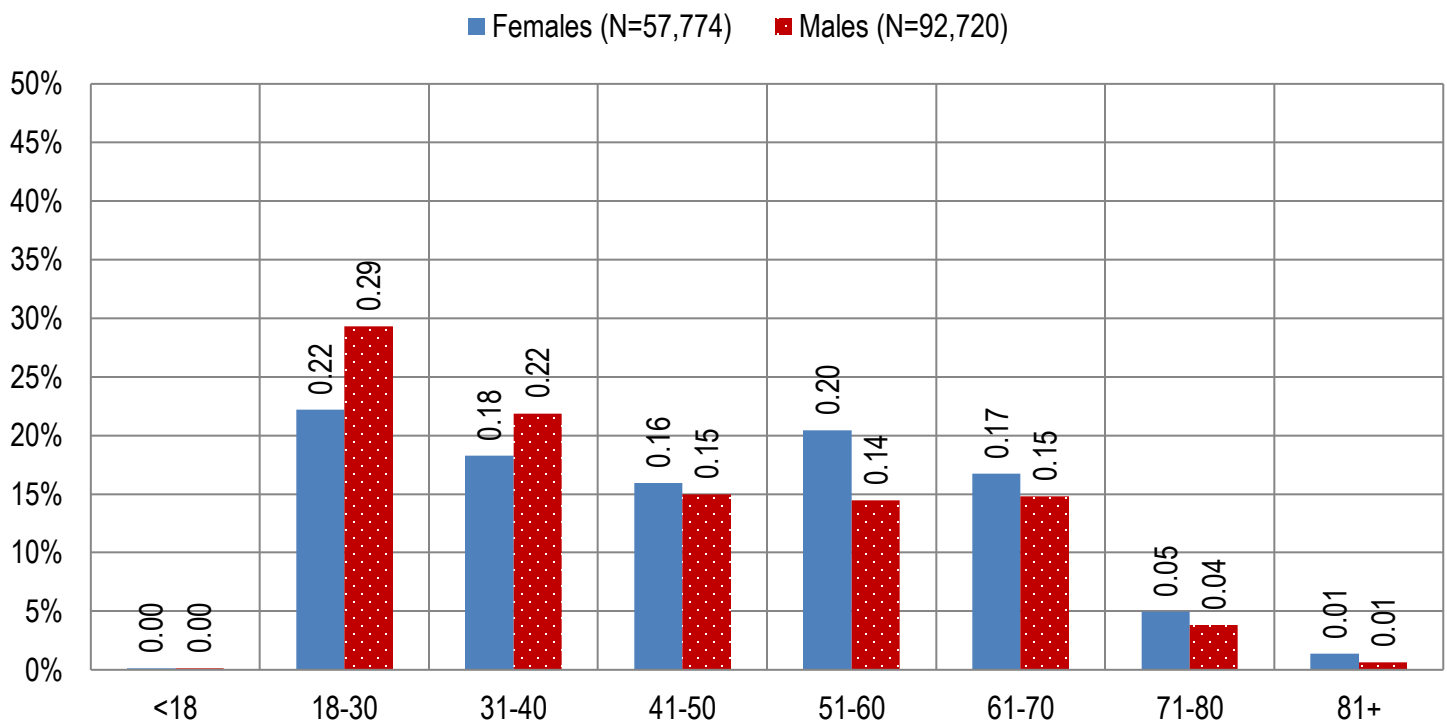


Figure 2a. Arizona Medical Marijuana Applications Received- Caregivers Characteristics by Gender and Age
(N = 2,014)

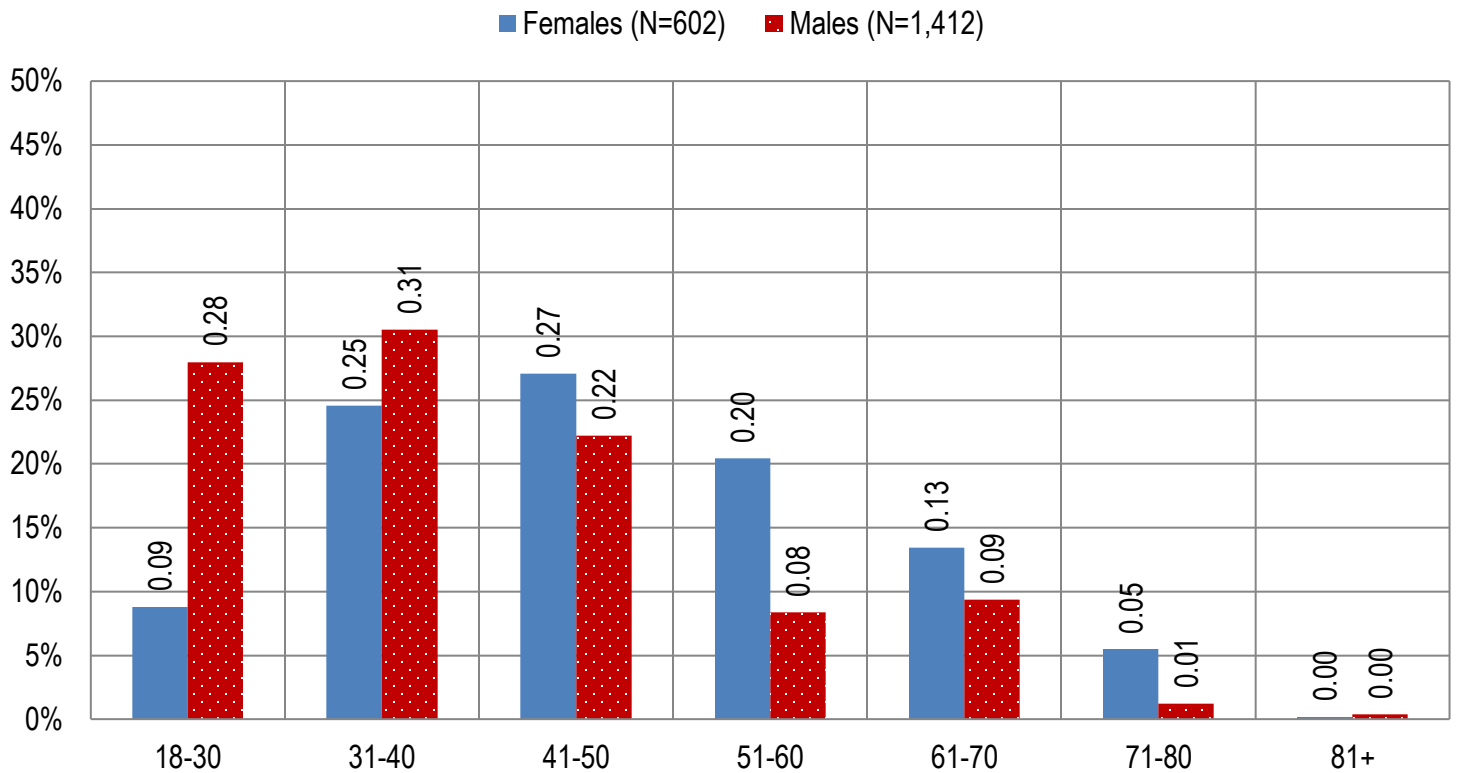


Figure 2b. Arizona Medical Marijuana Licensed Caregivers Characteristics by Gender and Age
(N = 1,928)

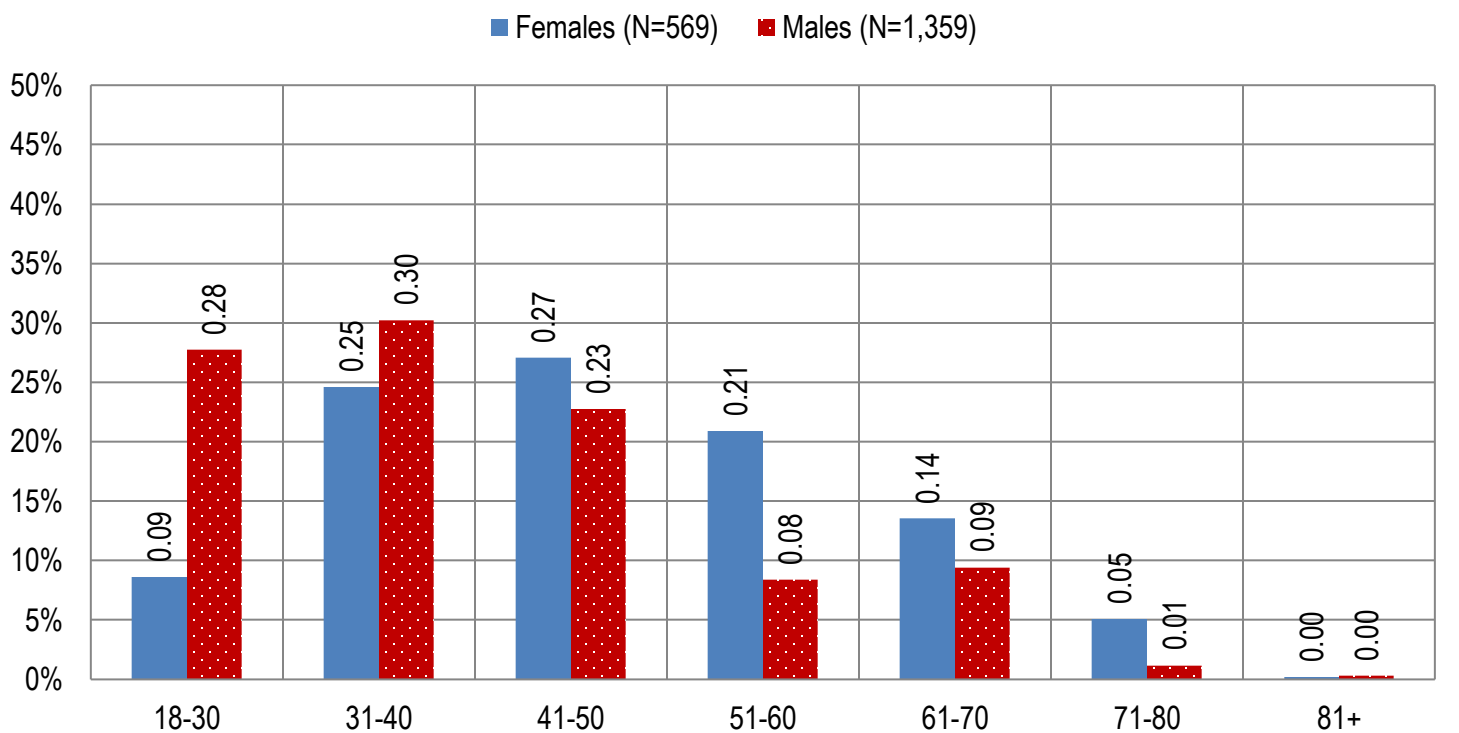


Table 4a. Arizona Medical Marijuana Applications Received- Patient Medical Conditions Profile

Patient medical condition profile of Applications Received [¶]	Totals	Percent Total
Alzheimer's	63	0.04%
Cachexia	117	0.08%
Cancer	3,626	2.39%
Chronic Pain	129,084	85.15%
Crohn's Disease	507	0.33%
Glaucoma	976	0.64%
Hepatitis C	933	0.62%
HIV/AIDS	605	0.40%
Muscle Spasms	1,189	0.78%
Nausea	802	0.53%
Post-Traumatic Stress Disorder (PTSD)	2,050	1.35%
Sclerosis	43	0.03%
Seizures	1,166	0.77%
Two Or More Conditions	10,441	6.89%
TOTAL	151,602	100.00%

[¶]Unique debilitating conditions

Table 4b. Arizona Medical Marijuana Licensed Qualifying Patients Medical Conditions Profile

Patient medical condition profile of Applications Approved [¶]	Totals	Percent Total
Alzheimer's	62	0.04%
Cachexia	114	0.08%
Cancer	3,597	2.39%
Chronic Pain	128,197	85.18%
Crohn's Disease	503	0.33%
Glaucoma	972	0.65%
Hepatitis C	930	0.62%
HIV/AIDS	596	0.40%
Muscle Spasms	1,179	0.78%
Nausea	798	0.53%
Post-Traumatic Stress Disorder (PTSD)	2,015	1.34%
Sclerosis	42	0.03%
Seizures	1,159	0.77%
Two Or More Conditions	10,330	6.86%
TOTAL	150,494	100.00%

[¶]Unique debilitating conditions

Table 5a. Arizona Medical Marijuana Applications Received for Applicants Seeking Authorization to Cultivate

Applications Received for cardholders with cultivation status	Totals	Percent total
Qualifying patients (n = 151,602)	1,864	1.23%
Caregivers (n = 2,014)	0	0.00%

Table 5b. Arizona Medical Marijuana Licensed Qualifying Patients and Designated Caregivers Authorized for Cultivation

Approved cardholders cultivation status	Totals	Percent total
Qualifying patients (n = 150,494)	1,864	1.24%
Caregivers (n = 1,607)	0	0.00%

Table 7a. Type and Amount of Transactions at Medical Marijuana Dispensaries in 2017 to Date

Type of Transaction [†]	Ounces (oz.)	Pounds
Marijuana	1,152,039.52	72,002.47
Marijuana Edible	53,310.79	3,331.92
Marijuana Other	39,668.82	2,479.30
Total Marijuana Sold	1,245,019.12	77,813.70

[†]Amounts have been rounded and may not added to exact totals

Figure 5. Transactions and Amount of Marijuana Sold in 2017 by Month

