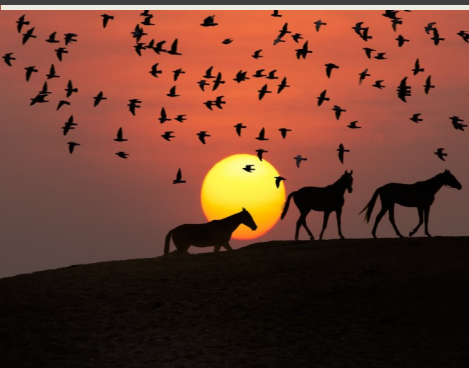


Arizona Cancer Registry Data

2003-2012



March 2016



Health and Wellness for all Arizonans

Doug Ducey, Governor
State of Arizona

Cara M. Christ, M.D., Director
Arizona Department of Health Services

MISSION

Health and Wellness for all Arizonans

PREPARED BY:

The Bureau of Public Health Statistics in partnership with the Bureau of Health Systems Development
Arizona Department of Health Services
150 N 18th Ave, Suite 300
Phoenix, AZ 85007

ACKNOWLEDGEMENTS:

Georgia Yee, Chris Newton, Virginia Warren, Emily Wozniak and Christy Zavala

This publication can be made available in alternative format. Please contact the Bureau of Public Health Statistics at (602) 542-7320 (voice) or call 1-800-367-8939 (TDD).

Permission to quote from or reproduce materials from this publication is granted when acknowledgment is made.

We acknowledge the Centers for Disease Control and Prevention (CDC) for its support under cooperative agreement 6NU58DP003858-04-02 and 5U58DP003858 awarded to the Arizona Cancer Registry, the Arizona Well Women HealthCheck Program, and the Arizona Cancer Control Program. Its contents are solely the responsibility of the authors and do not necessarily represent the official view of the Centers for Disease Control and Prevention.

Please note that Arizona Cancer Registry data changes frequently and may not be comparable to earlier reports as cases may have been added, removed or changed.



**Arizona
Cancer**
PREVENTION & CONTROL
More People Will Live Longer

Table of Contents

1

All Cause Cancer 1

| | |
|---|---|
| Figure 1: Age Adjusted Incidence Rates..... | 2 |
| Figure 2: Age Adjusted Mortality Rates..... | 2 |

2

Breast Cancer 3

| | |
|---|---|
| Figure 1: Age Adjusted Incidence Rates..... | 4 |
| Figure 2: Age Adjusted Mortality Rates..... | 4 |
| Figure 3: Stage at Diagnosis by Race/Ethnicity..... | 5 |
| Figure 4: Survival by Summary Stage..... | 6 |
| Figure 5: Case Count by Age/Diagnosis..... | 6 |
| Figure 6: Stage at Diagnosis by Age Group..... | 7 |

3

Cervical Cancer 8

| | |
|---|----|
| Figure 1: Age Adjusted Incidence Rates..... | 9 |
| Figure 2: Age Adjusted Mortality Rates..... | 9 |
| Figure 3: Stage at Diagnosis by Race/Ethnicity..... | 10 |
| Figure 4: Survival by Summary Stage..... | 11 |

4

Colorectal Cancer 12

| | |
|---|----|
| Figure 1: Age Adjusted Incidence Rates..... | 13 |
| Figure 2: Age Adjusted Mortality Rates..... | 13 |
| Figure 3: Stage at Diagnosis by Race/Ethnicity..... | 14 |
| Figure 4: Survival by Summary Stage..... | 15 |
| Figure 5: Case Count by Age/Diagnosis..... | 15 |
| Figure 6: Survival by Age Group..... | 16 |
| Figure 7: Survival by Race/Ethnicity..... | 17 |

Table of Contents

5

Prostate Cancer 18

Figure 1: Age Adjusted Incidence Rates.....19

Figure 2: Age Adjusted Mortality Rates.....19

Figure 3: Stage at Diagnosis by Race/Ethnicity.....20

Figure 4: Survival by Summary Stage.....21

6

Melanoma 22

Figure 1: Age Adjusted Incidence Rates.....23

Figure 2: Age Adjusted Mortality Rates.....23

Figure 3: Stage at Diagnosis by Race/Ethnicity.....24

Figure 4: Survival by Summary Stage.....25

7

Lung Cancer 26

Figure 1: Age Adjusted Incidence Rates.....27

Figure 2: Age Adjusted Mortality Rates.....27

Figure 3: Stage at Diagnosis by Race/Ethnicity.....28

Figure 4: Survival by Summary Stage.....29

8

Ovarian Cancer 30

Figure 1: Age Adjusted Incidence Rates.....31

Figure 2: Age Adjusted Mortality Rates.....31

Figure 3: Stage at Diagnosis by Race/Ethnicity.....32

Figure 4: Survival by Summary Stage.....33

Table of Contents

9

Pancreatic Cancer 34

Figure 1: Age Adjusted Incidence Rates.....35

Figure 2: Age Adjusted Mortality Rates.....35

Figure 3: Stage at Diagnosis by Race/Ethnicity.....36

Figure 4: Survival by Summary Stage.....37

10

Leukemia 38

Figure 1: Age Adjusted Incidence Rates.....39

Figure 2: Age Adjusted Mortality Rates.....39

Figure 3: Proportion by Age and Diagnosis.....40

Figure 4: Survival by Summary Stage.....40

11

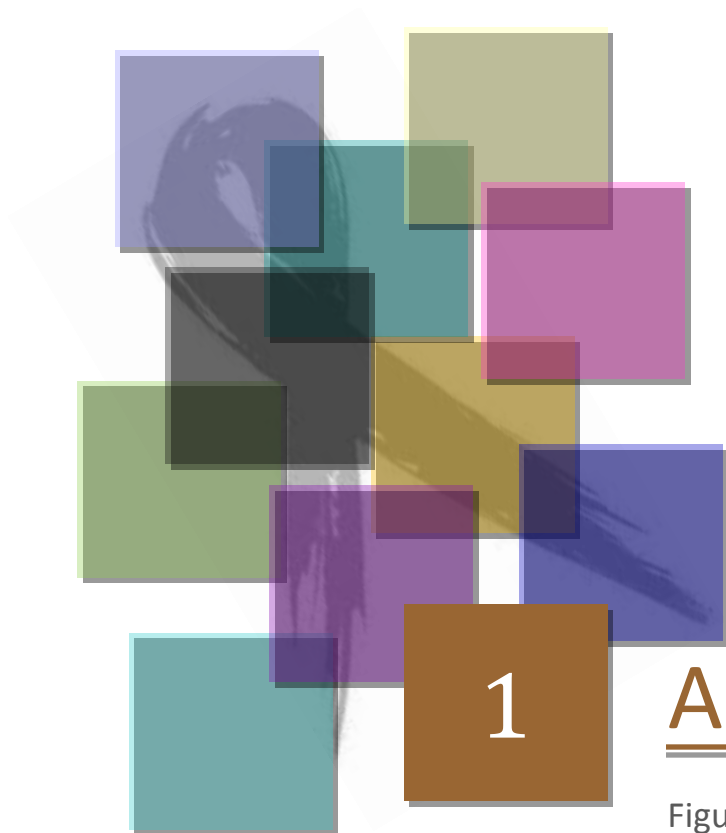
Lymphoma 41

Figure 1: Age Adjusted Incidence Rates.....42

Figure 2: Age Adjusted Mortality Rates.....42

Figure 3: Stage at Diagnosis by Race/Ethnicity.....43

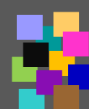
Figure 4: Survival by Summary Stage.....44



All Cause Cancer

Figure 1: Age Adjusted Incidence Rates.....2

Figure 2: Age Adjusted Mortality Rates.....2



1 All Cause Cancer

Figure 1: Age Adjusted Incidence Rates of All Cancer Race/Ethnicity and Sex by Diagnosis Year, 2003-2012

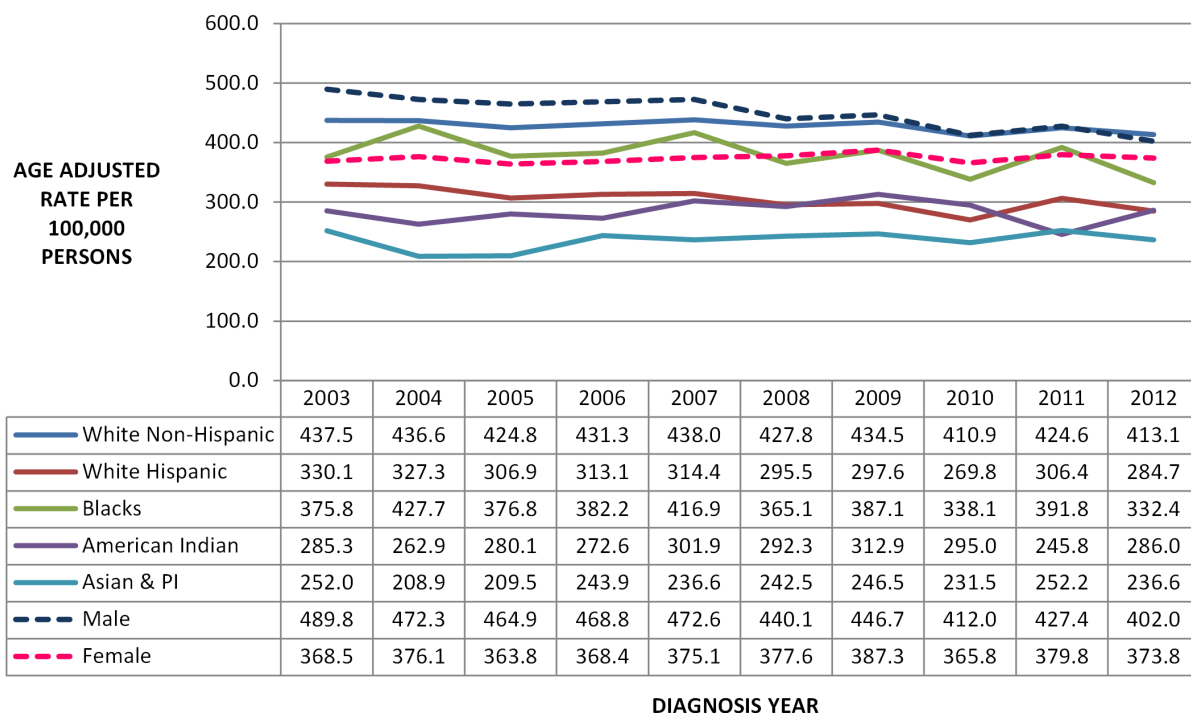
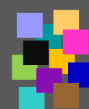
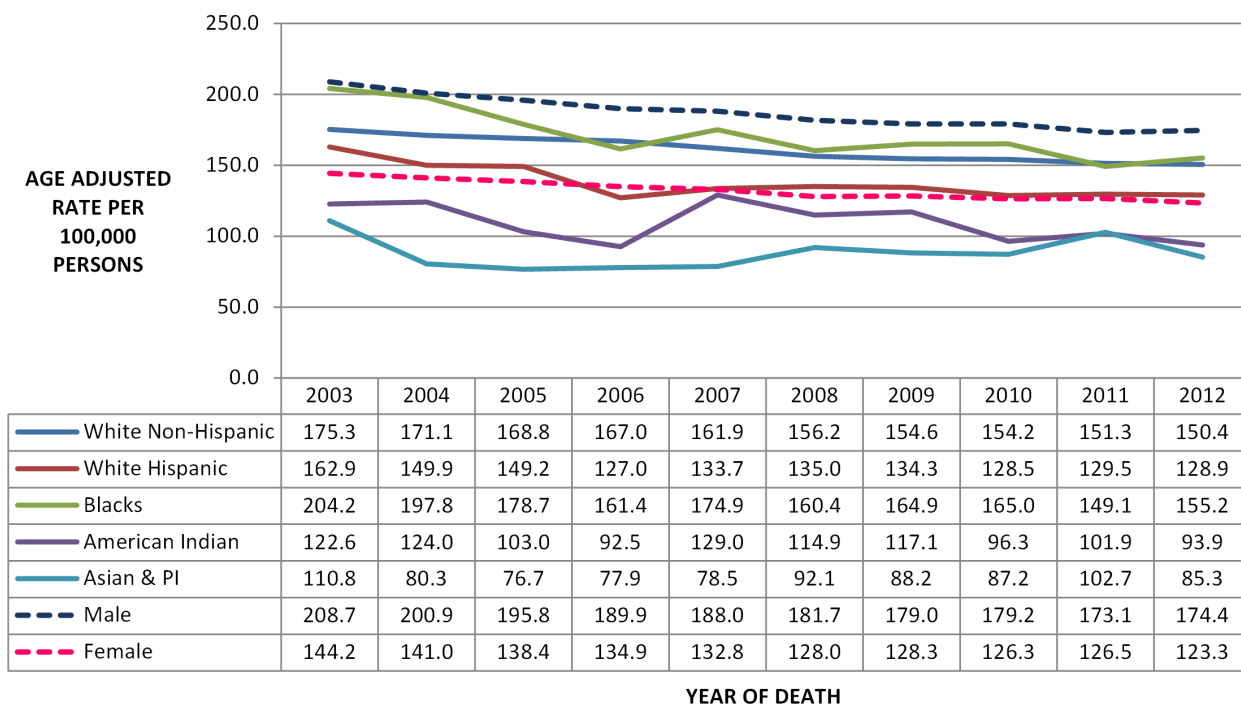


Figure 2: Age Adjusted All Cause Cancer Mortality Rates Race/Ethnicity and Sex by Year of Death, 2003-2012

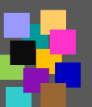




2

Breast Cancer

| | |
|---|---|
| Figure 1: Age Adjusted Incidence Rates..... | 4 |
| Figure 2: Age Adjusted Mortality Rates..... | 4 |
| Figure 3: Stage at Diagnosis by Race/Ethnicity..... | 5 |
| Figure 4: Survival by Summary Stage..... | 6 |
| Figure 5: Case Count by Age/Diagnosis..... | 6 |
| Figure 6: Stage at Diagnosis by Age Group..... | 7 |



2 Breast Cancer

Figure 1: Age Adjusted Incidence Rates of Female Breast Cancer Race/Ethnicity by Diagnosis Year, 2003-2012

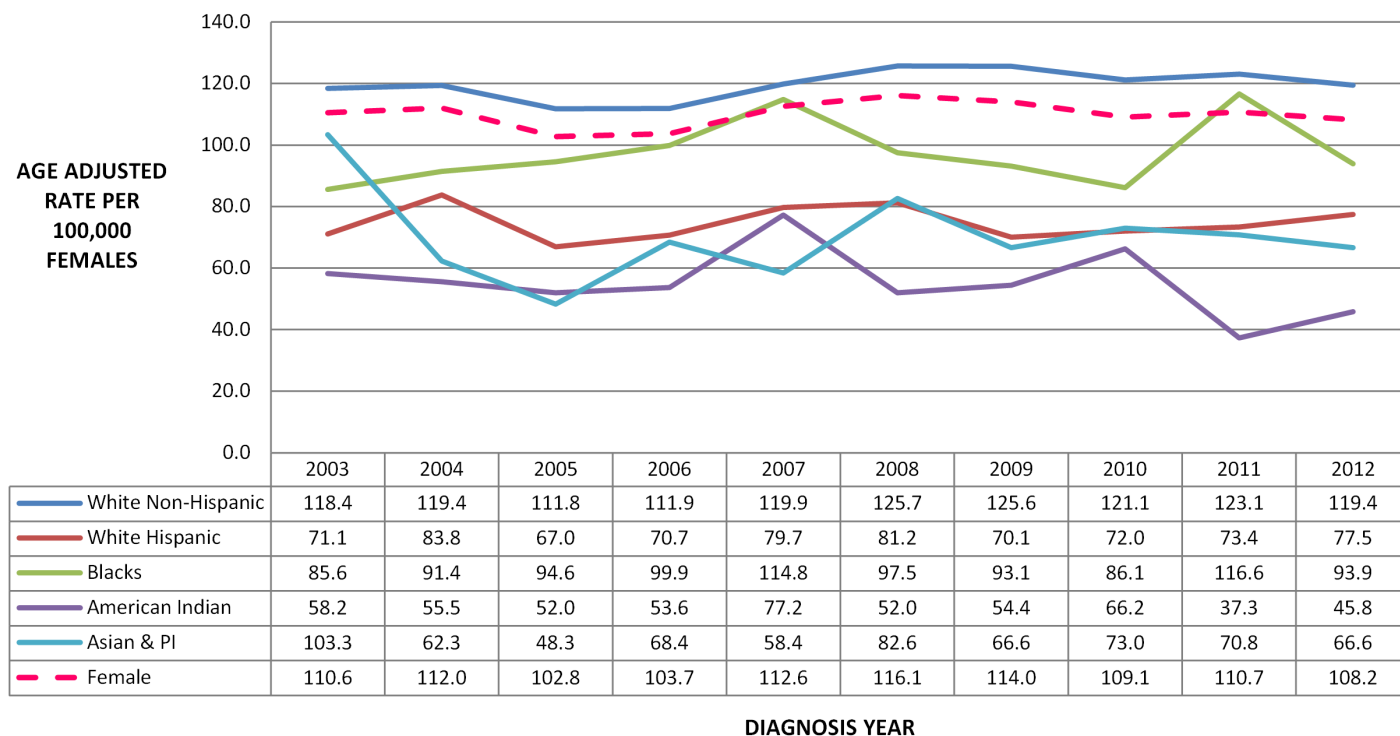
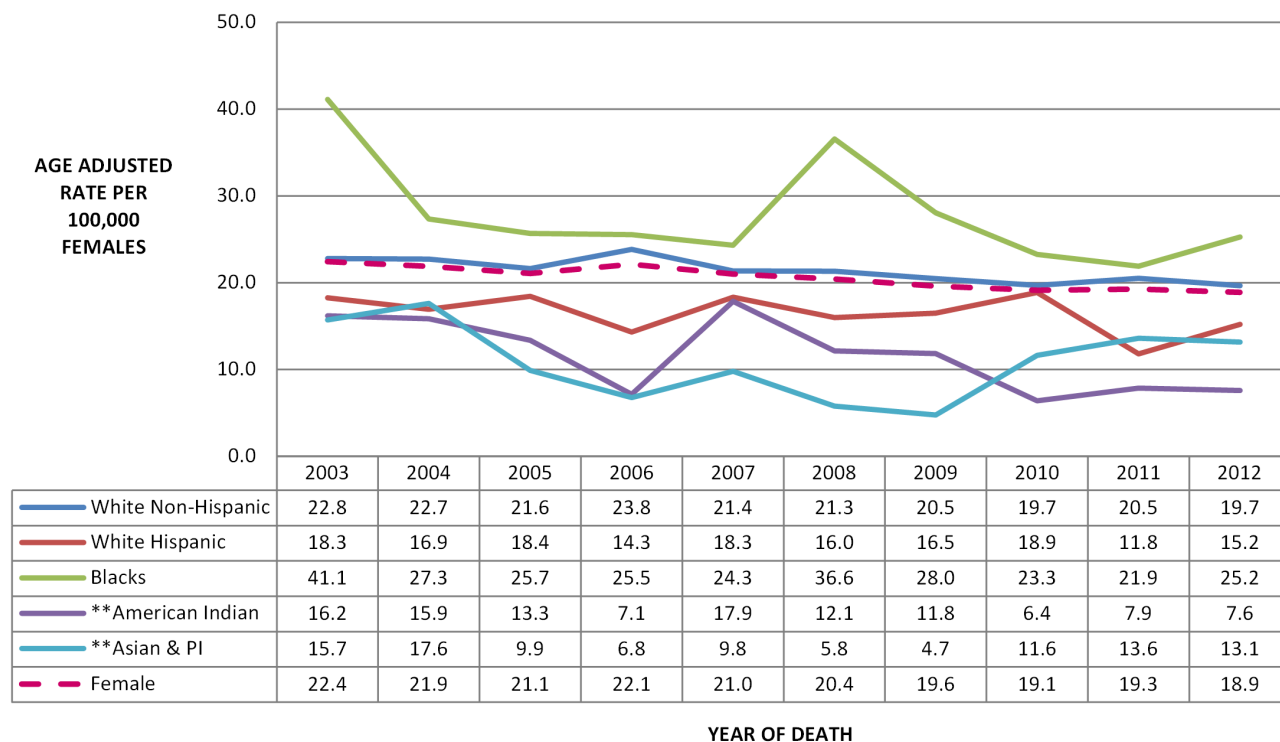
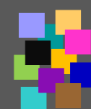


Figure 2: Age Adjusted Breast Cancer Mortality Rates Race/Ethnicity by Year of Death, 2003-2012

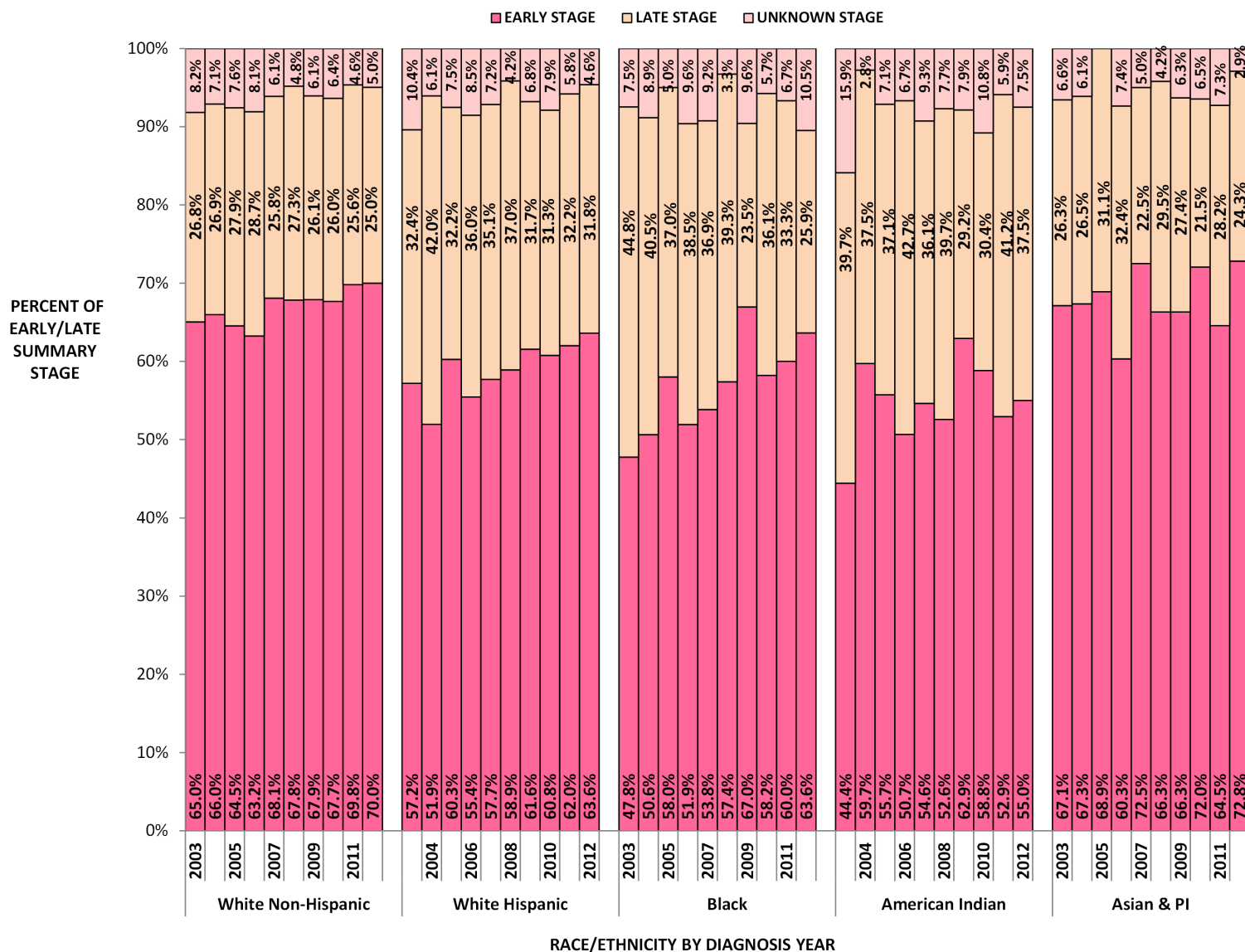


**Counts for these races are <10 for some or all years and should be used with caution



2 Breast Cancer

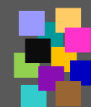
Figure 3: *Early/Late Summary Stage Race/Ethnicity by Diagnosis Year: Female Breast Cancer, 2003-2012



*Early Stage = In Situ and Local Stage; Late Stage= Regional and Distant using SEER Summary Stage

Note: Total percentage of each stage for each year may not equal 100% due to rounding

Total of 655 cases (1.4% of all cases) with an unknown or other race were excluded from this graph for all years



2 Breast Cancer

Figure 4: Five Year Relative Survival of Invasive Female Breast Cancer By Summary Stage for Diagnosis Years, 1995-2009

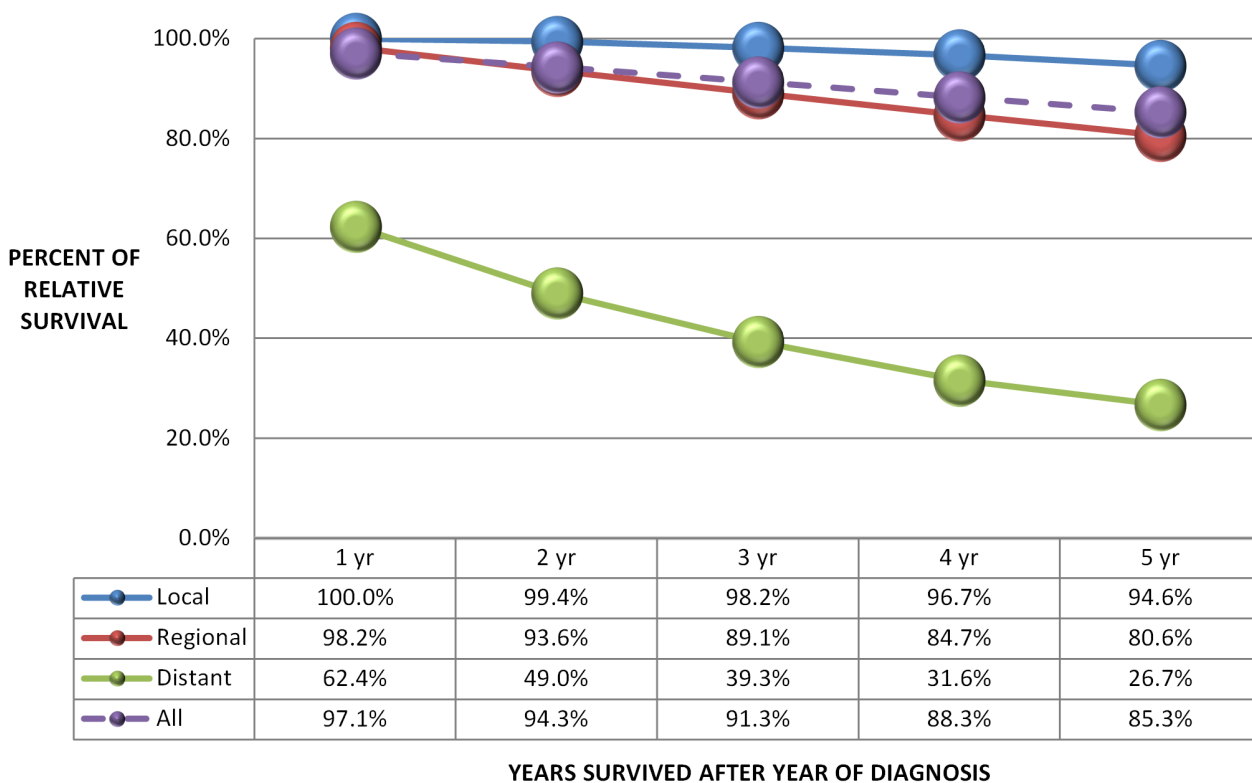
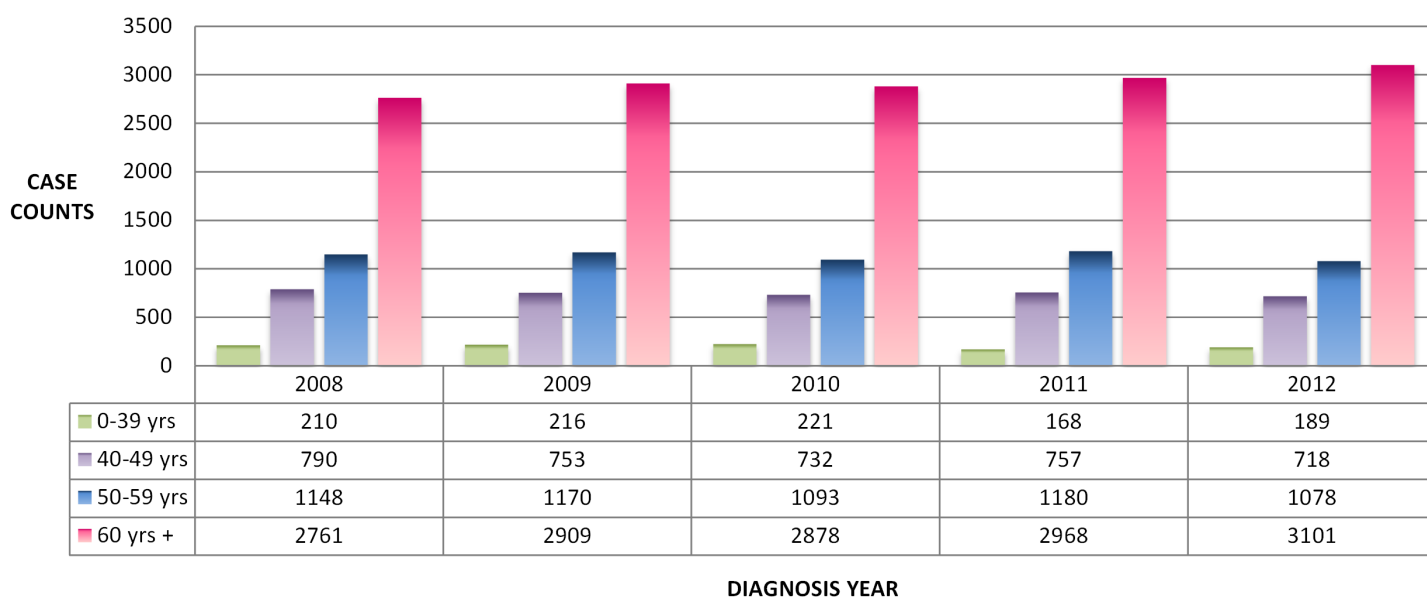
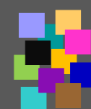


Figure 5: Case Count by Age Group^ and Diagnosis Year: Female Breast Cancer, 2008-2012

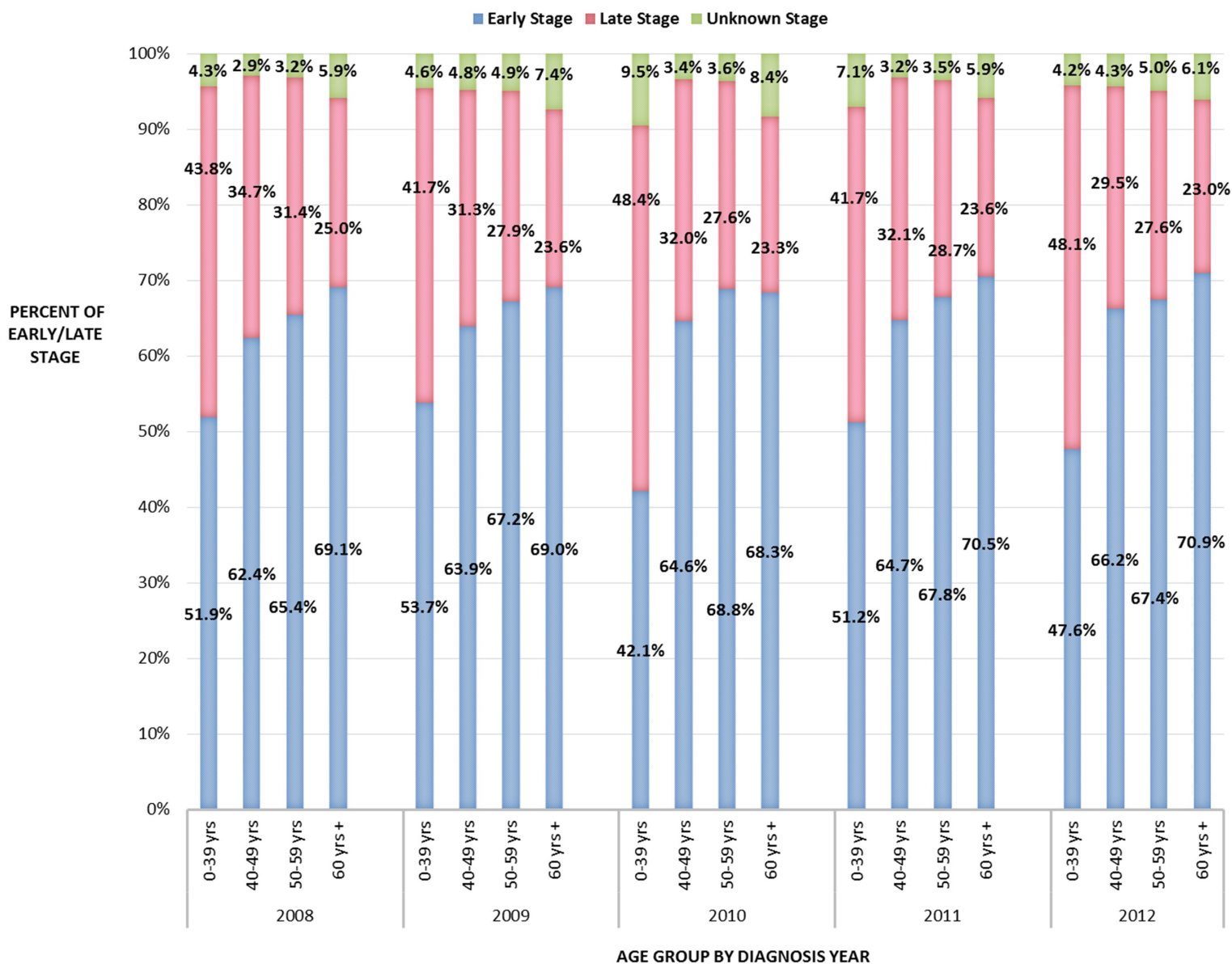


^Excludes 4 cases with an unknown age



2 Breast Cancer

Figure 6: *Early/Late Summary Stage by Age Group^ and Diagnosis Year: Female Breast Cancer, 2008–2012



*Early Stage = In Situ and Local Stage; Late Stage= Regional and Distant using SEER Summary Stage

^Excludes 4 cases with an unknown age

Note: Total percentage for each stage for each year may not equal 100% due to rounding

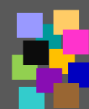




3

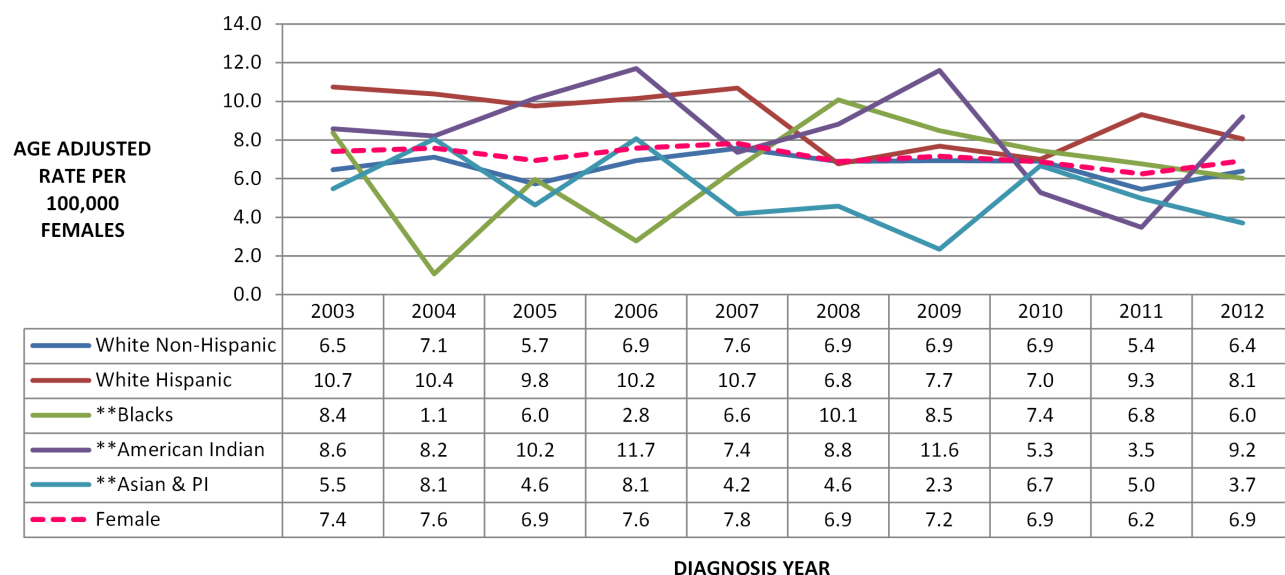
Cervical Cancer

| | |
|---|----|
| Figure 1: Age Adjusted Incidence Rates..... | 9 |
| Figure 2: Age Adjusted Mortality Rates..... | 9 |
| Figure 3: Stage at Diagnosis by Race/Ethnicity..... | 10 |
| Figure 4: Survival by Summary Stage..... | 11 |



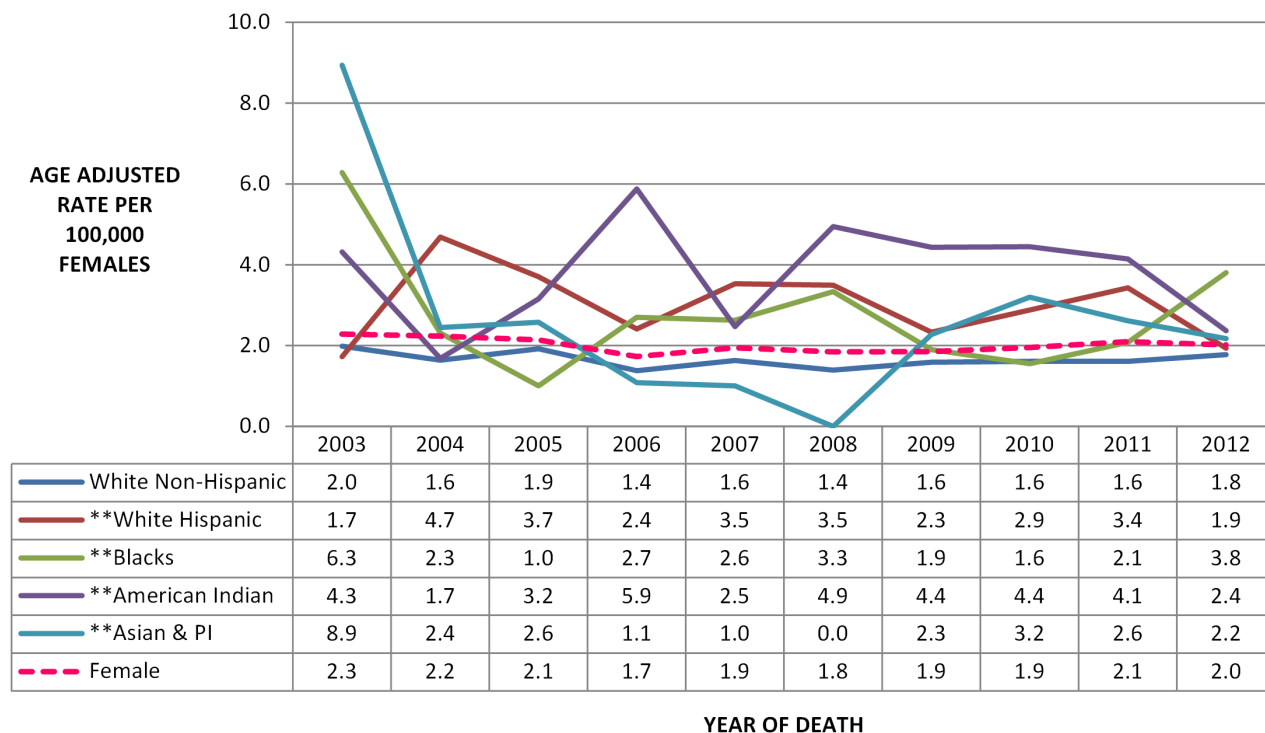
3 Cervical Cancer

Figure 1: Age Adjusted Cervical Cancer Incidence Rates Race/Ethnicity by Diagnosis Year, 2003-2012

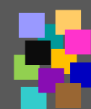


** Counts for these races are <10 for some or all years, therefore, rates are highly unstable should be used with caution
 Note: Total of 36 cases (1.7% of all cases) with an unknown or other race were excluded from this graph for all years

Figure 2: Age Adjusted Cervical Cancer Mortality Rates Race/Ethnicity by Year of Death, 2003-2012

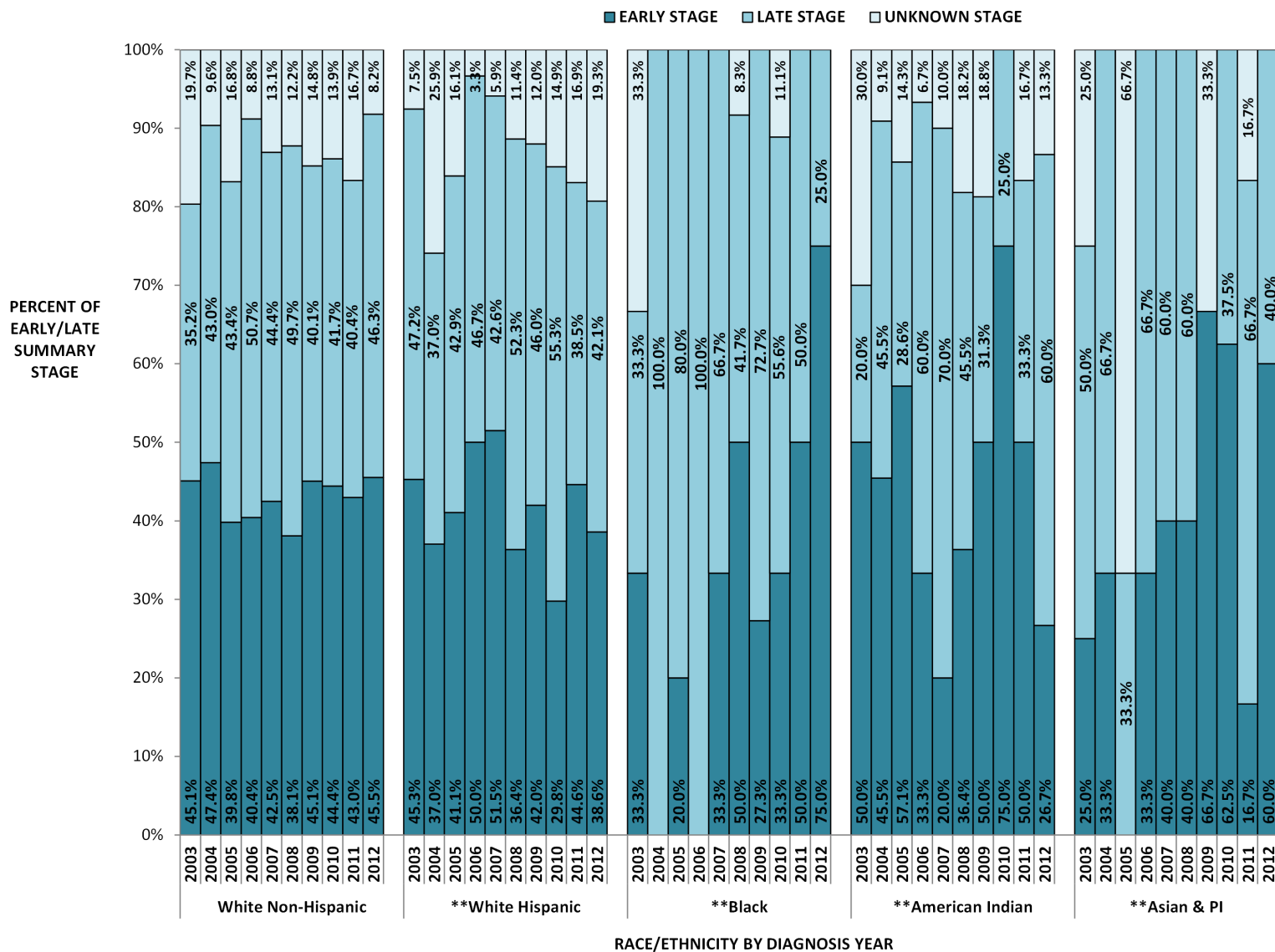


** Counts for these races are <10 for some or all years, therefore, rates are highly unstable should be used with caution
 Note: Total of 2 cases (0.3% of all cases) with an unknown or other race were excluded from this graph for all years



3 Cervical Cancer

Figure 3: *Early/Late Summary Stage Race/Ethnicity by Diagnosis Year: Cervical Cancer, 2003-2012



*Early Stage = In Situ and Local Stage; Late Stage= Regional and Distant using SEER Summary Stage

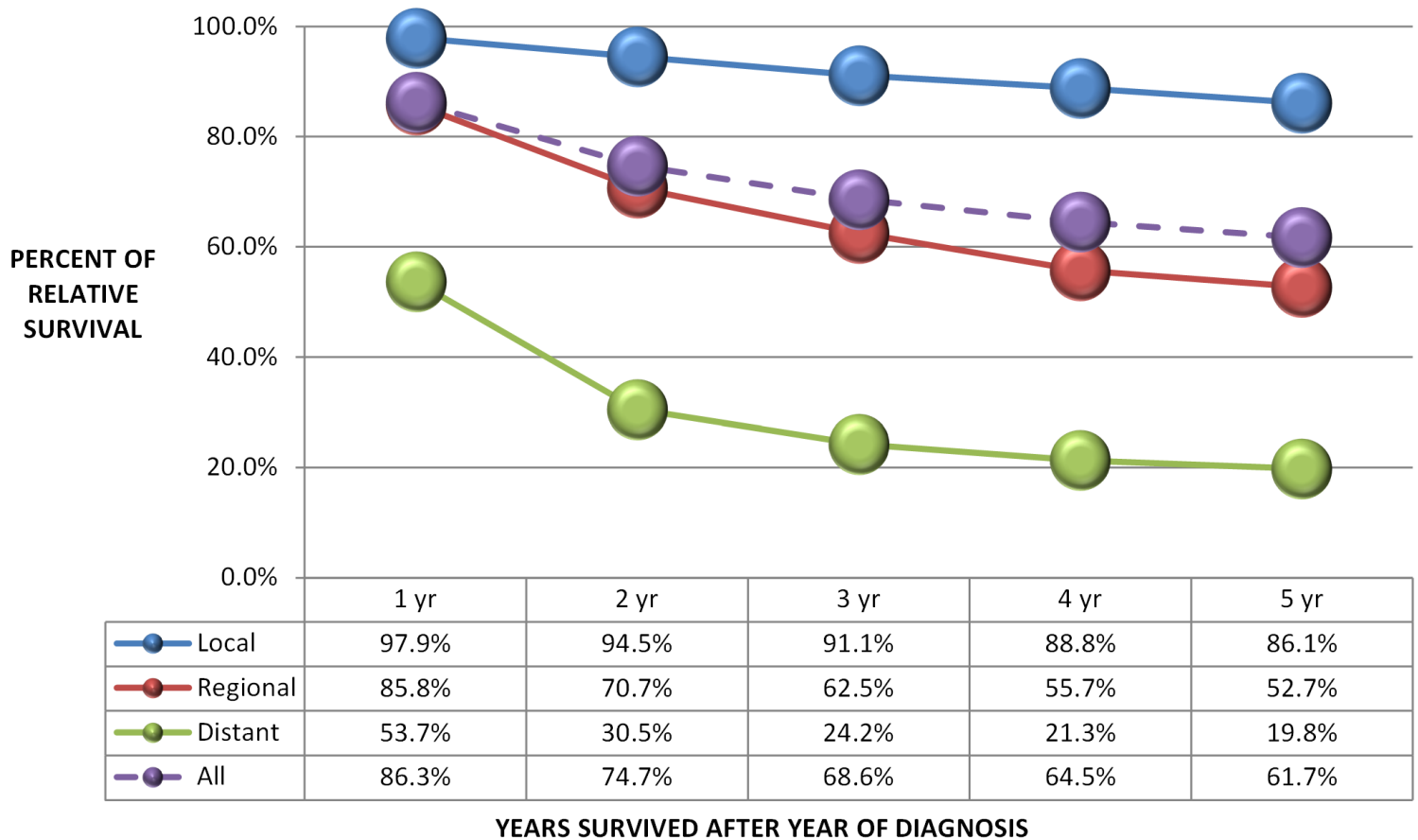
**Counts for these races are <10 for some or all years, therefore, rates are highly unstable should be used with caution

Note: Total percentage of each stage for each year may not equal 100% due to rounding

Total of 36 cases (1.7% of all cases) with an unknown or other race were excluded from this graph for all years



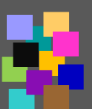
Figure 4: Five Year Relative Survival of Invasive Cervical Cancer by Summary Stage for Diagnosis Years, 1995-2009



4

Colorectal Cancer

| | |
|---|----|
| Figure 1: Age Adjusted Incidence Rates..... | 13 |
| Figure 2: Age Adjusted Mortality Rates..... | 13 |
| Figure 3: Stage at Diagnosis by Race/Ethnicity..... | 14 |
| Figure 4: Survival by Summary Stage..... | 15 |
| Figure 5: Case Count by Age/Diagnosis..... | 15 |
| Figure 6: Stage at Diagnosis by Age Group..... | 16 |
| Figure 7: Survival by Race/Ethnicity..... | 17 |



4 Colorectal Cancer

Figure 1: Age Adjusted Colorectal Cancer Incidence Rates/Ethnicity and Sex by Diagnosis Year, 2003-2012

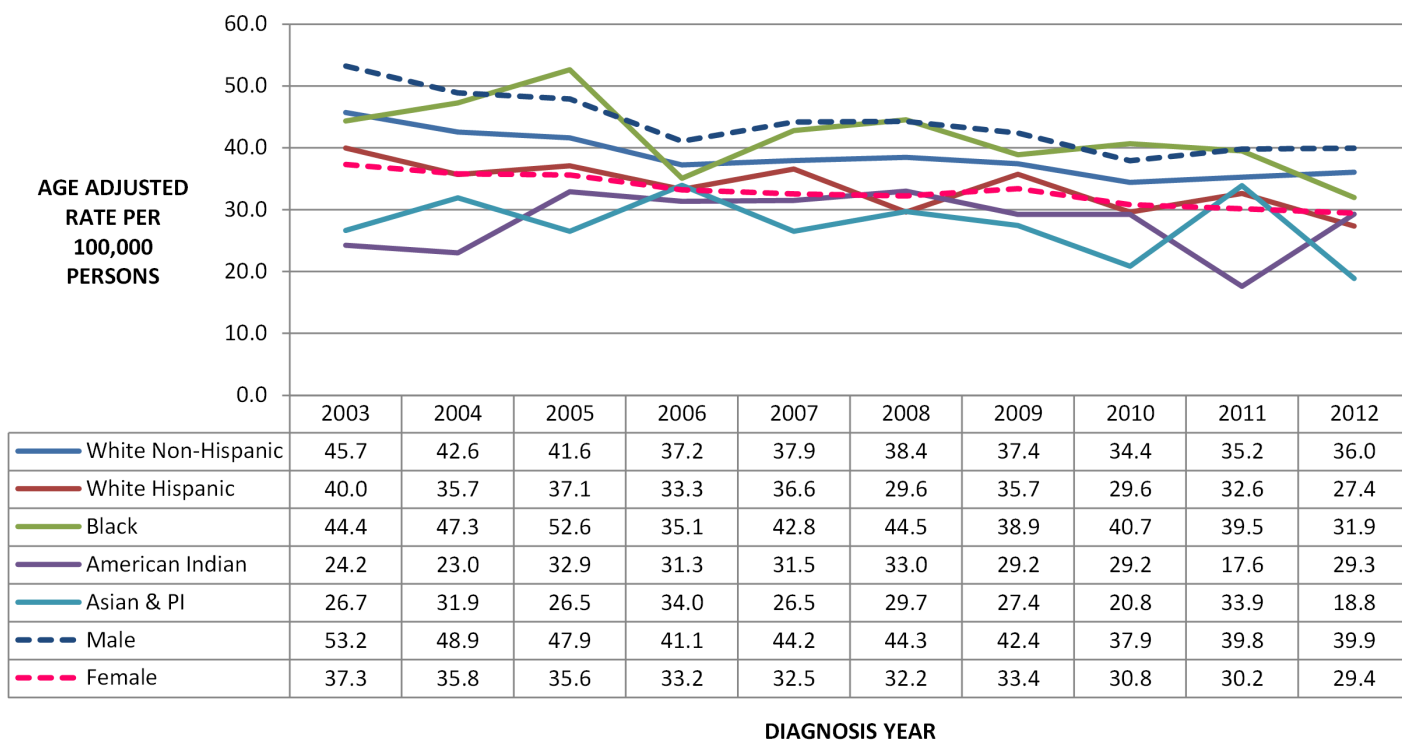
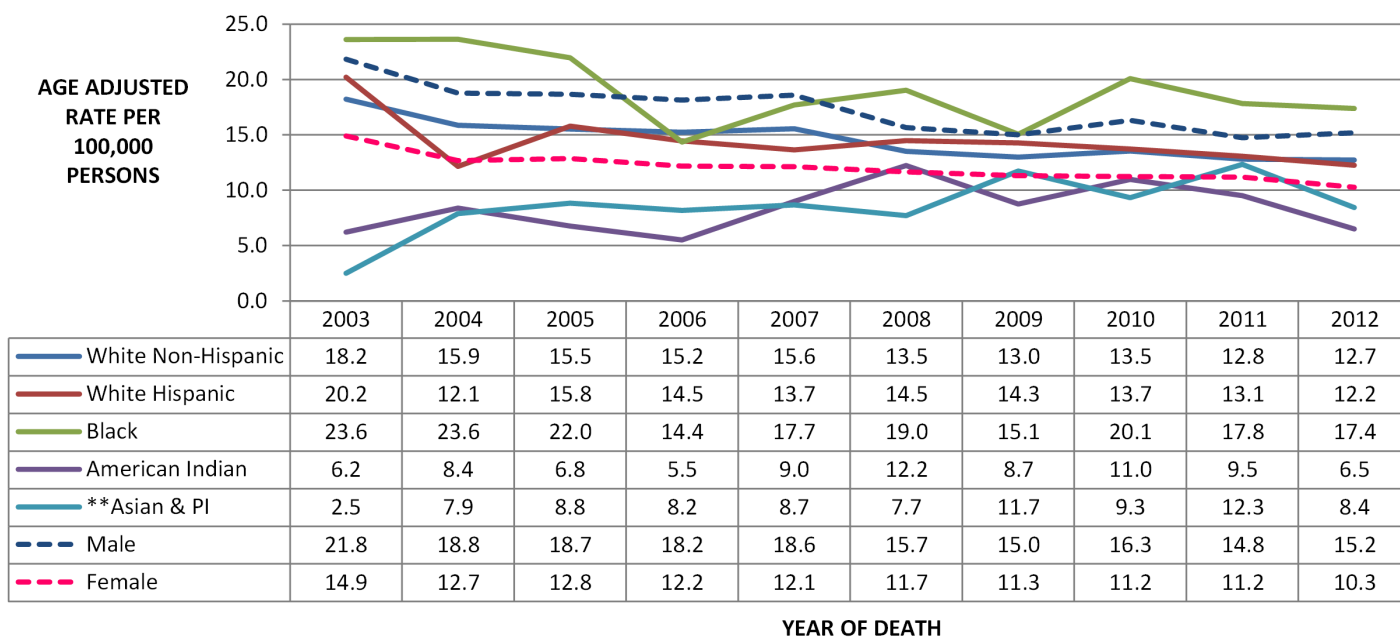
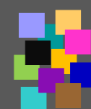


Figure 2: Age Adjusted Colorectal Cancer Mortality Rates Race/Ethnicity and Sex by Year of Death, 2003-2012

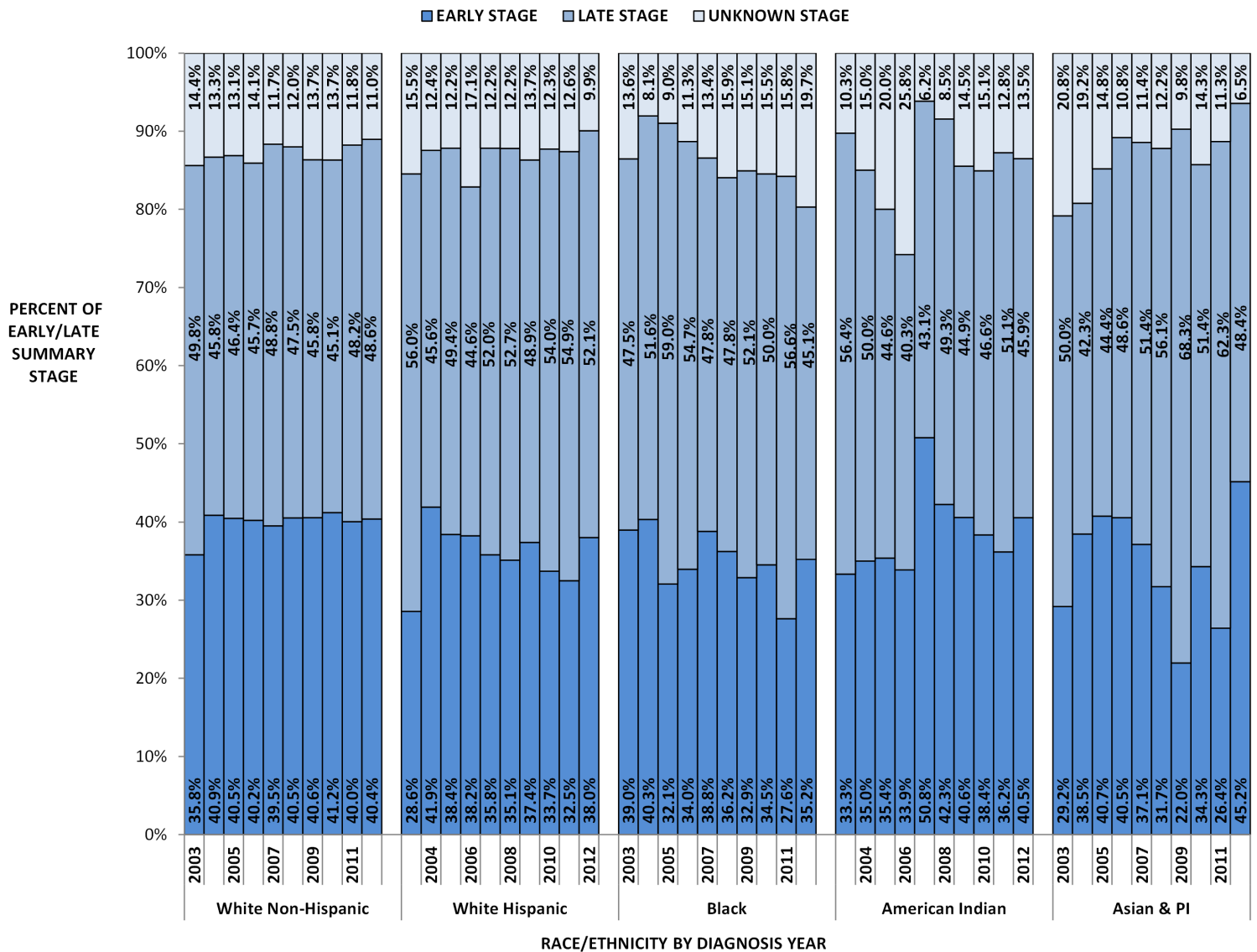


**Counts for these races are <10 for some or all years, therefore, rates are highly unstable and should be used with caution



4 Colorectal Cancer

Figure 3: *Early/Late Summary Stage Race/Ethnicity by Diagnosis Year: Colorectal Cancer, 2003-2012



*Early Stage = In Situ and Local Stage; Late Stage= Regional and Distant using SEER Summary Stage

Note: Total percentage of each stage for each year may not equal 100% due to rounding

Total of 289 cases (1.1% of all cases) with an unknown or other race were excluded from this graph for all years



4 Colorectal Cancer

Figure 4: Five Year Relative Survival of Invasive Colorectal Cancer by Summary Stage for Diagnosis Years, 1995-2009

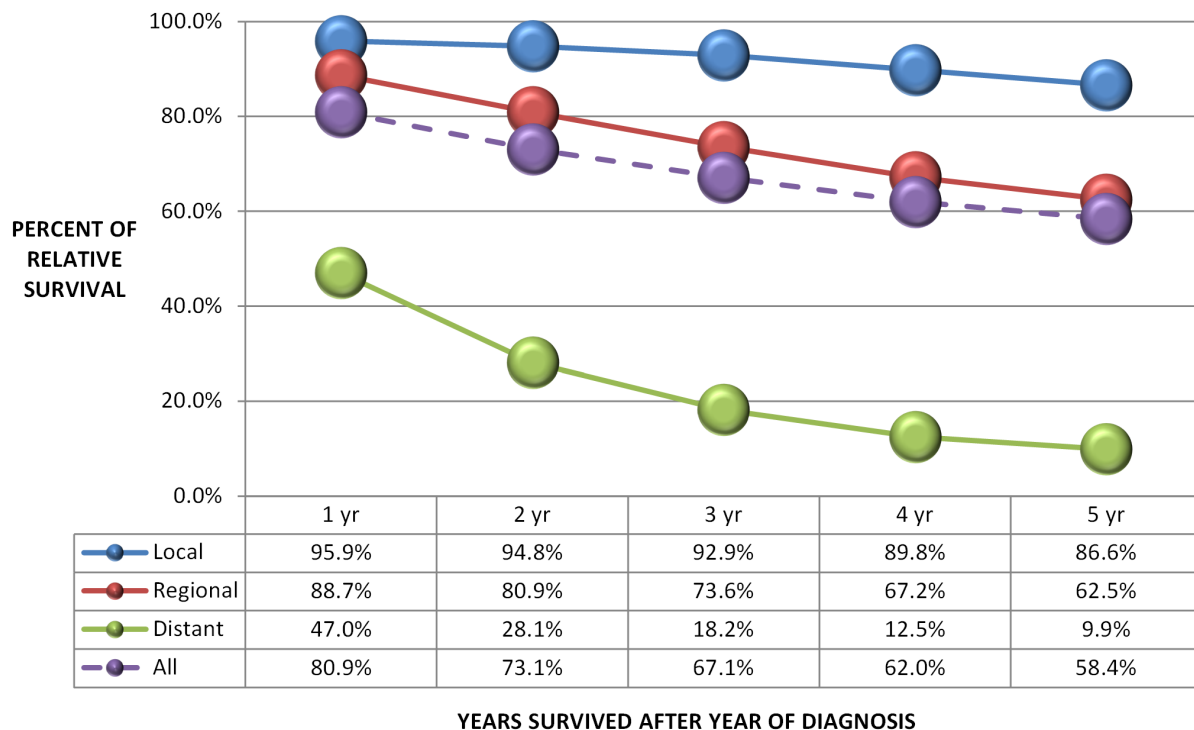


Figure 5: Case Count by Age Group and Diagnosis Year: Colorectal Cancer, 2008-2012

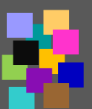
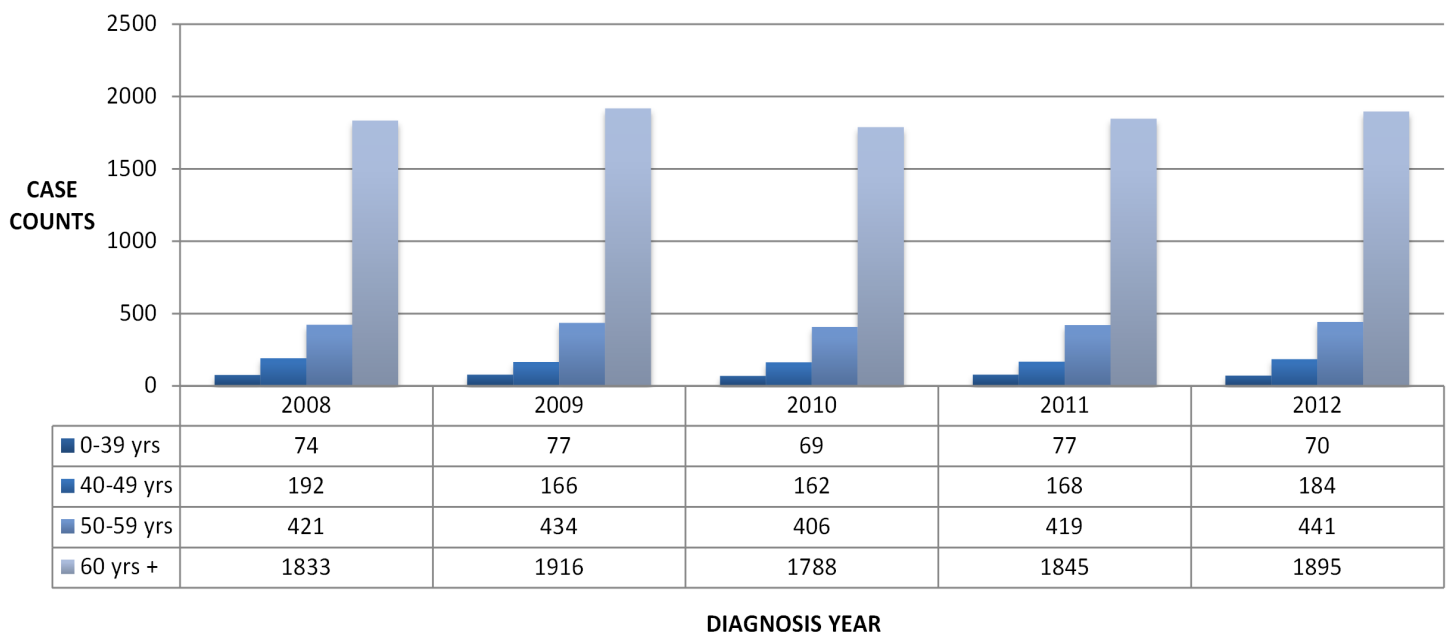
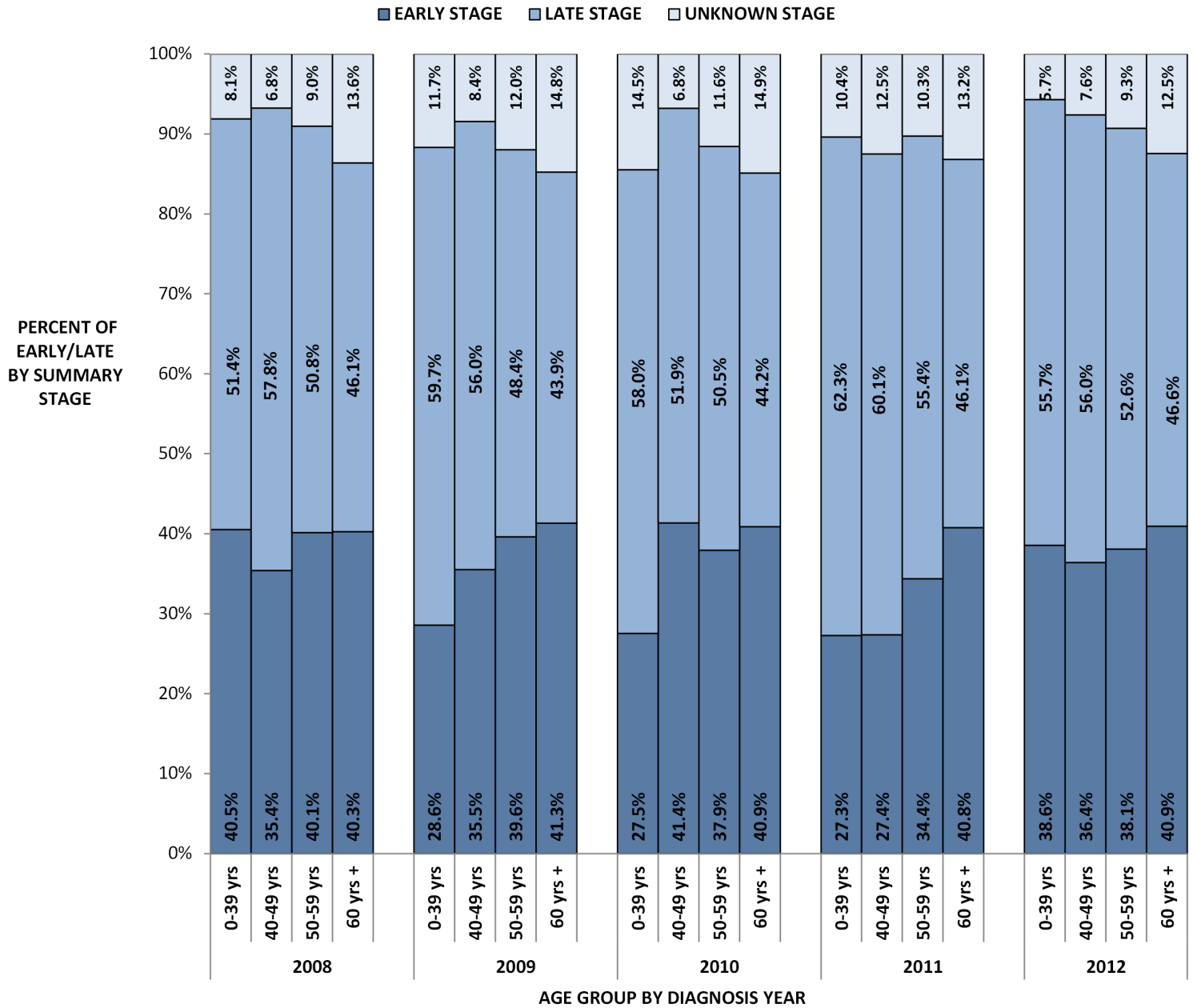
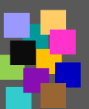


Figure 6: *Early/Late Summary Stage by Age Group and Diagnosis Year: Colorectal Cancer, 2008-2102

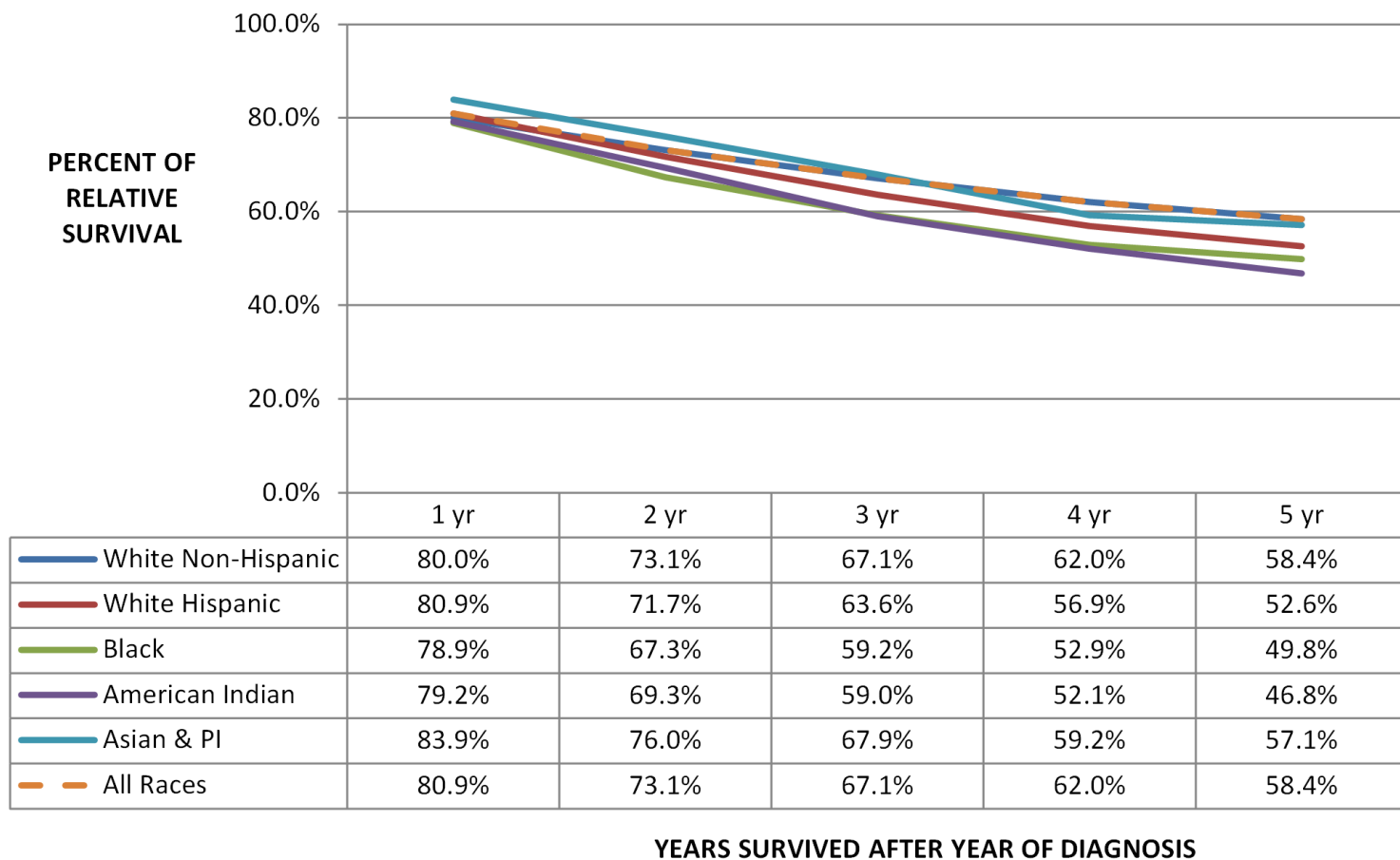


*Early Stage = In Situ and Local Stage; Late Stage= Regional and Distant using SEER Summary Stage
 Note: Total percentage of each stage for each year may not equal 100% due to rounding



4 Colorectal Cancer

**Figure 7: Five Year Relative Survival of Invasive Colorectal Cancer by Race/Ethnicity
for Diagnosis Years, 1995-2009**

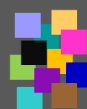




5

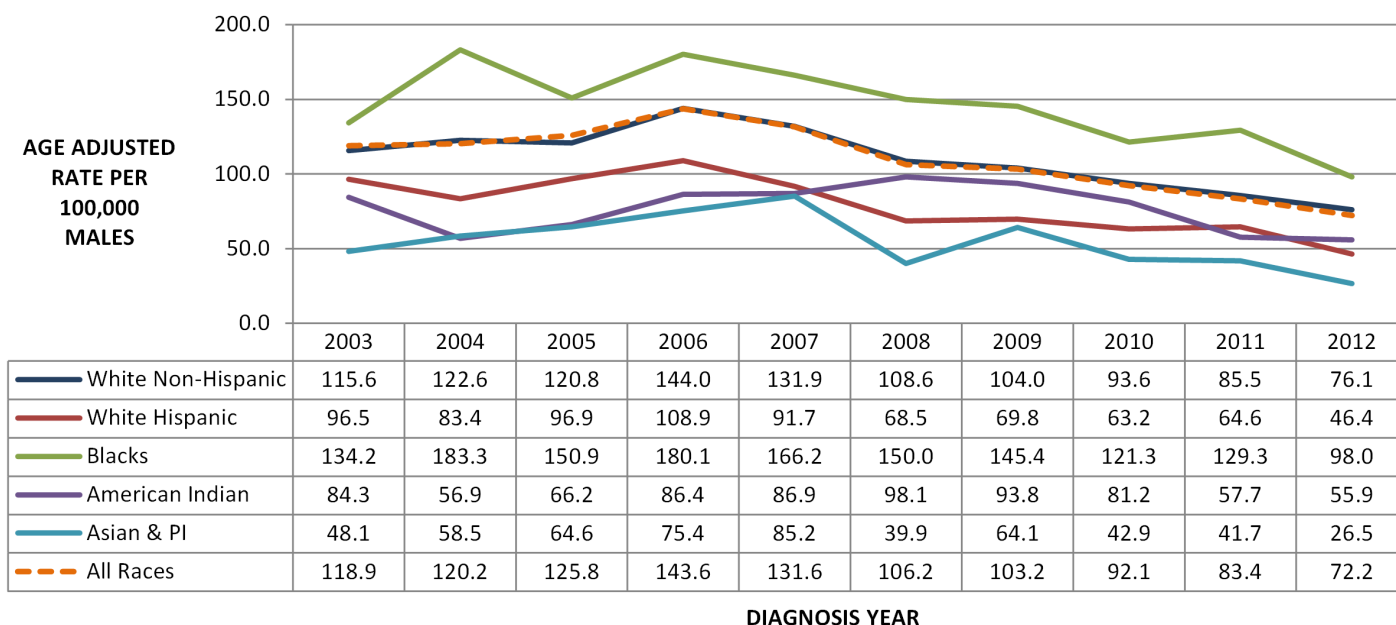
Prostate Cancer

| | |
|---|----|
| Figure 1: Age Adjusted Incidence Rates..... | 19 |
| Figure 2: Age Adjusted Mortality Rates..... | 19 |
| Figure 3: Stage at Diagnosis by Race/Ethnicity..... | 20 |
| Figure 4: Survival by Summary Stage..... | 21 |



5 Prostate Cancer

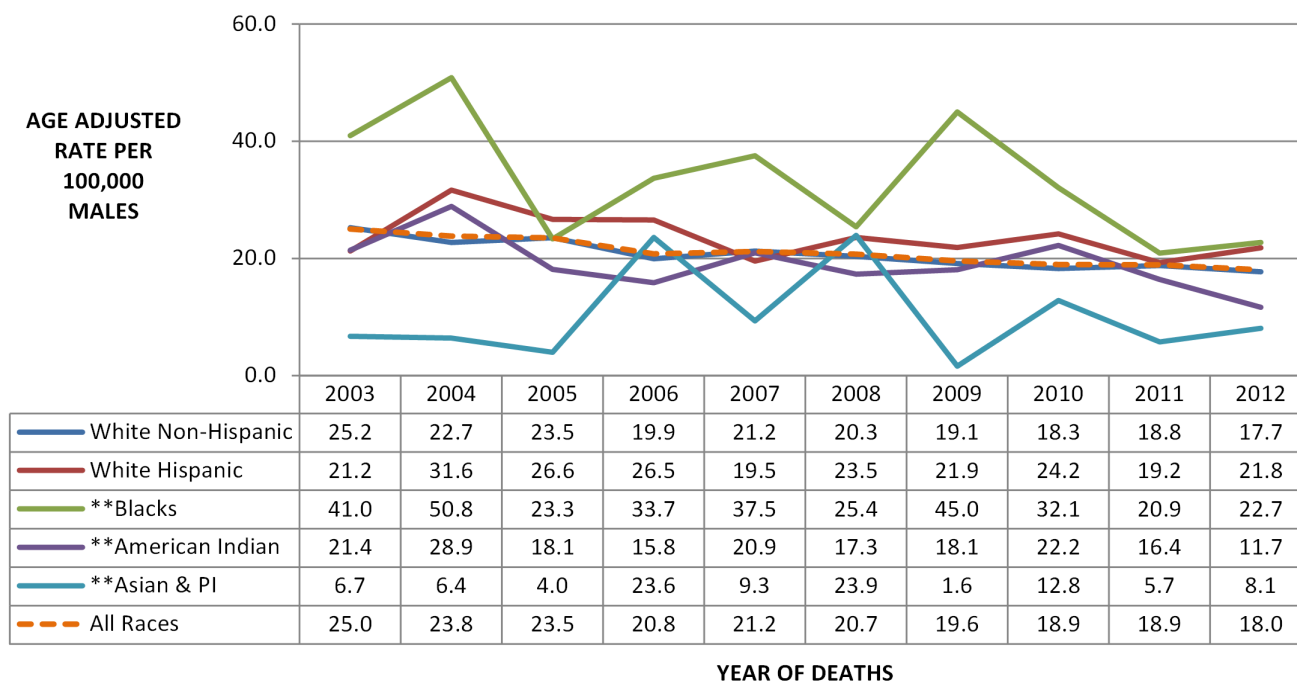
Figure 1: Age Adjusted Prostate Incidence Rates Race/Ethnicity by Diagnosis Year, 2003-2012



Note: Total of 1,472 cases (4.3% of all cases) with an unknown or other race were excluded from this graph for all years

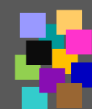
When reviewing the rates presented, the reader should keep in mind that Arizona rates are most likely higher than shown as not all early stage prostate cancer cases have been reported

Figure 2: Age Adjusted Prostate Cancer Mortality Rates Race/Ethnicity by Year of Death, 2003-2012



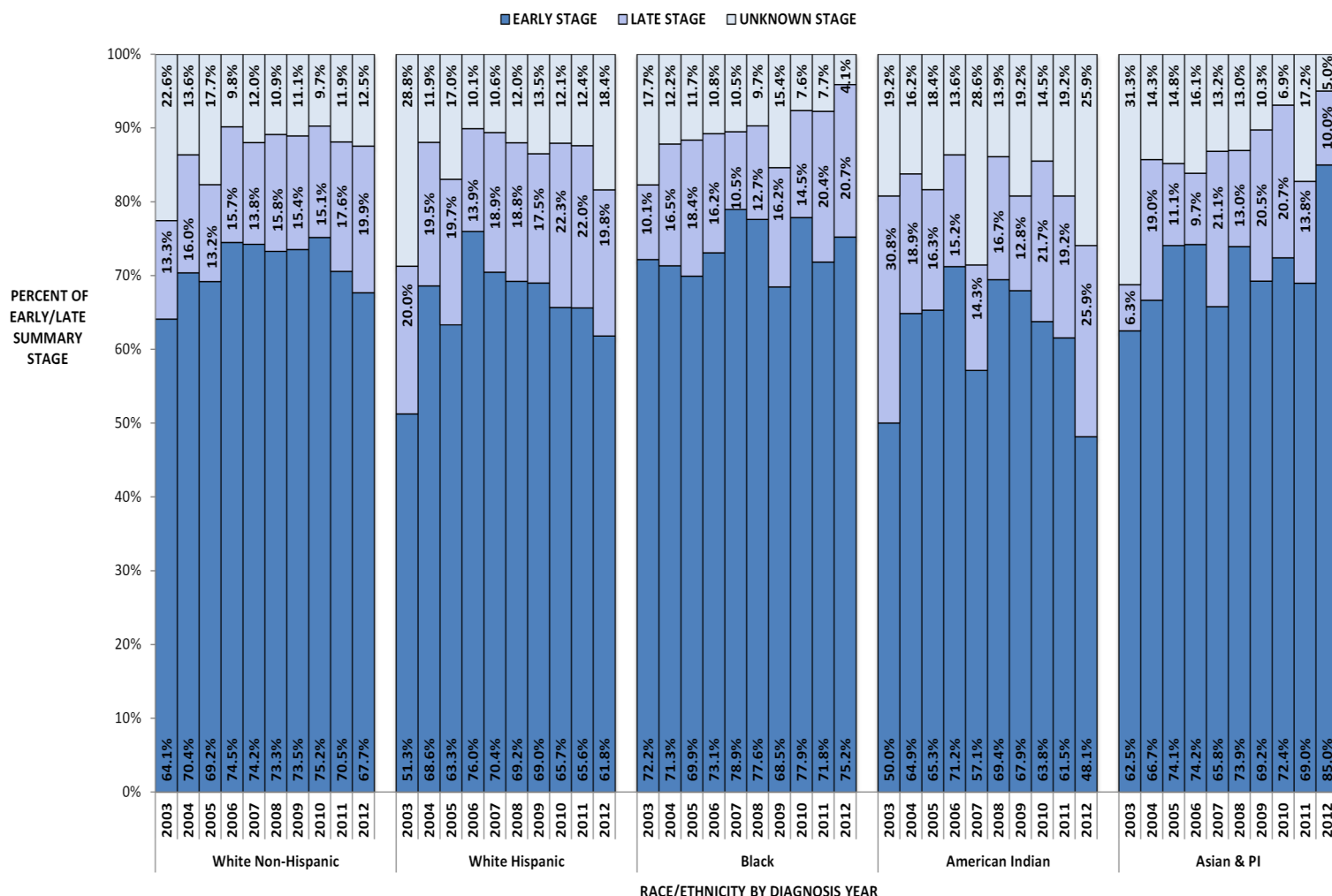
** Counts for these races are <10 for some or all years, therefore, rates are highly unstable should be used with caution

Notes: Total of 16 cases (0.3% of all cases) with an unknown or other race were excluded from this graph for all years



5 Prostate Cancer

Figure 3: Early/Late Summary Stage Race/Ethnicity by Diagnosis Year: Prostate Cancer, 2003-2012

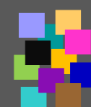


*Early Stage = In Situ and Local Stage; Late Stage= Regional and Distant using SEER Summary Stage

Notes: Total percentage of each stage for each year may not equal 100% due to rounding

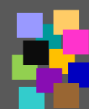
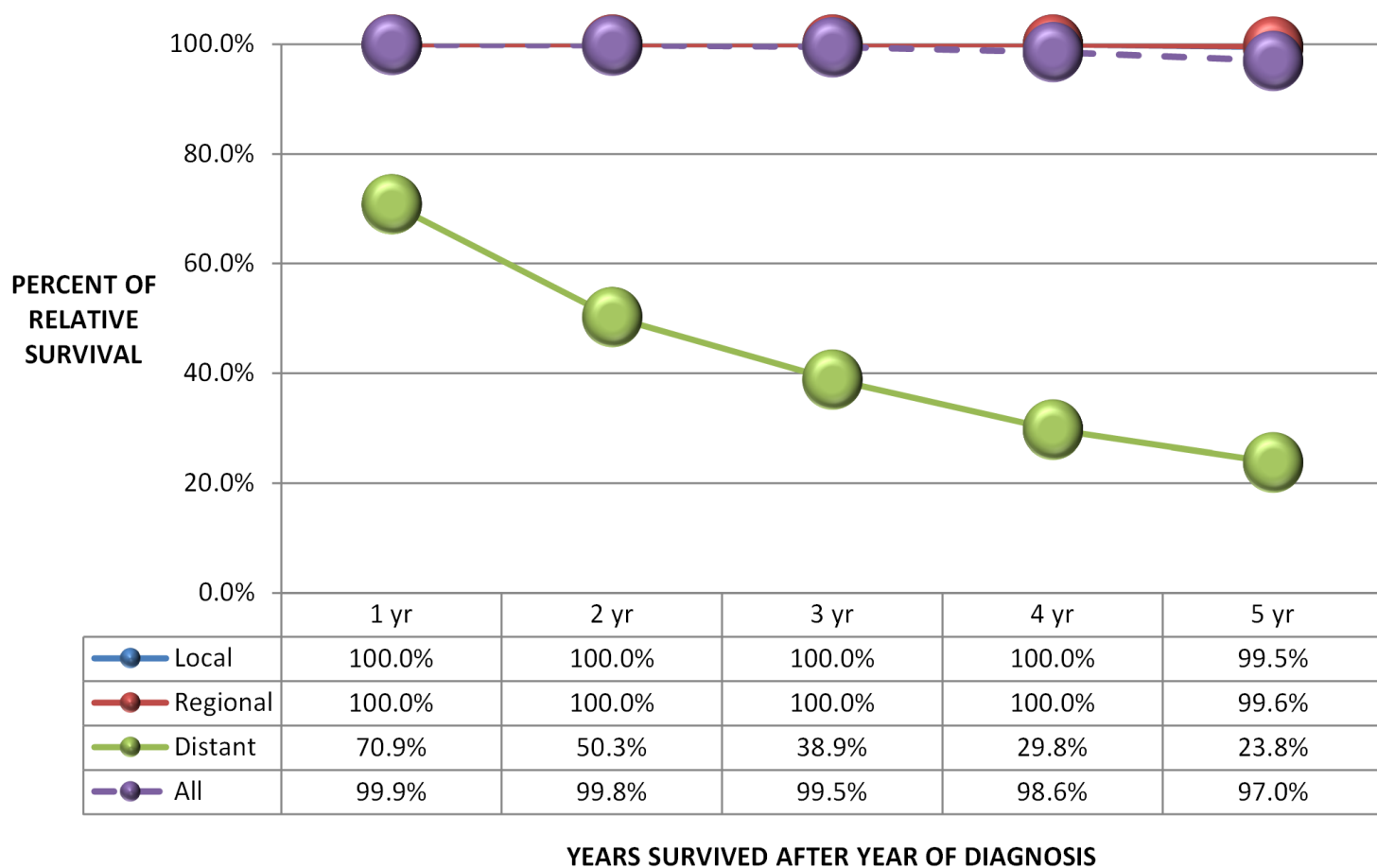
Total of 1,472 cases (4.3% of all cases) with an unknown or other race were excluded from this graph for all years

When reviewing the percentages presented, the reader should keep in mind that prostate cancer percentages may be different than shown as not all early stage prostate cancer cases have been reported



5 Prostate Cancer

Figure 4: Five Year Relative Survival of Invasive Prostate Cancer by Summary Stage for Diagnosis Years, 1995-2009

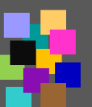




6

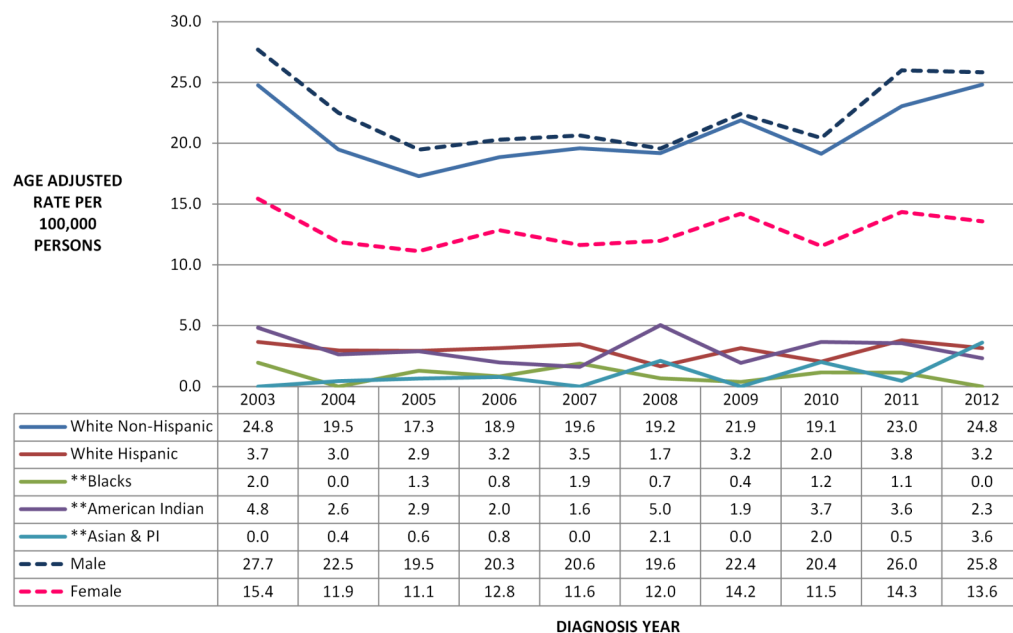
Melanoma

| | |
|---|----|
| Figure 1: Age Adjusted Incidence Rates..... | 23 |
| Figure 2: Age Adjusted Mortality Rates..... | 23 |
| Figure 3: Stage at Diagnosis by Race/Ethnicity..... | 24 |
| Figure 4: Survival by Summary Stage..... | 25 |



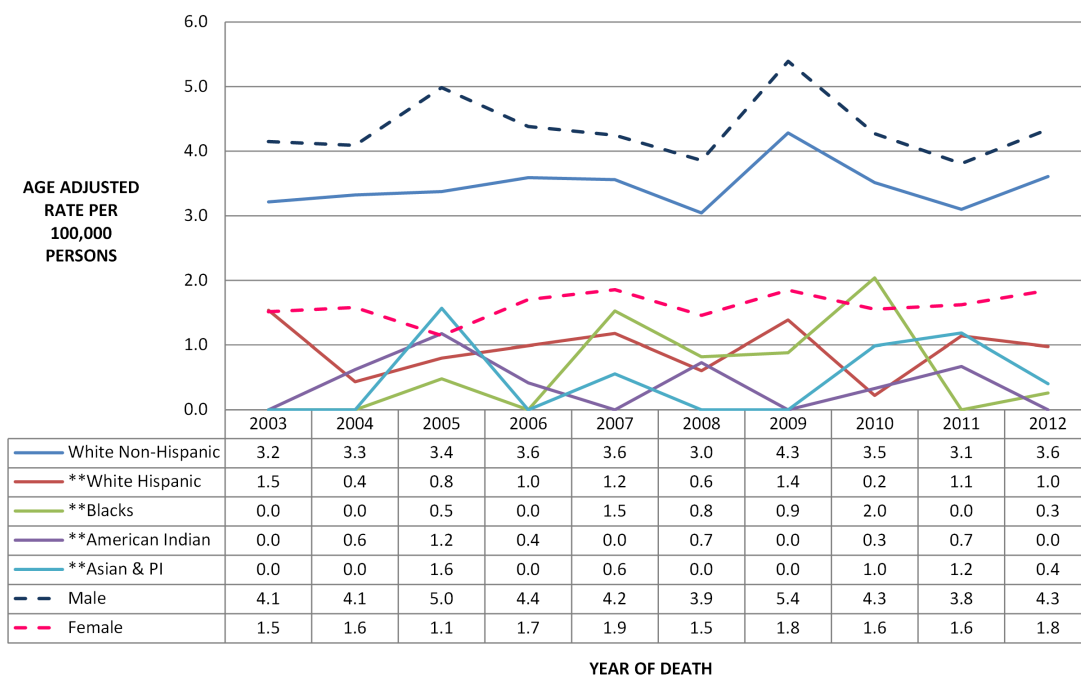
6 Melanoma

Figure 1: Age Adjusted Melanoma Incidence Rates Race/Ethnicity and Sex by Diagnosis Year, 2003-2012



** Counts for these races are <10 for some or all years, therefore, rates are highly unstable should be used with caution
 Note: Total of 707 cases (6.4% of all cases) with an unknown or other race were excluded from this graph for all years

Figure 2: Age Adjusted Melanoma Mortality Rates Race/Ethnicity and Sex by Year of Death, 2003-2012



** Counts for these races are <10 for some or all years, therefore, rates are highly unstable should be used with caution
 Note: Total of 6 cases (0.3% of all cases) with an unknown or other race were excluded from this graph for all years

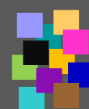
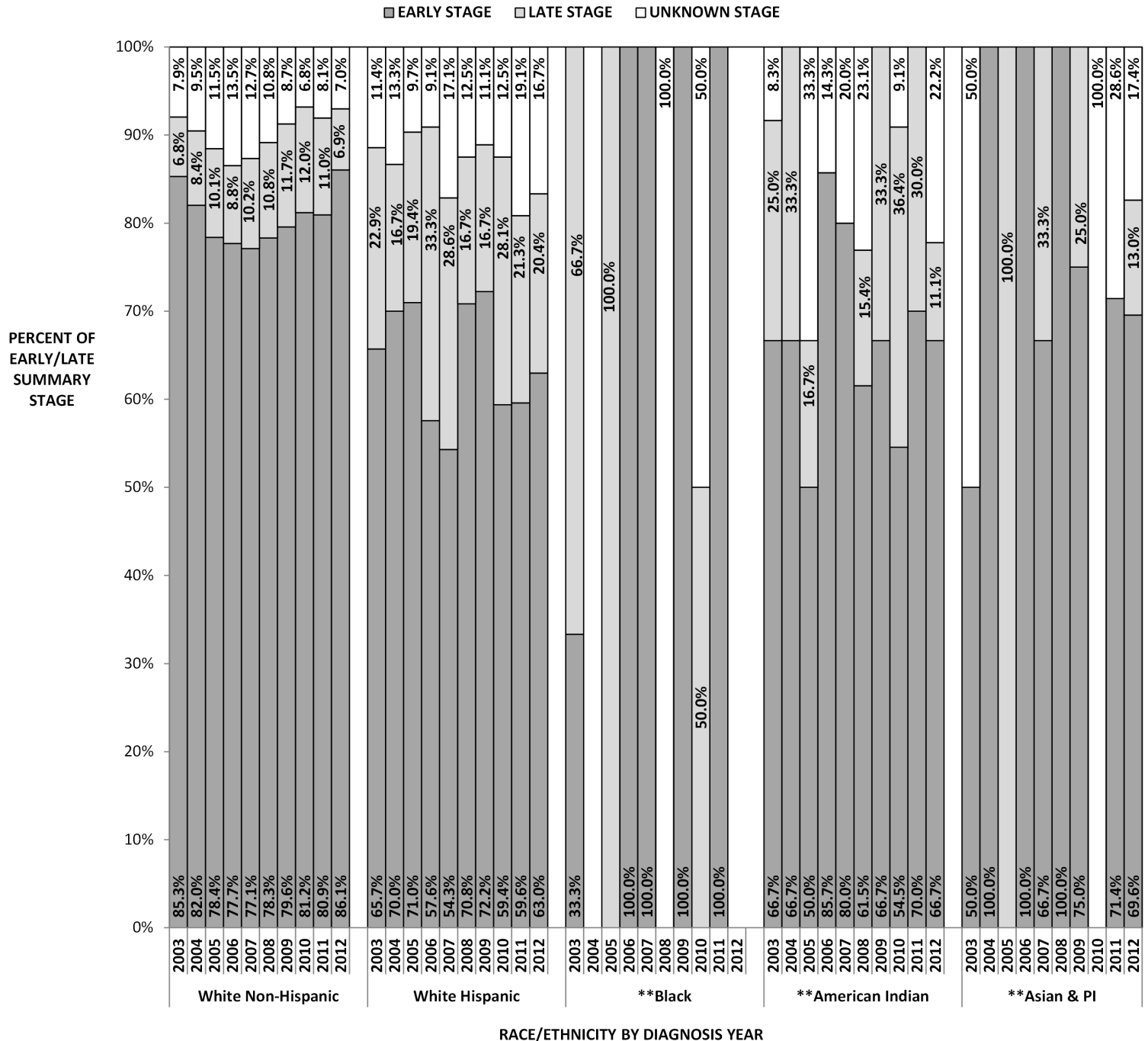


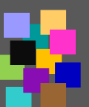
Figure 3: *Early/Late Summary Stage Race/Ethnicity by Diagnosis Year: Melanoma, 2003-2012



* Early Stage = In Situ and Local Stage; Late Stage= Regional and Distant using SEER Summary Stage

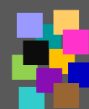
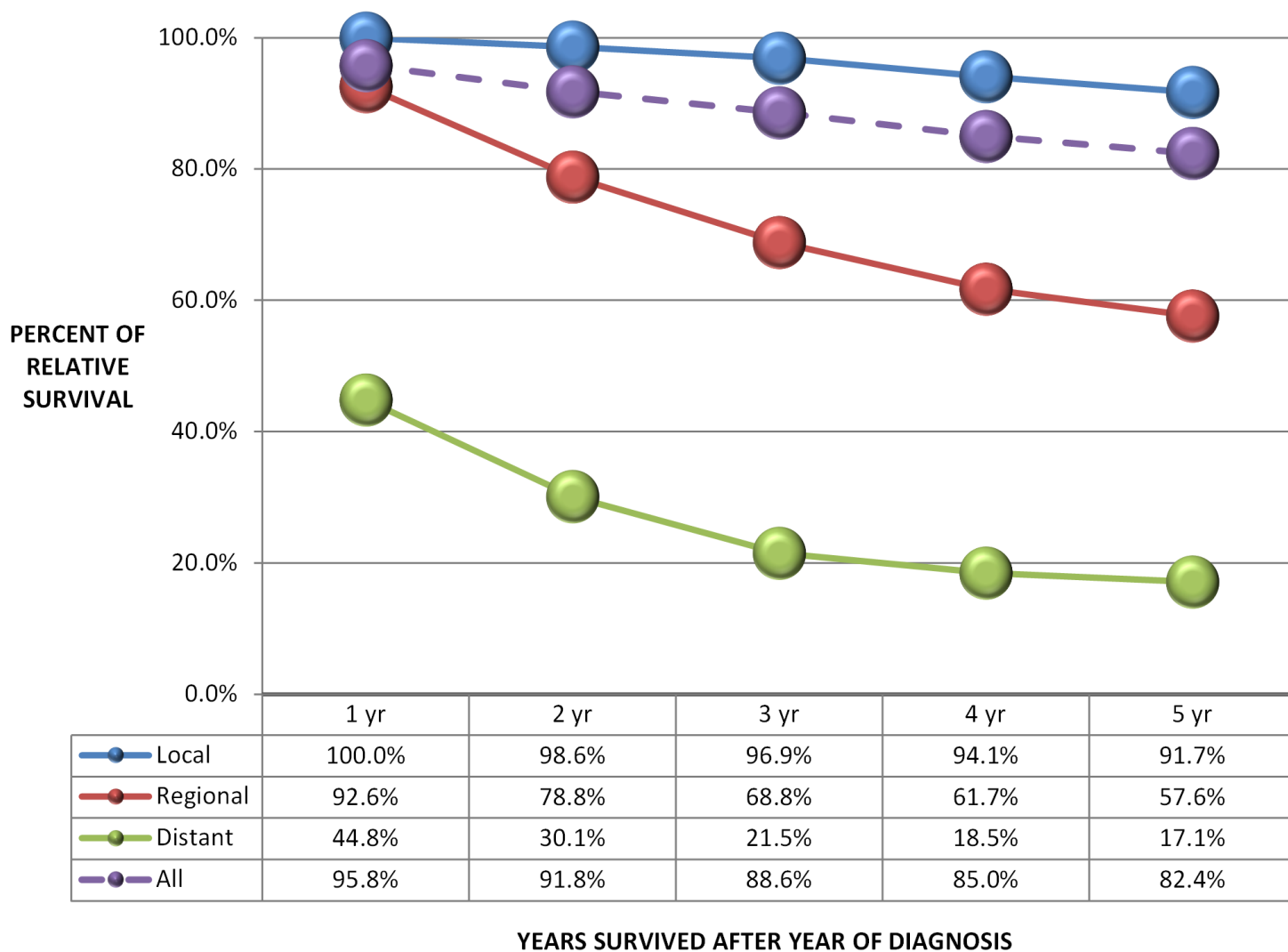
** Counts for these races are <10 for some or all years, therefore, rates are highly unstable should be used with caution

Note: Total of 707 cases (6.4% of all cases) with an unknown or other race were excluded from this graph for all years



6 Melanoma

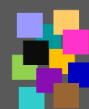
Figure 4: Five Year Relative Survival of Invasive Melanoma by Summary Stage for Diagnosis Years, 1995-2009



7

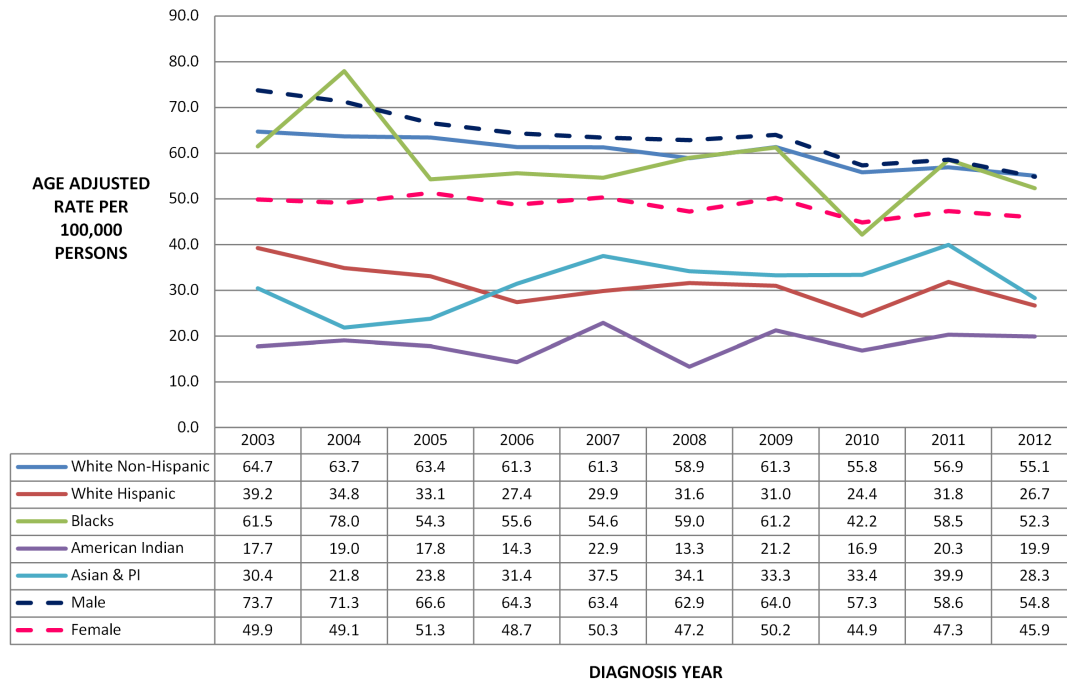
Lung Cancer

| | |
|---|----|
| Figure 1: Age Adjusted Incidence Rates..... | 27 |
| Figure 2: Age Adjusted Mortality Rates..... | 27 |
| Figure 3: Stage at Diagnosis by Race/Ethnicity..... | 28 |
| Figure 4: Survival by Summary Stage..... | 29 |



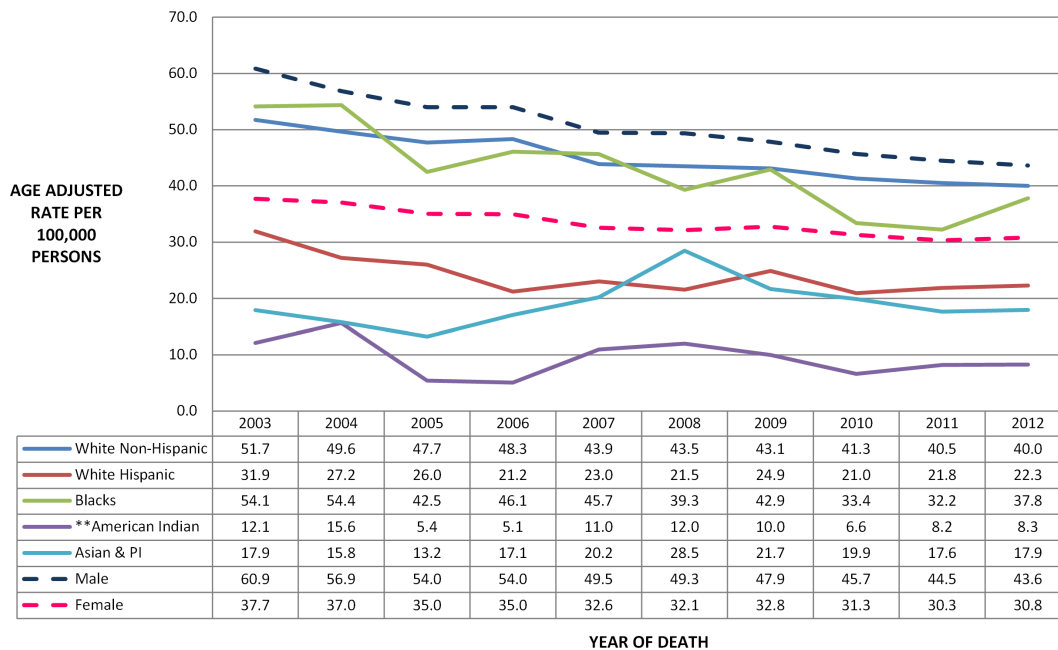
7 Lung Cancer

Figure 1: Age Adjusted Lung Cancer Incidence Rates Race/Ethnicity and Sex by Diagnosis Year, 2003-2012



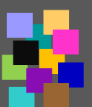
Note: Total of 137 cases (0.4% of all cases) with an unknown or other race were excluded from this graph for all years

Figure 2: Age Adjusted Lung Cancer Mortality Rates Race/Ethnicity and Sex by Diagnosis Year, 2003-2012



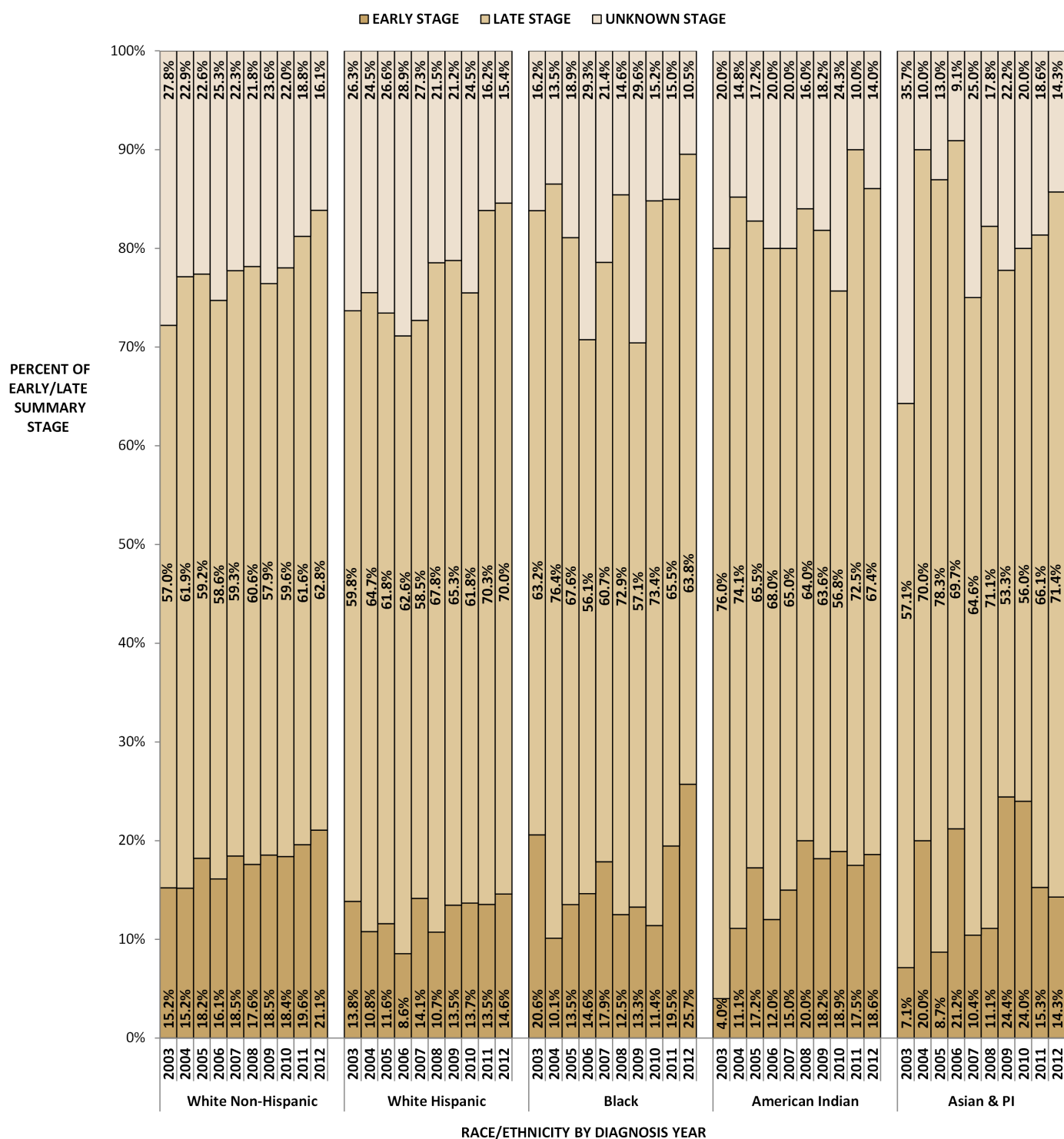
** Counts for these races are <10 for some or all years, therefore, rates are highly unstable should be used with caution

Note: Total of 79 cases (0.3% of all cases) with an unknown or other race were excluded from this graph for all years



7 Lung Cancer

Figure 3: *Early/Late Summary Stage Race/Ethnicity by Diagnosis Year: Lung Cancer 2003-2012



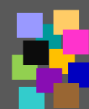
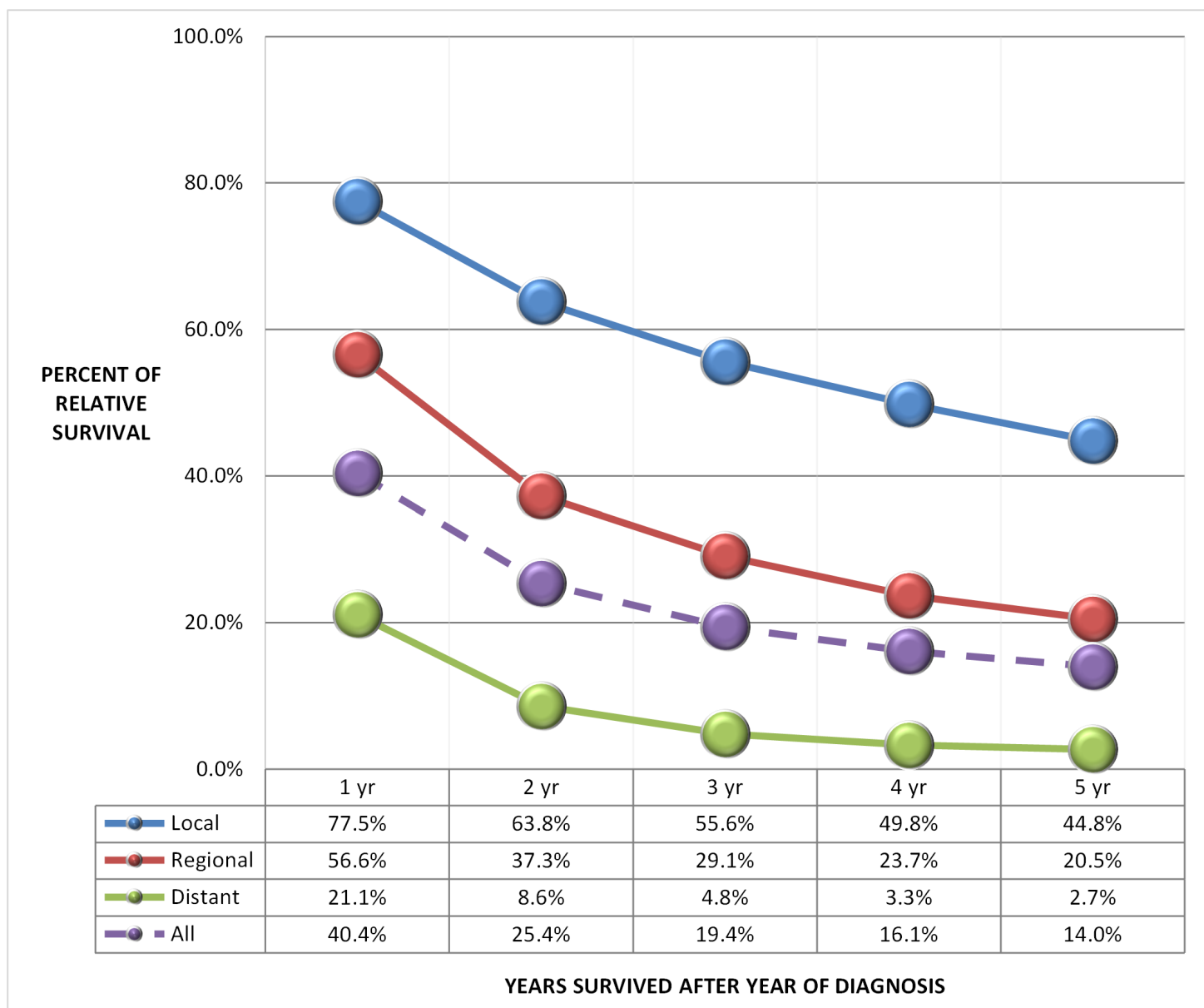
* Early Stage = In Situ and Local Stage; Late Stage= Regional and Distant using SEER Summary Stage

Note: Total of 137 cases (0.4% of all cases) with an unknown or other race were excluded from this graph for all years



7 Lung Cancer

Figure 4: Five Year Relative Survival of Invasive Lung Cancer by Summary Stage for Diagnosis Years, 1995-

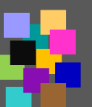




8

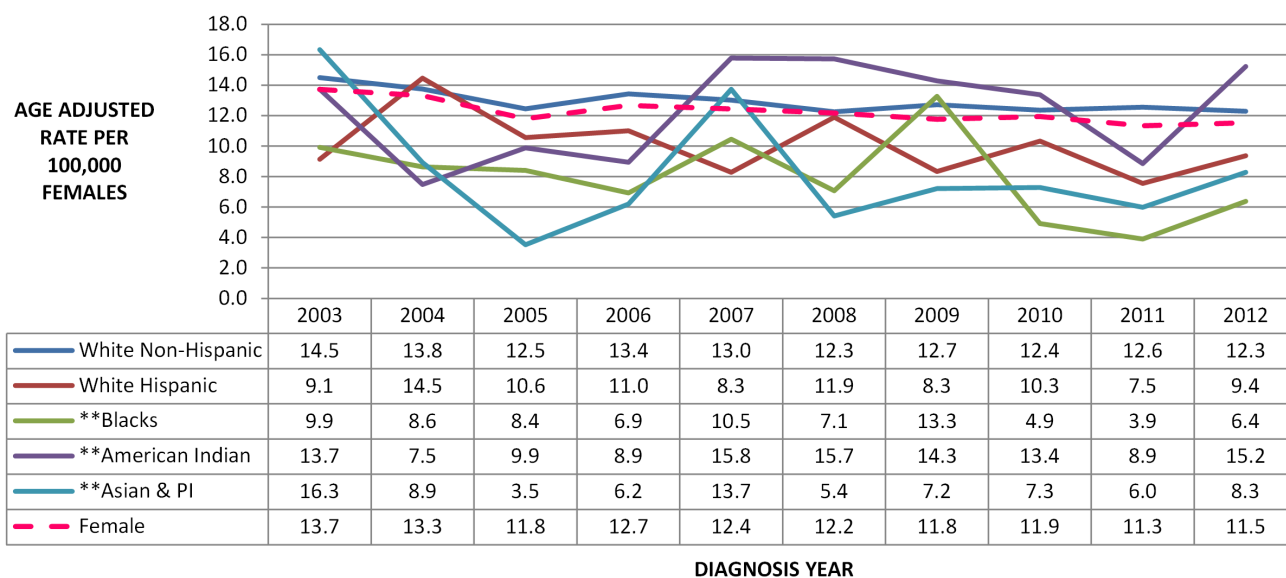
Ovarian Cancer

| | |
|---|----|
| Figure 1: Age Adjusted Incidence Rates..... | 31 |
| Figure 2: Age Adjusted Mortality Rates..... | 31 |
| Figure 3: Stage at Diagnosis by Race/Ethnicity..... | 32 |
| Figure 4: Survival by Summary Stage..... | 33 |



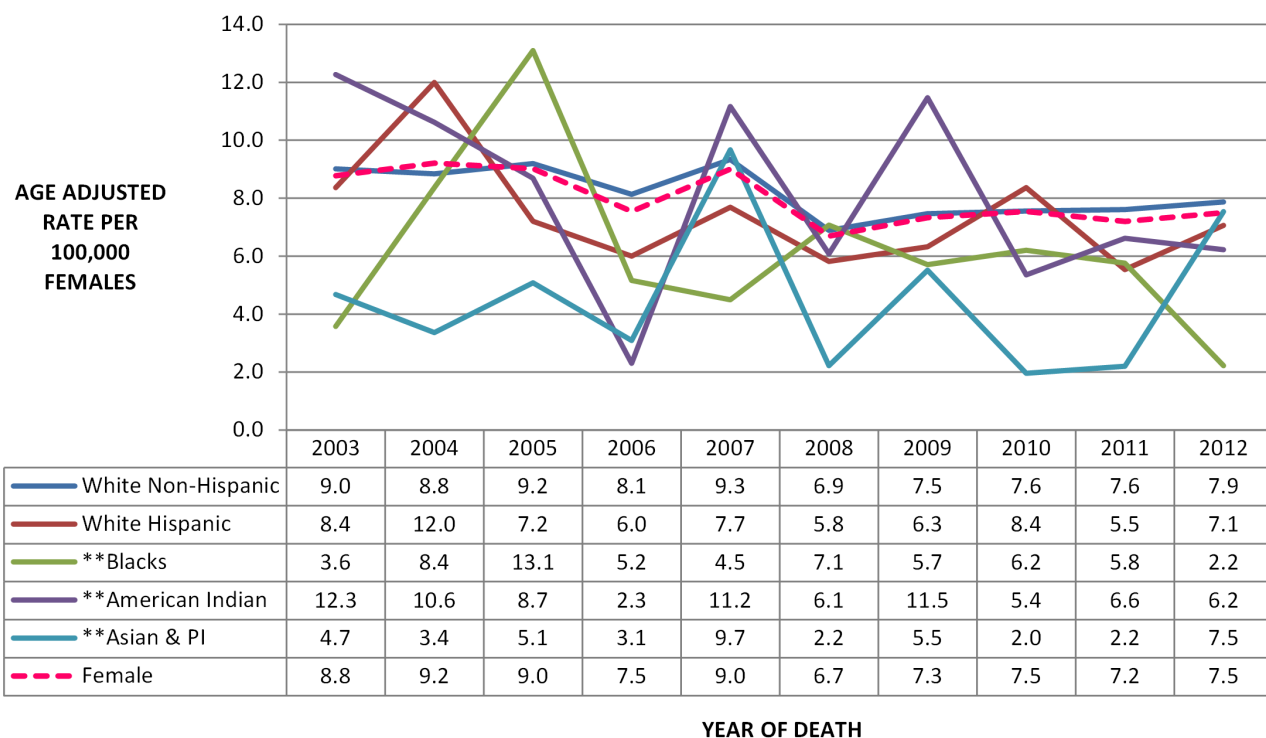
8 Ovarian Cancer

Figure 1: Age Adjusted Ovarian Cancer Incidence Rates Race/Ethnicity and Diagnosis Year, 2003-2012

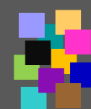


** Counts for these races are <10 for some or all years, therefore, rates are highly unstable should be used with caution
 Note: Total of 24 cases (0.6% of all cases) with an unknown or other race were excluded from this graph for all years

Figure 2: Age Adjusted Ovarian Cancer Mortality Rates Race/Ethnicity by Year of Death, 2003-2012

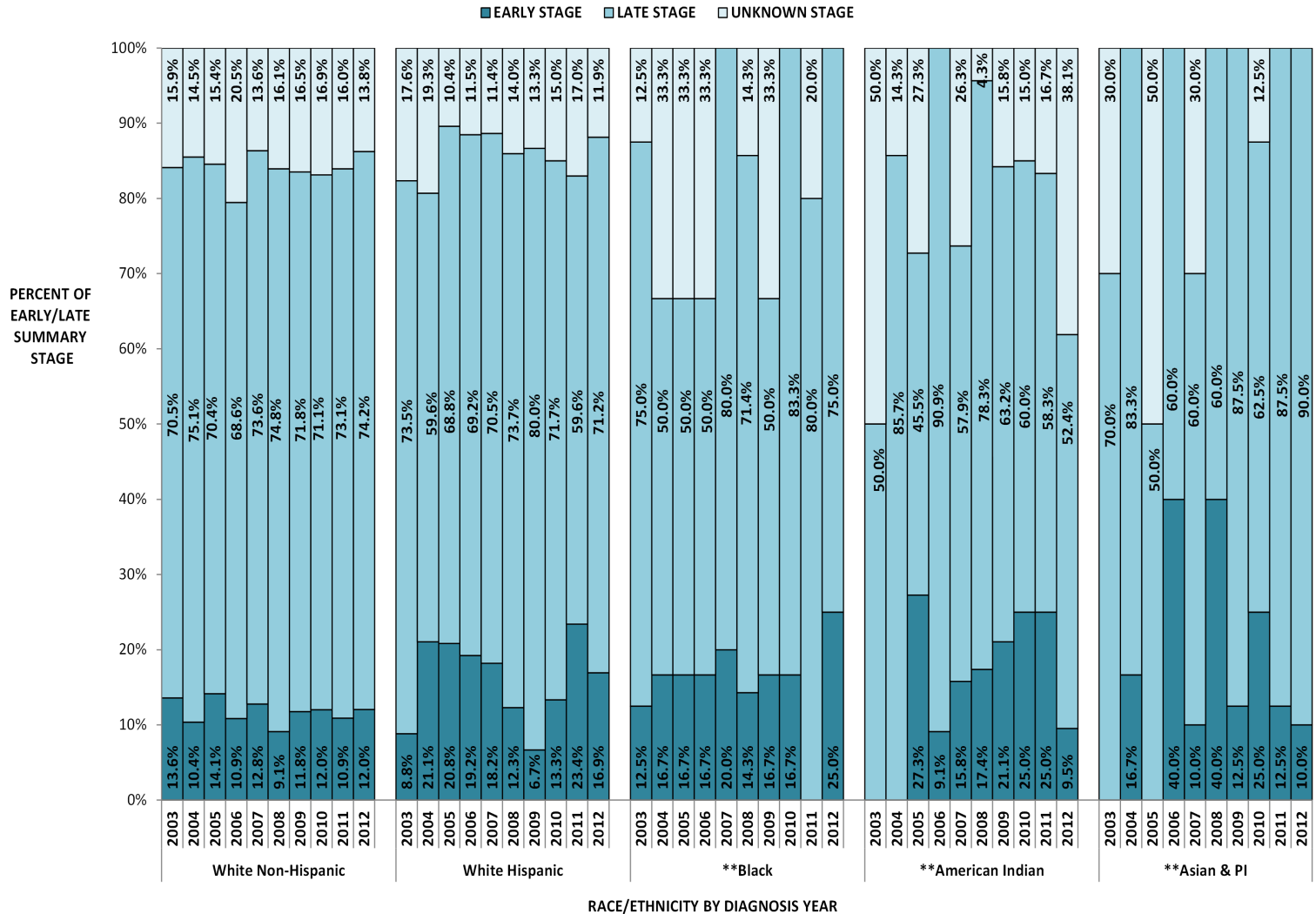


** Counts for these races are <10 for some or all years, therefore, rates are highly unstable should be used with caution
 Note: Total of 9 cases (0.3% of all cases) with an unknown or other race were excluded from this graph for all years



8 Ovarian Cancer

Figure 3: *Early/Late Summary Stage Race/Ethnicity by Diagnosis Year: Ovarian Cancer 2003-2012

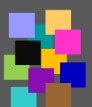


*Early Stage = In Situ and Local Stage; Late Stage= Regional and Distant using SEER Summary Stage

**Counts for these races are <10 for some or all years, therefore, rates are highly unstable should be used with caution

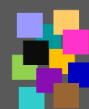
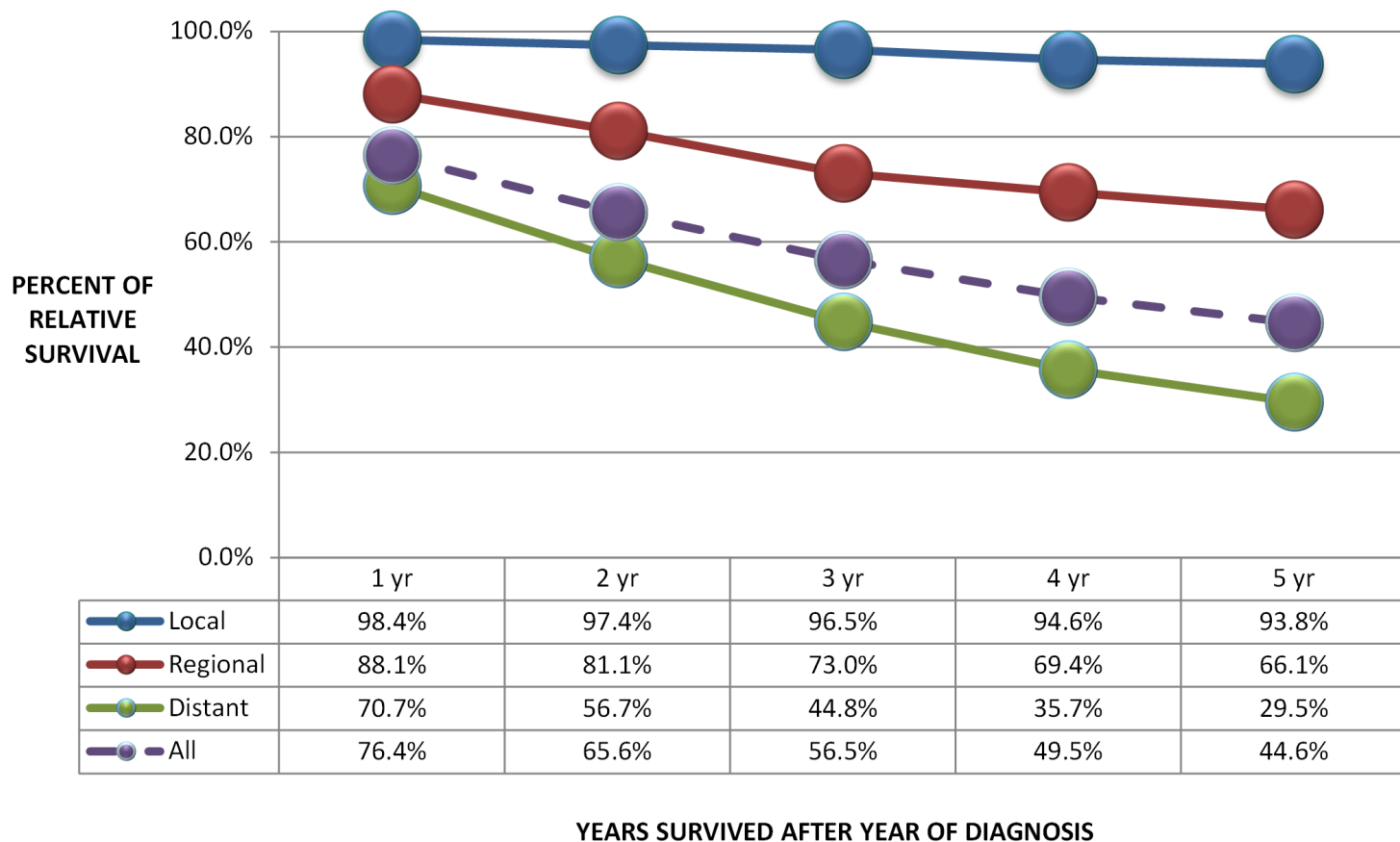
Note: Total percentage of each stage for each year may not equal 100% due to rounding

Total of 24 cases (0.6% of all cases) with an unknown or other race were excluded from this graph for all years



8 Ovarian Cancer

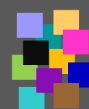
Figure 4: Five Year Relative Survival of Invasive Ovarian Cancer by Summary Stage for Diagnosis Years, 1995-2009



9

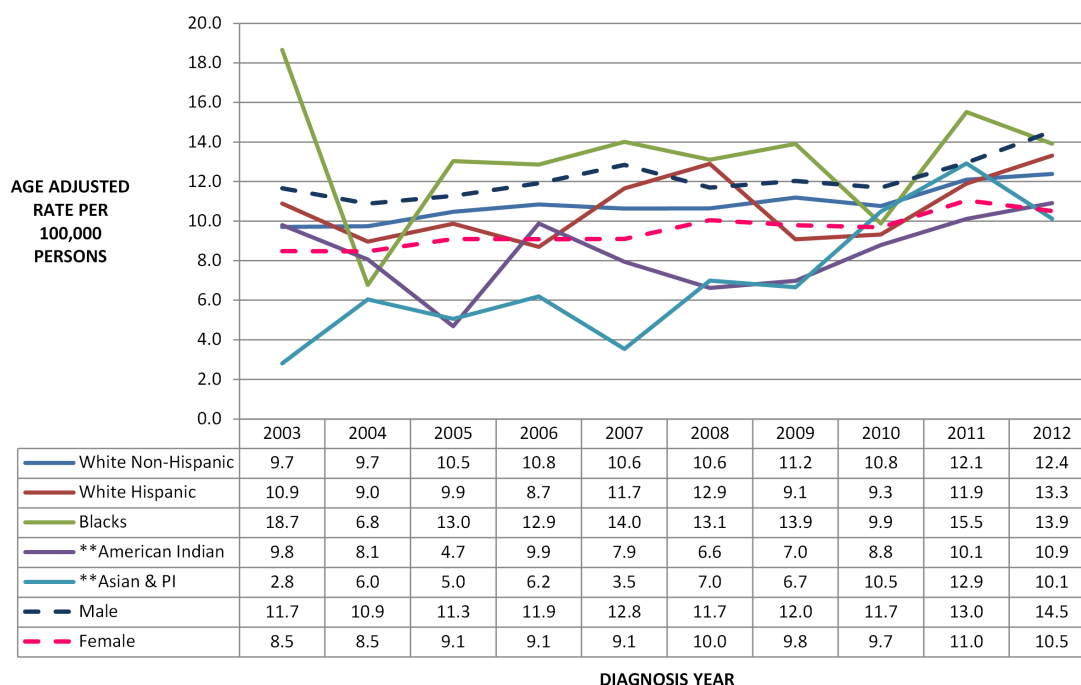
Pancreatic Cancer

| | |
|---|----|
| Figure 1: Age Adjusted Incidence Rates..... | 35 |
| Figure 2: Age Adjusted Mortality Rates..... | 35 |
| Figure 3: Stage at Diagnosis by Race/Ethnicity..... | 36 |
| Figure 4: Survival by Summary Stage..... | 37 |



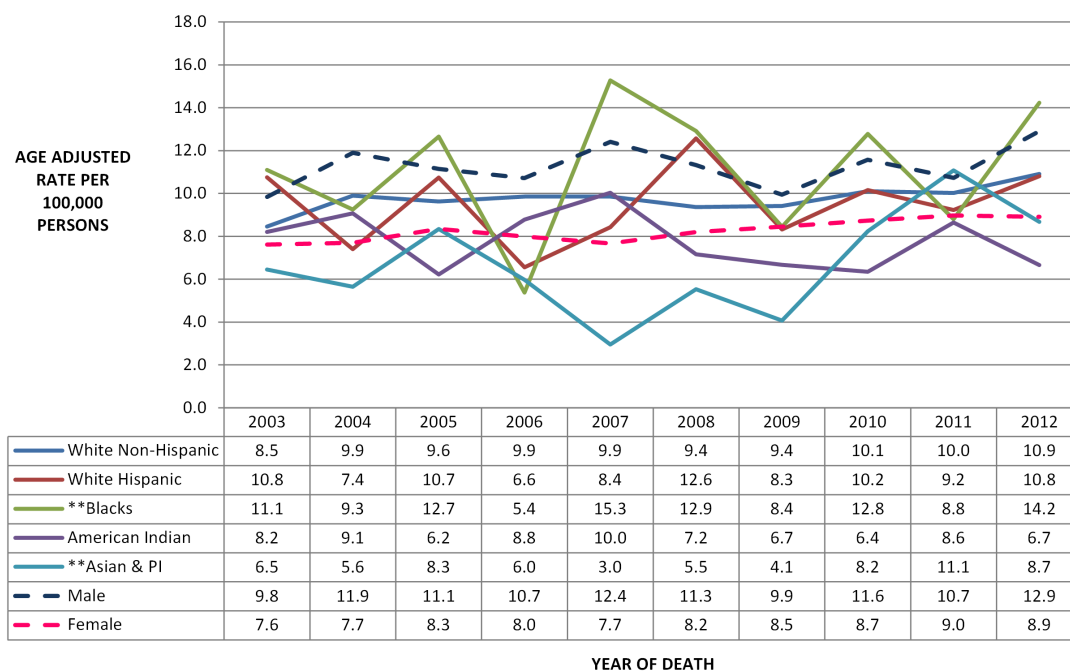
9 Pancreatic Cancer

Figure 1: Age Adjusted Pancreatic Cancer Incidence Rates Race/Ethnicity and Sex by Diagnosis Year, 2003-2012

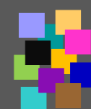


** Counts for these races are <10 for some or all years, therefore, rates are highly unstable should be used with caution
 Note: Total of 31 cases (0.4% of all cases) with an unknown or other race were excluded from this graph for all years

Figure 2: Age Adjusted Pancreatic Cancer Mortality Rates Race/Ethnicity and Sex by Year of Death, 2003-2012



** Counts for these races are <10 for some or all years, therefore, rates are highly unstable should be used with caution
 Note: Total of 9 cases (0.3% of all cases) with an unknown or other race were excluded from this graph for all years



9 Pancreatic Cancer

Figure 3: *Early/Late Summary Stage Race/Ethnicity by Diagnosis Year: Pancreatic Cancer, 2003-2012

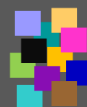


*Early Stage = In Situ and Local Stage; Late Stage= Regional and Distant using SEER Summary Stage

**Counts for these races are <10 for some or all years, therefore, rates are highly unstable should be used with caution

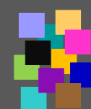
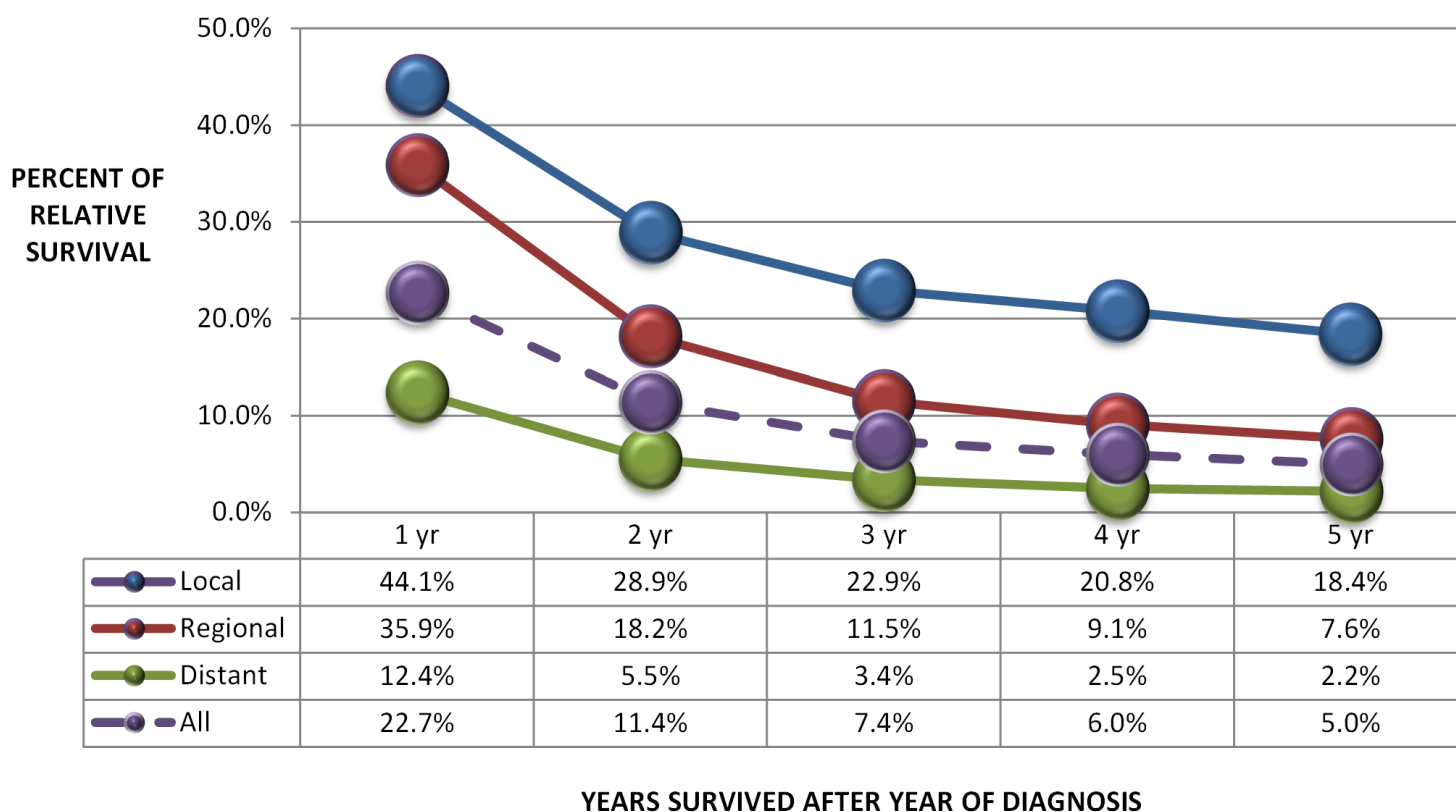
Note: Total percentage of each stage for each year may not equal 100% due to rounding

Total of 31 cases (0.4% of all cases) with an unknown or other race were excluded from this graph for all years



9 Pancreatic Cancer

Figure 4: Five Year Relative Survival of Invasive Pancreatic Cancer by Summary Stage for Diagnosis Years, 1995-2009

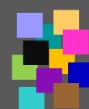




10

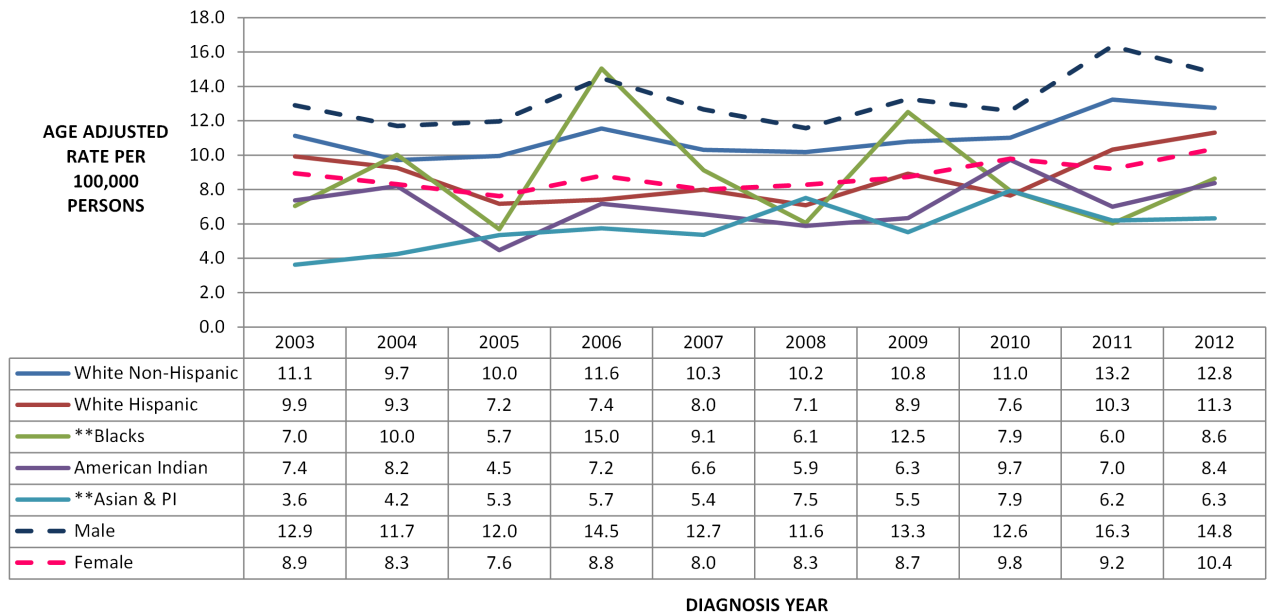
Leukemia

| | |
|--|----|
| Figure 1: Age Adjusted Incidence Rates..... | 39 |
| Figure 2: Age Adjusted Mortality Rates..... | 39 |
| Figure 3: Proportion by Age and Diagnosis..... | 40 |
| Figure 4: Survival by Summary Stage..... | 40 |



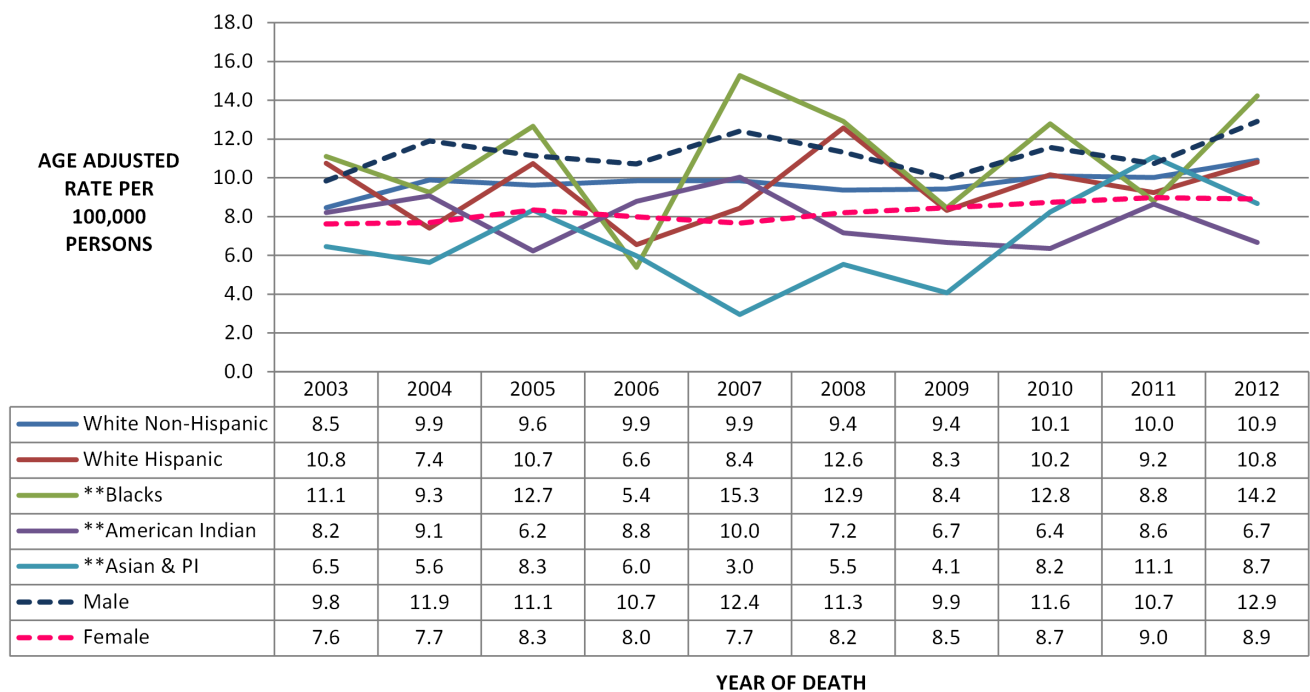
10 Leukemia

Figure 1: Age Adjusted Leukemia Incidence Rates Race/Ethnicity and Sex by Diagnosis Year, 2003-2012

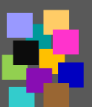


** Counts for these races are <10 for some or all years, therefore, rates are highly unstable should be used with caution
 Note: Total of 139 cases (2.0% of all cases) with an unknown or other race were excluded from this graph for all years

Figure 2: Age Adjusted Leukemia Mortality Rates Race/Ethnicity and Sex by Year of Death, 2003-2012



** Counts for these races are <10 for some or all years, therefore, rates are highly unstable should be used with caution
 Note: Total of 13 cases (0.3% of all cases) with an unknown or other race were excluded from this graph for all years



10 Leukemia

Figure 3: Proportion of Leukemia Diagnosis by Age Group and Diagnosis Year, 2003-2012

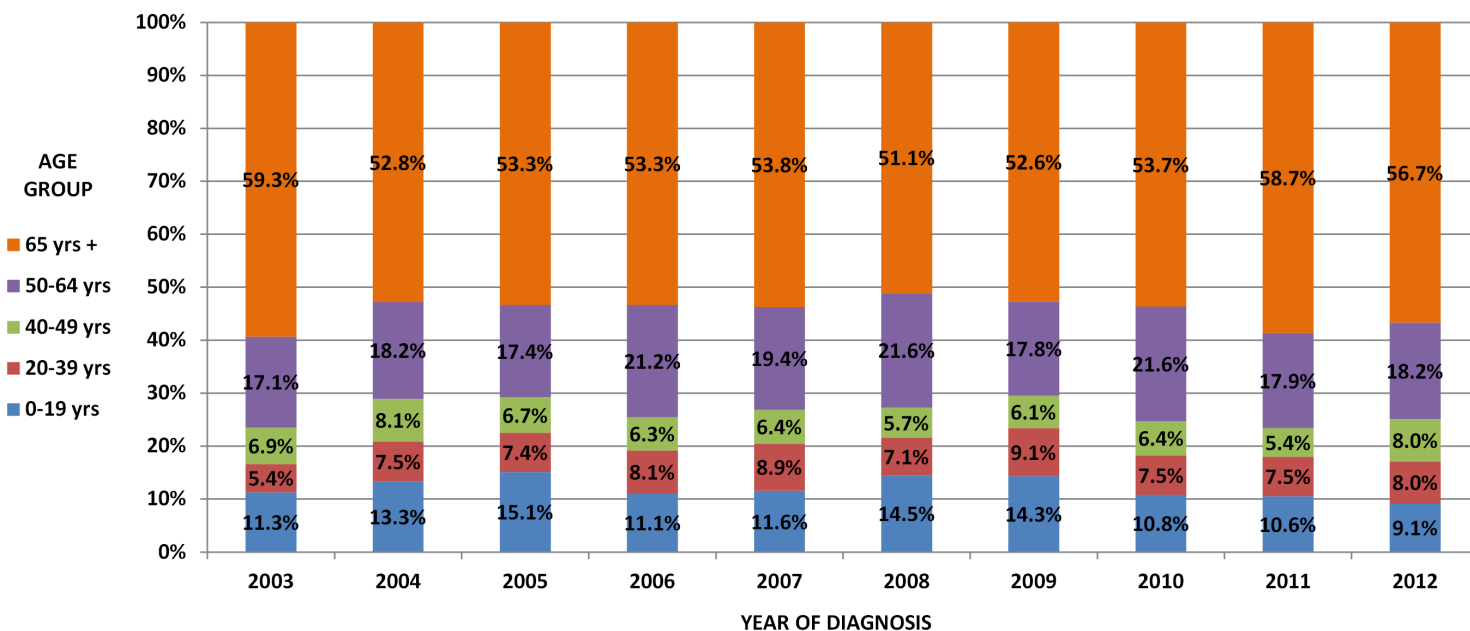
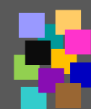
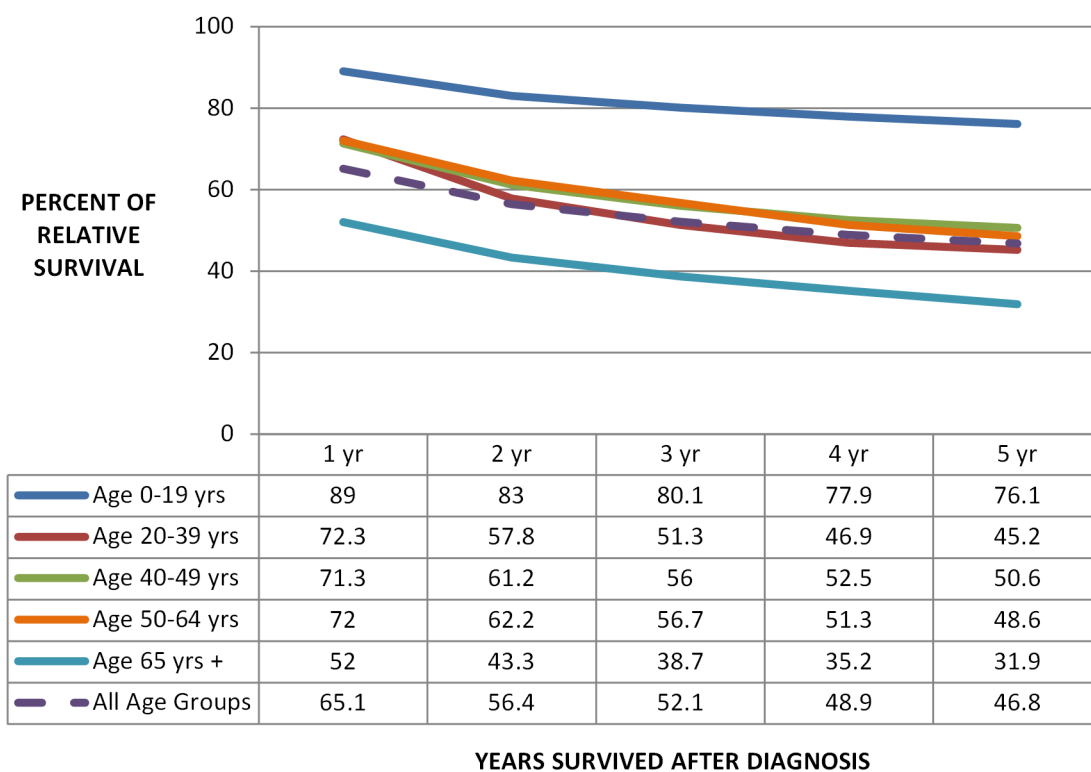


Figure 4: Five Year Relative Survival of Leukemia by Age Group for Diagnosis Years, 1995-2009



11

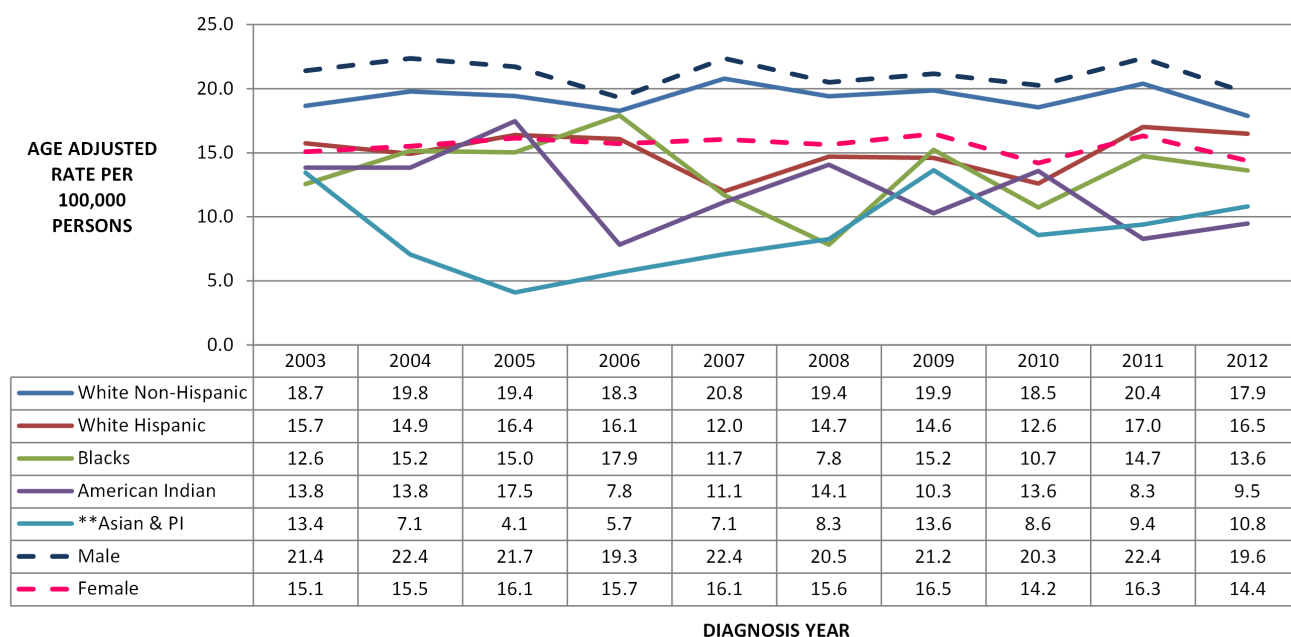
Lymphoma

| | |
|---|----|
| Figure 1: Age Adjusted Incidence Rates..... | 42 |
| Figure 2: Age Adjusted Mortality Rates..... | 42 |
| Figure 3: Stage at Diagnosis by Race/Ethnicity..... | 43 |
| Figure 4: Survival by Summary Stage..... | 44 |



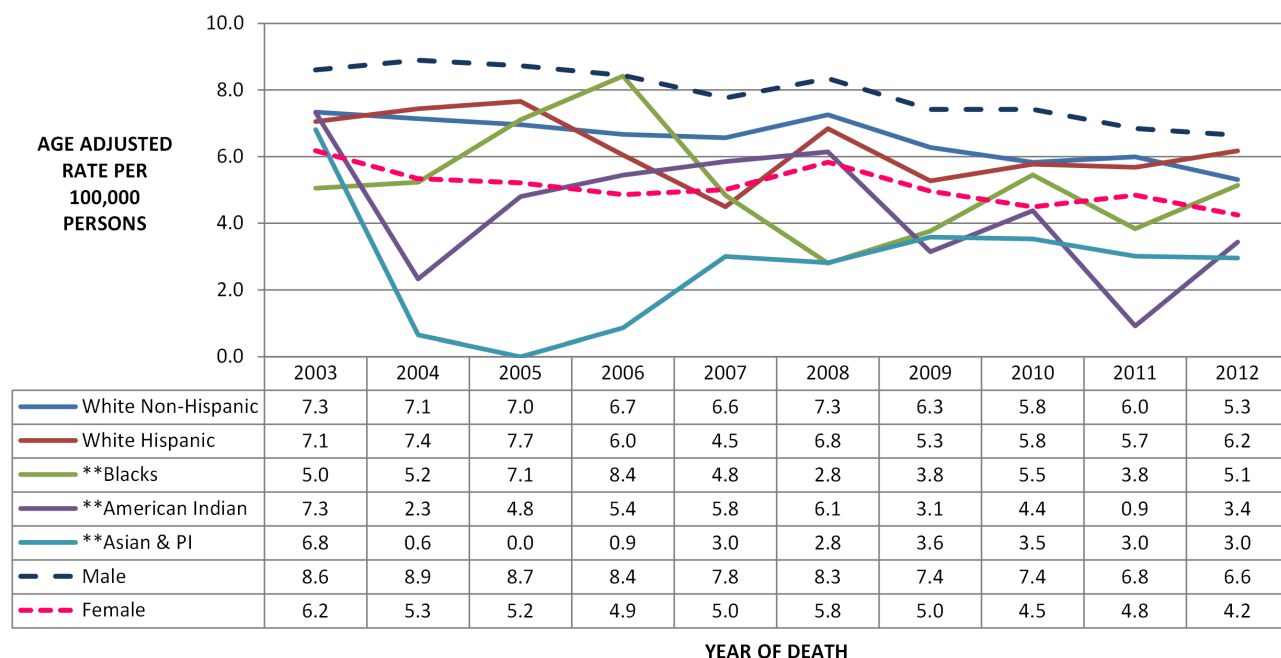
11 Lymphoma

Figure 1: Age Adjusted Lymphoma Incidence Rates Race/Ethnicity and Sex by Diagnosis Year, 2003-2012

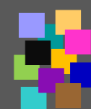


** Counts for these races are <10 for some or all years, therefore, rates are highly unstable should be used with caution
 Note: Total of 187 cases (1.6% of all cases) with an unknown or other race were excluded from this graph for all years

Figure 2: Age Adjusted Lymphoma Mortality Rates Race/Ethnicity and Sex by Year of Death, 2003-2012

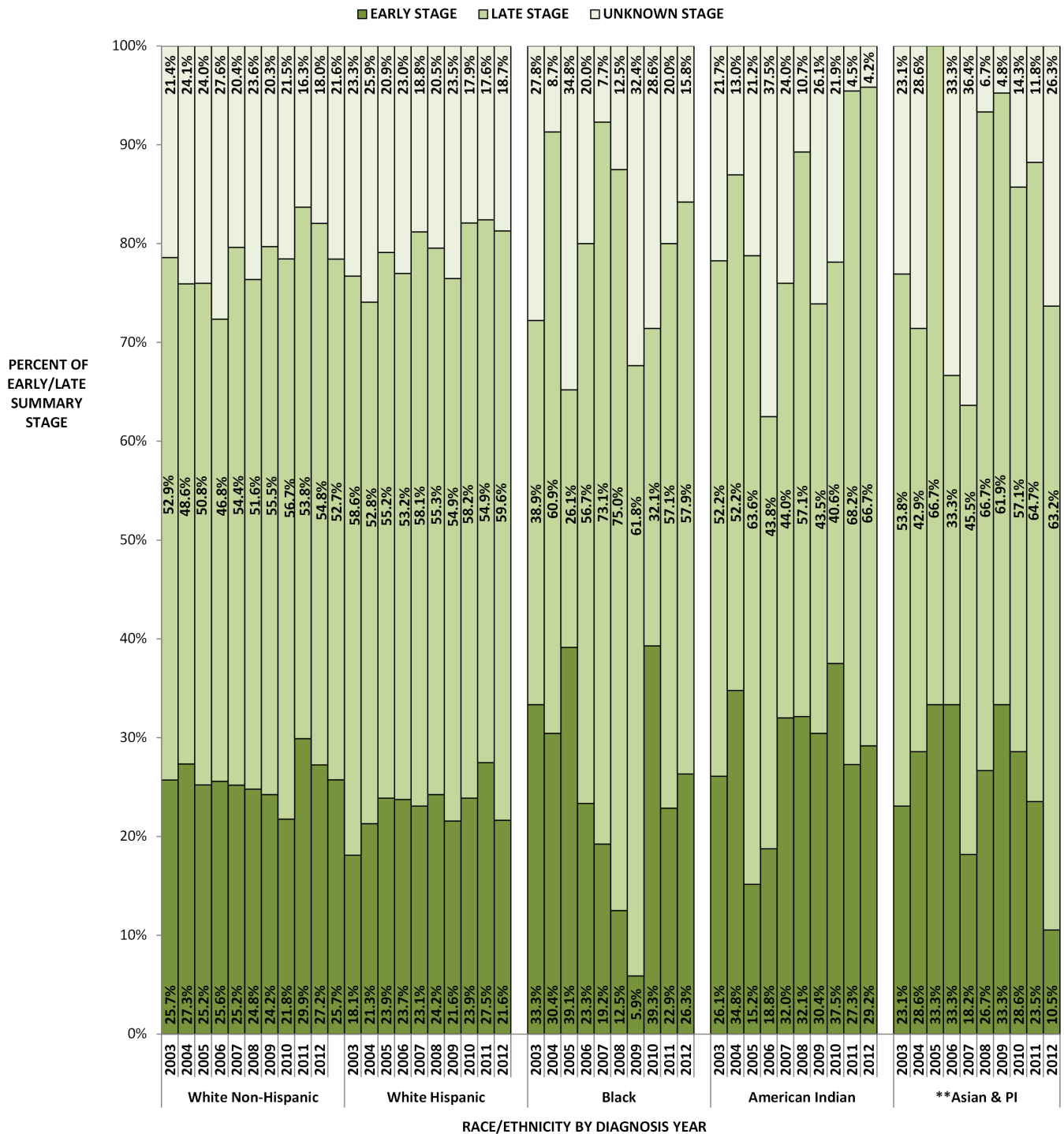


** Counts for these races are <10 for some or all years, therefore, rates are highly unstable should be used with caution
 Note: Total of 14 cases (0.3% of all cases) with an unknown or other race were excluded from this graph for all years



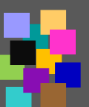
11 Lymphoma

Figure 3: *Early/Late Summary Stage Race/Ethnicity by Diagnosis Year: Lymphoma, 2003-2012



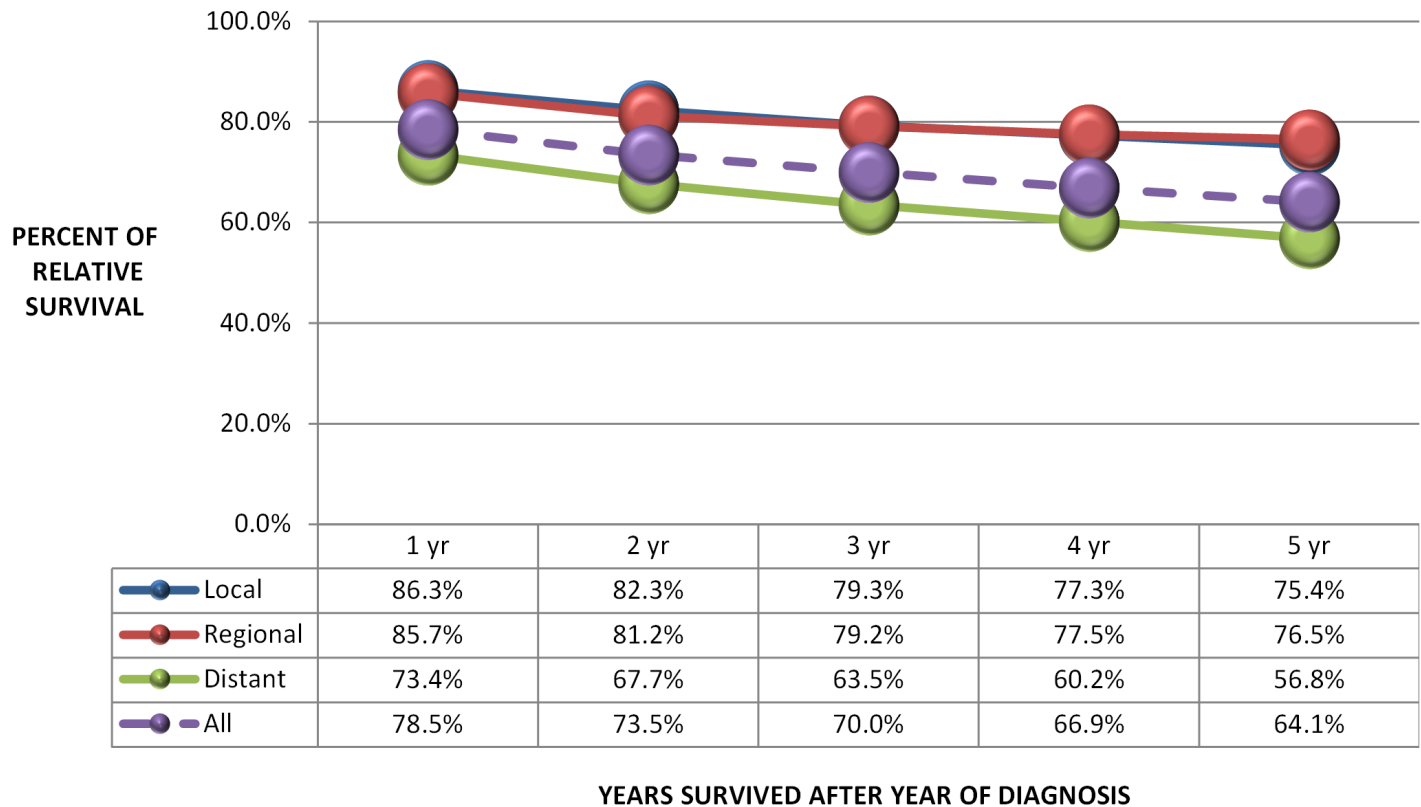
*Early Stage = In Situ and Local Stage; Late Stage= Regional and Distant using SEER Summary Stage

**Counts for these races are <10 for some or all years, therefore, rates are highly unstable should be used with caution



11 Lymphoma

Figure 4: Five Year Relative Survival of Lymphoma by Summary Stage for Diagnosis Years, 1995-2009



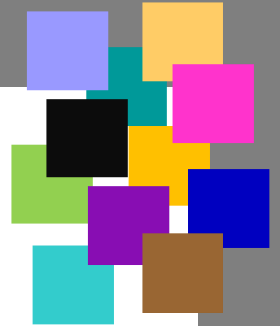
Arizona Department of Health Services

Arizona Cancer Registry

150 North 18th Avenue

Phoenix, Arizona 85007

www.azdhs.gov



Arizona Cancer

PREVENTION & CONTROL

More People Will Live Longer