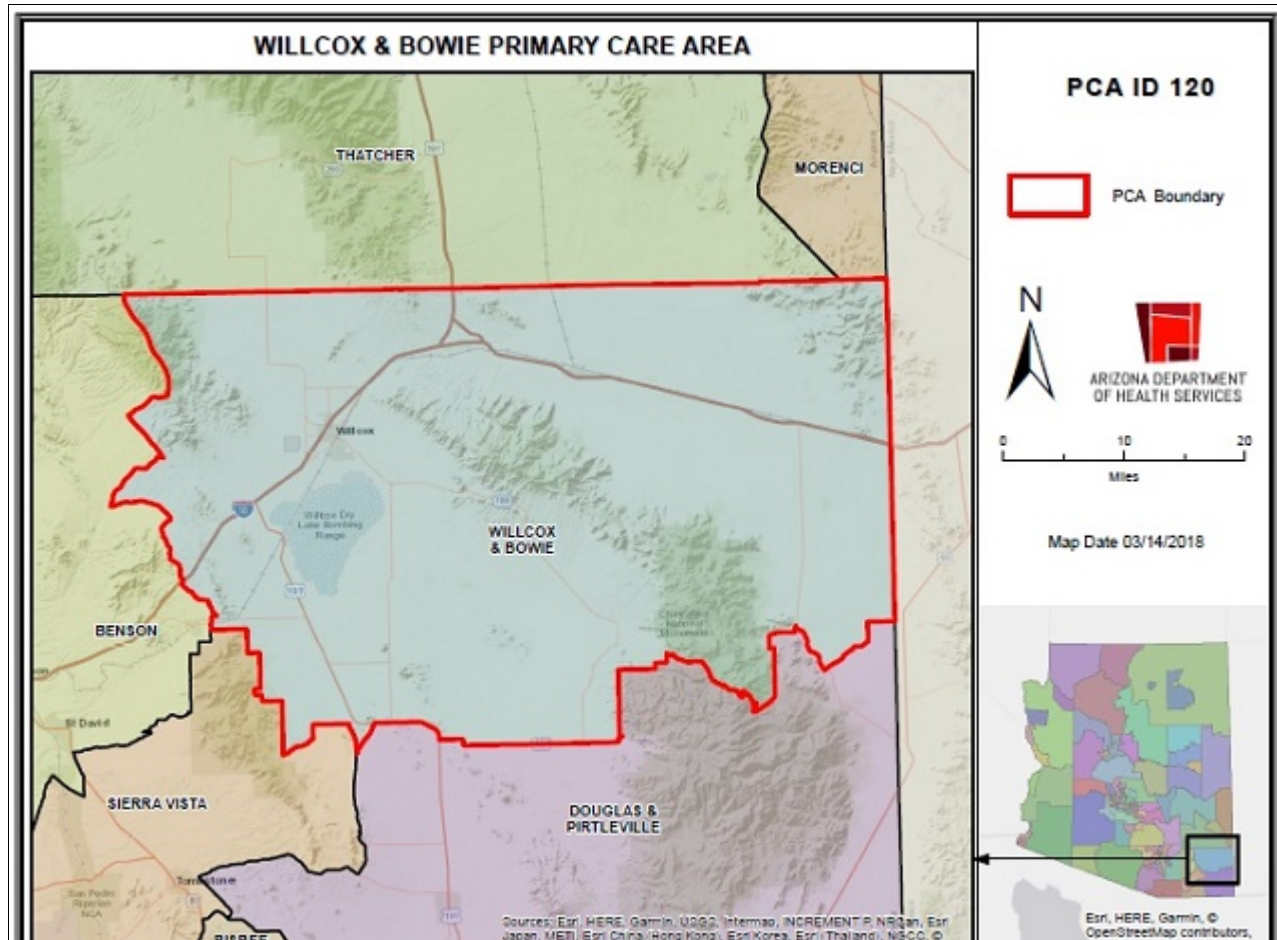


Willcox & Bowie Primary Care Area (PCA) 2021 STATISTICAL PROFILE

For definitions and sources of data used in these profiles, see:

<http://www.azdhs.gov/documents/prevention/health-systems-development/data-reports-maps/reports/datadocu.pdf>

DESCRIPTION OF AREA	PCA Number	120
	Major Population Center	Willcox
	County	COCHISE
	Health Planning Region	2
	Primary Care Score	38
	Rural Code Designation:	FRONTIER
	Special Tax District?	No
	State House Legislative District	19
	Designated as AzMUA?	Yes
	Designated as Primary Care HPSA	P Low Inc., (Willcox & Bowie)
	Designated as Federal MUA/P	61.00, MUA, (Bowie/Wilcox)
	Next Nearest Provider	Dragoon
	2nd Nearest Provider	Pearce
	Travel Distance to Next Nearest Provider	25.01 miles
	Travel Distance to 2nd Nearest Provider...	30.66 miles



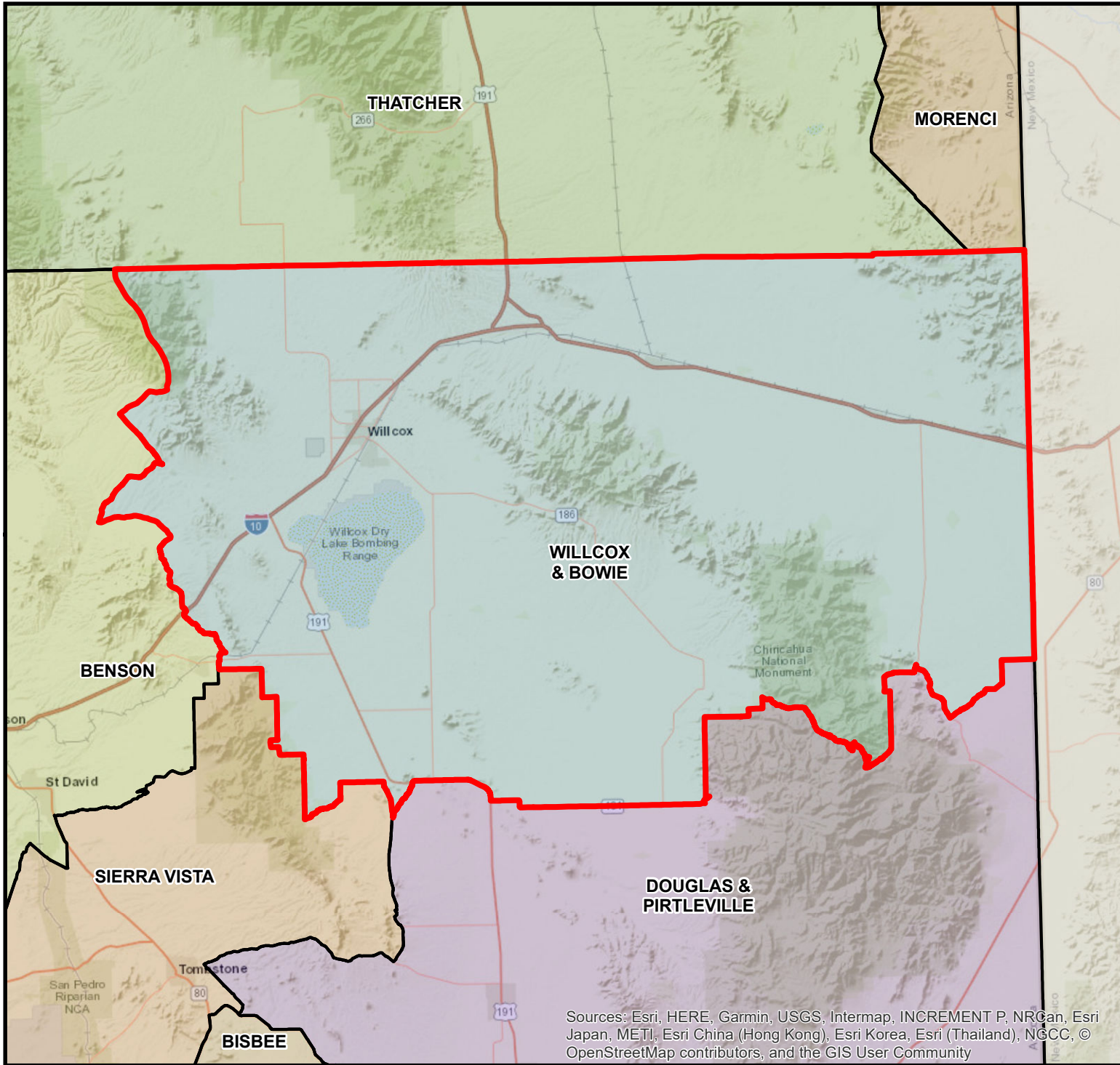
DEMOGRAPHICS	Willcox & Bowie	COUNTY	HEALTH PLANNING REGION	ARIZONA
POPULATION	10,890	126,463	1,281,867	7,285,370
Population Density	5.2	20.3	55.4	63.9
Persons By Age				
0-14	2,136	22,805	225,818	1,384,121
15-19	546	7,794	84,889	485,151
20-44	3,324	37,718	414,858	2,400,824
45-64	2,741	30,622	298,138	1,745,588
65-84	2,326	25,289	223,166	1,142,268
85 +	276	2,917	28,193	139,201
Race/Ethnicity				
White	90.1%	81.5%	77.7%	75.8%
American Indian	1.5%	1.2%	3.2%	4.0%
Black	0.8%	4.4%	3.5%	4.2%
Asian/Pacific Islander	0.6%	2.4%	2.7%	3.1%
Other	7.0%	10.5%	12.9%	12.9%
Hispanic	39.2%	33.6%	37.0%	30.5%
Communities of Color	45.1%	45.6%	49.6%	46.6%
Gender				
Females	47.9%	49.1%	50.5%	50.3%
Males	52.1%	50.9%	49.5%	49.7%
Single Parent Families	15.1%	23.4%	28.5%	26.9%
Female Headed Households	19.6%	27.7%	28.4%	26.4%
Disability Population	17.9%	17.6%	15.3%	13.2%
Speak Other Than English at Home	32.0%	27.5%	29.1%	26.7%
INCOME				
Population below 100% FPL	12.7%	15.2%	16.2%	14.1%
Population below 200% FPL	41.6%	38.5%	36.8%	33.0%
Median Household Income	\$39,991	\$47,522	\$55,710	\$62,115
Children <12 in Poverty	11.5%	23.1%	23.2%	20.7%
EDUCATION				
Less Than 9th Grade Education	7.9%	4.5%	4.4%	5.0%
9th-12th Grade, No Diploma	3.7%	6.4%	7.0%	7.0%
High School Graduate	33.9%	23.9%	22.3%	23.8%
Some College	26.3%	27.8%	25.3%	24.9%
College or Professional Degree Holder	26.1%	36.9%	40.9%	39.1%
MISCELLANEOUS				
Overnight Tourist Visits	49,429	575,383	5,800,084	49,599,807
Unemployed	11.6%	13.9%	12.1%	10.0%
"Uninsured" Births	2.2%	4.4%	3.7%	2.3%
Medicare Beneficiaries	97.3%	96.6%	97.2%	96.3%
Medically Uninsured	12.1%	7.8%	8.8%	10.6%
Transportation Score	101	107	103	113

RESOURCES	Willcox & Bowie	COUNTY	HEALTH PLANNING REGION	ARIZONA
FACILITIES				
General Hospitals	Yes	4	16	71
Hospital Beds/1000 Residents	2.2	1.3	2.4	1.9
Designated as Sole Community Provider?	Yes	4	16	56
Specialty Beds	0	0	523	3,645
Skilled Nursing Facilities	0	3	24	102
Nursing Beds	0	268	2,923	11,632
SERVICES				
Licensed Home Health Agencies	0	4	35	179
Ambulatory Care Sites Type	A, B, D	A, B, C, D, E	A, B, C, D, E	A,B,C,D,E
Licensed Pharmacies	3	26	244	1,332
Certified Ambulance Services	1	10	32	106
PERSONNEL				
Primary Care Providers	5.0	112	1,884	9,751
Ratio-Population:Provider	2,178 :1	1,129:1	680 :1	747 :1
Nurse Practitioners	16	327	2,158	9,932
Physician Assistants	1	24	303	3,049
Registered Nurses	76	1,158	14,209	80,111
Midwives	0	5	66	312
Dentists	3	47	666	4,325
UTILIZATION				
AMBULATORY CARE SENSITIVE CONDITIONS				
ACSs/1000 Residents Age <65	59.8	52.7	34.9	34.5
Points Above/Below (-) Statewide Average	25.3	18.1	0.4	***
HOSPITALIZATION				
Inpatient Days/1000 Residents	681	600	571	570
Inpatient Days/1000 by Age Group:				
0-14 yrs	327	331	330	320
15-19 yrs	203	282	277	285
20-44 yrs	252	333	378	400
45-64 yrs	565	589	637	611
65-84 yrs	1,526	1,200	1,059	1,122
85+ yrs	1,901	1,692	1,771	1,815
Leading Diagnosis	Acute upper respiratory i			
Leading Procedure	Introduction of Serum, Toxoid and Vaccine into Muscle, P			
(Non-maternity related)				
*** Not Applicable, ++ Insufficient Data, ## Not Available				

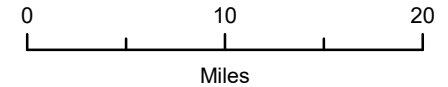
HEALTH STATUS	Willcox & Bowie	COUNTY	HEALTH PLANNING REGION	ARIZONA
INFANT MORTALITY RATE	++	6.2	5.5	5.7
MORTALITY, LEADING CAUSE OF DEATH				
Infant	++			
Child (1-14)	++			
Adolescent (15-19)	++			
Young Adult (20-44)				Accidental poisoning by and exposure to narcotics
Mid Age (45-64)				Chronic ischaemic heart disease
Elderly (65-84)				Cardiac arrest
Aged (85+)				Cardiac arrest
PERCENT PREMATURE MORTALITY	54.5%	55.7%	52.9%	54.9%
NATALITY				
Fertility Rate/1000 Females 15-44 yrs	61.5	66.6	59.1	61.4
Birth Rate/1000 Residents	10.3	11.2	11.0	11.8
0-4 Prenatal Care Visits/1000 Births	172.5	130.5	117.6	66.5
Prenatal Care Began:				
None	7.7%	6.9%	5.1%	5.6%
Trimester One	50.5%	59.4%	64.6%	70.4%
Trimester Two	29.9%	23.3%	21.5%	18.1%
Trimester Three	11.7%	10.1%	8.6%	5.9%
Unknown	0.2%	0.3%	0.2%	0.0%
Low-weight Births/1000 Live Births	79.7	78.8	75.5	72.8
Teen Births/1000 Females 14-19 yrs	26.5	24.0	20.1	20.2
Area Location IDs:				
Census Tracts: 040030001.01, 040030001.02, 040030002.01, 040030002.02, 040030002.03, 040030005.01				
Other Places in area:				
Bowie, Bowie Junction, Buckeye Mill, Chiricahua Indian Reservation, Cochise, Dos Cabezas, Galeyville, Kansas Settlement, Luzena, Manzano, Mineral Park, Olga, Pearce, Rancho Sacatal, Raso, San Simon, Sunizona, Sunsites, Vanar, Wheeler Place, Willcox, Yellow Hammer Mill				
*** Not Applicable, ++ Insufficient Data, ## Not Available				

WILLCOX & BOWIE PRIMARY CARE AREA

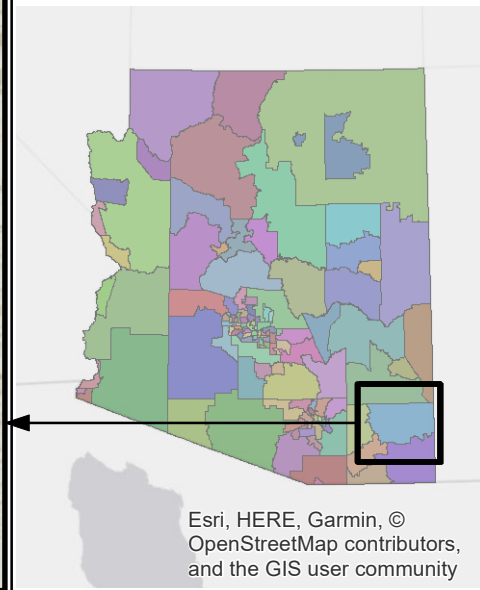
PCA ID 120



ARIZONA DEPARTMENT OF HEALTH SERVICES



Map Date 03/14/2018



Sources: Esri, HERE, Garmin, USGS, Intermap, INCREMENT P, NRCan, Esri Japan, METI, Esri China (Hong Kong), Esri Korea, Esri (Thailand), NGCC, © OpenStreetMap contributors, and the GIS User Community

Esri, HERE, Garmin, © OpenStreetMap contributors, and the GIS user community