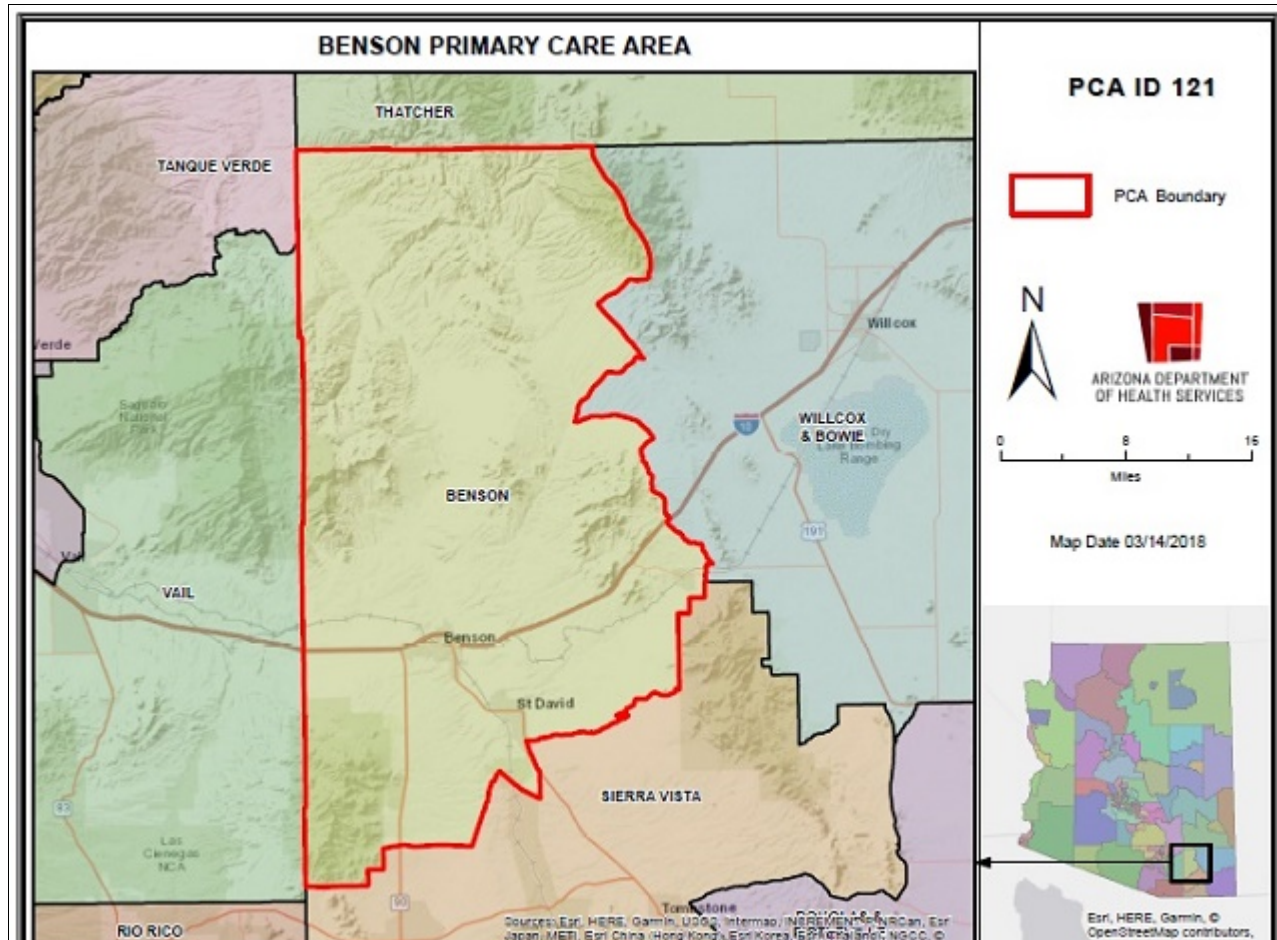


Benson Primary Care Area (PCA) 2021 STATISTICAL PROFILE

For definitions and sources of data used in these profiles, see:

<http://www.azdhs.gov/documents/prevention/health-systems-development/data-reports-maps/reports/datadocu.pdf>

DESCRIPTION OF AREA	PCA Number	121
	Major Population Center	Benson
	County	COCHISE
	Health Planning Region	2
	Primary Care Score	24
	Rural Code Designation:	RURAL
	Special Tax District?	A
	State House Legislative District	19
	Designated as AzMUA?	Yes
	Designated as Primary Care HPSA	P Low Inc., (Benson)
Designated as Federal MUA/P		58.93, MUA, (Sierra Vista/Benson)
Next Nearest Provider	Saint David	
2nd Nearest Provider	Dragoon	
Travel Distance to Next Nearest Provider	7.59 miles	
Travel Distance to 2nd Nearest Provider...	17.3 miles	

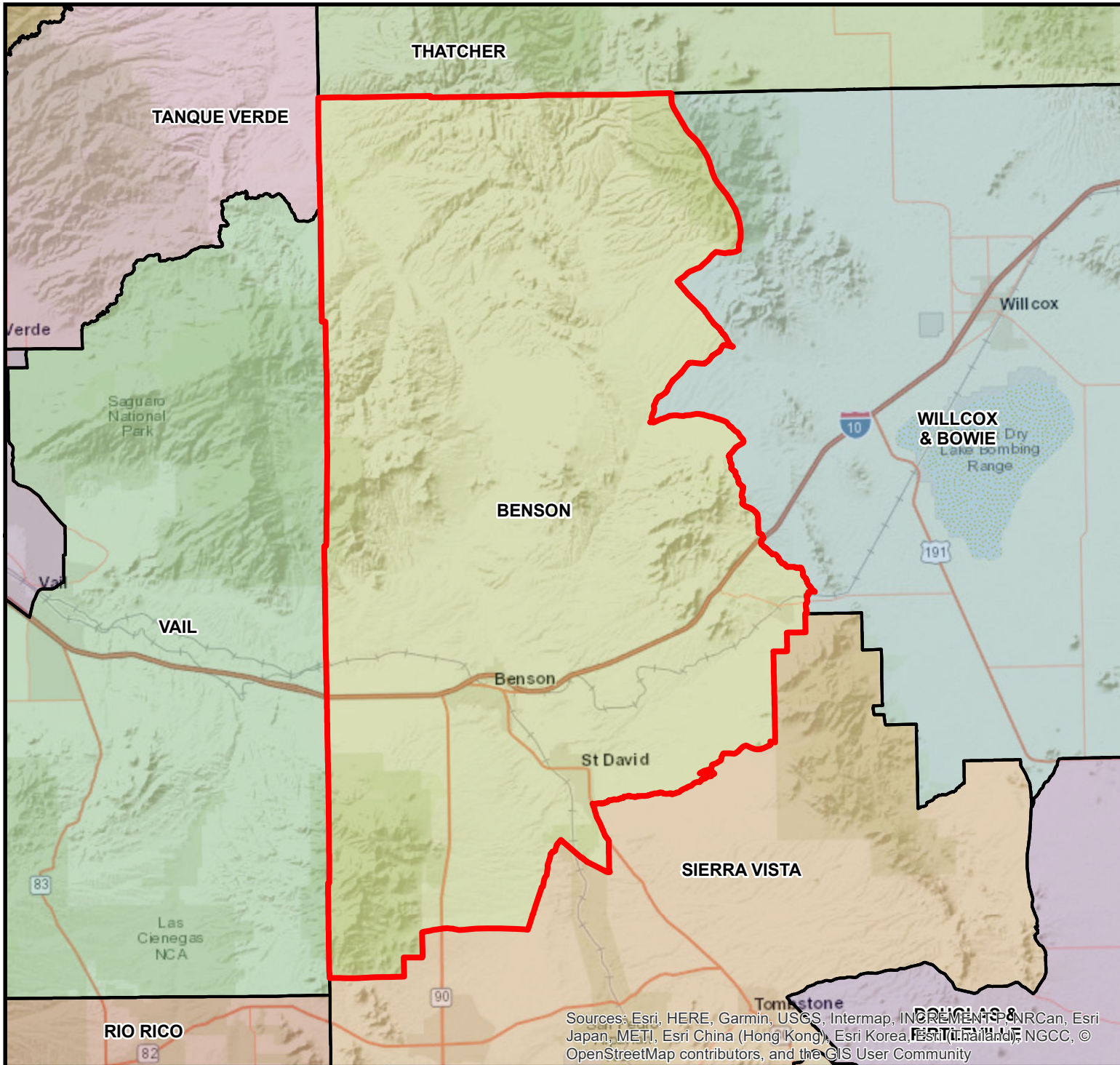


DEMOGRAPHICS	Benson	COUNTY	HEALTH PLANNING REGION	ARIZONA
POPULATION	12,542	126,463	1,281,867	7,285,370
Population Density	13.6	20.3	55.4	63.9
Persons By Age				
0-14	1,686	22,805	225,818	1,384,121
15-19	532	7,794	84,889	485,151
20-44	2,653	37,718	414,858	2,400,824
45-64	2,736	30,622	298,138	1,745,588
65-84	3,359	25,289	223,166	1,142,268
85 +	392	2,917	28,193	139,201
Race/Ethnicity				
White	84.5%	81.5%	77.7%	75.8%
American Indian	1.0%	1.2%	3.2%	4.0%
Black	0.5%	4.4%	3.5%	4.2%
Asian/Pacific Islander	0.8%	2.4%	2.7%	3.1%
Other	13.2%	10.5%	12.9%	12.9%
Hispanic	14.6%	33.6%	37.0%	30.5%
Communities of Color	23.4%	45.6%	49.6%	46.6%
Gender				
Females	48.6%	49.1%	50.5%	50.3%
Males	51.4%	50.9%	49.5%	49.7%
Single Parent Families	22.4%	23.4%	28.5%	26.9%
Female Headed Households	26.4%	27.7%	28.4%	26.4%
Disability Population	25.5%	17.6%	15.3%	13.2%
Speak Other Than English at Home	10.1%	27.5%	29.1%	26.7%
INCOME				
Population below 100% FPL	15.2%	15.2%	16.2%	14.1%
Population below 200% FPL	35.2%	38.5%	36.8%	33.0%
Median Household Income	\$49,985	\$47,522	\$55,710	\$62,115
Children <12 in Poverty	27.2%	23.1%	23.2%	20.7%
EDUCATION				
Less Than 9th Grade Education	4.9%	4.5%	4.4%	5.0%
9th-12th Grade, No Diploma	1.7%	6.4%	7.0%	7.0%
High School Graduate	30.3%	23.9%	22.3%	23.8%
Some College	28.1%	27.8%	25.3%	24.9%
College or Professional Degree Holder	34.7%	36.9%	40.9%	39.1%
MISCELLANEOUS				
Overnight Tourist Visits	57,053	575,383	5,800,084	49,599,807
Unemployed	6.4%	13.9%	12.1%	10.0%
"Uninsured" Births	1.7%	4.4%	3.7%	2.3%
Medicare Beneficiaries	92.0%	96.6%	97.2%	96.3%
Medically Uninsured	7.7%	7.8%	8.8%	10.6%
Transportation Score	116	107	103	113

RESOURCES	Benson	COUNTY	HEALTH PLANNING REGION	ARIZONA
FACILITIES				
General Hospitals	Yes	4	16	71
Hospital Beds/1000 Residents	1.8	1.3	2.4	1.9
Designated as Sole Community Provider?	Yes	4	16	56
Specialty Beds	0	0	523	3,645
Skilled Nursing Facilities	1	3	24	102
Nursing Beds	58	268	2,923	11,632
SERVICES				
Licensed Home Health Agencies	0	4	35	179
Ambulatory Care Sites Type	A, D	A, B, C, D, E	A, B, C, D, E	A,B,C,D,E
Licensed Pharmacies	5	26	244	1,332
Certified Ambulance Services	2	10	32	106
PERSONNEL				
Primary Care Providers	13.0	112	1,884	9,751
Ratio-Population:Provider	965 :1	1,129:1	680 :1	747 :1
Nurse Practitioners	31	327	2,158	9,932
Physician Assistants	2	24	303	3,049
Registered Nurses	144	1,158	14,209	80,111
Midwives	0	5	66	312
Dentists	4	47	666	4,325
UTILIZATION				
AMBULATORY CARE SENSITIVE CONDITIONS				
ACSs/1000 Residents Age <65	58.6	52.7	34.9	34.5
Points Above/Below (-) Statewide Average	24.1	18.1	0.4	***
HOSPITALIZATION				
Inpatient Days/1000 Residents	748	600	571	570
Inpatient Days/1000 by Age Group:				
0-14 yrs	544	331	330	320
15-19 yrs	493	282	277	285
20-44 yrs	403	333	378	400
45-64 yrs	706	589	637	611
65-84 yrs	1,358	1,200	1,059	1,122
85+ yrs	1,501	1,692	1,771	1,815
Leading Diagnosis	Encounter for observation			
Leading Procedure	Introduction of Serum, Toxoid and Vaccine into Muscle, P			
(Non-maternity related)				
*** Not Applicable, ++ Insufficient Data, ## Not Available				

HEALTH STATUS	Benson	COUNTY	HEALTH PLANNING REGION	ARIZONA
INFANT MORTALITY RATE	++	6.2	5.5	5.7
MORTALITY, LEADING CAUSE OF DEATH				
Infant	++			
Child (1-14)	++			
Adolescent (15-19)	++			
Young Adult (20-44)				Poisoning by psychotropic drugs, not elsewhere cl
Mid Age (45-64)				Chronic ischaemic heart disease
Elderly (65-84)				Chronic ischaemic heart disease
Aged (85+)				Chronic ischaemic heart disease
PERCENT PREMATURE MORTALITY	53.2%	55.7%	52.9%	54.9%
NATALITY				
Fertility Rate/1000 Females 15-44 yrs	74.7	66.6	59.1	61.4
Birth Rate/1000 Residents	8.9	11.2	11.0	11.8
0-4 Prenatal Care Visits/1000 Births	80.6	130.5	117.6	66.5
Prenatal Care Began:				
None	3.9%	6.9%	5.1%	5.6%
Trimester One	66.0%	59.4%	64.6%	70.4%
Trimester Two	22.6%	23.3%	21.5%	18.1%
Trimester Three	7.2%	10.1%	8.6%	5.9%
Unknown	0.3%	0.3%	0.2%	0.0%
Low-weight Births/1000 Live Births	64.1	78.8	75.5	72.8
Teen Births/1000 Females 14-19 yrs	17.5	24.0	20.1	20.2
Area Location IDs:				
Census Tracts: 040030003.01, 040030003.03, 040030003.04, 040030003.05				
Other Places in area:				
Benson, Bradberry, Cascabel, Chamiso, Fenner, Curtiss, Dragoon, Hookers Hot Springs, Johnson, Land, Mescal, Pomerene, Saint David, Sibyl, Tully				
*** Not Applicable, ++ Insufficient Data, ## Not Available				

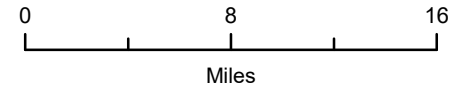
BENSON PRIMARY CARE AREA



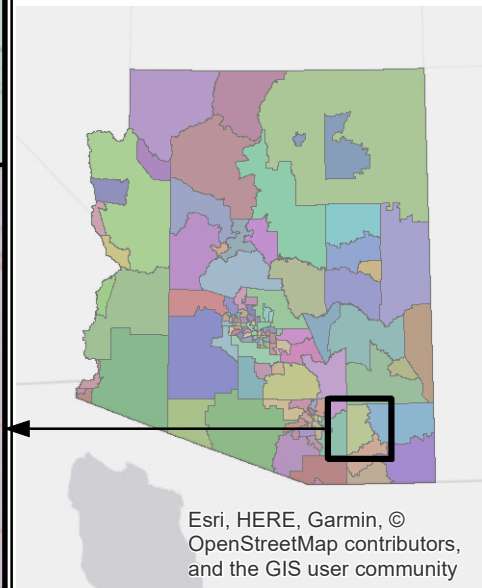
PCA ID 121



ARIZONA DEPARTMENT OF HEALTH SERVICES



Map Date 03/14/2018



Sources: Esri, HERE, Garmin, USGS, Intermap, INCREMENT P, NRCan, Esri Japan, METI, Esri China (Hong Kong), Esri Korea, Esri (the Netherlands), NGCC, © OpenStreetMap contributors, and the GIS User Community