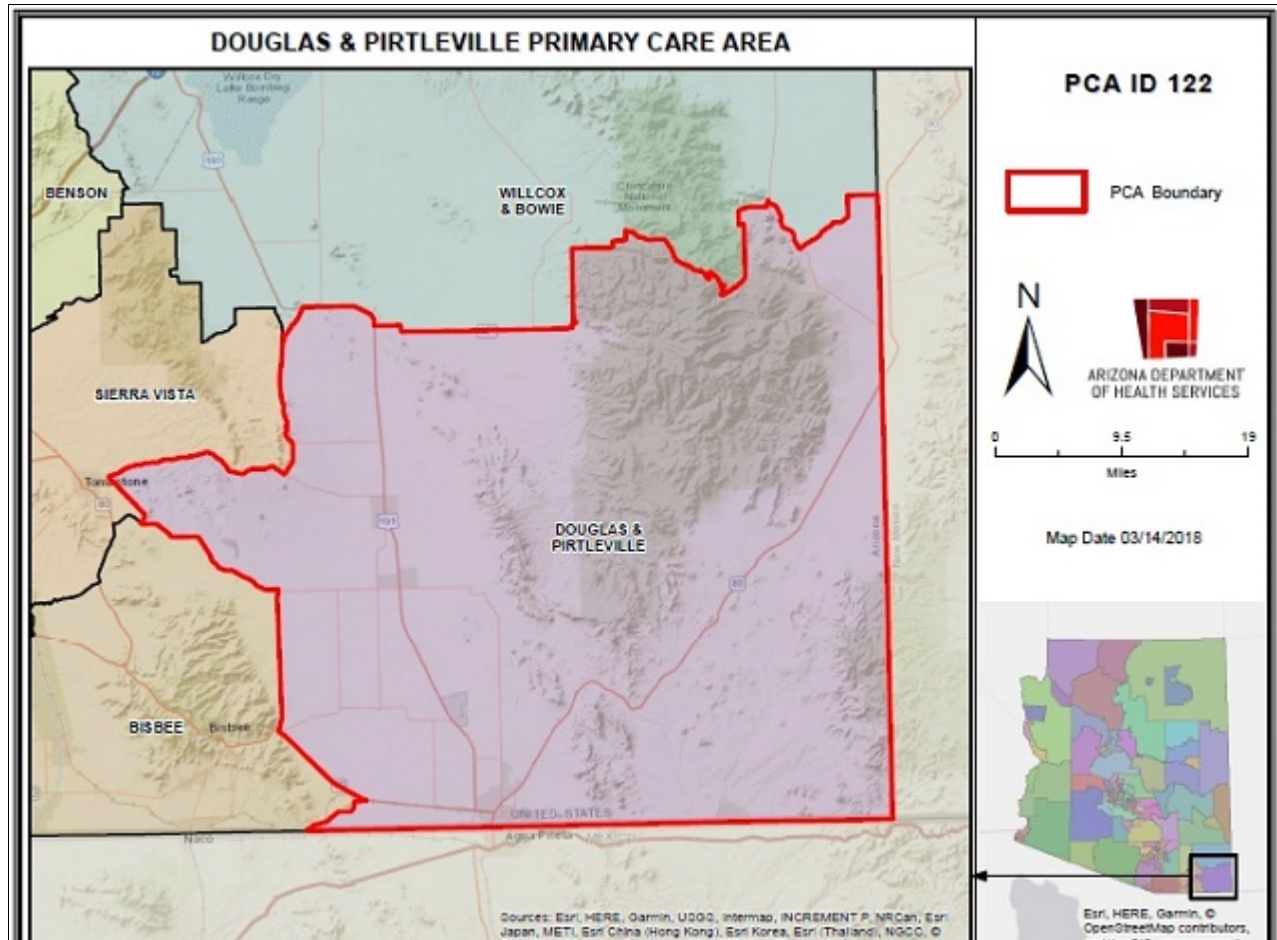


# Douglas & Pirtleville Primary Care Area (PCA) 2021 STATISTICAL PROFILE

For definitions and sources of data used in these profiles, see:

<http://www.azdhs.gov/documents/prevention/health-systems-development/data-reports-maps/reports/datadocu.pdf>

DESCRIPTION OF AREA	PCA Number .....	122
	Major Population Center .....	Douglas
	County .....	COCHISE
	Health Planning Region .....	2
	Primary Care Score .....	33
	Rural Code Designation: .....	RURAL
	Special Tax District? .....	No
	State House Legislative District .....	19, 21
	Designated as AzMUA? .....	Yes
	Designated as Primary Care HPSA .....	P Low Inc., (Douglas & Pirtleville)
	Designated as Federal MUA/P .....	53.90, MUA, (Douglas), 58.93, MUA, (Sierra Vista/Benson)
	Next Nearest Provider .....	Pirtleville
	2nd Nearest Provider .....	McNeal
	Travel Distance to Next Nearest Provider	2.1 miles
	Travel Distance to 2nd Nearest Provider...	21.08 miles

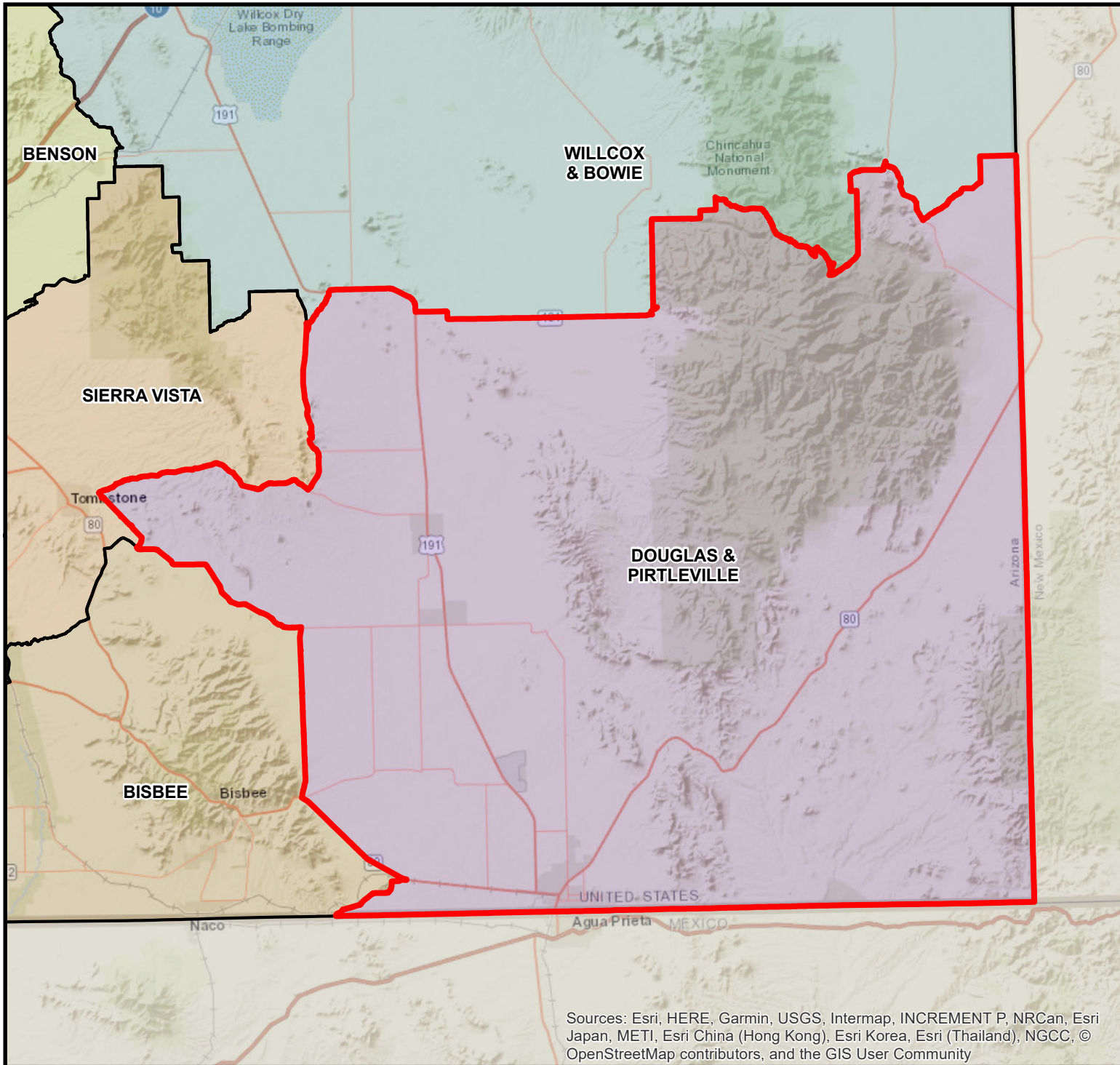


DEMOGRAPHICS	Douglas & Pirtleville	COUNTY	HEALTH PLANNING REGION	ARIZONA
POPULATION .....	23,340	126,463	1,281,867	7,285,370
Population Density .....	12.4	20.3	55.4	63.9
Persons By Age .....				
0-14 .....	4,460	22,805	225,818	1,384,121
15-19 .....	1,895	7,794	84,889	485,151
20-44 .....	9,103	37,718	414,858	2,400,824
45-64 .....	5,167	30,622	298,138	1,745,588
65-84 .....	3,179	25,289	223,166	1,142,268
85 + .....	378	2,917	28,193	139,201
Race/Ethnicity				
White .....	72.3%	81.5%	77.7%	75.8%
American Indian .....	1.6%	1.2%	3.2%	4.0%
Black .....	2.1%	4.4%	3.5%	4.2%
Asian/Pacific Islander .....	0.5%	2.4%	2.7%	3.1%
Other .....	23.5%	10.5%	12.9%	12.9%
Hispanic .....	76.9%	33.6%	37.0%	30.5%
Communities of Color .....	81.2%	45.6%	49.6%	46.6%
Gender				
Females .....	42.8%	49.1%	50.5%	50.3%
Males .....	57.2%	50.9%	49.5%	49.7%
Single Parent Families .....	33.0%	23.4%	28.5%	26.9%
Female Headed Households .....	31.4%	27.7%	28.4%	26.4%
Disability Population .....	14.0%	17.6%	15.3%	13.2%
Speak Other Than English at Home .....	65.2%	27.5%	29.1%	26.7%
INCOME				
Population below 100% FPL .....	24.9%	15.2%	16.2%	14.1%
Population below 200% FPL .....	53.0%	38.5%	36.8%	33.0%
Median Household Income .....	\$39,342	\$47,522	\$55,710	\$62,115
Children <12 in Poverty .....	37.3%	23.1%	23.2%	20.7%
EDUCATION				
Less Than 9th Grade Education .....	12.1%	4.5%	4.4%	5.0%
9th-12th Grade, No Diploma .....	11.1%	6.4%	7.0%	7.0%
High School Graduate .....	28.0%	23.9%	22.3%	23.8%
Some College .....	23.9%	27.8%	25.3%	24.9%
College or Professional Degree Holder .....	24.5%	36.9%	40.9%	39.1%
MISCELLANEOUS				
Overnight Tourist Visits .....	107,689	575,383	5,800,084	49,599,807
Unemployed .....	33.5%	13.9%	12.1%	10.0%
"Uninsured" Births .....	2.1%	4.4%	3.7%	2.3%
Medicare Beneficiaries .....	97.9%	96.6%	97.2%	96.3%
Medically Uninsured .....	9.2%	7.8%	8.8%	10.6%
Transportation Score .....	121	107	103	113

RESOURCES	Douglas & Pirtleville	COUNTY	HEALTH PLANNING REGION	ARIZONA
<b>FACILITIES</b>				
General Hospitals .....	No	4	16	71
Hospital Beds/1000 Residents .....	0.0	1.3	2.4	1.9
Designated as Sole Community Provider?	No	4	16	56
Specialty Beds .....	0	0	523	3,645
Skilled Nursing Facilities .....	1	3	24	102
Nursing Beds .....	58	268	2,923	11,632
<b>SERVICES</b>				
Licensed Home Health Agencies .....	0	4	35	179
Ambulatory Care Sites Type .....	A, B, D, E	A, B, C, D, E	A, B, C, D, E	A,B,C,D,E
Licensed Pharmacies .....	5	26	244	1,332
Certified Ambulance Services .....	2	10	32	106
<b>PERSONNEL</b>				
Primary Care Providers .....	20.0	112	1,884	9,751
Ratio-Population:Provider .....	1,167 :1	1,129:1	680 :1	747 :1
Nurse Practitioners .....	47	327	2,158	9,932
Physician Assistants .....	1	24	303	3,049
Registered Nurses .....	112	1,158	14,209	80,111
Midwives .....	0	5	66	312
Dentists .....	6	47	666	4,325
<b>UTILIZATION</b>				
<b>AMBULATORY CARE SENSITIVE CONDITIONS</b>				
ACSs/1000 Residents Age <65 .....	60.5	52.7	34.9	34.5
Points Above/Below (-) Statewide Average	26.0	18.1	0.4	***
<b>HOSPITALIZATION</b>				
Inpatient Days/1000 Residents .....	600	600	571	570
Inpatient Days/1000 by Age Group:				
0-14 yrs .....	290	331	330	320
15-19 yrs .....	211	282	277	285
20-44 yrs .....	311	333	378	400
45-64 yrs .....	723	589	637	611
65-84 yrs .....	1,538	1,200	1,059	1,122
85+ yrs .....	2,256	1,692	1,771	1,815
Leading Diagnosis .....	Acute upper respiratory i			
Leading Procedure .....	Introduction of Serum, Toxoid and Vaccine into Muscle, P			
(Non-maternity related)				
*** Not Applicable, ++ Insufficient Data, ## Not Available				

HEALTH STATUS	Douglas & Pirtleville	COUNTY	HEALTH PLANNING REGION	ARIZONA
INFANT MORTALITY RATE .....	++	6.2	5.5	5.7
<b>MORTALITY, LEADING CAUSE OF DEATH</b>				
Infant .....		Disorders related to short gestation and low birth w		
Child (1-14) .....	++			
Adolescent (15-19) .....	++			
Young Adult (20-44) .....		Cardiac arrest		
Mid Age (45-64) .....		Cardiac arrest		
Elderly (65-84) .....		Cardiac arrest		
Aged (85+) .....		Cardiac arrest		
PERCENT PREMATURE MORTALITY	56.8%	55.7%	52.9%	54.9%
<b>NATALITY</b>				
Fertility Rate/1000 Females 15-44 yrs .....	81.9	66.6	59.1	61.4
Birth Rate/1000 Residents .....	13.9	11.2	11.0	11.8
0-4 Prenatal Care Visits/1000 Births .....	192.6	130.5	117.6	66.5
Prenatal Care Began:				
None .....	12.7%	6.9%	5.1%	5.6%
Trimester One .....	49.4%	59.4%	64.6%	70.4%
Trimester Two .....	26.1%	23.3%	21.5%	18.1%
Trimester Three .....	11.2%	10.1%	8.6%	5.9%
Unknown .....	0.6%	0.3%	0.2%	0.0%
Low-weight Births/1000 Live Births .....	70.9	78.8	75.5	72.8
Teen Births/1000 Females 14-19 yrs .....	38.9	24.0	20.1	20.2
<b>Area Location IDs:</b>				
Census Tracts: 040030001.01, 040030001.02, 040030005.01, 040030005.02, 040030005.03, 040030006.00, 040030007.00, 040030008.00, 040030009.01, 040030009.02				
<b>Other Places in area:</b>				
Apache, Bernardino, Calumet, Camp Rucker, Cazador, Elfrida, Chiricahua, Double Adobe, Douglas, Grizzles Orchard, Hood Hafassienda, McNeal, Paradise, Pirtleville, Portal, Rancho San Jose, McNeal				
*** Not Applicable, ++ Insufficient Data, ## Not Available				

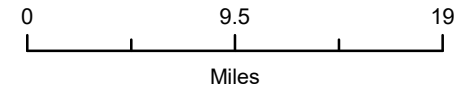
# DOUGLAS & PIRTLEVILLE PRIMARY CARE AREA



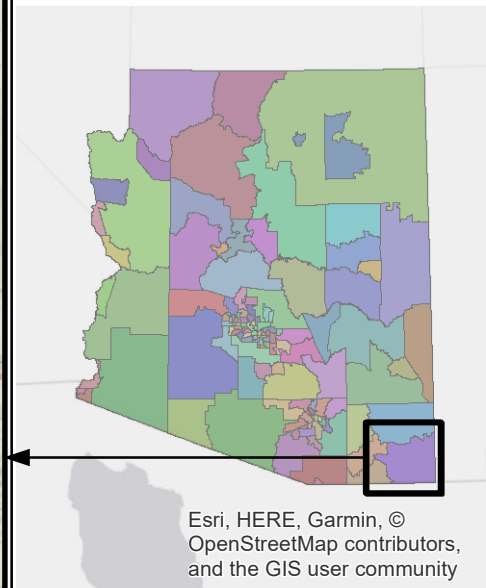
**PCA ID 122**



ARIZONA DEPARTMENT  
OF HEALTH SERVICES



Map Date 03/14/2018



Sources: Esri, HERE, Garmin, USGS, Intermap, INCREMENT P, NRCan, Esri Japan, METI, Esri China (Hong Kong), Esri Korea, Esri (Thailand), NGCC, © OpenStreetMap contributors, and the GIS User Community

Esri, HERE, Garmin, © OpenStreetMap contributors, and the GIS user community