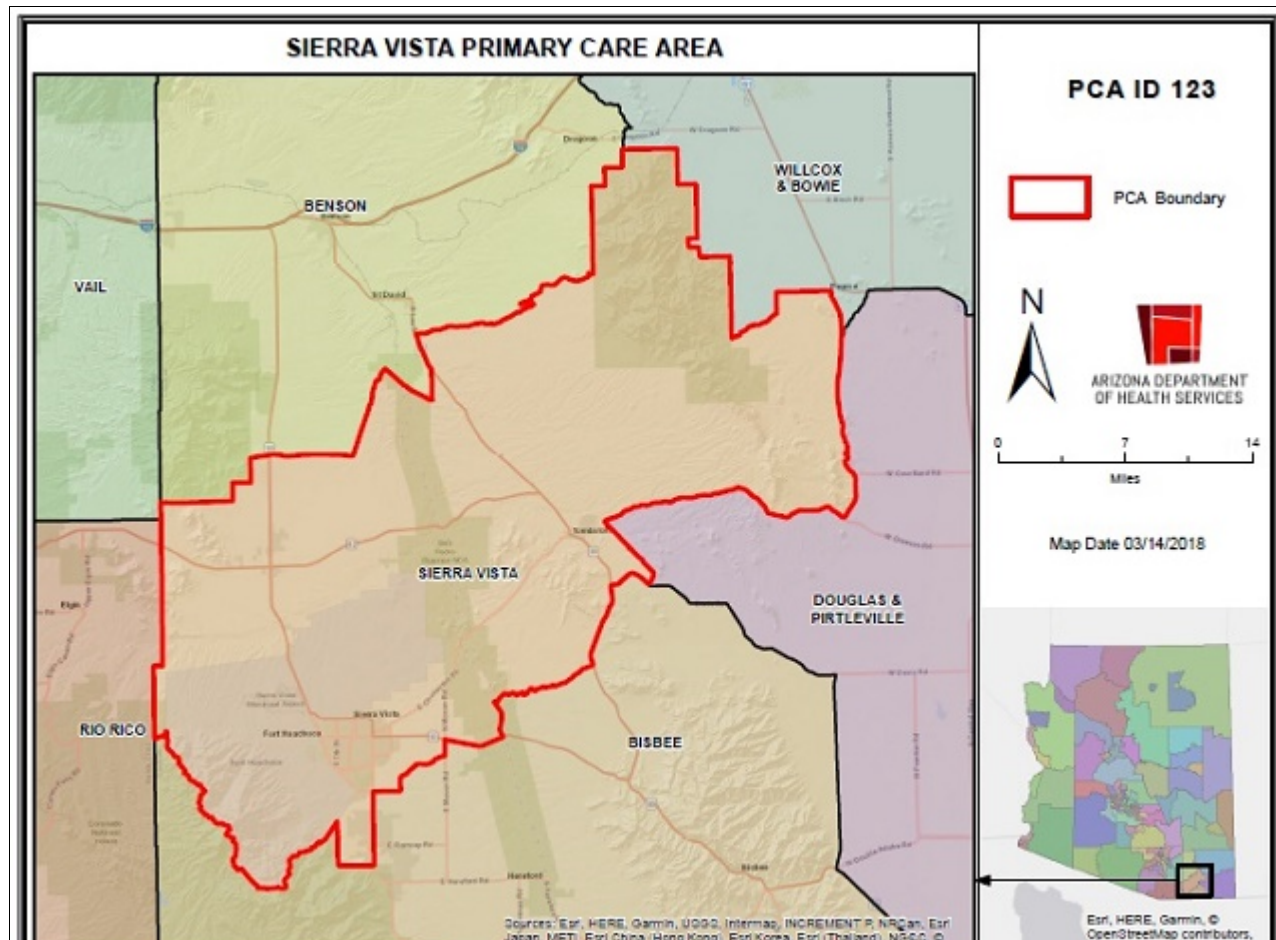


Sierra Vista Primary Care Area (PCA) 2021 STATISTICAL PROFILE

For definitions and sources of data used in these profiles, see:

<http://www.azdhs.gov/documents/prevention/health-systems-development/data-reports-maps/reports/datadocu.pdf>

DESCRIPTION OF AREA	PCA Number	123
	Major Population Center	Sierra Vista
	County	COCHISE
	Health Planning Region	2
	Primary Care Score	26
	Rural Code Designation:	RURAL
	Special Tax District?	No
	State House Legislative District	19
	Designated as AzMUA?	Yes
	Designated as Primary Care HPSA	P Low Inc., (Sierra Vista)
	Designated as Federal MUA/P	58.93, MUA, (Sierra Vista/Benson)
	Next Nearest Provider	Fort Huachuca
	2nd Nearest Provider	Huachuca City
	Travel Distance to Next Nearest Provider	5.31 miles
	Travel Distance to 2nd Nearest Provider...	5.79 miles



DEMOGRAPHICS	Sierra Vista	COUNTY	HEALTH PLANNING REGION	ARIZONA
POPULATION	57,620	126,463	1,281,867	7,285,370
Population Density	79.7	20.3	55.4	63.9
Persons By Age				
0-14	10,562	22,805	225,818	1,384,121
15-19	3,220	7,794	84,889	485,151
20-44	17,652	37,718	414,858	2,400,824
45-64	12,522	30,622	298,138	1,745,588
65-84	11,015	25,289	223,166	1,142,268
85 +	1,217	2,917	28,193	139,201
Race/Ethnicity				
White	79.6%	81.5%	77.7%	75.8%
American Indian	1.0%	1.2%	3.2%	4.0%
Black	8.0%	4.4%	3.5%	4.2%
Asian/Pacific Islander	4.4%	2.4%	2.7%	3.1%
Other	7.0%	10.5%	12.9%	12.9%
Hispanic	22.1%	33.6%	37.0%	30.5%
Communities of Color	40.0%	45.6%	49.6%	46.6%
Gender				
Females	50.4%	49.1%	50.5%	50.3%
Males	49.6%	50.9%	49.5%	49.7%
Single Parent Families	22.8%	23.4%	28.5%	26.9%
Female Headed Households	26.8%	27.7%	28.4%	26.4%
Disability Population	17.0%	17.6%	15.3%	13.2%
Speak Other Than English at Home	16.9%	27.5%	29.1%	26.7%
INCOME				
Population below 100% FPL	12.2%	15.2%	16.2%	14.1%
Population below 200% FPL	33.8%	38.5%	36.8%	33.0%
Median Household Income	\$59,296	\$47,522	\$55,710	\$62,115
Children <12 in Poverty	17.1%	23.1%	23.2%	20.7%
EDUCATION				
Less Than 9th Grade Education	4.0%	4.5%	4.4%	5.0%
9th-12th Grade, No Diploma	2.6%	6.4%	7.0%	7.0%
High School Graduate	19.7%	23.9%	22.3%	23.8%
Some College	29.1%	27.8%	25.3%	24.9%
College or Professional Degree Holder	44.4%	36.9%	40.9%	39.1%
MISCELLANEOUS				
Overnight Tourist Visits	261,210	575,383	5,800,084	49,599,807
Unemployed	12.0%	13.9%	12.1%	10.0%
"Uninsured" Births	7.1%	4.4%	3.7%	2.3%
Medicare Beneficiaries	96.9%	96.6%	97.2%	96.3%
Medically Uninsured	6.2%	7.8%	8.8%	10.6%
Transportation Score	98	107	103	113

RESOURCES	Sierra Vista	COUNTY	HEALTH PLANNING REGION	ARIZONA
FACILITIES				
General Hospitals	Yes	4	16	71
Hospital Beds/1000 Residents	1.7	1.3	2.4	1.9
Designated as Sole Community Provider?	Yes	4	16	56
Specialty Beds	0	0	523	3,645
Skilled Nursing Facilities	1	3	24	102
Nursing Beds	152	268	2,923	11,632
SERVICES				
Licensed Home Health Agencies	2	4	35	179
Ambulatory Care Sites Type	A, B, C, D, E	A, B, C, D, E	A, B, C, D, E	A,B,C,D,E
Licensed Pharmacies	10	26	244	1,332
Certified Ambulance Services	4	10	32	106
PERSONNEL				
Primary Care Providers	58.0	112	1,884	9,751
Ratio-Population:Provider	993 :1	1,129:1	680 :1	747 :1
Nurse Practitioners	176	327	2,158	9,932
Physician Assistants	13	24	303	3,049
Registered Nurses	567	1,158	14,209	80,111
Midwives	3	5	66	312
Dentists	30	47	666	4,325
UTILIZATION				
AMBULATORY CARE SENSITIVE CONDITIONS				
ACSS/1000 Residents Age <65	47.5	52.7	34.9	34.5
Points Above/Below (-) Statewide Average	12.9	18.1	0.4	***
HOSPITALIZATION				
Inpatient Days/1000 Residents	556	600	571	570
Inpatient Days/1000 by Age Group:				
0-14 yrs	333	331	330	320
15-19 yrs	356	282	277	285
20-44 yrs	334	333	378	400
45-64 yrs	569	589	637	611
65-84 yrs	1,109	1,200	1,059	1,122
85+ yrs	1,699	1,692	1,771	1,815
Leading Diagnosis	Chest pain, unspecified			
Leading Procedure	Introduction of Serum, Toxoid and Vaccine into Muscle, P			
(Non-maternity related)				
*** Not Applicable, ++ Insufficient Data, ## Not Available				

HEALTH STATUS	Sierra Vista	COUNTY	HEALTH PLANNING REGION	ARIZONA
INFANT MORTALITY RATE	4.9	6.2	5.5	5.7
MORTALITY, LEADING CAUSE OF DEATH				
Infant	Cardiovascular disorders originating in the perinat			
Child (1-14)	++			
Adolescent (15-19)	Assault by other and unspecified firearm discharge			
Young Adult (20-44)	Open wound of head			
Mid Age (45-64)	Cardiac arrest			
Elderly (65-84)	Cardiac arrest			
Aged (85+)	Cardiac arrest			
PERCENT PREMATURE MORTALITY	55.2%	55.7%	52.9%	54.9%
NATALITY				
Fertility Rate/1000 Females 15-44 yrs	66.2	66.6	59.1	61.4
Birth Rate/1000 Residents	11.6	11.2	11.0	11.8
0-4 Prenatal Care Visits/1000 Births	87.8	130.5	117.6	66.5
Prenatal Care Began:				
None	4.5%	6.9%	5.1%	5.6%
Trimester One	65.1%	59.4%	64.6%	70.4%
Trimester Two	20.5%	23.3%	21.5%	18.1%
Trimester Three	9.7%	10.1%	8.6%	5.9%
Unknown	0.2%	0.3%	0.2%	0.0%
Low-weight Births/1000 Live Births	83.2	78.8	75.5	72.8
Teen Births/1000 Females 14-19 yrs	19.2	24.0	20.1	20.2

Area Location IDs:

Census Tracts: 040030002.03, 040030004.00, 040030013.01, 040030013.02, 040030014.01, 040030014.02, 040030015.01, 040030015.02, 040030016.01, 040030016.02, 040030017.01, 040030017.02, 040030017.03, 040030018.01, 040030018.02, 040030019.00

Other Places in area:

Arizona Sun Sites, Benson Junction, Black Diamond, Bonnie Blink, Boquillas, Buffalo Corral, Campstone, Charleston, East Gate, Fairbank, Fort Huachuca, Contention, Coronado Village, Courtland, De Anza Village, Fry, Gatewood Housing, Gleeson, Huachuca City, Lewis Springs, Sierra Vista, Signal Village, Tombstone, Whetstone

*** Not Applicable, ++ Insufficient Data, ## Not Available

SIERRA VISTA PRIMARY CARE AREA

PCA ID 123



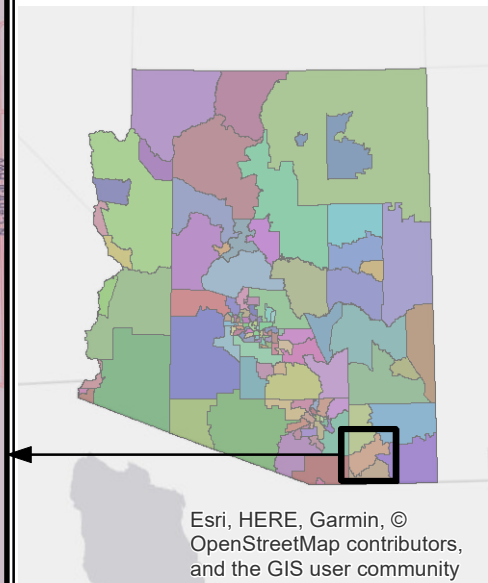
PCA Boundary



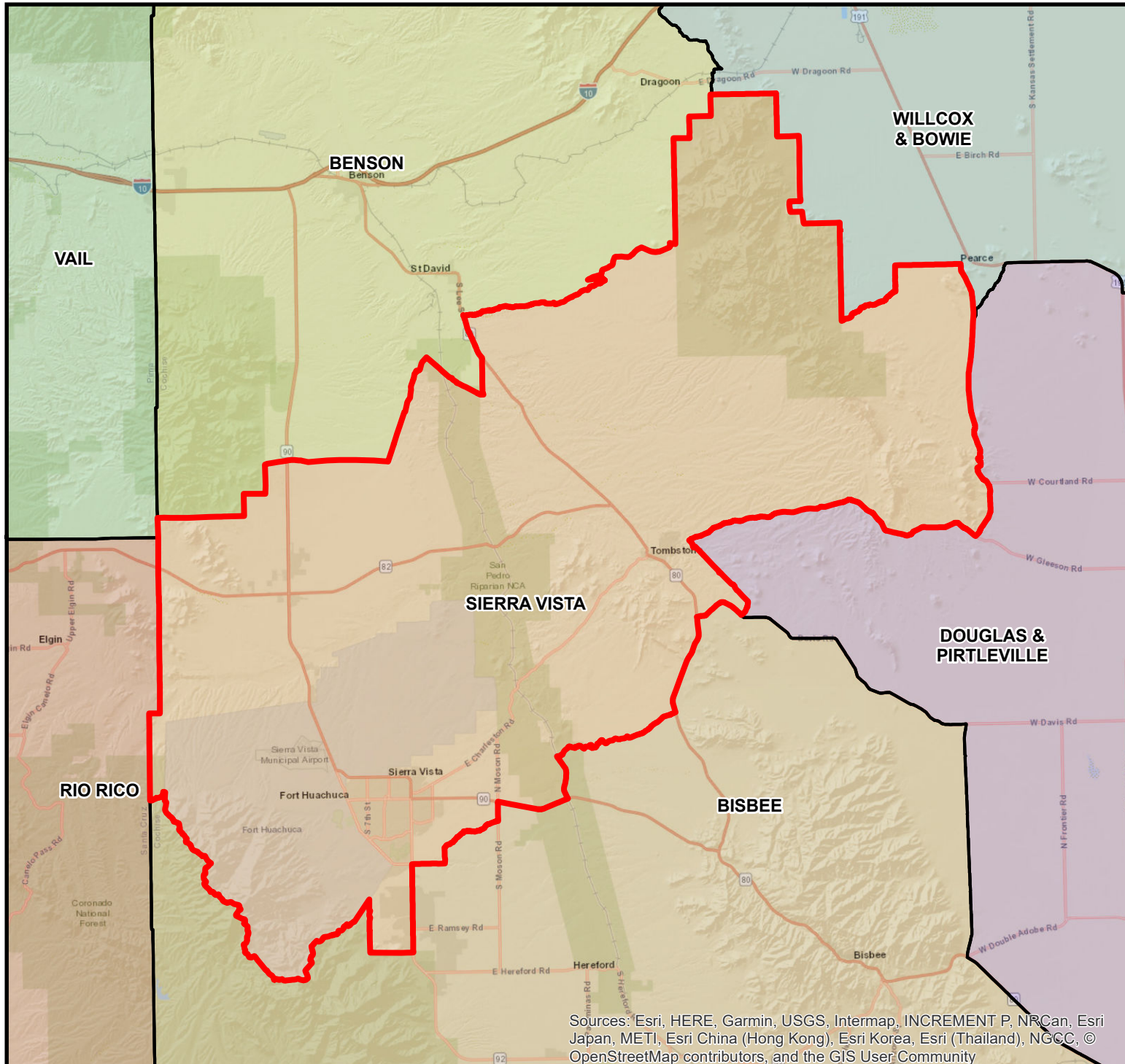
ARIZONA DEPARTMENT
OF HEALTH SERVICES



Map Date 03/14/2018



Esri, HERE, Garmin, ©
OpenStreetMap contributors,
and the GIS user community



Sources: Esri, HERE, Garmin, USGS, Intermap, INCREMENT P, NRCan, Esri Japan, METI, Esri China (Hong Kong), Esri Korea, Esri (Thailand), NGCC, © OpenStreetMap contributors, and the GIS User Community