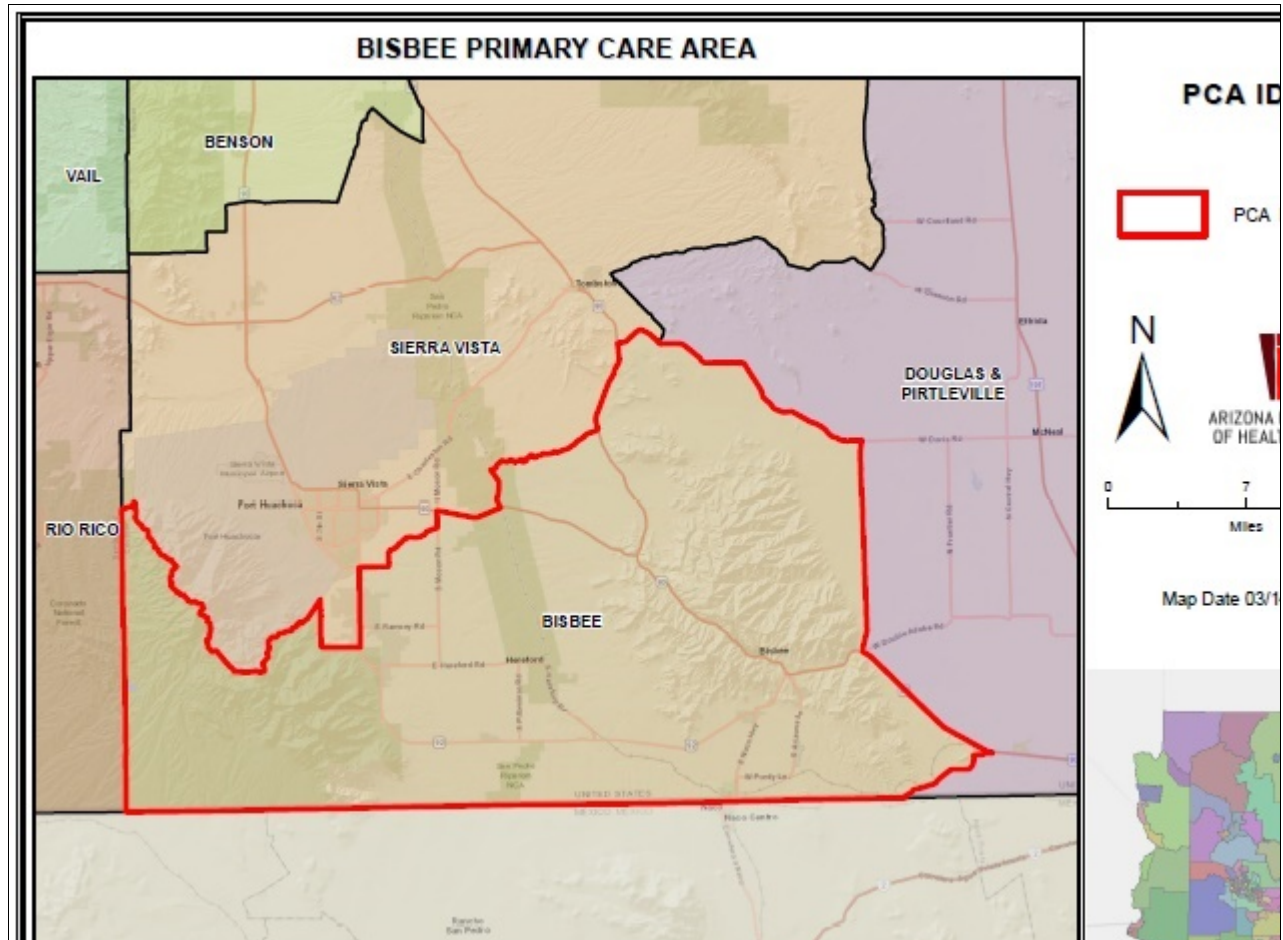


Bisbee Primary Care Area (PCA) 2021 STATISTICAL PROFILE

For definitions and sources of data used in these profiles, see:

<http://www.azdhs.gov/documents/prevention/health-systems-development/data-reports-maps/reports/datadocu.pdf>

DESCRIPTION OF AREA	PCA Number	124
	Major Population Center	Sierra Vista Southeast
	County	COCHISE
	Health Planning Region	2
	Primary Care Score	33
	Rural Code Designation:	RURAL
	Special Tax District?	No
	State House Legislative District	19, 21
	Designated as AzMUA?	Yes
	Designated as Primary Care HPSA	P Low Inc., (Bisbee)
	Designated as Federal MUA/P	60.70, MUP-Low Inc, (Bisbee)
	Next Nearest Provider	Sierra Vista
	2nd Nearest Provider	Fort Huachuca
	Travel Distance to Next Nearest Provider	9.83 miles
	Travel Distance to 2nd Nearest Provider...	14.91 miles

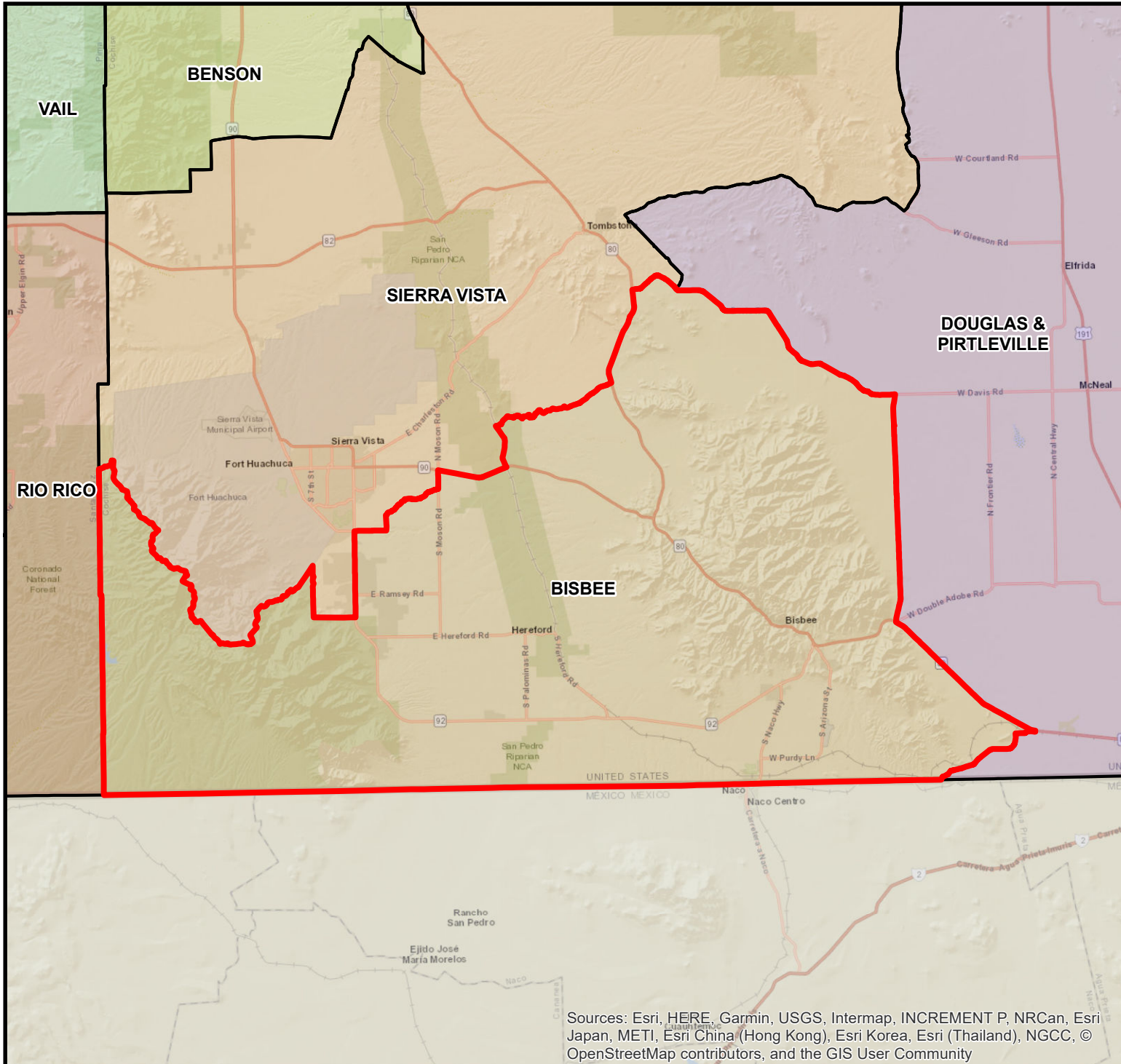


DEMOGRAPHICS	Bisbee	COUNTY	HEALTH PLANNING REGION	ARIZONA
POPULATION	22,071	126,463	1,281,867	7,285,370
Population Density	35.8	20.3	55.4	63.9
Persons By Age				
0-14	3,961	22,805	225,818	1,384,121
15-19	1,601	7,794	84,889	485,151
20-44	4,986	37,718	414,858	2,400,824
45-64	7,456	30,622	298,138	1,745,588
65-84	5,410	25,289	223,166	1,142,268
85 +	654	2,917	28,193	139,201
Race/Ethnicity				
White	90.4%	81.5%	77.7%	75.8%
American Indian	1.2%	1.2%	3.2%	4.0%
Black	1.7%	4.4%	3.5%	4.2%
Asian/Pacific Islander	1.1%	2.4%	2.7%	3.1%
Other	5.6%	10.5%	12.9%	12.9%
Hispanic	26.2%	33.6%	37.0%	30.5%
Communities of Color	34.9%	45.6%	49.6%	46.6%
Gender				
Females	53.5%	49.1%	50.5%	50.3%
Males	46.5%	50.9%	49.5%	49.7%
Single Parent Families	21.4%	23.4%	28.5%	26.9%
Female Headed Households	31.1%	27.7%	28.4%	26.4%
Disability Population	17.9%	17.6%	15.3%	13.2%
Speak Other Than English at Home	20.5%	27.5%	29.1%	26.7%
INCOME				
Population below 100% FPL	14.7%	15.2%	16.2%	14.1%
Population below 200% FPL	36.6%	38.5%	36.8%	33.0%
Median Household Income	\$48,262	\$47,522	\$55,710	\$62,115
Children <12 in Poverty	28.2%	23.1%	23.2%	20.7%
EDUCATION				
Less Than 9th Grade Education	6.4%	4.5%	4.4%	5.0%
9th-12th Grade, No Diploma	4.4%	6.4%	7.0%	7.0%
High School Graduate	21.8%	23.9%	22.3%	23.8%
Some College	28.8%	27.8%	25.3%	24.9%
College or Professional Degree Holder	38.1%	36.9%	40.9%	39.1%
MISCELLANEOUS				
Overnight Tourist Visits	100,002	575,383	5,800,084	49,599,807
Unemployed	7.1%	13.9%	12.1%	10.0%
"Uninsured" Births	2.2%	4.4%	3.7%	2.3%
Medicare Beneficiaries	97.7%	96.6%	97.2%	96.3%
Medically Uninsured	8.0%	7.8%	8.8%	10.6%
Transportation Score	116	107	103	113

RESOURCES	Bisbee	COUNTY	HEALTH PLANNING REGION	ARIZONA
FACILITIES				
General Hospitals	Yes	4	16	71
Hospital Beds/1000 Residents	0.6	1.3	2.4	1.9
Designated as Sole Community Provider?	Yes	4	16	56
Specialty Beds	0	0	523	3,645
Skilled Nursing Facilities	0	3	24	102
Nursing Beds	0	268	2,923	11,632
SERVICES				
Licensed Home Health Agencies	2	4	35	179
Ambulatory Care Sites Type	A, C, D, E	A, B, C, D, E	A, B, C, D, E	A,B,C,D,E
Licensed Pharmacies	3	26	244	1,332
Certified Ambulance Services	1	10	32	106
PERSONNEL				
Primary Care Providers	16.0	112	1,884	9,751
Ratio-Population:Provider	1,379 :1	1,129:1	680 :1	747 :1
Nurse Practitioners	57	327	2,158	9,932
Physician Assistants	7	24	303	3,049
Registered Nurses	259	1,158	14,209	80,111
Midwives	2	5	66	312
Dentists	4	47	666	4,325
UTILIZATION				
AMBULATORY CARE SENSITIVE CONDITIONS				
ACSs/1000 Residents Age <65	50.1	52.7	34.9	34.5
Points Above/Below (-) Statewide Average	15.6	18.1	0.4	***
HOSPITALIZATION				
Inpatient Days/1000 Residents	590	600	571	570
Inpatient Days/1000 by Age Group:				
0-14 yrs	283	331	330	320
15-19 yrs	178	282	277	285
20-44 yrs	385	333	378	400
45-64 yrs	496	589	637	611
65-84 yrs	945	1,200	1,059	1,122
85+ yrs	1,355	1,692	1,771	1,815
Leading Diagnosis	Urinary tract infection,			
Leading Procedure	Introduction of Serum, Toxoid and Vaccine into Muscle, P			
(Non-maternity related)				
*** Not Applicable, ++ Insufficient Data, ## Not Available				

HEALTH STATUS	Bisbee	COUNTY	HEALTH PLANNING REGION	ARIZONA
INFANT MORTALITY RATE	++	6.2	5.5	5.7
MORTALITY, LEADING CAUSE OF DEATH				
Infant	Cardiovascular disorders originating in the perinat			
Child (1-14)	Open wound of head			
Adolescent (15-19)	++			
Young Adult (20-44)	Assault by other and unspecified firearm discharge			
Mid Age (45-64)	Cardiac arrest			
Elderly (65-84)	Cardiac arrest			
Aged (85+)	Cardiac arrest			
PERCENT PREMATURE MORTALITY	58.2%	55.7%	52.9%	54.9%
NATALITY				
Fertility Rate/1000 Females 15-44 yrs	50.5	66.6	59.1	61.4
Birth Rate/1000 Residents	8.7	11.2	11.0	11.8
0-4 Prenatal Care Visits/1000 Births	114.2	130.5	117.6	66.5
Prenatal Care Began:				
None	6.1%	6.9%	5.1%	5.6%
Trimester One	58.8%	59.4%	64.6%	70.4%
Trimester Two	24.6%	23.3%	21.5%	18.1%
Trimester Three	10.3%	10.1%	8.6%	5.9%
Unknown	0.2%	0.3%	0.2%	0.0%
Low-weight Births/1000 Live Births	84.6	78.8	75.5	72.8
Teen Births/1000 Females 14-19 yrs	18.0	24.0	20.1	20.2
Area Location IDs:				
Census Tracts: 040030010.00, 040030011.00, 040030012.00, 040030020.01, 040030020.02, 040030021.00				
Other Places in area:				
Bakerville, Bisbee, Bisbee Junction, Black Gap, Bledsoe, Briggs, Forrest, Copper Queen, Corta Junction, Don Luis, Galena, Hereford, Highland Park, Huachuca Terrace, Lowell, Miracle Valley, Naco, Neff, Nicksville, Palominas, Paul Spur, Ramsey, Rancho De Hannon, Rancho Del Rio, Rileys B Encinar, Rileys El Encinar, Saginaw, San Pedro, Sierra Vista Southeast, South Bisbee, Stark, Sunnyside, Tintown, Warren				
*** Not Applicable, ++ Insufficient Data, ## Not Available				

BISBEE PRIMARY CARE AREA



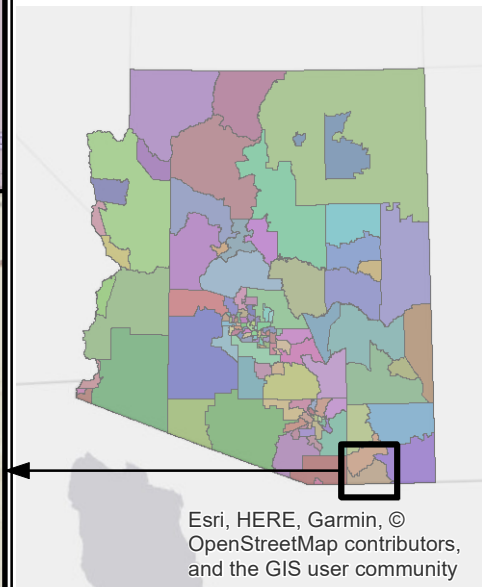
PCA ID 124



ARIZONA DEPARTMENT OF HEALTH SERVICES



Map Date 03/14/2018



Sources: Esri, HERE, Garmin, USGS, Intermap, INCREMENT P, NRCan, Esri Japan, METI, Esri China (Hong Kong), Esri Korea, Esri (Thailand), NGCC, © OpenStreetMap contributors, and the GIS User Community

Esri, HERE, Garmin, © OpenStreetMap contributors, and the GIS user community