

**Weekly Influenza Summary:**

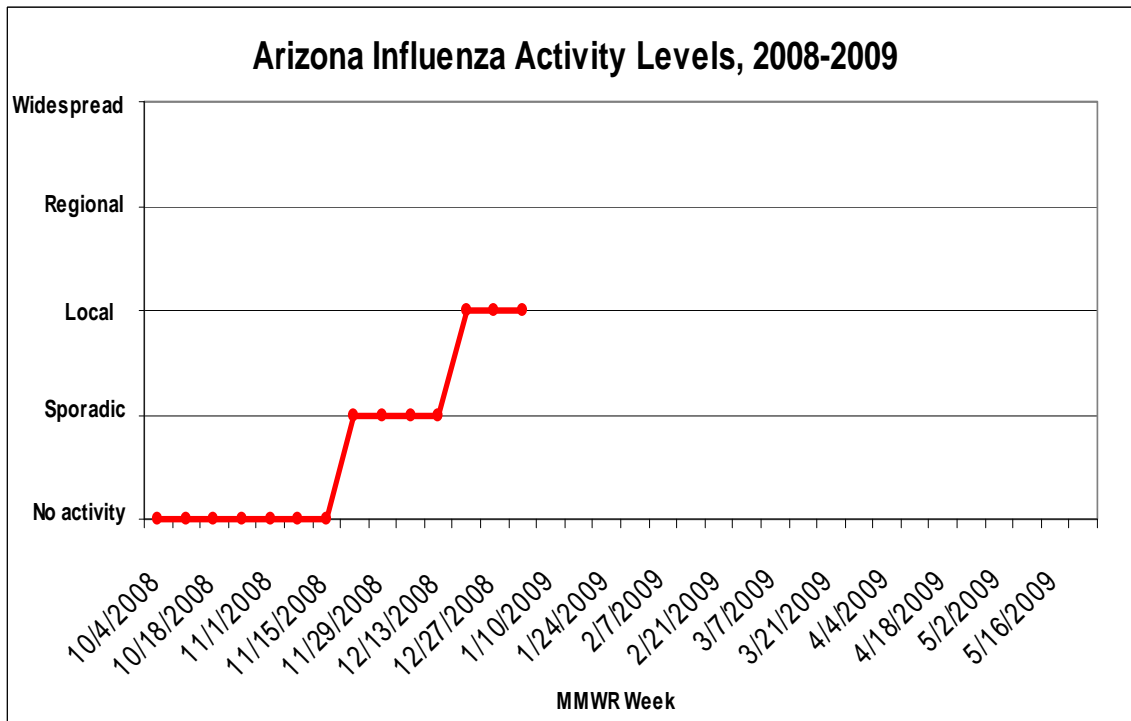
As of 1/6/2008, a total of 36 laboratory-confirmed cases of influenza were reported to ADHS for the 2008-09 season, and Arizona is reporting local influenza activity to CDC for the week ending 1/3/2009. Cases have been reported from seven counties (Coconino, Gila, Graham, Maricopa, Navajo, Pima, and Yavapai). The influenza-like-illness rate is higher than the state baseline for week 52. No pediatric influenza-associated deaths have been reported to ADHS.

Data in this report are provisional and may change as more reports are received.

National influenza surveillance data are available at the CDC’s Influenza Surveillance site (<http://www.cdc.gov/flu/weekly/fluactivity.htm>).

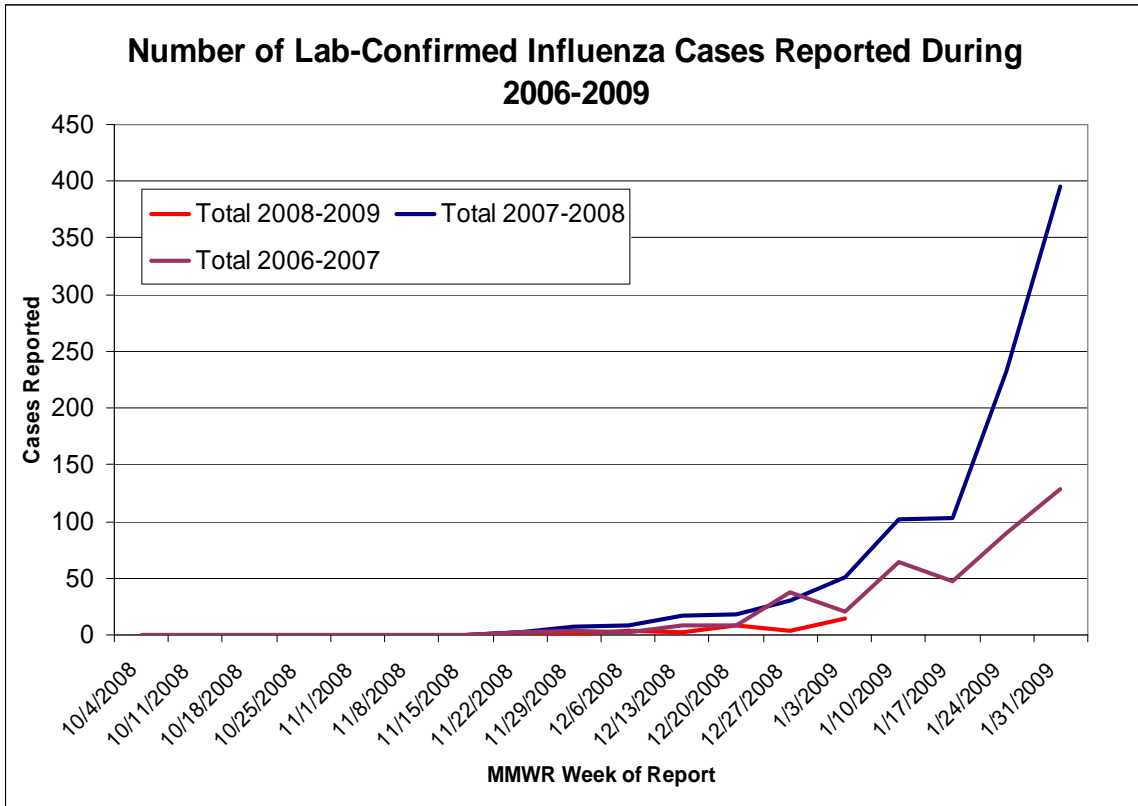
**Arizona Influenza Activity Levels**

The graph below shows the influenza activity levels reported to the CDC for this season only. For week 53, Arizona reported local activity. Definitions of these reporting categories can be found at <http://www.cdc.gov/flu/weekly/fluactivity.htm>.



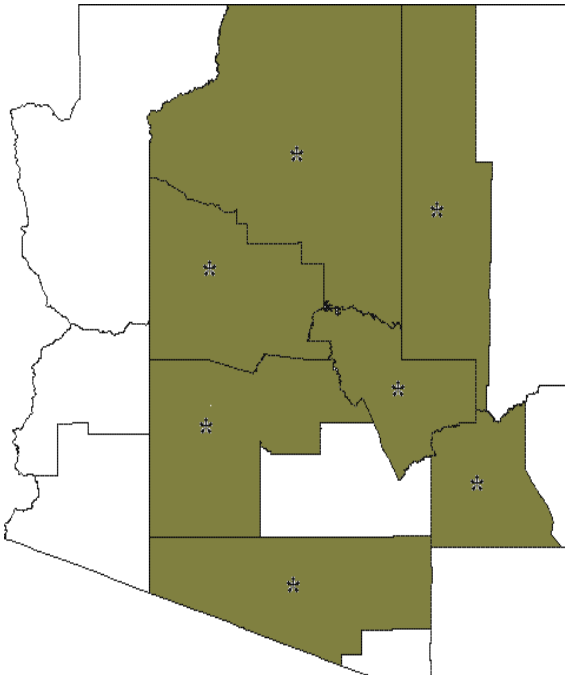
**Laboratory-Confirmed Influenza Activity by Season [2006-2009]:**

Arizona laboratories report positive influenza tests to ADHS. The positive cases are counted by the date of report to ADHS.



**Laboratory-Confirmed Influenza Activity by County:**

Arizona laboratories report positive influenza tests to ADHS. The positive cases are counted by the county of residence.



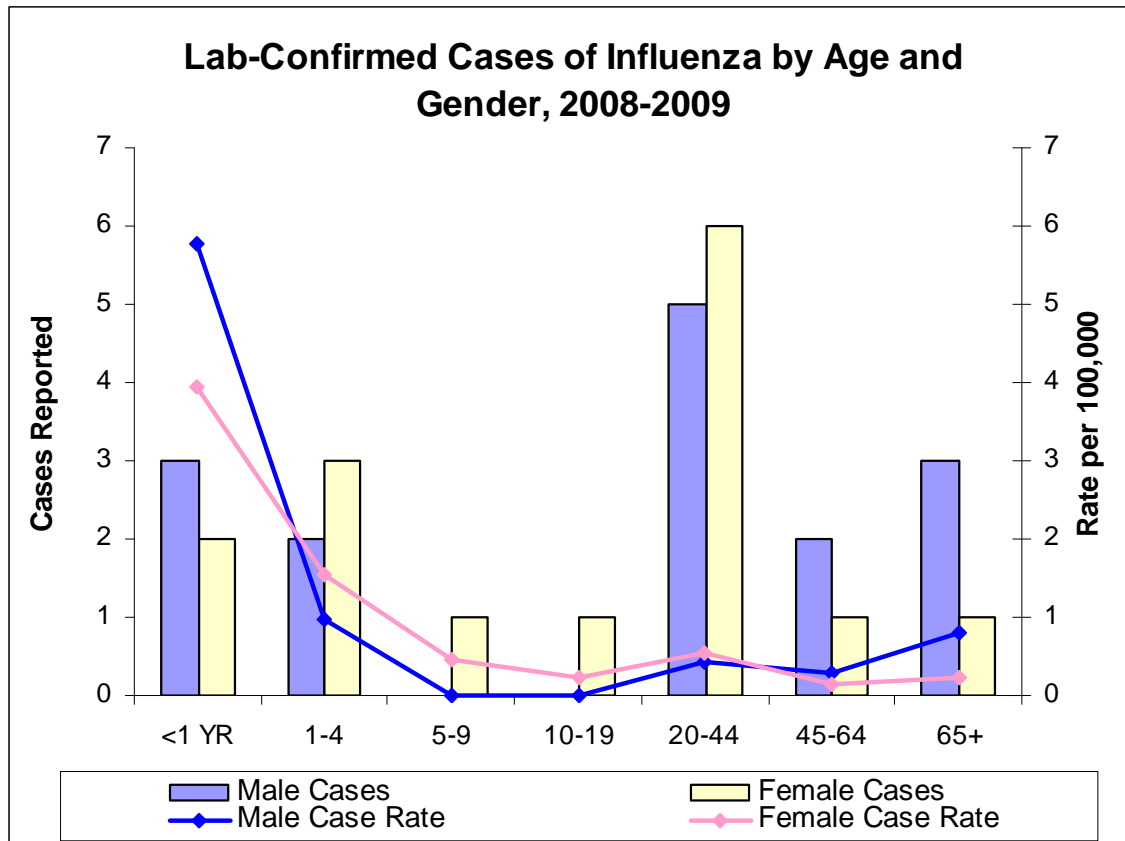
**Key:**

- \* = Any activity reported this season
- Green = Activity reported in the previous three weeks
- White = No activity reported in the previous three weeks

County	Number of Laboratory-Confirmed Cases		
	2008-2009 Season	Last Week	Last 3 Weeks
Apache	0	0	0
Cochise	0	0	0
Coconino	9	4	9
Gila	1	1	1
Graham	3	3	3
Greenlee	0	0	0
La Paz	0	0	0
Maricopa	16	2	7
Mohave	0	0	0
Navajo	2	1	2
Pima	4	3	4
Pinal	0	0	0
Santa Cruz	0	0	0
Yavapai	1	1	0
Yuma	0	0	0
Unknown	0	0	0
<b>Total</b>	<b>36</b>	<b>13</b>	<b>26</b>

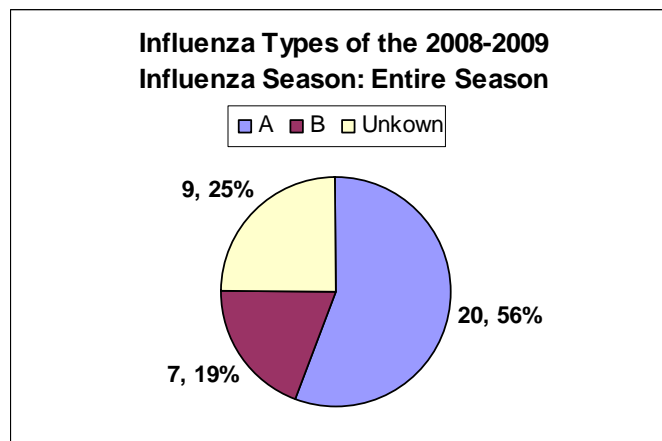
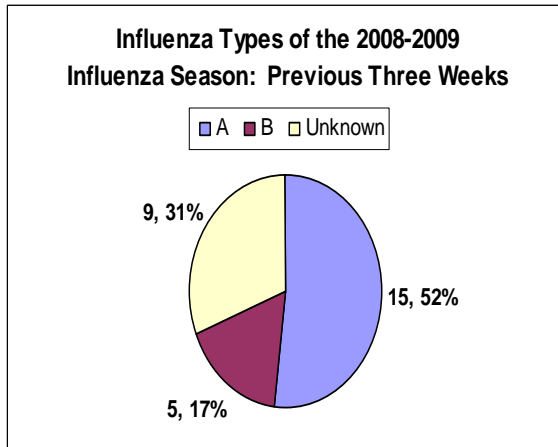
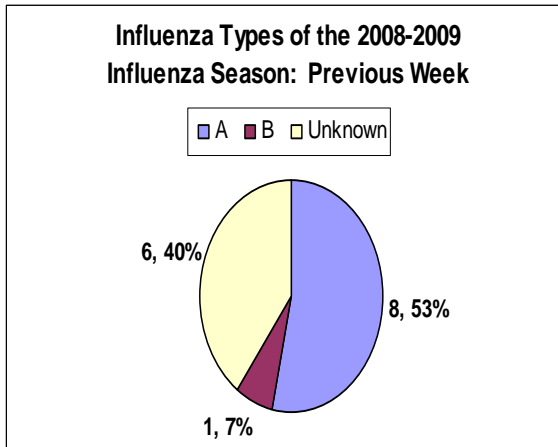
**Laboratory-Confirmed Influenza Activity by Age and Gender:**

Laboratories report positive influenza tests to ADHS.



**Laboratory Surveillance:**

Laboratories report positive influenza tests to ADHS. Data is then compiled based on influenza type and subtype.

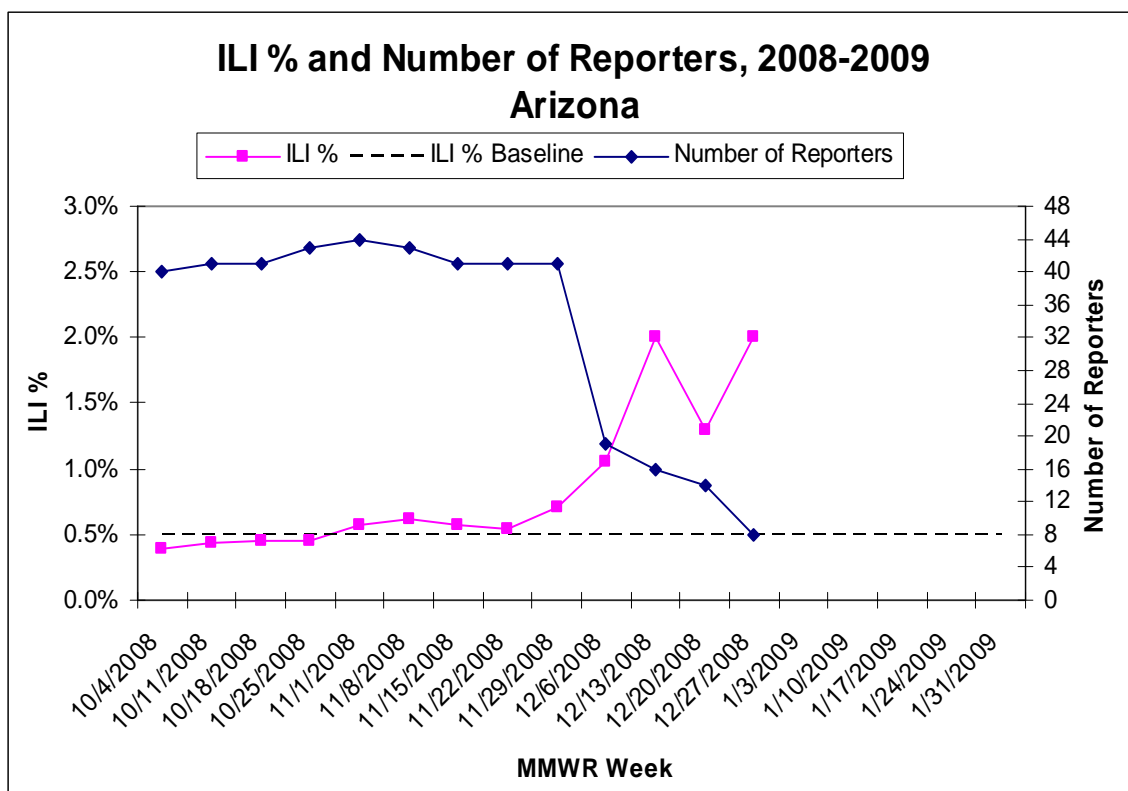


	Season (2008-2009)	Percent Total (2008-2009)	Season (2007-2008)	Percent Total (2007-2008)	Season (2006-2007)	Percent Total (2006-2007)
<b>Total</b>	36	100%	5168	100%	1663	100%
<b>Influenza A</b>	20	56%	2898	56%	1116	67%
A/H1 or A/H1N1	4	11%	184	4%	235	14%
A/H3 or A/H3N2	0	0%	234	5%	31	2%
A/Unsubtyped	0	0%	257	5%	185	11%
<b>Influenza B</b>	7	19%	1900	37%	355	21%
B/Malaysia	0	0%	0	0%	38	2%
B/Shanghai	0	0%	181	4%	5	1%
B/Unsubtyped	0	0%	325	6%	120	7%
<b>Unknown</b>	9	25%	370	7%	192	12%

### Influenza-Like Illness (ILI) Surveillance from Sentinel Providers

The proportion of patient visits to sentinel providers for ILI in the state was 1.3% for the week ending 12/20/2008 (week 51) and 2.0% for the week ending 12/27/2008 (week 52). Both values are higher than the state baseline of 0.5%. As of 1/05/2009, 14 sentinel providers reported by the end of week 51 and 8 sentinel providers reported by the end of week 52. It is important to note that participation amongst sentinel providers significantly lessens during the summer months or during the non-peak influenza activity months. Therefore, the noted ILI proportion may not be representative for the entire state of Arizona during weeks 51 and 52.

ILI is defined as a fever of at least 100°F plus either a cough or a sore throat.

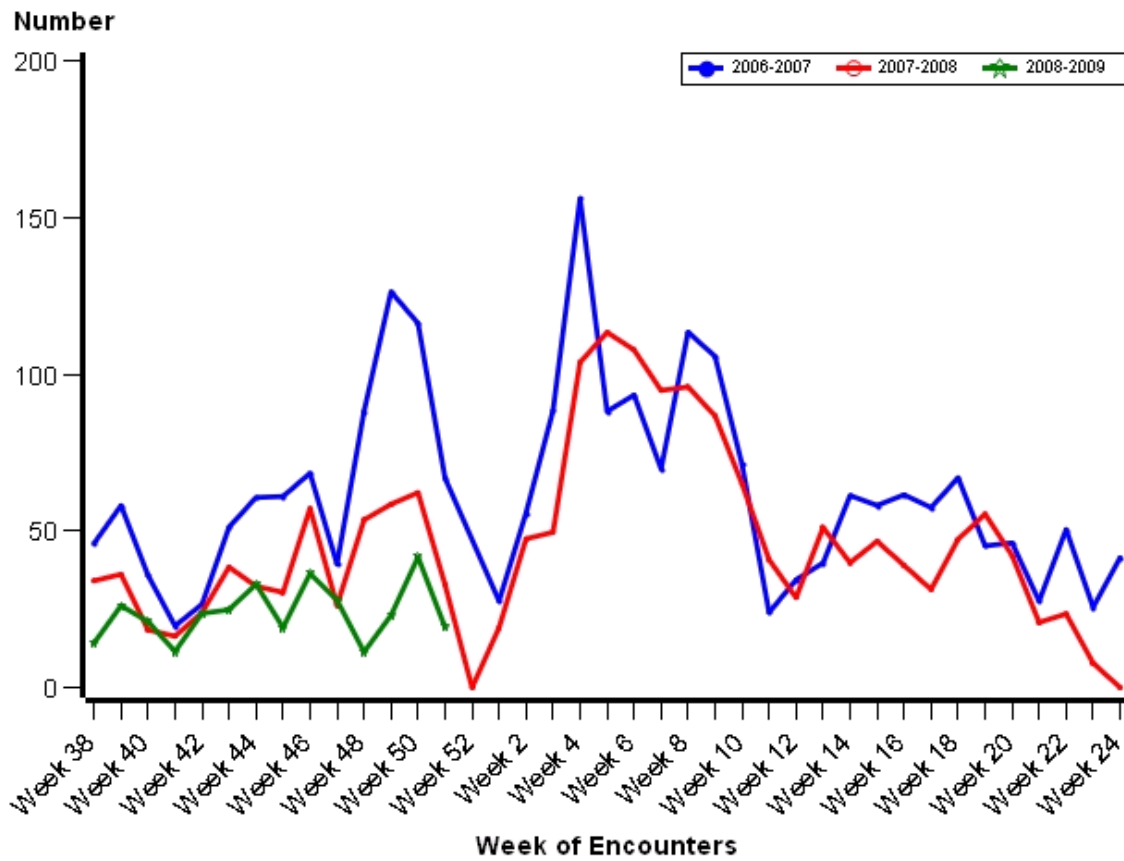


### Influenza-Like Illness (ILI) Surveillance from Participating Arizona Schools

ADHS and the Arizona School Nurse Consortium (AZSNC) developed and implemented a software program called Child Health Indicator Program (CHIP) to assist school nurses in electronic management of student health records. Currently, nurses in 331 Arizona schools use the software to collect information on student health conditions for 266 nursing diagnosis codes, including influenza-like illness (ILI), rash, and gastrointestinal illness (GI).

The graph presents the weekly trend of ILI syndromes reported among students during the school years of 2006-2007, 2007-2008, and 2008-2009. The number of school nurse encounters are not diagnosed cases of communicable diseases but are based on the nursing codes that school nurses enter to track student conditions. Also, the numbers in the graph are only from schools that used CHIP during the school year.

**Influenza-Like Illness Per School Enrollment in Arizona (per 100,000)**  
 (Data were last updated 12/22/2008)



*RSV summary is continued on the following pages.*

**RSV Activity in Arizona:**

As of 1/6/2009, 183 lab-confirmed cases were reported to ADHS during the 2008-2009 season.

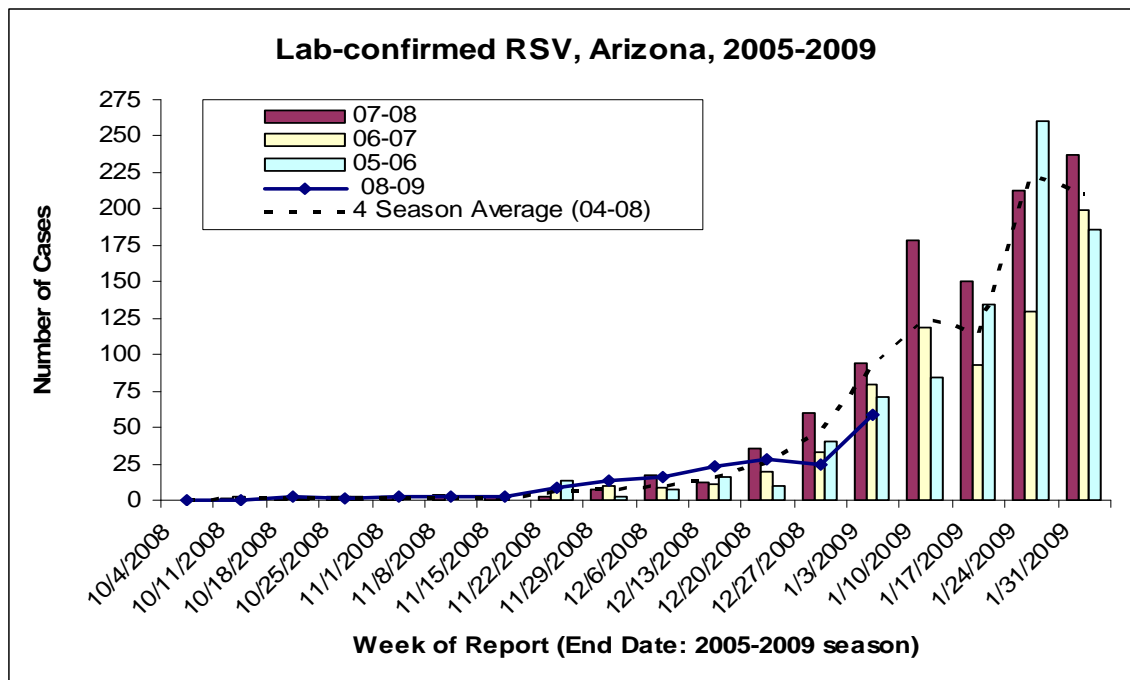
**Lab-Confirmed RSV Cases Reported by County:**

Since October 2004, laboratories have been required to report positive RSV tests to ADHS.

County	Number of Laboratory-Confirmed Cases		
	2008-2009 Season	Last Week	Last 3 Weeks
Apache	0	1	2
Cochise	2	0	1
Coconino	7	0	0
Gila	0	4	4
Graham	4	0	0
Greenlee	0	2	3
La Paz	5	30	57
Maricopa	104	0	1
Mohave	5	0	0
Navajo	0	22	43
Pima	50	0	5
Pinal	2	0	0
Santa Cruz	1	0	1
Yavapai	1	1	1
Yuma	1	0	0
Unknown	1	0	0
<b>Total</b>	<b>183</b>	<b>60</b>	<b>118</b>

**Laboratory Surveillance:**

Laboratories report positive RSV tests to ADHS.



**Laboratory-Confirmed RSV Activity by Age and Gender:**  
Laboratories report positive RSV tests to ADHS.

