

Weekly Influenza Summary:

As of 6/17/2009, a total of 5,664 laboratory-confirmed cases of influenza were reported to ADHS for the 2008-09 season, and Arizona is reporting widespread influenza activity to CDC for the week ending 6/13/2009. The recent increase in the number of laboratory-confirmed cases and overall rise in influenza activity can be attributed to the enhanced surveillance activities due to the emergence of a novel influenza A(H1N1) strain. The initial cases of the novel virus in the U.S. were announced on April 21st. For specific information regarding this new influenza A(H1N1) strain, please visit <http://www.azdhs.gov/phs/oids/epi/flu/h1n1/index.htm> or <http://www.cdc.gov/h1n1flu/>.

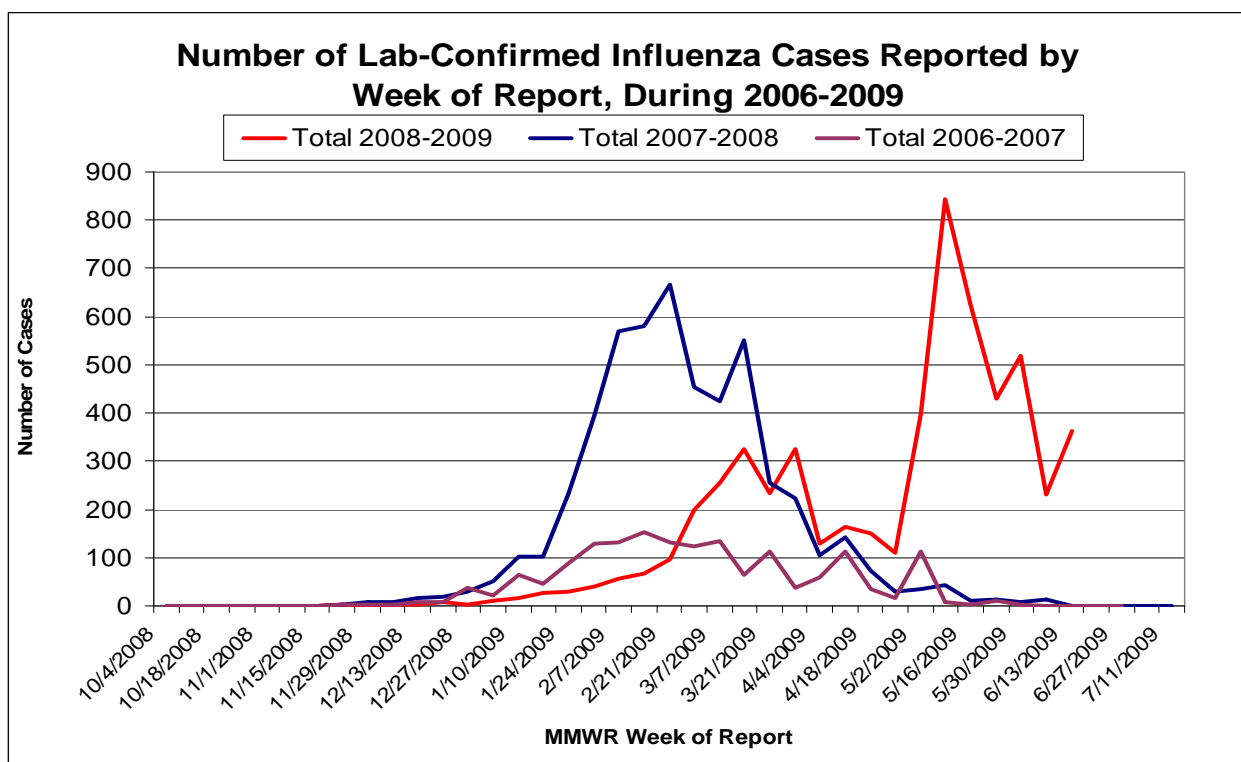
The seasonal influenza strains continue to circulate along with the novel H1N1. Cases of seasonal influenza have been reported from all fifteen Arizona counties over the course of the season. The influenza-like-illness rate is higher than the state baseline for week 22. Seven influenza-associated pediatric deaths were reported to ADHS for the current season.

Data in this report are provisional and may change as more reports are received.

National influenza surveillance data are available at the CDC’s Influenza Surveillance site (<http://www.cdc.gov/flu/weekly/fluactivity.htm>).

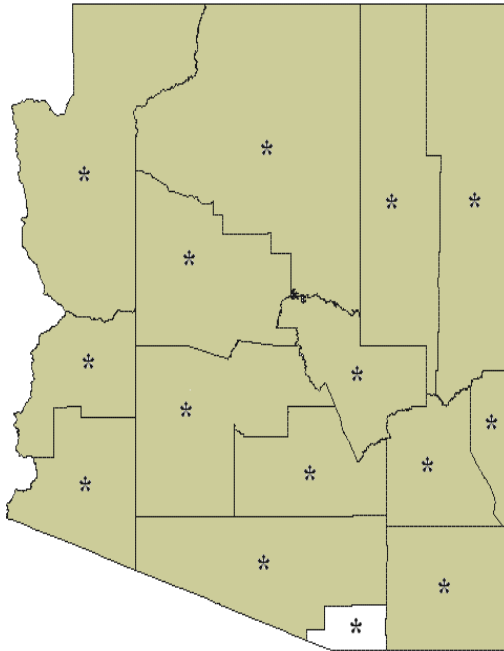
Laboratory-Confirmed Influenza Activity by Season [2006-2009]:

Arizona laboratories report positive influenza tests to ADHS. The positive cases are counted by the date of report to ADHS.



Laboratory-Confirmed Influenza Activity by County:

Arizona laboratories report positive influenza tests to ADHS. The positive cases are counted by the county of residence.



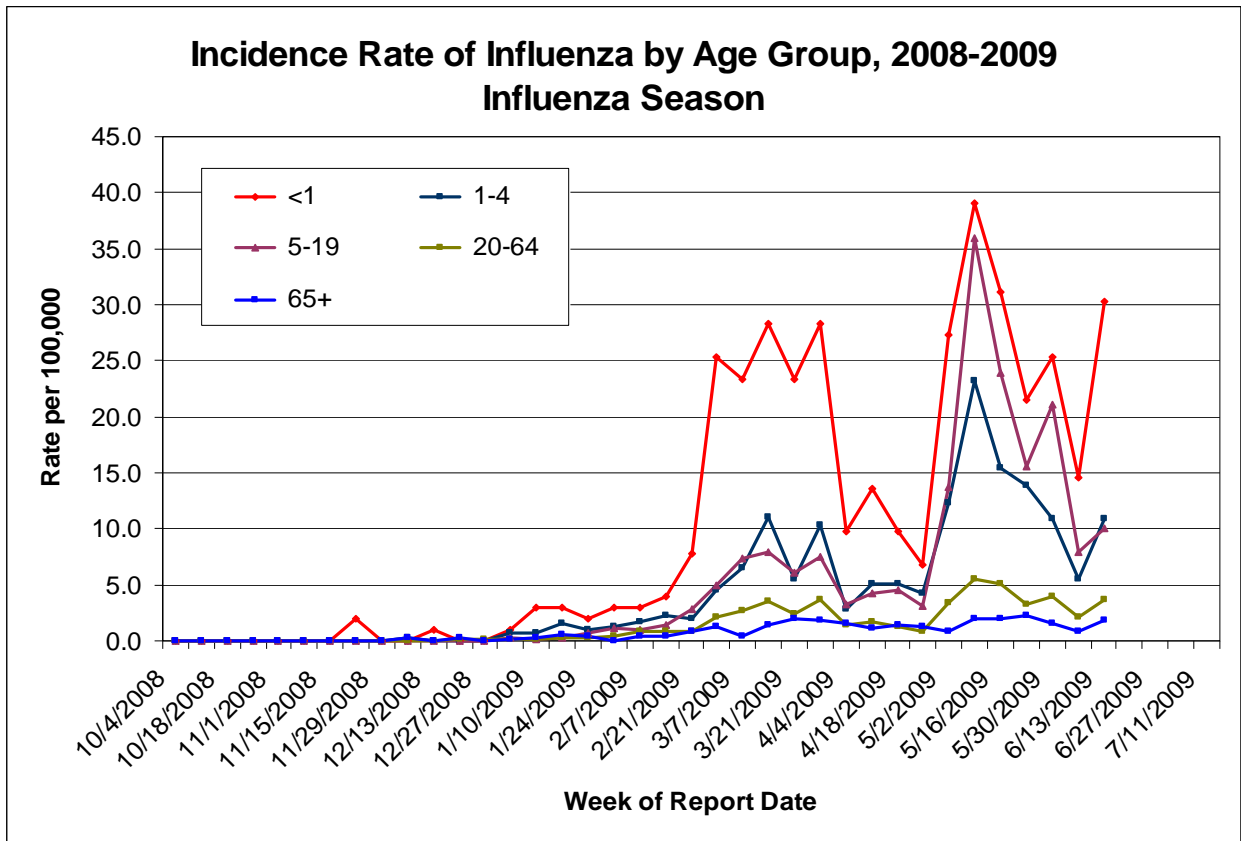
Key:

- * = Any activity reported this season
- Green = Activity reported in the previous three weeks
- White = No activity reported in the previous three weeks

County	Number of Laboratory-Confirmed Cases		
	2008-2009 Season	Last Week	Last 3 Weeks
Apache	77	0	4
Cochise	138	7	21
Coconino	211	8	18
Gila	38	0	6
Graham	147	2	19
Greenlee	36	1	1
La Paz	16	2	7
Maricopa	3,559	270	767
Mohave	38	6	14
Navajo	60	9	16
Pima	939	28	134
Pinal	201	19	69
Santa Cruz	47	0	0
Yavapai	37	5	12
Yuma	118	6	24
Unknown	3	0	0
Total	5,664	363	1,112

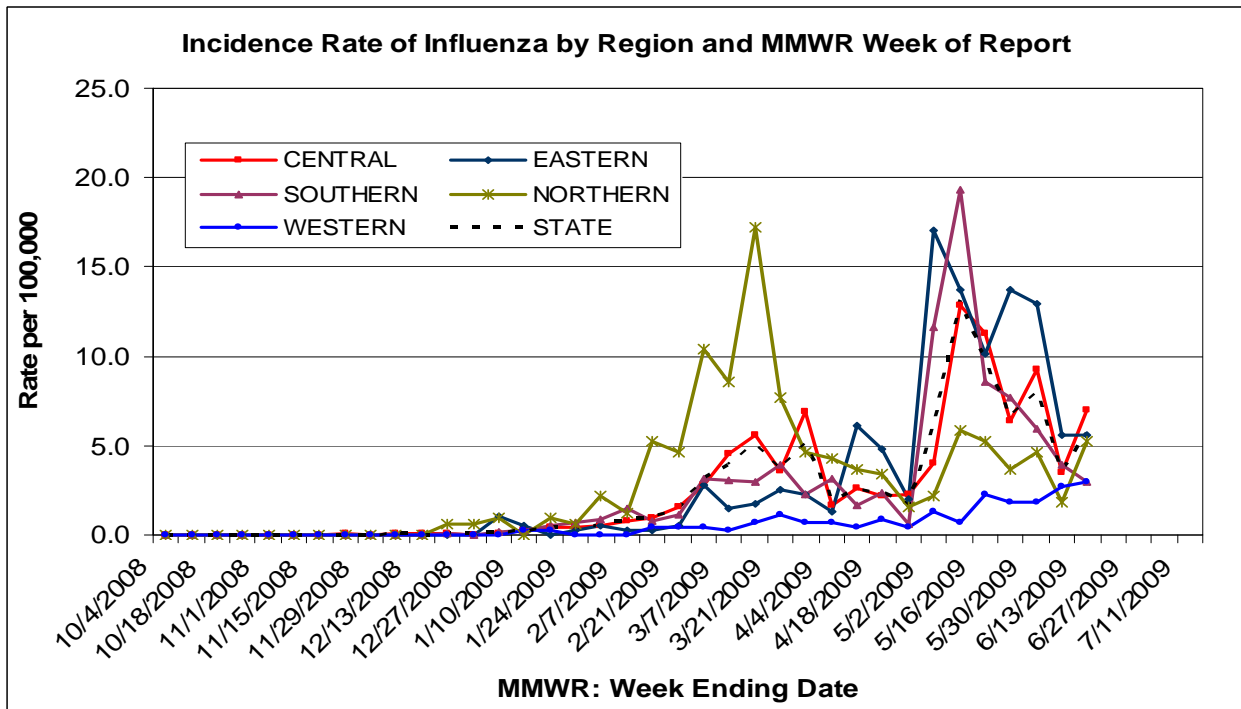
Laboratory-Confirmed Influenza Activity by Age Group:

The graph below shows the incidence rate of all lab-confirmed cases of influenza by age group for the season.

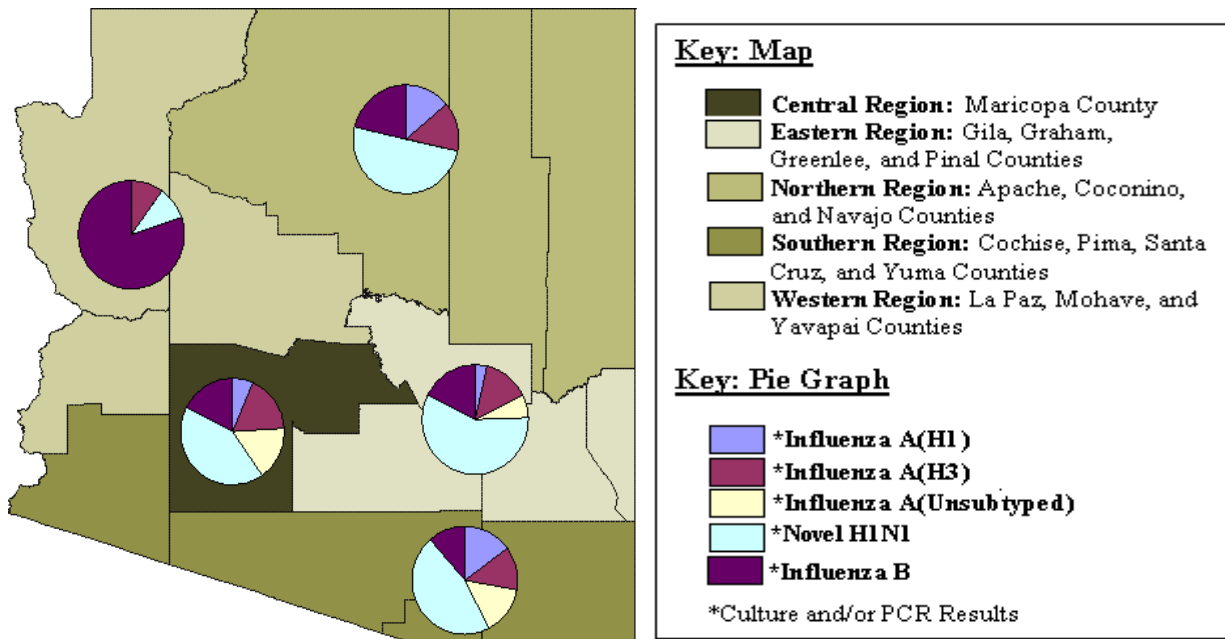


Laboratory Surveillance:

The graph below shows the incidence rate of all lab-confirmed cases of influenza by region for the season.



The results below show only culture and/or PCR results reported to ADHS from the Arizona State Laboratory or other laboratories across the state during the previous three weeks or from May 23rd through June 13th.



Region	Influenza A(H1)	Influenza A(H3)	Influenza A(Unsubtyped)	Novel Influenza H1N1	Influenza B
Central	27 (7%)	75 (17%)	70 (16%)	182 (42%)	76 (18%)
Eastern	2 (4%)	8 (14%)	4 (7%)	33 (58%)	10 (18%)
Southern	9 (15%)	8 (13%)	9 (15%)	28 (46%)	7 (11%)
Northern	2 (14%)	2 (14%)	0 (0.0%)	7 (50%)	3 (21%)
Western	0 (0%)	1 (10.0%)	0 (0%)	1 (10%)	8 (80%)

Laboratories report positive influenza tests to ADHS. Data are then compiled based on influenza type from all positive laboratory tests.

	Season (2008-2009)	Percent Total (2008-2009)	Season (2007-2008)	Percent Total (2007-2008)	Season (2006-2007)	Percent Total (2006-2007)
Total*	5,664	100%	5,168	100%	1,663	100%
Influenza A*	3,869	68%	2,898	56%	1,116	67%
A/H1 †	361	6%	184	4%	235	14%
A/H3 †	267	5%	234	5%	31	2%
A/Type unknown†	348	6%	257	5%	185	11%
Influenza B*	1,508	27%	1,900	37%	355	21%
B/Victoria lineage †	96	2%	0	0%	38	2%
B/Yamagata lineage †	0	0%	181	4%	5	1%
B/Unsubtyped †	352	6%	325	6%	120	7%
Unknown*	287	5%	370	7%	192	12%

* Data for the bolded categories include all tests.

† Data for the subcategories include only culture and PCR tests conducted at the Arizona State Laboratory or other reporting laboratories.

	Arizona† (2008-2009)	Percent Total (2008-2009)	Mountain Region* (2008-2009)	Percent Total (2008-2009)	Nationwide* (2008-2009)	Percent Total (2008-2009)
Total	1,471	100%	2,145	100%	25,925	100%
Influenza A	1,023	70%	1,718	80%	17,239	66%
A/H1	361	35%	679	40%	6,223	36%
A/H3	173	17%	201	12%	750	4%
A/Unsubtyped	348	34%	838	49%	10,266	60%
Influenza B	448	30%	427	20%	8,686	34%

† Data represents the cumulative results for all culture and PCR tests conducted at the Arizona State Laboratory or other reporting laboratories within the state of Arizona through MMWR 22 or week ending 6/6/2009.

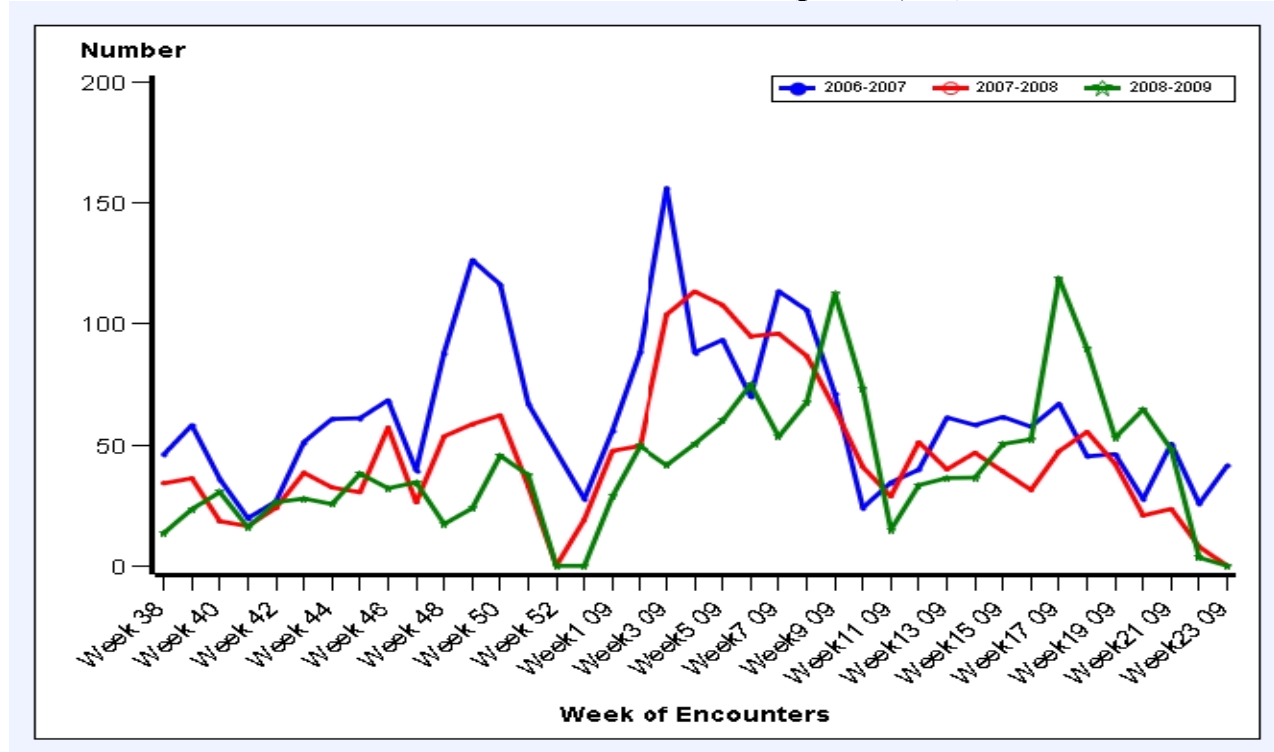
* Data represents the cumulative results for all identified influenza isolates within the respective category through MMWR 15 or week ending 4/21/2009.

Influenza-Like Illness (ILI) Surveillance from Participating Arizona Schools:

The software program Child Health Indicator Program (CHIP) assists school nurses in electronic management of student health records. Currently, nurses in more than 300 Arizona schools use CHIP to collect information on student health conditions for 266 nursing diagnosis codes, including influenza-like illness (ILI), rash, and gastrointestinal illness (GI).

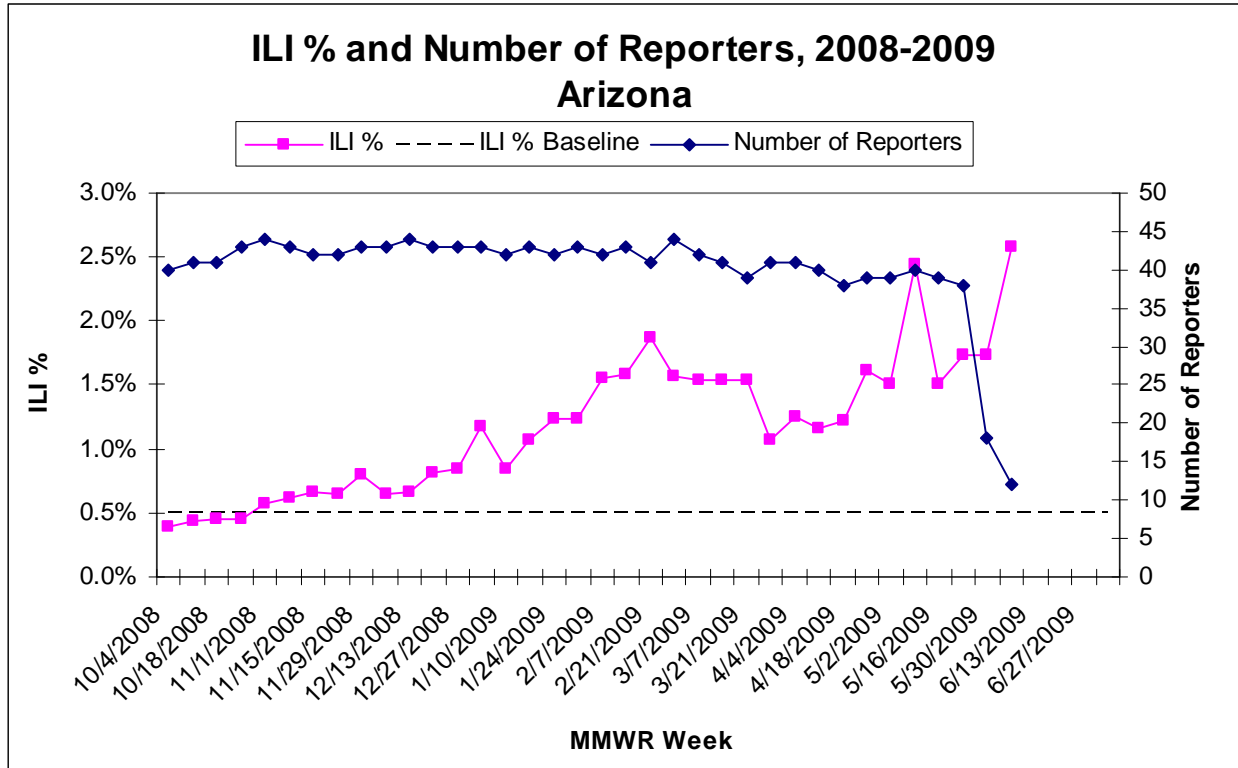
The graph presents the weekly trend of ILI reported among students during the school years of 2006-2007, 2007-2008, and 2008-2009. School nurse encounters are not diagnosed cases of communicable diseases but are based on the nursing codes that school nurses enter to track student conditions. Also, the numbers in the graph are only from schools that used CHIP during the school year.

Influenza-Like Illness Per School Enrollment in Arizona (per 100,000)



Influenza-Like Illness (ILI) Surveillance from Sentinel Providers:

The proportion of patient visits to sentinel providers for ILI in the state was 2.6% for the week ending 6/6/2009 (week 22). This value is much higher than the state baseline of 0.5%. As of 6/11/2009, 12 sentinel providers reported by the end of week 22. Due to the lower number of providers reporting during the previous week, the ILI proportion may not be representative for the entire state of Arizona. ILI is defined as a fever of at least 100°F plus either a cough or a sore throat.



Mortality Surveillance:

Seven influenza-associated pediatric deaths have been reported to ADHS during the 2008-2009 influenza season. Five individuals were infected with influenza A and two with influenza B. One case died in February, two in April, three in May, and one in June.

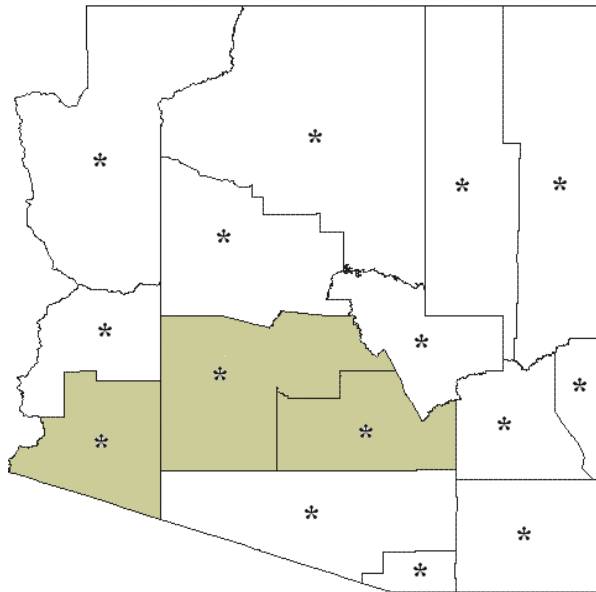
Please see the following pages for the weekly RSV summary.

Weekly RSV Summary:

As of 6/17/2009, a total of 2,929 lab-confirmed cases were reported to ADHS during the 2008-2009 season.

Lab-Confirmed RSV Cases Reported by County:

Since October 2004, laboratories have been required to report positive RSV tests to ADHS.



Key:

* = Any activity reported this season

Green = Activity reported in the previous three weeks

White = No activity reported in the previous three weeks

County	Number of Laboratory-Confirmed Cases		
	2008-2009 Season	Last Week	Last 3 Weeks
Apache	84	0	0
Cochise	53	0	0
Coconino	101	0	0
Gila	28	0	0
Graham	5	0	0
Greenlee	0	0	0
La Paz	9	0	0
Maricopa	1,926	1	4
Mohave	87	0	0
Navajo	95	0	0
Pima	269	0	0
Pinal	221	5	19
Santa Cruz	11	0	0
Yavapai	17	0	0
Yuma	23	0	1
Unknown	0	0	0
Total	2,929	6	24