

**Synopsis:**

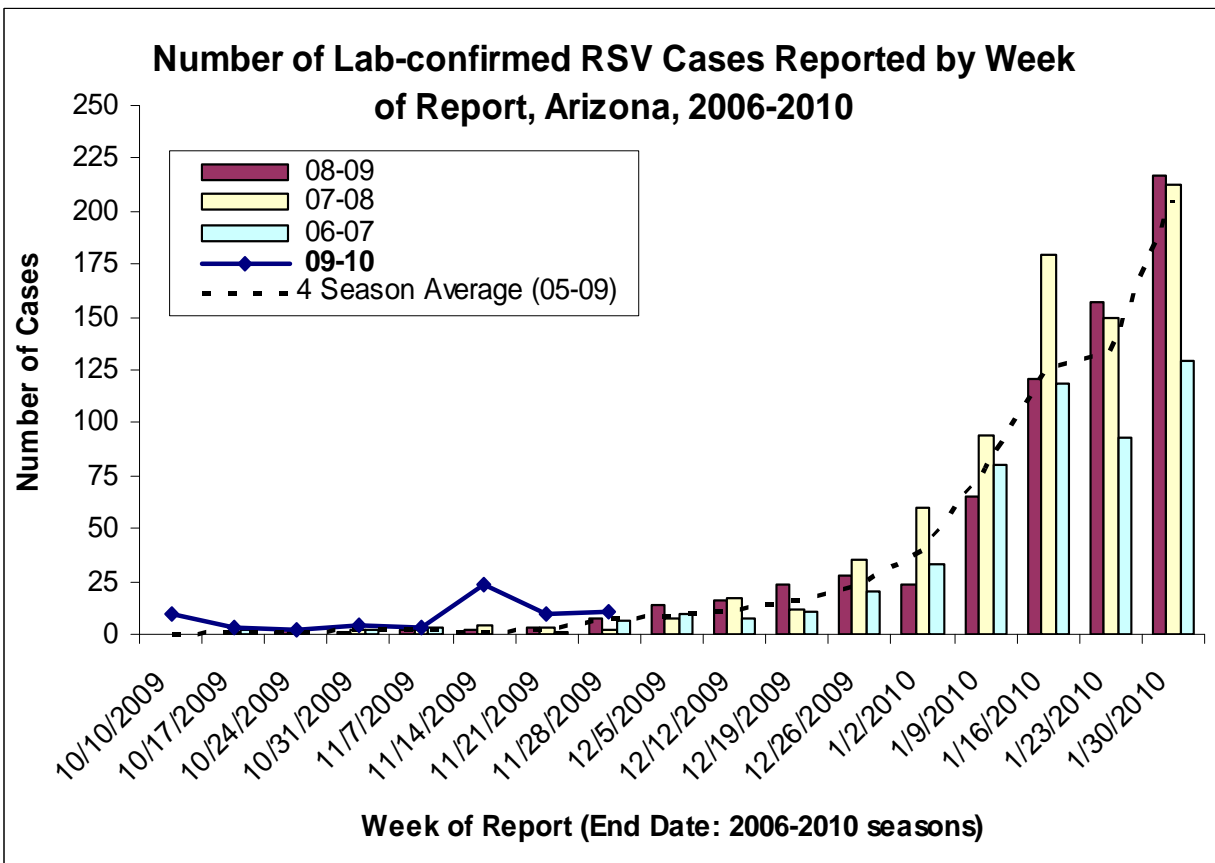
During the previous week, respiratory syncytial virus (RSV) activity slightly increased in Arizona.

**RSV activity highlights:**

- 11 laboratory-confirmed cases of RSV were reported last week; 66 laboratory-confirmed cases of RSV were reported during the 2009-2010 season.
- Four counties (Coconino, Maricopa, Mohave, and Yavapai) reported lab-confirmed cases of RSV during the previous week; 9 of 15 counties reported lab-confirmed cases of RSV during the 2009-2010 season.
- The cases included here only reflected laboratory-confirmed cases that have been reported to the health department. There may be additional cases in the community that have not been tested.
- Data in this report are provisional and may change as more reports are received.

**Laboratory-Confirmed RSV Activity by Season [2006-2010]:**

Positive influenza tests are reported to ADHS. These include many types of test (rapid tests, DFA, culture, etc.).



## Lab-Confirmed RSV Cases Reported by County:

Since October 2004, laboratories have been required to report positive RSV tests to ADHS.

County	Number of Laboratory-Confirmed Cases		
	2009-2010 Season	Last Week	Last 3 Weeks
Apache	1	0	1
Cochise	1	0	0
Coconino	3	1	3
Gila	0	0	0
Graham	1	0	0
Greenlee	0	0	0
La Paz	0	0	0
Maricopa	18	4	14
Mohave	16	5	11
Navajo	0	0	0
Pima	4	0	1
Pinal	19	0	12
Santa Cruz	0	0	0
Yavapai	2	1	1
Yuma	0	0	0
Unknown	1	0	1
<b>Total</b>	<b>66</b>	<b>11</b>	<b>44</b>

## By Age Group:

