

Arizona Medical Marijuana Program August 2017 Monthly Report

In November 2010, Arizona voters passed the Arizona Medical Marijuana Act (AMMA), A.R.S. §36-2801 *et seq.* The AMMA went into effect on April 14, 2011, making Arizona the fourteenth state to adopt a medical marijuana law. The AMMA designates the Arizona Department of Health Services (ADHS) as the licensing and issuing authority for the Arizona Medical Marijuana Program.

The AMMA monthly report highlights the most current program statistics. This includes data on active medical marijuana cardholders as well as transaction data from the sale of medical marijuana at non-profit medical marijuana dispensaries. Tables 1 through 6 and Figures 1 through 3 reflect data that are point in time. Table 7 and Figure 4 are data from the month of August, 2017. The Year-To-Date section which follows shows cumulative applications and approvals for 2017. For further information and statistics, please reference the Arizona Medical Marijuana Annual Report.

Table 1. Arizona Medical Marijuana Active Qualifying Patients, Designated Caregivers and Dispensary Agents Profile

Active Cardholder's Profile	Totals	Percent Total
1. Qualifying patients (QPs)	139,824	96.45%
2. Caregivers (CGs)	917	0.63%
3. Dispensary Agents (DA)	4,233	2.92%
Total	144,974	100.00%

*Note: For caregivers and dispensary agents, these data reflect unique individuals, not the number of cards.

Table 2. Arizona Medical Marijuana Active Qualifying Patients Profile

Application profile of qualifying patients	Totals	Percent Total
1. New applications	91,563	65.48%
2. Renewal applications	42,363	30.30%
3. Changed demographics	2,578	1.84%
4. Added Caregivers	242	0.17%
5. Change Dup	3,051	2.18%
6. Replaced Caregivers	24	0.02%
7. Removed Caregivers	3	0.00%
Total	139,824	100.00%

Approximately 11 percent (n = 15,829) of the active cardholders were determined to be SNAP eligible. Of the 15,829 that were determined to be eligible, 7,588 (~48%) were females and 8,241 (~52%) were males.

Table 3. Arizona Medical Marijuana Active Qualifying Patients Characteristics

Characteristics of Active Cardholders who are Qualified Patients	Totals (N =139,824)	Percent Total
Patient Age-groups		
Less than 18 years	201	0.14%
18 to 30 years	34,278	24.51%
31 to 40 years	28,876	20.65%
41 to 50 years	21,823	15.61%
51 to 60 years	23,745	16.98%
61 to 70 years	23,053	16.49%
71 to 80 years	6,427	4.60%
81 and older	1,421	1.02%
Patient Gender		
Male	86,724	62.02%
Female	53,100	37.98%

Figure 1. Arizona Medical Marijuana Active Qualifying Patients Characteristics by Gender and Age (N = 139,824)

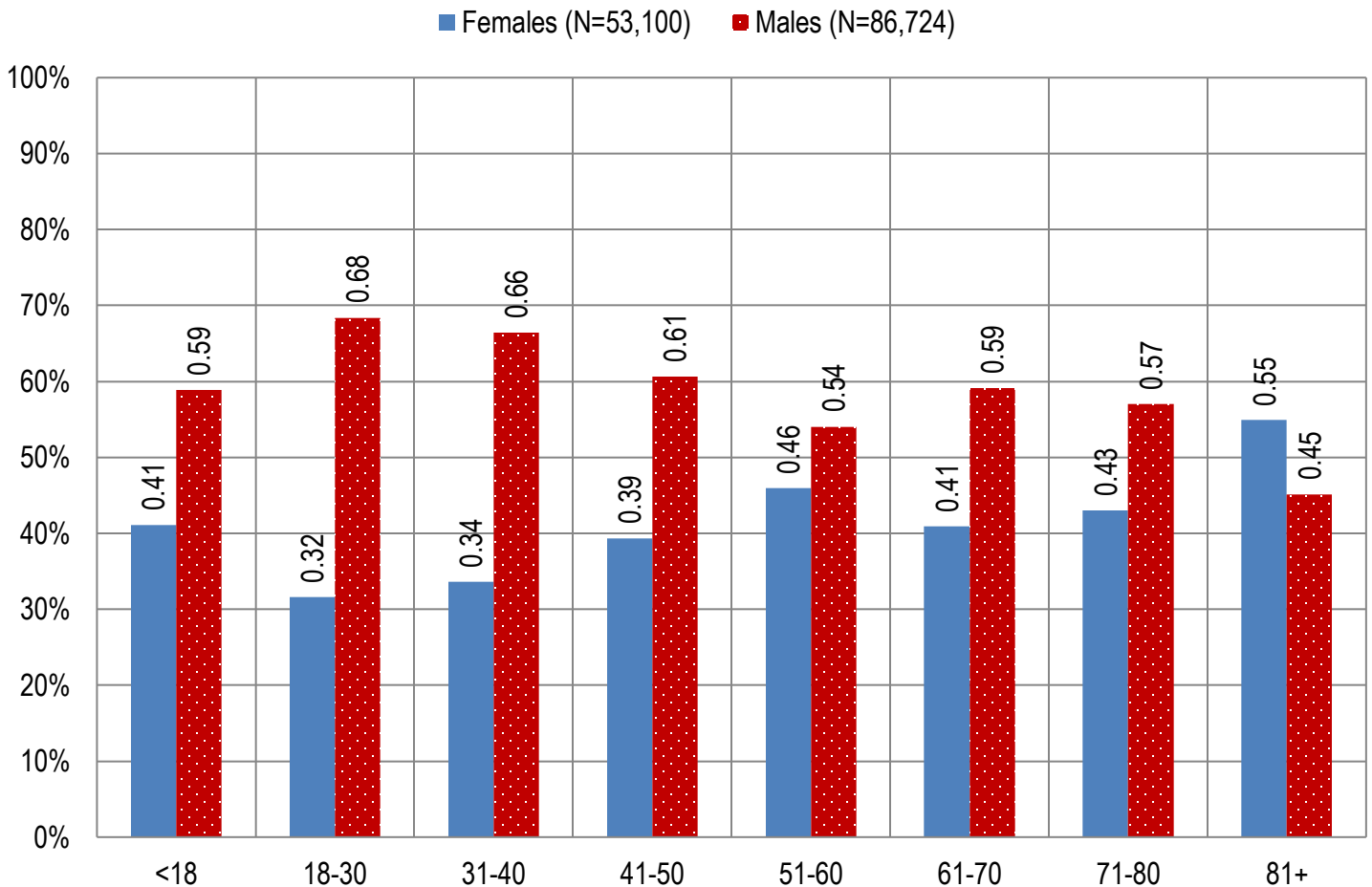


Table 4. Arizona Medical Marijuana Active Qualifying Patients Medical Condition Profile

Patient medical condition profile of Active Cardholders [¶]	Totals	Percent Total
Alzheimer's	64	0.05%
Cachexia	124	0.09%
Cancer	3,596	2.57%
Chronic Pain	11,7439	83.99%
Crohn's Disease	500	0.36%
Glaucoma	960	0.69%
Hepatitis C	898	0.64%
HIV/AIDS	589	0.42%
Muscle Spasms	1,112	0.80%
Nausea	769	0.55%
Post-Traumatic Stress Disorder (PTSD)	1,903	1.36%
Sclerosis	42	0.03%
Seizures	1,114	0.80%
Two Or More Conditions	10,714	7.66%
TOTAL	139,824	100.00%

[¶]Unique debilitating conditions

Figure 2. Arizona Medical Marijuana Active Designated Caregiver Characteristics by Gender and Age (N = 917)

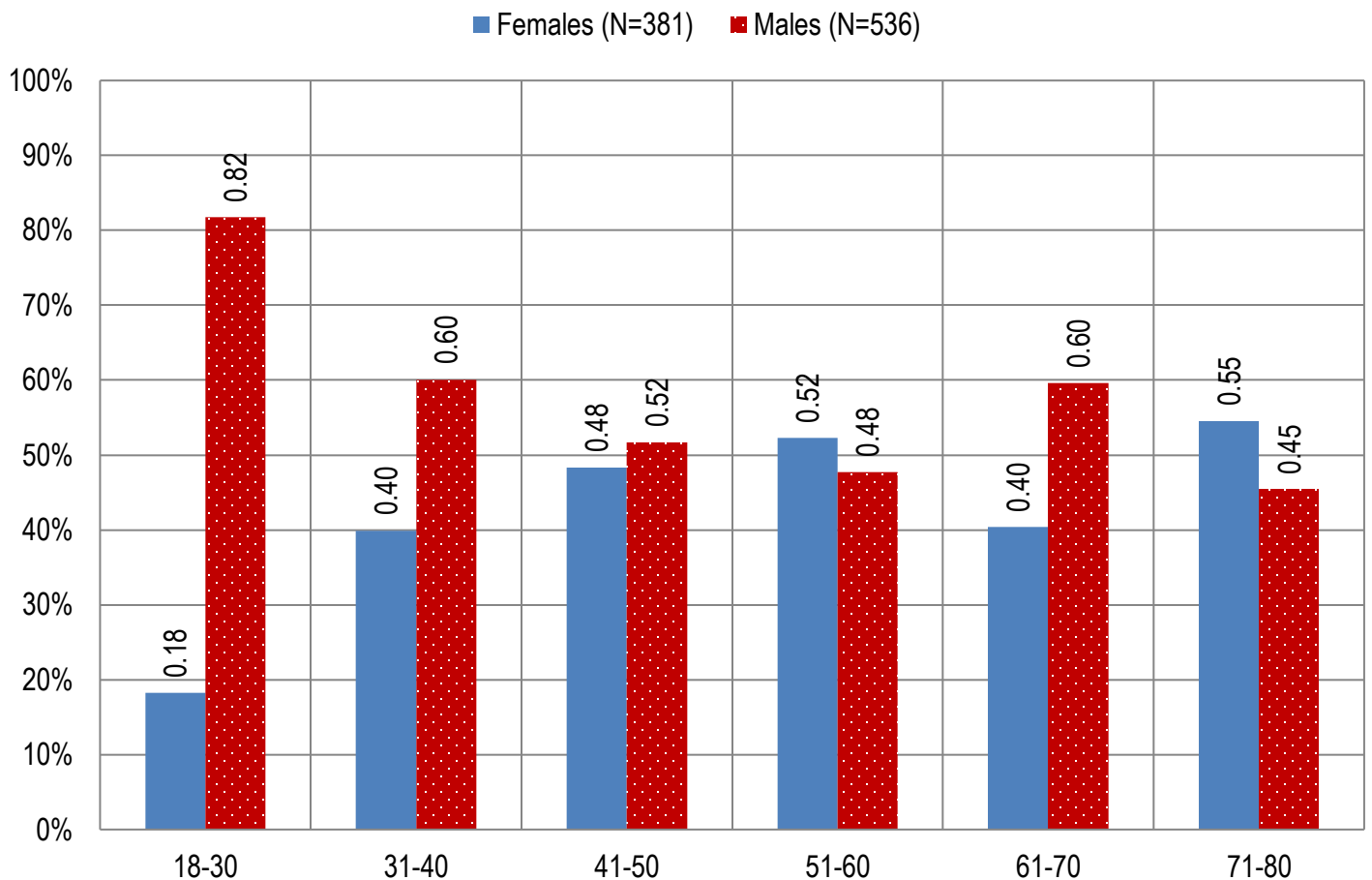


Table 5. Arizona Medical Marijuana Active Qualifying Patients and Designated Caregivers Authorized for Cultivation

Active cardholders cultivation status	Totals	Percent Total
Qualifying patients (n =139,824)	1,626	1.16%
Caregivers (n =917)	399	43.51%

Table 6. Frequency of Qualifying Patients, Caregivers, and Dispensary Agents by County of Residence

County	Qualifying Patients	Caregivers	Dispensary Agents*
Apache County	797	Count Under 20	Count Under 20
Cochise County	2,050	Count Under 20	107
Coconino County	3,110	34	104
Gila County	1,362	Count Under 20	36
Graham County	554	Count Under 20	Count Under 20
Greenlee County	155	Count Under 20	Count Under 20
La Paz County	373	Count Under 20	25
Maricopa County	88,276	547	2,506
Mohave County	5,033	Count Under 20	128
Navajo County	1,855	Count Under 20	245
Pima County	19,322	121	442
Pinal County	7,625	49	167
Santa Cruz County	415	Count Under 20	78
Yavapai County	7,404	62	330
Yuma County	1,493	Count Under 20	Count Under 20
TOTAL	139,824	917	4,233

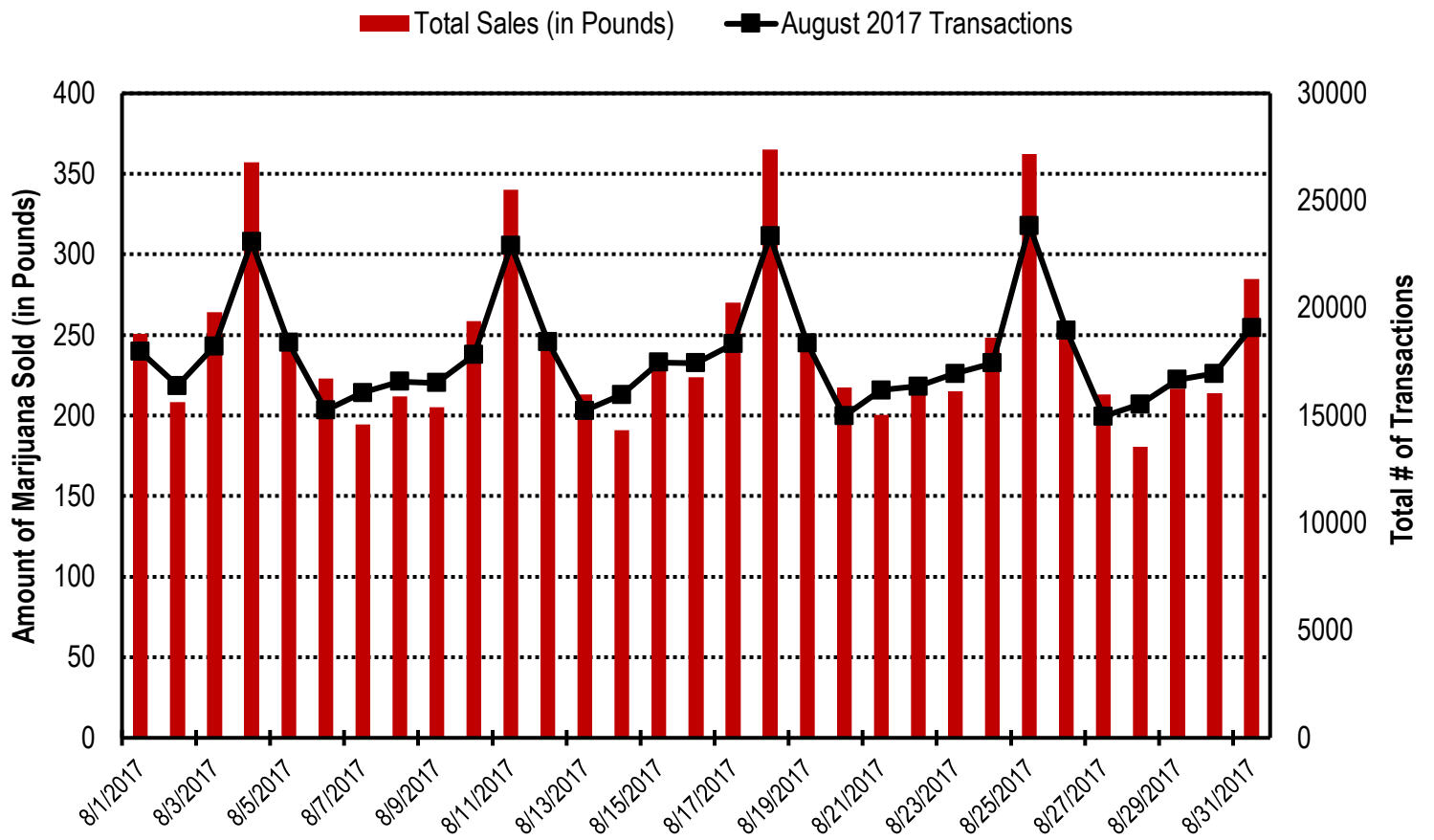
* 33 Dispensary Agents are located outside of Arizona.

Table 7. Type and Amount of Transactions at Medical Marijuana Dispensaries in August, 2017

Type of Transaction [†]	Ounces (oz.)	Pounds
Marijuana	111,832.80	6,989.55
Marijuana Edible	4,933.30	308.33
Marijuana Other	4,131.89	258.24
Total Marijuana Sold	120,897.99	7,556.12

[†]Amounts have been rounded and may not added to exact totals

Figure 4. Daily Transactions and Amount of Marijuana Sold in August, 2017



YEAR TO DATE

Table 1a. Arizona Medical Marijuana Applications Received- Application Profile

Applications Received Cardholder Profile	Totals	Percent Total
Qualifying patients (QPs)	110,468	94.38%
Caregivers (CGs)	1,533	1.31%
Dispensary Agents (DA)	5,042	4.31%
Total	117,043	100.00%

*Note: For caregivers and dispensary agents, these data reflect unique individuals, not the number of cards.

Table 1b. Arizona Medical Marijuana Licensed Qualifying Patients, Designated Caregivers and Dispensary Agents Profile

Applications Approved Cardholder Profile	Totals	Percent Total
Qualifying patients (QPs)	108,995	94.65%
Caregivers (CGs)	1,440	1.25%
Dispensary Agents (DA)	4,718	4.10%
Total	115,153	100.00%

*Note: For caregivers and dispensary agents, these data reflect unique individuals, not the number of cards.

Table 2. Arizona Medical Marijuana Licensed Qualifying Patient Profile

Applications Received for Qualifying Patients	Totals	Percent Total
New applications	69,004	63.31%
Renewal applications	33,599	30.83%
Changed demographics	2,594	2.38%
Added Caregivers	310	0.28%
Change Dup	3,450	3.17%
Replaced Caregivers	33	0.03%
Removed Caregivers	5	0.00%
Total	108,995	100.00%

Table 3a. Arizona Medical Marijuana Applications Received- Patient Characteristics

Characteristics of Applications Received who are Qualified Patients	Totals (N = 110,468)	Percent Total
Patient Age-groups		
Less than 18 years	168	0.15%
18 to 30 years	29,368	26.59%
31 to 40 years	23,047	20.86%
41 to 50 years	16,849	15.25%
51 to 60 years	18,510	16.76%
61 to 70 years	16,985	15.38%
71 to 80 years	4,577	4.14%
81 and older	964	0.87%
Patient Gender		
Male	68,327	61.85%
Female	42,141	38.15%

Table 3b. Arizona Medical Marijuana Licensed Qualifying Patient Characteristics

Characteristics of Approved Applications who are Qualified Patients	Totals (N = 108,995)	Percent Total
Patient Age-groups		
Less than 18 years	161	0.15%
18 to 30 years	29,029	26.63%
31 to 40 years	22,763	20.88%
41 to 50 years	16,615	15.24%
51 to 60 years	18,210	16.71%
61 to 70 years	16,777	15.39%
71 to 80 years	4,497	4.13%
81 and older	943	0.87%
Patient Gender		
Male	67,502	61.93%
Female	41,493	38.07%

Figure 1a. Arizona Medical Marijuana Applications Received- Patient Characteristics by Gender and Age (N =110,468)

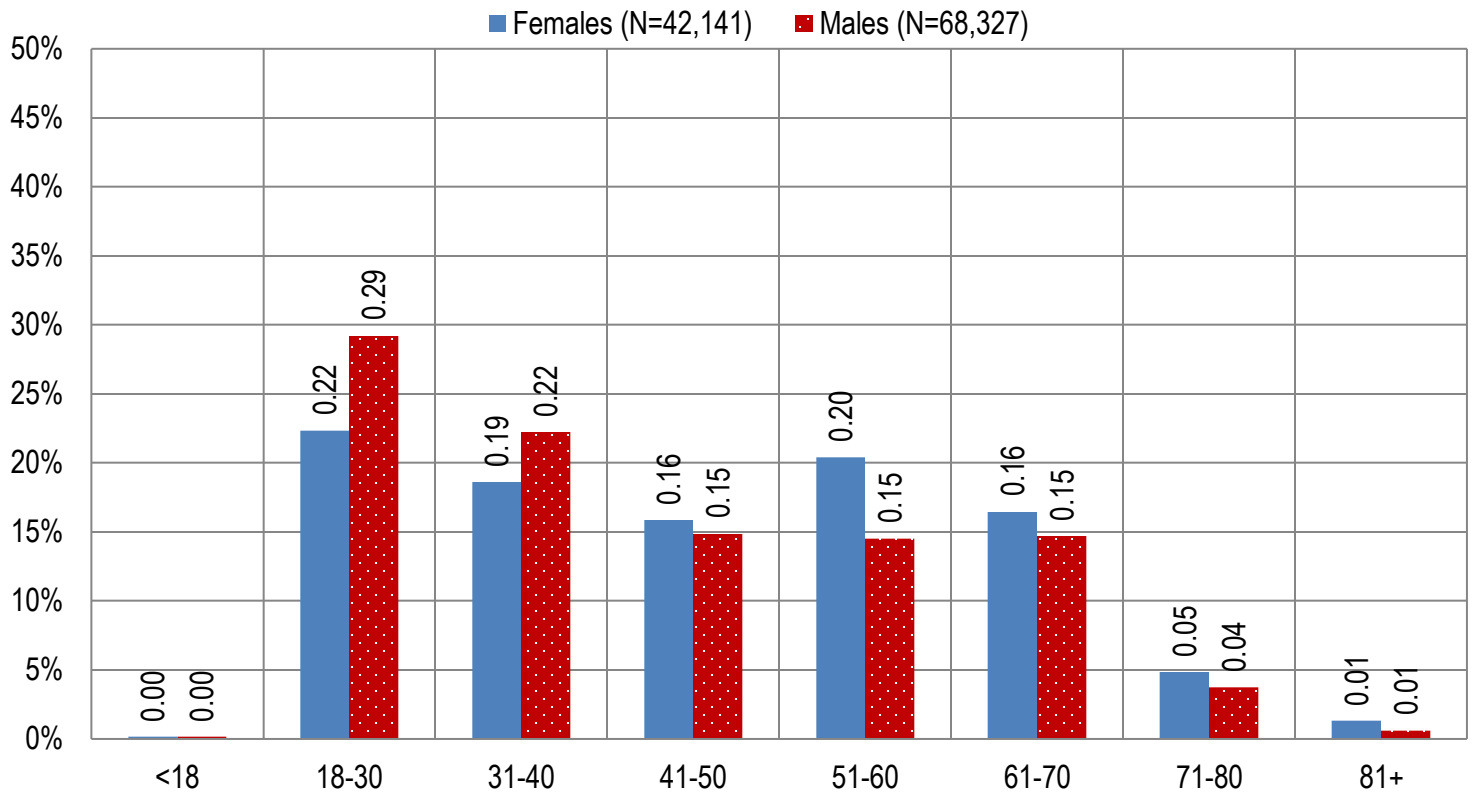


Figure 1b. Arizona Medical Marijuana Licensed Qualifying Patient Characteristics by Gender and Age (N =108,995)

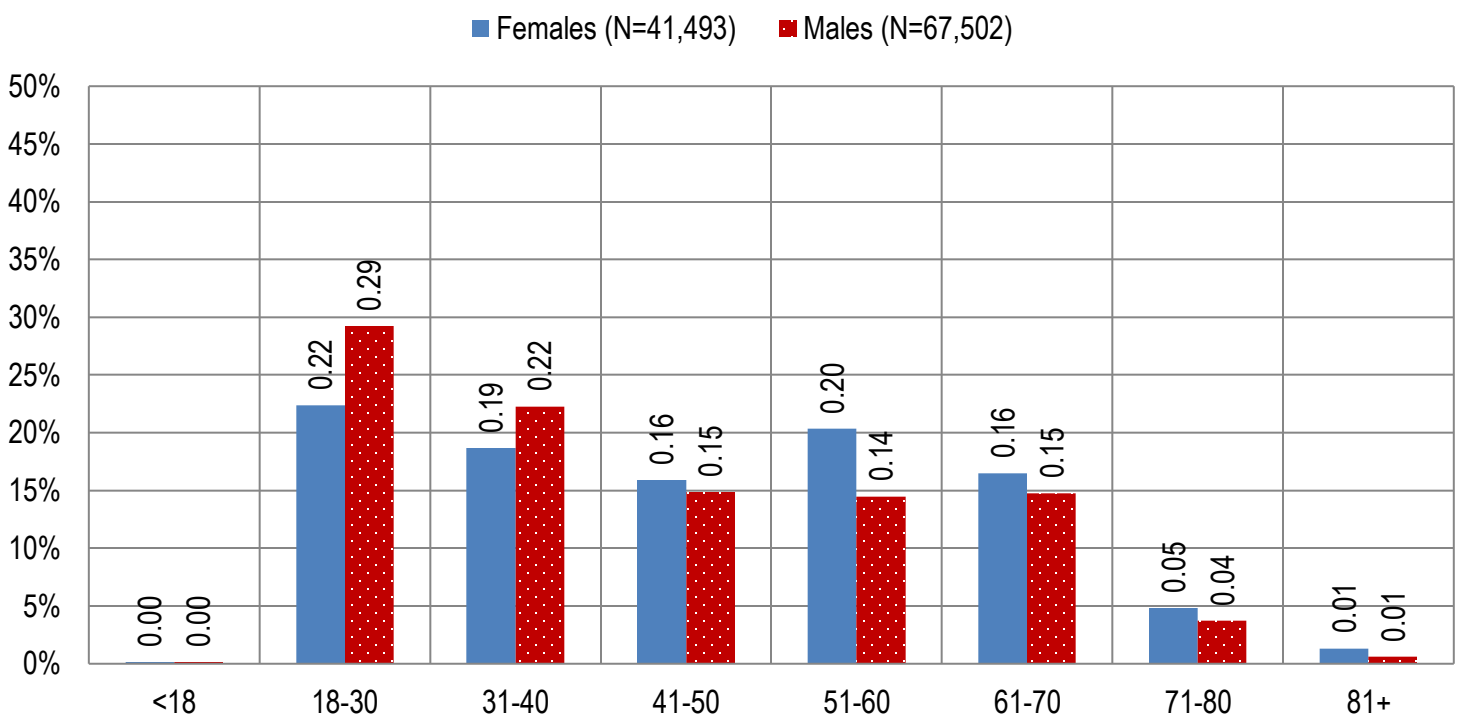


Figure 2a. Arizona Medical Marijuana Applications Received- Caregivers Characteristics by Gender and Age

(N = 1,553)

■ Females (N=451) ■ Males (N=1,082)

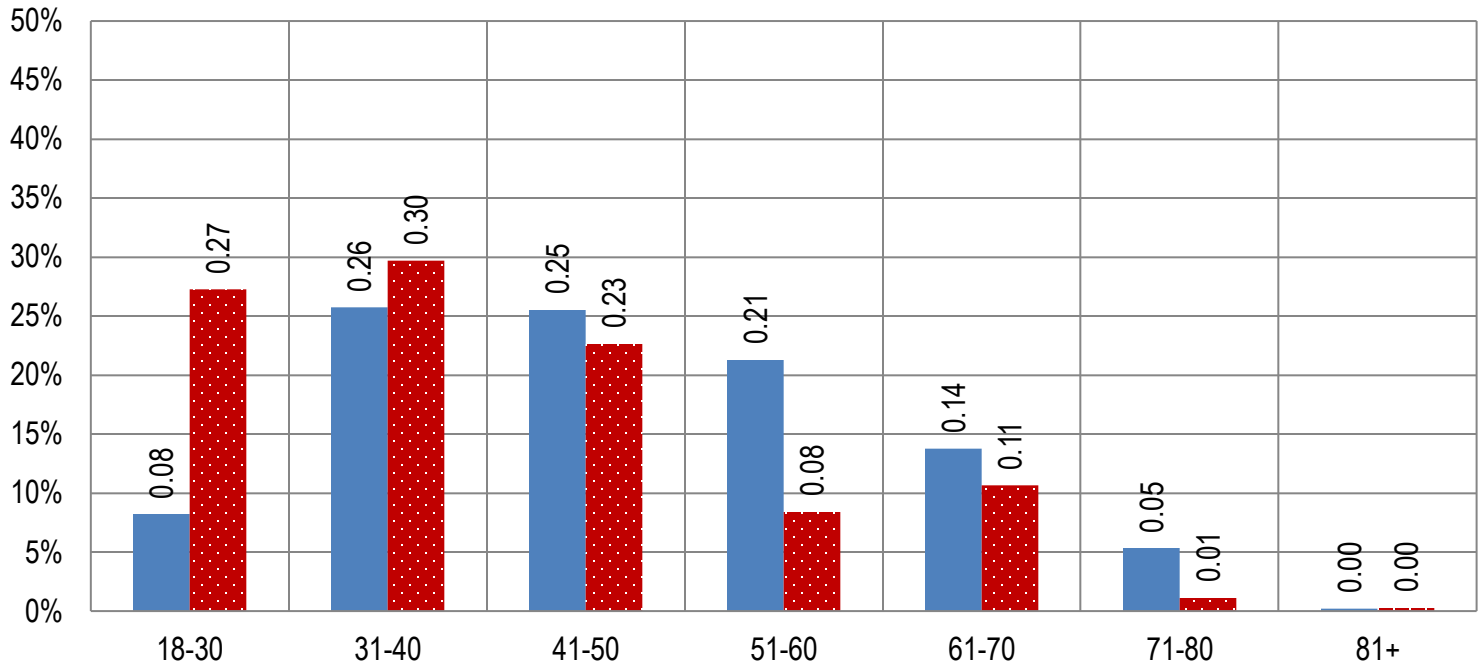


Figure 2b. Arizona Medical Marijuana Licensed Caregivers Characteristics by Gender and Age

(N = 1,440)

■ Females (N=421) ■ Males (N=1,019)

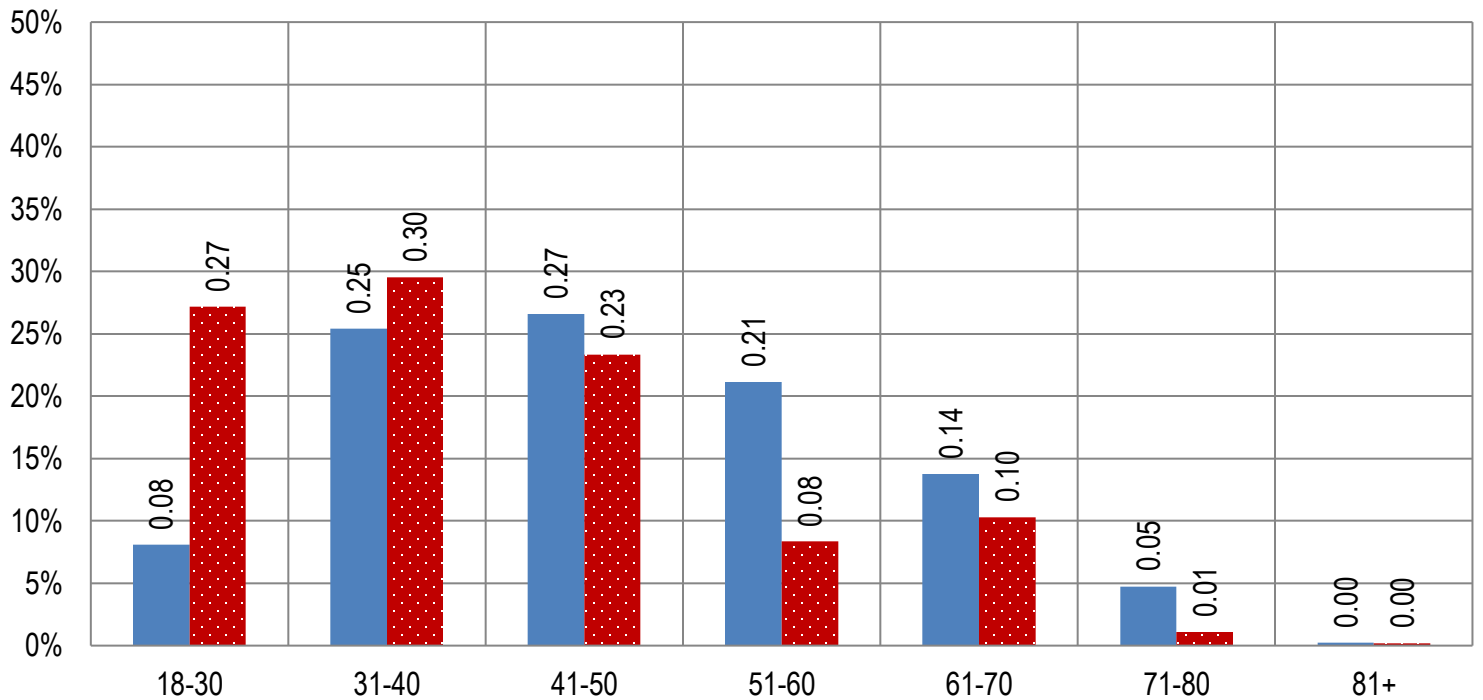


Table 4a. Arizona Medical Marijuana Applications Received- Patient Medical Conditions Profile

Patient medical condition profile of Applications Received [¶]	Totals	Percent Total
Alzheimer's	45	0.04%
Cachexia	83	0.08%
Cancer	2,631	2.38%
Chronic Pain	93,428	84.57%
Crohn's Disease	372	0.34%
Glaucoma	709	0.64%
Hepatitis C	711	0.64%
HIV/AIDS	452	0.41%
Muscle Spasms	954	0.86%
Nausea	588	0.53%
Post-Traumatic Stress Disorder (PTSD)	1,502	1.36%
Sclerosis	33	0.03%
Seizures	863	0.78%
Two Or More Conditions	8,097	7.33%
TOTAL	110,468	100.00%

[¶]Unique debilitating conditions

Table 4b. Arizona Medical Marijuana Licensed Qualifying Patients Medical Conditions Profile

Patient medical condition profile of Applications Approved [¶]	Totals	Percent Total
Alzheimer's	43	0.04%
Cachexia	80	0.07%
Cancer	2,591	2.38%
Chronic Pain	92,216	84.61%
Crohn's Disease	369	0.34%
Glaucoma	705	0.65%
Hepatitis C	702	0.64%
HIV/AIDS	442	0.41%
Muscle Spasms	938	0.86%
Nausea	577	0.53%
Post-Traumatic Stress Disorder (PTSD)	1,478	1.36%
Sclerosis	33	0.03%
Seizures	851	0.78%
Two Or More Conditions	7,970	7.31%
TOTAL	108,995	100.00%

[¶]Unique debilitating conditions

Table 5a. Arizona Medical Marijuana Applications Received for Applicants Seeking Authorization to Cultivate

Applications Received for cardholders with cultivation status	Totals	Percent total
Qualifying patients (n = 110,468)	1,413	1.28%
Caregivers (n = 1,533)	0	0.00%

Table 5b. Arizona Medical Marijuana Licensed Qualifying Patients and Designated Caregivers Authorized for Cultivation

Approved cardholders cultivation status	Totals	Percent total
Qualifying patients (n = 108,995)	1,413	1.30%
Caregivers (n = 1,440)	0	0.00%

Table 7a. Type and Amount of Transactions at Medical Marijuana Dispensaries in 2017 to Date

Type of Transaction [†]	Ounces (oz.)	Pounds
Marijuana	796,387.43	49,774.21
Marijuana Edible	37,593.58	2,349.60
Marijuana Other	26,523.56	1,657.72
Total Marijuana Sold	860,504.58	53,781.54

[†]Amounts have been rounded and may not added to exact totals

Figure 5. Transactions and Amount of Marijuana Sold in 2017 by Month

