

## Arizona Medical Marijuana Program December 2017 Monthly Report

In December 2010, Arizona voters passed the Arizona Medical Marijuana Act (AMMA), A.R.S. §36-2801 *et seq.* The AMMA went into effect on April 14, 2011, making Arizona the fourteenth state to adopt a medical marijuana law. The AMMA designates the Arizona Department of Health Services (ADHS) as the licensing and issuing authority for the Arizona Medical Marijuana Program.

The AMMA monthly report highlights the most current program statistics. This includes data on active medical marijuana cardholders as well as transaction data from the sale of medical marijuana at non-profit medical marijuana dispensaries. Tables 1 through 6 and Figures 1 through 3 reflect data that are point in time. Table 7 and Figure 4 are data from the month of December, 2017. The Year-To-Date section which follows shows cumulative applications and approvals for 2017. For further information and statistics, please reference the Arizona Medical Marijuana Annual Report.

**Table 1. Arizona Medical Marijuana Active Qualifying Patients, Designated Caregivers and Dispensary Agents Profile**

Active Cardholder's Profile	Totals	Percent Total
1. Qualifying patients (QPs)	152,979	96.42%
2. Caregivers (CGs)	944	0.60%
3. Dispensary Agents (DA)	4,731	2.98%
<b>Total</b>	<b>158,654</b>	<b>100.00%</b>

\*Note: For caregivers and dispensary agents, these data reflect unique individuals, not the number of cards.

**Table 2. Arizona Medical Marijuana Active Qualifying Patients Profile**

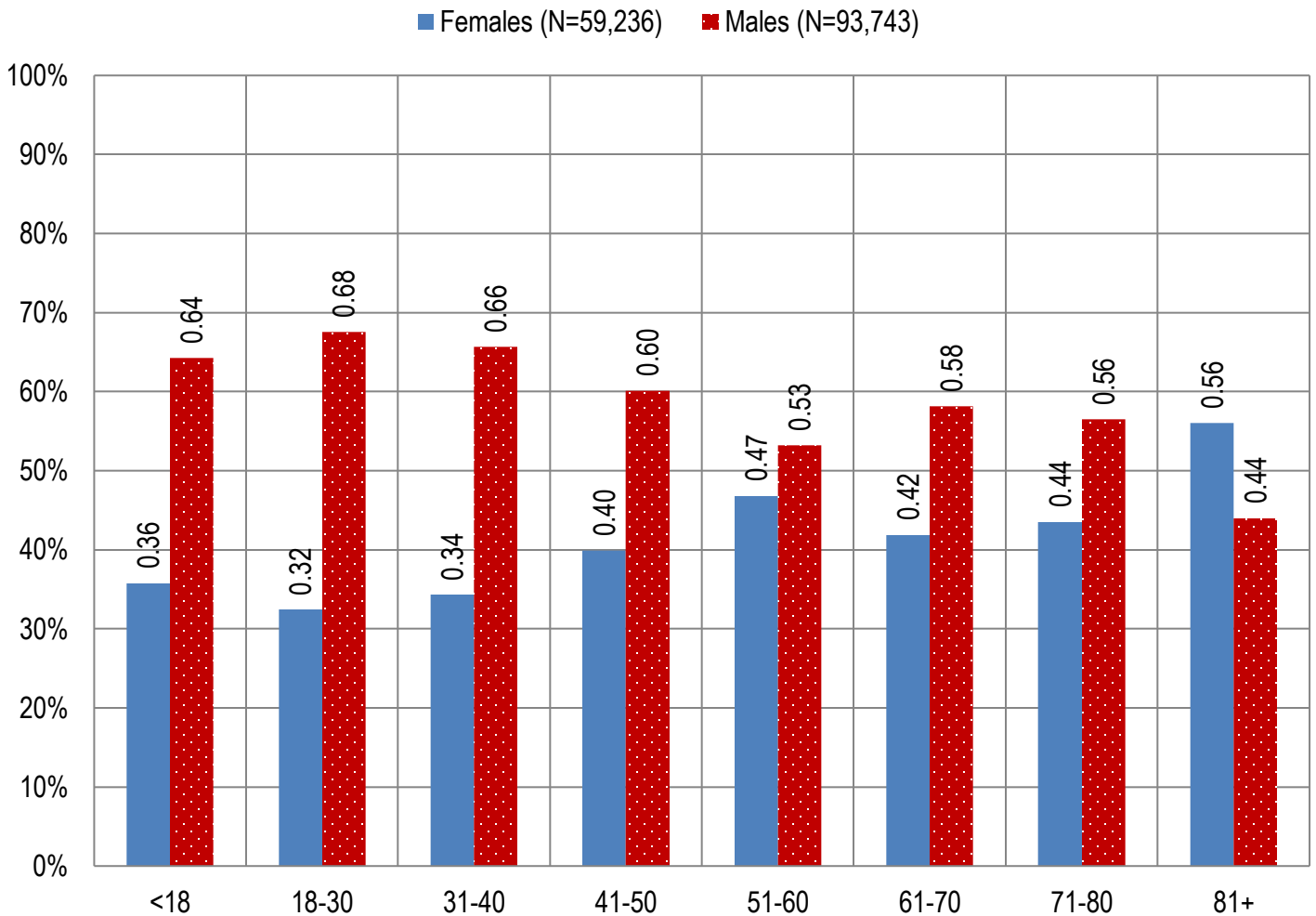
Application profile of qualifying patients	Totals	Percent Total
1. New applications	98,715	64.53%
2. Renewal applications	47,578	31.10%
3. Changed demographics	2,971	1.94%
4. Added Caregivers	276	0.18%
5. Change Dup	3,409	2.23%
6. Replaced Caregivers	24	0.02%
7. Removed Caregivers	6	0.00%
<b>Total</b>	<b>152,979</b>	<b>100.00%</b>

Approximately 11 percent (n = 17,224) of the active cardholders were determined to be SNAP eligible. Of the 17,224 that were determined to be eligible, 8,370 (~49%) were females and 8,854 (~51%) were males.

**Table 3. Arizona Medical Marijuana Active Qualifying Patients Characteristics**

Characteristics of Active Cardholders who are Qualified Patients	Totals (N =152,979)	Percent Total
<b>Patient Age-groups</b>		
Less than 18 years	207	0.14%
18 to 30 years	37,649	24.61%
31 to 40 years	31,468	20.57%
41 to 50 years	23,933	15.64%
51 to 60 years	25,676	16.78%
61 to 70 years	25,034	16.36%
71 to 80 years	7,402	4.84%
81 and older	1,610	1.05%
<b>Patient Gender</b>		
Male	93,743	61.28%
Female	59,236	38.72%

**Figure 1. Arizona Medical Marijuana Active Qualifying Patients Characteristics by Gender and Age (N = 152,979)**

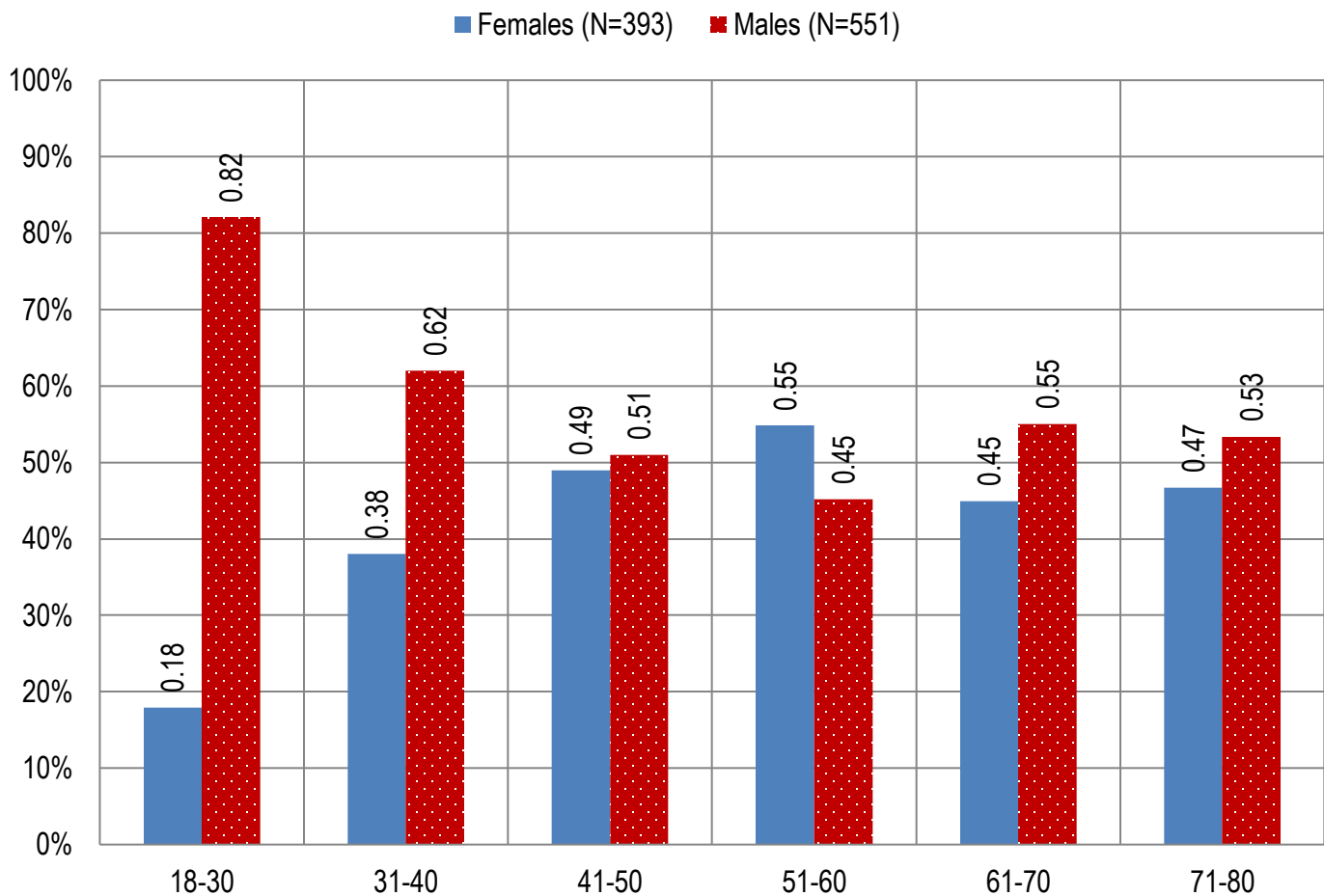


**Table 4. Arizona Medical Marijuana Active Qualifying Patients Medical Condition Profile**

Patient medical condition profile of Active Cardholders <sup>¶</sup>	Totals	Percent Total
Alzheimer's	66	0.04
Cachexia	121	0.08
Cancer	3728	2.44
Chronic Pain	130327	85.19
Crohn's Disease	526	0.34
Glaucoma	1012	0.66
Hepatitis C	893	0.58
HIV/AIDS	615	0.40
Muscle Spasms	1176	0.77
Nausea	806	0.53
Post-Traumatic Stress Disorder (PTSD)	2053	1.34
Sclerosis	47	0.03
Seizures	1165	0.76
Two Or More Conditions	10444	6.83
<b>TOTAL</b>	<b>152,979</b>	<b>100.00%</b>

<sup>¶</sup>Unique debilitating conditions

**Figure 2. Arizona Medical Marijuana Active Designated Caregiver Characteristics by Gender and Age (N = 944)**



**Table 5. Arizona Medical Marijuana Active Qualifying Patients and Designated Caregivers Authorized for Cultivation**

Active cardholders cultivation status	Totals	Percent Total
Qualifying patients (n =152,979)	1,701	1.11%
Caregivers (n =944)	413	43.75%

**Table 6. Frequency of Qualifying Patients, Caregivers, and Dispensary Agents by County of Residence**

County	Qualifying Patients	Caregivers	Dispensary Agents*
Apache County	816	20	Count Under 20
Cochise County	2,220	Count Under 20	123
Coconino County	3,353	38	121
Gila County	1,485	Count Under 20	37
Graham County	656	Count Under 20	Count Under 20
Greenlee County	152	Count Under 20	Count Under 20
La Paz County	378	Count Under 20	21
Maricopa County	97,178	549	2,833
Mohave County	5,148	Count Under 20	136
Navajo County	2,017	21	280
Pima County	21,219	128	479
Pinal County	8,464	46	165
Santa Cruz County	460	Count Under 20	93
Yavapai County	7,905	58	369
Yuma County	1,528	Count Under 20	Count Under 20
<b>TOTAL</b>	<b>152,979</b>	<b>944</b>	<b>4,731</b>

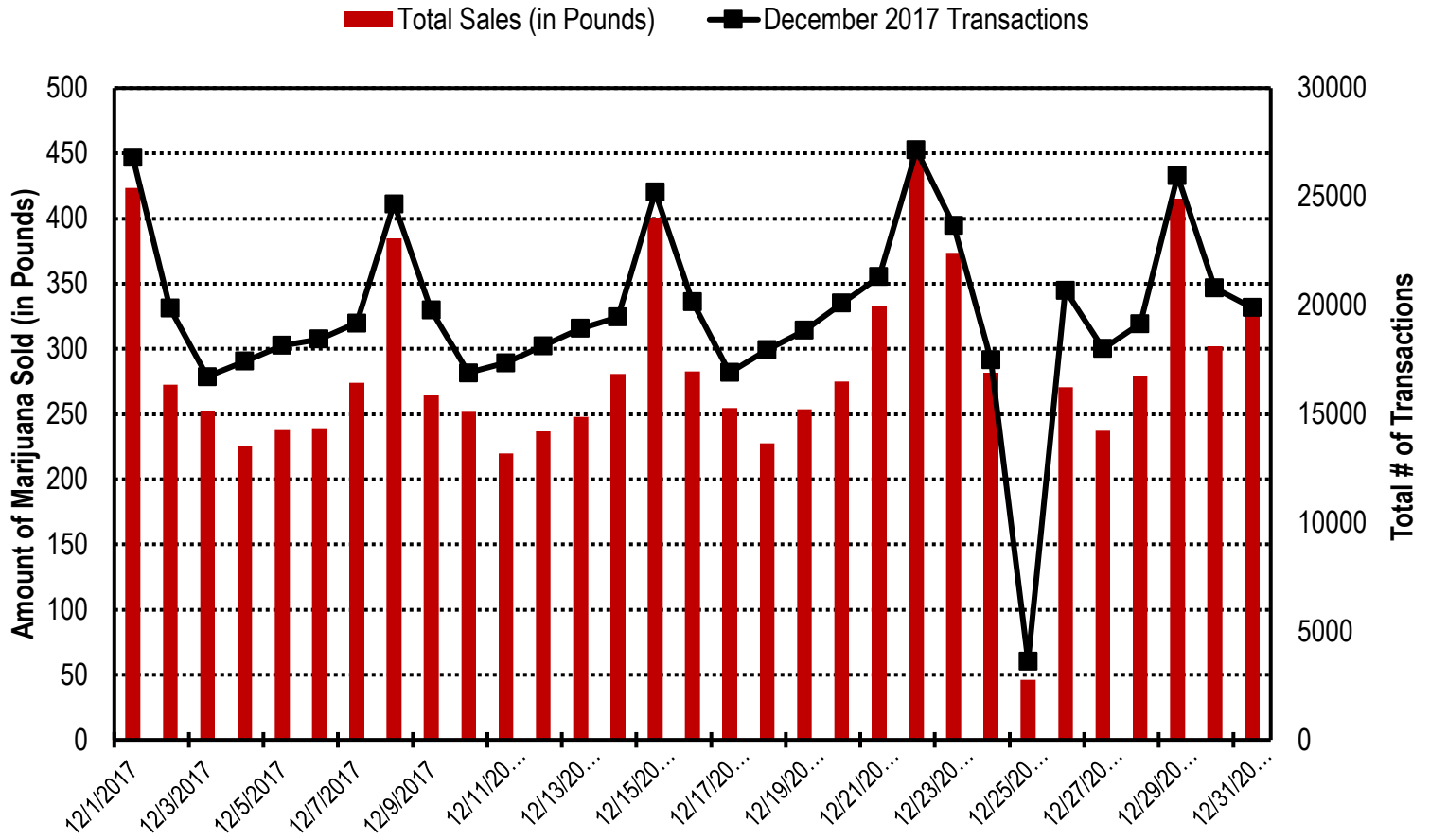
\* 35 Dispensary Agents are located outside of Arizona.

**Table 7. Type and Amount of Transactions at Medical Marijuana Dispensaries in December, 2017**

Type of Transaction <sup>†</sup>	Ounces (oz.)	Pounds
Marijuana	129,992.25	8,124.52
Marijuana Edible	6,189.33	386.83
Marijuana Other	5,000.66	312.54
<b>Total Marijuana Sold</b>	<b>141,182.23</b>	<b>8,823.89</b>

<sup>†</sup>Amounts have been rounded and may not added to exact totals

Figure 4. Daily Transactions and Amount of Marijuana Sold in December, 2017



**YEAR TO DATE**

**Table 1a. Arizona Medical Marijuana Applications Received- Application Profile**

<b>Applications Received Cardholder Profile</b>	<b>Totals</b>	<b>Percent Total</b>
Qualifying patients (QPs)	164,090	94.42%
Caregivers (CGs)	2,180	1.25%
Dispensary Agents (DA)	7,514	4.32%
<b>Total</b>	<b>173,784</b>	<b>100.00%</b>

\*Note: For caregivers and dispensary agents, these data reflect unique individuals, not the number of cards.

**Table 1b. Arizona Medical Marijuana Licensed Qualifying Patients, Designated Caregivers and Dispensary Agents Profile**

<b>Applications Approved Cardholder Profile</b>	<b>Totals</b>	<b>Percent Total</b>
Qualifying patients (QPs)	162,708	94.65%
Caregivers (CGs)	2,078	1.21%
Dispensary Agents (DA)	7,115	4.14%
<b>Total</b>	<b>171,901</b>	<b>100.00%</b>

\*Note: For caregivers and dispensary agents, these data reflect unique individuals, not the number of cards.

**Table 2. Arizona Medical Marijuana Licensed Qualifying Patient Profile**

<b>Applications Received for Qualifying Patients</b>	<b>Totals</b>	<b>Percent Total</b>
New applications	102,924	63.26%
Renewal applications	50,020	30.74%
Changed demographics	4,015	2.47%
Added Caregivers	410	0.25%
Change Dup	5,282	3.25%
Replaced Caregivers	48	0.03%
Removed Caregivers	9	0.01%
<b>Total</b>	<b>162,708</b>	<b>100.00%</b>

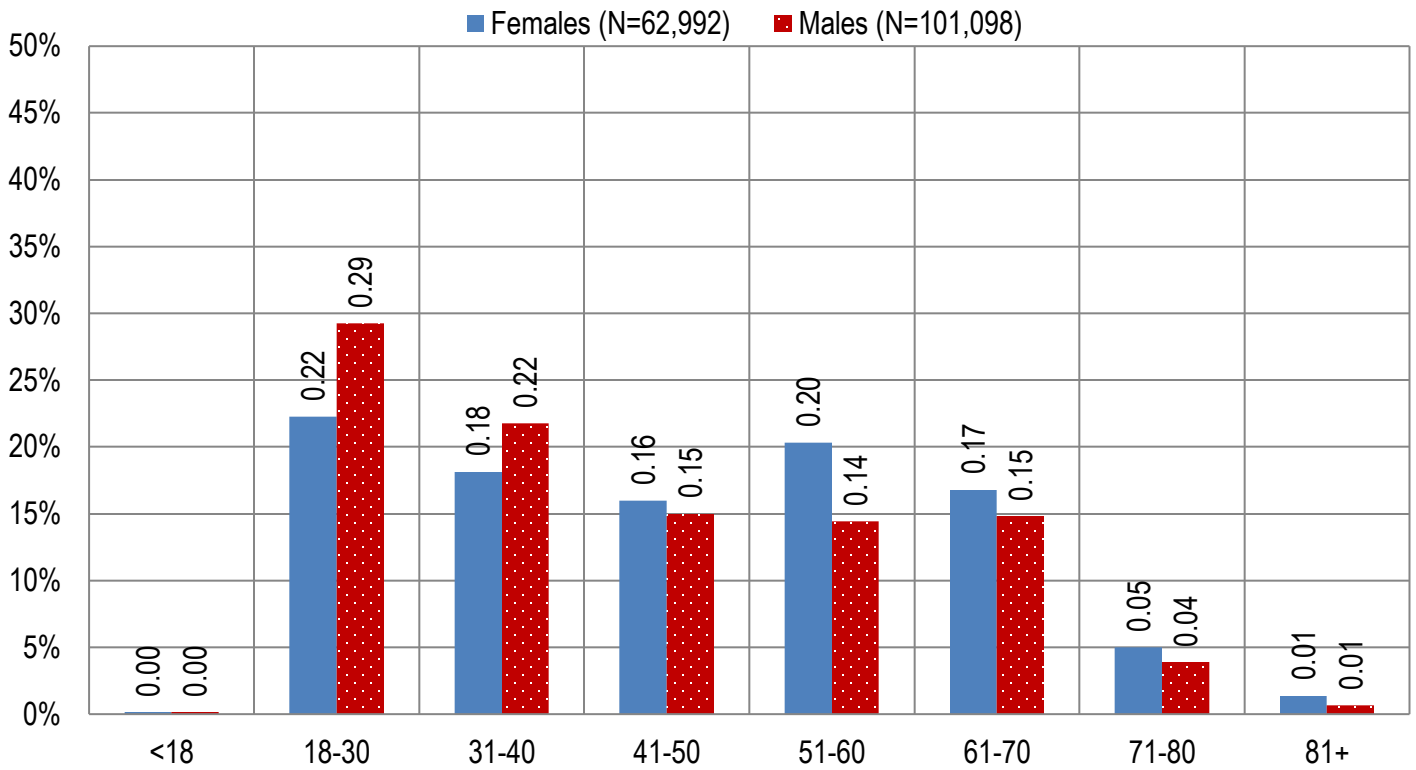
**Table 3a. Arizona Medical Marijuana Applications Received- Patient Characteristics**

<b>Characteristics of Applications Received who are Qualified Patients</b>	<b>Totals (N = 164,090)</b>	<b>Percent Total</b>
<b>Patient Age-groups</b>		
Less than 18 years	242	0.15%
18 to 30 years	43,599	26.57%
31 to 40 years	33,451	20.39%
41 to 50 years	25,221	15.37%
51 to 60 years	27,387	16.69%
61 to 70 years	25,572	15.58%
71 to 80 years	7,090	4.32%
81 and older	1,528	0.93%
<b>Patient Gender</b>		
Male	101,098	61.61%
Female	62,992	38.39%

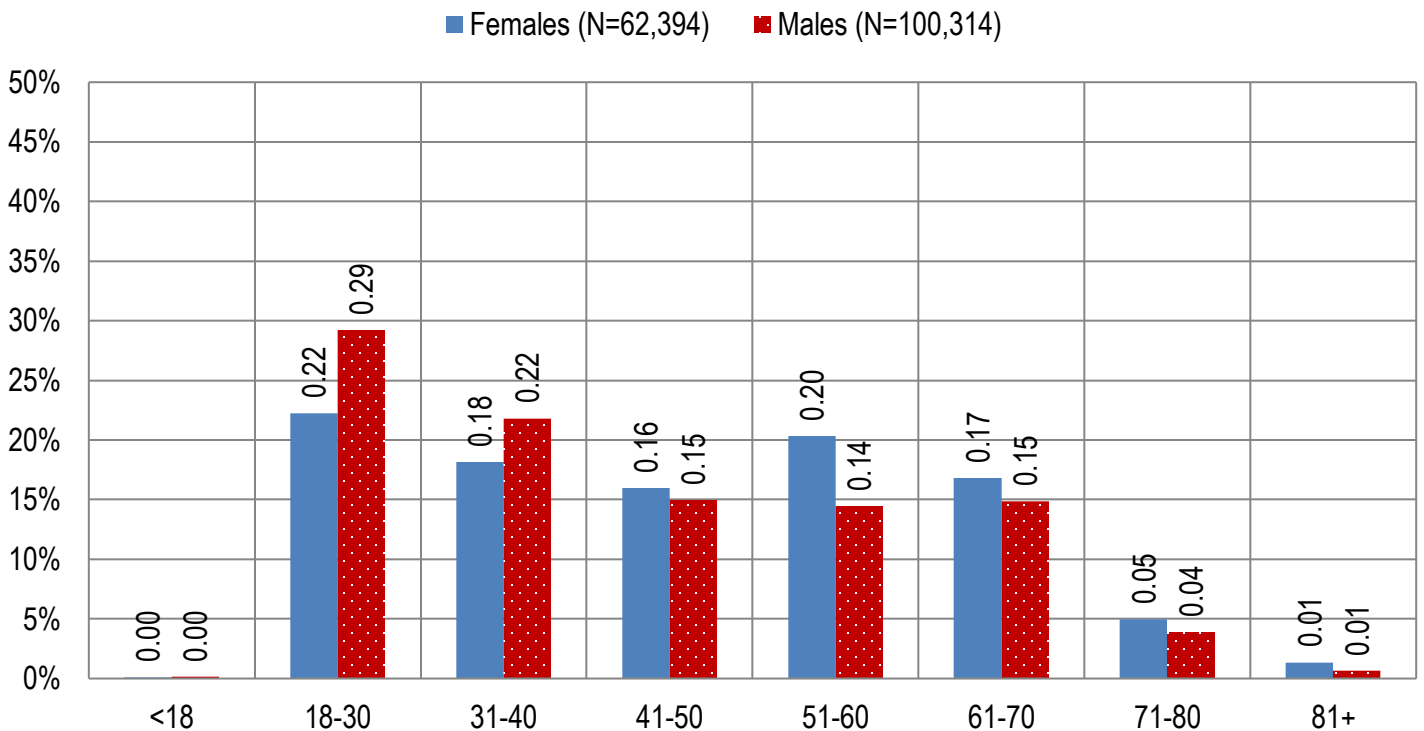
**Table 3b. Arizona Medical Marijuana Licensed Qualifying Patient Characteristics**

<b>Characteristics of Approved Applications who are Qualified Patients</b>	<b>Totals (N = 162,708)</b>	<b>Percent Total</b>
<b>Patient Age-groups</b>		
Less than 18 years	224	0.14%
18 to 30 years	43,206	26.55%
31 to 40 years	33,194	20.40%
41 to 50 years	25,016	15.37%
51 to 60 years	27,183	16.71%
61 to 70 years	25,381	15.60%
71 to 80 years	7,006	4.31%
81 and older	1,498	0.92%
<b>Patient Gender</b>		
Male	100,314	61.65%
Female	62,394	38.35%

**Figure 1a. Arizona Medical Marijuana Applications Received- Patient Characteristics by Gender and Age (N =164,090)**

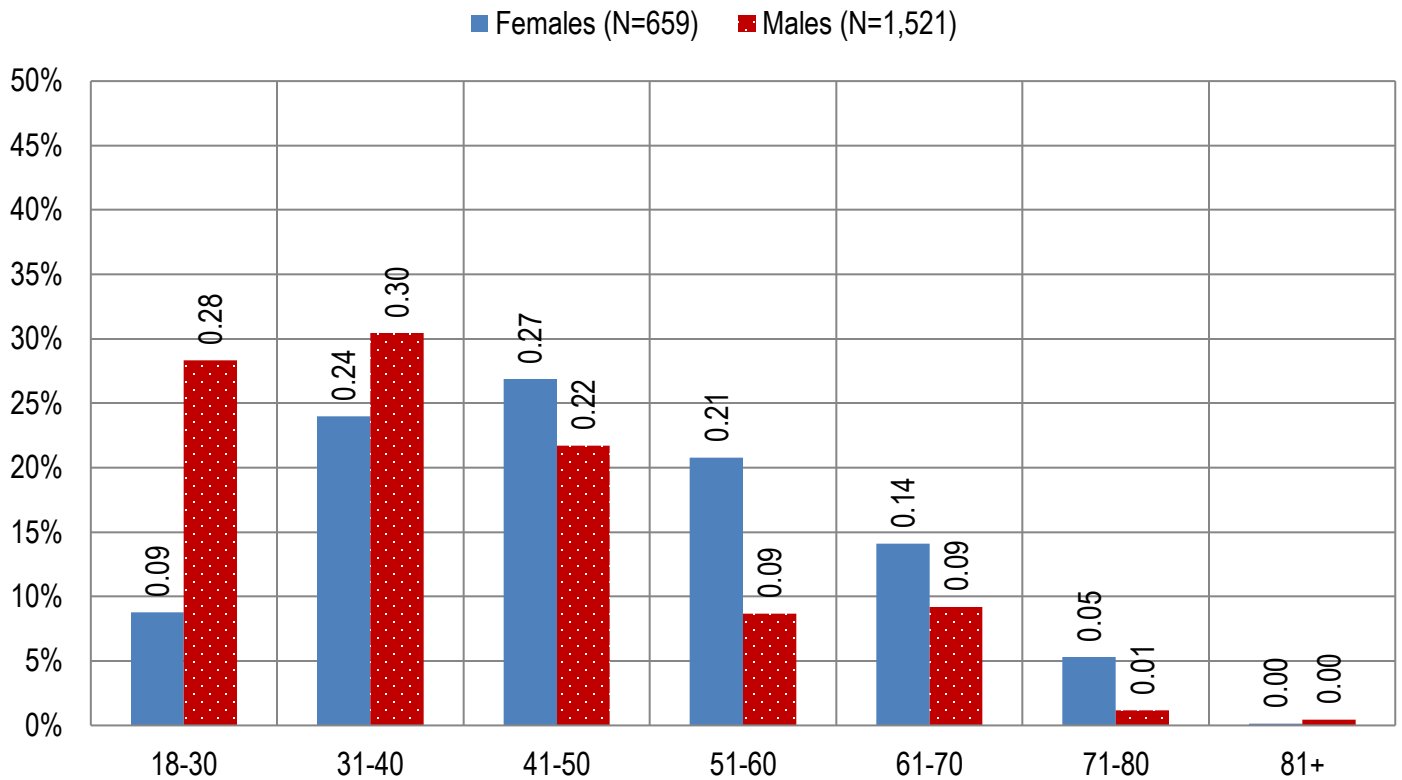


**Figure 1b. Arizona Medical Marijuana Licensed Qualifying Patient Characteristics by Gender and Age (N =162,708)**

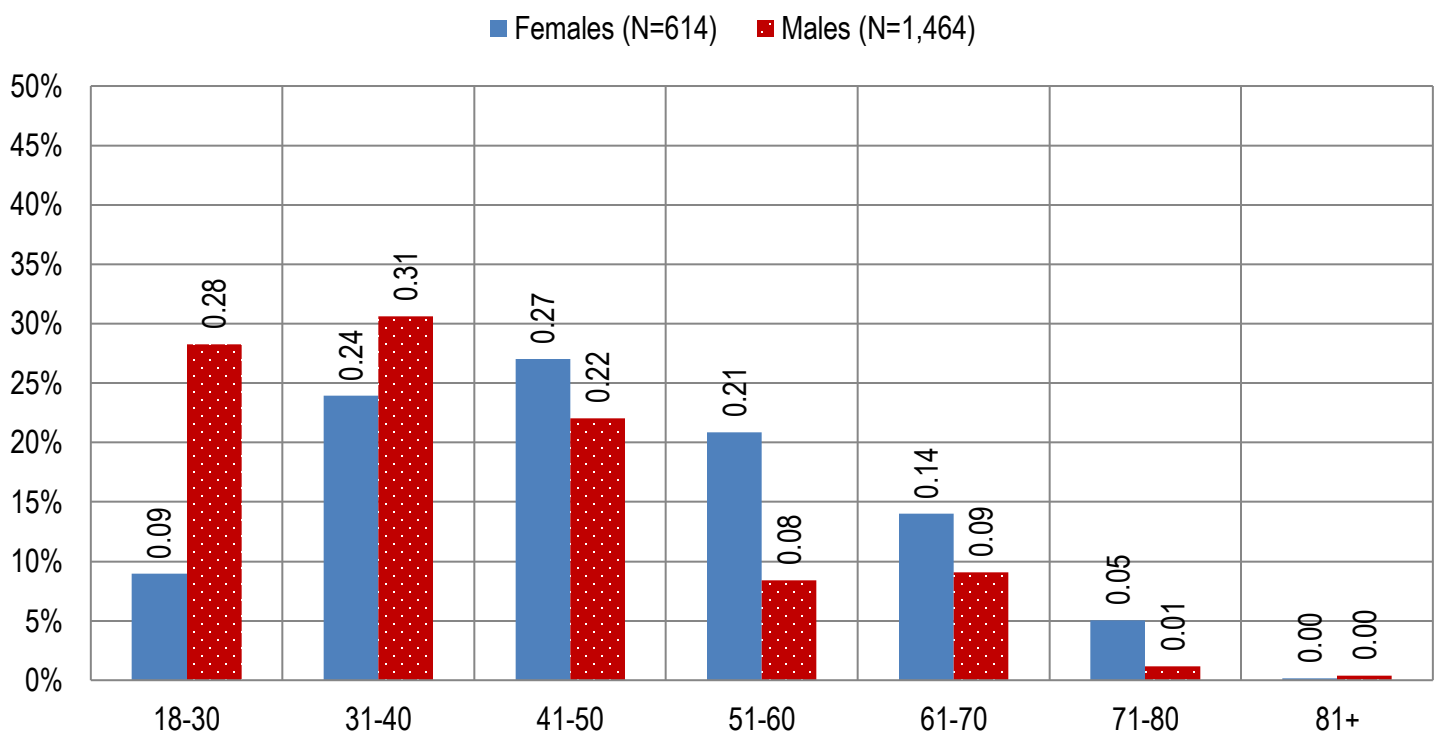




**Figure 2a. Arizona Medical Marijuana Applications Received- Caregivers Characteristics by Gender and Age**  
(N = 2,180)



**Figure 2b. Arizona Medical Marijuana Licensed Caregivers Characteristics by Gender and Age**  
(N = 2,078)



**Table 4a. Arizona Medical Marijuana Applications Received- Patient Medical Conditions Profile**

Patient medical condition profile of Applications Received <sup>¶</sup>	Totals	Percent Total
Alzheimer's	69	0.04%
Cachexia	128	0.08%
Cancer	3,901	2.38%
Chronic Pain	139,945	85.29%
Crohn's Disease	539	0.33%
Glaucoma	1,069	0.65%
Hepatitis C	980	0.60%
HIV/AIDS	652	0.40%
Muscle Spasms	1,257	0.77%
Nausea	856	0.52%
Post-Traumatic Stress Disorder (PTSD)	2,226	1.36%
Sclerosis	48	0.03%
Seizures	1,268	0.77%
Two Or More Conditions	11,152	6.80%
<b>TOTAL</b>	<b>164,090</b>	<b>100.00%</b>

<sup>¶</sup>Unique debilitating conditions

**Table 4b. Arizona Medical Marijuana Licensed Qualifying Patients Medical Conditions Profile**

Patient medical condition profile of Applications Approved <sup>¶</sup>	Totals	Percent Total
Alzheimer's	68	0.04%
Cachexia	125	0.08%
Cancer	3,866	2.38%
Chronic Pain	138,803	85.31%
Crohn's Disease	535	0.33%
Glaucoma	1,058	0.65%
Hepatitis C	977	0.60%
HIV/AIDS	649	0.40%
Muscle Spasms	1,245	0.77%
Nausea	853	0.52%
Post-Traumatic Stress Disorder (PTSD)	2,192	1.35%
Sclerosis	48	0.03%
Seizures	1,246	0.77%
Two Or More Conditions	11,043	6.79%
<b>TOTAL</b>	<b>162,708</b>	<b>100.00%</b>

<sup>¶</sup>Unique debilitating conditions

**Table 5a. Arizona Medical Marijuana Applications Received for Applicants Seeking Authorization to Cultivate**

Applications Received for cardholders with cultivation status	Totals	Percent total
Qualifying patients (n = 164,090)	1,996	1.22%
Caregivers (n = 2,180)	0	0.00%

**Table 5b. Arizona Medical Marijuana Licensed Qualifying Patients and Designated Caregivers Authorized for Cultivation**

Approved cardholders cultivation status	Totals	Percent total
Qualifying patients (n = 162,708)	1,996	1.23%
Caregivers (n = 2,078)	0	0.00%

**Table 7a. Type and Amount of Transactions at Medical Marijuana Dispensaries in 2017 to Date**

Type of Transaction <sup>†</sup>	Ounces (oz.)	Pounds
Marijuana	1,282,029.01	80,126.81
Marijuana Edible	59,500.10	3,718.76
Marijuana Other	44,669.48	2,791.84
<b>Total Marijuana Sold</b>	<b>1,386,198.59</b>	<b>86,637.41</b>

<sup>†</sup>Amounts have been rounded and may not added to exact totals

**Figure 5. Transactions and Amount of Marijuana Sold in 2017 by Month**

