

Arizona Medical Marijuana Program July 2017 Monthly Report

In November 2010, Arizona voters passed the Arizona Medical Marijuana Act (AMMA), A.R.S. §36-2801 *et seq.* The AMMA went into effect on April 14, 2011, making Arizona the fourteenth state to adopt a medical marijuana law. The AMMA designates the Arizona Department of Health Services (ADHS) as the licensing and issuing authority for the Arizona Medical Marijuana Program.

The AMMA monthly report highlights the most current program statistics. This includes data on active medical marijuana cardholders as well as transaction data from the sale of medical marijuana at non-profit medical marijuana dispensaries. Tables 1 through 6 and Figures 1 through 3 reflect data that are point in time. Table 7 and Figure 4 are data from the month of July, 2017. The Year-To-Date section which follows shows cumulative applications and approvals for 2017. For further information and statistics, please reference the Arizona Medical Marijuana Annual Report.

Table 1. Arizona Medical Marijuana Active Qualifying Patients, Designated Caregivers and Dispensary Agents Profile

Active Cardholder's Profile	Totals	Percent Total
1. Qualifying patients (QPs)	136,515	96.46%
2. Caregivers (CGs)	895	0.63%
3. Dispensary Agents (DA)	4,109	2.90%
Total	141,519	100.00%

*Note: For caregivers and dispensary agents, these data reflect unique individuals, not the number of cards.

Table 2. Arizona Medical Marijuana Active Qualifying Patients Profile

Application profile of qualifying patients	Totals	Percent Total
1. New applications	89,422	65.50%
2. Renewal applications	41,272	30.23%
3. Changed demographics	2,548	1.87%
4. Added Caregivers	227	0.17%
5. Change Dup	3,024	2.22%
6. Replaced Caregivers	19	0.01%
7. Removed Caregivers	3	0.00%
Total	136,515	100.00%

Approximately 11 percent (n = 15,563) of the active cardholders were determined to be SNAP eligible. Of the 15,563 that were determined to be eligible, 7,444 (~48%) were females and 8,119 (~52%) were males.

Table 3. Arizona Medical Marijuana Active Qualifying Patients Characteristics

Characteristics of Active Cardholders who are Qualified Patients	Totals (N =136,515)	Percent Total
Patient Age-groups		
Less than 18 years	193	0.14%
18 to 30 years	33,396	24.46%
31 to 40 years	28,236	20.68%
41 to 50 years	21,290	15.60%
51 to 60 years	23,314	17.08%
61 to 70 years	22,509	16.49%
71 to 80 years	6,216	4.55%
81 and older	1,361	1.00%
Patient Gender		
Male	84,884	62.18%
Female	51,631	37.82%

**Figure 1. Arizona Medical Marijuana Active Qualifying Patients Characteristics by Gender and Age
(N = 136,515)**

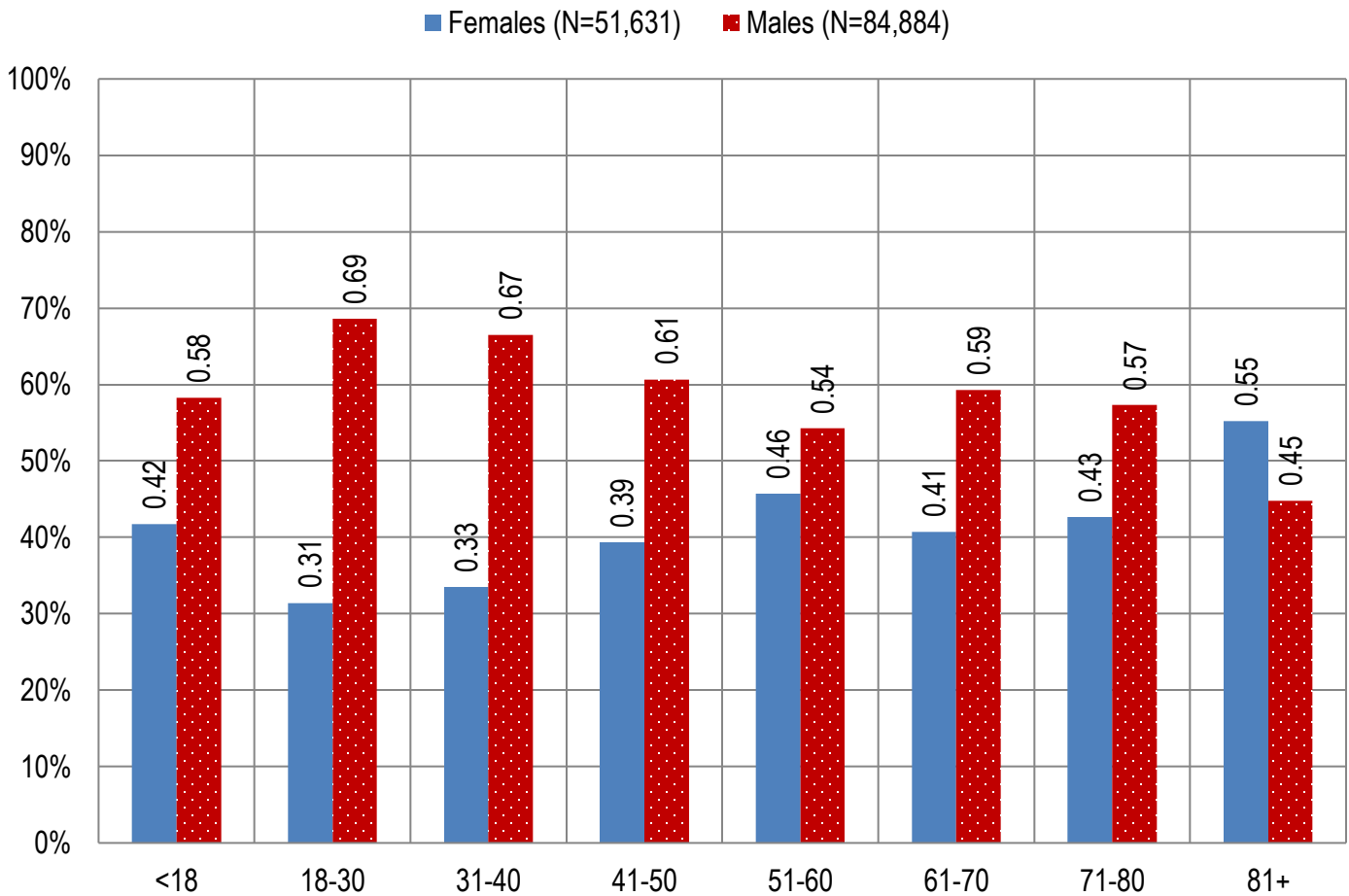


Table 4. Arizona Medical Marijuana Active Qualifying Patients Medical Condition Profile

Patient medical condition profile of Active Cardholders [¶]	Totals	Percent Total
Alzheimer's	71	0.05%
Cachexia	123	0.09%
Cancer	3,570	2.62%
Chronic Pain	114,091	83.57%
Crohn's Disease	494	0.36%
Glaucoma	947	0.69%
Hepatitis C	893	0.65%
HIV/AIDS	596	0.44%
Muscle Spasms	1,079	0.79%
Nausea	763	0.56%
Post-Traumatic Stress Disorder (PTSD)	1,860	1.36%
Sclerosis	38	0.03%
Seizures	1,093	0.80%
Two Or More Conditions	10,897	7.98%
TOTAL	136,515	100.00%

[¶]Unique debilitating conditions

Figure 2. Arizona Medical Marijuana Active Designated Caregiver Characteristics by Gender and Age (N = 895)

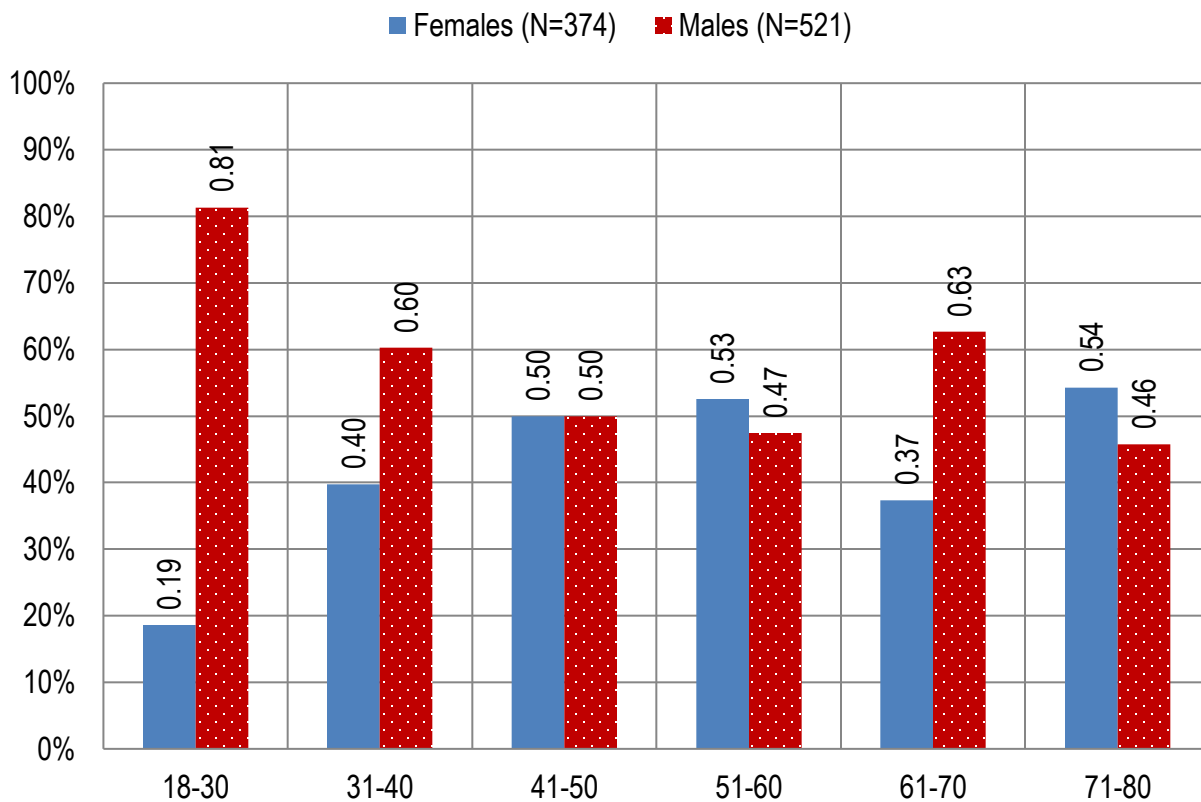


Table 5. Arizona Medical Marijuana Active Qualifying Patients and Designated Caregivers Authorized for Cultivation

Active cardholders cultivation status	Totals	Percent Total
Qualifying patients (n =136,515)	1,606	1.18%
Caregivers (n =895)	392	43.79%

Table 6. Frequency of Qualifying Patients, Caregivers, and Dispensary Agents by County of Residence

County	Qualifying Patients	Caregivers	Dispensary Agents*
Apache County	797	Count Under 20	Count Under 20
Cochise County	1,990	Count Under 20	100
Coconino County	3,053	33	106
Gila County	1,335	Count Under 20	38
Graham County	541	Count Under 20	Count Under 20
Greenlee County	150	Count Under 20	Count Under 20
La Paz County	363	Count Under 20	24
Maricopa County	86,119	545	2,447
Mohave County	5,028	Count Under 20	127
Navajo County	1,813	Count Under 20	203
Pima County	18,766	116	439
Pinal County	7,471	45	163
Santa Cruz County	405	Count Under 20	80
Yavapai County	7,200	58	324
Yuma County	1,484	Count Under 20	Count Under 20
TOTAL	136,515	895	4,109

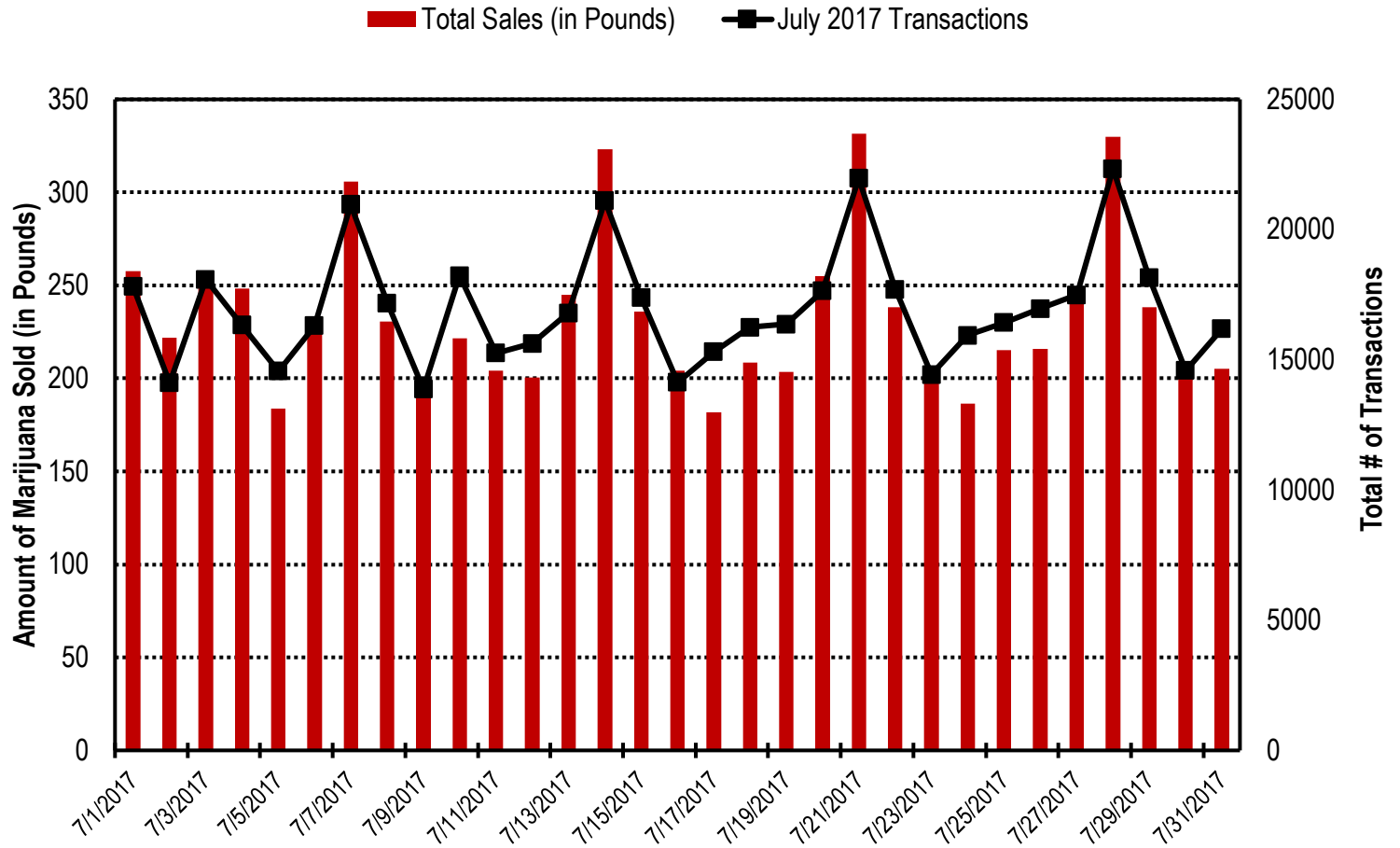
* Dispensary Agents are located outside of Arizona.

Table 7. Type and Amount of Transactions at Medical Marijuana Dispensaries in July, 2017

Type of Transaction [†]	Ounces (oz.)	Pounds
Marijuana	107,009.05	6,688.07
Marijuana Edible	4,658.80	291.18
Marijuana Other	4,054.10	253.38
Total Marijuana Sold	115,721.95	7,232.62

[†]Amounts have been rounded and may not added to exact totals

Figure 4. Daily Transactions and Amount of Marijuana Sold in July, 2017



YEAR TO DATE

Table 1a. Arizona Medical Marijuana Applications Received- Application Profile

Applications Received Cardholder Profile	Totals	Percent Total
Qualifying patients (QPs)	96,337	94.45%
Caregivers (CGs)	1,360	1.33%
Dispensary Agents (DA)	4,296	4.21%
Total	101,993	100.00%

*Note: For caregivers and dispensary agents, these data reflect unique individuals, not the number of cards.

Table 1b. Arizona Medical Marijuana Licensed Qualifying Patients, Designated Caregivers and Dispensary Agents Profile

Applications Approved Cardholder Profile	Totals	Percent Total
Qualifying patients (QPs)	95,373	94.78%
Caregivers (CGs)	1,256	1.25%
Dispensary Agents (DA)	4,000	3.97%
Total	10,0629	100.00%

*Note: For caregivers and dispensary agents, these data reflect unique individuals, not the number of cards.

Table 2. Arizona Medical Marijuana Licensed Qualifying Patient Profile

Applications Received for Qualifying Patients	Totals	Percent Total
New applications	60,387	63.32%
Renewal applications	29,468	30.90%
Changed demographics	2,247	2.36%
Added Caregivers	263	0.28%
Change Dup	2,978	3.12%
Replaced Caregivers	27	0.03%
Removed Caregivers	3	0.00%
Total	95,373	100.00%

Table 3a. Arizona Medical Marijuana Applications Received- Patient Characteristics

Characteristics of Applications Received who are Qualified Patients	Totals (N = 96,337)	Percent Total
Patient Age-groups		
Less than 18 years	153	0.16%
18 to 30 years	25,650	26.63%
31 to 40 years	20,201	20.97%
41 to 50 years	14,637	15.19%
51 to 60 years	16,063	16.67%
61 to 70 years	14,840	15.40%
71 to 80 years	3,963	4.11%
81 and older	830	0.86%
Patient Gender		
Male	59,650	61.92%
Female	36,687	38.08%

Table 3b. Arizona Medical Marijuana Licensed Qualifying Patient Characteristics

Characteristics of Approved Applications who are Qualified Patients	Totals (N = 95,373)	Percent Total
Patient Age-groups		
Less than 18 years	135	0.14%
18 to 30 years	25,430	26.66%
31 to 40 years	20,012	20.98%
41 to 50 years	14,501	15.20%
51 to 60 years	15,891	16.66%
61 to 70 years	14,680	15.39%
71 to 80 years	3,916	4.11%
81 and older	808	0.85%
Patient Gender		
Male	59,108	61.98%
Female	36,265	38.02%

Figure 1a. Arizona Medical Marijuana Applications Received- Patient Characteristics by Gender and Age

(N =96,337)

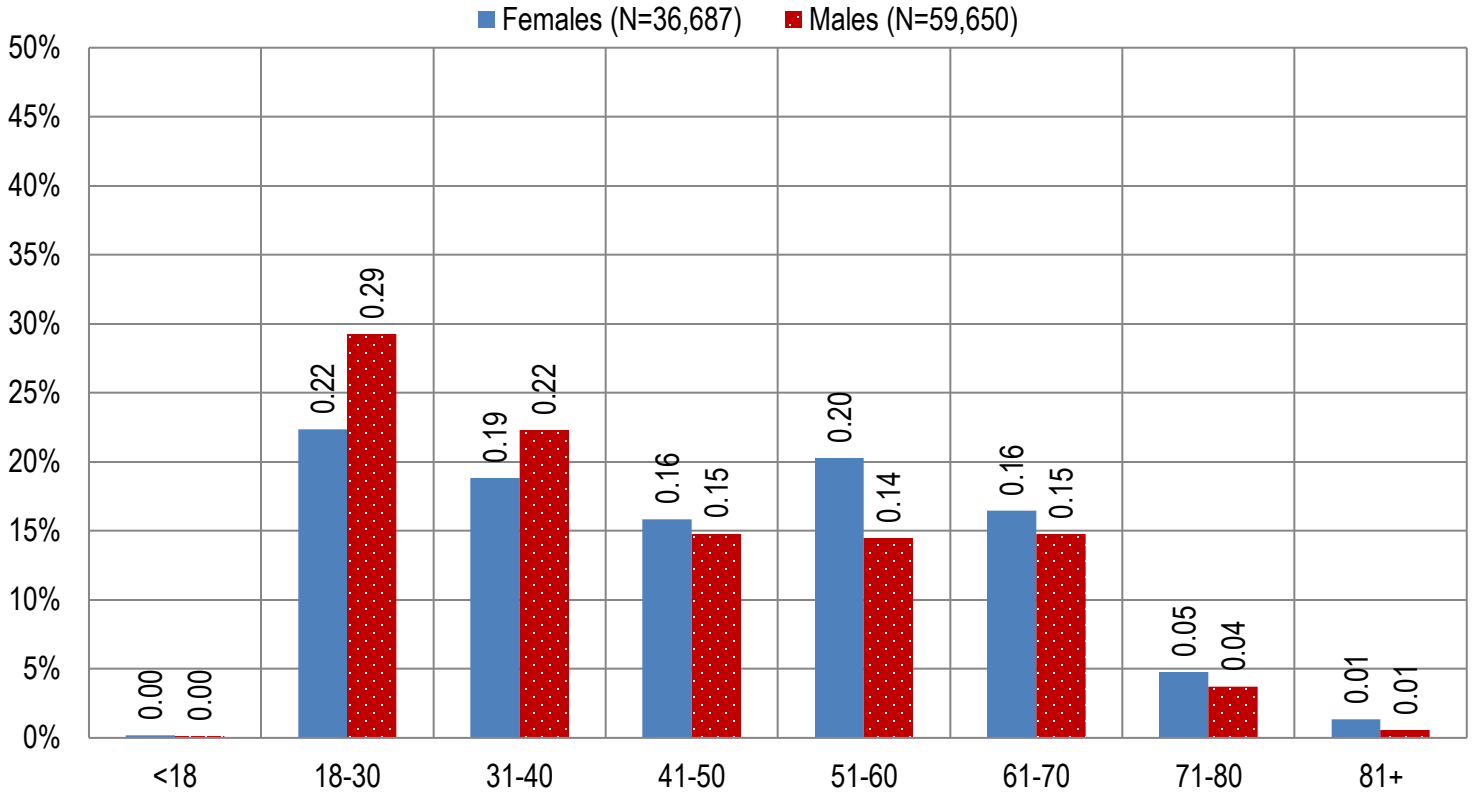


Figure 1b. Arizona Medical Marijuana Licensed Qualifying Patient Characteristics by Gender and Age

(N =95,373)

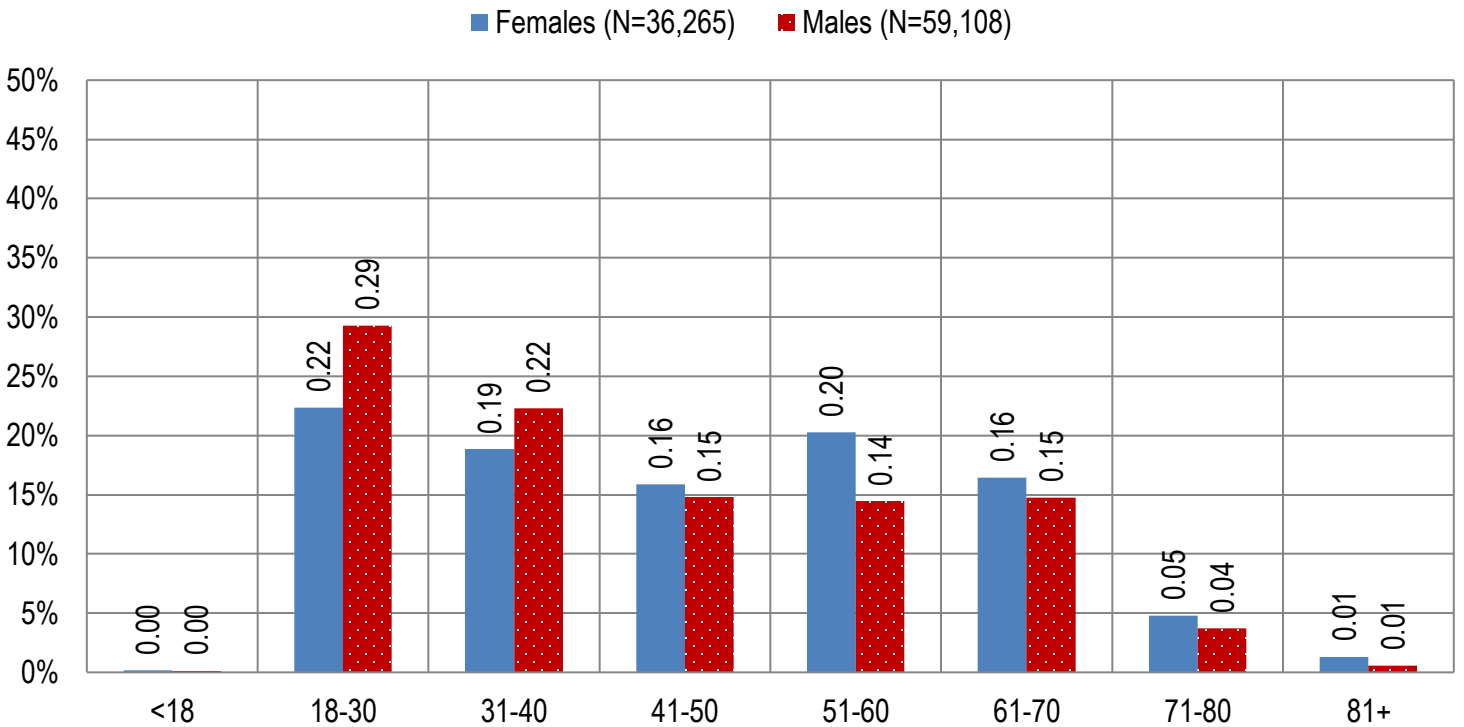


Figure 2a. Arizona Medical Marijuana Applications Received- Caregivers Characteristics by Gender and Age

(N = 1,360)

■ Females (N=396) ■ Males (N=964)

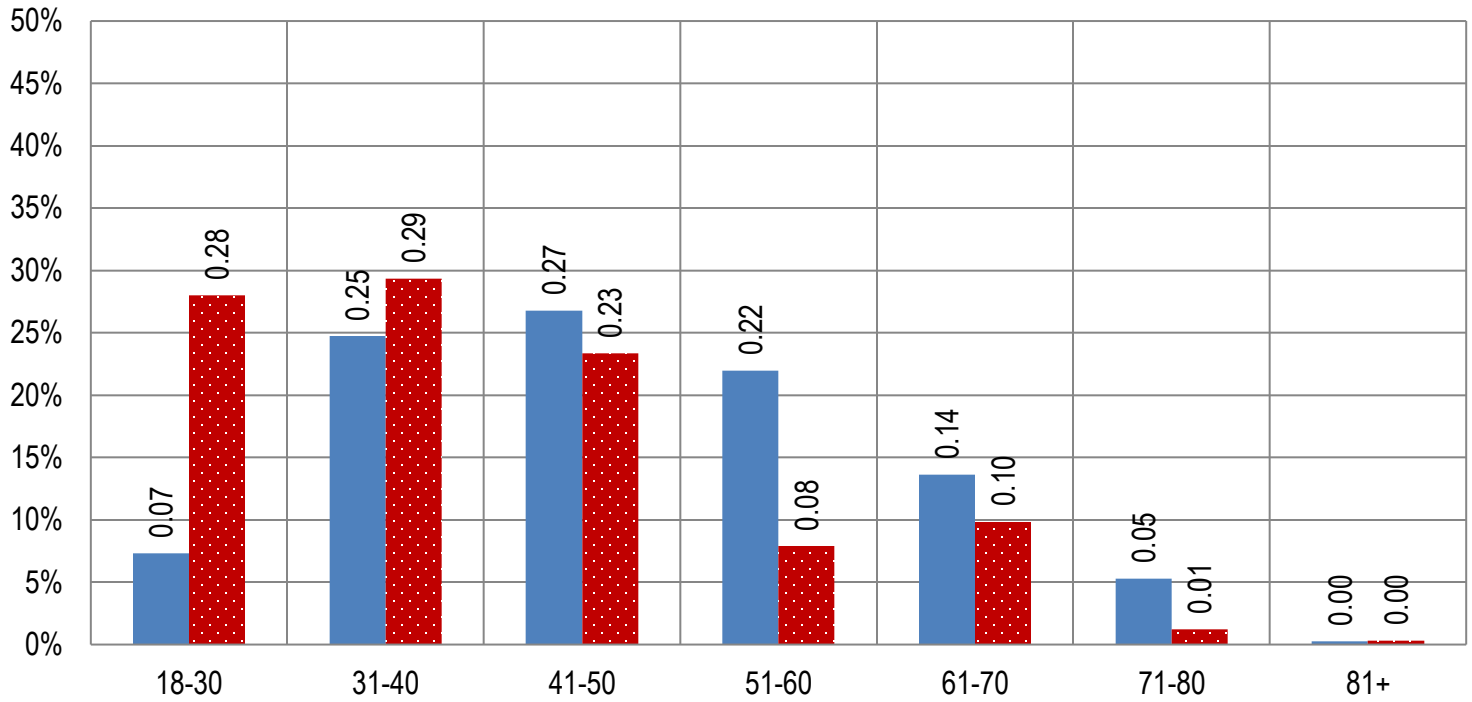


Figure 2b. Arizona Medical Marijuana Licensed Caregivers Characteristics by Gender and Age

(N = 1,256)

■ Females (N=364) ■ Males (N=892)

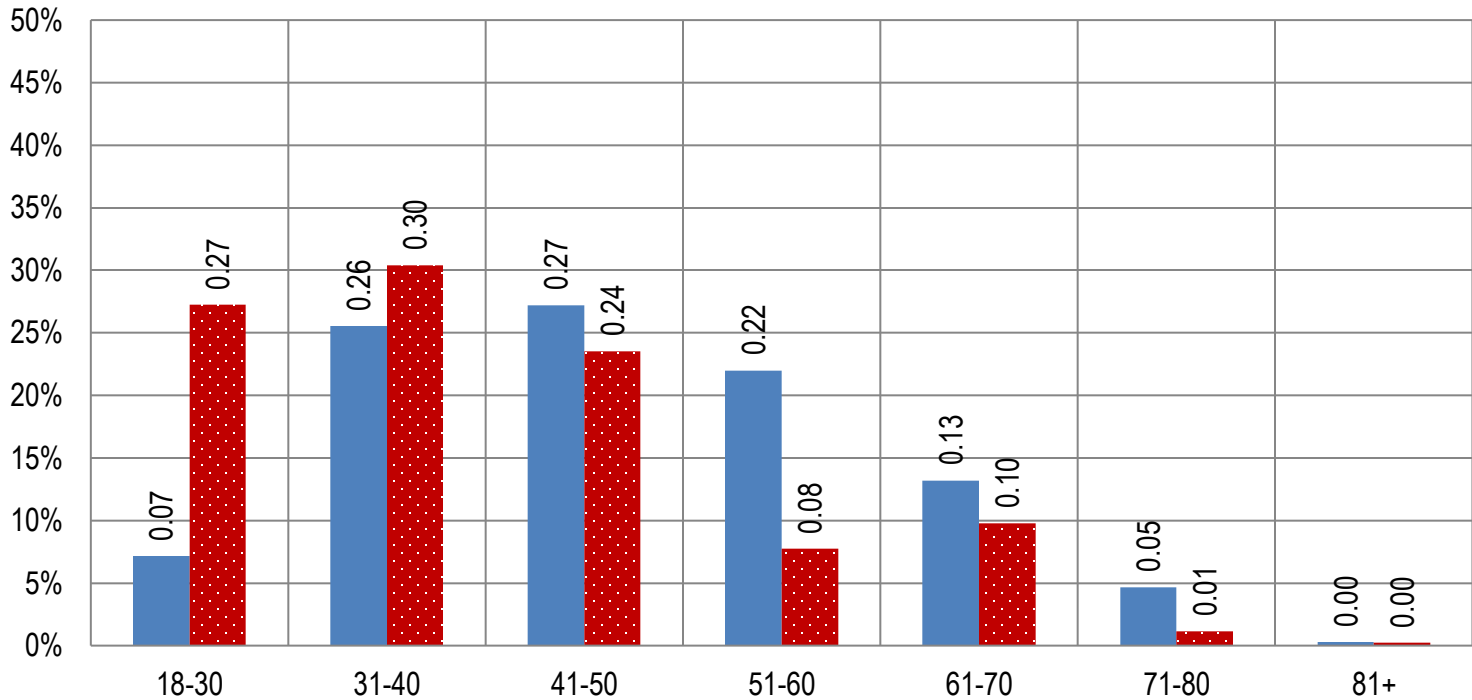


Table 4a. Arizona Medical Marijuana Applications Received- Patient Medical Conditions Profile

Patient medical condition profile of Applications Received [¶]	Totals	Percent Total
Alzheimer's	41	0.04%
Cachexia	74	0.08%
Cancer	2,289	2.38%
Chronic Pain	81,307	84.40%
Crohn's Disease	331	0.34%
Glaucoma	624	0.65%
Hepatitis C	633	0.66%
HIV/AIDS	397	0.41%
Muscle Spasms	843	0.88%
Nausea	508	0.53%
Post-Traumatic Stress Disorder (PTSD)	1,329	1.38%
Sclerosis	28	0.03%
Seizures	758	0.79%
Two Or More Conditions	7,175	7.45%
TOTAL	96,337	100.00%

[¶]Unique debilitating conditions

Table 4b. Arizona Medical Marijuana Licensed Qualifying Patients Medical Conditions Profile

Patient medical condition profile of Applications Approved [¶]	Totals	Percent Total
Alzheimer's	40	0.04%
Cachexia	74	0.08%
Cancer	2,256	2.37%
Chronic Pain	80,545	84.45%
Crohn's Disease	327	0.34%
Glaucoma	620	0.65%
Hepatitis C	625	0.66%
HIV/AIDS	394	0.41%
Muscle Spasms	831	0.87%
Nausea	503	0.53%
Post-Traumatic Stress Disorder (PTSD)	1,309	1.37%
Sclerosis	28	0.03%
Seizures	742	0.78%
Two Or More Conditions	7,079	7.42%
TOTAL	95,373	100.00%

[¶]Unique debilitating conditions

Table 5a. Arizona Medical Marijuana Applications Received for Applicants Seeking Authorization to Cultivate

Applications Received for cardholders with cultivation status	Totals	Percent total
Qualifying patients (n = 96,337)	1,236	1.28%
Caregivers (n = 1,360)	0	0.00%

Table 5b. Arizona Medical Marijuana Licensed Qualifying Patients and Designated Caregivers Authorized for Cultivation

Approved cardholders cultivation status	Totals	Percent total
Qualifying patients (n = 95,373)	1,236	1.30%
Caregivers (n = 1,256)	0	0.00%

Table 7a. Type and Amount of Transactions at Medical Marijuana Dispensaries in 2017 to Date

Type of Transaction [†]	Ounces (oz.)	Pounds
Marijuana	684,554.63	42,784.66
Marijuana Edible	32,660.30	2,041.27
Marijuana Other	22,391.67	1,399.48
Total Marijuana Sold	739,606.60	46,225.41

[†]Amounts have been rounded and may not added to exact totals

Figure 5. Transactions and Amount of Marijuana Sold in 2017 by Month

