

Arizona Medical Marijuana Program September 2017 Monthly Report

In November 2010, Arizona voters passed the Arizona Medical Marijuana Act (AMMA), A.R.S. §36-2801 *et seq.* The AMMA went into effect on April 14, 2011, making Arizona the fourteenth state to adopt a medical marijuana law. The AMMA designates the Arizona Department of Health Services (ADHS) as the licensing and issuing authority for the Arizona Medical Marijuana Program.

The AMMA monthly report highlights the most current program statistics. This includes data on active medical marijuana cardholders as well as transaction data from the sale of medical marijuana at non-profit medical marijuana dispensaries. Tables 1 through 6 and Figures 1 through 3 reflect data that are point in time. Table 7 and Figure 4 are data from the month of September, 2017. The Year-To-Date section which follows shows cumulative applications and approvals for 2017. For further information and statistics, please reference the Arizona Medical Marijuana Annual Report.

Table 1. Arizona Medical Marijuana Active Qualifying Patients, Designated Caregivers and Dispensary Agents Profile

Active Cardholder's Profile	Totals	Percent Total
1. Qualifying patients (QPs)	143,239	96.45%
2. Caregivers (CGs)	918	0.62%
3. Dispensary Agents (DA)	4,353	2.93%
Total	148,510	100.00%

*Note: For caregivers and dispensary agents, these data reflect unique individuals, not the number of cards.

Table 2. Arizona Medical Marijuana Active Qualifying Patients Profile

Application profile of qualifying patients	Totals	Percent Total
1. New applications	93,675	65.40%
2. Renewal applications	43,500	30.37%
3. Changed demographics	2,673	1.87%
4. Added Caregivers	261	0.18%
5. Change Dup	3,103	2.17%
6. Replaced Caregivers	22	0.02%
7. Removed Caregivers	5	0.00%
Total	143,239	100.00%

Approximately 11 percent (n = 16,125) of the active cardholders were determined to be SNAP eligible. Of the 16,125 that were determined to be eligible, 7,774 (~48%) were females and 8,351 (~52%) were males.

Table 3. Arizona Medical Marijuana Active Qualifying Patients Characteristics

Characteristics of Active Cardholders who are Qualified Patients	Totals (N =143,239)	Percent Total
Patient Age-groups		
Less than 18 years	202	0.14%
18 to 30 years	35,064	24.48%
31 to 40 years	29,506	20.60%
41 to 50 years	22,348	15.60%
51 to 60 years	24,324	16.98%
61 to 70 years	23,593	16.47%
71 to 80 years	6,708	4.68%
81 and older	1,494	1.04%
Patient Gender		
Male	88,455	61.75%
Female	54,784	38.25%

Figure 1. Arizona Medical Marijuana Active Qualifying Patients Characteristics by Gender and Age (N = 143,239)

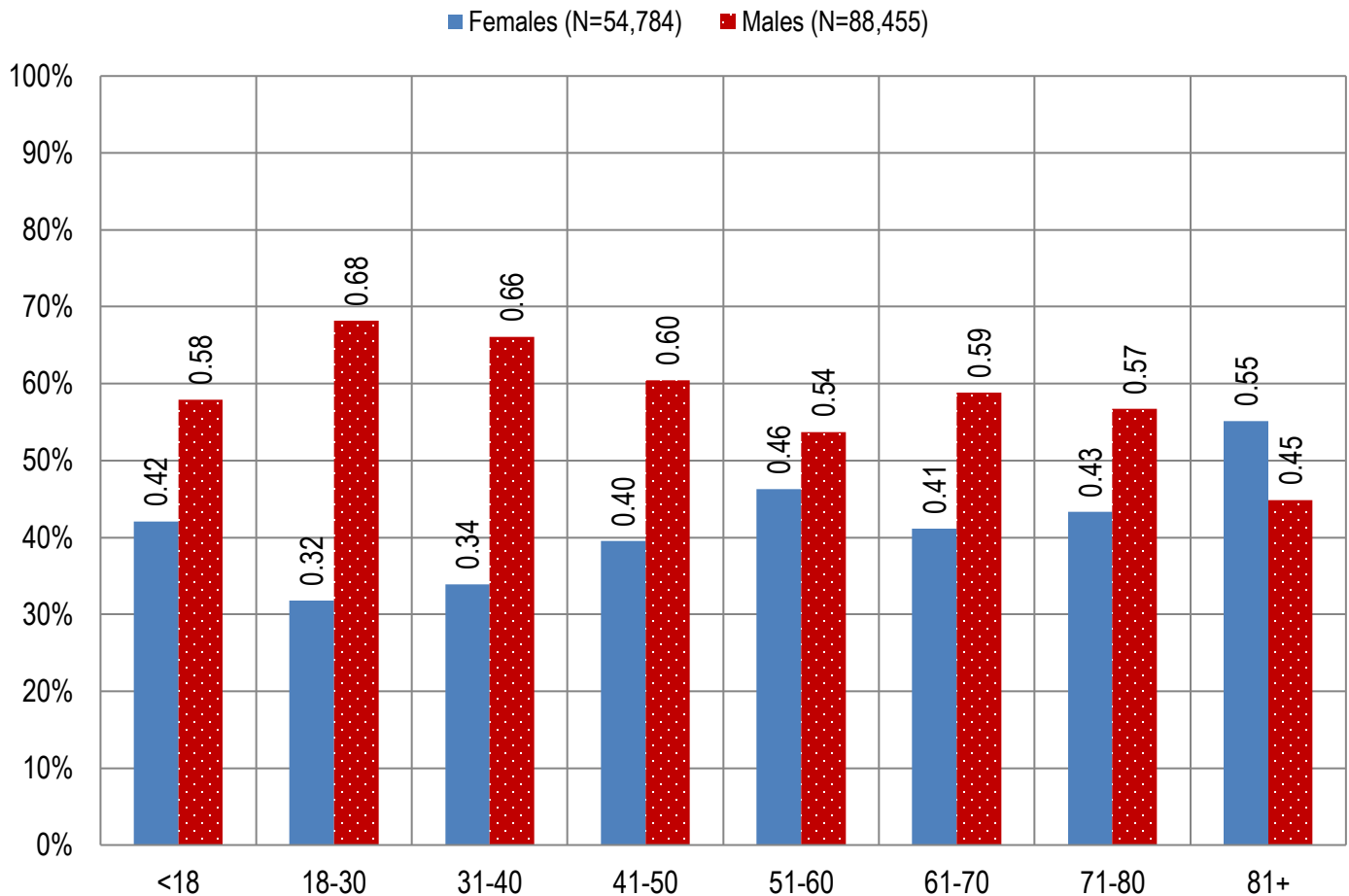


Table 4. Arizona Medical Marijuana Active Qualifying Patients Medical Condition Profile

Patient medical condition profile of Active Cardholders [¶]	Totals	Percent Total
Alzheimer's	68	0.05%
Cachexia	127	0.09%
Cancer	3,626	2.53%
Chronic Pain	120,793	84.33%
Crohn's Disease	518	0.36%
Glaucoma	967	0.68%
Hepatitis C	900	0.63%
HIV/AIDS	613	0.43%
Muscle Spasms	1,163	0.81%
Nausea	790	0.55%
Post-Traumatic Stress Disorder (PTSD)	1,914	1.34%
Sclerosis	44	0.03%
Seizures	1,132	0.79%
Two Or More Conditions	10,584	7.39%
TOTAL	143,239	100.00%

[¶]Unique debilitating conditions

Figure 2. Arizona Medical Marijuana Active Designated Caregiver Characteristics by Gender and Age (N = 918)

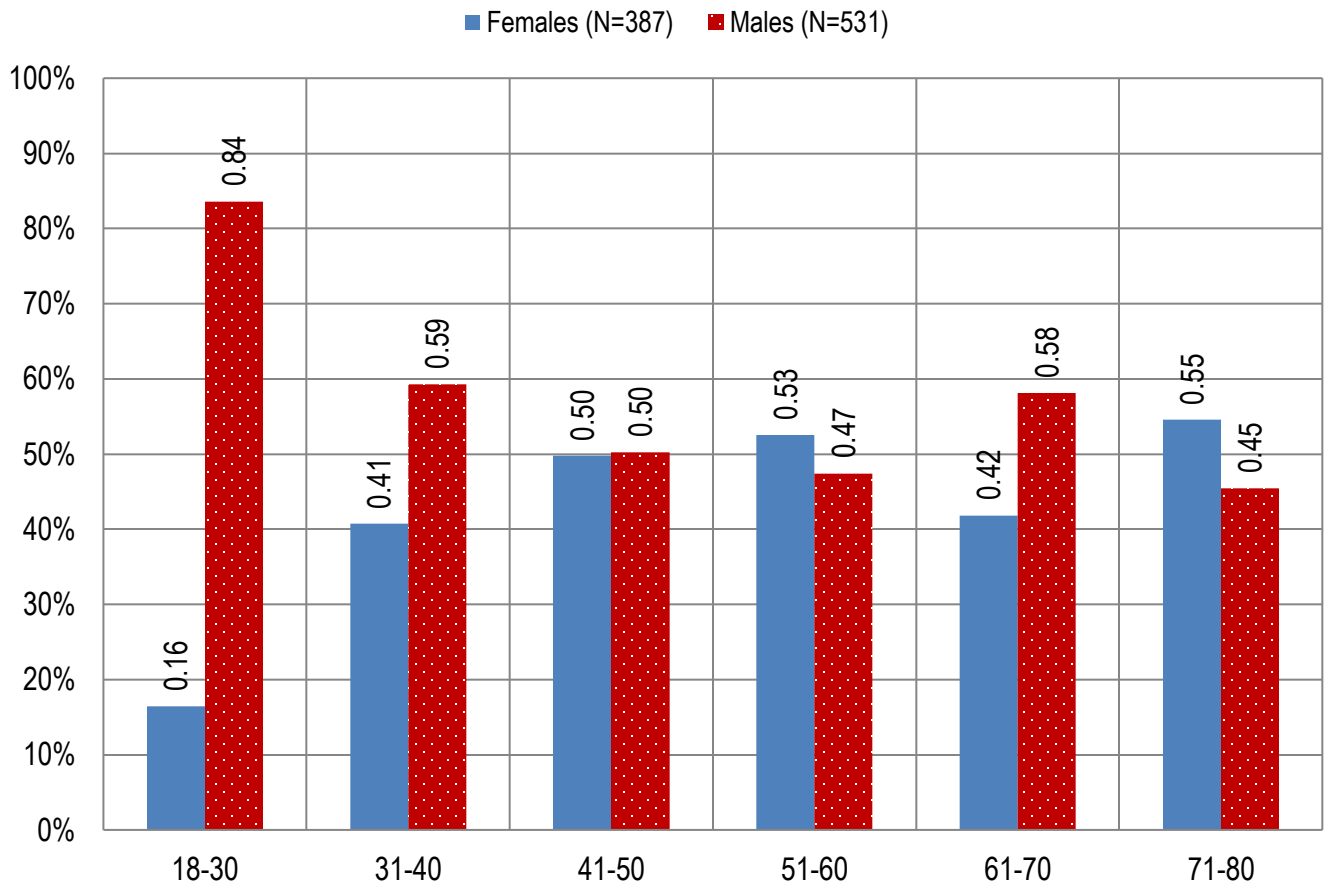


Table 5. Arizona Medical Marijuana Active Qualifying Patients and Designated Caregivers Authorized for Cultivation

Active cardholders cultivation status	Totals	Percent Total
Qualifying patients (n =143,239)	1,663	1.16%
Caregivers (n =918)	391	42.59%

Table 6. Frequency of Qualifying Patients, Caregivers, and Dispensary Agents by County of Residence

County	Qualifying Patients	Caregivers	Dispensary Agents*
Apache County	793	Count Under 20	Count Under 20
Cochise County	2,098	Count Under 20	113
Coconino County	3,157	35	106
Gila County	1,390	Count Under 20	38
Graham County	559	Count Under 20	Count Under 20
Greenlee County	157	Count Under 20	Count Under 20
La Paz County	378	Count Under 20	20
Maricopa County	90,564	545	2,570
Mohave County	5,086	Count Under 20	133
Navajo County	1,906	20	268
Pima County	19,835	120	450
Pinal County	7,864	46	164
Santa Cruz County	431	Count Under 20	83
Yavapai County	7,504	60	344
Yuma County	1,517	Count Under 20	Count Under 20
TOTAL	143,239	918	4,353

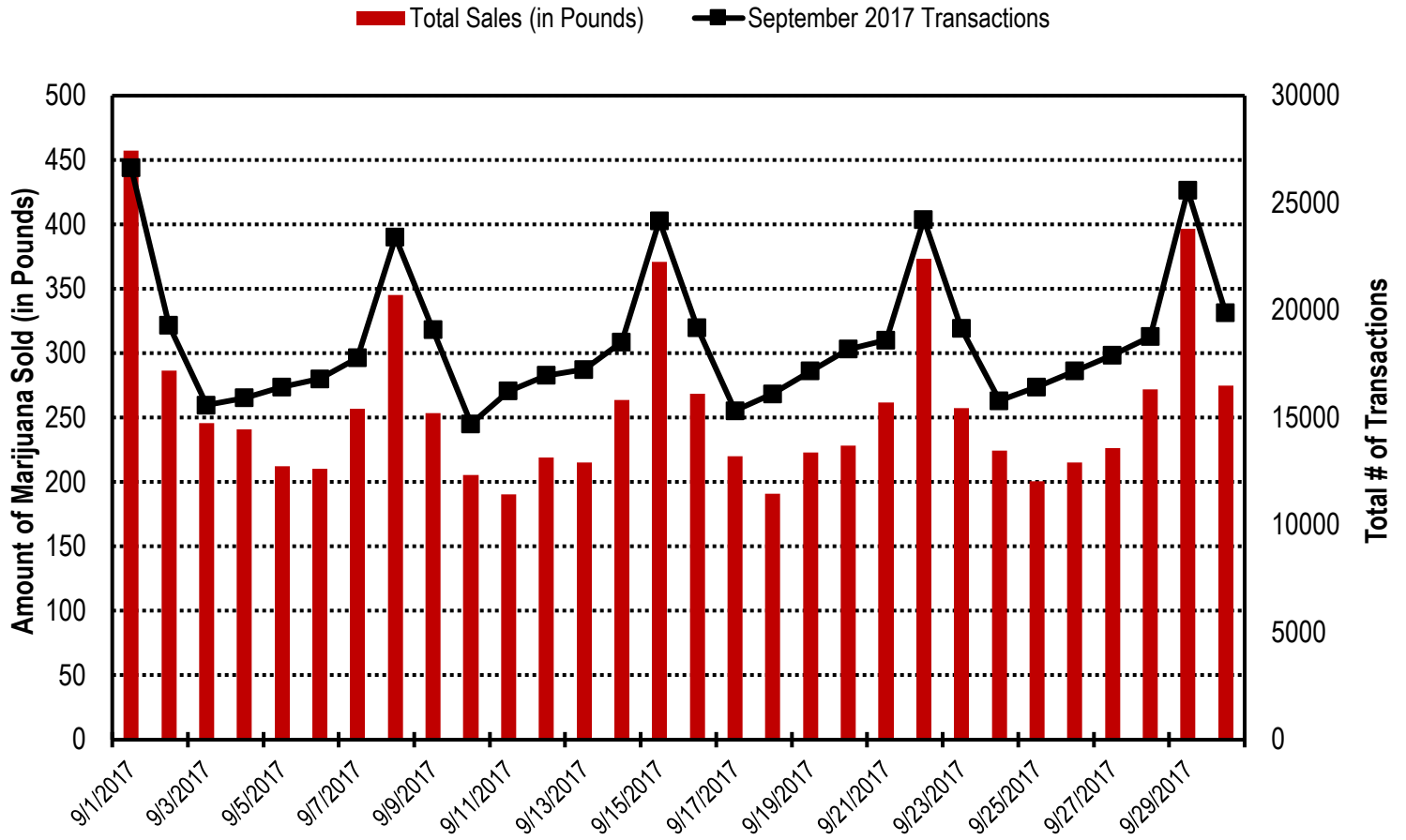
* 33 Dispensary Agents are located outside of Arizona.

Table 7. Type and Amount of Transactions at Medical Marijuana Dispensaries in September, 2017

Type of Transaction [†]	Ounces (oz.)	Pounds
Marijuana	115,967.00	7,247.94
Marijuana Edible	4,832.90	302.06
Marijuana Other	4,108.49	256.78
Total Marijuana Sold	124,908.40	7,806.78

[†]Amounts have been rounded and may not added to exact totals

Figure 4. Daily Transactions and Amount of Marijuana Sold in September, 2017



YEAR TO DATE

Table 1a. Arizona Medical Marijuana Applications Received- Application Profile

Applications Received Cardholder Profile	Totals	Percent Total
Qualifying patients (QPs)	123,882	94.33%
Caregivers (CGs)	1,683	1.28%
Dispensary Agents (DA)	5,760	4.39%
Total	131,325	100.00%

*Note: For caregivers and dispensary agents, these data reflect unique individuals, not the number of cards.

Table 1b. Arizona Medical Marijuana Licensed Qualifying Patients, Designated Caregivers and Dispensary Agents Profile

Applications Approved Cardholder Profile	Totals	Percent Total
Qualifying patients (QPs)	122,154	94.56%
Caregivers (CGs)	1,607	1.24%
Dispensary Agents (DA)	5,424	4.20%
Total	129,185	100.00%

*Note: For caregivers and dispensary agents, these data reflect unique individuals, not the number of cards.

Table 2. Arizona Medical Marijuana Licensed Qualifying Patient Profile

Applications Received for Qualifying Patients	Totals	Percent Total
New applications	77,483	63.43%
Renewal applications	37,460	30.67%
Changed demographics	2,944	2.41%
Added Caregivers	348	0.28%
Change Dup	3,876	3.17%
Replaced Caregivers	37	0.03%
Removed Caregivers	6	0.00%
Total	122,154	100.00%

Table 3a. Arizona Medical Marijuana Applications Received- Patient Characteristics

Characteristics of Applications Received who are Qualified Patients	Totals (N = 123,882)	Percent Total
Patient Age-groups		
Less than 18 years	191	0.15%
18 to 30 years	33,044	26.67%
31 to 40 years	25,655	20.71%
41 to 50 years	18,904	15.26%
51 to 60 years	20,825	16.81%
61 to 70 years	19,014	15.35%
71 to 80 years	5,137	4.15%
81 and older	1,112	0.90%
Patient Gender		
Male	76,405	61.68%
Female	47,477	38.32%

Table 3b. Arizona Medical Marijuana Licensed Qualifying Patient Characteristics

Characteristics of Approved Applications who are Qualified Patients	Totals (N = 122,154)	Percent Total
Patient Age-groups		
Less than 18 years	173	0.14%
18 to 30 years	32,588	26.68%
31 to 40 years	25,314	20.72%
41 to 50 years	18,636	15.26%
51 to 60 years	20,525	16.80%
61 to 70 years	18,774	15.37%
71 to 80 years	5,055	4.14%
81 and older	1,089	0.89%
Patient Gender		
Male	75,421	61.74%
Female	46,733	38.26%

Figure 1a. Arizona Medical Marijuana Applications Received- Patient Characteristics by Gender and Age

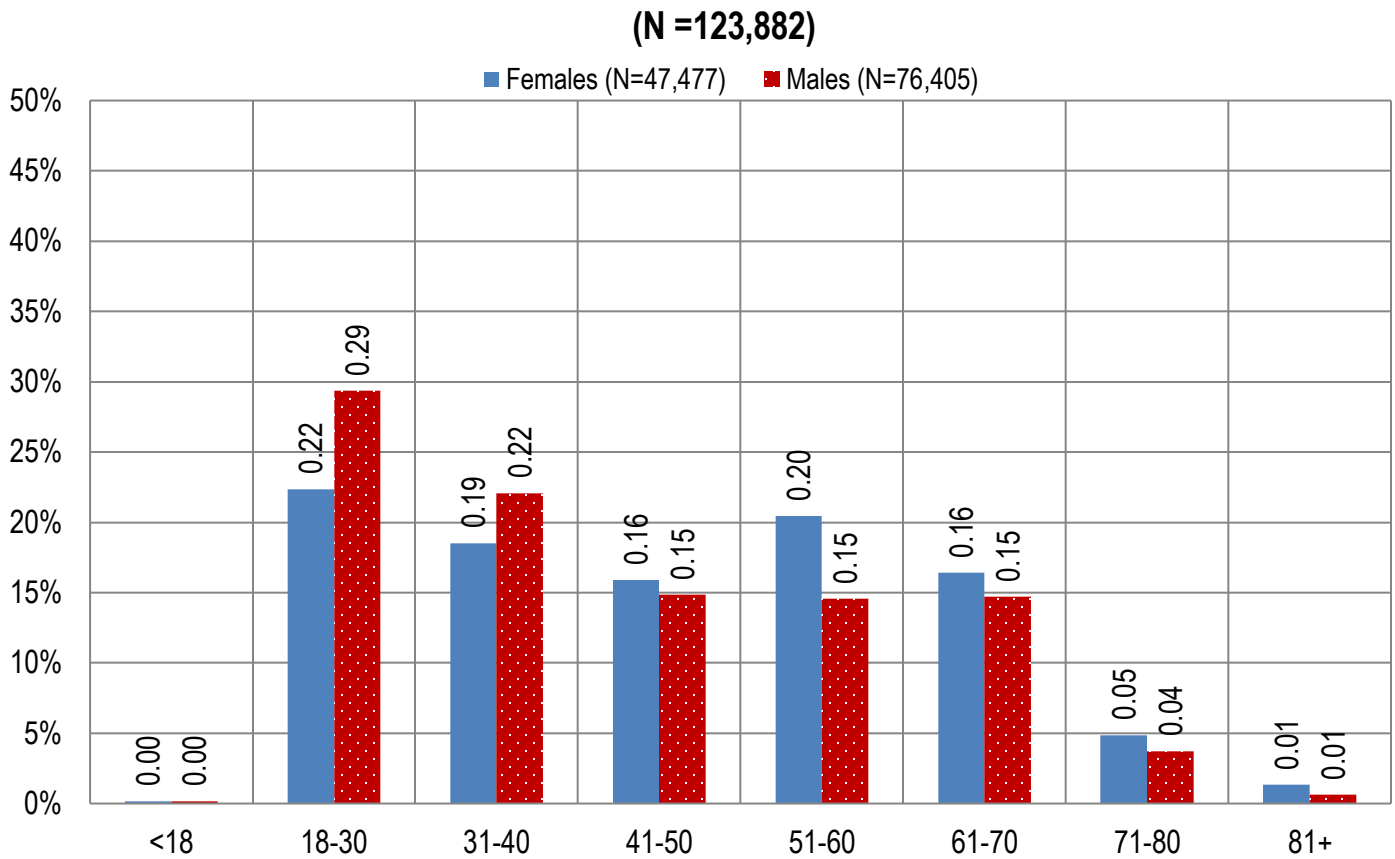


Figure 1b. Arizona Medical Marijuana Licensed Qualifying Patient Characteristics by Gender and Age

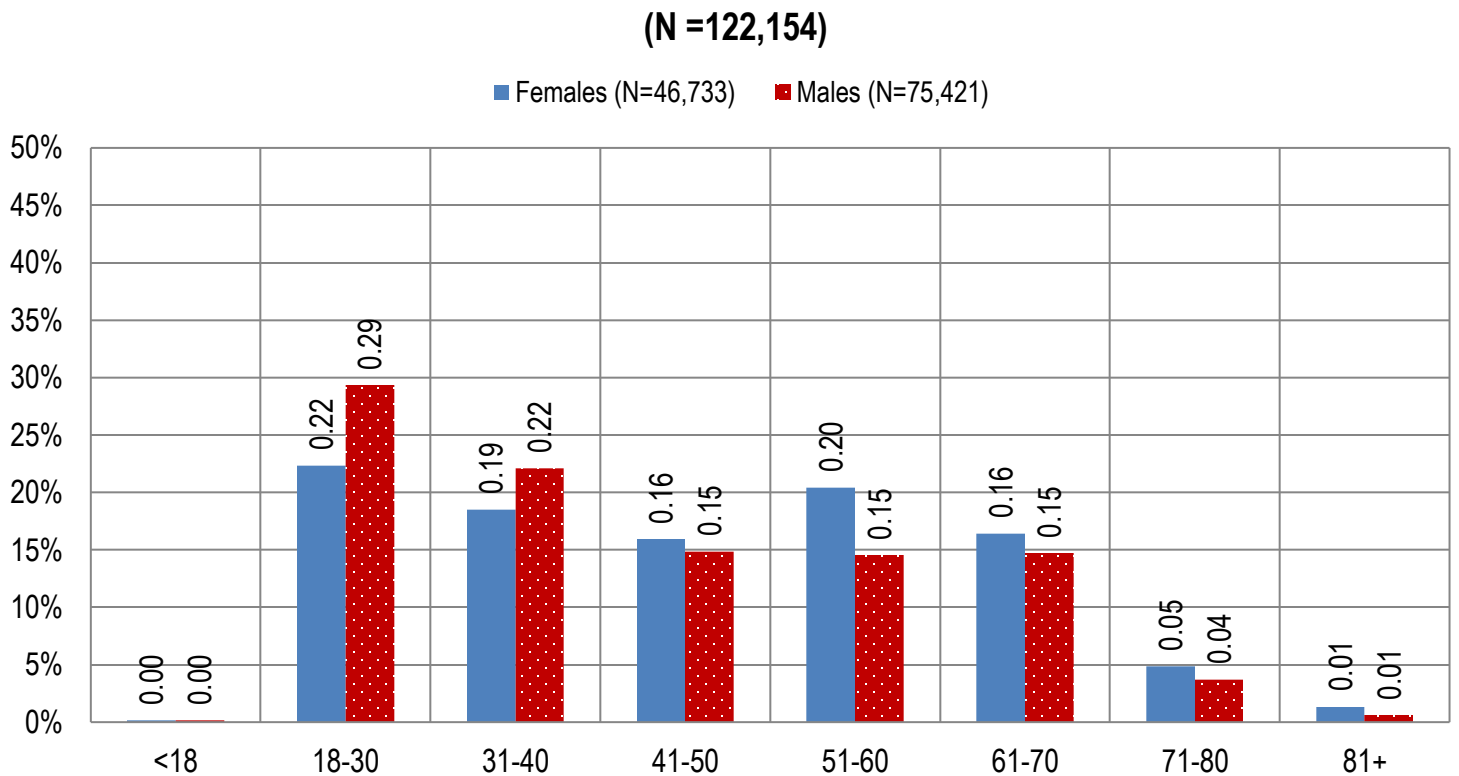


Figure 2a. Arizona Medical Marijuana Applications Received- Caregivers Characteristics by Gender and Age

(N = 1,683)

■ Females (N=510) ■ Males (N=1,173)

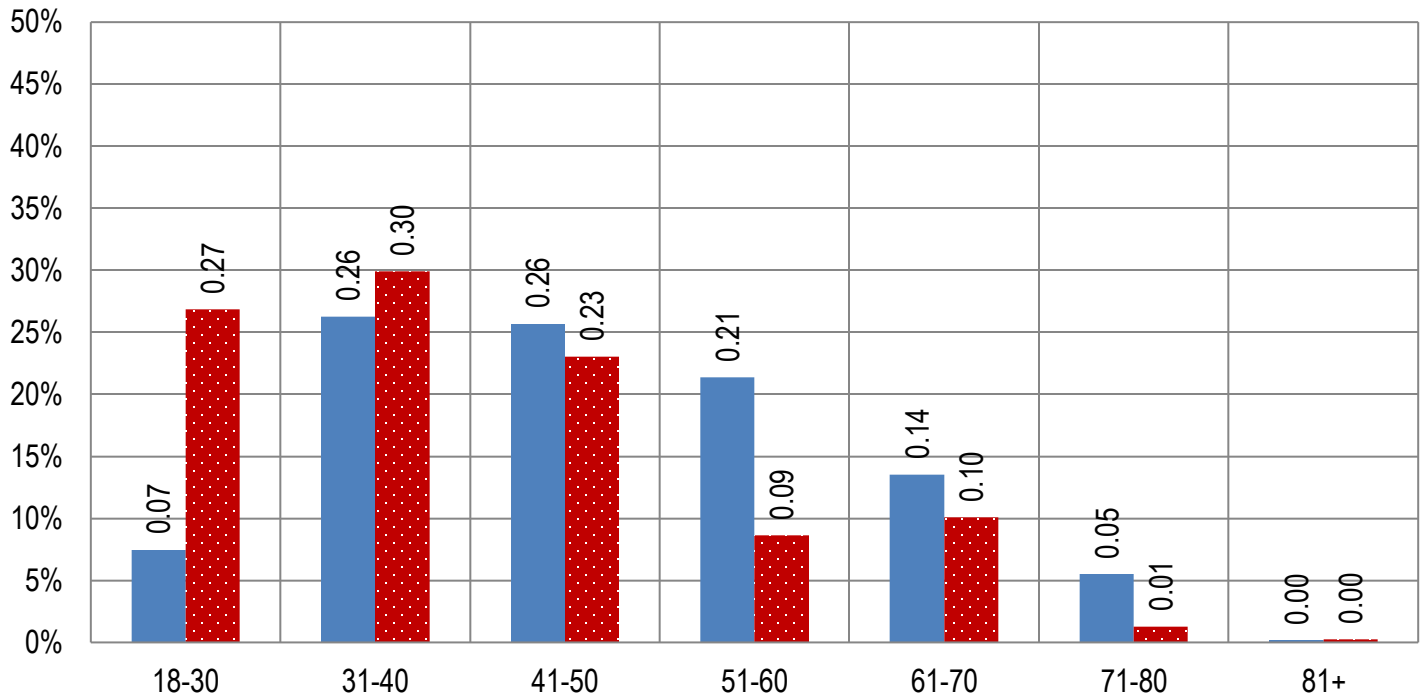


Figure 2b. Arizona Medical Marijuana Licensed Caregivers Characteristics by Gender and Age

(N = 1,607)

■ Females (N=477) ■ Males (N=1,130)

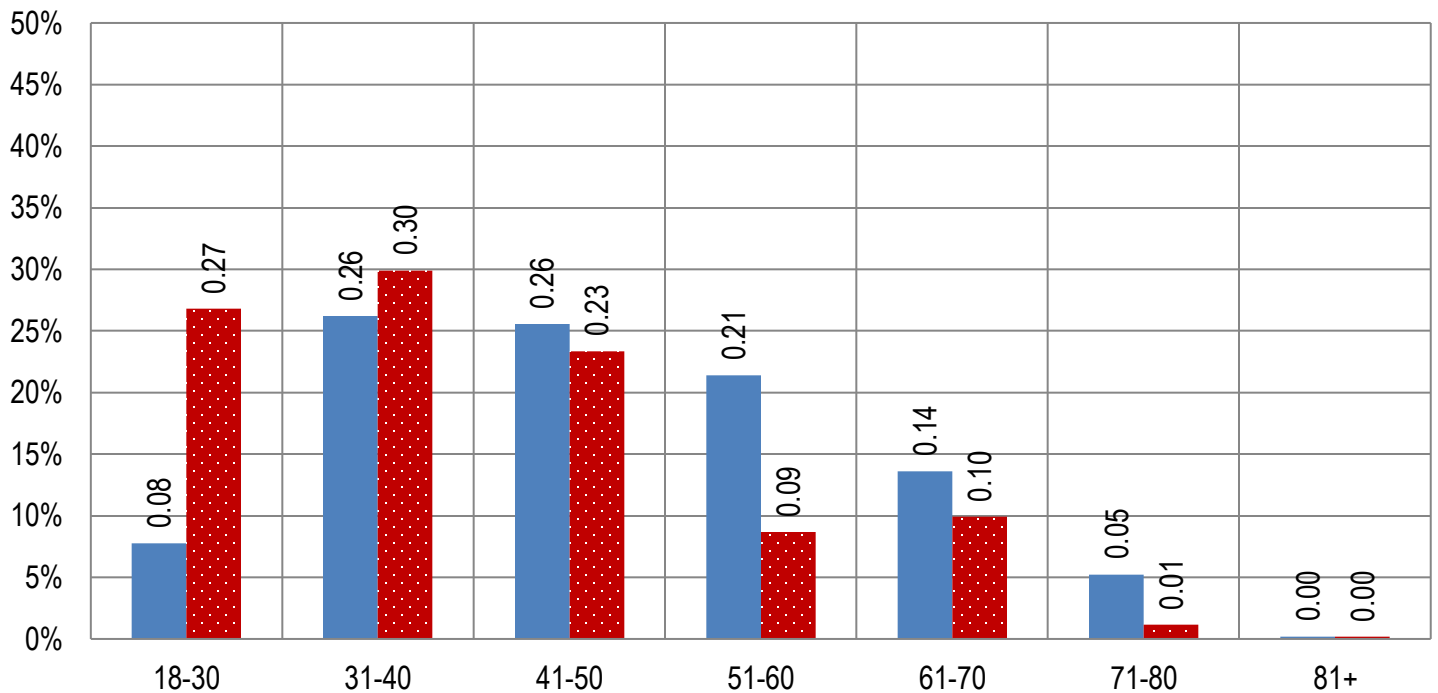


Table 4a. Arizona Medical Marijuana Applications Received- Patient Medical Conditions Profile

Patient medical condition profile of Applications Received [¶]	Totals	Percent Total
Alzheimer's	54	0.04%
Cachexia	98	0.08%
Cancer	2,945	2.38%
Chronic Pain	105,002	84.76%
Crohn's Disease	428	0.35%
Glaucoma	790	0.64%
Hepatitis C	792	0.64%
HIV/AIDS	511	0.41%
Muscle Spasms	1,042	0.84%
Nausea	672	0.54%
Post-Traumatic Stress Disorder (PTSD)	1,660	1.34%
Sclerosis	38	0.03%
Seizures	980	0.79%
Two Or More Conditions	8,870	7.16%
TOTAL	123,882	100.00%

[¶]Unique debilitating conditions

Table 4b. Arizona Medical Marijuana Licensed Qualifying Patients Medical Conditions Profile

Patient medical condition profile of Applications Approved [¶]	Totals	Percent Total
Alzheimer's	53	0.04%
Cachexia	96	0.08%
Cancer	2893	2.37%
Chronic Pain	103,572	84.79%
Crohn's Disease	427	0.35%
Glaucoma	779	0.64%
Hepatitis C	781	0.64%
HIV/AIDS	504	0.41%
Muscle Spasms	1032	0.84%
Nausea	661	0.54%
Post-Traumatic Stress Disorder (PTSD)	1,620	1.33%
Sclerosis	37	0.03%
Seizures	960	0.79%
Two Or More Conditions	8,739	7.15%
TOTAL	122,154	100.00%

[¶]Unique debilitating conditions

Table 5a. Arizona Medical Marijuana Applications Received for Applicants Seeking Authorization to Cultivate

Applications Received for cardholders with cultivation status	Totals	Percent total
Qualifying patients (n = 123,882)	1,569	1.27%
Caregivers (n = 1,683)	0	0.00%

Table 5b. Arizona Medical Marijuana Licensed Qualifying Patients and Designated Caregivers Authorized for Cultivation

Approved cardholders cultivation status	Totals	Percent total
Qualifying patients (n = 122,154)	1,569	1.28%
Caregivers (n = 1,607)	0	0.00%

Table 7a. Type and Amount of Transactions at Medical Marijuana Dispensaries in 2017 to Date

Type of Transaction [†]	Ounces (oz.)	Pounds
Marijuana	912,354.40	57,022.15
Marijuana Edible	42,426.49	2,651.66
Marijuana Other	30,632.06	1,914.50
Total Marijuana Sold	985,412.94	61,588.31

[†]Amounts have been rounded and may not added to exact totals

Figure 5. Transactions and Amount of Marijuana Sold in 2017 by Month

