

Arizona Medical Marijuana Program August 2018 Monthly Report

In December 2010, Arizona voters passed the Arizona Medical Marijuana Act (AMMA), A.R.S. §36-2801 *et seq.* The AMMA went into effect on April 14, 2011, making Arizona the fourteenth state to adopt a medical marijuana law. The AMMA designates the Arizona Department of Health Services (ADHS) as the licensing and issuing authority for the Arizona Medical Marijuana Program.

The AMMA monthly report highlights the most current program statistics. This includes data on active medical marijuana cardholders as well as transaction data from the sale of medical marijuana at non-profit medical marijuana dispensaries. Tables 1 through 6 and Figures 1 through 3 reflect data that are point in time. Table 7 and Figure 4 are data from the month of August, 2018. The Year-To-Date section which follows shows cumulative applications and approvals for 2018. For further information and statistics, please reference the Arizona Medical Marijuana Annual Report.

Table 1. Arizona Medical Marijuana Active Qualifying Patients, Designated Caregivers and Dispensary Agents Profile

Active Cardholder's Profile	Totals	Percent Total
1. Qualifying patients (QPs)	178,257	96.66%
2. Caregivers (CGs)	898	0.49%
3. Dispensary Agents (DA)	5,260	2.85%
Total	184,415	100.00%

*Note: For caregivers and dispensary agents, these data reflect unique individuals, not the number of cards.

Table 2. Arizona Medical Marijuana Active Qualifying Patients Profile

Application profile of qualifying patients	Totals	Percent Total
1. New applications	108,156	60.67%
2. Renewal applications	62,759	35.21%
3. Changed demographics	3,312	1.86%
4. Added Caregivers	190	0.11%
5. Change Dup	3,819	2.14%
6. Replaced Caregivers	18	0.01%
7. Removed Caregivers	3	0.00%
Total	178,257	100.00%

Approximately 11 percent (n = 19,899) of the active cardholders were determined to be SNAP eligible. Of the 19,899 that were determined to be eligible, 10,089 (~51%) were females and 9,810 (~49%) were males.

Table 3. Arizona Medical Marijuana Active Qualifying Patients Characteristics

Characteristics of Active Cardholders who are Qualified Patients	Totals (N =178,257)	Percent Total
Patient Age-groups		
Less than 18 years	190	0.11%
18 to 30 years	43,806	24.57%
31 to 40 years	37,006	20.76%
41 to 50 years	28,050	15.74%
51 to 60 years	28,877	16.20%
61 to 70 years	28,946	16.24%
71 to 80 years	9,481	5.32%
81 and older	1,901	1.07%
Patient Gender		
Male	106,787	59.91%
Female	71,470	40.09%

**Figure 1. Arizona Medical Marijuana Active Qualifying Patients Characteristics by Gender and Age
(N = 178,257)**

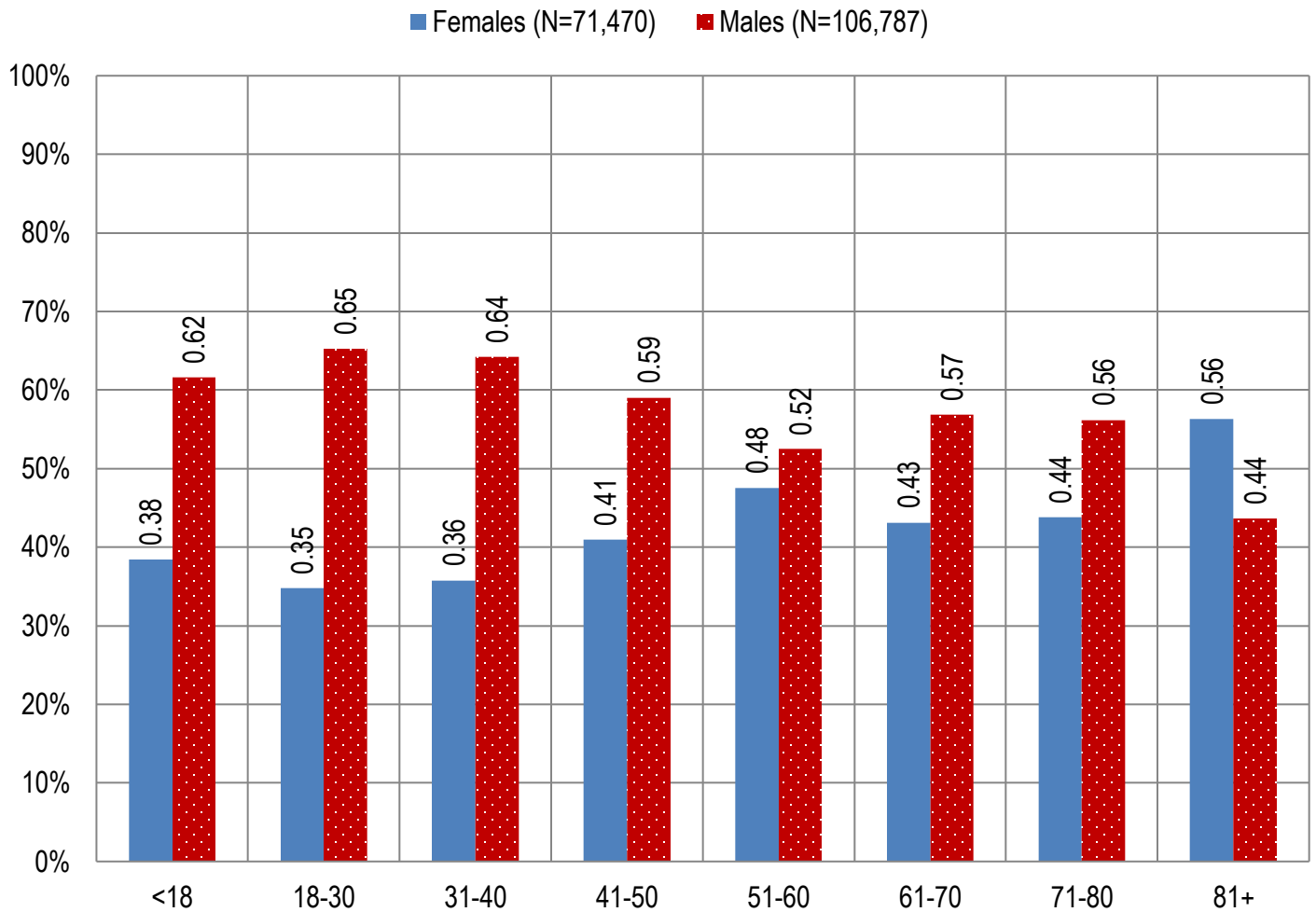


Table 4. Arizona Medical Marijuana Active Qualifying Patients Medical Condition Profile

Patient medical condition profile of Active Cardholders [¶]	Totals	Percent Total
Alzheimer's	65	0.04%
Cachexia	135	0.08%
Cancer	3,979	2.23%
Chronic Pain	155,458	87.21%
Crohn's Disease	572	0.32%
Glaucoma	1,106	0.62%
Hepatitis C	783	0.44%
HIV/AIDS	666	0.37%
Muscle Spasms	866	0.49%
Nausea	816	0.46%
Post-Traumatic Stress Disorder (PTSD)	2,257	1.27%
Sclerosis	37	0.02%
Seizures	1,240	0.70%
Two Or More Conditions	10,277	5.77%
TOTAL	178,257	100.00%

[¶]Unique debilitating conditions

Figure 2. Arizona Medical Marijuana Active Designated Caregiver Characteristics by Gender and Age (N = 898)

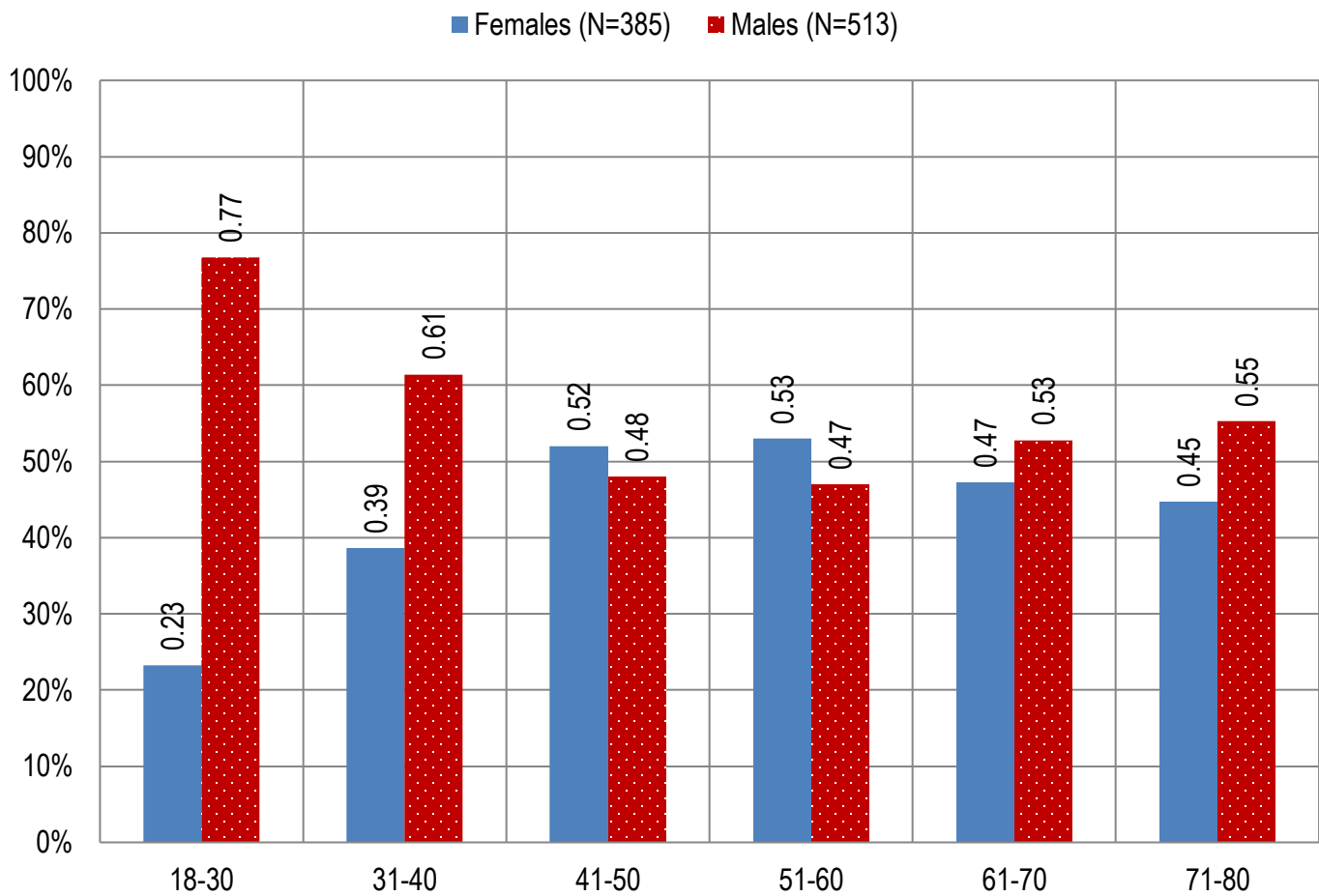


Table 5. Arizona Medical Marijuana Active Qualifying Patients and Designated Caregivers Authorized for Cultivation

Active cardholders cultivation status	Totals	Percent Total
Qualifying patients (n =178,257)	2,122	1.19%
Caregivers (n =898)	413	45.99%

Table 6. Frequency of Qualifying Patients, Caregivers, and Dispensary Agents by County of Residence

County	Qualifying Patients	Caregivers	Dispensary Agents*
Apache County	855	Count under 20	Count under 20
Cochise County	2,552	22	147
Coconino County	3,706	39	135
Gila County	1,733	Count under 20	34
Graham County	772	Count under 20	22
Greenlee County	196	Count under 20	Count under 20
La Paz County	342	Count under 20	Count under 20
Maricopa County	114,583	513	3,145
Mohave County	5,039	Count under 20	151
Navajo County	2,301	Count under 20	256
Pima County	24,854	141	574
Pinal County	10,257	42	197
Santa Cruz County	520	Count under 20	143
Yavapai County	8,922	42	380
Yuma County	1,625	Count under 20	Count under 20
TOTAL	178,257	898	5,260

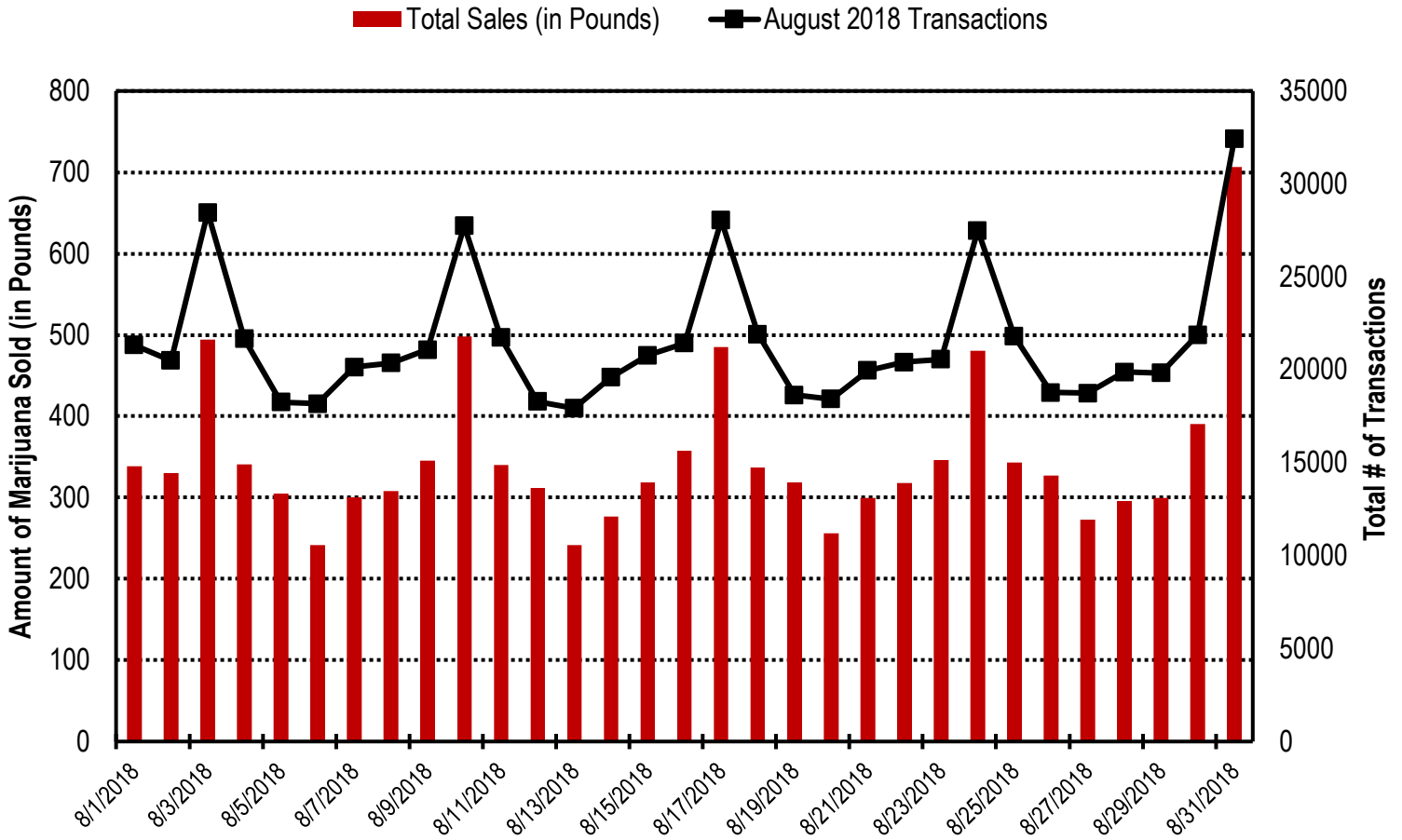
* 28 Dispensary Agents are located outside of Arizona.

Table 7. Type and Amount of Transactions at Medical Marijuana Dispensaries in August, 2018

Type of Transaction [†]	Ounces (oz.)	Pounds
Marijuana	160,076.04	10,004.75
Marijuana Edible	6,211.91	388.24
Marijuana Other	6,922.62	432.66
Total Marijuana Sold	173,210.57	10,825.66

[†]Amounts have been rounded and may not added to exact totals

Figure 4. Daily Transactions and Amount of Marijuana Sold in August, 2018



YEAR TO DATE

Table 1a. Arizona Medical Marijuana Applications Received- Application Profile

Applications Received Cardholder Profile	Totals	Percent Total
Qualifying patients (QPs)	137,765	94.97%
Caregivers (CGs)	1,545	1.07%
Dispensary Agents (DA)	5,748	3.96%
Total	145,058	100.00%

*Note: For caregivers and dispensary agents, these data reflect unique individuals, not the number of cards.

Table 1b. Arizona Medical Marijuana Licensed Qualifying Patients, Designated Caregivers and Dispensary Agents Profile

Applications Approved Cardholder Profile	Totals	Percent Total
Qualifying patients (QPs)	136,422	95.14%
Caregivers (CGs)	1,474	1.03%
Dispensary Agents (DA)	5,498	3.83%
Total	143,394	100.00%

*Note: For caregivers and dispensary agents, these data reflect unique individuals, not the number of cards.

Table 2. Arizona Medical Marijuana Licensed Qualifying Patient Profile

Applications Received for Qualifying Patients	Totals	Percent Total
New applications	78,476	57.52%
Renewal applications	50,011	36.66%
Changed demographics	32,76	2.40%
Added Caregivers	244	0.18%
Change Dup	43,91	3.22%
Replaced Caregivers	17	0.01%
Removed Caregivers	7	0.01%
Total	136,422	100.00%

Table 3a. Arizona Medical Marijuana Applications Received- Patient Characteristics

Characteristics of Applications Received who are Qualified Patients	Totals (N = 137,765)	Percent Total
Patient Age-groups		
Less than 18 years	158	0.11%
18 to 30 years	36,417	26.43%
31 to 40 years	28,975	21.03%
41 to 50 years	21,202	15.39%
51 to 60 years	22,003	15.97%
61 to 70 years	21,311	15.47%
71 to 80 years	64,44	4.68%
81 and older	1,255	0.91%
Patient Gender		
Male	82,522	59.90%
Female	55,243	40.10%

Table 3b. Arizona Medical Marijuana Licensed Qualifying Patient Characteristics

Characteristics of Approved Applications who are Qualified Patients	Totals (N = 136,422)	Percent Total
Patient Age-groups		
Less than 18 years	145	0.11%
18 to 30 years	36,120	26.48%
31 to 40 years	28,700	21.04%
41 to 50 years	20,983	15.38%
51 to 60 years	21,747	15.94%
61 to 70 years	21,120	15.48%
71 to 80 years	6,371	4.67%
81 and older	1,236	0.91%
Patient Gender		
Male	81,748	59.92%
Female	54,674	40.08%

Figure 1a. Arizona Medical Marijuana Applications Received- Patient Characteristics by Gender and Age (N =137,765)

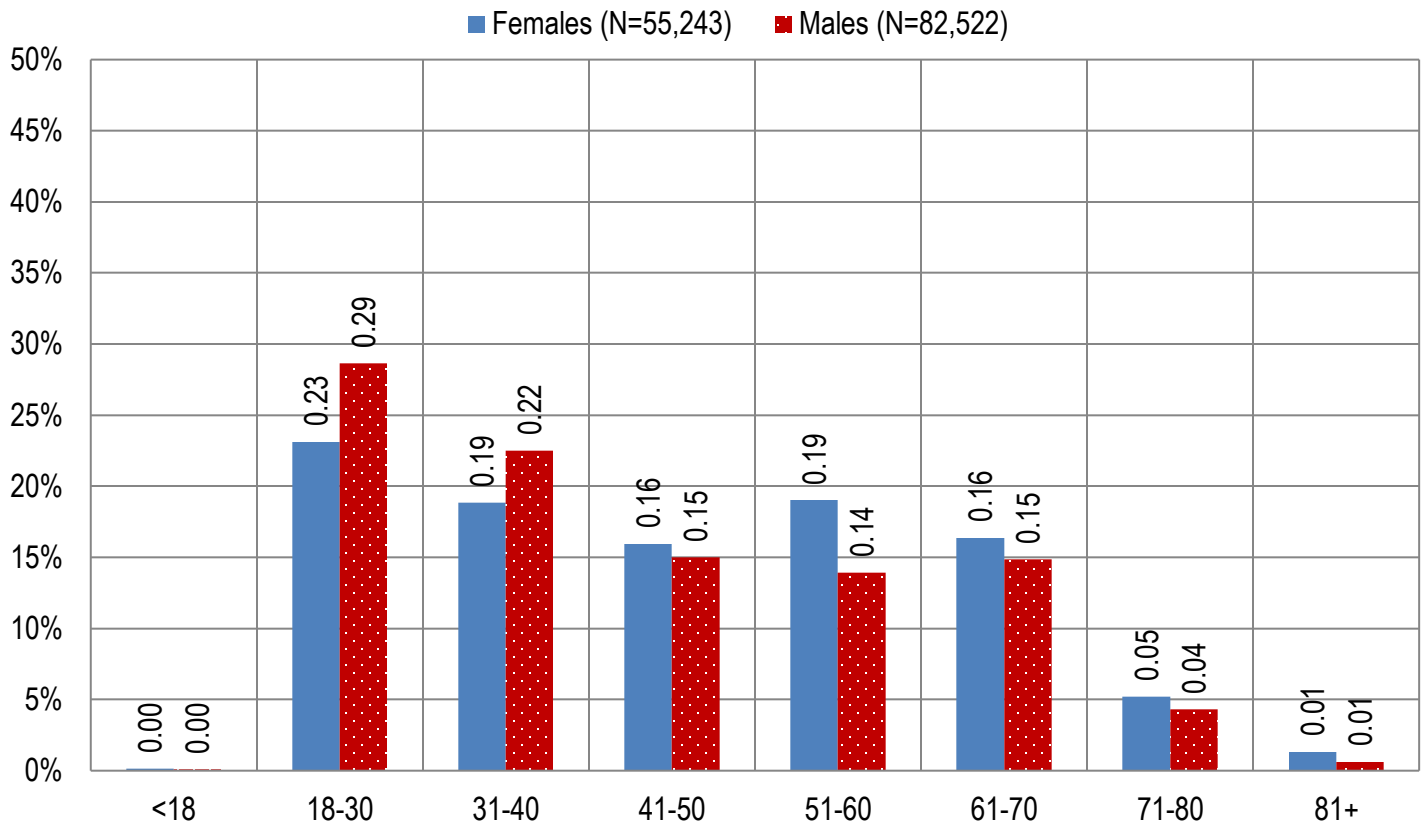


Figure 1b. Arizona Medical Marijuana Licensed Qualifying Patient Characteristics by Gender and Age (N =136,422)

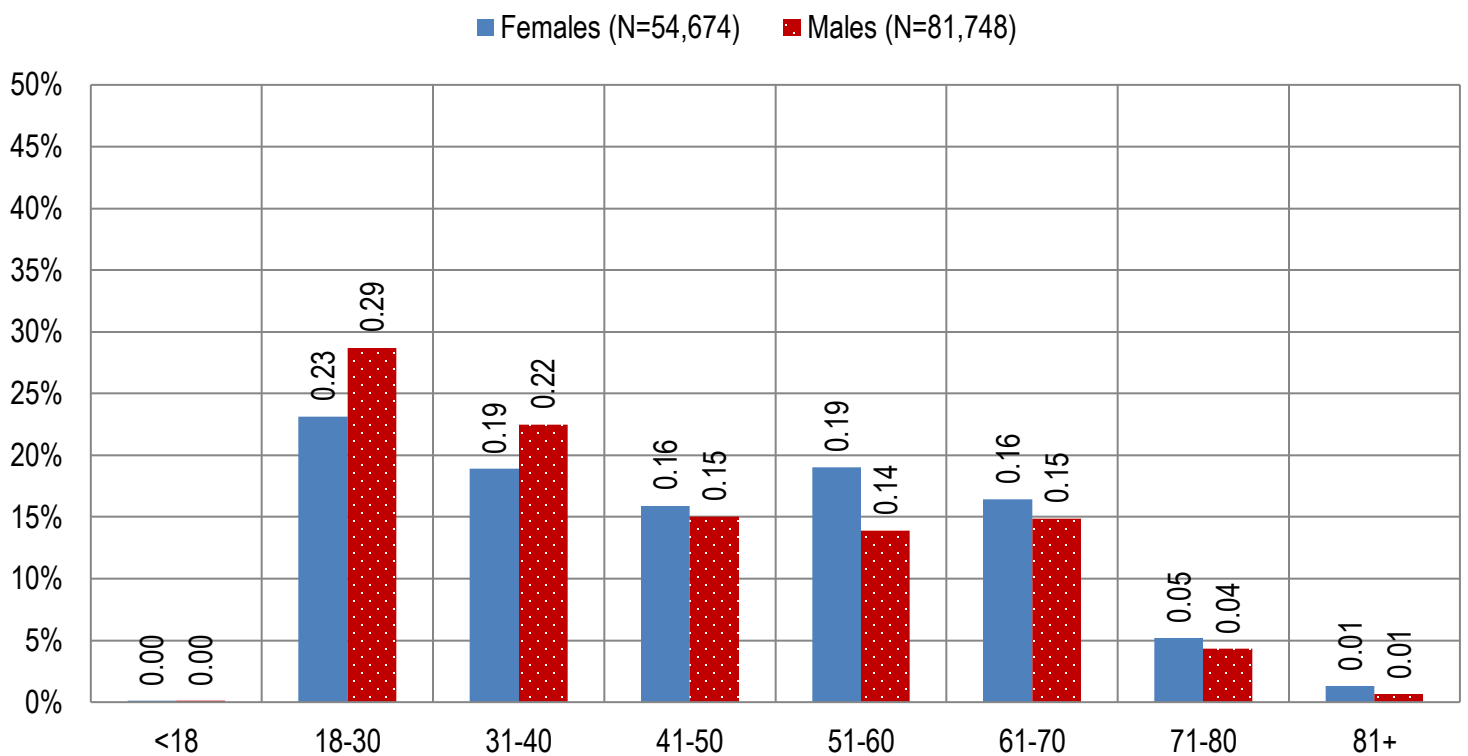


Figure 2a. Arizona Medical Marijuana Applications Received- Caregivers Characteristics by Gender and Age (N = 1,545)

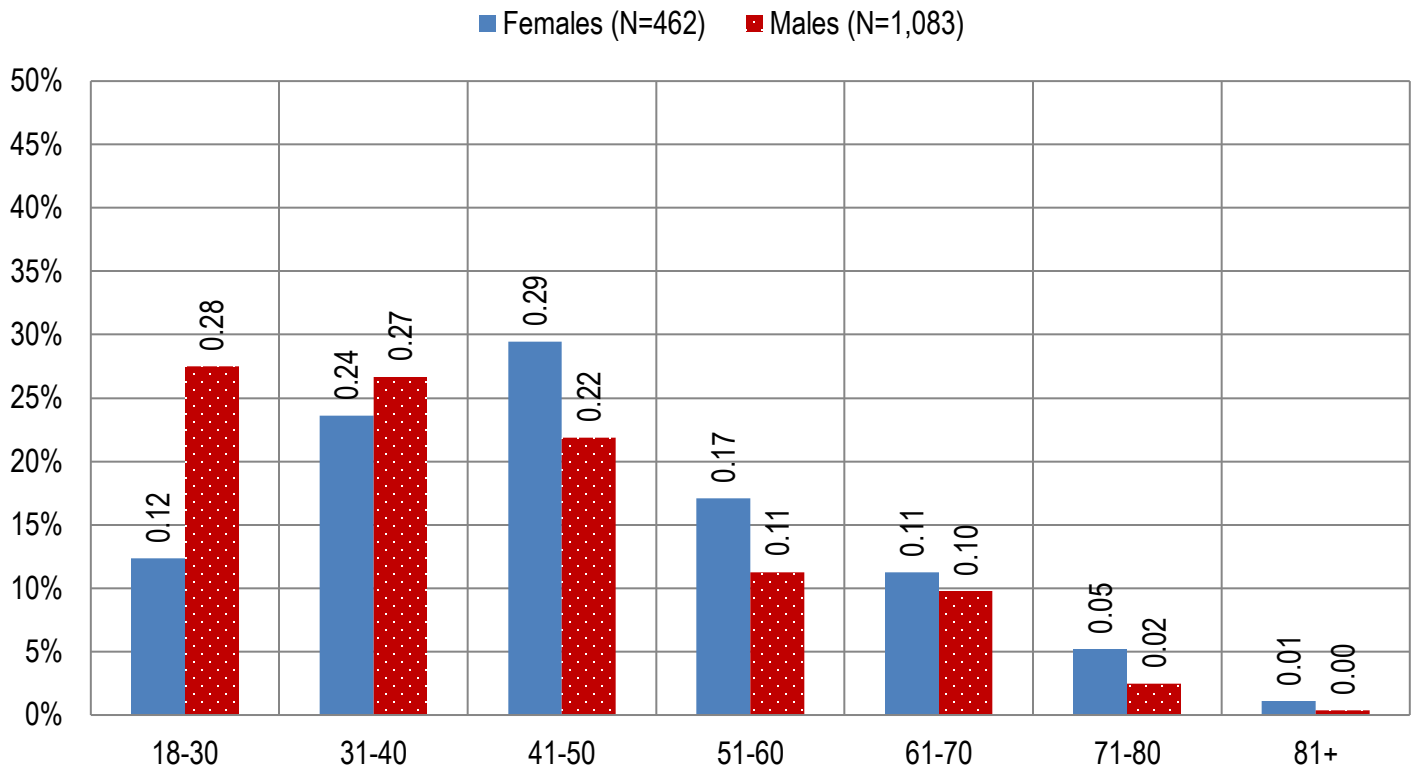


Figure 2b. Arizona Medical Marijuana Licensed Caregivers Characteristics by Gender and Age (N = 1,474)

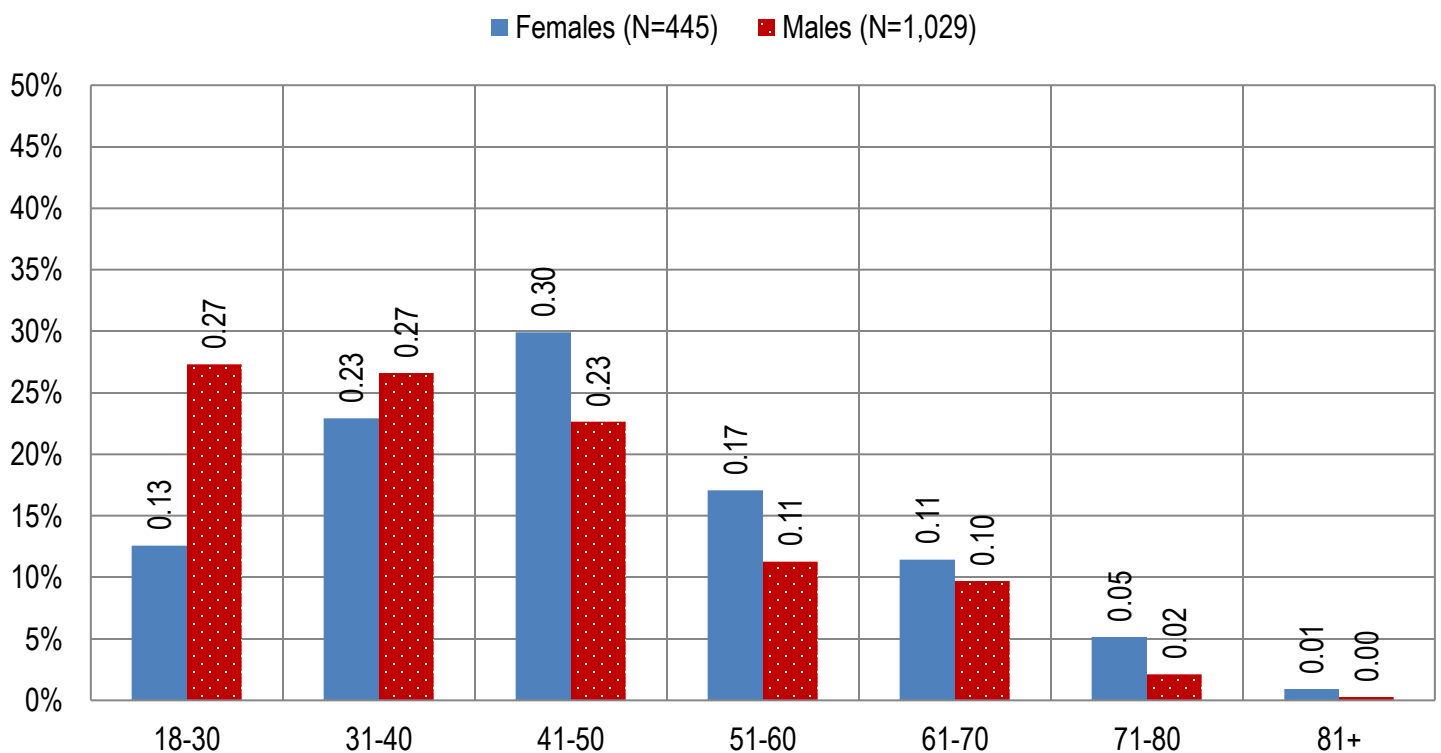


Table 4a. Arizona Medical Marijuana Applications Received- Patient Medical Conditions Profile

Patient medical condition profile of Applications Received [¶]	Totals	Percent Total
Alzheimer's	47	0.03%
Cachexia	102	0.07%
Cancer	2,874	2.09%
Chronic Pain	120,540	87.50%
Crohn's Disease	434	0.32%
Glaucoma	798	0.58%
Hepatitis C	589	0.43%
HIV/AIDS	512	0.37%
Muscle Spasms	623	0.45%
Nausea	596	0.43%
Post-Traumatic Stress Disorder (PTSD)	1,734	1.26%
Sclerosis	27	0.02%
Seizures	962	0.70%
Two Or More Conditions	7,927	5.75%
TOTAL	137,765	100.00%

[¶]Unique debilitating conditions

Table 4b. Arizona Medical Marijuana Licensed Qualifying Patients Medical Conditions Profile

Patient medical condition profile of Applications Approved[¶]	Totals	Percent Total
Alzheimer's	45	0.03%
Cachexia	100	0.07%
Cancer	2,841	2.08%
Chronic Pain	119,433	87.55%
Crohn's Disease	431	0.32%
Glaucoma	794	0.58%
Hepatitis C	582	0.43%
HIV/AIDS	505	0.37%
Muscle Spasms	614	0.45%
Nausea	587	0.43%
Post-Traumatic Stress Disorder (PTSD)	1,705	1.25%
Sclerosis	27	0.02%
Seizures	947	0.69%
Two Or More Conditions	7,811	5.73%
TOTAL	136,422	100.00%

[¶]Unique debilitating conditions

Table 5a. Arizona Medical Marijuana Applications Received for Applicants Seeking Authorization to Cultivate

Applications Received for cardholders with cultivation status	Totals	Percent total
Qualifying patients (n = 137,765)	1,843	1.34%

Table 5b. Arizona Medical Marijuana Licensed Qualifying Patients and Designated Caregivers Authorized for Cultivation

Approved cardholders cultivation status	Totals	Percent total
Qualifying patients (n = 136,422)	1,843	1.35%

Table 7a. Type and Amount of Transactions at Medical Marijuana Dispensaries in 2018 to Date

Type of Transaction [†]	Ounces (oz.)	Pounds
Marijuana	1,113,872.29	69,617.02
Marijuana Edible	52,381.65	3,273.85
Marijuana Other	49,856.70	3,116.04
Total Marijuana Sold	1,216,110.64	76,006.92

[†]Amounts have been rounded and may not added to exact totals

Figure 5. Transactions and Amount of Marijuana Sold in 2018 by Month

