

Arizona Medical Marijuana Program June 2018 Monthly Report

In December 2010, Arizona voters passed the Arizona Medical Marijuana Act (AMMA), A.R.S. §36-2801 *et seq.* The AMMA went into effect on April 14, 2011, making Arizona the fourteenth state to adopt a medical marijuana law. The AMMA designates the Arizona Department of Health Services (ADHS) as the licensing and issuing authority for the Arizona Medical Marijuana Program.

The AMMA monthly report highlights the most current program statistics. This includes data on active medical marijuana cardholders as well as transaction data from the sale of medical marijuana at non-profit medical marijuana dispensaries. Tables 1 through 6 and Figures 1 through 3 reflect data that are point in time. Table 7 and Figure 4 are data from the month of June, 2018. The Year-To-Date section which follows shows cumulative applications and approvals for 2018. For further information and statistics, please reference the Arizona Medical Marijuana Annual Report.

Table 1. Arizona Medical Marijuana Active Qualifying Patients, Designated Caregivers and Dispensary Agents Profile

Active Cardholder's Profile	Totals	Percent Total
1. Qualifying patients (QPs)	172,227	96.54%
2. Caregivers (CGs)	913	0.51%
3. Dispensary Agents (DA)	5,261	2.95%
Total	178,401	100.00%

*Note: For caregivers and dispensary agents, these data reflect unique individuals, not the number of cards.

Table 2. Arizona Medical Marijuana Active Qualifying Patients Profile

Application profile of qualifying patients	Totals	Percent Total
1. New applications	106,202	61.66%
2. Renewal applications	58,978	34.24%
3. Changed demographics	3,269	1.90%
4. Added Caregivers	199	0.12%
5. Change Dup	3,555	2.06%
6. Replaced Caregivers	19	0.01%
7. Removed Caregivers	5	0.00%
Total	172,227	100.00%

Approximately 11 percent (n = 19,218) of the active cardholders were determined to be SNAP eligible. Of the 19,218 that were determined to be eligible, 9,725 (~51%) were females and 9,493 (~49%) were males.

Table 3. Arizona Medical Marijuana Active Qualifying Patients Characteristics

Characteristics of Active Cardholders who are Qualified Patients	Totals (N =172,227)	Percent Total
Patient Age-groups		
Less than 18 years	198	0.11%
18 to 30 years	42838	24.87%
31 to 40 years	35681	20.72%
41 to 50 years	26972	15.66%
51 to 60 years	28110	16.32%
61 to 70 years	27790	16.14%
71 to 80 years	8849	5.14%
81 and older	1789	1.04%
Patient Gender		
Male	103,650	60.18%
Female	68,577	39.82%

**Figure 1. Arizona Medical Marijuana Active Qualifying Patients Characteristics by Gender and Age
(N = 172,227)**

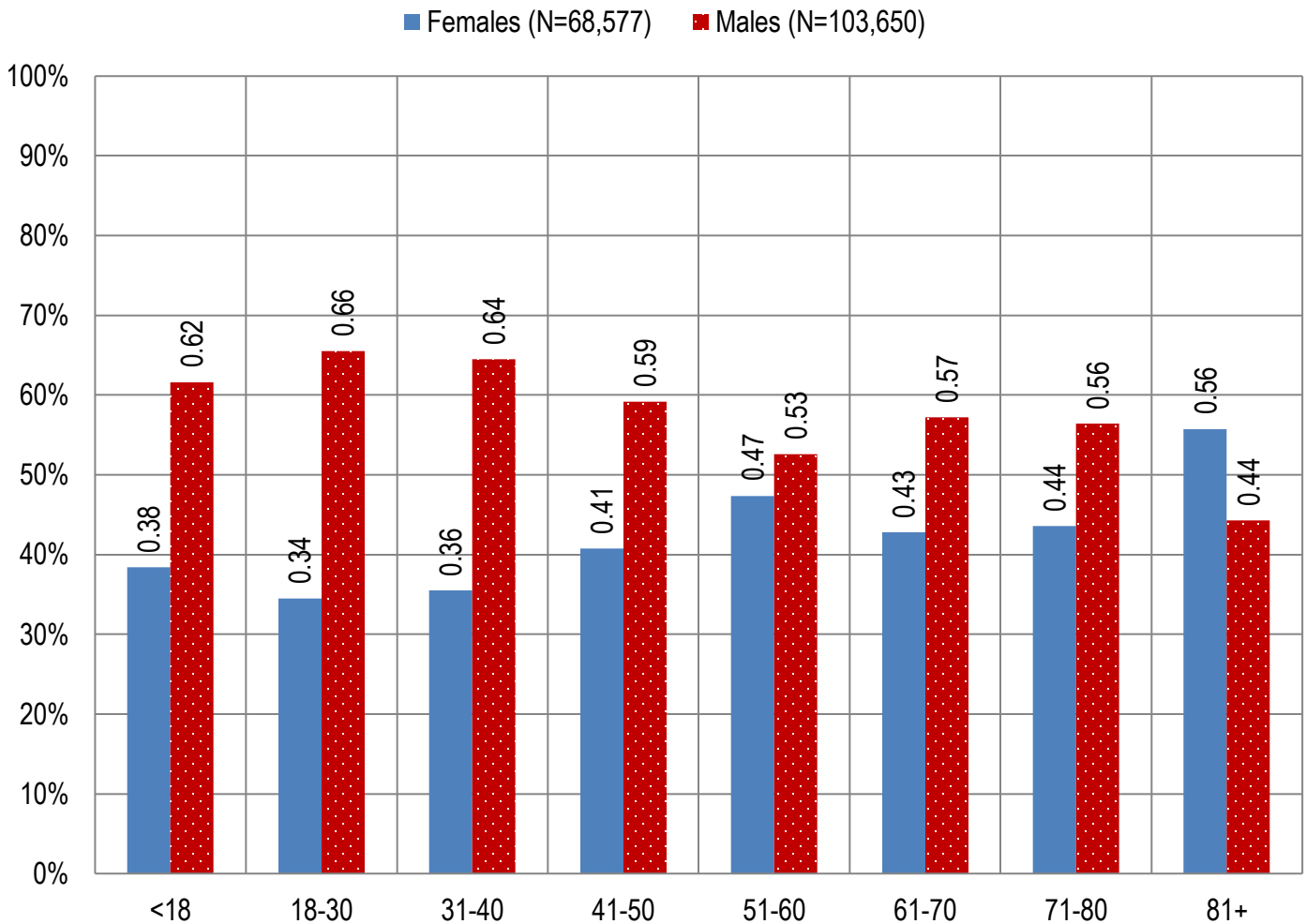


Table 4. Arizona Medical Marijuana Active Qualifying Patients Medical Condition Profile

Patient medical condition profile of Active Cardholders [¶]	Totals	Percent Total
Alzheimer's	61	0.04%
Cachexia	133	0.08%
Cancer	3866	2.24%
Chronic Pain	149783	86.97%
Crohn's Disease	553	0.32%
Glaucoma	1073	0.62%
Hepatitis C	803	0.47%
HIV/AIDS	652	0.38%
Muscle Spasms	944	0.55%
Nausea	811	0.47%
Post-Traumatic Stress Disorder (PTSD)	2177	1.26%
Sclerosis	38	0.02%
Seizures	1225	0.71%
Two Or More Conditions	10108	5.87%
TOTAL	172,227	100.00%

[¶]Unique debilitating conditions

Figure 2. Arizona Medical Marijuana Active Designated Caregiver Characteristics by Gender and Age (N = 913)

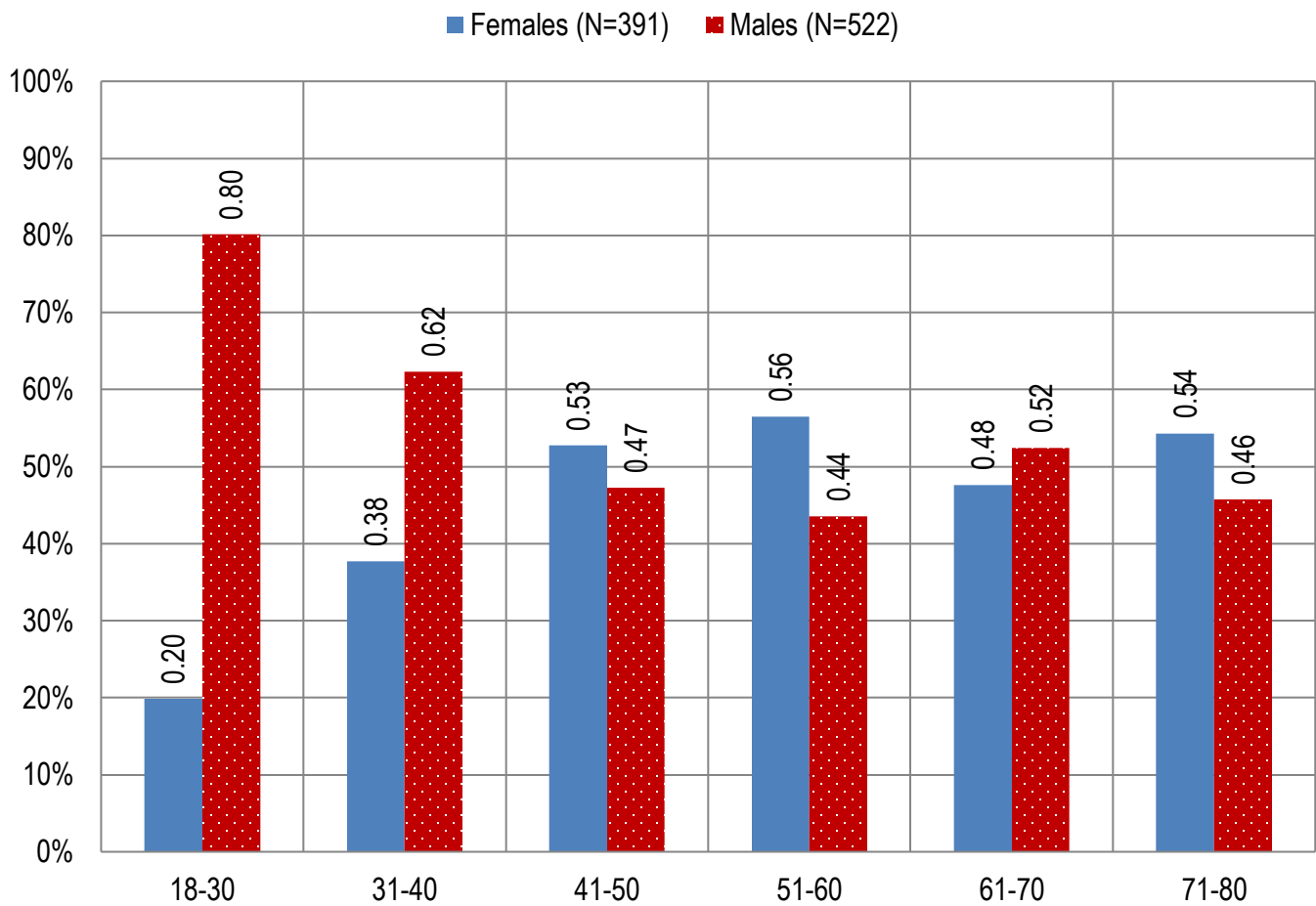


Table 5. Arizona Medical Marijuana Active Qualifying Patients and Designated Caregivers Authorized for Cultivation

Active cardholders cultivation status	Totals	Percent Total
Qualifying patients (n =172,227)	2,015	1.17%
Caregivers (n =913)	416	45.56%

Table 6. Frequency of Qualifying Patients, Caregivers, and Dispensary Agents by County of Residence

County	Qualifying Patients	Caregivers	Dispensary Agents*
Apache County	836	Count under 20	Count under 20
Cochise County	2,442	Count under 20	143
Coconino County	3,637	43	127
Gila County	1,708	Count under 20	34
Graham County	727	Count under 20	Count under 20
Greenlee County	185	Count under 20	Count under 20
La Paz County	338	Count under 20	22
Maricopa County	110,651	517	3,162
Mohave County	4,967	Count under 20	149
Navajo County	2,262	Count under 20	278
Pima County	23,874	144	548
Pinal County	9,821	46	206
Santa Cruz County	514	Count under 20	134
Yavapai County	8,691	49	377
Yuma County	1,574	Count under 20	Count under 20
TOTAL	172,227	913	5,261

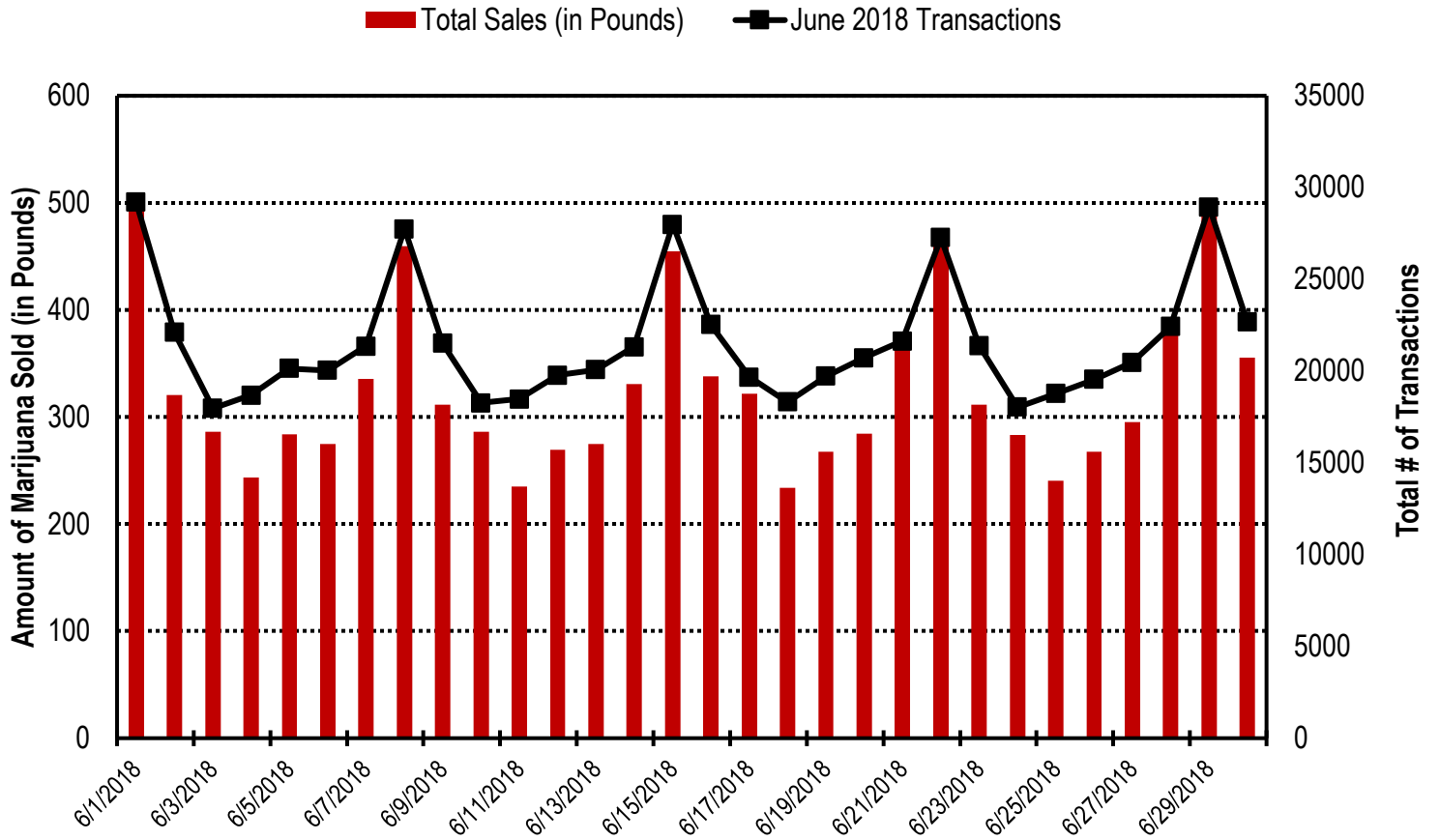
* 33 Dispensary Agents are located outside of Arizona.

Table 7. Type and Amount of Transactions at Medical Marijuana Dispensaries in June, 2018

Type of Transaction [†]	Ounces (oz.)	Pounds
Marijuana	142,986.03	8,936.63
Marijuana Edible	6,706.51	419.16
Marijuana Other	6,596.87	412.30
Total Marijuana Sold	156,289.41	9,768.09

[†]Amounts have been rounded and may not added to exact totals

Figure 4. Daily Transactions and Amount of Marijuana Sold in June, 2018



YEAR TO DATE

Table 1a. Arizona Medical Marijuana Applications Received- Application Profile

Applications Received Cardholder Profile	Totals	Percent Total
Qualifying patients (QPs)	105,332	95.09%
Caregivers (CGs)	1,167	1.05%
Dispensary Agents (DA)	4,271	3.86%
Total	110,770	100.00%

*Note: For caregivers and dispensary agents, these data reflect unique individuals, not the number of cards.

Table 1b. Arizona Medical Marijuana Licensed Qualifying Patients, Designated Caregivers and Dispensary Agents Profile

Applications Approved Cardholder Profile	Totals	Percent Total
Qualifying patients (QPs)	102,419	95.17%
Caregivers (CGs)	1,102	1.02%
Dispensary Agents (DA)	4,093	3.80%
Total	107,614	100.00%

*Note: For caregivers and dispensary agents, these data reflect unique individuals, not the number of cards.

Table 2. Arizona Medical Marijuana Licensed Qualifying Patient Profile

Applications Received for Qualifying Patients	Totals	Percent Total
New applications	59,246	57.85%
Renewal applications	37,348	36.47%
Changed demographics	2,399	2.34%
Added Caregivers	179	0.17%
Change Dup	3,227	3.15%
Replaced Caregivers	13	0.01%
Removed Caregivers	7	0.01%
Total	102,419	100.00%

Table 3a. Arizona Medical Marijuana Applications Received- Patient Characteristics

Characteristics of Applications Received who are Qualified Patients	Totals (N = 105,332)	Percent Total
Patient Age-groups		
Less than 18 years	122	0.12%
18 to 30 years	28,378	26.94%
31 to 40 years	22,412	21.28%
41 to 50 years	16,066	15.25%
51 to 60 years	16,570	15.73%
61 to 70 years	16,061	15.25%
71 to 80 years	4,798	4.56%
81 and older	925	0.88%
Patient Gender		
Male	63,168	59.97%
Female	42,164	40.03%

Table 3b. Arizona Medical Marijuana Licensed Qualifying Patient Characteristics

Characteristics of Approved Applications who are Qualified Patients	Totals (N = 102,419)	Percent Total
Patient Age-groups		
Less than 18 years	109	0.11%
18 to 30 years	27,676	27.02%
31 to 40 years	21,792	21.28%
41 to 50 years	15,606	15.24%
51 to 60 years	16,103	15.72%
61 to 70 years	15,617	15.25%
71 to 80 years	4,634	4.52%
81 and older	882	0.86%
Patient Gender		
Male	61,467	60.02%
Female	40,952	39.98%

Figure 1a. Arizona Medical Marijuana Applications Received- Patient Characteristics by Gender and Age

(N =105,332)

■ Females (N=42,164) ■ Males (N=63,168)

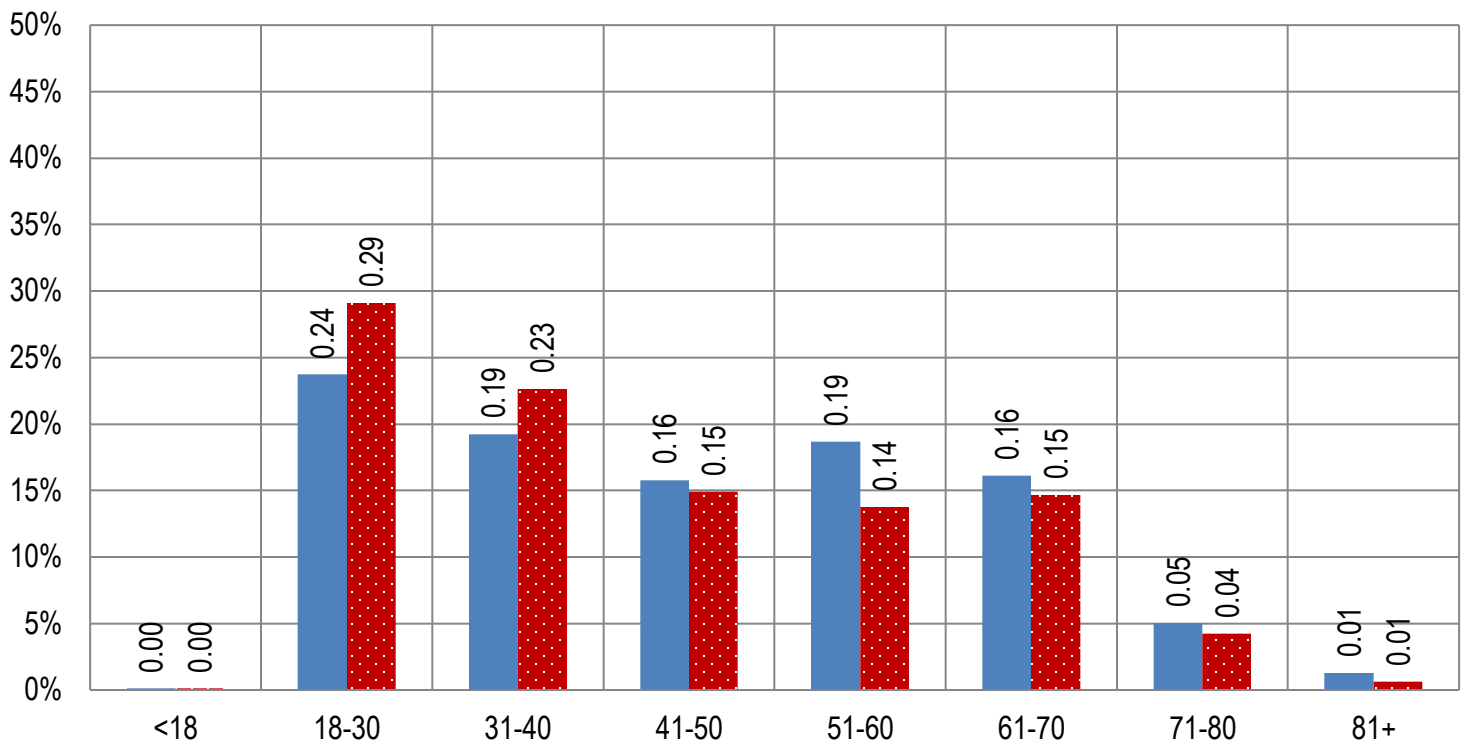


Figure 1b. Arizona Medical Marijuana Licensed Qualifying Patient Characteristics by Gender and Age

(N =102,419)

■ Females (N=40,952) ■ Males (N=61,467)

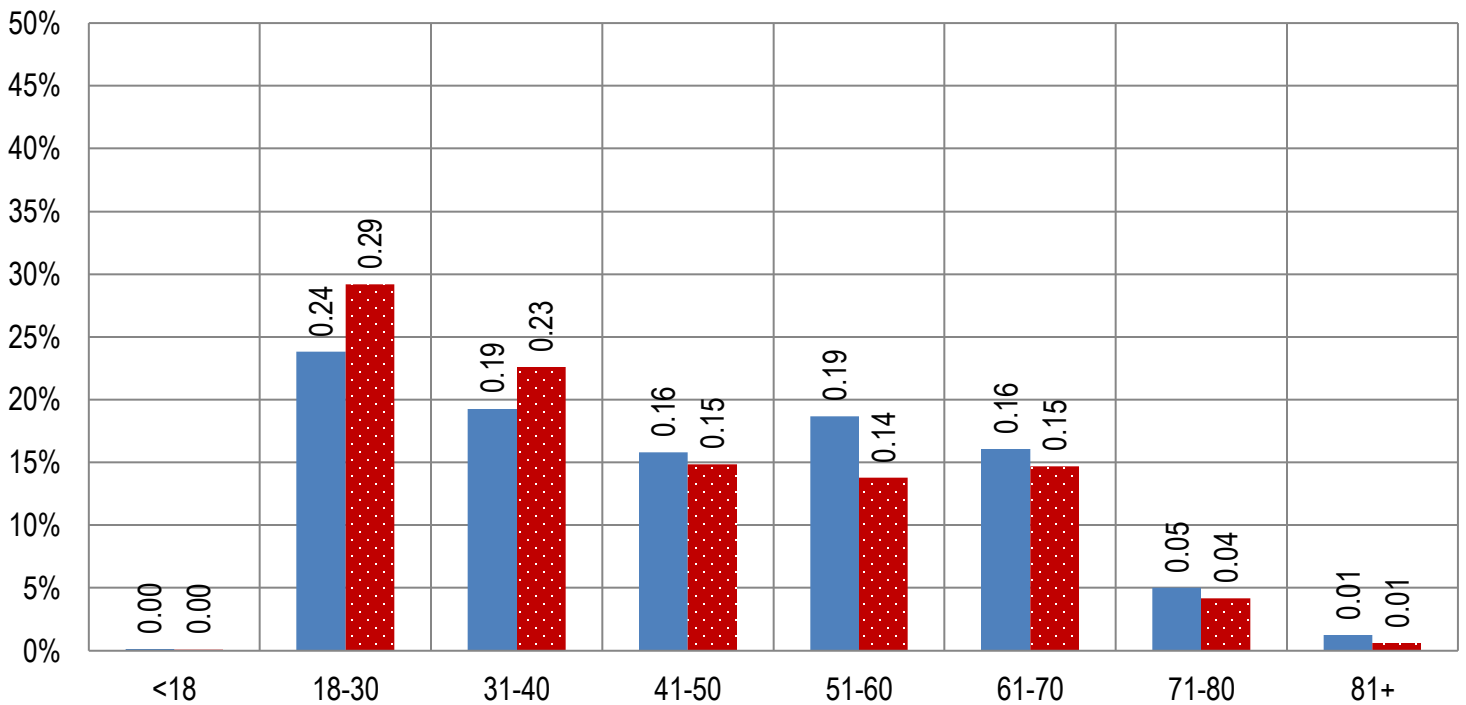


Figure 2a. Arizona Medical Marijuana Applications Received- Caregivers Characteristics by Gender and Age (N = 1,167)

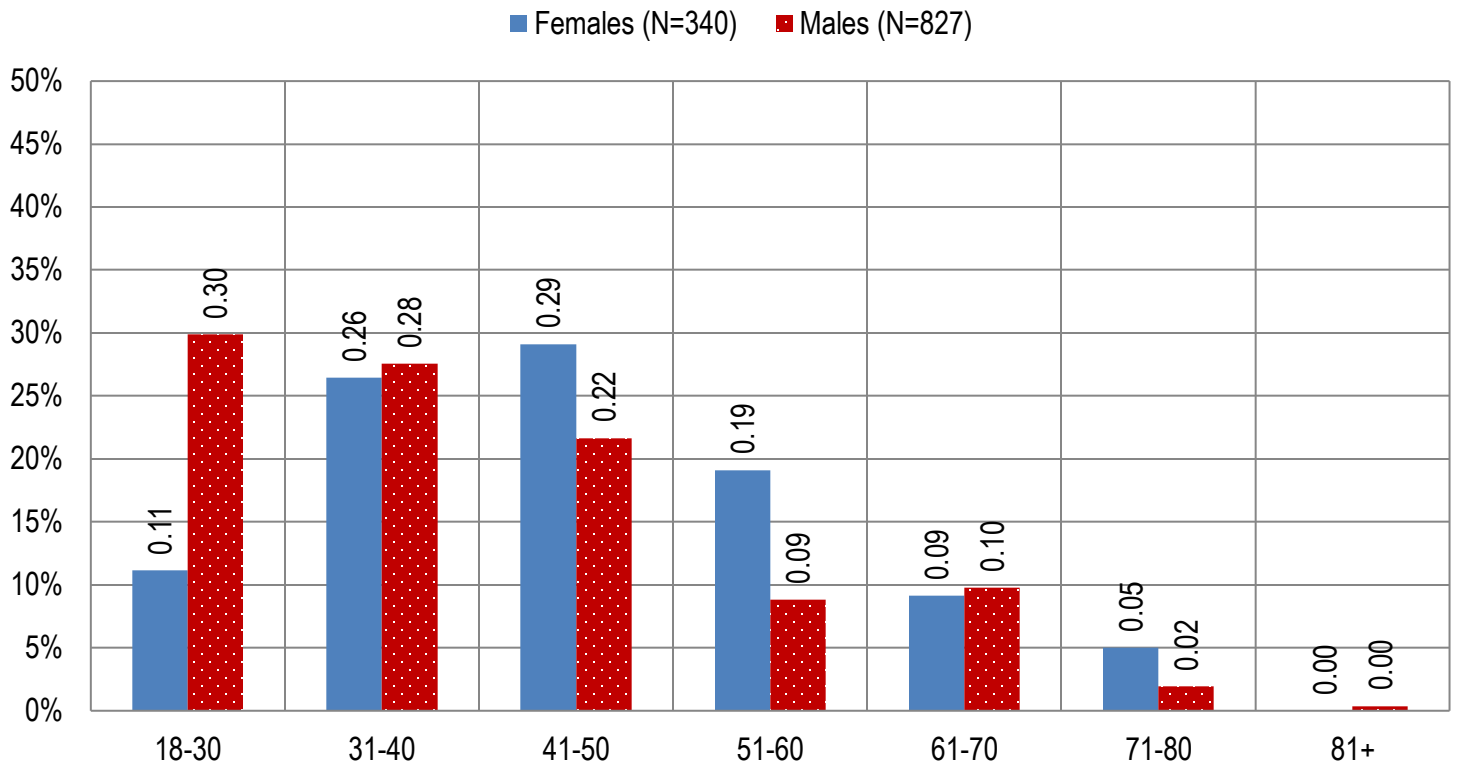


Figure 2b. Arizona Medical Marijuana Licensed Caregivers Characteristics by Gender and Age (N = 1,102)

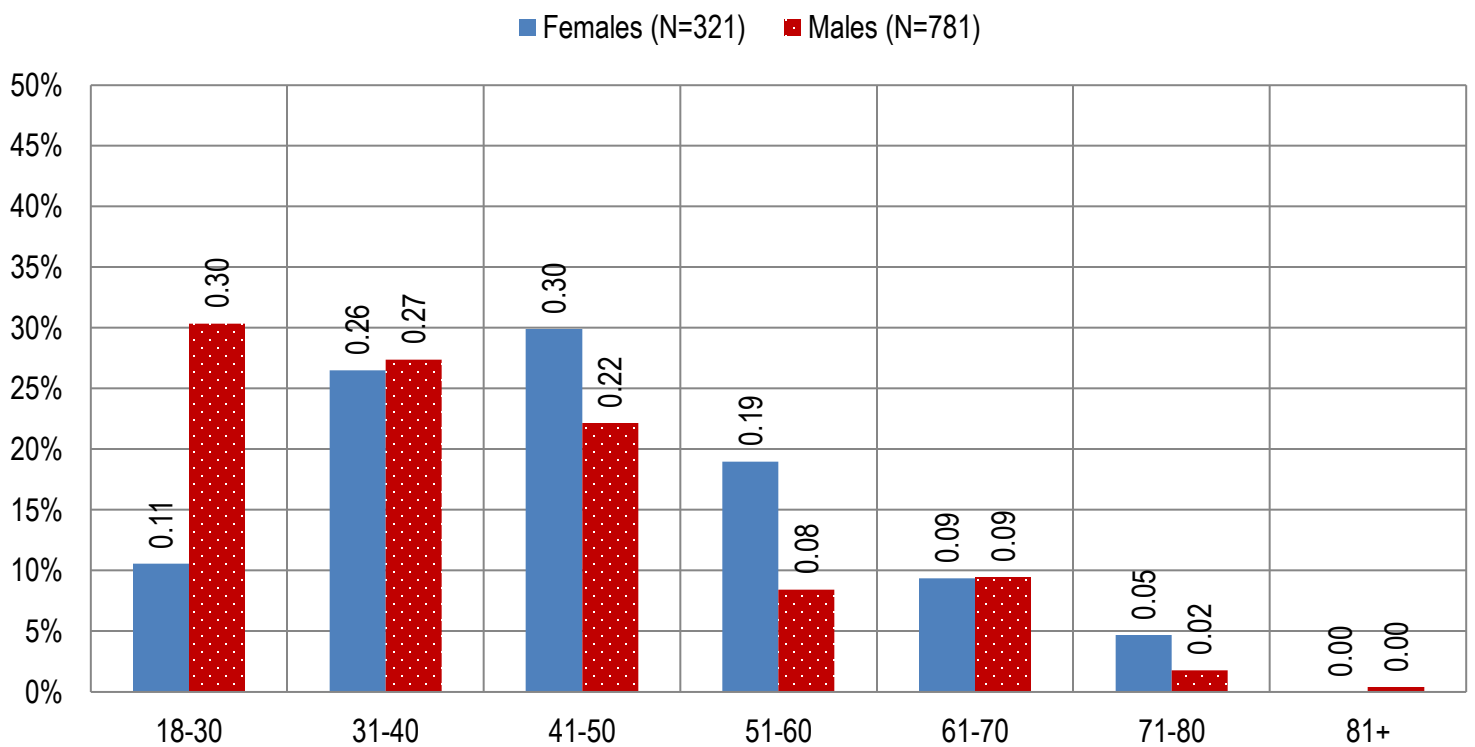


Table 4a. Arizona Medical Marijuana Applications Received- Patient Medical Conditions Profile

Patient medical condition profile of Applications Received [¶]	Totals	Percent Total
Alzheimer's	33	0.03%
Cachexia	75	0.07%
Cancer	2,147	2.04%
Chronic Pain	92,277	87.61%
Crohn's Disease	329	0.31%
Glaucoma	619	0.59%
Hepatitis C	446	0.42%
HIV/AIDS	405	0.38%
Muscle Spasms	476	0.45%
Nausea	449	0.43%
Post-Traumatic Stress Disorder (PTSD)	1,305	1.24%
Sclerosis	21	0.02%
Seizures	735	0.70%
Two Or More Conditions	6,015	5.71%
TOTAL	105,332	100.00%

[¶]Unique debilitating conditions

Table 4b. Arizona Medical Marijuana Licensed Qualifying Patients Medical Conditions Profile

Patient medical condition profile of Applications Approved[¶]	Totals	Percent Total
Alzheimer's	29	0.03%
Cachexia	73	0.07%
Cancer	2,081	2.03%
Chronic Pain	89,725	87.61%
Crohn's Disease	320	0.31%
Glaucoma	605	0.59%
Hepatitis C	438	0.43%
HIV/AIDS	392	0.38%
Muscle Spasms	461	0.45%
Nausea	442	0.43%
Post-Traumatic Stress Disorder (PTSD)	1,272	1.24%
Sclerosis	21	0.02%
Seizures	716	0.70%
Two Or More Conditions	5,844	5.71%
TOTAL	102,419	100.00%

[¶]Unique debilitating conditions

Table 5a. Arizona Medical Marijuana Applications Received for Applicants Seeking Authorization to Cultivate

Applications Received for cardholders with cultivation status	Totals	Percent total
Qualifying patients (n = 105,332)	1,342	1.27%

Table 5b. Arizona Medical Marijuana Licensed Qualifying Patients and Designated Caregivers Authorized for Cultivation

Approved cardholders cultivation status	Totals	Percent total
Qualifying patients (n = 102,419)	1,342	1.31%

Table 7a. Type and Amount of Transactions at Medical Marijuana Dispensaries in 2018 to Date

Type of Transaction [†]	Ounces (oz.)	Pounds
Marijuana	808,171.85	50,510.74
Marijuana Edible	39,826.58	2,489.16
Marijuana Other	36,260.62	2,266.29
Total Marijuana Sold	884,259.06	55266.19

[†]Amounts have been rounded and may not added to exact totals

Figure 5. Transactions and Amount of Marijuana Sold in 2018 by Month

