

## Arizona Medical Marijuana Program November 2018 Monthly Report

In December 2010, Arizona voters passed the Arizona Medical Marijuana Act (AMMA), A.R.S. §36-2801 *et seq.* The AMMA went into effect on April 14, 2011, making Arizona the fourteenth state to adopt a medical marijuana law. The AMMA designates the Arizona Department of Health Services (ADHS) as the licensing and issuing authority for the Arizona Medical Marijuana Program.

The AMMA monthly report highlights the most current program statistics. This includes data on active medical marijuana cardholders as well as transaction data from the sale of medical marijuana at non-profit medical marijuana dispensaries. Tables 1 through 6 and Figures 1 through 3 reflect data that are point in time. Table 7 and Figure 4 are data from the month of November, 2018. The Year-To-Date section which follows shows cumulative applications and approvals for 2018. For further information and statistics, please reference the Arizona Medical Marijuana Annual Report.

**Table 1. Arizona Medical Marijuana Active Qualifying Patients, Designated Caregivers and Dispensary Agents Profile**

Active Cardholder's Profile	Totals	Percent Total
1. Qualifying patients (QPs)	183,789	96.69%
2. Caregivers (CGs)	873	0.46%
3. Dispensary Agents (DA)	5,418	2.85%
<b>Total</b>	<b>190,080</b>	<b>100.00%</b>

\*Note: For caregivers and dispensary agents, these data reflect unique individuals, not the number of cards.

**Table 2. Arizona Medical Marijuana Active Qualifying Patients Profile**

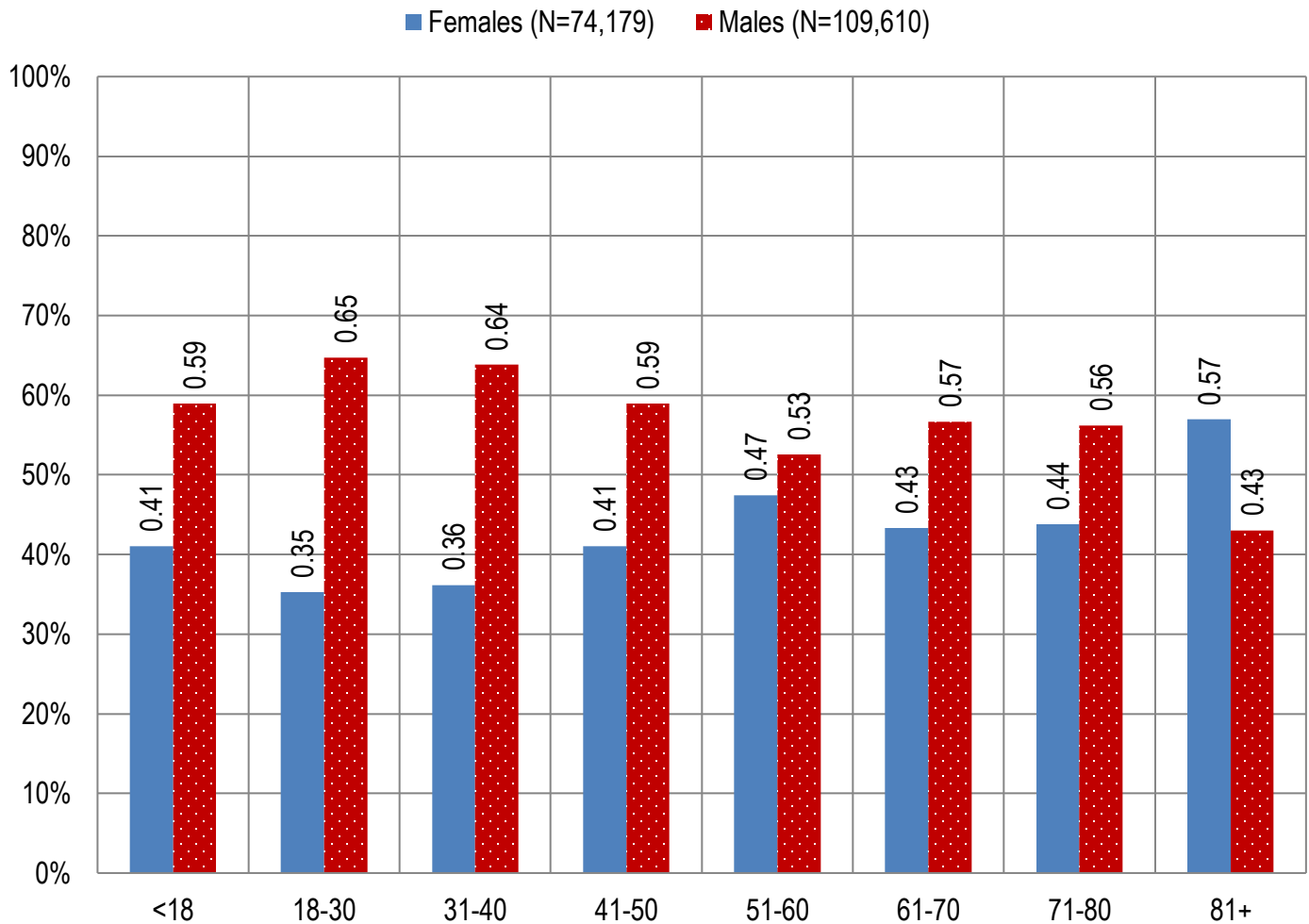
Application profile of qualifying patients	Totals	Percent Total
1. New applications	107,892	58.70%
2. Renewal applications	68,015	37.01%
3. Changed demographics	3,460	1.88%
4. Added Caregivers	191	0.10%
5. Change Dup	4,205	2.29%
6. Replaced Caregivers	23	0.01%
7. Removed Caregivers	3	0.00%
<b>Total</b>	<b>183,789</b>	<b>100.00%</b>

Approximately 11 percent (n = 20,255) of the active cardholders were determined to be SNAP eligible. Of the 20,255 that were determined to be eligible, 10,386 (~51%) were females and 9,869 (~49%) were males.

**Table 3. Arizona Medical Marijuana Active Qualifying Patients Characteristics**

Characteristics of Active Cardholders who are Qualified Patients	Totals (N =183,789)	Percent Total
<b>Patient Age-groups</b>		
Less than 18 years	190	0.10%
18 to 30 years	44,398	24.16%
31 to 40 years	38,323	20.85%
41 to 50 years	28,984	15.77%
51 to 60 years	29,797	16.21%
61 to 70 years	30,056	16.35%
71 to 80 years	10,094	5.49%
81 and older	1,947	1.06%
<b>Patient Gender</b>		
Male	109,610	59.64%
Female	74,179	40.36%

**Figure 1. Arizona Medical Marijuana Active Qualifying Patients Characteristics by Gender and Age (N = 183,789)**

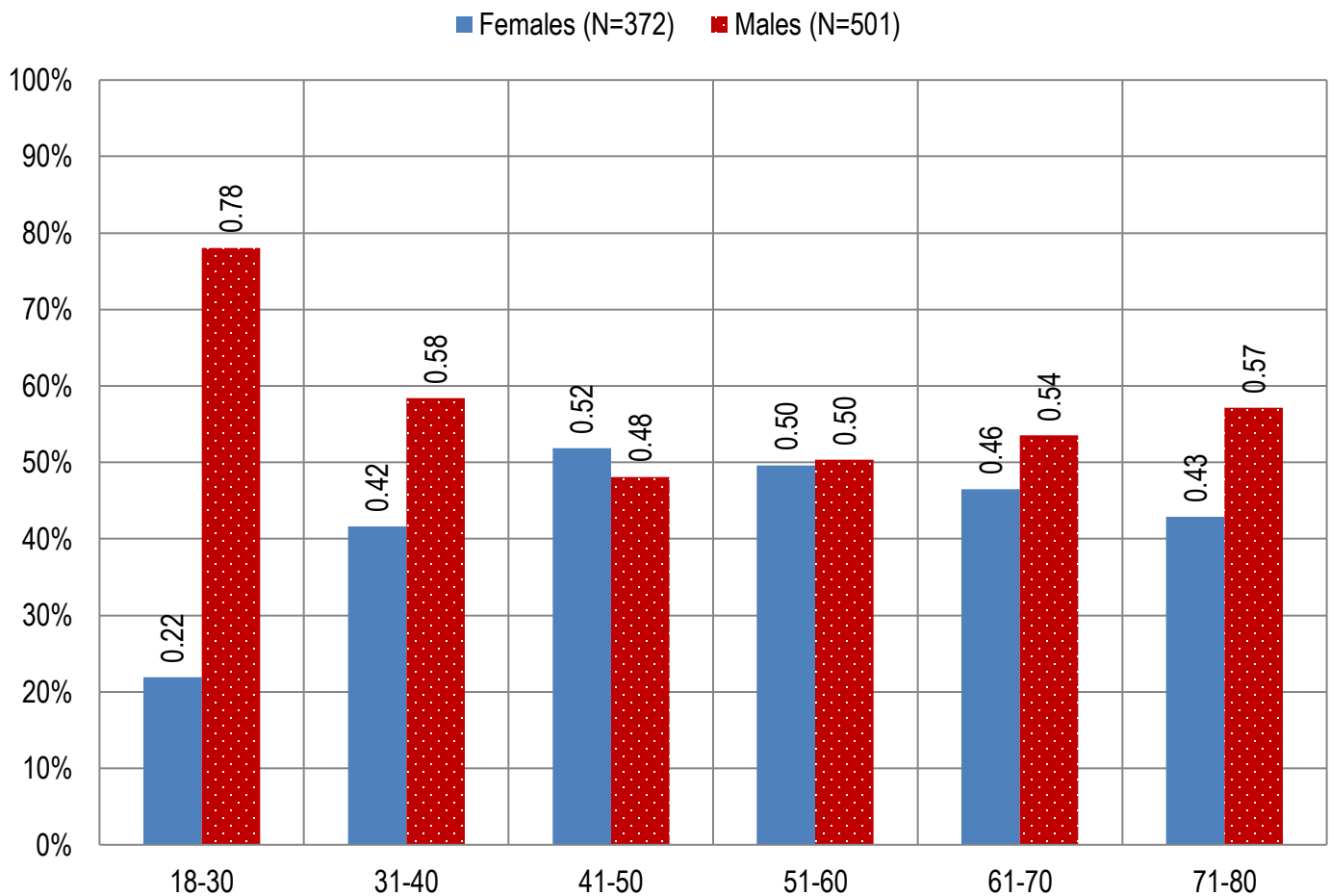


**Table 4. Arizona Medical Marijuana Active Qualifying Patients Medical Condition Profile**

Patient medical condition profile of Active Cardholders <sup>¶</sup>	Totals	Percent Total
Alzheimer's	79	0.04%
Cachexia	132	0.07%
Cancer	4,008	2.18%
Chronic Pain	160,807	87.50%
Crohn's Disease	595	0.32%
Glaucoma	1,105	0.60%
Hepatitis C	738	0.40%
HIV/AIDS	679	0.37%
Muscle Spasms	865	0.47%
Nausea	772	0.42%
Post-Traumatic Stress Disorder (PTSD)	2,291	1.25%
Sclerosis	36	0.02%
Seizures	1,234	0.67%
Two Or More Conditions	10,448	5.68%
<b>TOTAL</b>	<b>183,789</b>	<b>100.00%</b>

<sup>¶</sup>Unique debilitating conditions

**Figure 2. Arizona Medical Marijuana Active Designated Caregiver Characteristics by Gender and Age (N = 873)**



**Table 5. Arizona Medical Marijuana Active Qualifying Patients and Designated Caregivers Authorized for Cultivation**

Active cardholders cultivation status	Totals	Percent Total
Qualifying patients (n =183,789)	2,255	1.23%
Caregivers (n =873)	383	43.87%

**Table 6. Frequency of Qualifying Patients, Caregivers, and Dispensary Agents by County of Residence**

County	Qualifying Patients	Caregivers	Dispensary Agents*
Apache County	844	Count under 20	Count under 20
Cochise County	2,629	20	135
Coconino County	3,736	37	141
Gila County	1,747	Count under 20	34
Graham County	772	Count under 20	Count under 20
Greenlee County	196	Count under 20	Count under 20
La Paz County	346	Count under 20	Count under 20
Maricopa County	118,350	488	3,316
Mohave County	5,082	20	152
Navajo County	2,333	Count under 20	234
Pima County	25,697	153	571
Pinal County	10,714	38	202
Santa Cruz County	526	Count under 20	152
Yavapai County	9,184	51	398
Yuma County	1,633	Count under 20	Count under 20
<b>TOTAL</b>	<b>183,789</b>	<b>873</b>	<b>5,418</b>

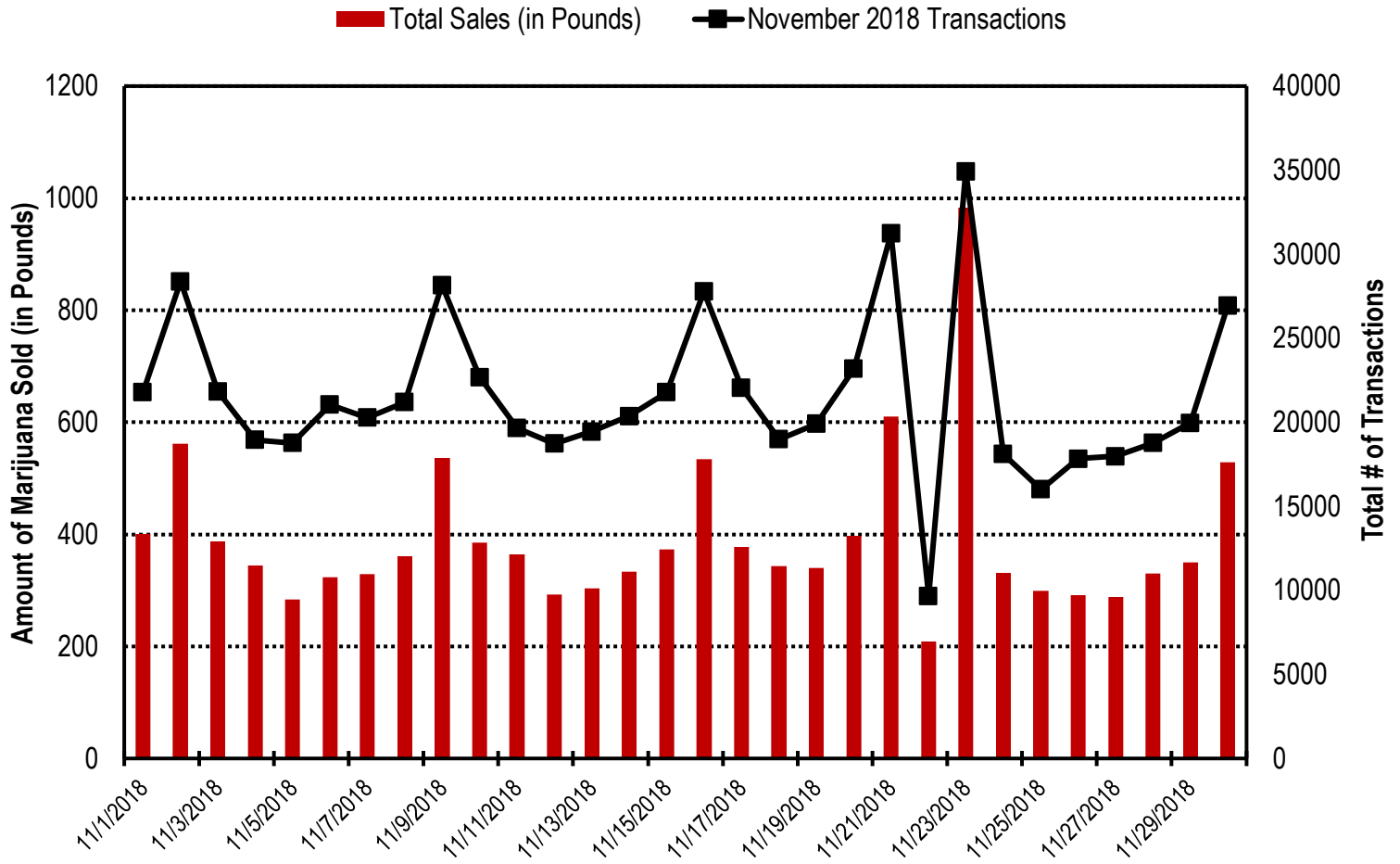
\* 27 Dispensary Agents are located outside of Arizona.

**Table 7. Type and Amount of Transactions at Medical Marijuana Dispensaries in November, 2018**

Type of Transaction <sup>†</sup>	Ounces (oz.)	Pounds
Marijuana	173,788.27	10,861.77
Marijuana Edible	6,873.78	429.61
Marijuana Other	8,071.58	504.47
<b>Total Marijuana Sold</b>	<b>188,733.63</b>	<b>11,795.85</b>

<sup>†</sup>Amounts have been rounded and may not added to exact totals

Figure 4. Daily Transactions and Amount of Marijuana Sold in November, 2018



**YEAR TO DATE**

**Table 1a. Arizona Medical Marijuana Applications Received- Application Profile**

<b>Applications Received Cardholder Profile</b>	<b>Totals</b>	<b>Percent Total</b>
Qualifying patients (QPs)	185,496	95.00%
Caregivers (CGs)	1,981	1.01%
Dispensary Agents (DA)	7,775	3.98%
<b>Total</b>	<b>195,252</b>	<b>100.00%</b>

\*Note: For caregivers and dispensary agents, these data reflect unique individuals, not the number of cards.

**Table 1b. Arizona Medical Marijuana Licensed Qualifying Patients, Designated Caregivers and Dispensary Agents Profile**

<b>Applications Approved Cardholder Profile</b>	<b>Totals</b>	<b>Percent Total</b>
Qualifying patients (QPs)	182,828	95.10%
Caregivers (CGs)	1,909	0.99%
Dispensary Agents (DA)	7,521	3.91%
<b>Total</b>	<b>192,258</b>	<b>100.00%</b>

\*Note: For caregivers and dispensary agents, these data reflect unique individuals, not the number of cards.

**Table 2. Arizona Medical Marijuana Licensed Qualifying Patient Profile**

<b>Applications Received for Qualifying Patients</b>	<b>Totals</b>	<b>Percent Total</b>
New applications	104,778	57.31%
Renewal applications	67,077	36.69%
Changed demographics	4,397	2.40%
Added Caregivers	323	0.18%
Change Dup	6,205	3.39%
Replaced Caregivers	40	0.02%
Removed Caregivers	8	0.00%
<b>Total</b>	<b>182,828</b>	<b>100.00%</b>

**Table 3a. Arizona Medical Marijuana Applications Received- Patient Characteristics**

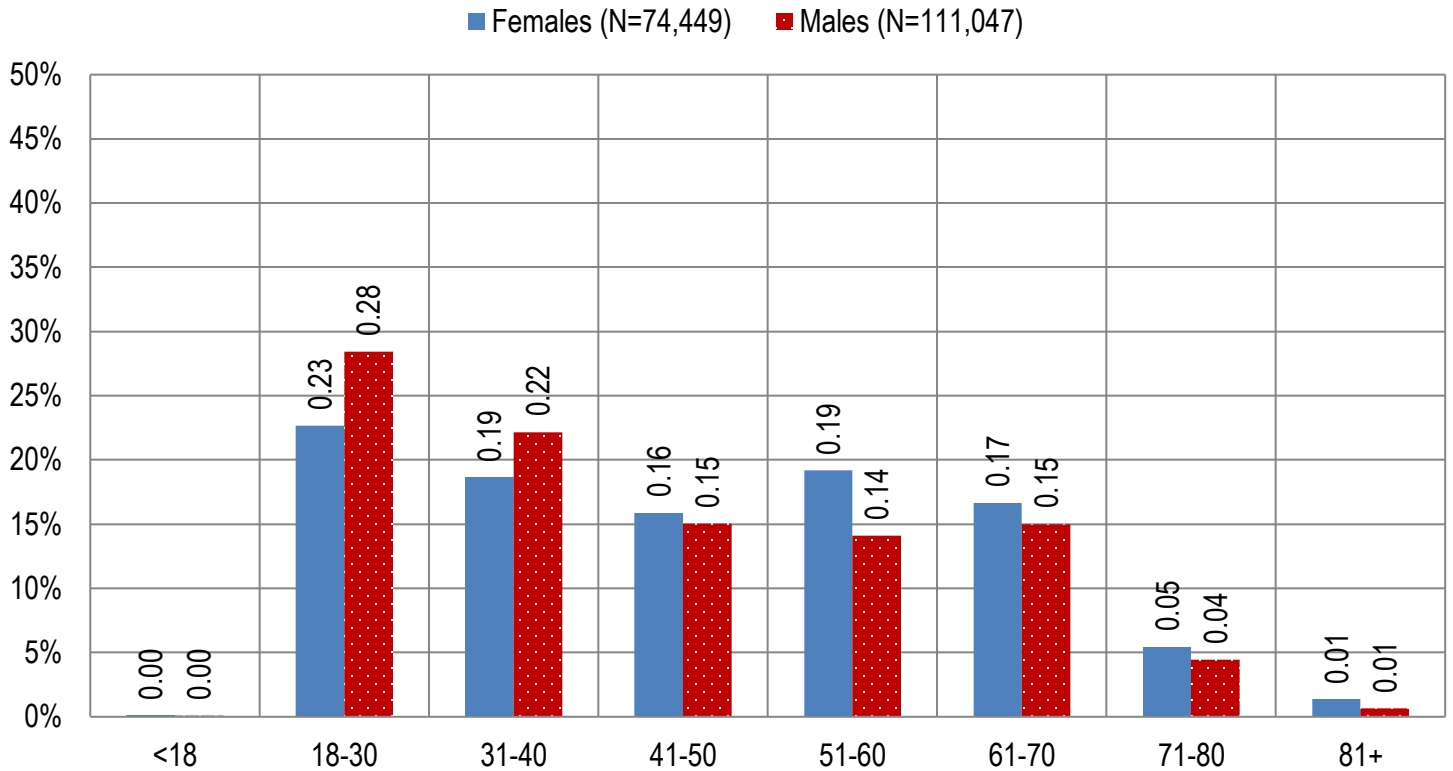
Characteristics of Applications Received who are Qualified Patients	Totals (N = 185,496)	Percent Total
<b>Patient Age-groups</b>		
Less than 18 years	206	0.11%
18 to 30 years	48,470	26.13%
31 to 40 years	38,493	20.75%
41 to 50 years	28,520	15.37%
51 to 60 years	29,970	16.16%
61 to 70 years	29,077	15.68%
71 to 80 years	9,007	4.86%
81 and older	1,753	0.95%
<b>Patient Gender</b>		
Male	111,047	59.86%
Female	74,449	40.14%

**Table 3b. Arizona Medical Marijuana Licensed Qualifying Patient Characteristics**

Characteristics of Approved Applications who are Qualified Patients	Totals (N = 182,828)	Percent Total
<b>Patient Age-groups</b>		
Less than 18 years	195	0.11%
18 to 30 years	47,833	26.16%
31 to 40 years	37,966	20.77%
41 to 50 years	28,104	15.37%
51 to 60 years	29,539	16.16%
61 to 70 years	28,642	15.67%
71 to 80 years	8,833	4.83%
81 and older	1,716	0.94%
<b>Patient Gender</b>		
Male	109,450	59.87%
Female	73,378	40.13%

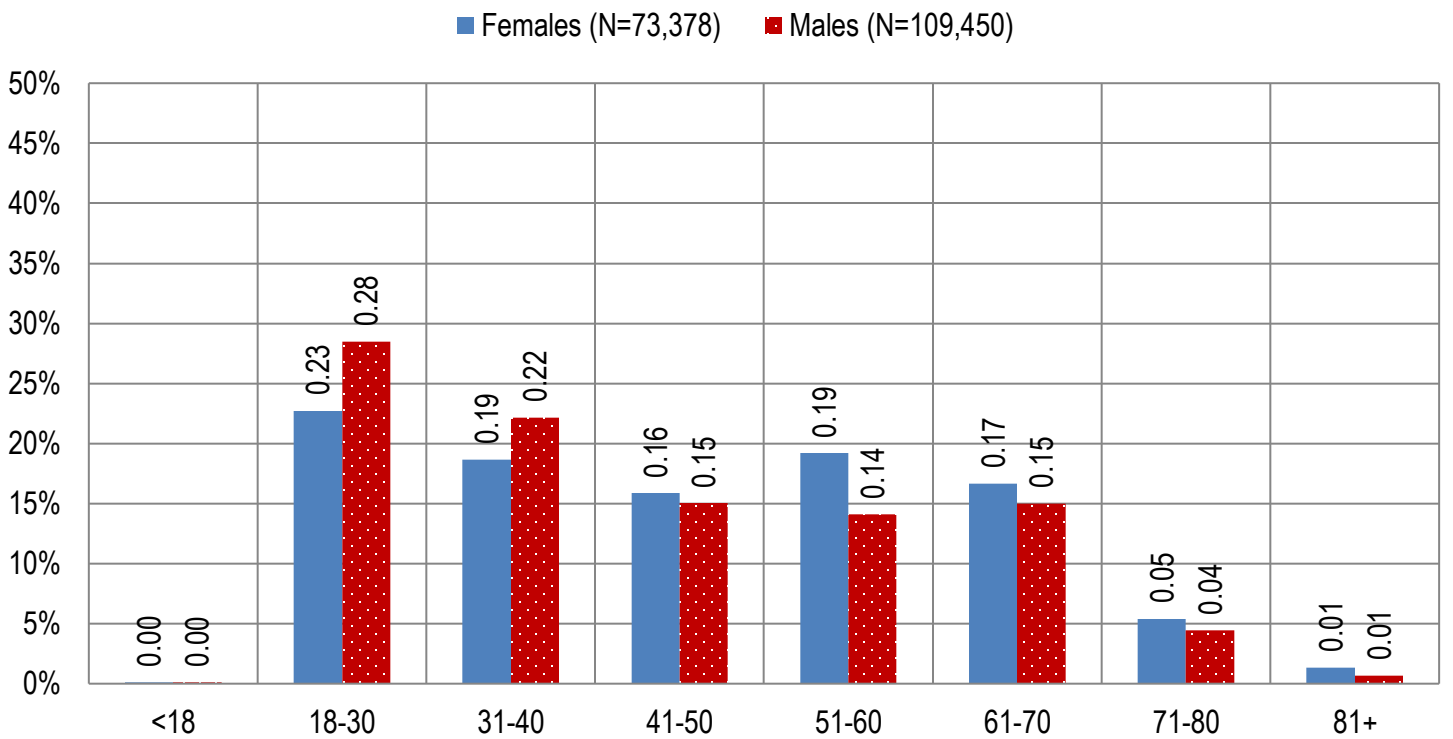
**Figure 1a. Arizona Medical Marijuana Applications Received- Patient Characteristics by Gender and Age**

**(N =185,496)**



**Figure 1b. Arizona Medical Marijuana Licensed Qualifying Patient Characteristics by Gender and Age**

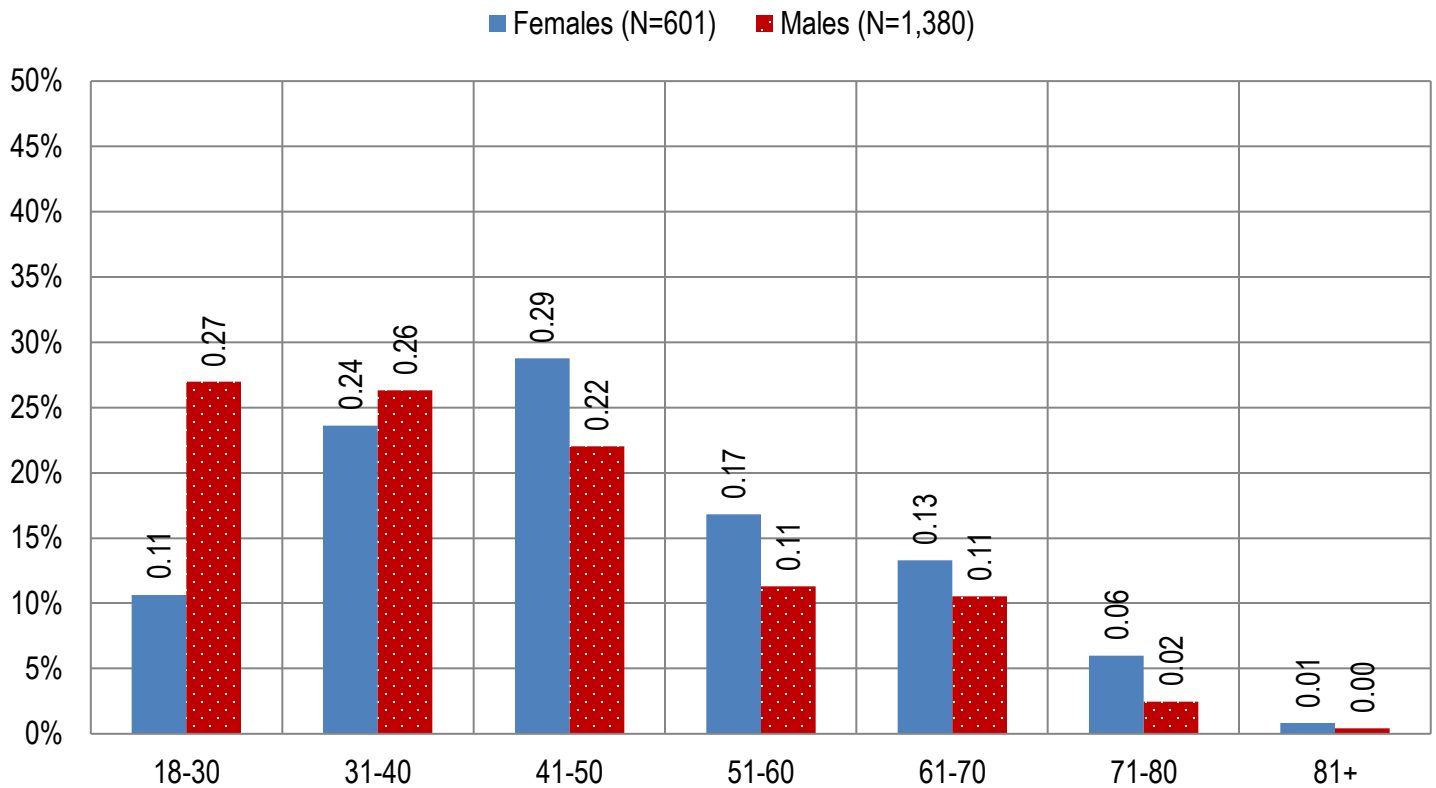
**(N =182,828)**





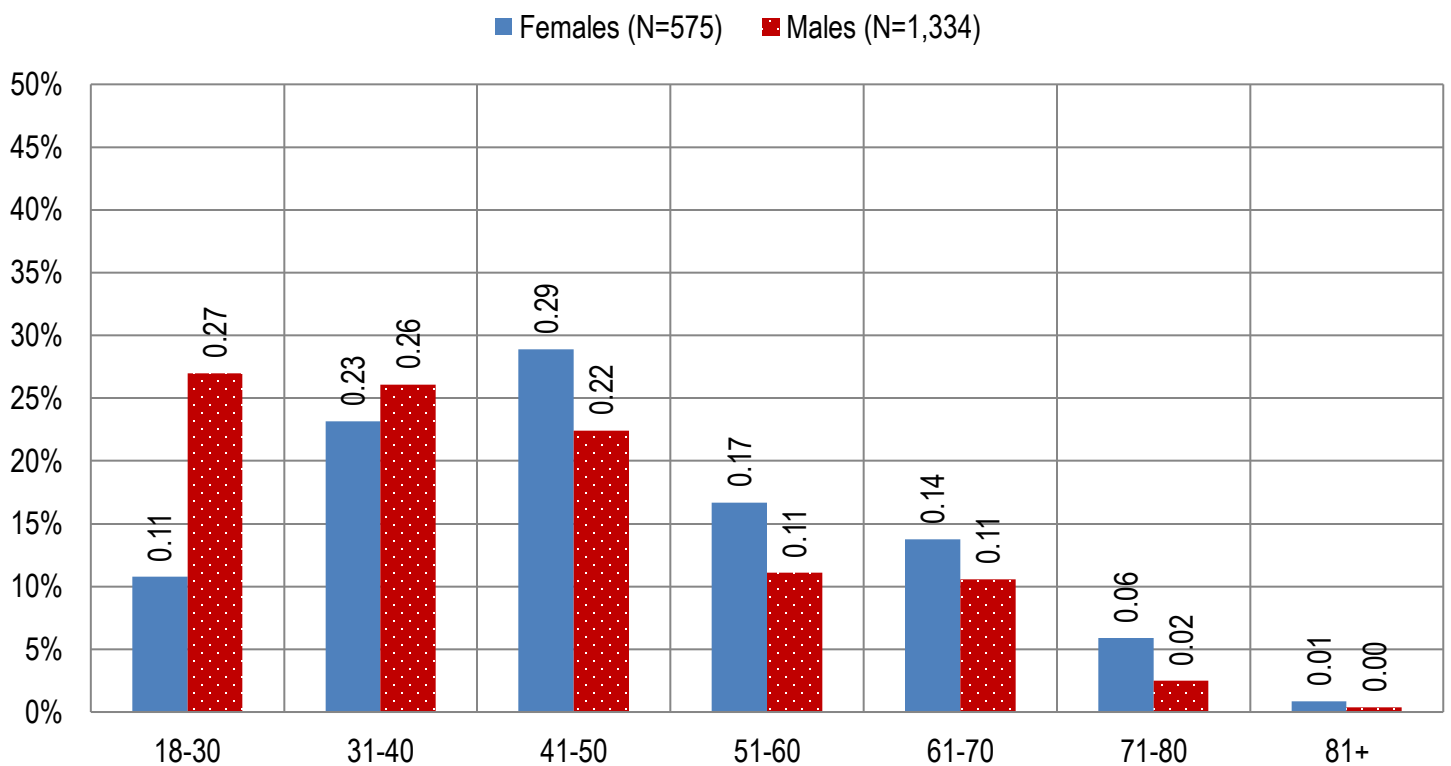
**Figure 2a. Arizona Medical Marijuana Applications Received- Caregivers Characteristics by Gender and Age**

**(N = 1,981)**



**Figure 2b. Arizona Medical Marijuana Licensed Caregivers Characteristics by Gender and Age**

**(N = 1,909)**



**Table 4a. Arizona Medical Marijuana Applications Received- Patient Medical Conditions Profile**

<b>Patient medical condition profile of Applications Received <sup>¶</sup></b>	<b>Totals</b>	<b>Percent Total</b>
Alzheimer's	86	0.05%
Cachexia	130	0.07%
Cancer	3,932	2.12%
Chronic Pain	162,509	87.61%
Crohn's Disease	585	0.32%
Glaucoma	1,066	0.57%
Hepatitis C	766	0.41%
HIV/AIDS	694	0.37%
Muscle Spasms	863	0.47%
Nausea	780	0.42%
Post-Traumatic Stress Disorder (PTSD)	2,317	1.25%
Sclerosis	33	0.02%
Seizures	1,264	0.68%
Two Or More Conditions	10,471	5.64%
<b>TOTAL</b>	<b>185,496</b>	<b>100.00%</b>

<sup>¶</sup>Unique debilitating conditions

**Table 4b. Arizona Medical Marijuana Licensed Qualifying Patients Medical Conditions Profile**

<b>Patient medical condition profile of Applications Approved<sup>¶</sup></b>	<b>Totals</b>	<b>Percent Total</b>
Alzheimer's	81	0.04%
Cachexia	127	0.07%
Cancer	3,859	2.11%
Chronic Pain	160,238	87.64%
Crohn's Disease	581	0.32%
Glaucoma	1,051	0.57%
Hepatitis C	755	0.41%
HIV/AIDS	678	0.37%
Muscle Spasms	846	0.46%
Nausea	764	0.42%
Post-Traumatic Stress Disorder (PTSD)	2,281	1.25%
Sclerosis	33	0.02%
Seizures	1,237	0.68%
Two Or More Conditions	10,297	5.63%
<b>TOTAL</b>	<b>182,828</b>	<b>100.00%</b>

<sup>¶</sup>Unique debilitating conditions

**Table 5a. Arizona Medical Marijuana Applications Received for Applicants Seeking Authorization to Cultivate**

Applications Received for cardholders with cultivation status	Totals	Percent total
Qualifying patients (n = 185,496)	2,430	1.31%

**Table 5b. Arizona Medical Marijuana Licensed Qualifying Patients and Designated Caregivers Authorized for Cultivation**

Approved cardholders cultivation status	Totals	Percent total
Qualifying patients (n = 182,828)	2,430	1.33%

**Table 7a. Type and Amount of Transactions at Medical Marijuana Dispensaries in 2018 to Date**

Type of Transaction <sup>†</sup>	Ounces (oz.)	Pounds
Marijuana	1,609,924.41	100,620.28
Marijuana Edible	72,115.35	4,507.21
Marijuana Other	72,821.05	4,551.32
<b>Total Marijuana Sold</b>	<b>1,754,860.81</b>	<b>109,678.80</b>

<sup>†</sup>Amounts have been rounded and may not added to exact totals

**Figure 5. Transactions and Amount of Marijuana Sold in 2018 by Month**

