

Arizona Medical Marijuana Program April 2019 Monthly Report

In December 2010, Arizona voters passed the Arizona Medical Marijuana Act (AMMA), A.R.S. §36-2801 *et seq.* The AMMA went into effect on April 14, 2011, making Arizona the fourteenth state to adopt a medical marijuana law. The AMMA designates the Arizona Department of Health Services (ADHS) as the licensing and issuing authority for the Arizona Medical Marijuana Program.

The AMMA monthly report highlights the most current program statistics. This includes data on active medical marijuana cardholders as well as transaction data from the sale of medical marijuana at non-profit medical marijuana dispensaries. Tables 1 through 6 and Figures 1 through 3 reflect data that are point-in-time. Table 7 and Figure 4 are data from the month of April, 2019. The Year-To-Date section which follows shows cumulative applications and approvals for 2019. For further information and statistics, please reference the Arizona Medical Marijuana Annual Report.

Table 1. Arizona Medical Marijuana Active Qualifying Patients, Designated Caregivers and Dispensary Agents Profile

Active Cardholder's Profile	Totals	Percent Total
1. Qualifying patients (QPs)	197,025	96.73%
2. Caregivers (CGs)	783	0.38%
3. Dispensary Agents (DA)	5,875	2.88%
Total	203,683	100.00%

*Note: For caregivers and dispensary agents, these data reflect unique individuals, not the number of cards.

Table 2. Arizona Medical Marijuana Active Qualifying Patients Profile

Application profile of qualifying patients	Totals	Percent Total
1. New applications	113,277	57.49%
2. Renewal applications	76,040	38.59%
3. Changed demographics	3,164	1.61%
4. Added Caregivers	185	0.09%
5. Change Dup	4,332	2.20%
6. Replaced Caregivers	25	0.01%
7. Removed Caregivers	2	0.00%
Total	197,025	100.00%

Approximately 11 percent (n = 21,923) of the active cardholders were determined to be SNAP eligible. Of the 21,923 that were determined to be eligible, 11,296 (~51%) were females and 10,627 (~49%) were males.

Table 3. Arizona Medical Marijuana Active Qualifying Patients Characteristics

Characteristics of Active Cardholders who are Qualified Patients	Totals (N =197,025)	Percent Total
Patient Age-groups		
Less than 18 years	188	0.10%
18 to 30 years	47,826	24.27%
31 to 40 years	41,281	20.95%
41 to 50 years	31,228	15.85%
51 to 60 years	31,318	15.90%
61 to 70 years	32,083	16.28%
71 to 80 years	11,033	5.60%
81 and older	2,068	1.05%
Patient Gender		
Male	116,985	59.38%
Female	80,040	40.62%

Figure 1. Arizona Medical Marijuana Active Qualifying Patients Characteristics by Gender and Age (N = 197,025)

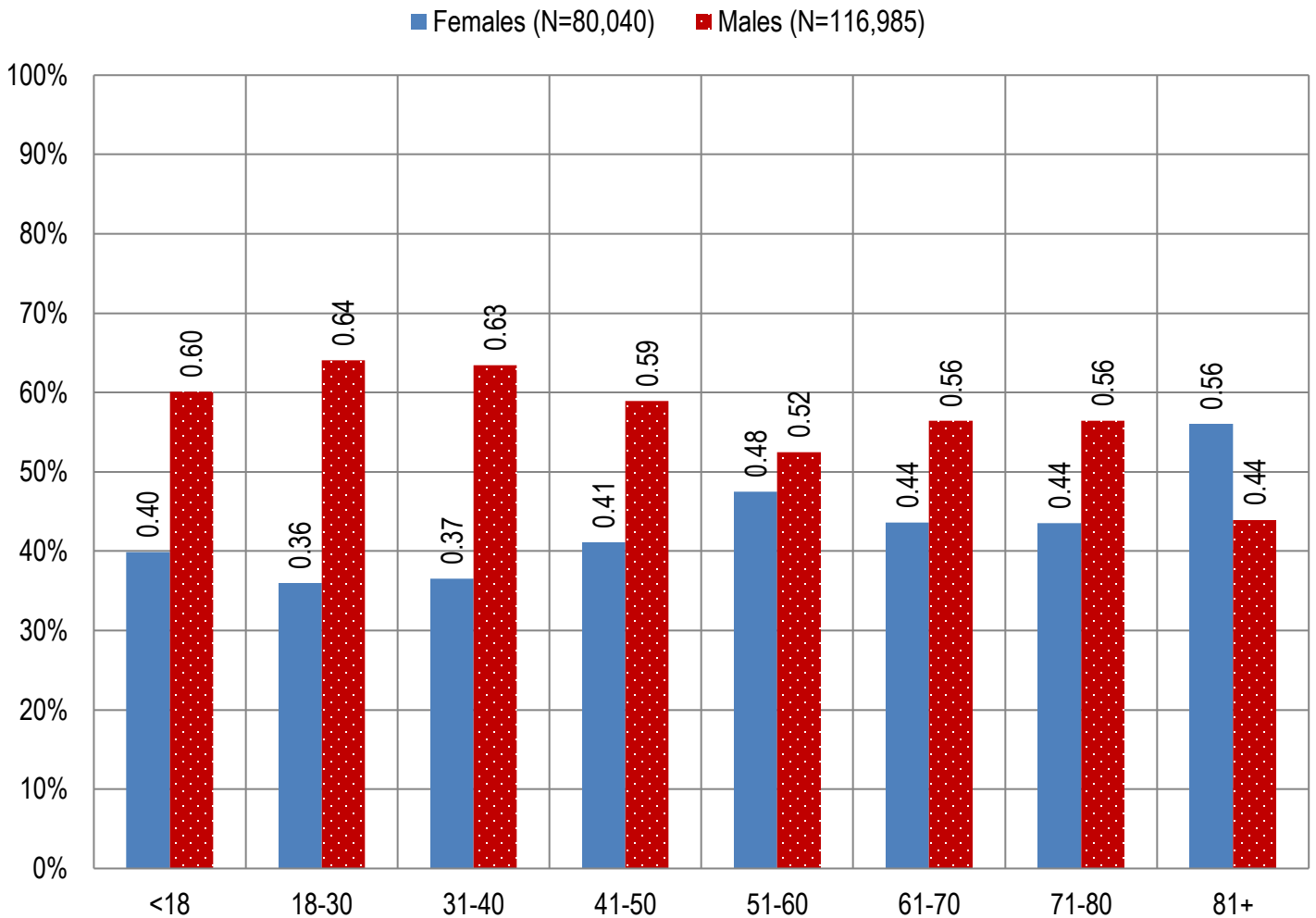


Table 4. Arizona Medical Marijuana Active Qualifying Patients Medical Condition Profile

Patient medical condition profile of Active Cardholders [¶]	Totals	Percent Total
Alzheimer's	100	0.05%
Cachexia	122	0.06%
Cancer	4,094	2.08%
Chronic Pain	173,657	88.14%
Crohn's Disease	650	0.33%
Glaucoma	1,113	0.56%
Hepatitis C	736	0.37%
HIV/AIDS	690	0.35%
Muscle Spasms	911	0.46%
Nausea	793	0.40%
Post-Traumatic Stress Disorder (PTSD)	2,402	1.22%
Sclerosis	31	0.02%
Seizures	1,207	0.61%
Two Or More Conditions	10,519	5.34%
TOTAL	197,025	100.00%

[¶]Unique debilitating conditions

Figure 2. Arizona Medical Marijuana Active Designated Caregiver Characteristics by Gender and Age (N = 783)

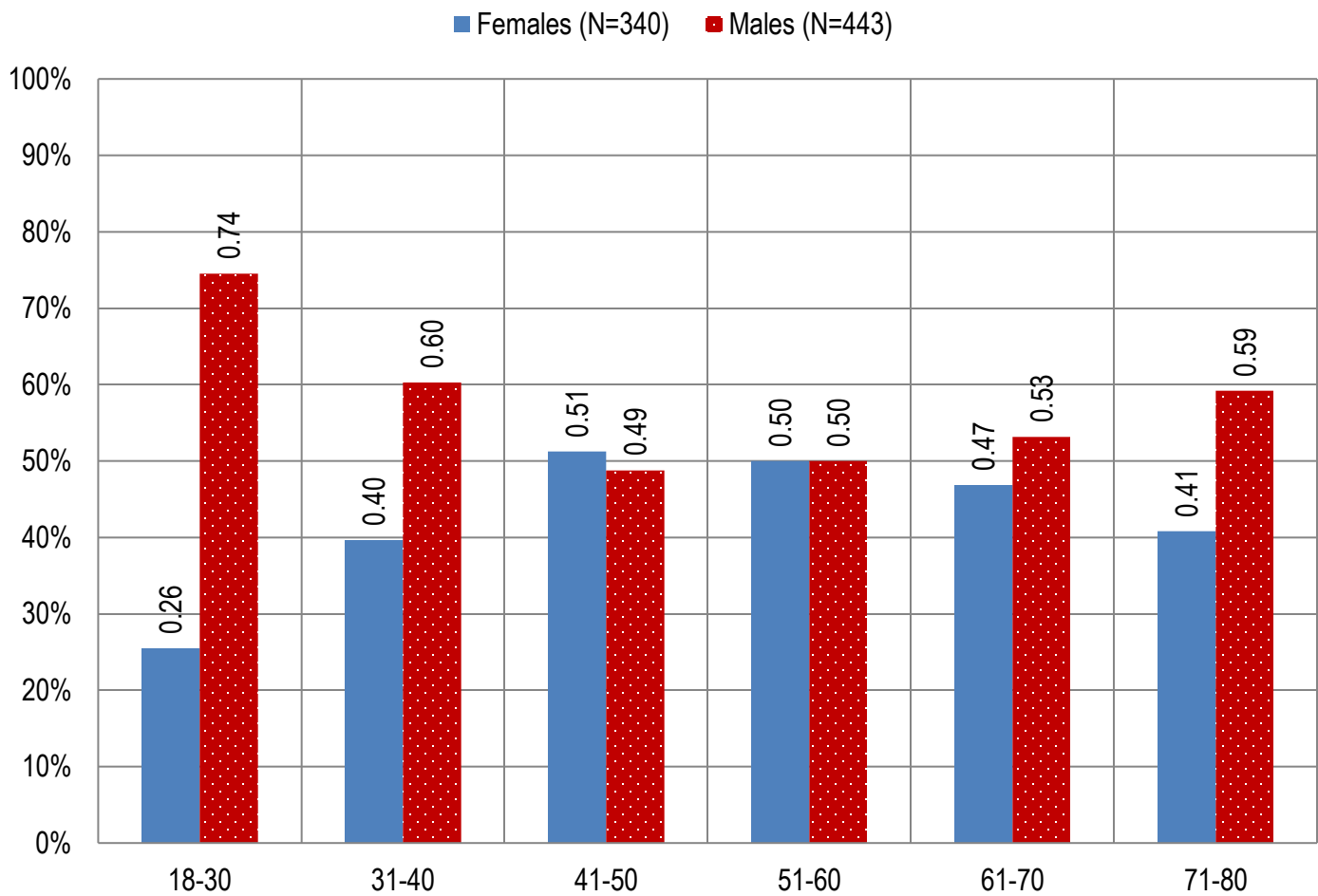


Table 5. Arizona Medical Marijuana Active Qualifying Patients and Designated Caregivers Authorized for Cultivation

Active cardholders cultivation status	Totals	Percent Total
Qualifying patients (n =197,025)	2,349	1.19%
Caregivers (n =783)	310	39.59%

Table 6. Frequency of Qualifying Patients, Caregivers, and Dispensary Agents by County of Residence

County	Qualifying Patients	Caregivers	Dispensary Agents*
Apache County	855	Count under 20	Count under 20
Cochise County	2,890	Count under 20	172
Coconino County	3,936	31	152
Gila County	1,824	Count under 20	35
Graham County	802	Count under 20	Count under 20
Greenlee County	200	Count under 20	Count under 20
La Paz County	338	Count under 20	Count under 20
Maricopa County	127,670	445	3,608
Mohave County	5,078	20	176
Navajo County	2,370	Count under 20	244
Pima County	27,164	134	627
Pinal County	11,844	36	214
Santa Cruz County	590	Count under 20	158
Yavapai County	9,797	51	381
Yuma County	1,667	Count under 20	Count under 20
TOTAL	197,025	783	5,875

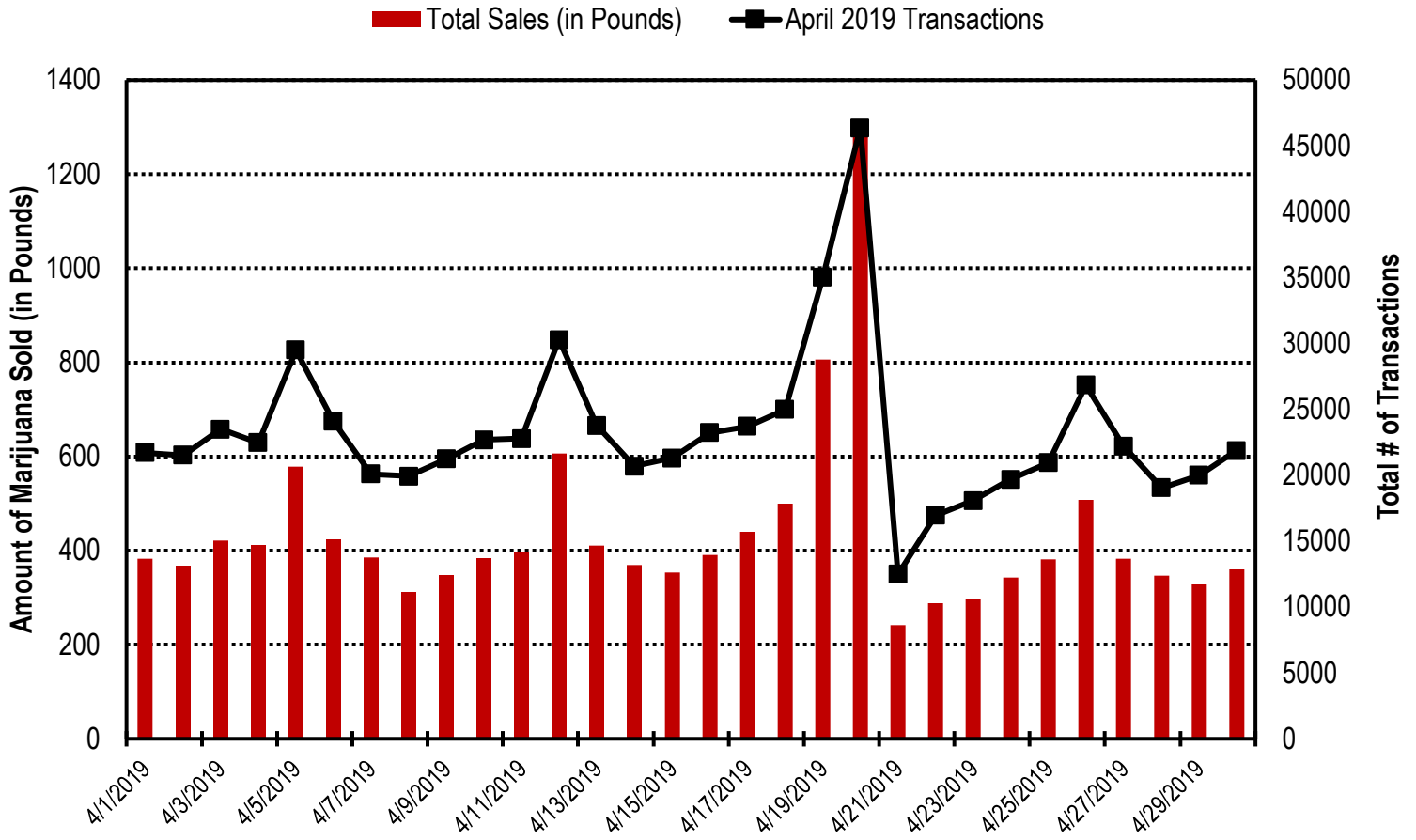
* 49 Dispensary Agents are located outside of Arizona.

Table 7. Type and Amount of Transactions at Medical Marijuana Dispensaries in April, 2019

Type of Transaction [†]	Ounces (oz.)	Pounds
Marijuana	189,276.72	11,829.80
Marijuana Edible	8,770.27	548.14
Marijuana Other	11,224.35	701.52
Total Marijuana Sold	209,271.35	13,079.46

[†]Amounts have been rounded and may not added to exact totals

Figure 4. Daily Transactions and Amount of Marijuana Sold in April, 2019



YEAR TO DATE

Table 1a. Arizona Medical Marijuana Applications Received- Application Profile

Applications Received Cardholder Profile	Totals	Percent Total
Qualifying patients (QPs)	83,102	95.47%
Caregivers (CGs)	582	0.67%
Dispensary Agents (DA)	3,360	3.86%
Total	87,044	100.00%

*Note: For caregivers and dispensary agents, these data reflect unique individuals, not the number of cards.

Table 1b. Arizona Medical Marijuana Licensed Qualifying Patients, Designated Caregivers and Dispensary Agents Profile

Applications Approved Cardholder Profile	Totals	Percent Total
Qualifying patients (QPs)	78,683	95.62%
Caregivers (CGs)	496	0.60%
Dispensary Agents (DA)	3,107	3.78%
Total	82,286	100.00%

*Note: For caregivers and dispensary agents, these data reflect unique individuals, not the number of cards.

Table 2. Arizona Medical Marijuana Licensed Qualifying Patient Profile

Applications Received for Qualifying Patients	Totals	Percent Total
New applications	43,593	55.40%
Renewal applications	31,064	39.48%
Changed demographics	1,560	1.98%
Added Caregivers	79	0.10%
Change Dup	2,373	3.02%
Replaced Caregivers	11	0.01%
Removed Caregivers	3	0.00%
Total	78,683	100.00%

Table 3a. Arizona Medical Marijuana Applications Received- Patient Characteristics

Characteristics of Applications Received who are Qualified Patients	Totals (N = 83,102)	Percent Total
Patient Age-groups		
Less than 18 years	76	0.09%
18 to 30 years	23,057	27.75%
31 to 40 years	18,218	21.92%
41 to 50 years	12,828	15.44%
51 to 60 years	12,333	14.84%
61 to 70 years	12,031	14.48%
71 to 80 years	3,893	4.68%
81 and older	666	0.80%
Patient Gender		
Male	49,386	59.43%
Female	33,716	40.57%

Table 3b. Arizona Medical Marijuana Licensed Qualifying Patient Characteristics

Characteristics of Approved Applications who are Qualified Patients	Totals (N = 78,683)	Percent Total
Patient Age-groups		
Less than 18 years	59	0.07%
18 to 30 years	21,833	27.75%
31 to 40 years	17,306	21.99%
41 to 50 years	12,154	15.45%
51 to 60 years	11,671	14.83%
61 to 70 years	11,379	14.46%
71 to 80 years	3,655	4.65%
81 and older	626	0.80%
Patient Gender		
Male	46,817	59.50%
Female	31,866	40.50%

Figure 1a. Arizona Medical Marijuana Applications Received- Patient Characteristics by Gender and Age

(N =83,102)

■ Females (N=33,716) ■ Males (N=49,386)

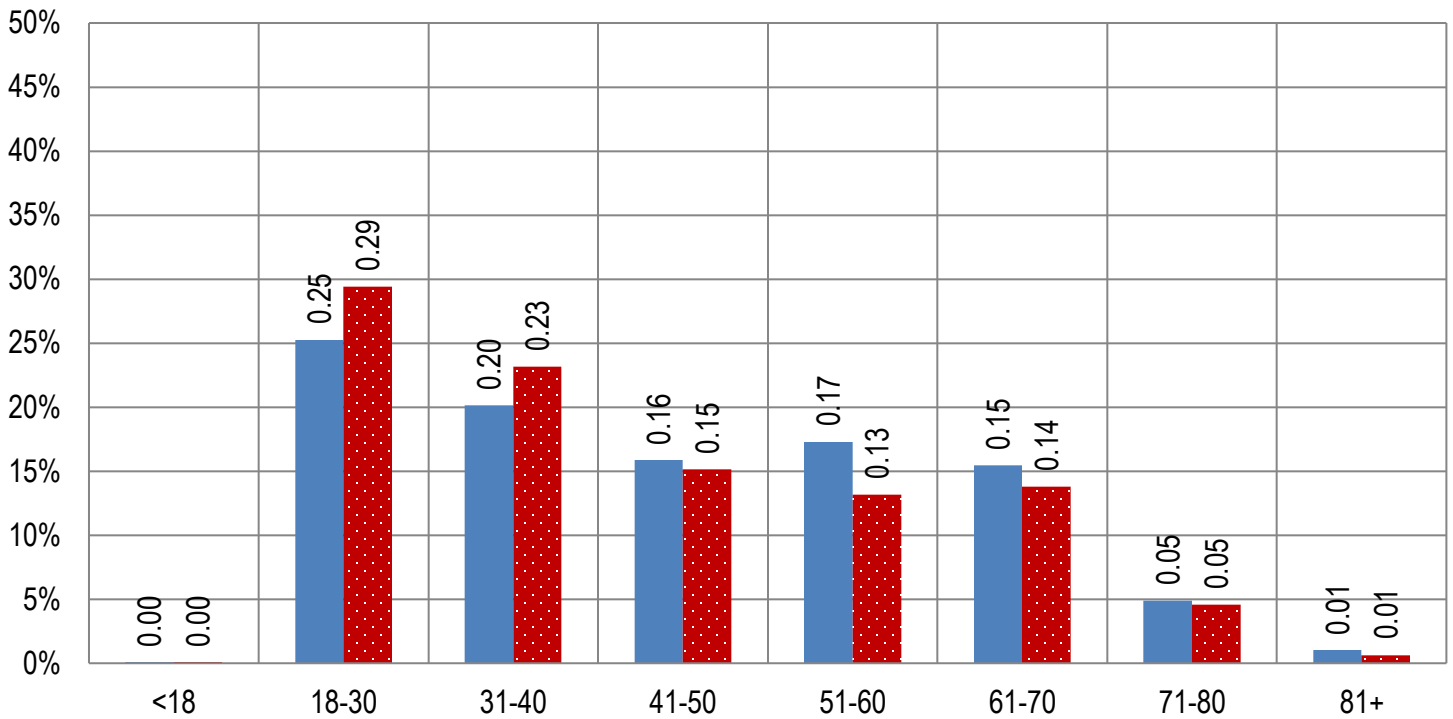


Figure 1b. Arizona Medical Marijuana Licensed Qualifying Patient Characteristics by Gender and Age

(N =78,683)

■ Females (N=31,866) ■ Males (N=46,817)

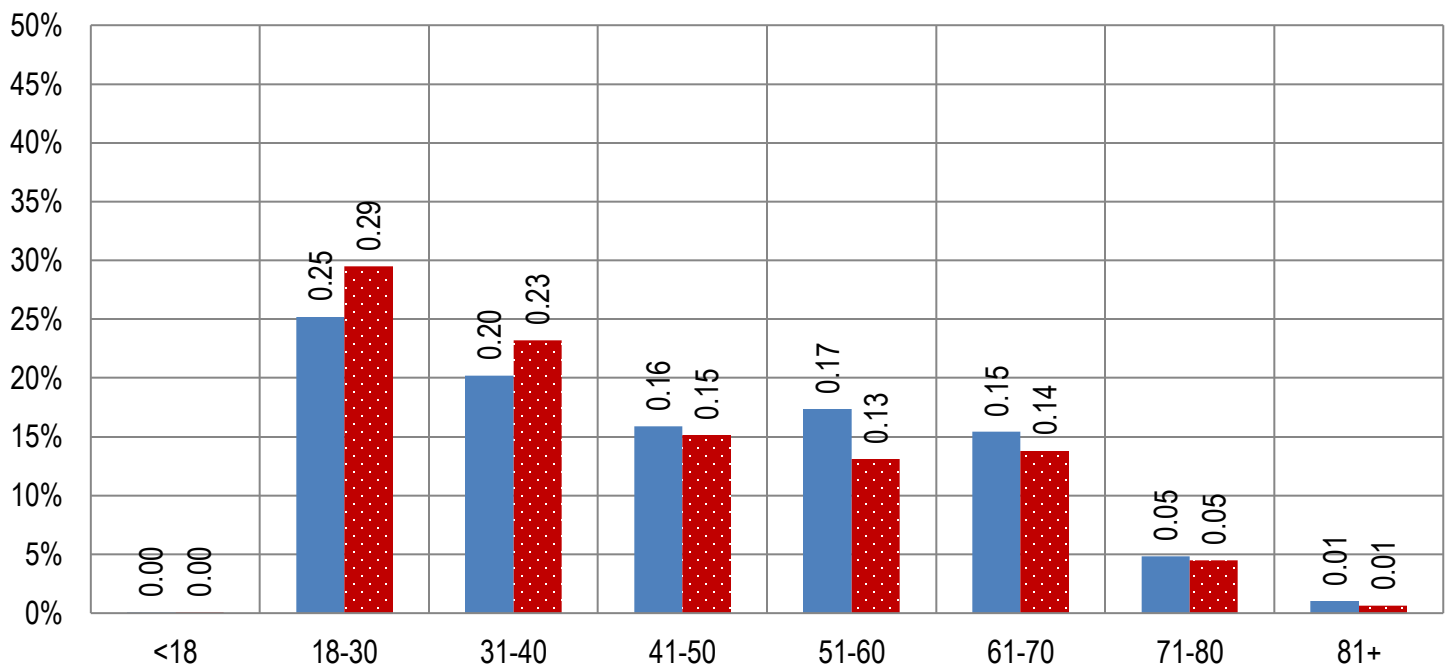


Figure 2a. Arizona Medical Marijuana Applications Received- Caregivers Characteristics by Gender and Age (N = 582)

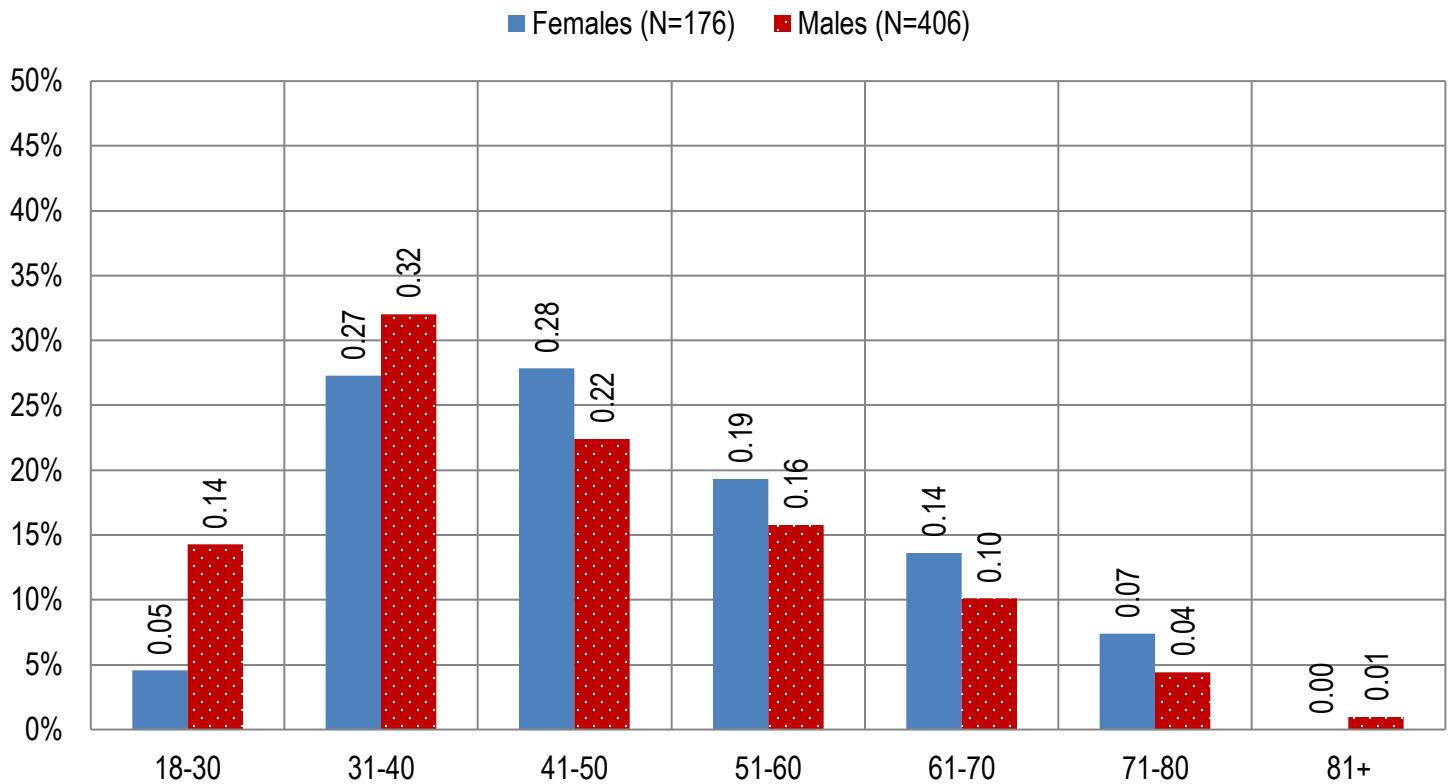


Figure 2b. Arizona Medical Marijuana Licensed Caregivers Characteristics by Gender and Age (N = 496)

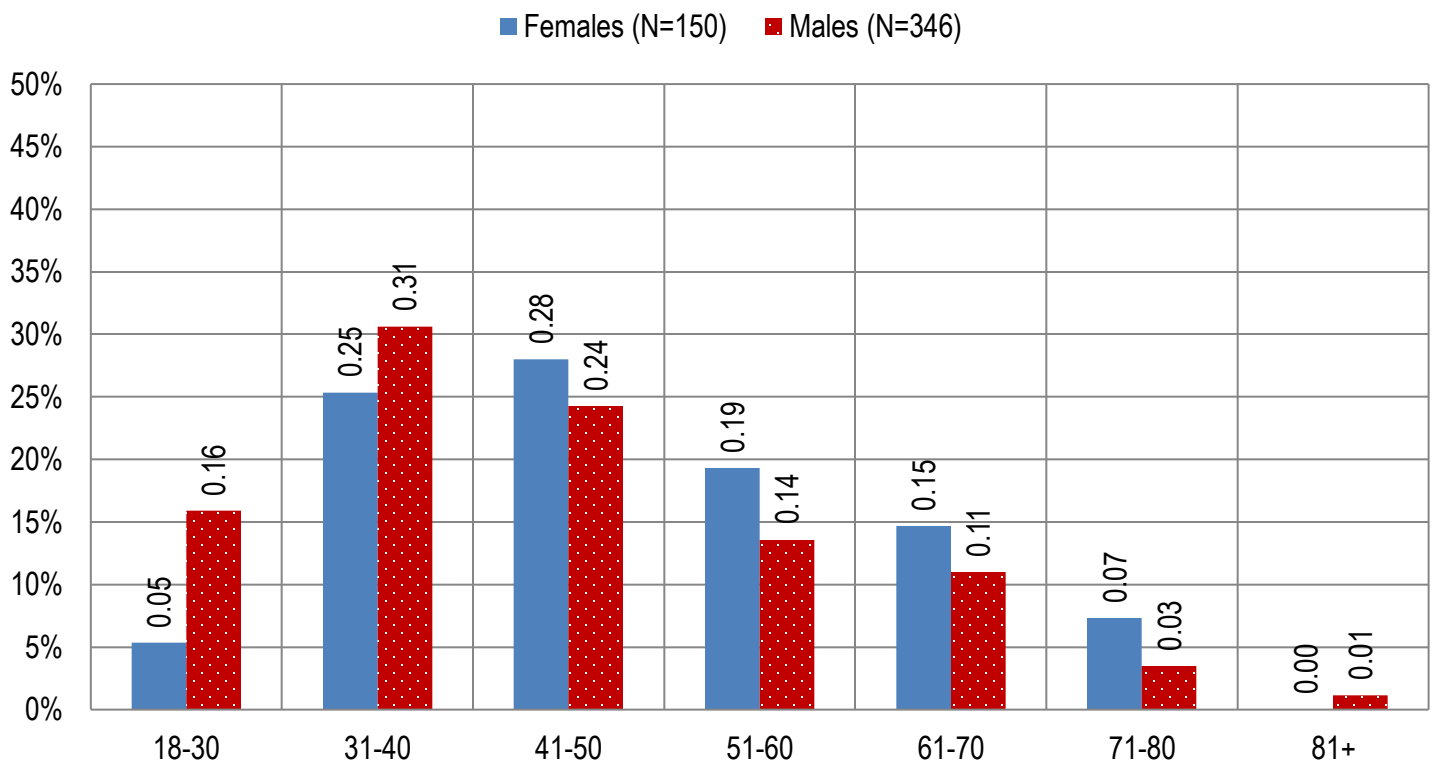


Table 4a. Arizona Medical Marijuana Applications Received- Patient Medical Conditions Profile

Patient medical condition profile of Applications Received [¶]	Totals	Percent Total
Alzheimer's	44	0.05%
Cachexia	41	0.05%
Cancer	1,486	1.79%
Chronic Pain	74,149	89.23%
Crohn's Disease	255	0.31%
Glaucoma	408	0.49%
Hepatitis C	308	0.37%
HIV/AIDS	282	0.34%
Muscle Spasms	367	0.44%
Nausea	309	0.37%
Post-Traumatic Stress Disorder (PTSD)	1,005	1.21%
Sclerosis	12	0.01%
Seizures	482	0.58%
Two Or More Conditions	3,954	4.76%
TOTAL	83,102	100.00%

[¶]Unique debilitating conditions

Table 4b. Arizona Medical Marijuana Licensed Qualifying Patients Medical Conditions Profile

Patient medical condition profile of Applications Approved [¶]	Totals	Percent Total
Alzheimer's	43	0.05%
Cachexia	35	0.04%
Cancer	1,394	1.77%
Chronic Pain	70,273	89.31%
Crohn's Disease	244	0.31%
Glaucoma	385	0.49%
Hepatitis C	294	0.37%
HIV/AIDS	265	0.34%
Muscle Spasms	339	0.43%
Nausea	295	0.37%
Post-Traumatic Stress Disorder (PTSD)	954	1.21%
Sclerosis	9	0.01%
Seizures	458	0.58%
Two Or More Conditions	3,695	4.70%
TOTAL	78,683	100.00%

[¶]Unique debilitating conditions

Table 5a. Arizona Medical Marijuana Applications Received for Applicants Seeking Authorization to Cultivate

Applications Received for cardholders with cultivation status	Totals	Percent total
Qualifying patients (n = 83,102)	825	0.99%

Table 5b. Arizona Medical Marijuana Licensed Qualifying Patients and Designated Caregivers Authorized for Cultivation

Approved cardholders cultivation status	Totals	Percent total
Qualifying patients (n = 78,683)	825	1.05%

Table 7a. Type and Amount of Transactions at Medical Marijuana Dispensaries in 2019 to Date

Type of Transaction [†]	Ounces (oz.)	Pounds
Marijuana	716,855.22	44,803.45
Marijuana Edible	32,345.43	2,021.59
Marijuana Other	40,587.34	2,536.71
Total Marijuana Sold	789,787.98	49,361.75

[†]Amounts have been rounded and may not added to exact totals

Figure 5. Transactions and Amount of Marijuana Sold in 2019 by Month

