

## Arizona Medical Marijuana Program January 2019 Monthly Report

In December 2010, Arizona voters passed the Arizona Medical Marijuana Act (AMMA), A.R.S. §36-2801 *et seq.* The AMMA went into effect on April 14, 2011, making Arizona the fourteenth state to adopt a medical marijuana law. The AMMA designates the Arizona Department of Health Services (ADHS) as the licensing and issuing authority for the Arizona Medical Marijuana Program.

The AMMA monthly report highlights the most current program statistics. This includes data on active medical marijuana cardholders as well as transaction data from the sale of medical marijuana at non-profit medical marijuana dispensaries. Tables 1 through 6 and Figures 1 through 3 reflect data that are point in time. Table 7 and Figure 4 are data from the month of January, 2019. The Year-To-Date section which follows shows cumulative applications and approvals for 2019. For further information and statistics, please reference the Arizona Medical Marijuana Annual Report.

**Table 1. Arizona Medical Marijuana Active Qualifying Patients, Designated Caregivers and Dispensary Agents Profile**

Active Cardholder's Profile	Totals	Percent Total
1. Qualifying patients (QPs)	188,935	96.73%
2. Caregivers (CGs)	825	0.42%
3. Dispensary Agents (DA)	5,566	2.85%
<b>Total</b>	<b>195,326</b>	<b>100.00%</b>

\*Note: For caregivers and dispensary agents, these data reflect unique individuals, not the number of cards.

**Table 2. Arizona Medical Marijuana Active Qualifying Patients Profile**

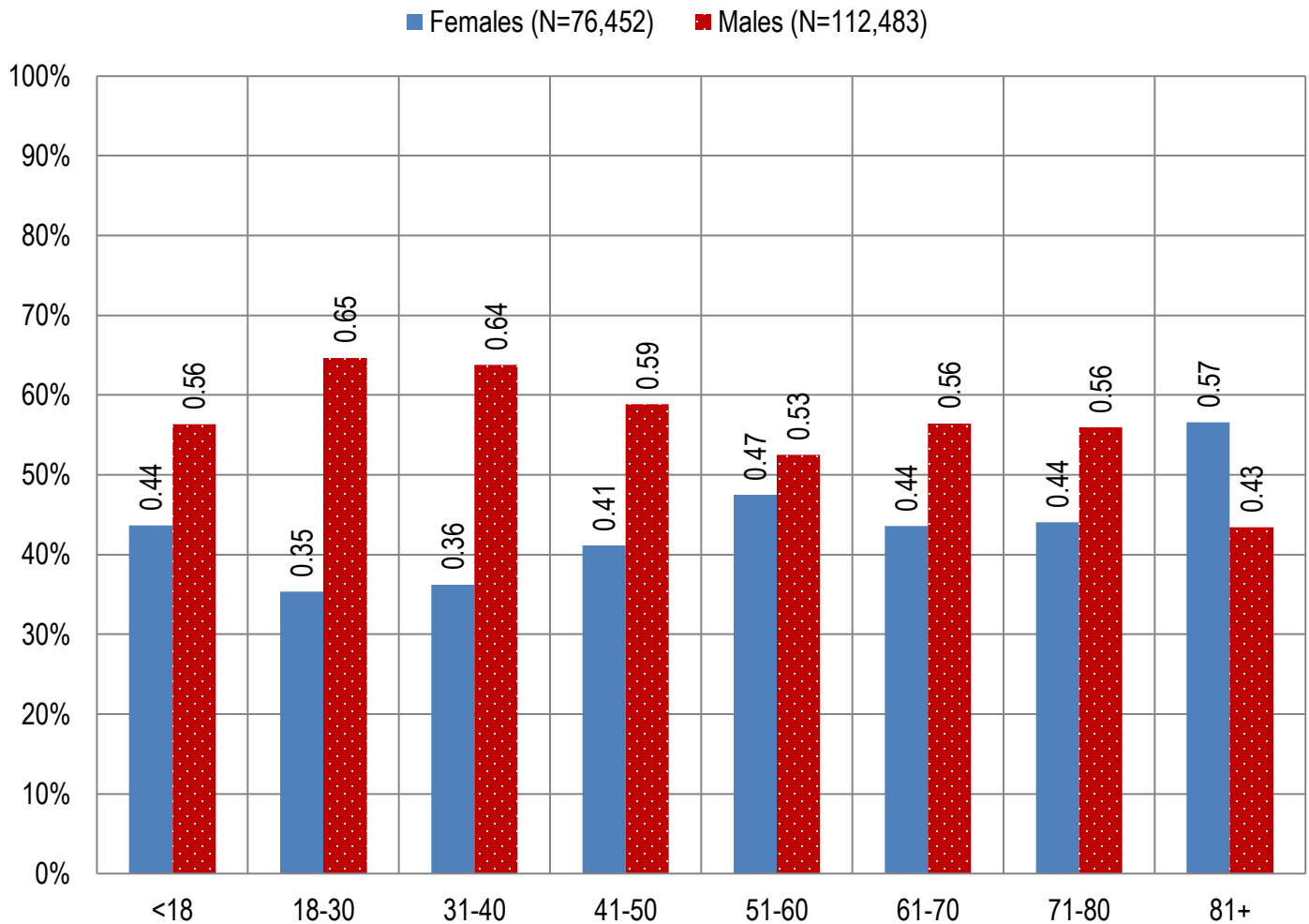
Application profile of qualifying patients	Totals	Percent Total
1. New applications	109,908	58.17%
2. Renewal applications	70,928	37.54%
3. Changed demographics	3,419	1.81%
4. Added Caregivers	193	0.10%
5. Change Dup	4,458	2.36%
6. Replaced Caregivers	27	0.01%
7. Removed Caregivers	2	0.00%
<b>Total</b>	<b>188,935</b>	<b>100.00%</b>

Approximately 11 percent (n = 20,731) of the active cardholders were determined to be SNAP eligible. Of the 20,731 that were determined to be eligible, 10,643 (~51%) were females and 10,088 (~49%) were males.

**Table 3. Arizona Medical Marijuana Active Qualifying Patients Characteristics**

Characteristics of Active Cardholders who are Qualified Patients	Totals (N =188,935)	Percent Total
<b>Patient Age-groups</b>		
Less than 18 years	181	0.10%
18 to 30 years	45,356	24.01%
31 to 40 years	39,462	20.89%
41 to 50 years	29,906	15.83%
51 to 60 years	30,449	16.12%
61 to 70 years	31,030	16.42%
71 to 80 years	10,547	5.58%
81 and older	2,004	1.06%
<b>Patient Gender</b>		
Male	112,483	59.54%
Female	76,452	40.46%

**Figure 1. Arizona Medical Marijuana Active Qualifying Patients Characteristics by Gender and Age (N = 188,935)**

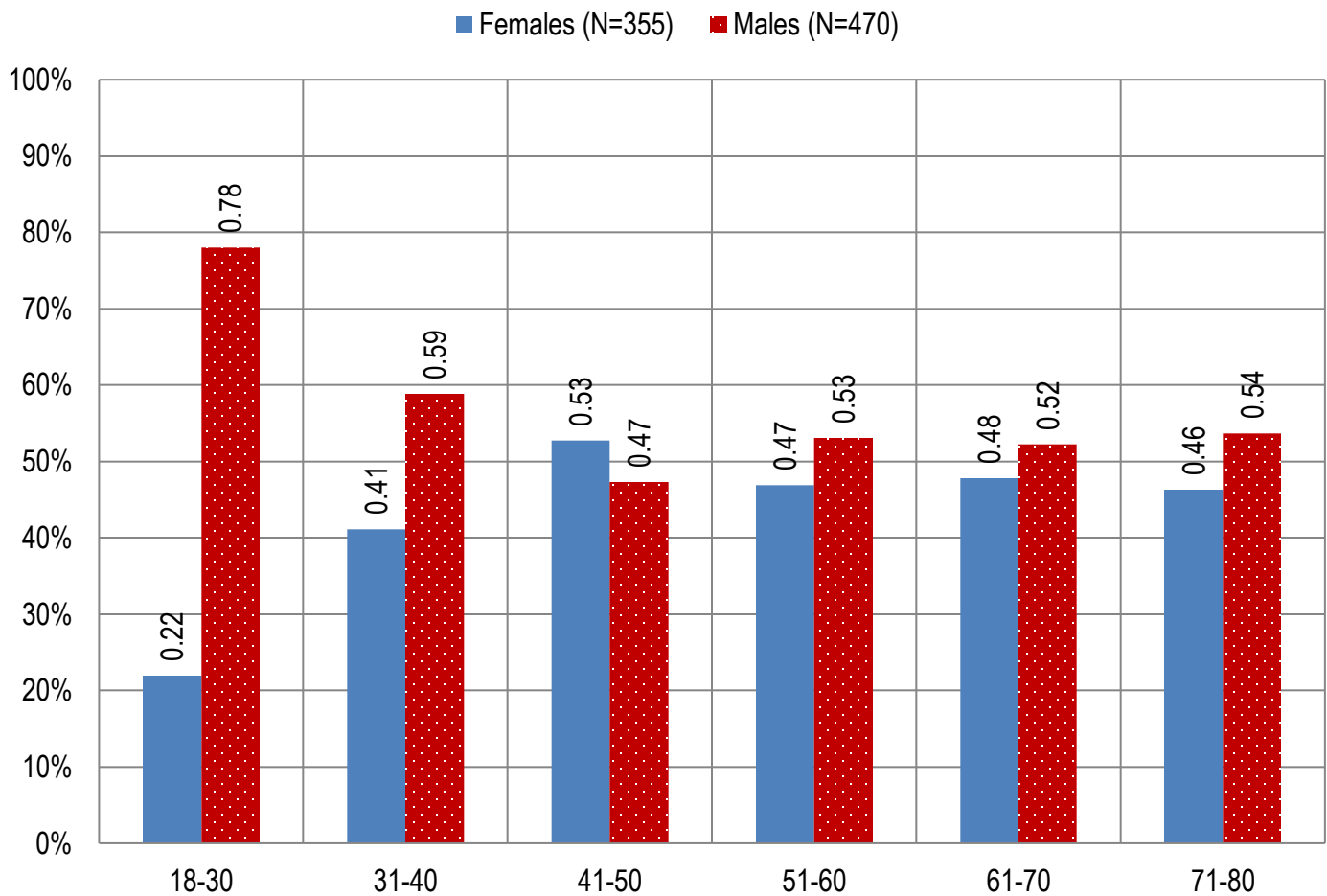


**Table 4. Arizona Medical Marijuana Active Qualifying Patients Medical Condition Profile**

Patient medical condition profile of Active Cardholders <sup>¶</sup>	Totals	Percent Total
Alzheimer's	87	0.05%
Cachexia	137	0.07%
Cancer	4,053	2.15%
Chronic Pain	165,672	87.69%
Crohn's Disease	620	0.33%
Glaucoma	1,108	0.59%
Hepatitis C	751	0.40%
HIV/AIDS	689	0.36%
Muscle Spasms	909	0.48%
Nausea	793	0.42%
Post-Traumatic Stress Disorder (PTSD)	2,311	1.22%
Sclerosis	31	0.02%
Seizures	1,259	0.67%
Two Or More Conditions	10,515	5.57%
<b>TOTAL</b>	<b>188,935</b>	<b>100.00%</b>

<sup>¶</sup>Unique debilitating conditions

**Figure 2. Arizona Medical Marijuana Active Designated Caregiver Characteristics by Gender and Age (N = 825)**



**Table 5. Arizona Medical Marijuana Active Qualifying Patients and Designated Caregivers Authorized for Cultivation**

Active cardholders cultivation status	Totals	Percent Total
Qualifying patients (n =188,935)	2,351	1.24%
Caregivers (n =825)	349	42.30%

**Table 6. Frequency of Qualifying Patients, Caregivers, and Dispensary Agents by County of Residence**

County	Qualifying Patients	Caregivers	Dispensary Agents*
Apache County	840	Count under 20	Count under 20
Cochise County	2,738	Count under 20	149
Coconino County	3,862	32	146
Gila County	1,766	Count under 20	37
Graham County	761	Count under 20	Count under 20
Greenlee County	193	Count under 20	Count under 20
La Paz County	349	Count under 20	Count under 20
Maricopa County	121,886	460	3,415
Mohave County	5,075	Count under 20	157
Navajo County	2,379	Count under 20	226
Pima County	26,294	147	606
Pinal County	11,143	40	212
Santa Cruz County	546	Count under 20	151
Yavapai County	9,438	49	386
Yuma County	1,665	Count under 20	Count under 20
<b>TOTAL</b>	<b>188,935</b>	<b>825</b>	<b>5,566</b>

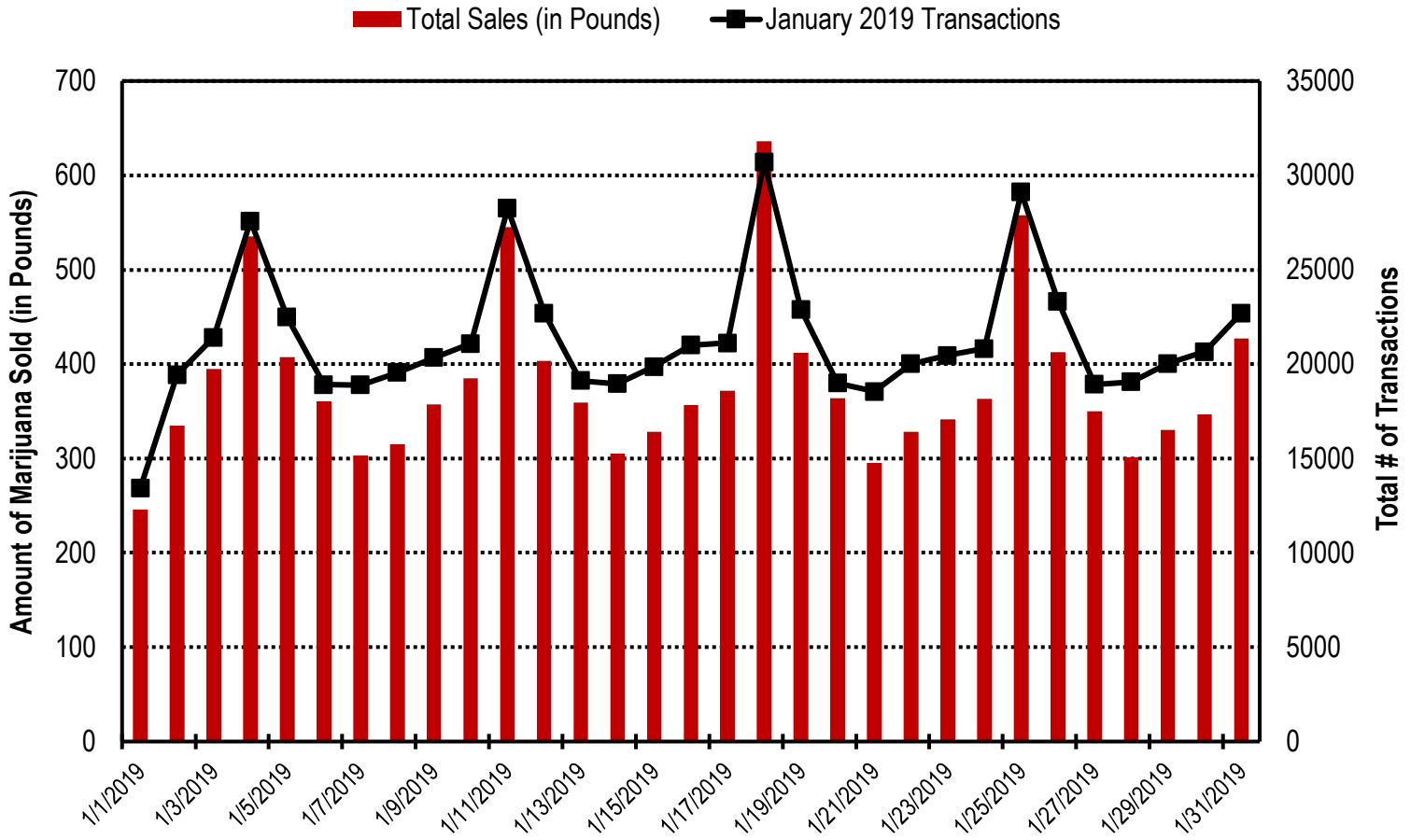
\* 24 Dispensary Agents are located outside of Arizona.

**Table 7. Type and Amount of Transactions at Medical Marijuana Dispensaries in January, 2019**

Type of Transaction <sup>†</sup>	Ounces (oz.)	Pounds
Marijuana	172,361.29	10,772.58
Marijuana Edible	7,259.88	453.74
Marijuana Other	8,766.53	547.91
<b>Total Marijuana Sold</b>	<b>188,387.70</b>	<b>11,774.23</b>

<sup>†</sup>Amounts have been rounded and may not added to exact totals

Figure 4. Daily Transactions and Amount of Marijuana Sold in January, 2019



**YEAR TO DATE**

**Table 1a. Arizona Medical Marijuana Applications Received- Application Profile**

<b>Applications Received Cardholder Profile</b>	<b>Totals</b>	<b>Percent Total</b>
Qualifying patients (QPs)	18,318	94.65%
Caregivers (CGs)	130	0.67%
Dispensary Agents (DA)	906	4.68%
<b>Total</b>	<b>19,354</b>	<b>100.00%</b>

\*Note: For caregivers and dispensary agents, these data reflect unique individuals, not the number of cards.

**Table 1b. Arizona Medical Marijuana Licensed Qualifying Patients, Designated Caregivers and Dispensary Agents Profile**

<b>Applications Approved Cardholder Profile</b>	<b>Totals</b>	<b>Percent Total</b>
Qualifying patients (QPs)	16,026	94.94%
Caregivers (CGs)	99	0.59%
Dispensary Agents (DA)	755	4.47%
<b>Total</b>	<b>16,880</b>	<b>100.00%</b>

\*Note: For caregivers and dispensary agents, these data reflect unique individuals, not the number of cards.

**Table 2. Arizona Medical Marijuana Licensed Qualifying Patient Profile**

<b>Applications Received for Qualifying Patients</b>	<b>Totals</b>	<b>Percent Total</b>
New applications	8,815	55.00%
Renewal applications	6,348	39.61%
Changed demographics	321	2.00%
Added Caregivers	13	0.08%
Change Dup	521	3.25%
Replaced Caregivers	6	0.04%
Removed Caregivers	2	0.01%
<b>Total</b>	<b>160,026</b>	<b>100.00%</b>

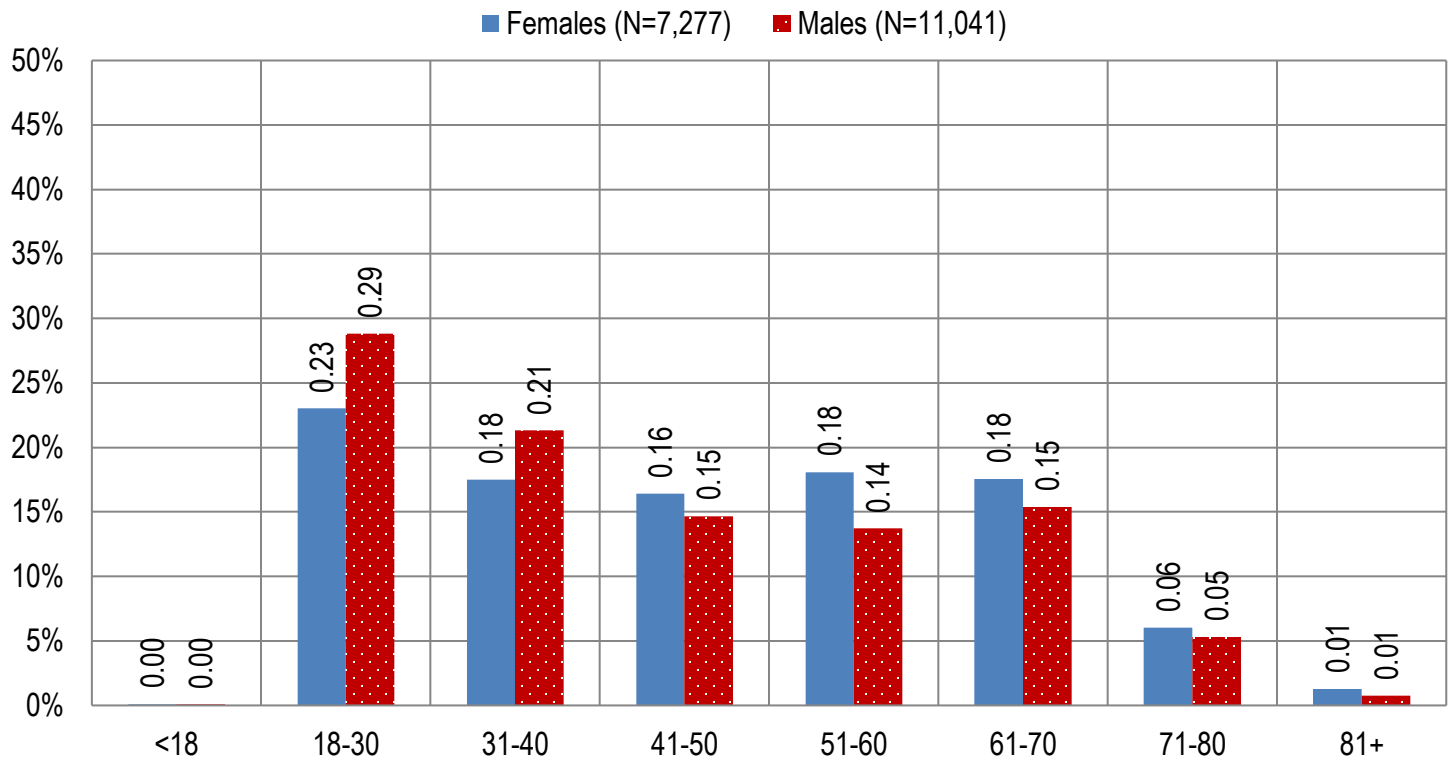
**Table 3a. Arizona Medical Marijuana Applications Received- Patient Characteristics**

<b>Characteristics of Applications Received who are Qualified Patients</b>	<b>Totals (N = 18,318)</b>	<b>Percent Total</b>
<b>Patient Age-groups</b>		
Less than 18 years	15	0.08%
18 to 30 years	4,859	26.53%
31 to 40 years	3,628	19.81%
41 to 50 years	2,816	15.37%
51 to 60 years	2,830	15.45%
61 to 70 years	2,973	16.23%
71 to 80 years	1,022	5.58%
81 and older	175	0.96%
<b>Patient Gender</b>		
Male	11,041	60.27%
Female	7,277	39.73%

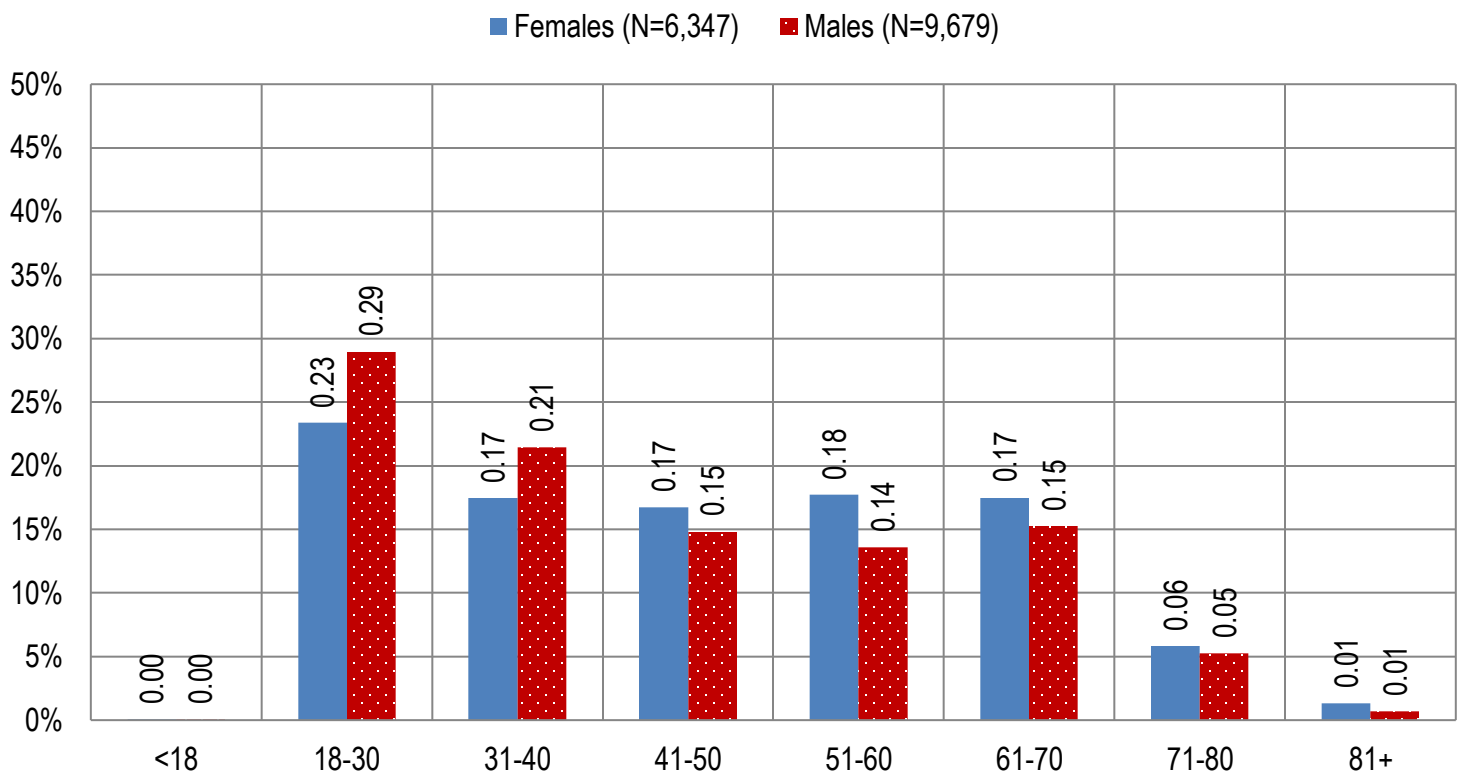
**Table 3b. Arizona Medical Marijuana Licensed Qualifying Patient Characteristics**

<b>Characteristics of Approved Applications who are Qualified Patients</b>	<b>Totals (N = 16,026)</b>	<b>Percent Total</b>
<b>Patient Age-groups</b>		
Less than 18 years	8	0.05%
18 to 30 years	4,287	26.75%
31 to 40 years	3,184	19.87%
41 to 50 years	2,497	15.58%
51 to 60 years	2,437	15.21%
61 to 70 years	2,587	16.14%
71 to 80 years	877	5.47%
81 and older	149	0.93%
<b>Patient Gender</b>		
Male	9,679	60.40%
Female	6,347	39.60%

**Figure 1a. Arizona Medical Marijuana Applications Received- Patient Characteristics by Gender and Age**  
(N =18,318)



**Figure 1b. Arizona Medical Marijuana Licensed Qualifying Patient Characteristics by Gender and Age**  
(N =16,026)

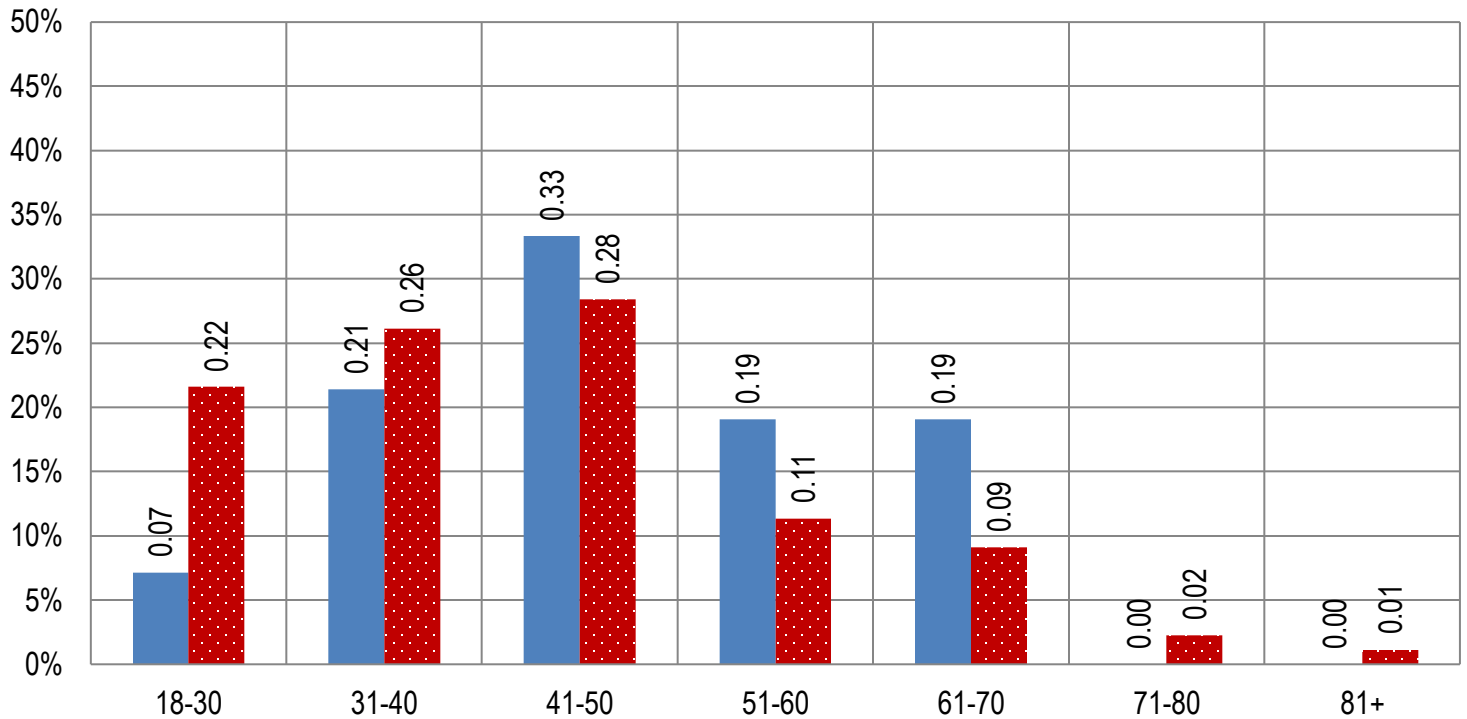




**Figure 2a. Arizona Medical Marijuana Applications Received- Caregivers Characteristics by Gender and Age**

**(N = 130)**

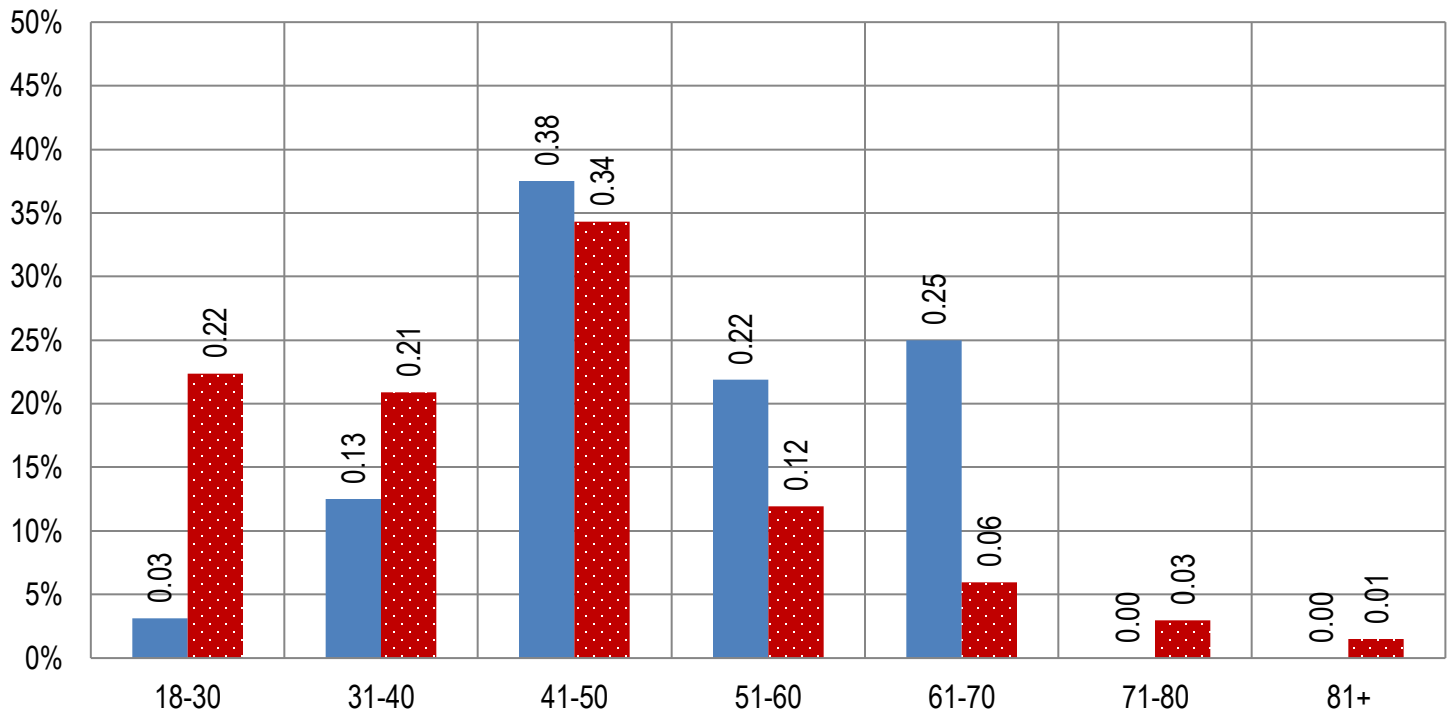
■ Females (N=42) ■ Males (N=88)



**Figure 2b. Arizona Medical Marijuana Licensed Caregivers Characteristics by Gender and Age**

**(N = 99)**

■ Females (N=32) ■ Males (N=67)



**Table 4a. Arizona Medical Marijuana Applications Received- Patient Medical Conditions Profile**

<b>Patient medical condition profile of Applications Received <sup>¶</sup></b>	<b>Totals</b>	<b>Percent Total</b>
Alzheimer's	16	0.09%
Cachexia	12	0.07%
Cancer	348	1.90%
Chronic Pain	16,250	88.71%
Crohn's Disease	66	0.36%
Glaucoma	103	0.56%
Hepatitis C	67	0.37%
HIV/AIDS	55	0.30%
Muscle Spasms	100	0.55%
Nausea	76	0.41%
Post-Traumatic Stress Disorder (PTSD)	223	1.22%
Sclerosis	1	0.01%
Seizures	119	0.65%
Two Or More Conditions	882	4.81%
<b>TOTAL</b>	<b>18,318</b>	<b>100.00%</b>

<sup>¶</sup>Unique debilitating conditions

**Table 4b. Arizona Medical Marijuana Licensed Qualifying Patients Medical Conditions Profile**

<b>Patient medical condition profile of Applications Approved<sup>¶</sup></b>	<b>Totals</b>	<b>Percent Total</b>
Alzheimer's	13	0.08%
Cachexia	10	0.06%
Cancer	291	1.82%
Chronic Pain	14,255	88.95%
Crohn's Disease	58	0.36%
Glaucoma	85	0.53%
Hepatitis C	59	0.37%
HIV/AIDS	52	0.32%
Muscle Spasms	84	0.52%
Nausea	65	0.41%
Post-Traumatic Stress Disorder (PTSD)	179	1.12%
Sclerosis	1	0.01%
Seizures	99	0.62%
Two Or More Conditions	775	4.84%
<b>TOTAL</b>	<b>16,026</b>	<b>100.00%</b>

<sup>¶</sup>Unique debilitating conditions

**Table 5a. Arizona Medical Marijuana Applications Received for Applicants Seeking Authorization to Cultivate**

Applications Received for cardholders with cultivation status	Totals	Percent total
Qualifying patients (n = 18,318)	177	0.97%

**Table 5b. Arizona Medical Marijuana Licensed Qualifying Patients and Designated Caregivers Authorized for Cultivation**

Approved cardholders cultivation status	Totals	Percent total
Qualifying patients (n = 16,026)	177	1.10%

**Table 7a. Type and Amount of Transactions at Medical Marijuana Dispensaries in 2018 to Date**

Type of Transaction <sup>†</sup>	Ounces (oz.)	Pounds
Marijuana	172,361.29	10,772.58
Marijuana Edible	7,259.88	453.74
Marijuana Other	8,766.53	547.91
<b>Total Marijuana Sold</b>	<b>188,387.70</b>	<b>11,774.23</b>

<sup>†</sup>Amounts have been rounded and may not added to exact totals

**Figure 5. Transactions and Amount of Marijuana Sold in 2018 by Month**

