

Arizona Medical Marijuana Program September 2019 Monthly Report

In December 2010, Arizona voters passed the Arizona Medical Marijuana Act (AMMA), A.R.S. §36-2801 *et seq.* The AMMA went into effect on April 14, 2011, making Arizona the fourteenth state to adopt a medical marijuana law. The AMMA designates the Arizona Department of Health Services (ADHS) as the licensing and issuing authority for the Arizona Medical Marijuana Program.

The AMMA monthly report highlights the most current program statistics. This includes data on active medical marijuana cardholders as well as transaction data from the sale of medical marijuana at non-profit medical marijuana dispensaries. Tables 1 through 6 and Figures 1 through 3 reflect data that are point-in-time. Table 7 and Figure 4 are data from the month of September, 2019. The Year-To-Date section which follows shows cumulative applications and approvals for 2019. For further information and statistics, please reference the Arizona Medical Marijuana Annual Report.

Table 1. Arizona Medical Marijuana Active Qualifying Patients, Designated Caregivers and Dispensary Agents Profile

Active Cardholder's Profile	Totals	Percent Total
1. Qualifying patients (QPs)	210,308	96.62%
2. Caregivers (CGs)	733	0.34%
3. Dispensary Agents (DA)	6,633	3.05%
Total	217,674	100.00%

*Note: For caregivers and dispensary agents, these data reflect unique individuals, not the number of cards.

Table 2. Arizona Medical Marijuana Active Qualifying Patients Profile

Application profile of qualifying patients	Totals	Percent Total
1. New applications	121,158	57.61%
2. Renewal applications	80,606	38.33%
3. Changed demographics	3,549	1.69%
4. Added Caregivers	166	0.08%
5. Change Dup	4,809	2.29%
6. Replaced Caregivers	15	0.01%
7. Removed Caregivers	5	0.00%
Total	210,308	100.00%

Approximately 11 percent (n = 24,063) of the active cardholders were determined to be SNAP eligible. Of the 24,063 that were determined to be eligible, 12,427 (~52%) were females and 11,636 (~48%) were males.

Table 3. Arizona Medical Marijuana Active Qualifying Patients Characteristics

Characteristics of Active Cardholders who are Qualified Patients	Totals (N =210,308)	Percent Total
Patient Age-groups		
Less than 18 years	176	0.08%
18 to 30 years	51,200	24.35%
31 to 40 years	44,655	21.23%
41 to 50 years	33,785	16.06%
51 to 60 years	32,997	15.69%
61 to 70 years	33,669	16.01%
71 to 80 years	11,777	5.60%
81 and older	2,049	0.97%
Patient Gender		
Male	124,900	59.39%
Female	85,408	40.61%

Figure 1. Arizona Medical Marijuana Active Qualifying Patients Characteristics by Gender and Age (N = 210,308)

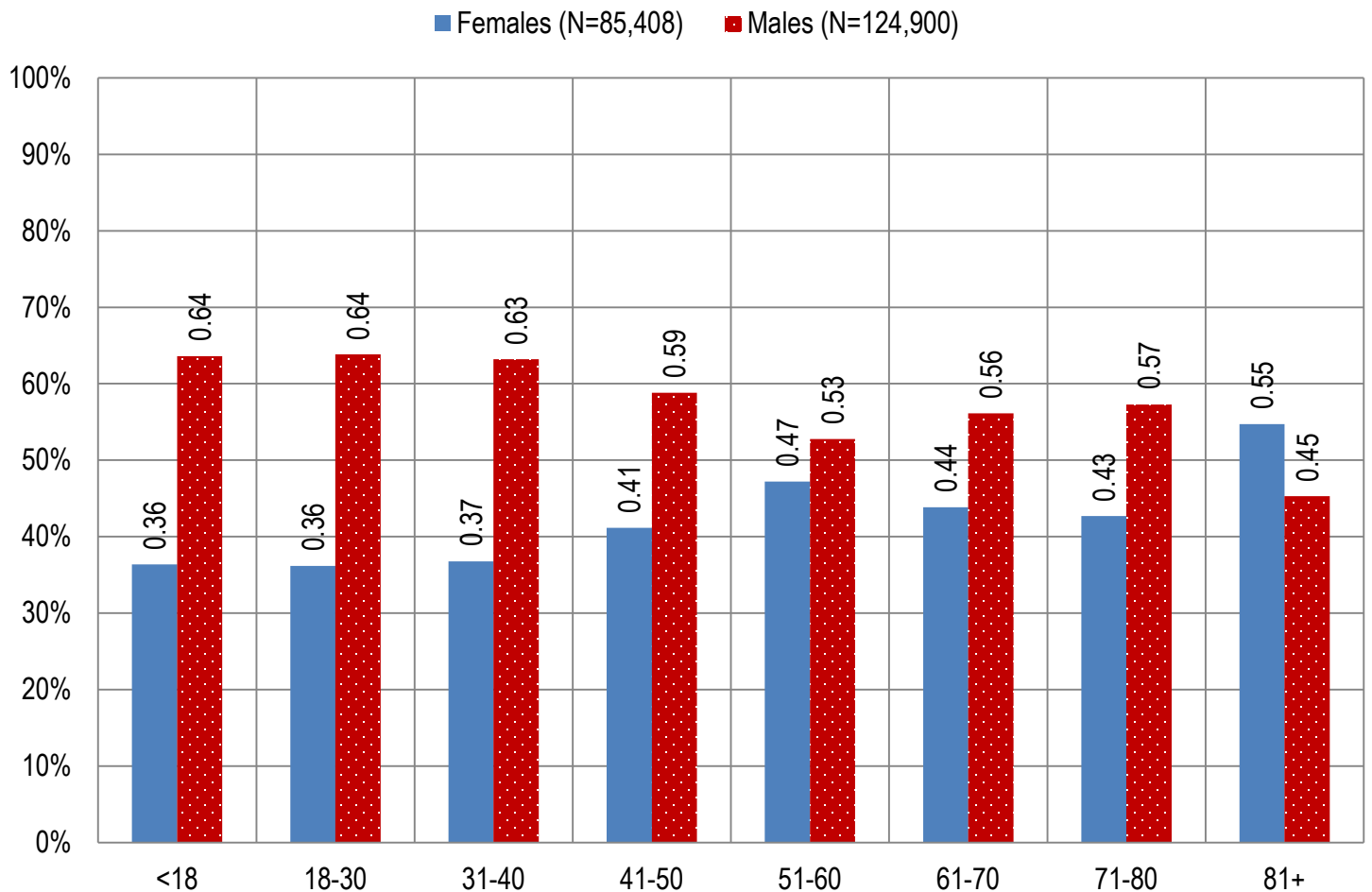


Table 4. Arizona Medical Marijuana Active Qualifying Patients Medical Condition Profile

Patient medical condition profile of Active Cardholders [¶]	Totals	Percent Total
Alzheimer's	94	0.04%
Cachexia	123	0.06%
Cancer	4,002	1.90%
Chronic Pain	187,432	89.12%
Crohn's Disease	635	0.30%
Glaucoma	1,098	0.52%
Hepatitis C	683	0.32%
HIV/AIDS	722	0.34%
Muscle Spasms	914	0.43%
Nausea	817	0.39%
Post-Traumatic Stress Disorder (PTSD)	2,470	1.17%
Sclerosis	29	0.01%
Seizures	1,205	0.57%
Two Or More Conditions	10,084	4.79%
TOTAL	210,308	100.00%

[¶]Unique debilitating conditions

Figure 2. Arizona Medical Marijuana Active Designated Caregiver Characteristics by Gender and Age (N = 733)

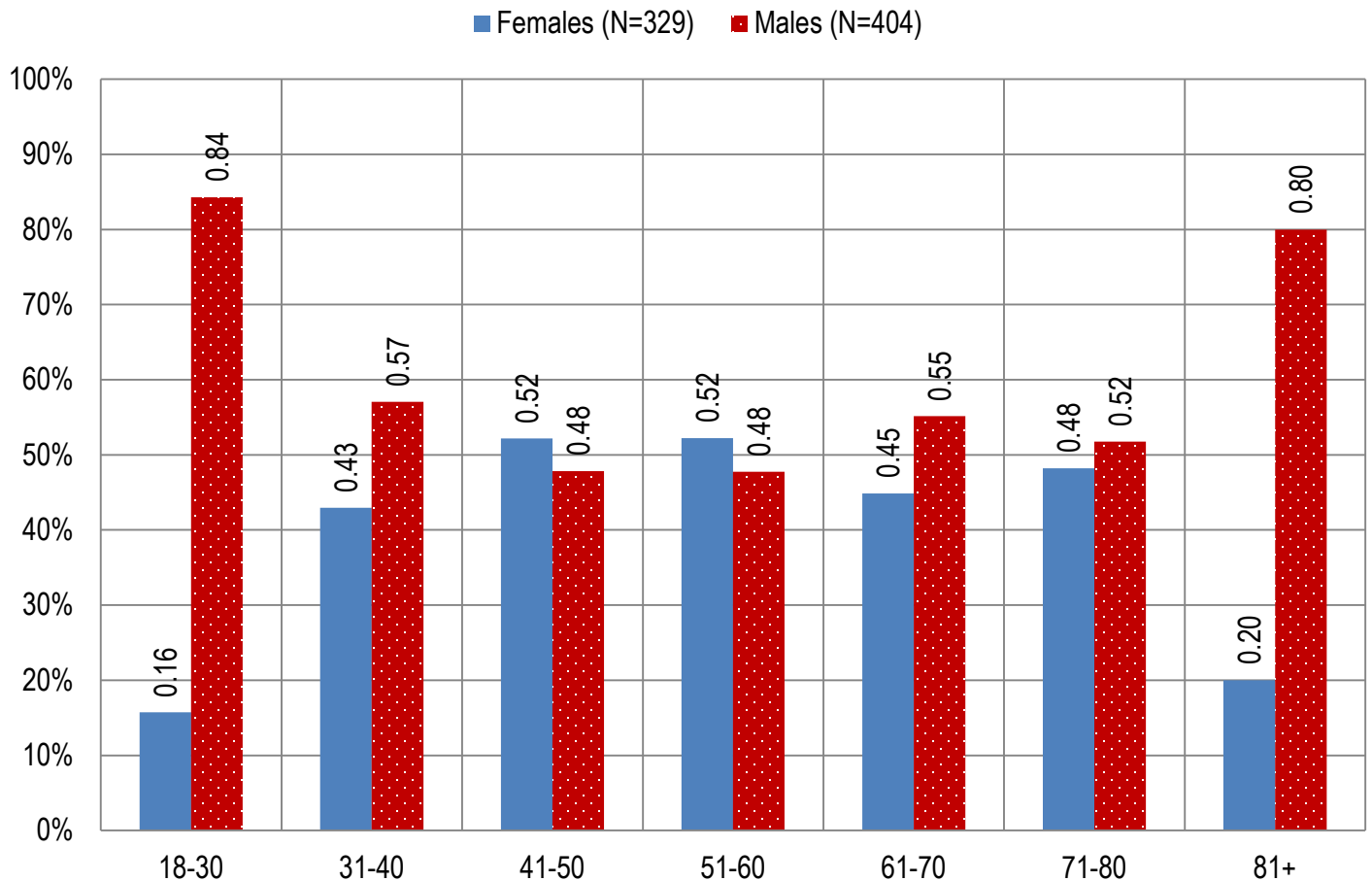


Table 5. Arizona Medical Marijuana Active Qualifying Patients and Designated Caregivers Authorized for Cultivation

Active cardholders cultivation status	Totals	Percent Total
Qualifying patients (n =210,308)	2,352	1.12%
Caregivers (n =733)	280	38.20%

Table 6. Frequency of Qualifying Patients, Caregivers, and Dispensary Agents by County of Residence

County	Qualifying Patients	Caregivers	Dispensary Agents*
Apache County	865	Count under 20	26
Cochise County	3,074	Count under 20	219
Coconino County	4,186	28	147
Gila County	1,904	Count under 20	37
Graham County	865	Count under 20	Count under 20
Greenlee County	210	Count under 20	Count under 20
La Paz County	330	Count under 20	Count under 20
Maricopa County	136,872	413	4,030
Mohave County	5,026	Count under 20	213
Navajo County	2,546	Count under 20	323
Pima County	28,729	122	663
Pinal County	12,774	34	258
Santa Cruz County	656	Count under 20	191
Yavapai County	10,525	50	404
Yuma County	1,746	Count under 20	Count under 20
TOTAL	210,308	733	6,633

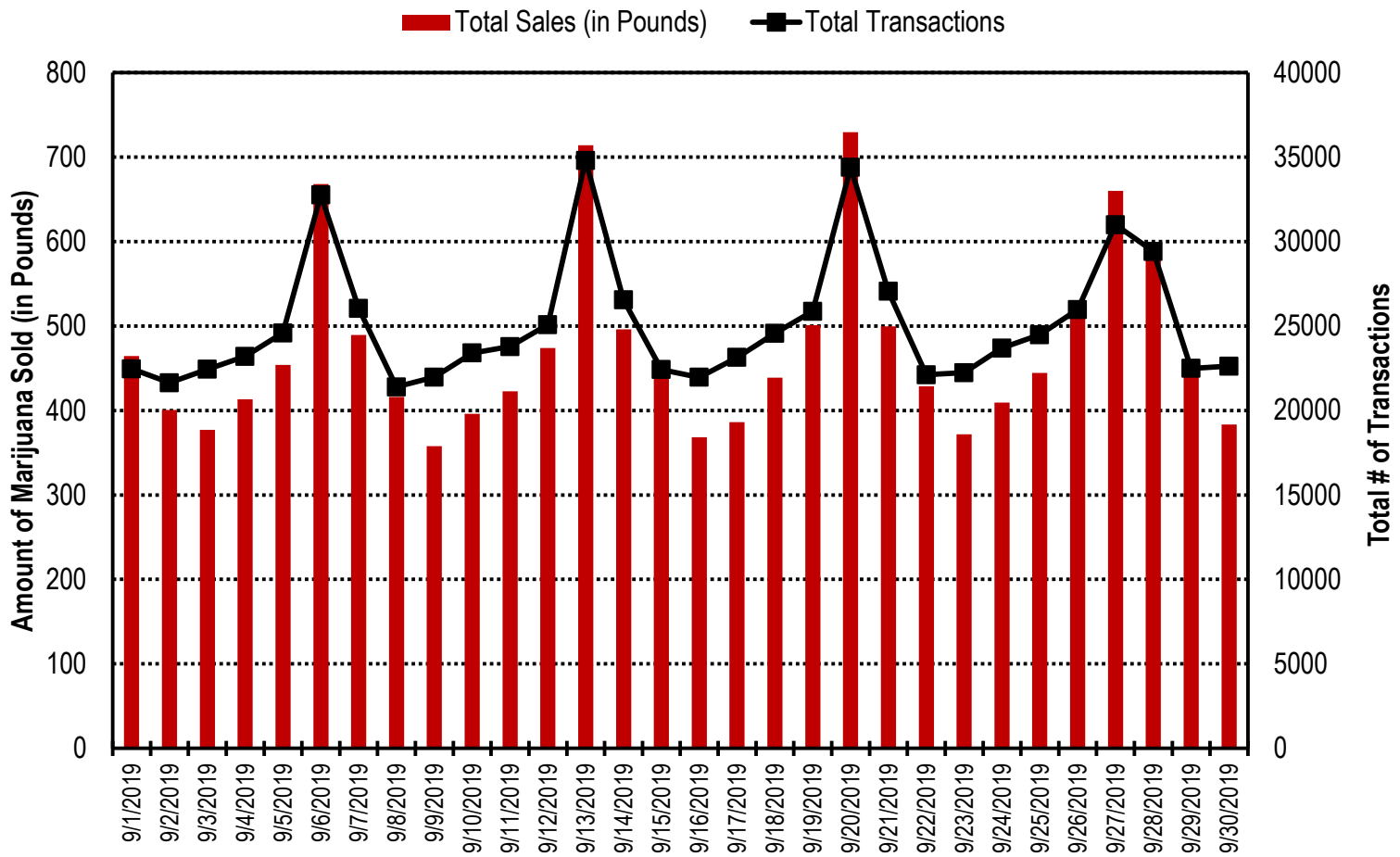
* 78 Dispensary Agents are located outside of Arizona.

Table 7. Type and Amount of Transactions at Medical Marijuana Dispensaries in September 2019

Type of Transaction [†]	Ounces (oz.)	Pounds
Marijuana	206,221.46	12,888.84
Marijuana Edible	7,705.24	481.58
Marijuana Other	12,455.42	778.46
Total Marijuana Sold	226,382.12	14,148.88

[†] Amounts have been rounded and may not added to exact totals

Figure 4. Daily Transactions and Amount of Marijuana Sold in September, 2019



YEAR TO DATE

Table 1a. Arizona Medical Marijuana Applications Received- Application Profile

Applications Received Cardholder Profile	Totals	Percent Total
Qualifying patients (QPs)	178,461	94.79%
Caregivers (CGs)	1,298	0.69%
Dispensary Agents (DA)	8,513	4.52%
Total	188,272	100.00%

*Note: For caregivers and dispensary agents, these data reflect unique individuals, not the number of cards.

Table 1b. Arizona Medical Marijuana Licensed Qualifying Patients, Designated Caregivers and Dispensary Agents Profile

Applications Approved Cardholder Profile	Totals	Percent Total
Qualifying patients (QPs)	175,789	94.92%
Caregivers (CGs)	1,227	0.66%
Dispensary Agents (DA)	8,187	4.42%
Total	185,203	100.00%

*Note: For caregivers and dispensary agents, these data reflect unique individuals, not the number of cards.

Table 2. Arizona Medical Marijuana Licensed Qualifying Patient Profile

Applications Approved for Qualifying Patients	Totals	Percent Total
New applications	99,387	56.54%
Renewal applications	66,355	37.75%
Changed demographics	3,901	2.22%
Added Caregivers	207	0.12%
Change Dup	5,903	3.36%
Replaced Caregivers	29	0.02%
Removed Caregivers	7	0.00%
Total	175,789	100.00%

Table 3a. Arizona Medical Marijuana Applications Received- Patient Characteristics

Characteristics of Applications Received who are Qualified Patients	Totals (N = 178,461)	Percent Total
Patient Age-groups		
Less than 18 years	165	0.09%
18 to 30 years	47,462	26.60%
31 to 40 years	38,172	21.39%
41 to 50 years	28,175	15.79%
51 to 60 years	27,412	15.36%
61 to 70 years	26,905	15.08%
71 to 80 years	8,690	4.87%
81 and older	1,480	0.83%
Patient Gender		
Male	106,291	59.56%
Female	72,170	40.44%

Table 3b. Arizona Medical Marijuana Licensed Qualifying Patient Characteristics

Characteristics of Approved Applications who are Qualified Patients	Totals (N = 175,789)	Percent Total
Patient Age-groups		
Less than 18 years	150	0.09%
18 to 30 years	46,701	26.57%
31 to 40 years	37,578	21.38%
41 to 50 years	27,767	15.80%
51 to 60 years	27,027	15.37%
61 to 70 years	26,544	15.10%
71 to 80 years	8,567	4.87%
81 and older	1,455	0.83%
Patient Gender		
Male	104,679	59.55%
Female	71,110	40.45%

Figure 1a. Arizona Medical Marijuana Applications Received- Patient Characteristics by Gender and Age

(N =178,461)

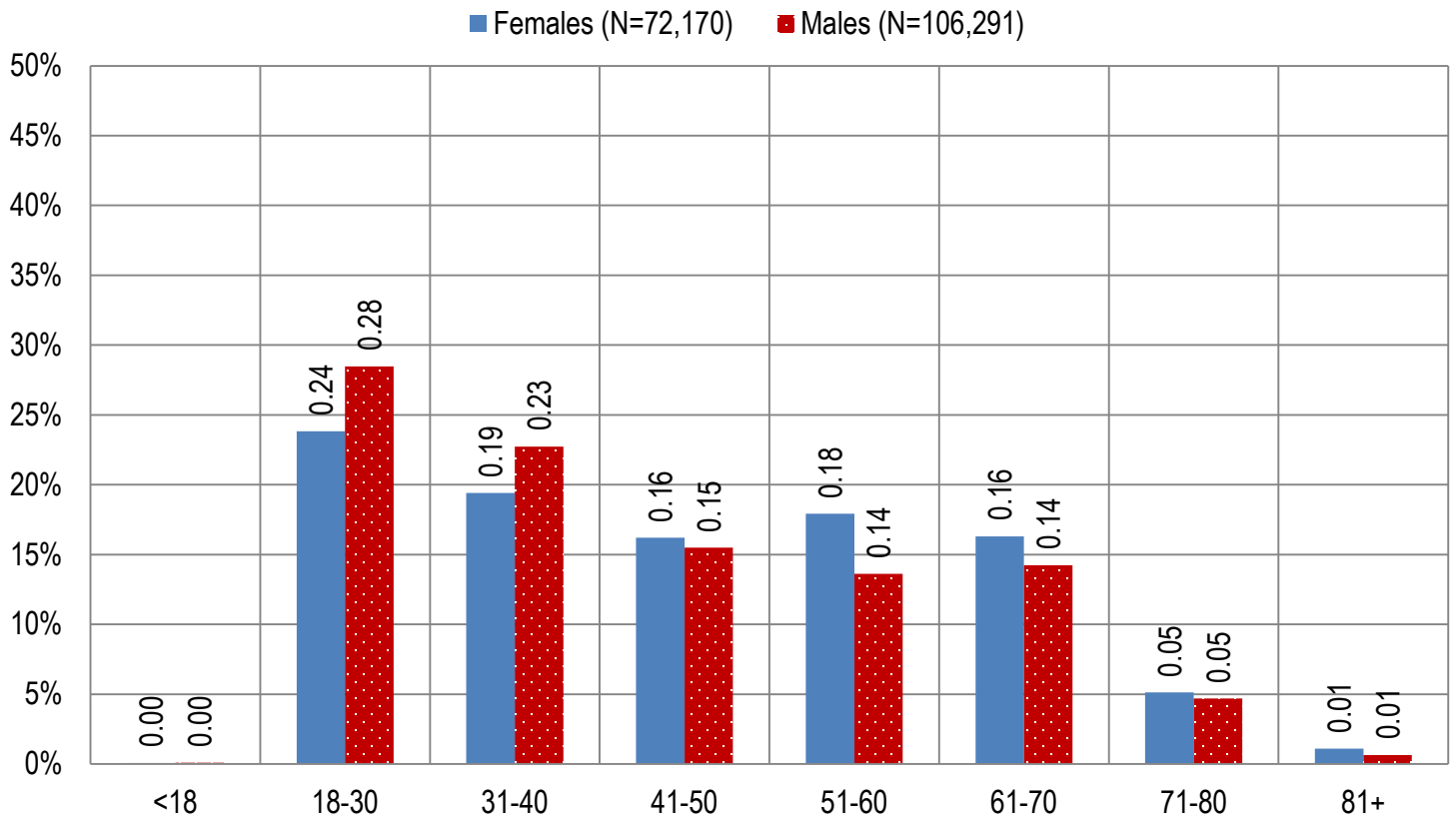


Figure 1b. Arizona Medical Marijuana Licensed Qualifying Patient Characteristics by Gender and Age

(N =175,789)

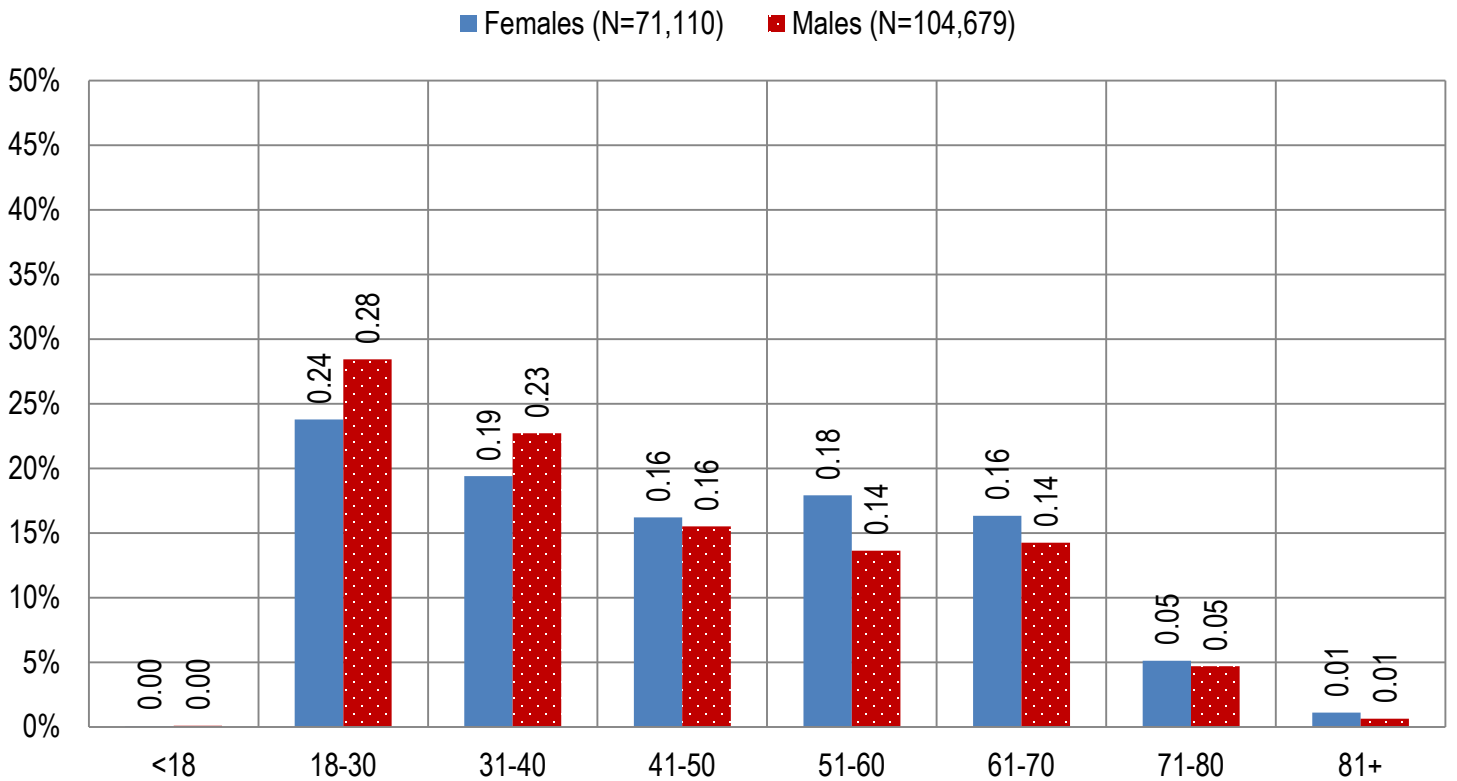


Figure 2a. Arizona Medical Marijuana Applications Received- Caregivers Characteristics by Gender and Age

(N = 1,298)

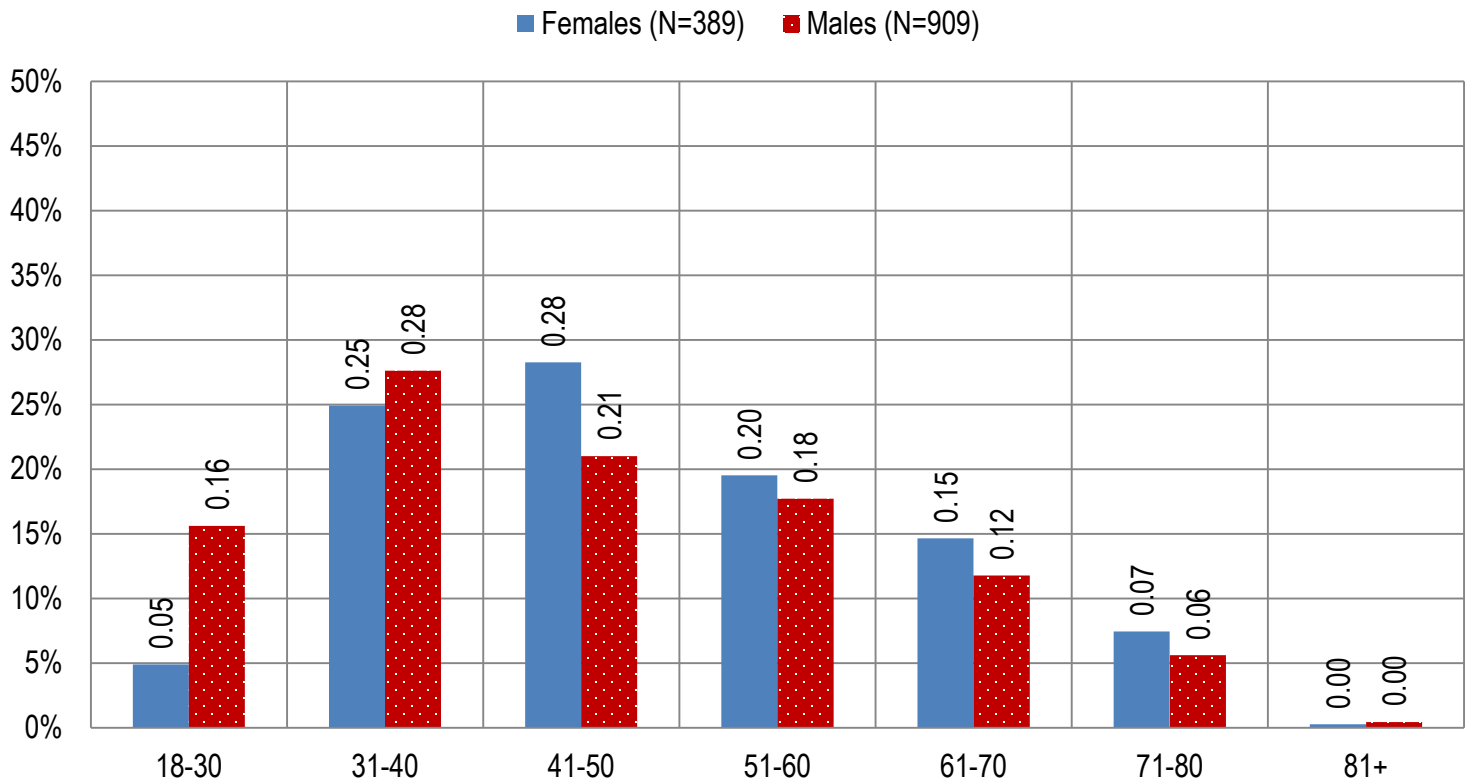


Figure 2b. Arizona Medical Marijuana Licensed Caregivers Characteristics by Gender and Age

(N = 1,227)

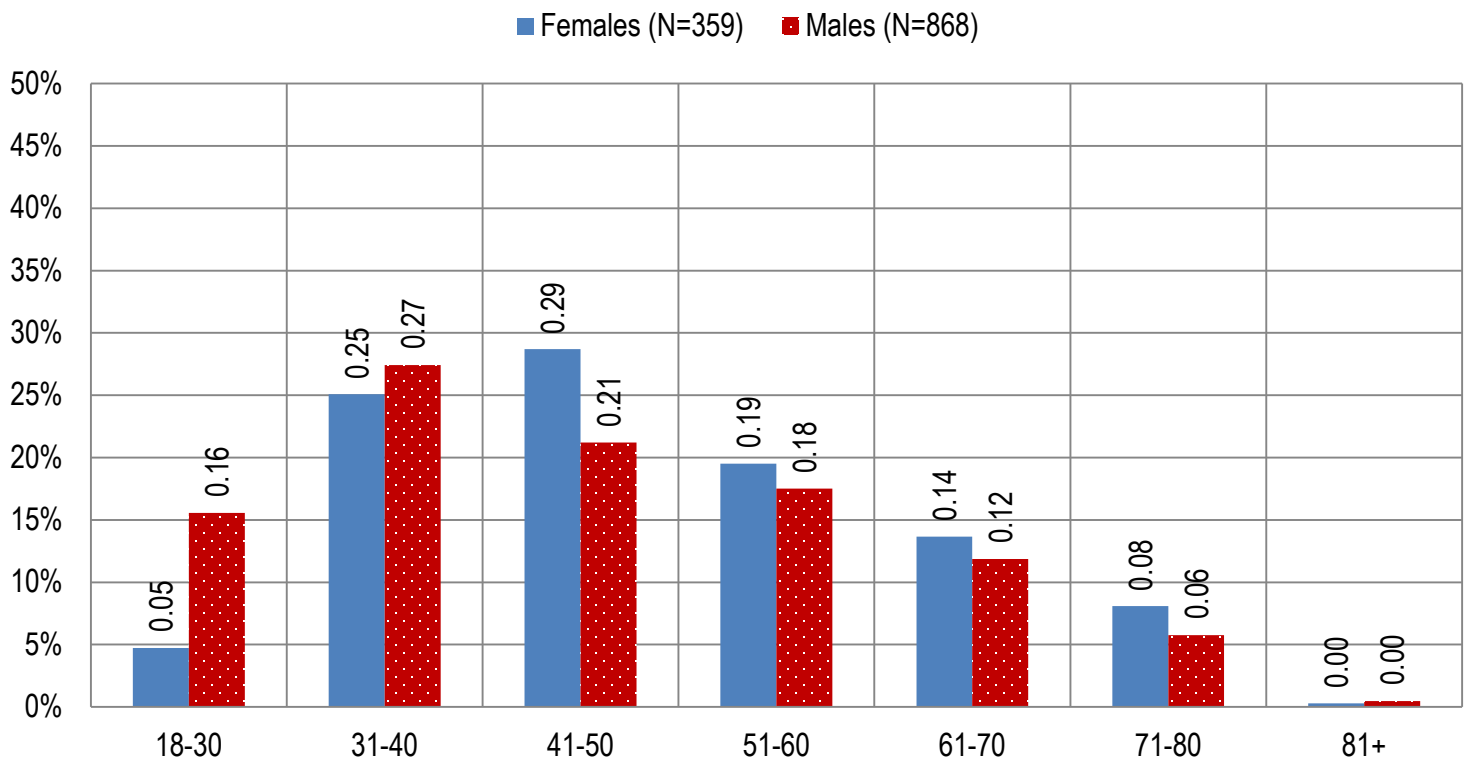


Table 4a. Arizona Medical Marijuana Applications Received- Patient Medical Conditions Profile

Patient medical condition profile of Applications Received [¶]	Totals	Percent Total
Alzheimer's	70	0.04%
Cachexia	97	0.05%
Cancer	3,147	1.76%
Chronic Pain	159,683	89.48%
Crohn's Disease	515	0.29%
Glaucoma	866	0.49%
Hepatitis C	580	0.33%
HIV/AIDS	596	0.33%
Muscle Spasms	739	0.41%
Nausea	690	0.39%
Post-Traumatic Stress Disorder (PTSD)	2,072	1.16%
Sclerosis	23	0.01%
Seizures	1,007	0.56%
Two Or More Conditions	8,376	4.69%
TOTAL	178,461	100.00%

[¶]Unique debilitating conditions

Table 4b. Arizona Medical Marijuana Licensed Qualifying Patients Medical Conditions Profile

Patient medical condition profile of Applications Approved [¶]	Totals	Percent Total
Alzheimer's	67	0.04%
Cachexia	95	0.05%
Cancer	3,096	1.76%
Chronic Pain	157,325	89.50%
Crohn's Disease	510	0.29%
Glaucoma	858	0.49%
Hepatitis C	573	0.33%
HIV/AIDS	581	0.33%
Muscle Spasms	722	0.41%
Nausea	681	0.39%
Post-Traumatic Stress Disorder (PTSD)	2,043	1.16%
Sclerosis	22	0.01%
Seizures	987	0.56%
Two Or More Conditions	8,229	4.68%
TOTAL	175,789	100.00%

[¶]Unique debilitating conditions

Table 5a. Arizona Medical Marijuana Applications Received for Applicants Seeking Authorization to Cultivate

Applications Received for cardholders with cultivation status	Totals	Percent total
Qualifying patients (n = 178,461)	2,001	1.12%

Table 5b. Arizona Medical Marijuana Licensed Qualifying Patients and Designated Caregivers Authorized for Cultivation

Approved cardholders cultivation status	Totals	Percent total
Qualifying patients (n = 175,789)	2,001	1.14%

Table 7a. Type and Amount of Transactions at Medical Marijuana Dispensaries in 2019 to Date

Type of Transaction [†]	Ounces (oz.)	Pounds
Marijuana	1,734,790.13	108,424.38
Marijuana Edible	7,1249.11	4,453.07
Marijuana Other	104,200.50	6,512.53
Total Marijuana Sold	1,910,239.74	119,389.98

[†] Amounts have been rounded and may not added to exact totals

Figure 5. Transactions and Amount of Marijuana Sold in 2019 by Month

