

Arizona Labs Certified for Drinking Water Samples

Apache County

Global Environmental Consulting
928-537-7755

Coconino County

Nortest Analytical
928-774-2312

Inner Basin Environmental
928-774-2312

Maricopa County

Aerobiology Laboratory Associates Inc.
602-441-3700

Apex Environmental Laboratory
602-437-0762

Aquatic Consulting & Testing
480-921-8044

Motzz Laboratory, Inc.
602-454-2376

Fiberquant Analytical Services
(602)-276-6139

Legend Technical Services
602-324-6100

Statewide Disinfection Services
480-981-8859

Nestle Waters North America
602-547-3834

TestAmerica – Cotton Center
602-437-3340

Radiation Safety Engineering, Inc.
480-897-9459

XENCO Labs
480-355-0900

Inter Ag Services
602-273-7248

Mohave County

Mohave Environmental Laboratory
928-754-8101

Pima County

Complete Analytical Services
520-884-5811

Legend Technical Services
520-327-1234

Turner Laboratories, Inc
520-882-5880

Yavapai County

Bradshaw Mountain Environmental Inc.
928-778-4510

Yuma County

Aquapulse Chemicals, LLC
928-317-0456

Fresh Terra Services
928-257-360

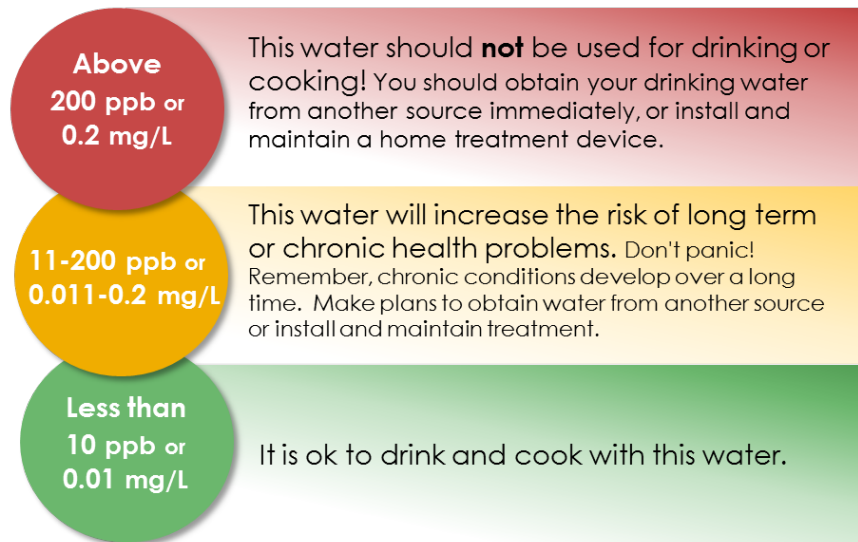
Daily updated list:

<https://app.azdhs.gov/bfs/labs/elbis/drinkingwaterestinglabs/drinkingwatersearchcontentpage.aspx>

How much arsenic is too much arsenic?

Arizona Department of Health Services has developed a simple method to determine if arsenic levels are too high by using the color code below.

* **ppb** is parts per billion and **mg/L** is milligrams per liter.



Recommended Well Testing Schedule

All New Wells	Once a Year	Every 5 Years
<ul style="list-style-type: none"> • Arsenic • Bacteria (total coliform) • Fluoride • Lead • Nitrates • Total dissolved solids • Uranium 	<ul style="list-style-type: none"> • Bacteria: (total coliform) • Nitrates 	<ul style="list-style-type: none"> • Arsenic • Fluoride • Uranium

In addition to the schedule above, have your well tested if:

- There are known problems with well water in your area
- You have experienced problems near your well (flooding, wildfire, land disturbances)
- You notice a change in water quality (taste, color, odor)
- Anyone in your family has an unexplained illness

