

Well Water Safety:

Precautions following a sewage spill

You can't tell if well water is safe to drink based on sight, smell, or taste.
Call a certified laboratory to determine the quality of your well water.
A complete list of certified labs in Arizona can be found on the back of this page.

Sewage-contaminated water may contain fecal matter, bacteria, viruses, chemicals, and other pollutants that can make you sick.




Do Not Use Contaminated Well Water for

drinking
cooking
brushing teeth
washing dishes
washing laundry



washing fruits & veggies
showering
bathing
watering the garden
giving to pets or livestock

Steps to Take

-  use an alternative source of water until your well water has been tested.
-  wells, tanks, and pipes should be completely flushed and disinfected.* Following disinfection, test the water to ensure its safety.
-  if your water test shows that there are dangerous levels of bacteria, viruses, or other contaminants in your well, contact a well contractor for information on next steps.

*For more information on how to disinfect a well, visit
<http://www.health.state.mn.us/divs/eh/wells/waterquality/disinfection.pdf>

If you are on a public water system and have questions about your water quality, contact your public water system provider for guidance.

References

<https://www.cdc.gov/healthywater/emergency/drinking/index.html>
http://www.ct.gov/dph/lib/dph/environmental_health/private_wells/pdf/20_Flood_and_Storm_Water_Concerns_for_PWS.pdf



ARIZONA DEPARTMENT
OF HEALTH SERVICES

Arizona Labs Certified for Drinking Water Samples

Apache County

Global Environmental Consulting
Four Apache County Road 8235
Concho, AZ
928-537-7755

Coconino County

Nortest Analytical
2400 E. Huntington Drive
Flagstaff, AZ
928-774-2312

Inner Basin Environmental

2355 N. Steve Blvd
Flagstaff, AZ
928-774-2312

Maricopa County

Aerobiology Laboratory Associates Inc.
2228 W Northern Ave
Phoenix, AZ
602-441-3700

Apex Environmental Laboratory

2105 S. 48th Street, Ste 102
Tempe, AZ
602-437-0762

Aquatic Consulting & Testing

1525 W. University Drive, Ste 106
Tempe, AZ
480-921-8044

Fiberquant Analytical Services

5025 S 33rd St
Phoenix, AZ
(602)-276-6139

Legend Technical Services

17631 N. 25th Avenue, Phoenix, AZ
602-324-6100

Statewide Disinfection Services

344 S. Hawes Road
Mesa, AZ
480-981-8859

Nestle Waters North America

Phoenix, AZ
602-547-3834

TestAmerica – Cotton Center

4625 E. Cotton Center Boulevard, Ste 189
Phoenix, AZ
602-437-3340

Mohave County

Mohave Environmental Laboratory

2850 Landon Drive, Ste A&B
Bullhead City, AZ
928-754-8101

Pima County

Complete Analytical Services

4455 S. Park Avenue, Ste 110
Tucson, AZ
520-884-5811

Legend Technical Services

4585 S. Palo Verde
Tucson, AZ
520-327-1234

Turner Laboratories, Inc

2445 N. Coyote Drive, Ste 104
Tucson, AZ
520-882-5880

Yavapai County

Bradshaw Mountain Environmental Inc.

3050 N Windsong Dr. Ste 105
Prescott Valley
928-778-4510

Yuma County

Agri-Trend Lab & Consulting

3337 33rd Place Yuma, AZ
928-317-1127

Fresh Terra Services

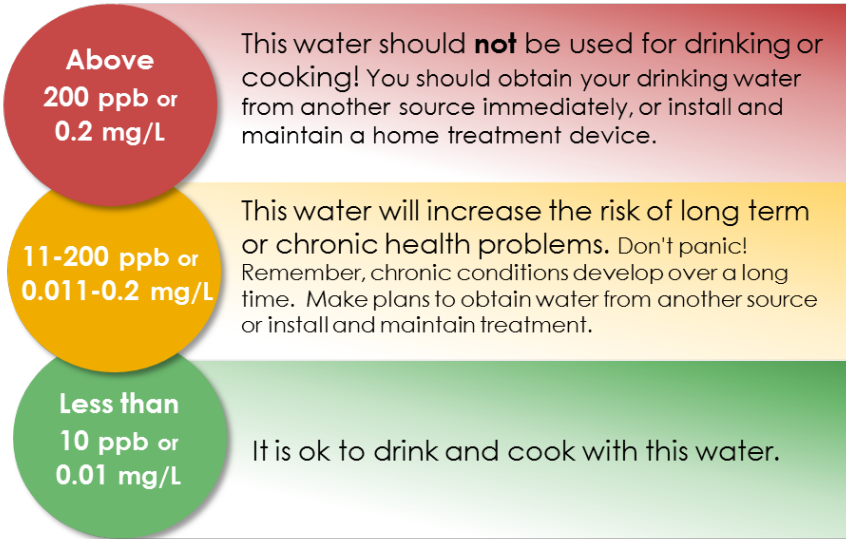
1929 South Arizona Avenue
Yuma, AZ
928-257-3601

Rev. 05/18

How much arsenic is too much arsenic?

Arizona Department of Health Services has developed a simple method to determine if arsenic levels are too high by using the color code below.

* **ppb** is parts per billion and **mg/L** is milligrams per liter.



Recommended Well Testing Schedule

All New Wells	Once a Year	Every 5 Years
<ul style="list-style-type: none"> • Arsenic • Bacteria (total coliform) • Fluoride • Lead • Nitrates • Total dissolved solids • Uranium 	<ul style="list-style-type: none"> • Bacteria: (total coliform) • Nitrates 	<ul style="list-style-type: none"> • Arsenic • Fluoride • Uranium

In addition to the schedule above, have your well tested if:

- There are known problems with well water in your area
- You have experienced problems near your well (flooding, wildfire, land disturbances)
- You notice a change in water quality (taste, color, odor)
- Anyone in your family has an unexplained illness

