

2019–2020 Influenza Season (9/29/2019 – 9/26/2020)

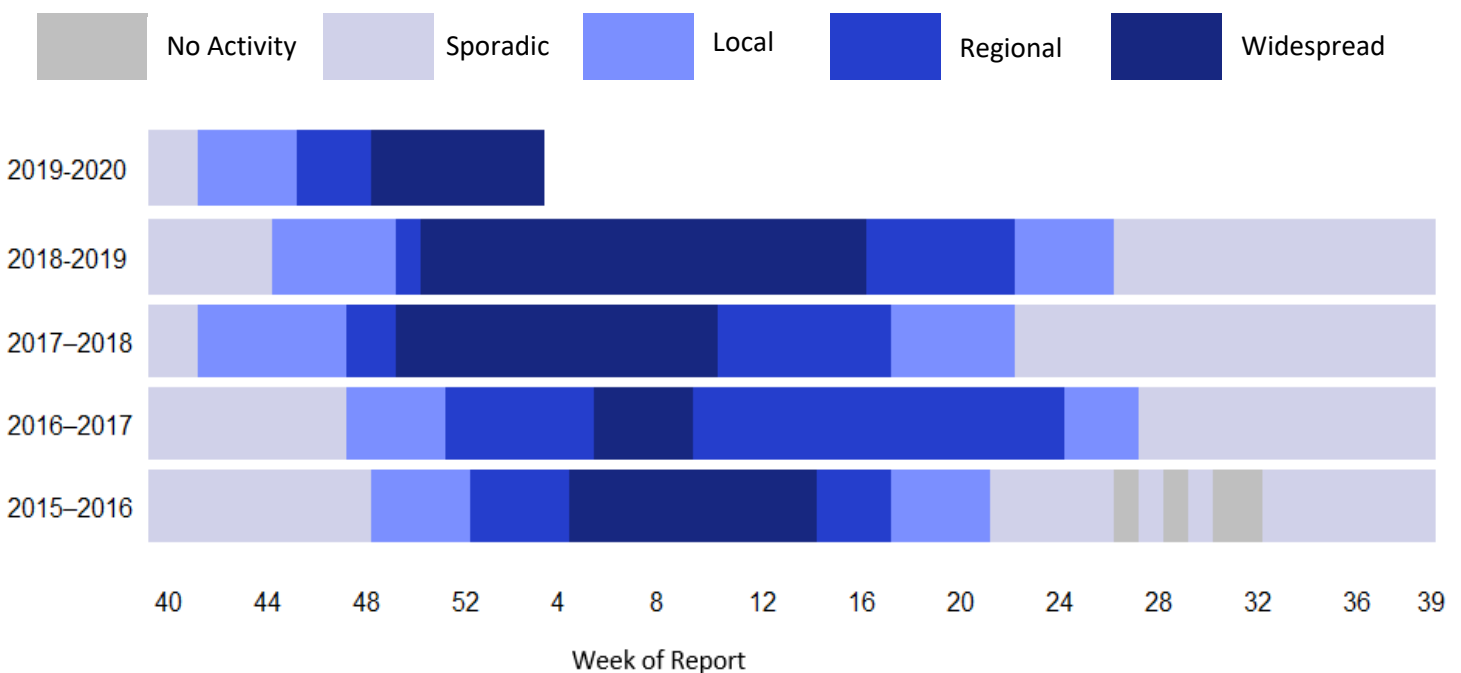
Please see the [interactive influenza dashboard](#) for more details on current and past seasons in Arizona.

Influenza & RSV synopsis

- The numbers in this report are based on processed cases. There are a large number of flu reports that are still being processed.
- Influenza activity is elevated. Arizona reported Widespread Activity for week 3.
- To receive weekly updates, subscribe to the Flu & RSV report at azhealth.gov/email.
- The cases included in this report represent a small proportion of the true number of cases of influenza. Many people do not visit the doctor when ill and doctors should not be expected to run tests on all patients exhibiting influenza-like symptoms.
- One influenza-associated pediatric death has been reported for the 2019-2020 season. The case was PCR positive for B/Victoria.

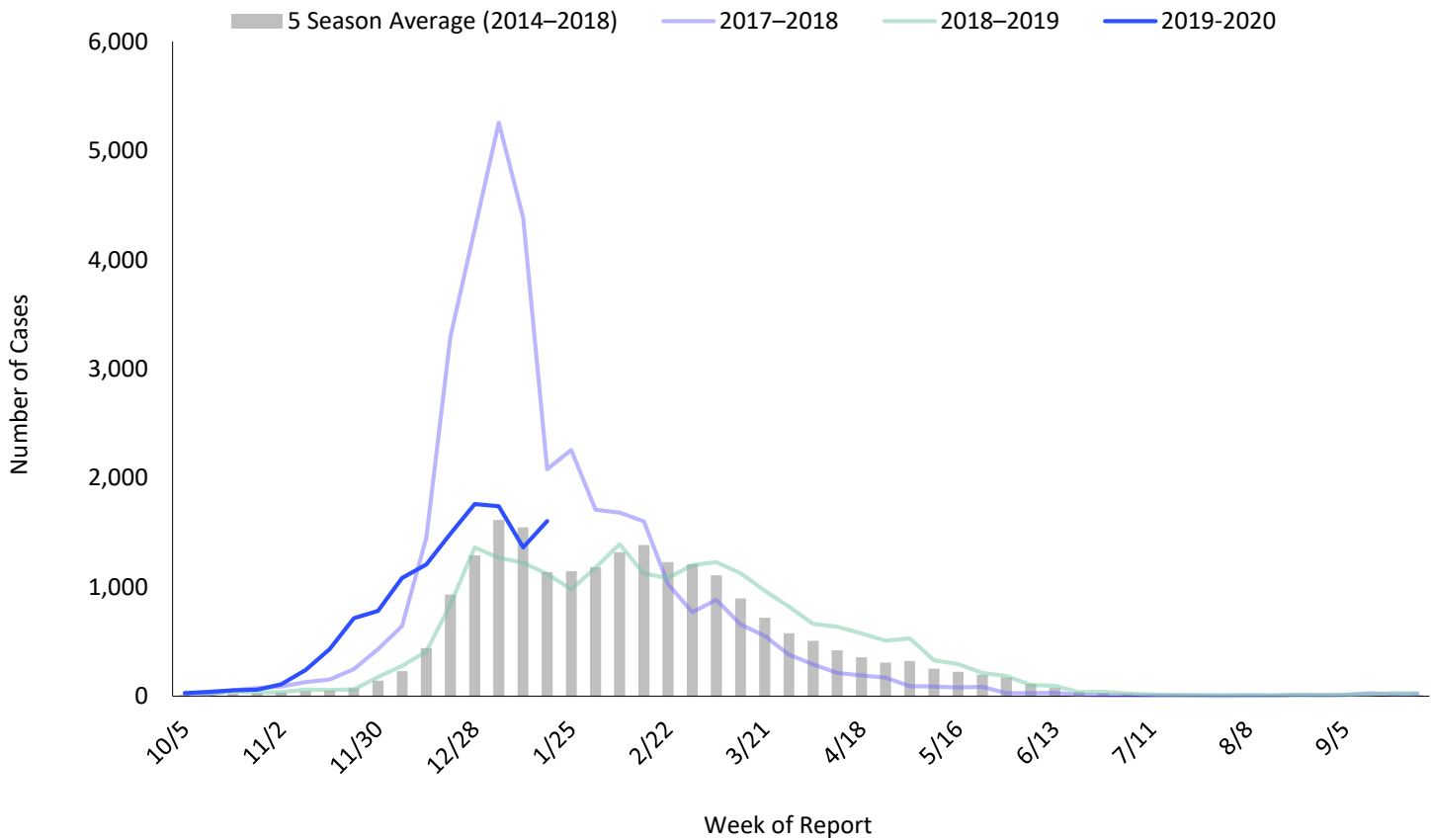
Arizona Influenza Activity Levels (see definitions at the end of this report)

Arizona reported **Widespread** activity for week 3.



Laboratory-Confirmed Influenza Activity by Season

In the past week, there were **1,606 laboratory confirmed** influenza cases.



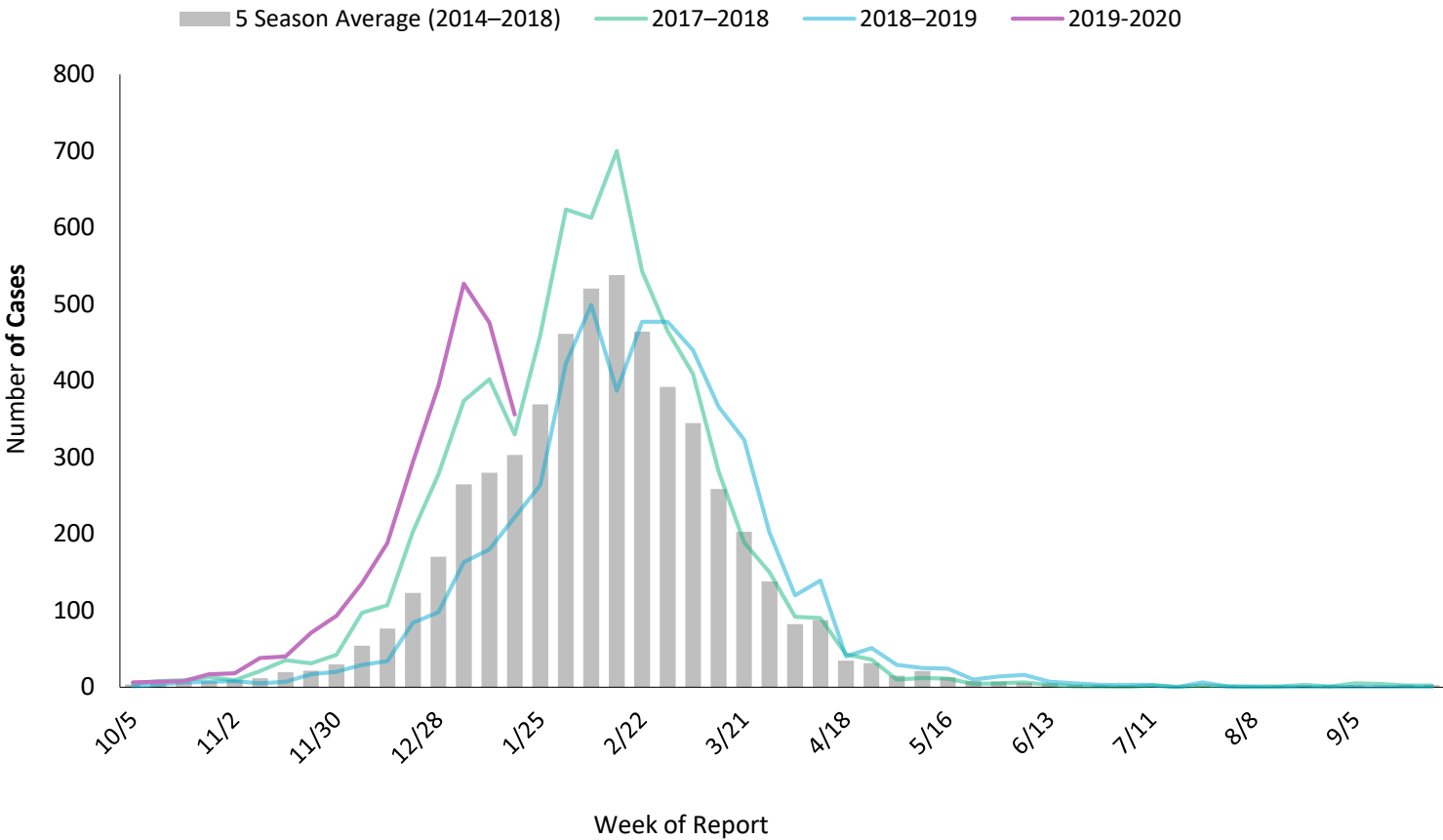
Number of Lab-Confirmed Influenza Cases Reported, by Week of Report: 2014–2020

Table 1: Reported Laboratory-Confirmed Influenza Cases Compared to Past Weeks and Seasons

	Cumulative Season Total	Current Week Total
2019–2020	12,710	1,606
2018–2019	7,035	1,120
5 season average	7,621	1,138
% increase, compared to 2018–2019 season	81%	43%
% increase, compared to a typical influenza season	67%	41%
% increase, compared to last week	14%	18%

Laboratory-Confirmed RSV Activity by Season

In the past week, there were **356 laboratory confirmed RSV cases**.



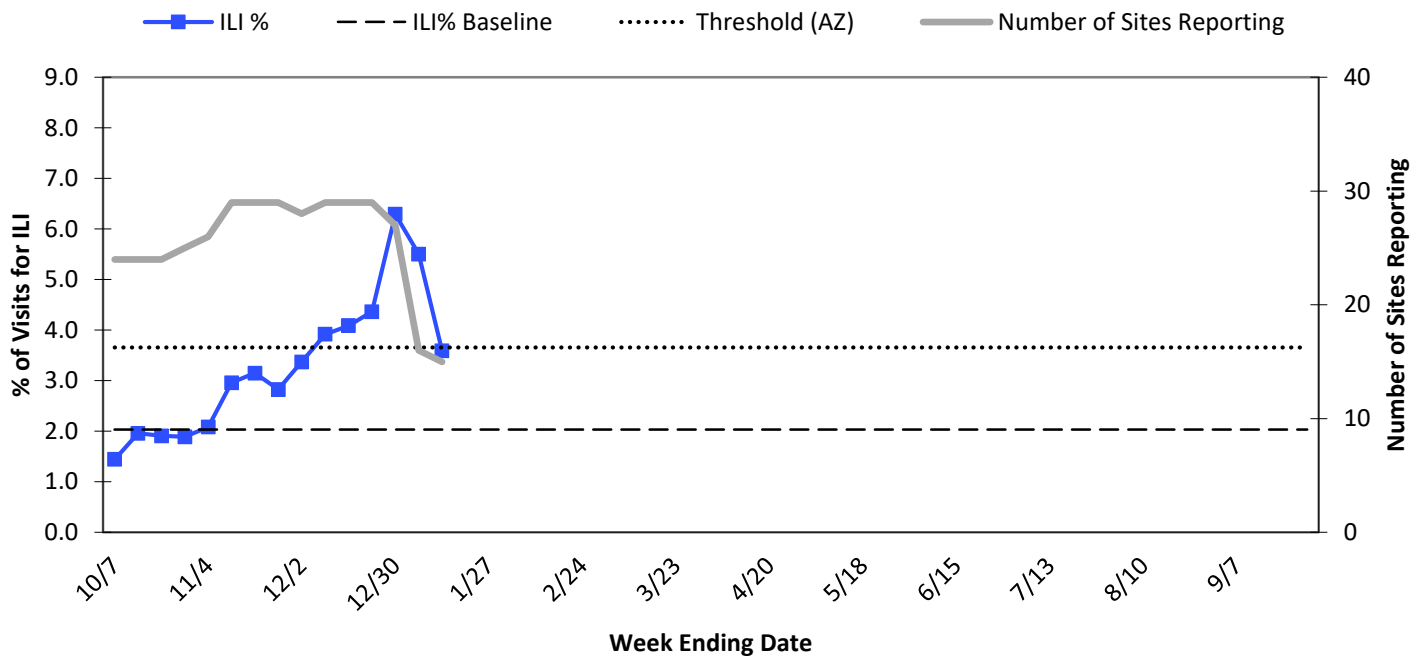
Number of Lab-Confirmed RSV Cases Reported, by Week of Report: 2014–2020

Table 2: Reported Laboratory-Confirmed RSV Cases Compared to Past Weeks and Seasons

	Cumulative Season Total	Current Week Total
2019–2020	2,669	356
2018–2019	884	222
5 season average	1,210	259
% increase, compared to 2018–2019 season	202%	60%
% increase, compared to a typical season	121%	37%

Influenza-Like Illness (ILI) Surveillance from Sentinel Outpatient Providers

ILI percent was below threshold at **3.6%** in week 2.



Percentage of Visits for ILI at Sentinel Providers, 2019-2020, Arizona

*Note: The baseline is defined as the mean of the state ILI% in weeks in the 2015–2018 influenza seasons in which two or more consecutive weeks each accounted for less than 2% of the season’s total number of specimens testing positive for influenza at the Arizona State Public Health Laboratory. The epidemic threshold is defined as the mean plus two standard deviations.

About the Data:

2019–2020 Influenza Season: The season is defined by surveillance weeks. The first day of the 2019–2020 influenza season was September 29, 2019, or week 40 and the 2019–2020 surveillance season will continue through September 26, 2020, or week 39.

Activity Levels: Indicator of the geographic spread of influenza activity, reported to CDC by all states each week.

Widespread: Increased influenza-like illness from sentinel providers (ILI) in three or more regions and large numbers of laboratory-confirmed influenza cases in those regions.

Regional: Increased ILI in two regions and elevated numbers of laboratory-confirmed influenza cases in those regions.

Local: Increased ILI in one region and elevated numbers of laboratory-confirmed influenza cases in that region.

Sporadic: No increase in ILI activity and only isolated laboratory-confirmed influenza cases.

No Activity: No increase in ILI activity and no laboratory-confirmed influenza cases.

Influenza-associated Pediatric Deaths: Influenza-associated pediatric deaths are reportable to the public health departments in Arizona. The 2008–2009 and 2009–2010 seasons showed an increase in influenza-associated deaths in children related to the circulation of the 2009 H1N1 strain. One to five deaths were reported in each of the other seasons since 2004.

Influenza-like illness: Defined as a fever of at least 100°F plus either a cough or a sore throat. In weeks when a relatively low number of enrolled facilities report data, the ILI proportion may not be as representative of Arizona activity as for other weeks. The state ILI baseline is 2.0% and the epidemic threshold is 3.7%*.