

2020–2021 Influenza Season (9/27/2020 – 10/02/2021)

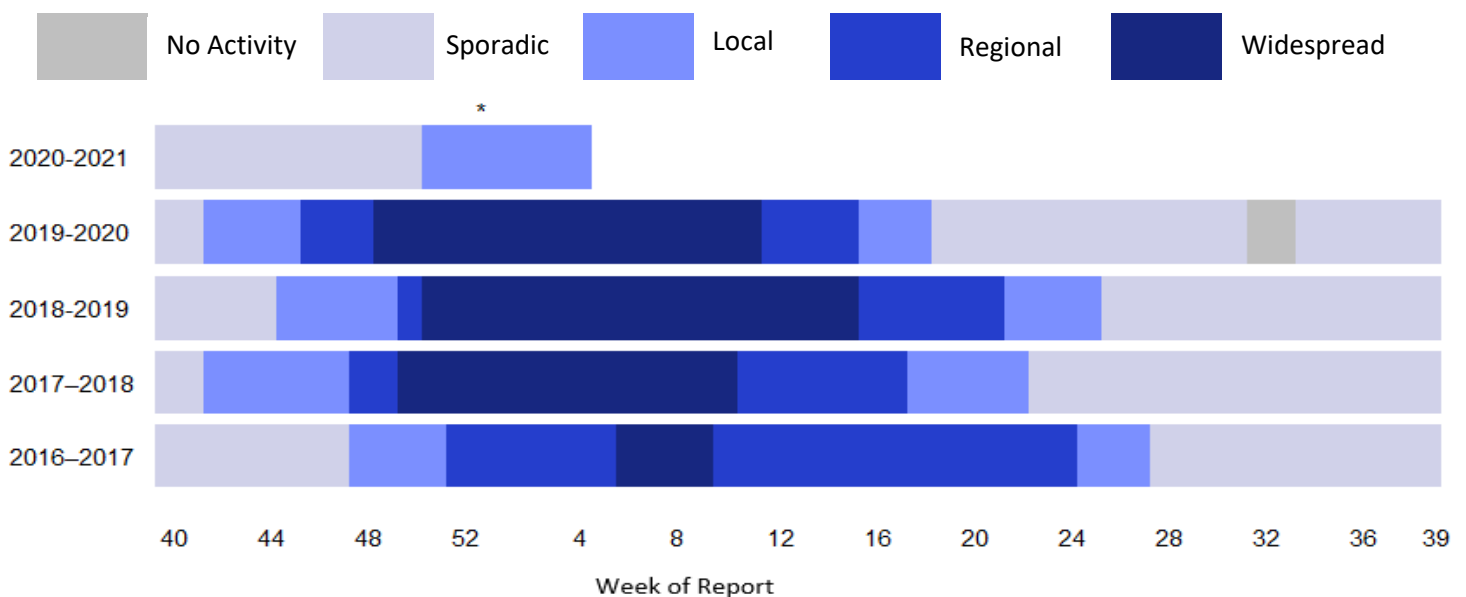
Please see the [interactive influenza dashboard](#) for more details on current and past seasons in Arizona.

Influenza & RSV synopsis

- Influenza activity is low. Arizona reported Local Activity week 4.
- To receive weekly updates, subscribe to the Flu & RSV report at [azhealth.gov/email](mailto:azhealth.gov@email).
- The cases included in this report represent a small proportion of the true number of cases of influenza. Many people do not visit the doctor when ill and doctors should not be expected to run tests on all patients exhibiting influenza-like symptoms.

Arizona Influenza Activity Levels (see definitions at the end of this report)

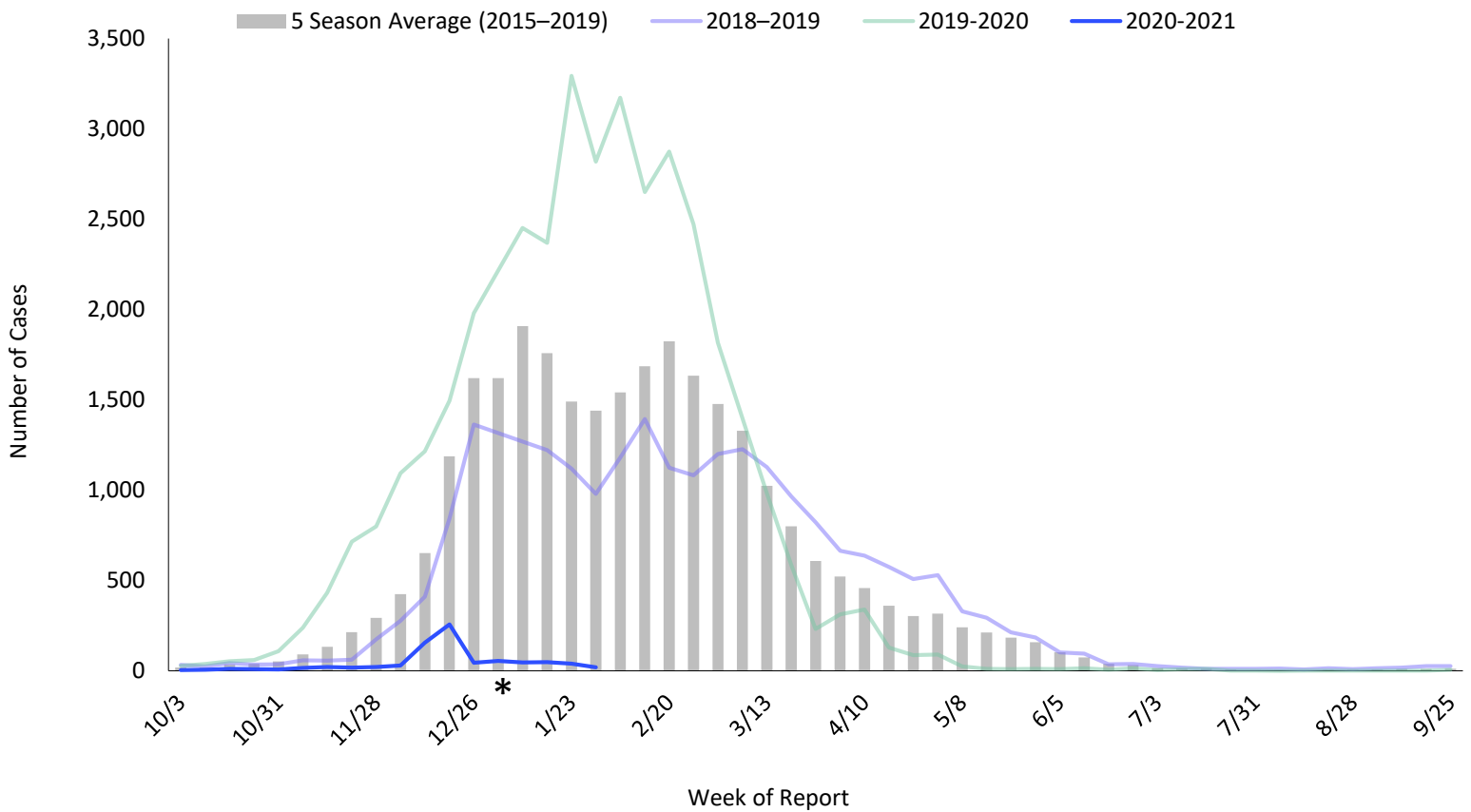
Arizona reported **Local** Activity week 4.



*The 2020-2021 season contains a week 53. There was no week 53 during the previous 5 seasons, so they will be represented by week 52 data.

Laboratory-Confirmed Influenza Activity by Season

In the past week, there were **19 laboratory confirmed** influenza cases.



Number of Lab-Confirmed Influenza Cases Reported, by Week of Report: 2015–2021

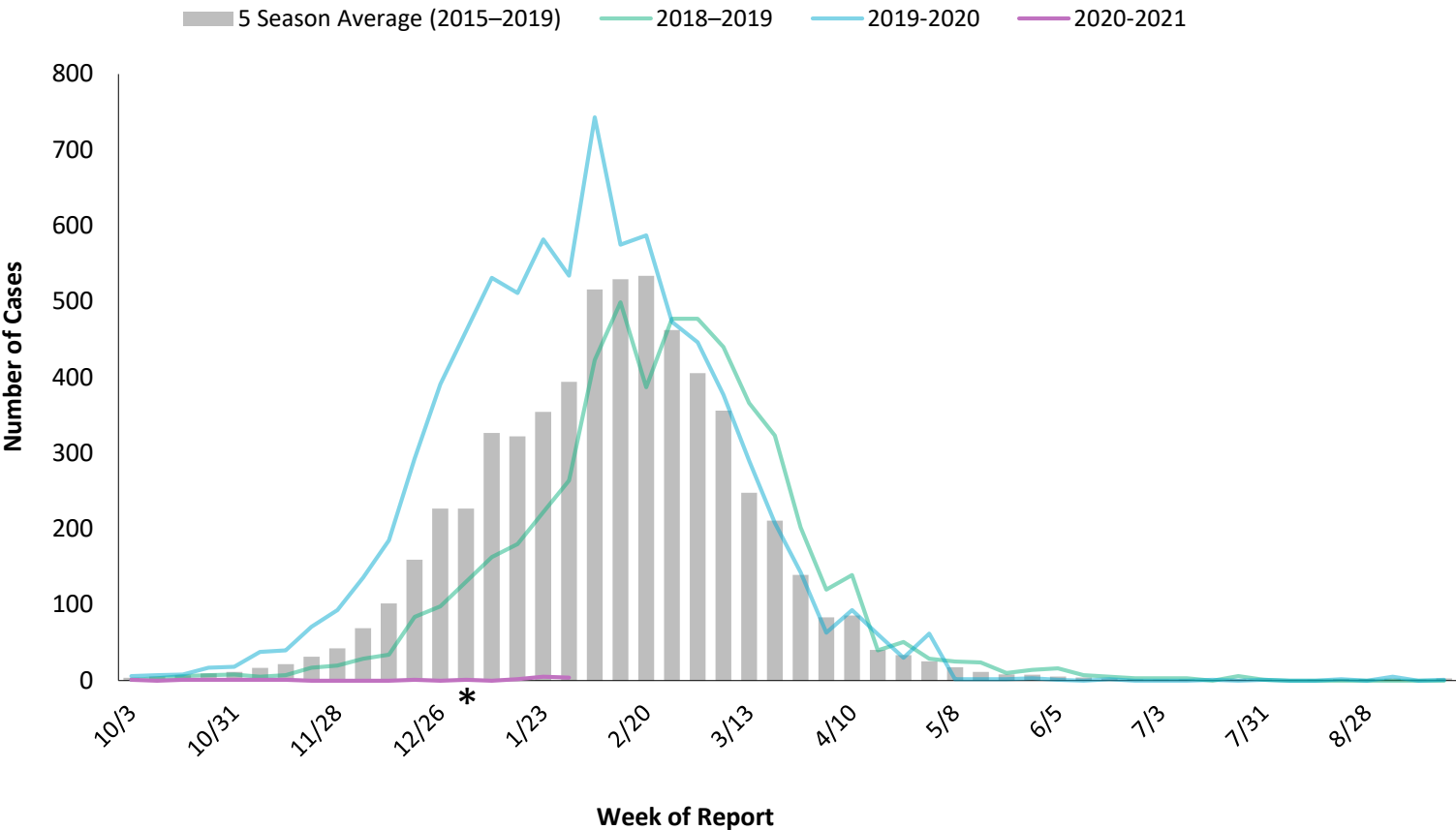
Table 1: Reported Laboratory-Confirmed Influenza Cases Compared to Past Weeks and Seasons

	Cumulative Season Total	Current Week Total
2020–2021	815	19
2019–2020	19,195	2,819
5 season average	11,380	1,440
% increase, compared to 2019–2020 season	-96%	-99%
% increase, compared to a typical influenza season	-93%	-99%
% increase, compared to last week	2%	-53%

*The 2020-2021 season contains a week 53. There was no week 53 during the previous 5 seasons, so they will be represented by week 52 data.

Laboratory-Confirmed RSV Activity by Season

In the past week, there were **4 laboratory confirmed RSV cases**.



Number of Lab-Confirmed RSV Cases Reported, by Week of Report: 2015–2021

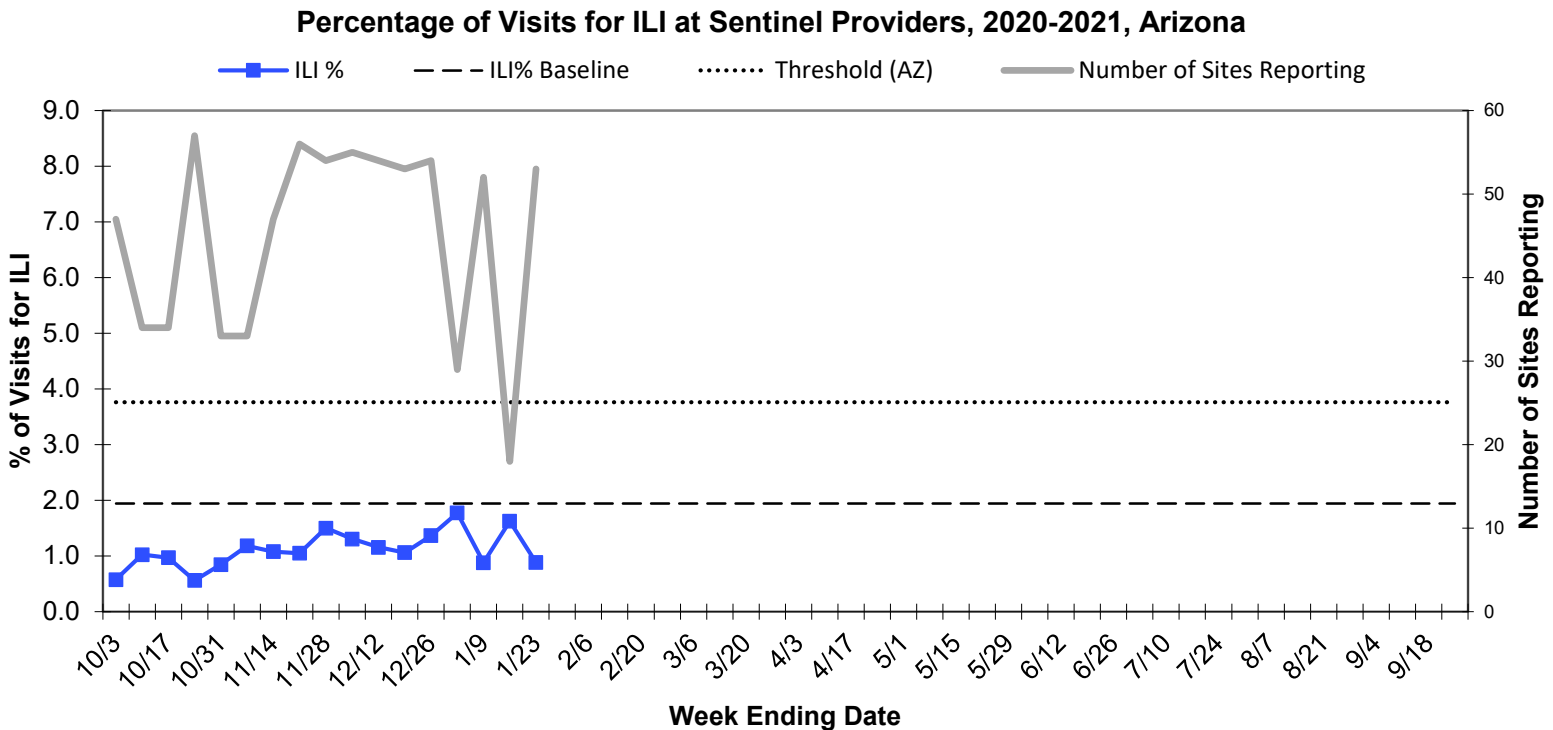
Table 2: Reported Laboratory-Confirmed RSV Cases Compared to Past Weeks and Seasons

	Cumulative Season Total	Current Week Total
2020–2021	19	4
2019–2020	3,461	534
5 season average	2,104	394
% increase, compared to 2019–2020 season	-99%	-99%
% increase, compared to a typical season	-99%	-99%

*The 2020-2021 season contains a week 53. There was no week 53 during the previous 5 seasons, so they will be represented by week 52 data.

Influenza-Like Illness (ILI) Surveillance from Sentinel Outpatient Providers

ILI percent was below the threshold at **0.9%** in week 3.



*Note: The baseline is defined as the mean of the state ILI% in weeks in the 2016–2019 influenza seasons in which two or more consecutive weeks each accounted for less than 2% of the season’s total number of specimens testing positive for influenza at the Arizona State Public Health Laboratory. The epidemic threshold is defined as the mean plus two standard deviations.

About the Data:

2020–2021 Influenza Season: The season is defined by surveillance weeks. The first day of the 2020–2021 influenza season was September 27, 2020, or week 40 and the 2020–2021 surveillance season will continue through October 2, 2021, or week 39.

Activity Levels: Indicator of the geographic spread of influenza activity, reported to CDC by all states each week.

Widespread: Increased influenza-like illness from sentinel providers (ILI) in three or more regions and large numbers of laboratory-confirmed influenza cases in those regions.

Regional: Increased ILI in two regions and elevated numbers of laboratory-confirmed influenza cases in those regions.

Local: Increased ILI in one region and elevated numbers of laboratory-confirmed influenza cases in that region.

Sporadic: No increase in ILI activity and only isolated laboratory-confirmed influenza cases.

No Activity: No increase in ILI activity and no laboratory-confirmed influenza cases.

Influenza-associated Pediatric Deaths: Influenza-associated pediatric deaths are reportable to the public health departments in Arizona. The 2008–2009 and 2009–2010 seasons showed an increase in influenza-associated deaths in children related to the circulation of the 2009 H1N1 strain. One to five deaths were reported in each of the other seasons since 2004.

Influenza-like illness: Defined as a fever of at least 100°F plus either a cough or a sore throat. In weeks when a relatively low number of enrolled facilities report data, the ILI proportion may not be as representative of Arizona activity as for other weeks. The state ILI baseline is 1.9% and the epidemic threshold is 3.8%*.