

## Are healthcare workers vaccinated at your facility?

In 2015, Arizona reported higher healthcare worker (HCW) influenza vaccination rates largely due to a multi-faceted approach. However, the majority of facilities did not reach the 90% or greater HCW seasonal influenza vaccination target set by Healthy People 2020.

### BACKGROUND

Seasonal influenza is a major contributor to morbidity and mortality each year, affecting thousands of people and costing billions of dollars annually<sup>1</sup>. Influenza vaccination of healthcare workers (HCWs) plays a major role in reducing influenza-related illness among healthcare providers and their patients<sup>2</sup>. However, the current national HCW influenza vaccination rate of 75% remains well below the HHS Healthy People 2020 target of 90%<sup>3</sup>. HHS recommends the following strategies as ways to increase influenza vaccination rates within healthcare facilities: implementing a mandatory participation/vaccination policy, requiring proof of vaccination, receiving administrative support, and providing onsite vaccinations and education<sup>4</sup>. In 2014, the Arizona HAI Advisory Committee decided to focus on influenza vaccination strategies that less than 70% of facilities reported to increase vaccination rates.

### METHODS

The Arizona Healthcare-Associated Infections (HAI) Advisory Committee conducted a survey in various healthcare settings in the state from March 23, 2015-June 8, 2015 asking about current:

- facility HCW influenza vaccination rate estimates
- policies and strategies for influenza vaccination of HCWs

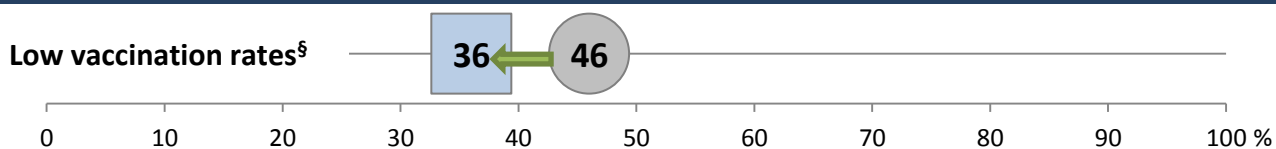
A link to an anonymous electronic Survey Monkey survey was e-mailed to 420 facilities including 65 acute care hospitals (ACH), 15 critical access hospitals (CAH), 117 dialysis facilities (ESRD), 147 long-term care (LTC), and 76 ambulatory surgical centers (ASC). One person was asked to respond for each facility.

For comparative analyses, data from the 2014 Arizona Healthcare Influenza Vaccination Survey was used. As a continuation of 2014 efforts, vaccination strategies that were reported at a rate of less than 70% were targeted.

### More AZ facilities reported high HCW influenza vaccination rates in 2015 ■ than in 2014 ● ...



### and fewer facilities reported low HCW influenza vaccination rates.



<sup>α</sup>Self-reported proportion of facilities with ≥91% of HCWs vaccinated against influenza

<sup>§</sup>Self-reported proportion of facilities with ≤70% of HCWs vaccinated against influenza

1. Molinari, N. (2007). The annual impact of seasonal influenza in the US: Measuring disease burden and costs. *Vaccine*, 25(27), 5086-96. Retrieved July 16, 2015, from <http://www.ncbi.nlm.nih.gov/pubmed/17544181>

2. CDC. (2015, June 11). Influenza Vaccination Information for Health Care Workers. Retrieved July 16, 2015, from <http://www.cdc.gov/flu/healthcareworkers.htm>

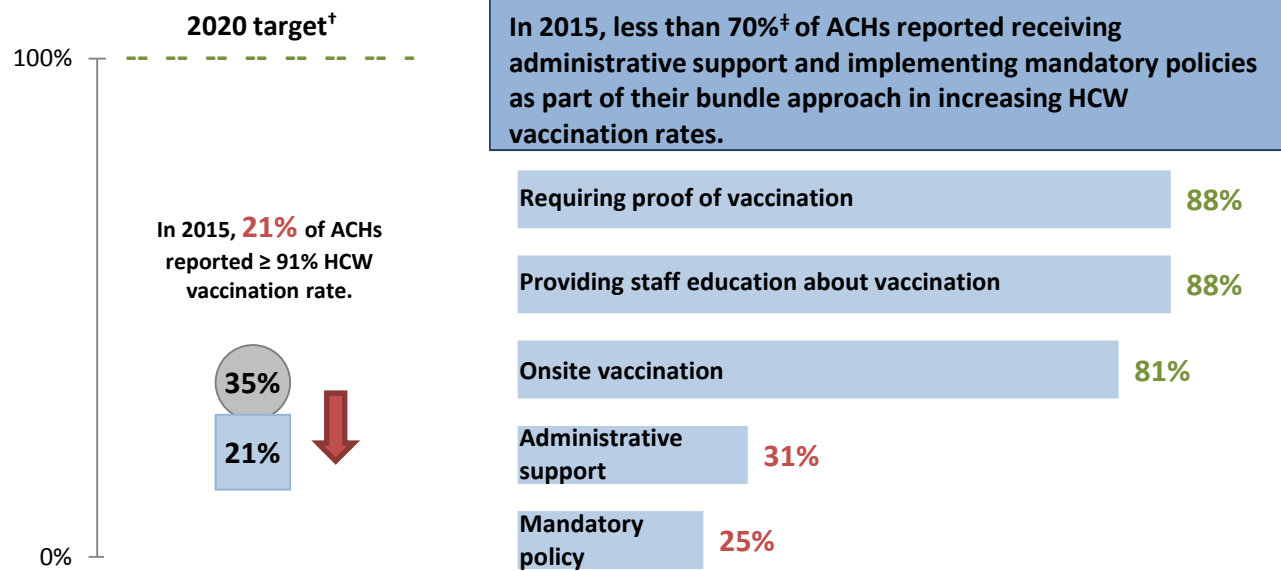
3. HHS. (n.d.). Immunization and Infectious Diseases. Retrieved July 16, 2015, from <http://www.healthypeople.gov/2020/topics-objectives/topic/immunization-and-infectious-diseases/objectives>

4. HHS. (n.d.). Recommendations on Strategies to Achieve the Healthy People 2020 Annual Influenza Vaccine Coverage Goal for Health Care Personnel. Retrieved August 6, 2015, from [http://www.hhs.gov/nvpo/nvac/influenza\\_subgroup\\_final\\_report.pdf](http://www.hhs.gov/nvpo/nvac/influenza_subgroup_final_report.pdf)

# ACH (Acute care hospitals)

- 2015 participation rate: 25% (n=16)
- 2014 participation rate: 58% (n=36)

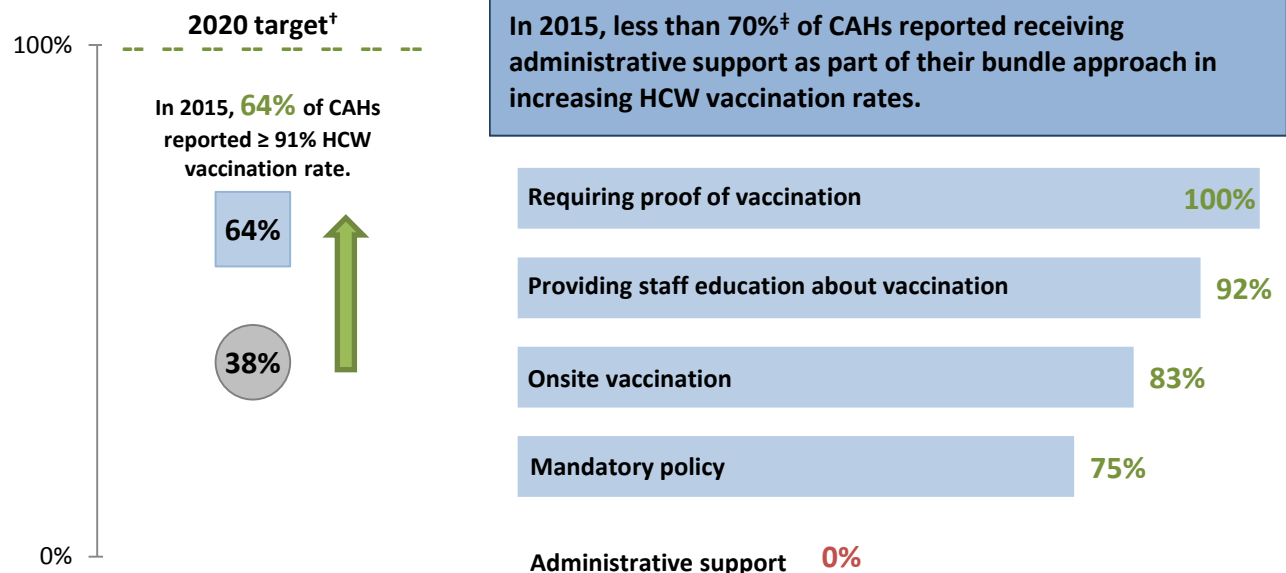
HCW influenza vaccination rates **decreased** from 2014 ● to 2015 ■ .



# CAH (Critical access hospitals)

- 2015 participation rate: 80% (n=12)
- 2014 participation rate: 53% (n=8)

HCW influenza vaccination rates **increased** from 2014 ● to 2015 ■ .



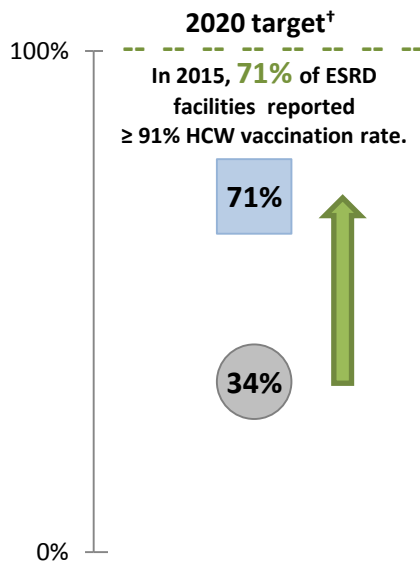
<sup>†</sup>Healthy People 2020 target: 100% of facilities reporting  $\geq 91\%$  of HCWs vaccinated against influenza

<sup>‡</sup> Refer to the methods section for more information on defining vaccination strategies for future focus.

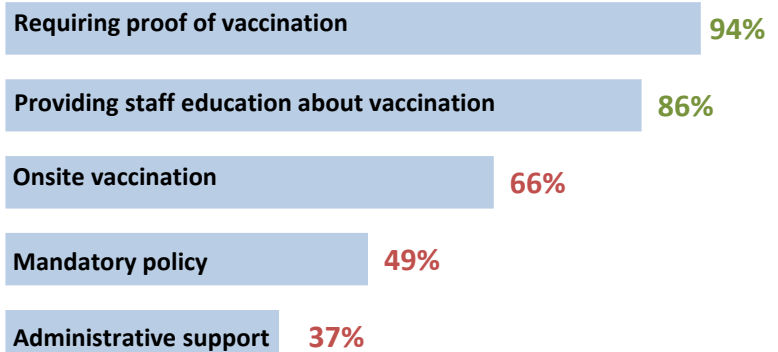
# ESRD (End stage renal disease facilities)

- 2015 participation rate: 30% (n=35)
- 2014 participation rate: 29% (n=34)

HCW influenza vaccination rates **increased** from 2014 ● to 2015 ■.



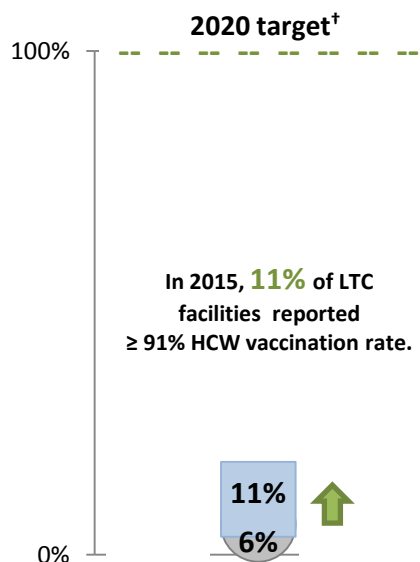
In 2015, less than 70%<sup>‡</sup> of ESRD facilities reported implementing onsite vaccination, mandatory policies, and administrative support as part of their bundle approach in increasing HCW vaccination rates.



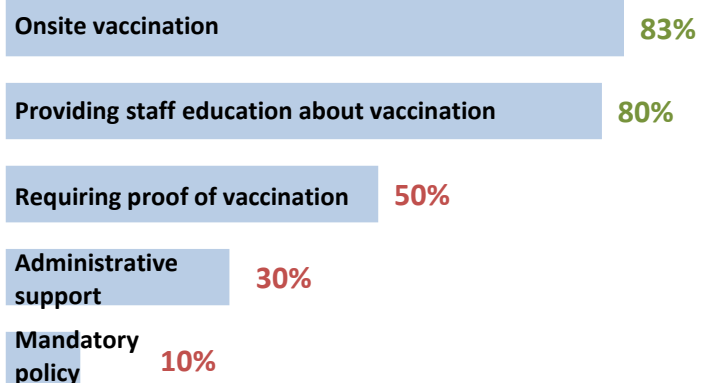
# LTC (Long term care facilities)

- 2015 participation rate: 20% (n=30)
- 2014 participation rate: 11% (n=21)

HCW influenza vaccination rates **increased** from 2014 ● to 2015 ■.



In 2015, less than 70%<sup>‡</sup> of LTC facilities reported requiring proof of vaccination, receiving administrative support, and implementing mandatory policies as part of their bundle approach in increasing HCW vaccination rates.



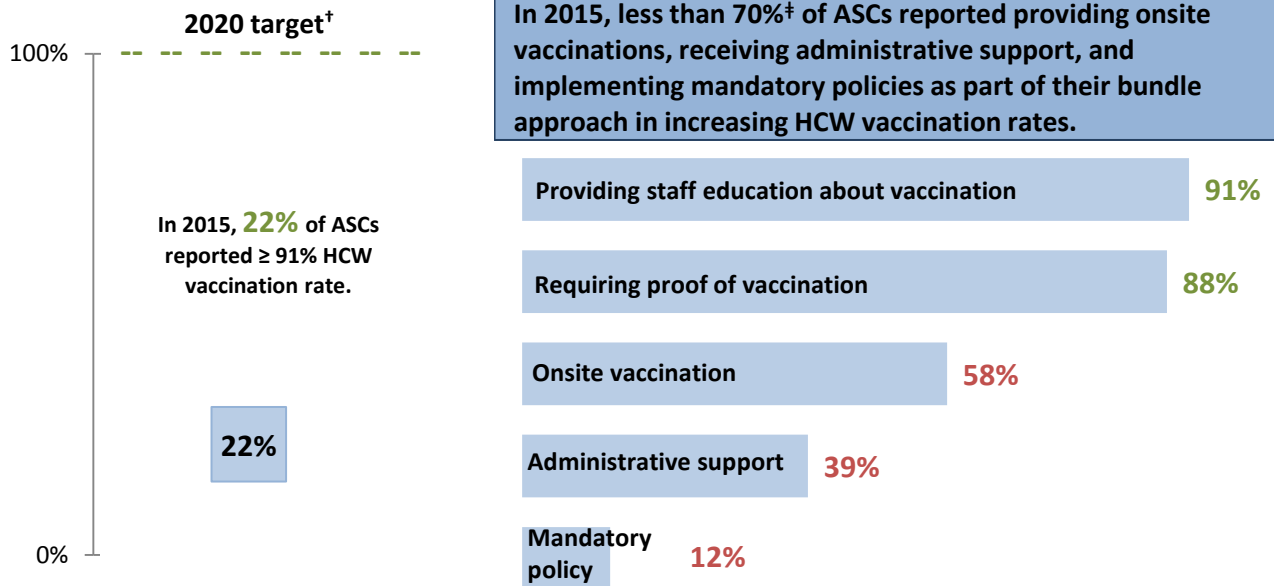
<sup>†</sup>Healthy People 2020 target: 100% of facilities reporting ≥91% of HCWs vaccinated against influenza

<sup>‡</sup> Refer to the methods section for more information on defining vaccination strategies for future focus.

# ASC (Ambulatory surgical centers)

■ 2015 participation rate: 43% (n=33)  
● 2014 No data available

2015 ■ was the first year ASCs participated in this survey.



<sup>†</sup>Healthy People 2020 target: 100% of facilities reporting  $\geq 91\%$  of HCWs vaccinated against influenza

<sup>‡</sup> Refer to the methods section for more information on defining vaccination strategies for future focus.

## KEY FINDINGS

- In 2015, **fewer than 40%** of all responding facilities reported achieving the **90% or greater HCW seasonal influenza vaccination** target set by Healthy People 2020.
- Healthcare facilities that implemented a multi-faceted approach of **mandatory vaccination policies, requiring proof of vaccination, and offering on-site vaccinations** reported **higher HCW influenza vaccination rates**.
- **One-third** of facilities reported receiving **administrative support** for implementing mandatory vaccination programs.

## SURVEY LIMITATIONS

Findings may not be representative of all facilities in Arizona due to:

- a 30% survey response rate
- a decrease in acute care hospital participation
- self-reported data
- possible duplicate responses from multiple staff at the same facility

The HAI program, in conjunction with [professional medical societies](#), and the CDC supports the implementation of mandatory influenza vaccination programs to reach 90% HCW vaccination rates. Additional guidance about vaccination campaigns and resources can be found in the ADHS toolkit.