

# ArboAZ

Arizona Mosquito Activity  
January 1–December 31, 2016



This update is to provide information about vector mosquitoes and mosquito-borne diseases in Arizona. All data is collected by local partners and submitted to ADHS. Trap locations are mapped by GPS coordinates.

Data is reported by mosquito pools. When mosquitoes are collected from a surveillance trap they are divided by species, with one pool counted per species. (Example: if one trap collects 10 mosquitoes, with 3 *Aedes vexans* and 7 *Culex quinquefasciatus*, this would be reported as 2 mosquito pools).

Please contact the Vector-borne and Zoonotic Disease Program at [vbzd@azdhs.gov](mailto:vbzd@azdhs.gov) with any questions or comments.

**Table 1: Total Mosquito Pool Data Submitted to ADHS**

	Number of Mosquito Pools	Mosquito Pools Tested (%)	Pools Positive for any Arbovirus (%)
<b>Total</b>	62,424	24,454 (39.5%)	141 (0.58%)*

\*Percent positive out of the total number of pools tested

**Figure 1** indicates all locations reporting mosquito surveillance.

**Table 2: Mosquito profile for West Nile virus & St. Louis encephalitis virus**

	West Nile Virus Test Results		St. Louis Encephalitis Virus Test Results	
	Number of Positive Pools (%)	Number of Pools Tested	Number of Positive Pools (%)	Number of Pools Tested
<b>Total Pools</b>	<b>133 (1.06%)</b>	<b>12,612</b>	<b>7 (0.07%)</b>	<b>10,617</b>
<i>Culex quinquefasciatus</i>	80 (0.86%)	9,257	0 (0%)	8,332
<i>Culex erythrothorax</i>	0 (0%)	84	0 (0%)	18
<i>Culex tarsalis</i>	50 (1.59%)	3,148	7 (0.32%)	2,222
<i>Culex</i> species not otherwise specified	3 (2.44%)	123	0 (0%)	45
<b>Counties and tribes reporting positive mosquitoes</b>	Maricopa, Pinal, Colorado River Indian Community, Ft. McDowell Yavapai Nation		Yuma	

**Figure 2** shows positive WNV and SLEV mosquito pool locations.

**Table 3: Mosquito profile for dengue, chikungunya and zika virus**

	Dengue Virus Test Results		Chikungunya Virus Test Results		Zika Virus Test Results	
	Positive Pools (%)	Pools Tested	Positive Pools (%)	Pools Tested	Positive Pools (%)	Pools Tested
<b>Total Pools</b>	<b>0 (0%)</b>	<b>248</b>	<b>0 (0%)</b>	<b>229</b>	<b>0 (0%)</b>	<b>232</b>
<i>Aedes aegypti</i>	0 (0%)	248	0 (0%)	229	0 (0%)	232
<i>Aedes albopictus</i>	0 (0%)	0	0 (0%)	0	0 (0%)	0
<b>Counties and tribes reporting positive mosquitoes</b>	None		None		None	

**Table 4: *Aedes aegypti* and *Aedes albopictus* vector profile**

	<i>Aedes aegypti</i>	<i>Aedes albopictus</i>
<b>Total identified pools in Arizona, by species</b>	7,756	0
<b>Counties and tribes reporting pools, by species</b>	Cochise, Graham, Greenlee, Maricopa, San Calos Apache Tribe, Pinal, Pima, Santa Cruz Yavapai and Yuma	None

Figures 3, 4, and 5 show all trap locations where *Aedes aegypti* have been reported against human case rates for related diseases.

### Human Arboviral Case Counts

For human WNV cases see [WNV stats](#)

For human SLE cases see [SLE stats](#)

For human Dengue cases see [Dengue stats](#)

For human Chikungunya cases see [CHK stats](#)

For human Zika cases see [Zika stats](#)

**Figure 2** West Nile Virus human case rates\*, by county

**Figure 3** Dengue human case rates\*, by county

**Figure 4** Chikungunya human case rates\*, by county

**Figure 5** Zika virus human case rates\*, by county

\*Rates may appear unstable for counties with small population denominators.

Figure 1

### Mosquito Surveillance Pools (n=62,424) January 1 - December 31, 2016

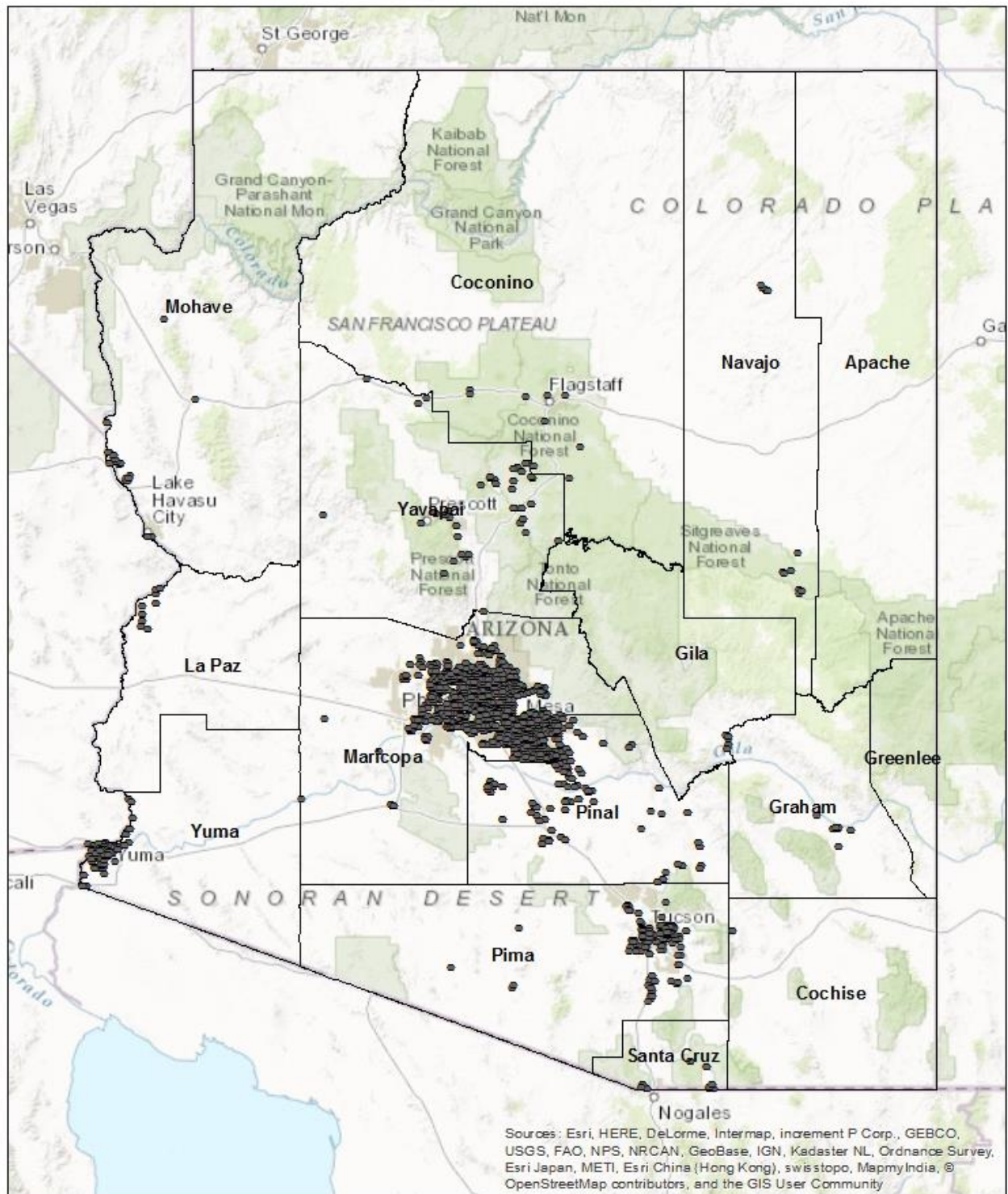




Figure 2

**WNV & SLE Positive Mosquito Pools  
& Human WNV Case Rates, by County**

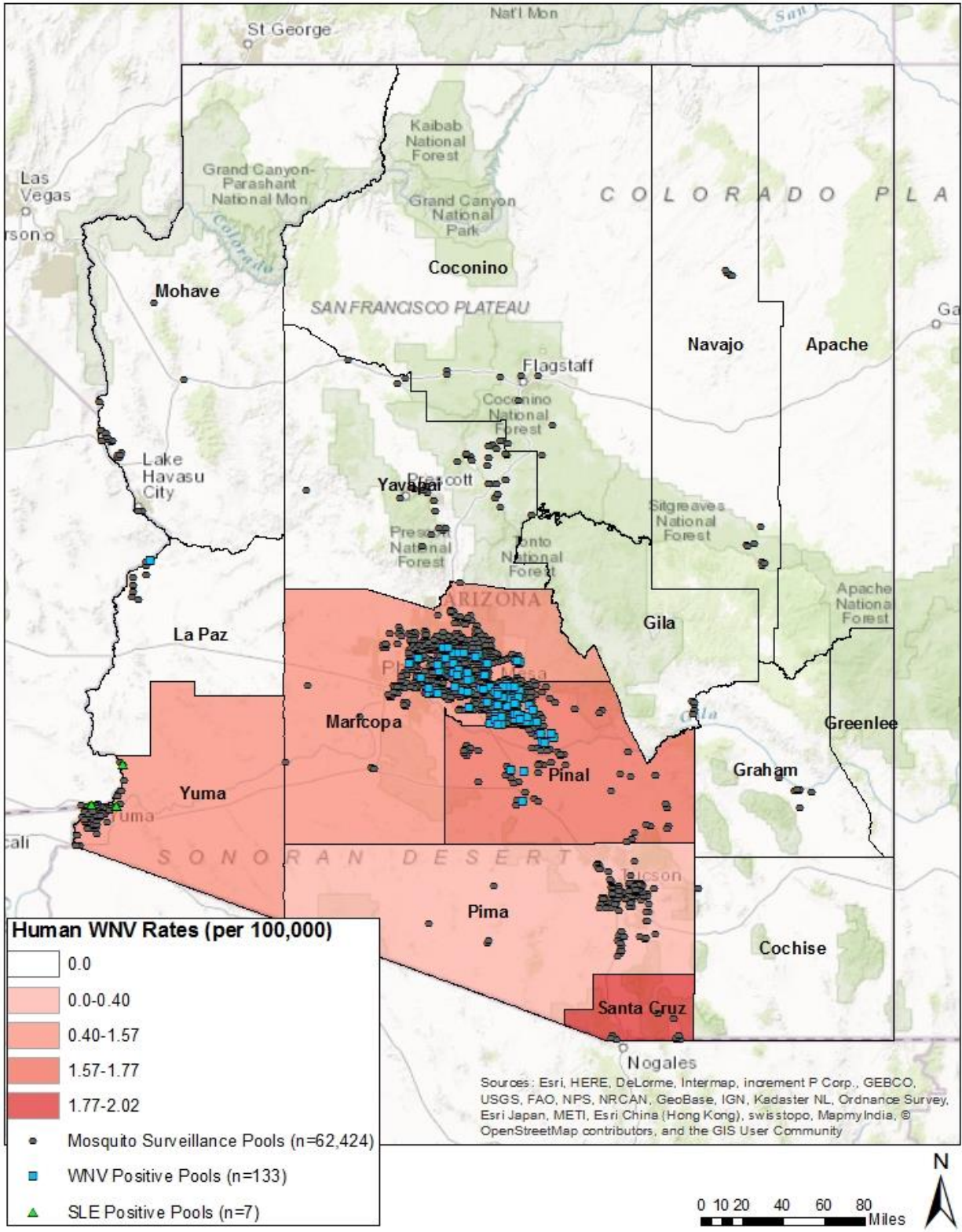


Figure 3

**Aedes aegypti Mosquito Pools (n=7,756) & Human Dengue Case Rates, by County**

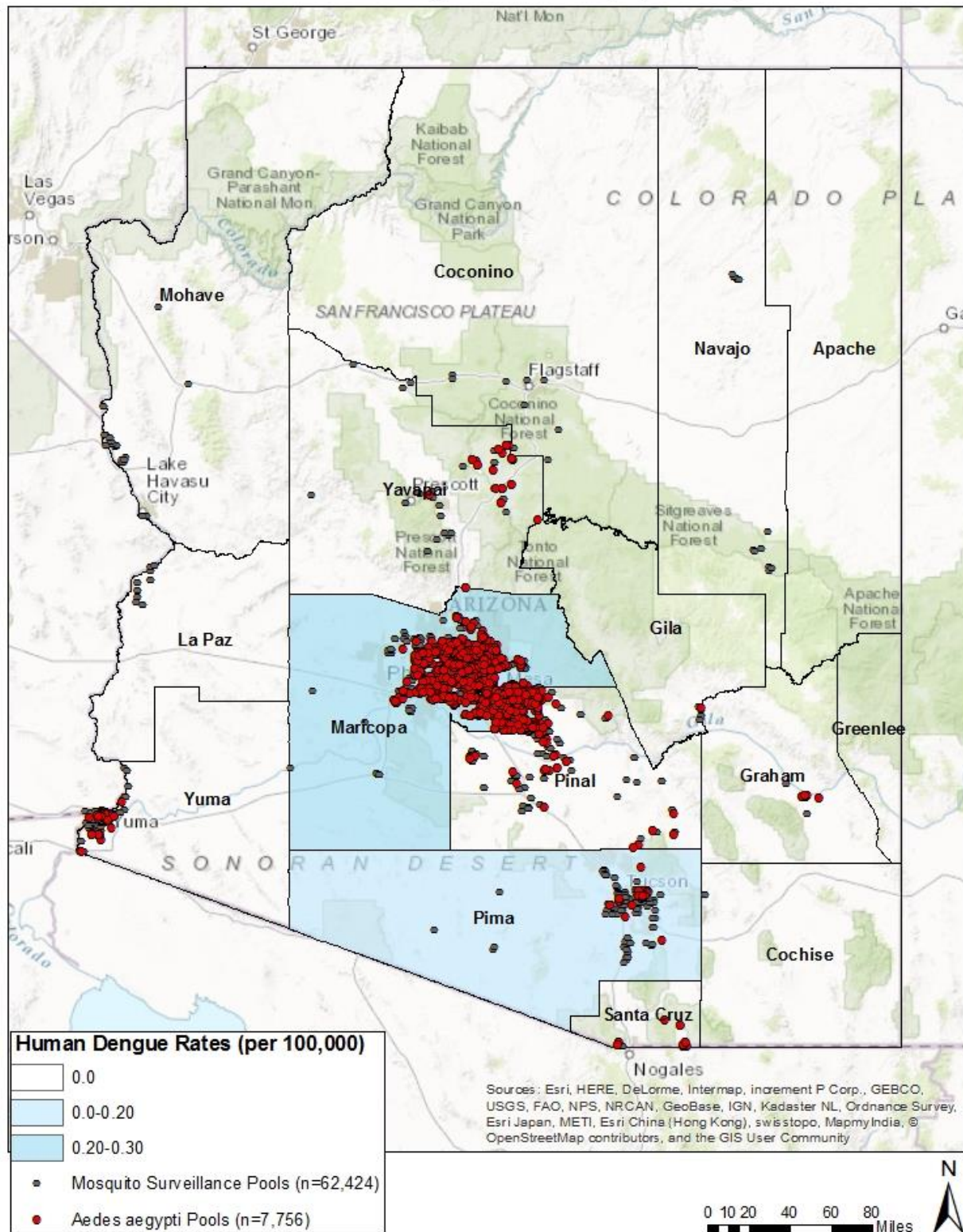




Figure 4

**Aedes aegypti Mosquito Pools (n=7,756)  
& Human Chikungunya Case Rates, by County**

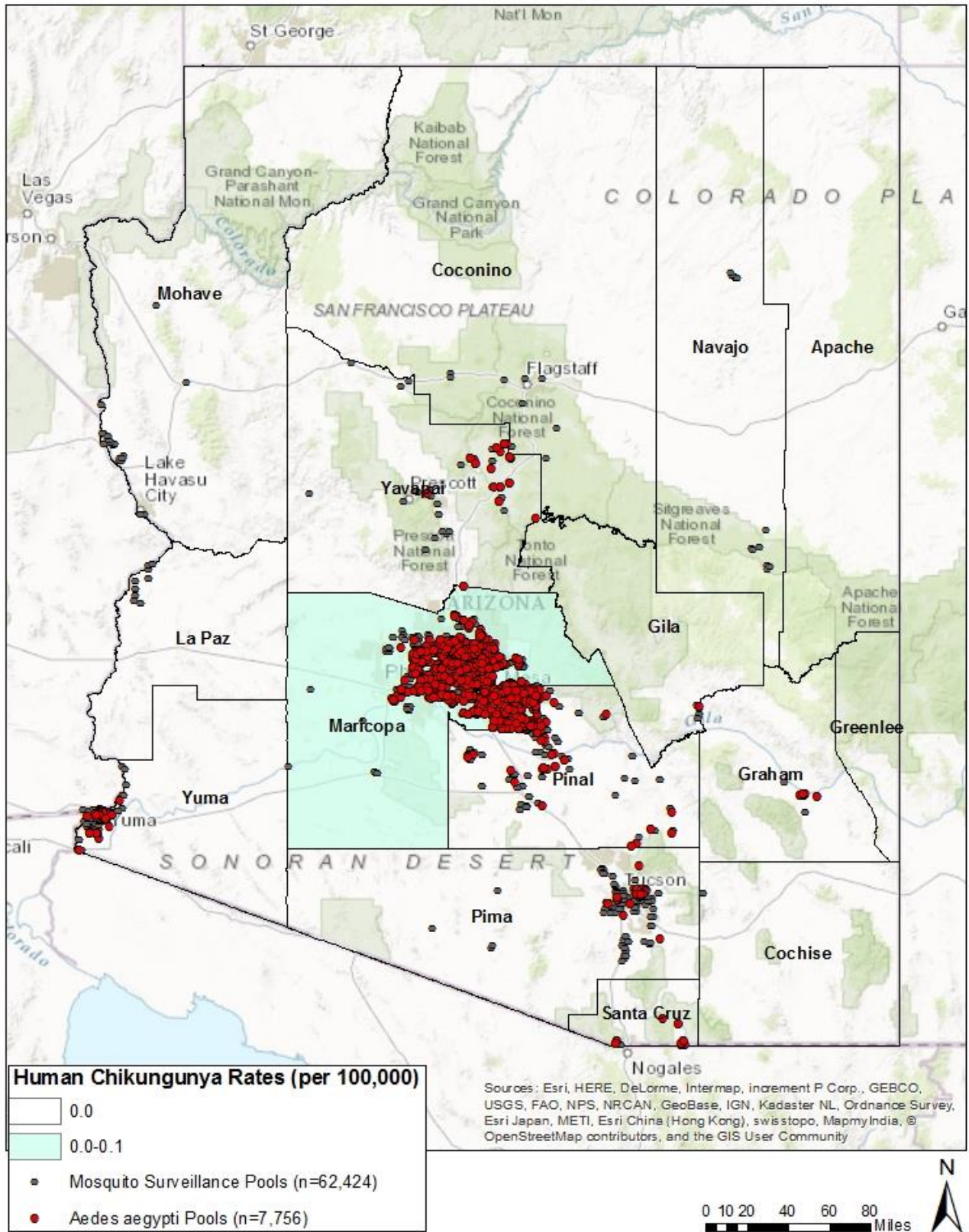


Figure 5

**Aedes aegypti Mosquito Pools (n=7,756)  
& Human Zika Case Rates, by County**

