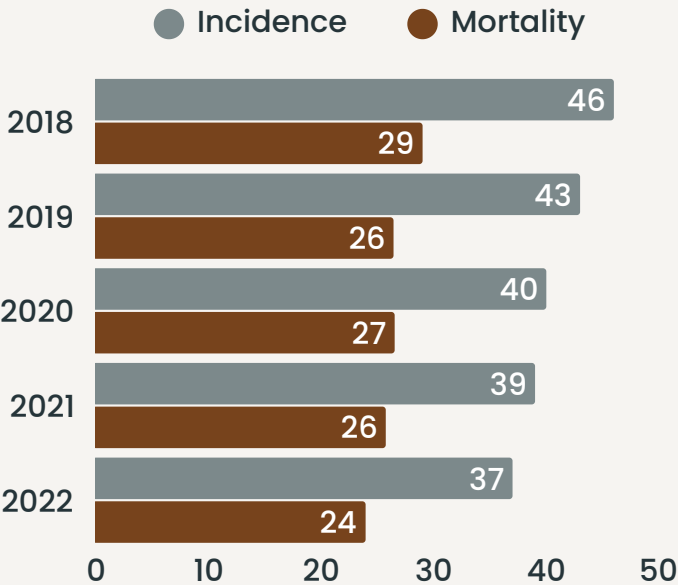


Lung cancer is the second most common cancer diagnosis in Arizona.

Each year in Arizona, an average of
4,033
new lung cancer cases are diagnosed, and
2,515
people die from lung cancer.

Lung cancer is the
#1
leading cause of cancer death in Arizona.

Age-Adjusted Rate of New Cases and Deaths by Year per 100,000 Arizonans

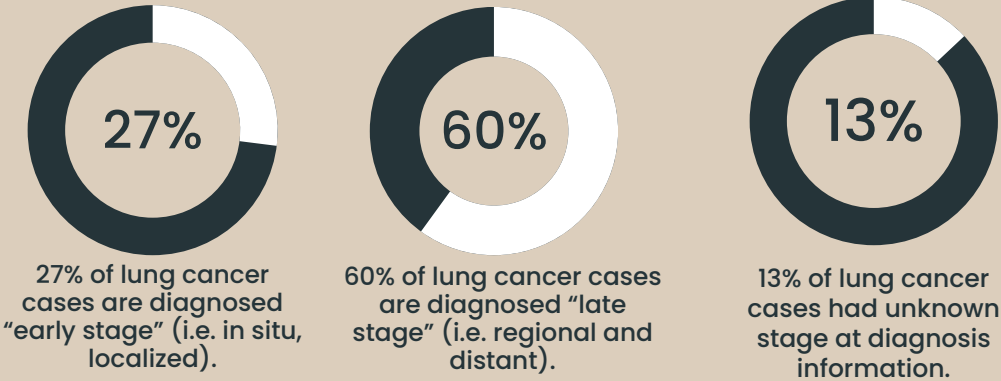


The 5-year relative survival for Arizonans of all races*

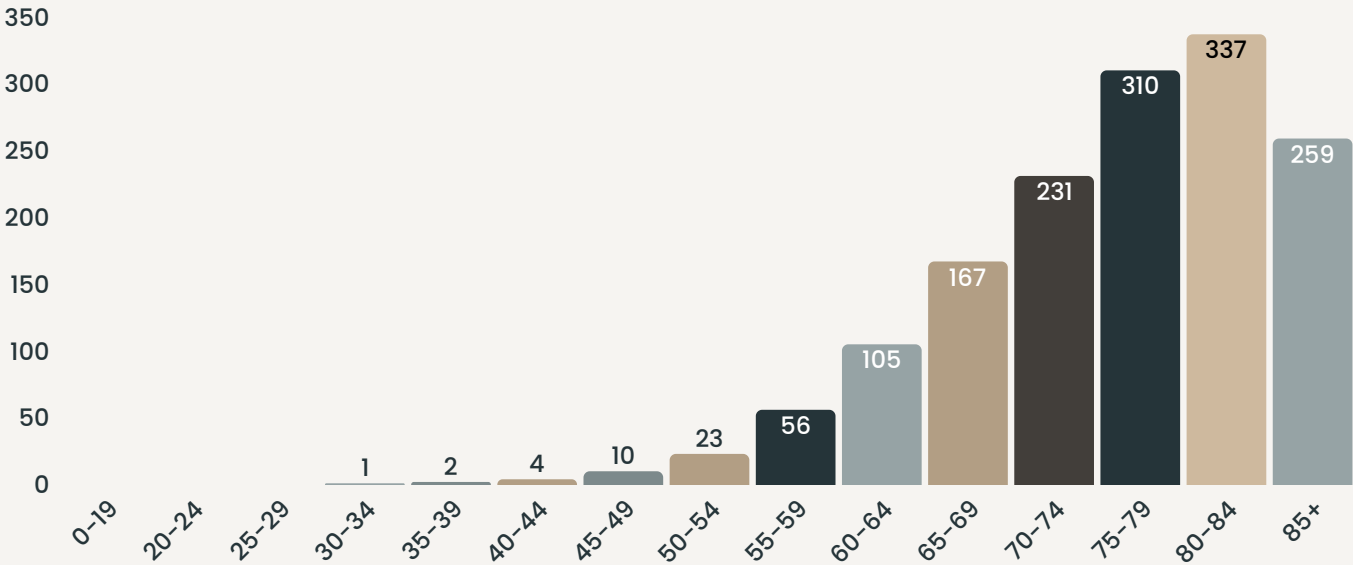
26%

STAGE AT DIAGNOSIS: 2018-2022

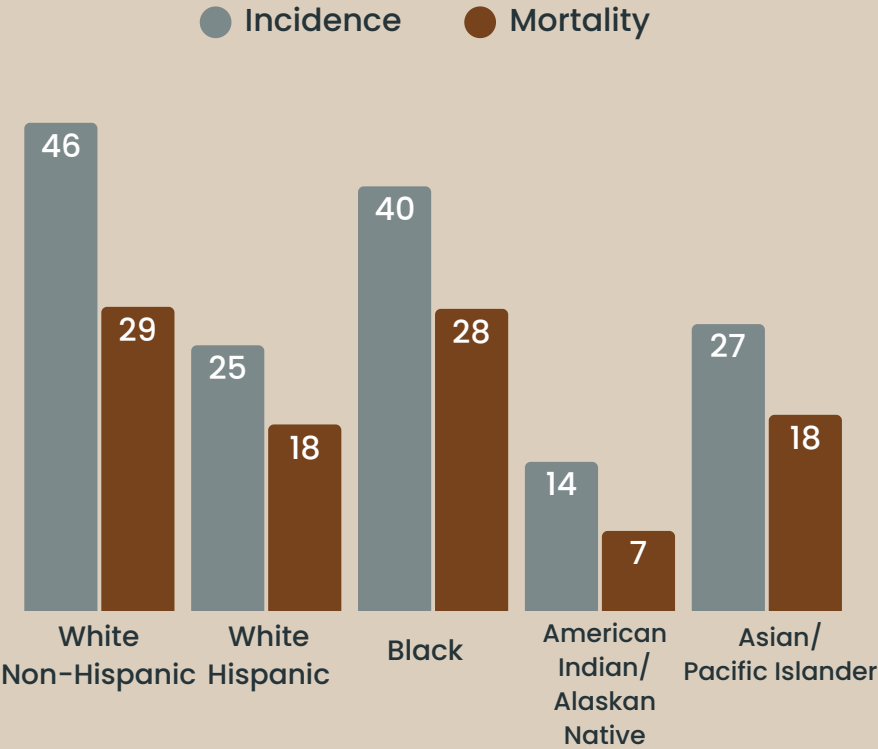
Individuals who have a high risk of lung cancer should consult with their doctors about lung cancer screening with a low-dose CT scan.



AGE-SPECIFIC RATE OF LUNG CANCER BY AGE GROUP, 2018-2022



Age-Adjusted Rate of New Cases and Deaths by Race/Ethnicity per 100,000 Arizonans



ASHLine: QUIT TOBACCO YOUR WAY.

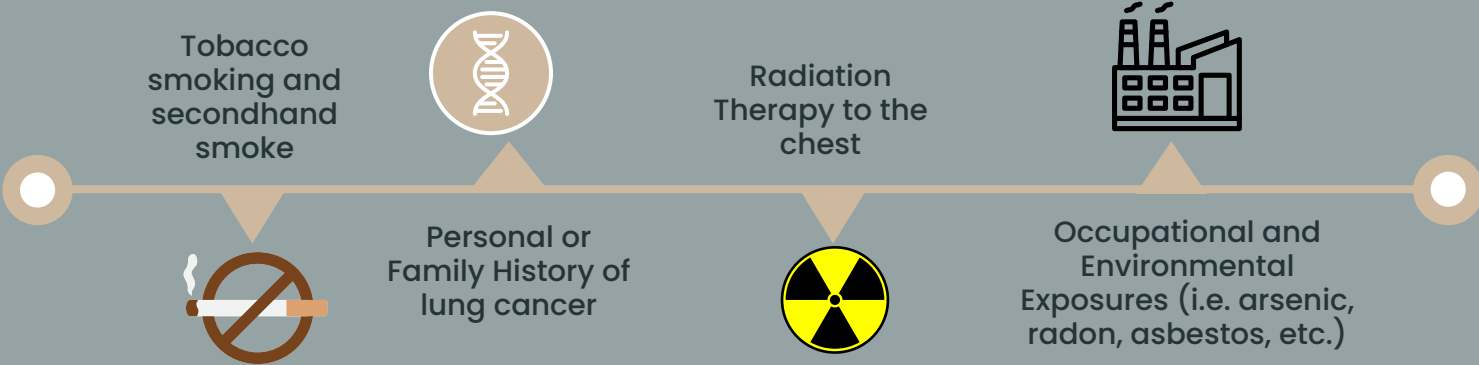
Smoking causes 80-90% of lung cancer deaths.

ASHLine offers personalized coaching and programs to help you, or someone you love, find a path to quit smoking.

No matter who you are or what tobacco product you use, ASHLine coaches understand your struggle and want to help you quit.

[Click HERE to learn more about ASHLine!](#)

RISK FACTORS**



All graphs represent invasive cases with the exception of stage at diagnosis, early stage includes in situ cases. The COVID-19 pandemic disrupted health services, leading to delays and reductions in cancer screenings and diagnoses. This may have contributed to the decline in new cancer cases for many sites in 2020. The numbers of new cases diagnosed in 2021 are still a little lower than expected for some cancer types but have returned to pre-pandemic counts for other cancer types. Arizona Cancer Registry (ACR) is supported by Cooperative Agreement Number, NU58DP007089, funded by the Centers for Disease Control and Prevention, National Program of Cancer Registries. Its contents are solely the responsibility of the authors and do not necessarily represent the official views of the Centers for Disease Control and Prevention or the Department of Health and Human Services. Sources: Arizona Cancer Registry, 04/18/2025; Population Health and Vital Statistics, 04/04/2025. *U.S. Cancer Statistics Working Group. U.S. Cancer Statistics Data Visualizations Tool. U.S. Department of Health and Human Services, Centers for Disease Control and Prevention and National Cancer Institute; <https://www.cdc.gov/cancer/dataviz>, released in June 2024. **Centers for Disease Control and Prevention. (2025, February 13). Lung Cancer Risk Factors | Lung Cancer. CDC. Retrieved April 30, 2025, from <https://www.cdc.gov/lung-cancer/risk-factors/index.html>