

PROSTATE CANCER IN ARIZONA

2018-2022
STATS



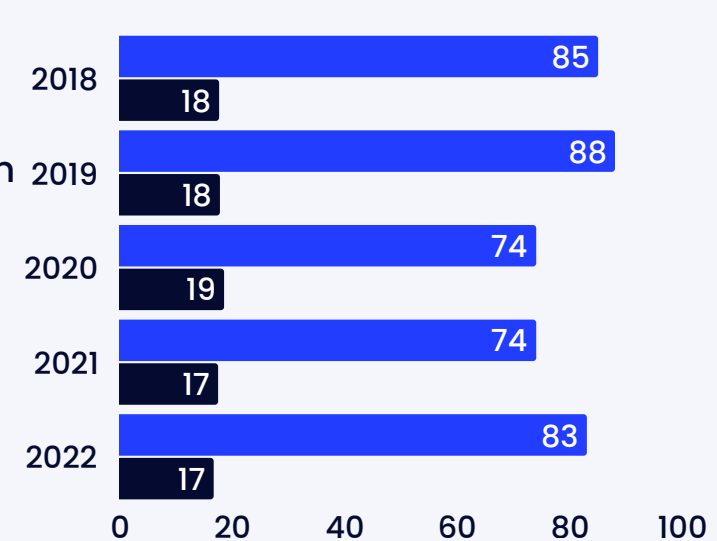
Arizona Cancer Registry

Prostate cancer is the third common cancer diagnosis in Arizona.

Each year in Arizona, an average of **3,842** new invasive prostate cancer cases are diagnosed, and **772** men die from prostate cancer.

Prostate cancer is the **6th** leading cause of cancer death in Arizona.

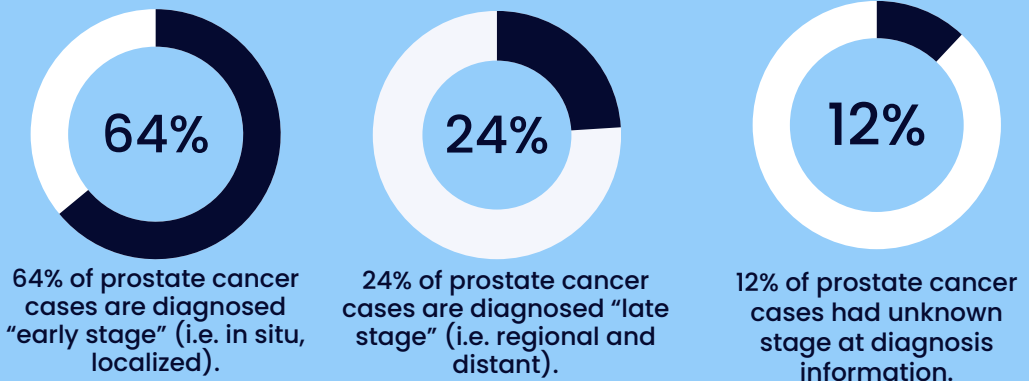
Age-Adjusted Rate of New Cases and Deaths by Year per 100,000 Male Arizonans



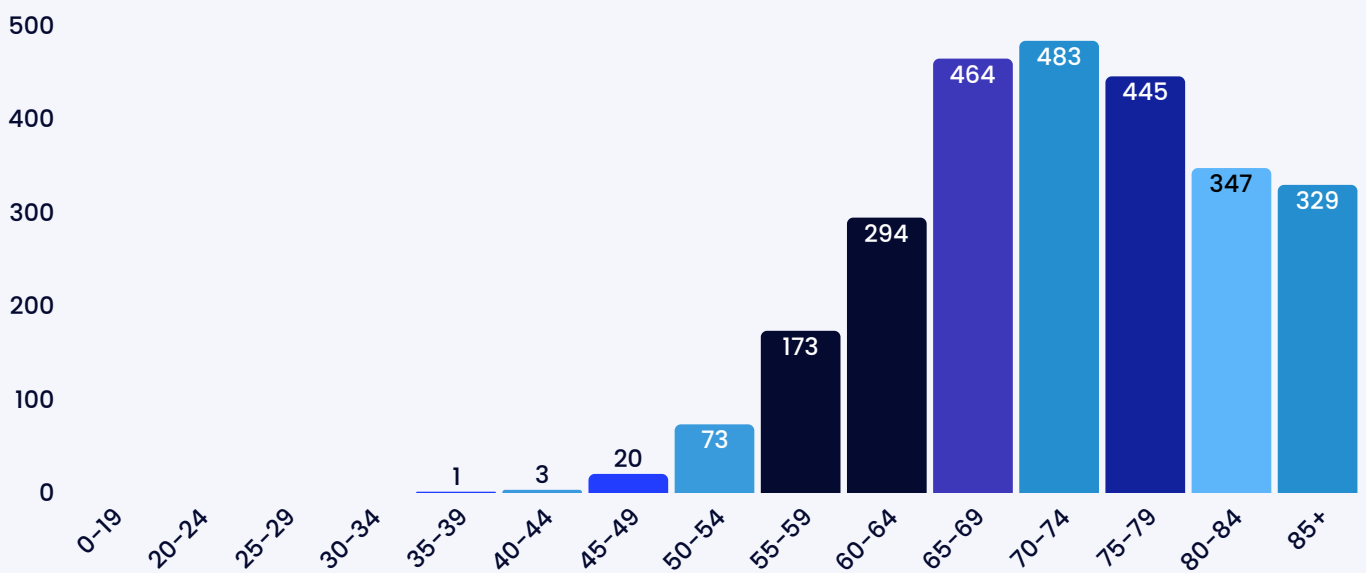
The 5-year relative survival for Arizona men of all races* **93%**

STAGE AT DIAGNOSIS: 2018-2022

Men who are **55-69 years old** should make individual decisions with their doctor about being screened for prostate cancer with a prostate specific antigen (PSA) test.

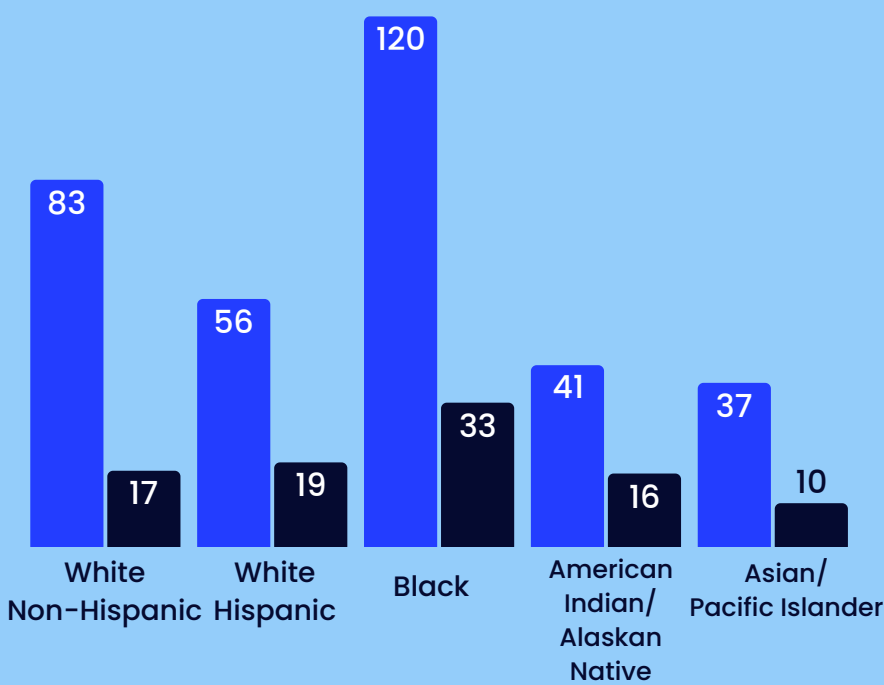


AGE-SPECIFIC RATE OF PROSTATE CANCER BY AGE GROUP, 2018-2022



Age-Adjusted Rate of New Cases and Deaths by Race/Ethnicity per 100,000 Male Arizonans

● Incidence ● Mortality



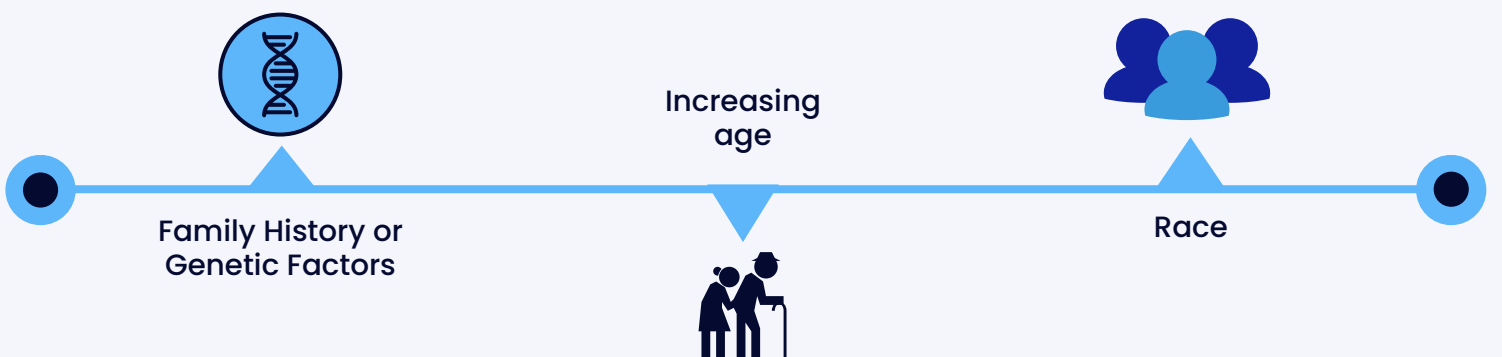
ARIZONA CANCER PLAN: LATE STAGE PROSTATE CANCER

The 2024-2029 Arizona Cancer Control Plan is the state's five-year strategy to fight against cancer and reduce the cancer burden.

The plan includes an objective to decrease the percentage of late stage prostate cancer diagnosis among Arizonans.

[Click HERE to view the Arizona Cancer Control Plan!](#)

RISK FACTORS **



All graphs represent invasive cases with the exception of stage at diagnosis, early stage includes in situ cases. The COVID-19 pandemic disrupted health services, leading to delays and reductions in cancer screenings and diagnoses. This may have contributed to the decline in new cancer cases for many sites in 2020. The numbers of new cases diagnosed in 2021 are still a little lower than expected for some cancer types but have returned to pre-pandemic counts for other cancer types. Arizona Cancer Registry (ACR) is supported by Cooperative Agreement Number, NU58DP007089, funded by the Centers for Disease Control and Prevention, National Program of Cancer Registries. Its contents are solely the responsibility of the authors and do not necessarily represent the official views of the Centers for Disease Control and Prevention or the Department of Health and Human Services. Sources: Arizona Cancer Registry, 04/18/2025; Population Health and Vital Statistics, 04/04/2025. *U.S. Cancer Statistics Working Group. U.S. Cancer Statistics Data Visualizations Tool. U.S. Department of Health and Human Services, Centers for Disease Control and Prevention and National Cancer Institute; <https://www.cdc.gov/cancer/dataviz>, released in June 2024. **Centers for Disease Control and Prevention. (2024, August 27). Prostate Cancer Risk Factors | Prostate Cancer. CDC. Retrieved April 30, 2025, from <https://www.cdc.gov/prostate-cancer/risk-factors/index.html>