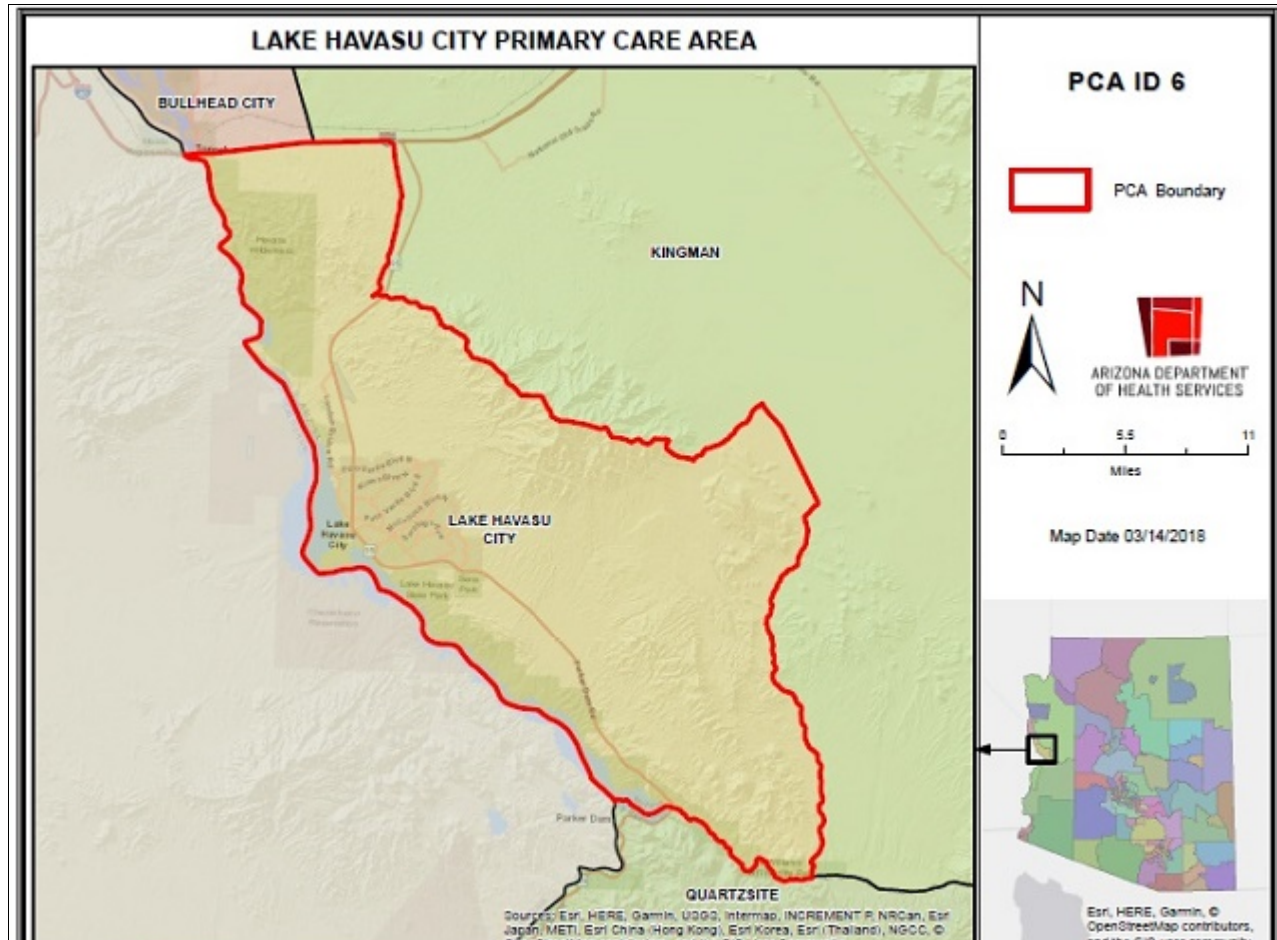


Lake Havasu City Primary Care Area (PCA) 2021 STATISTICAL PROFILE

For definitions and sources of data used in these profiles, see:

<http://www.azdhs.gov/documents/prevention/health-systems-development/data-reports-maps/reports/datadocu.pdf>

DESCRIPTION OF AREA	PCA Number	6
	Major Population Center	Lake Havasu City
	County	MOHAVE
	Health Planning Region	4
	Primary Care Score	24
	Rural Code Designation:	RURAL
	Special Tax District?	No
	State House Legislative District	30
	Designated as AzMUA?	Yes
	Designated as Primary Care HPSA	P Low Inc., (Lake Havasu City)
	Designated as Federal MUA/P	48.10, MUP, (Lake Havasu City)
	Next Nearest Provider	Topock
	2nd Nearest Provider	Parker
	Travel Distance to Next Nearest Provider	34.5 miles
	Travel Distance to 2nd Nearest Provider...	38.73 miles



DEMOGRAPHICS	Lake Havasu City	COUNTY	HEALTH PLANNING REGION	ARIZONA
POPULATION	61,562	216,527	440,665	7,285,370
Population Density	153.9	16.1	18.8	63.9
Persons By Age				
0-14	6,750	29,975	78,126	1,384,121
15-19	3,341	9,893	25,929	485,151
20-44	13,181	50,744	126,554	2,400,824
45-64	16,291	58,043	105,223	1,745,588
65-84	17,831	59,074	103,135	1,142,268
85 +	1,985	5,694	10,812	139,201
Race/Ethnicity				
White	91.5%	89.2%	80.5%	75.8%
American Indian	1.0%	2.1%	2.3%	4.0%
Black	0.7%	1.0%	1.4%	4.2%
Asian/Pacific Islander	1.0%	1.2%	1.2%	3.1%
Other	5.8%	6.5%	14.6%	12.9%
Hispanic	13.5%	15.8%	38.8%	30.5%
Communities of Color	20.3%	24.9%	46.9%	46.6%
Gender				
Females	50.3%	49.5%	49.0%	50.3%
Males	49.7%	50.5%	51.0%	49.7%
Single Parent Families	17.8%	24.6%	25.7%	26.9%
Female Headed Households	23.8%	25.8%	25.5%	26.4%
Disability Population	18.3%	22.1%	17.8%	13.2%
Speak Other Than English at Home	10.8%	10.5%	31.4%	26.7%
INCOME				
Population below 100% FPL	11.1%	16.1%	17.4%	14.1%
Population below 200% FPL	31.3%	37.8%	41.5%	33.0%
Median Household Income	\$53,990	\$43,994	\$45,335	\$62,115
Children <12 in Poverty	19.7%	27.0%	27.6%	20.7%
EDUCATION				
Less Than 9th Grade Education	8.2%	3.7%	8.0%	5.0%
9th-12th Grade, No Diploma	2.0%	9.6%	10.8%	7.0%
High School Graduate	32.5%	34.3%	30.9%	23.8%
Some College	30.7%	29.6%	27.5%	24.9%
College or Professional Degree Holder	26.4%	22.4%	22.5%	39.1%
MISCELLANEOUS				
Overnight Tourist Visits	993,702	3,491,129	7,099,748	49,599,807
Unemployed	12.8%	16.9%	16.5%	10.0%
"Uninsured" Births	1.2%	1.9%	2.3%	2.3%
Medicare Beneficiaries	97.4%	98.0%	96.3%	96.3%
Medically Uninsured	8.8%	9.3%	11.0%	10.6%
Transportation Score	99	115	126	113

RESOURCES	Lake Havasu City	COUNTY	HEALTH PLANNING REGION	ARIZONA
FACILITIES				
General Hospitals	Yes	4	6	71
Hospital Beds/1000 Residents	2.5	2.8	2.4	1.9
Designated as Sole Community Provider?	Yes	2	4	56
Specialty Beds	0	42	93	3,645
Skilled Nursing Facilities	0	1	4	102
Nursing Beds	0	88	392	11,632
SERVICES				
Licensed Home Health Agencies	3	9	14	179
Ambulatory Care Sites Type	A, C, D, E	A, B, C, D, E	A, B, C, D, E	A,B,C,D,E
Licensed Pharmacies	12	42	76	1,332
Certified Ambulance Services	1	8	14	106
PERSONNEL				
Primary Care Providers	75.0	287	497	9,751
Ratio-Population:Provider	821 :1	754:1	887 :1	747 :1
Nurse Practitioners	103	397	601	9,932
Physician Assistants	22	59	115	3,049
Registered Nurses	676	2,040	3,698	80,111
Midwives	1	5	16	312
Dentists	22	79	130	4,325
UTILIZATION				
AMBULATORY CARE SENSITIVE CONDITIONS				
ACSs/1000 Residents Age <65	39.9	58.2	44.3	34.5
Points Above/Below (-) Statewide Average	5.4	23.6	9.7	***
HOSPITALIZATION				
Inpatient Days/1000 Residents	555	584	615	570
Inpatient Days/1000 by Age Group:				
0-14 yrs	244	240	286	320
15-19 yrs	111	180	221	285
20-44 yrs	277	288	318	400
45-64 yrs	494	570	661	611
65-84 yrs	946	1,008	1,089	1,122
85+ yrs	1,794	1,666	1,791	1,815
Leading Diagnosis	Procedure and treatment n			
Leading Procedure	Detoxification Services for Substance Abuse Treatment			
(Non-maternity related)				
*** Not Applicable, ++ Insufficient Data, ## Not Available				

HEALTH STATUS	Lake Havasu City	COUNTY	HEALTH PLANNING REGION	ARIZONA
INFANT MORTALITY RATE	++	5.7	6.1	5.7
MORTALITY, LEADING CAUSE OF DEATH				
Infant	Sudden infant death syndrome			
Child (1-14)	++			
Adolescent (15-19)	Malignant neoplasm of brain			
Young Adult (20-44)	Intentional self-harm by hanging, strangulation and			
Mid Age (45-64)	Chronic ischaemic heart disease			
Elderly (65-84)	Chronic ischaemic heart disease			
Aged (85+)	Chronic ischaemic heart disease			
PERCENT PREMATURE MORTALITY	50.1%	59.5%	58.5%	54.9%
NATALITY				
Fertility Rate/1000 Females 15-44 yrs	49.7	57.1	66.3	61.4
Birth Rate/1000 Residents	6.9	8.2	10.9	11.8
0-4 Prenatal Care Visits/1000 Births	19.0	60.2	101.8	66.5
Prenatal Care Began:				
None	18.1%	7.0%	6.7%	5.6%
Trimester One	71.6%	68.9%	62.2%	70.4%
Trimester Two	7.6%	18.5%	21.3%	18.1%
Trimester Three	2.6%	5.4%	9.5%	5.9%
Unknown	0.1%	0.2%	0.3%	0.0%
Low-weight Births/1000 Live Births	51.9	68.0	63.7	72.8
Teen Births/1000 Females 14-19 yrs	13.6	20.5	25.0	20.2

Area Location IDs:

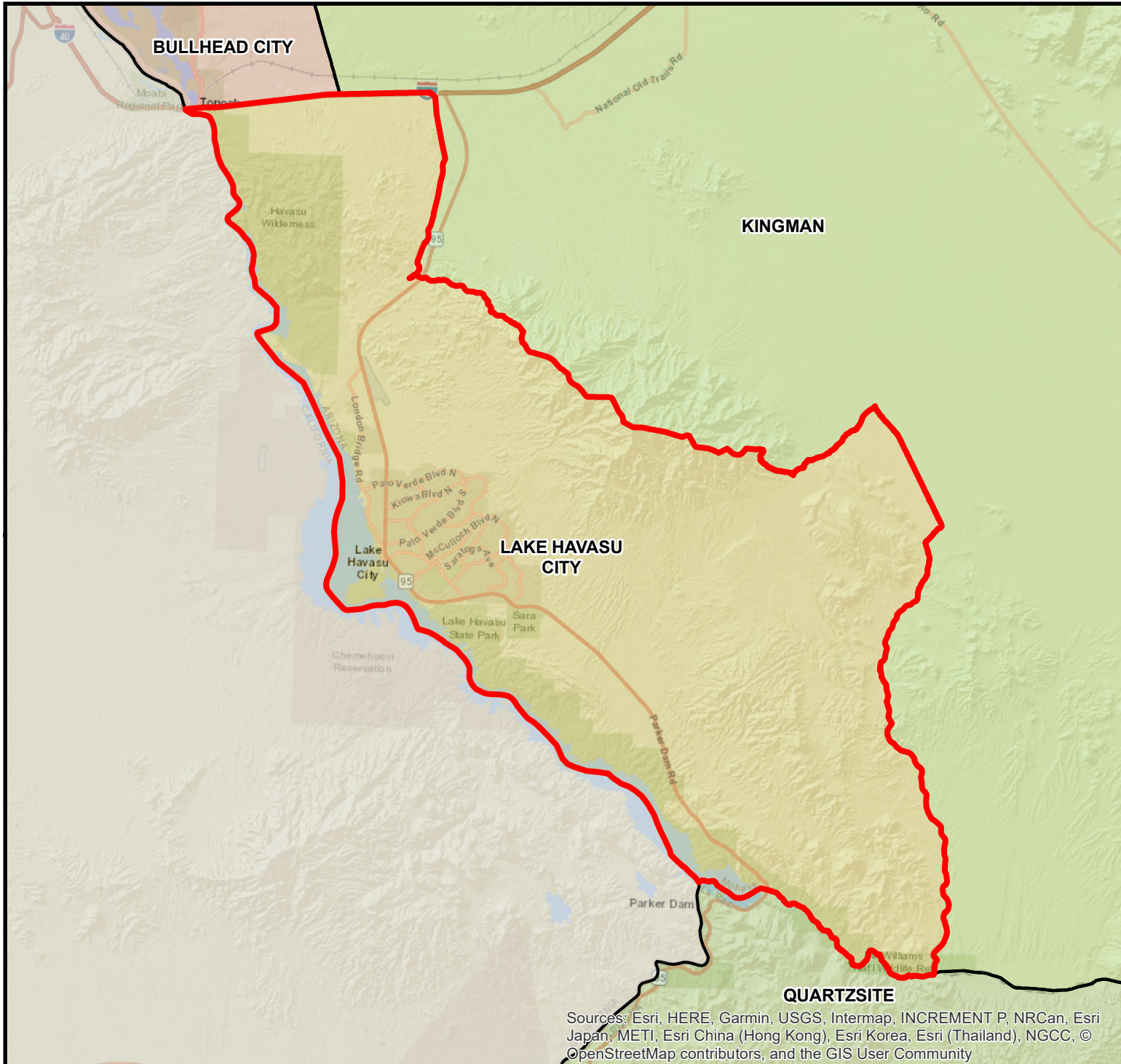
Census Tracts: 040159524.00, 040159525.01, 040159525.02, 040159526.00, 040159527.01, 040159527.02, 040159528.01, 040159528.02, 040159529.01, 040159529.02, 040159530.01, 040159530.02, 040159531.00, 040159532.00, 040159533.01, 040159533.02, 040159534.03, 040159534.04, 040159534.05, 040159534.06

Other Places in area:

Desert Hills, Lake Havasu City

*** Not Applicable, ++ Insufficient Data, ## Not Available

LAKE HAVASU CITY PRIMARY CARE AREA

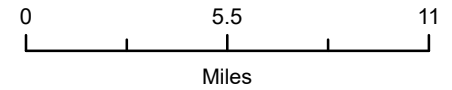


Sources: Esri, HERE, Garmin, USGS, Intermap, INCREMENT P, NRCan, Esri Japan, METI, Esri China (Hong Kong), Esri Korea, Esri (Thailand), NGCC, © OpenStreetMap contributors, and the GIS User Community

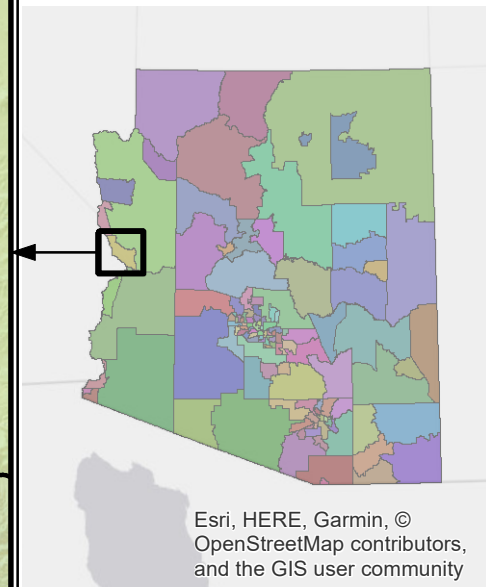
PCA ID 6



ARIZONA DEPARTMENT OF HEALTH SERVICES



Map Date 03/14/2018



Esri, HERE, Garmin, © OpenStreetMap contributors, and the GIS user community