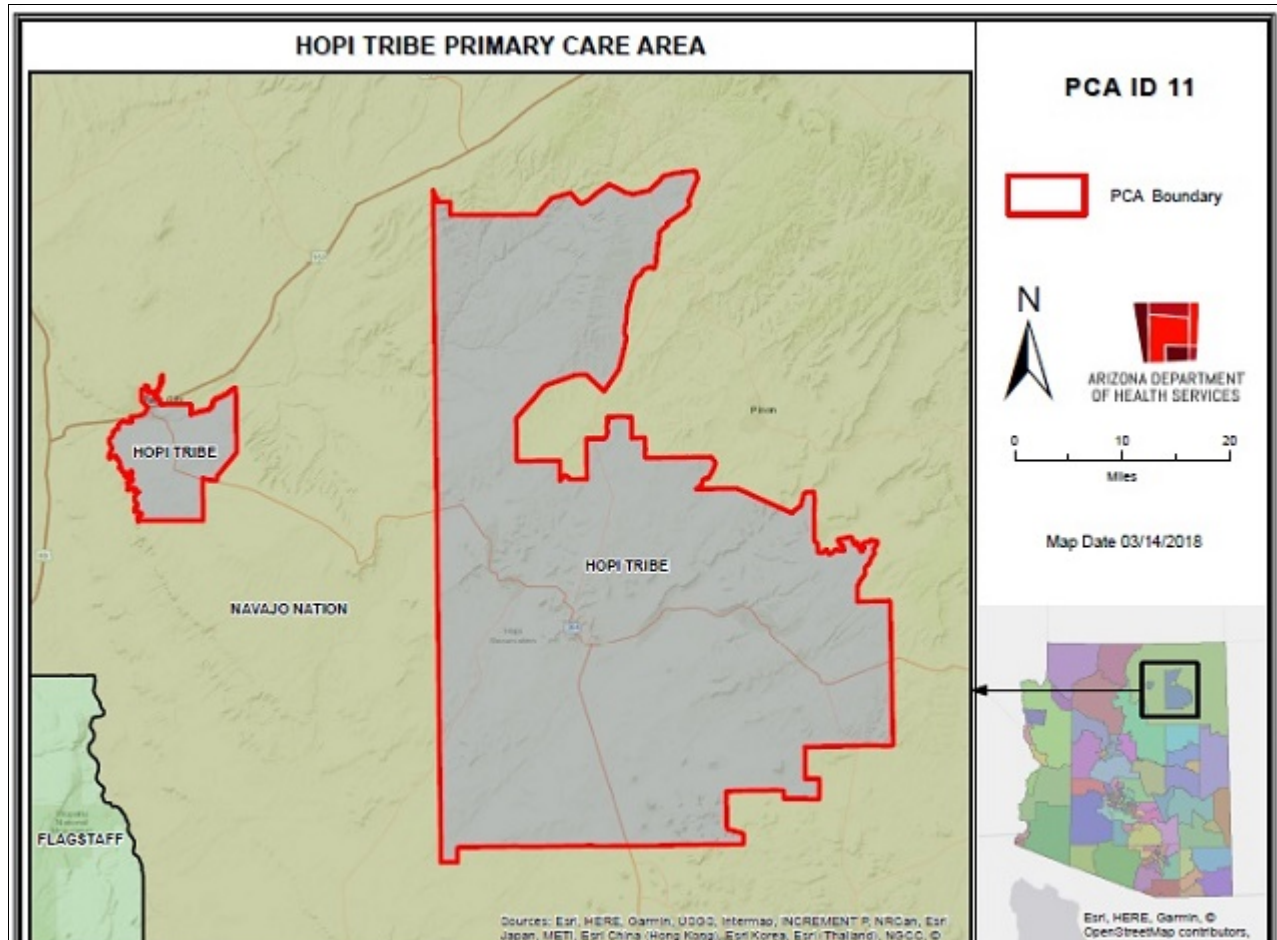


# Hopi Tribe Primary Care Area (PCA) 2021 STATISTICAL PROFILE

For definitions and sources of data used in these profiles, see:

<http://www.azdhs.gov/documents/prevention/health-systems-development/data-reports-maps/reports/datadocu.pdf>

DESCRIPTION OF AREA	PCA Number .....	11
	Major Population Center .....	Tuba City
	County .....	COCONINO, NAVAJO
	Health Planning Region .....	3
	Primary Care Score .....	44
	Rural Code Designation: .....	INDIAN
	Special Tax District? .....	No
	State House Legislative District .....	6
	Designated as AzMUA? .....	Yes
	Designated as Primary Care HPSA .....	Geographic HN, (Hopi Tribe), Geographic HN, (Hualapai Tribe)
	Designated as Federal MUA/P .....	38.10, MUA, (Navajo County), 54.10, MUA, (Tuba City)
	Next Nearest Provider .....	Shonto
	2nd Nearest Provider .....	Polacca
	Travel Distance to Next Nearest Provider	52.33 miles
	Travel Distance to 2nd Nearest Provider...	71.79 miles



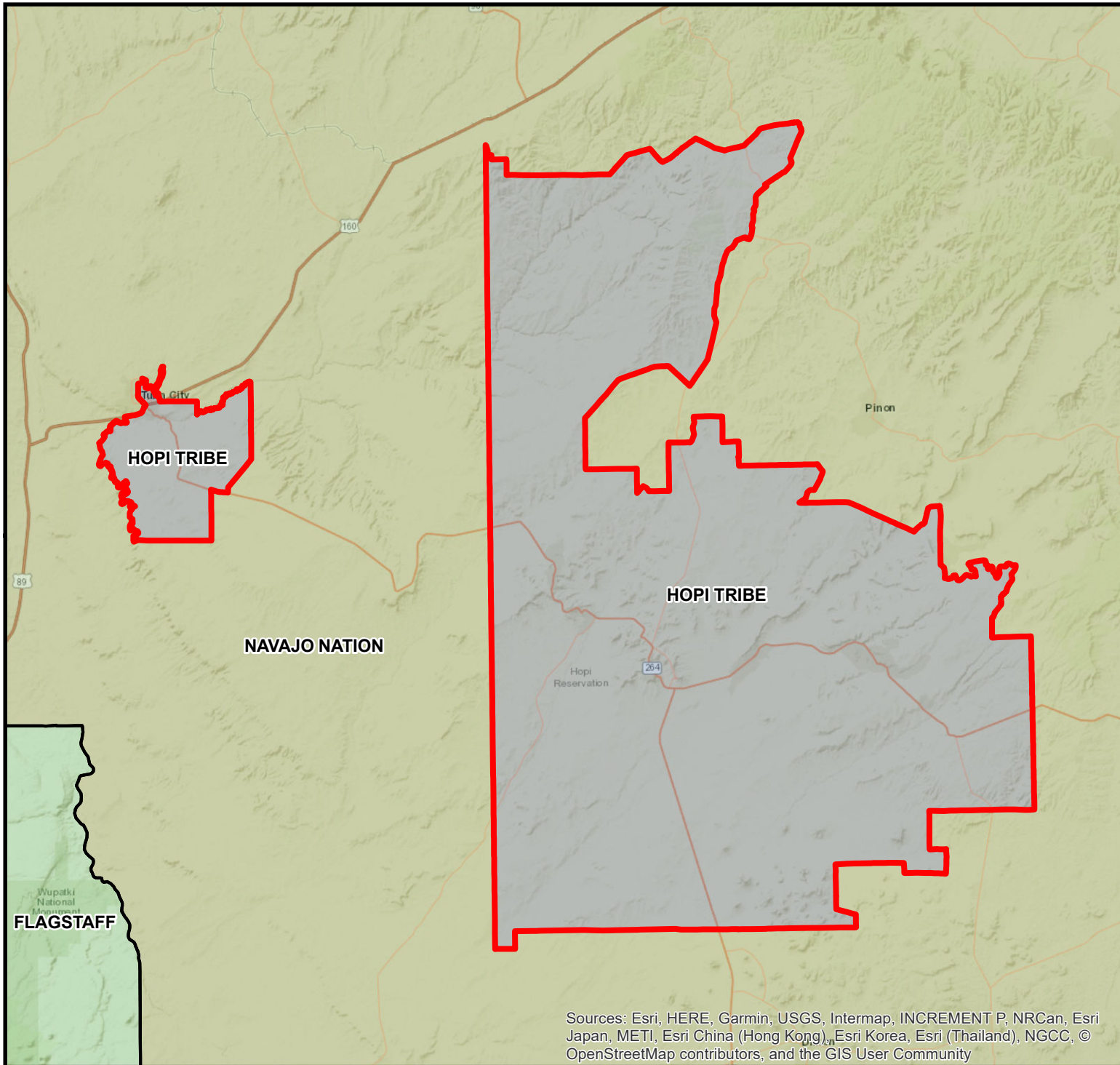
DEMOGRAPHICS	Hopi Tribe	COUNTY	HEALTH PLANNING REGION	ARIZONA
POPULATION .....	10,497	255,182	562,766	7,285,370
Population Density .....	5.8	8.9	11.7	63.9
Persons By Age .....				
0-14 .....	3,521	48,727	96,013	1,384,121
15-19 .....	1,097	24,637	42,014	485,151
20-44 .....	4,983	84,934	159,488	2,400,824
45-64 .....	3,146	58,527	141,909	1,745,588
65-84 .....	1,711	35,274	112,598	1,142,268
85 + .....	126	2,491	10,760	139,201
Race/Ethnicity				
White .....	4.5%	63.7%	69.4%	75.8%
American Indian .....	79.2%	28.8%	21.8%	4.0%
Black .....	0.4%	1.1%	0.8%	4.2%
Asian/Pacific Islander .....	1.0%	1.2%	1.0%	3.1%
Other .....	14.9%	5.2%	7.0%	12.9%
Hispanic .....	1.6%	12.8%	12.7%	30.5%
Communities of Color .....	97.7%	51.7%	42.5%	46.6%
Gender				
Females .....	53.1%	50.3%	50.7%	50.3%
Males .....	46.9%	49.7%	49.3%	49.7%
Single Parent Families .....	59.4%	31.3%	26.5%	26.9%
Female Headed Households .....	41.2%	27.5%	27.3%	26.4%
Disability Population .....	11.3%	15.4%	16.4%	13.2%
Speak Other Than English at Home .....	66.4%	29.3%	24.4%	26.7%
INCOME				
Population below 100% FPL .....	30.1%	20.8%	19.1%	14.1%
Population below 200% FPL .....	60.0%	43.1%	40.8%	33.0%
Median Household Income .....	\$37,633	\$47,461	\$46,898	\$62,115
Children <12 in Poverty .....	37.7%	25.5%	26.4%	20.7%
EDUCATION				
Less Than 9th Grade Education .....	9.0%	4.0%	3.5%	5.0%
9th-12th Grade, No Diploma .....	4.2%	7.7%	7.1%	7.0%
High School Graduate .....	39.0%	25.1%	26.3%	23.8%
Some College .....	24.9%	26.2%	28.3%	24.9%
College or Professional Degree Holder .....	22.6%	36.1%	34.0%	39.1%
MISCELLANEOUS				
Overnight Tourist Visits .....	311,728	7,605,632	16,209,330	49,599,807
Unemployed .....	19.6%	18.2%	16.3%	10.0%
"Uninsured" Births .....	4.0%	2.9%	3.5%	2.3%
Medicare Beneficiaries .....	93.2%	96.6%	97.3%	96.3%
Medically Uninsured .....	10.6%	12.0%	12.8%	10.6%
Transportation Score .....	162	113	121	113

RESOURCES	Hopi Tribe	COUNTY	HEALTH PLANNING REGION	ARIZONA
<b>FACILITIES</b>				
General Hospitals .....	No	4	9	71
Hospital Beds/1000 Residents .....	0.0	1.6	1.4	1.9
Designated as Sole Community Provider?	No	4	9	56
Specialty Beds .....	0	72	156	3,645
Skilled Nursing Facilities .....	0	4	6	102
Nursing Beds .....	0	339	451	11,632
<b>SERVICES</b>				
Licensed Home Health Agencies .....	0	5	14	179
Ambulatory Care Sites Type .....	D, E	A, B, C, D, E	A, B, C, D, E	A,B,C,D,E
Licensed Pharmacies .....	0	40	89	1,332
Certified Ambulance Services .....	0	14	24	106
<b>PERSONNEL</b>				
Primary Care Providers .....	20.0	313	610	9,751
Ratio-Population:Provider .....	525 :1	815:1	923 :1	747 :1
Nurse Practitioners .....	2	222	524	9,932
Physician Assistants .....	13	123	212	3,049
Registered Nurses .....	45	2,973	6,391	80,111
Midwives .....	0	25	42	312
Dentists .....	1	141	302	4,325
<b>UTILIZATION</b>				
<b>AMBULATORY CARE SENSITIVE CONDITIONS</b>				
ACSs/1000 Residents Age <65 .....	13.3	29.0	33.4	34.5
Points Above/Below (-) Statewide Average	-21.2	-5.6	-1.1	***
<b>HOSPITALIZATION</b>				
Inpatient Days/1000 Residents .....	570	576	573	570
Inpatient Days/1000 by Age Group:				
0-14 yrs .....	99	303	287	320
15-19 yrs .....	253	230	239	285
20-44 yrs .....	304	450	413	400
45-64 yrs .....	678	731	603	611
65-84 yrs .....	884	1,116	1,000	1,122
85+ yrs .....	1,217	1,967	1,738	1,815
Leading Diagnosis .....	Alcohol abuse with intoxi			
Leading Procedure .....	Respiratory Ventilation, Greater than 96 Consecutive Hou			
(Non-maternity related)				
*** Not Applicable, ++ Insufficient Data, ## Not Available				

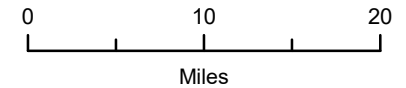
HEALTH STATUS	Hopi Tribe	COUNTY	HEALTH PLANNING REGION	ARIZONA
INFANT MORTALITY RATE .....	++	6.9	7.0	5.7
<b>MORTALITY, LEADING CAUSE OF DEATH</b>				
Infant .....	++			
Child (1-14) .....		Motor- or nonmotor-vehicle accident, type of vehicl		
Adolescent (15-19) .....	++			
Young Adult (20-44) .....		Motor- or nonmotor-vehicle accident, type of vehicl		
Mid Age (45-64) .....		Alcoholic liver disease		
Elderly (65-84) .....		Cardiac arrest		
Aged (85+) .....		Unspecified dementia		
PERCENT PREMATURE MORTALITY	65.2%	64.3%	57.4%	54.9%
<b>NATALITY</b>				
Fertility Rate/1000 Females 15-44 yrs .....	68.5	61.3	61.5	61.4
Birth Rate/1000 Residents .....	11.1	11.8	10.3	11.8
0-4 Prenatal Care Visits/1000 Births .....	96.1	78.9	70.9	66.5
Prenatal Care Began:				
None .....	5.0%	4.6%	3.8%	5.6%
Trimester One .....	60.8%	69.5%	70.3%	70.4%
Trimester Two .....	25.2%	20.0%	20.2%	18.1%
Trimester Three .....	8.9%	5.8%	5.6%	5.9%
Unknown .....	0.1%	0.1%	0.1%	0.0%
Low-weight Births/1000 Live Births .....	96.1	83.1	78.6	72.8
Teen Births/1000 Females 14-19 yrs .....	36.1	23.7	21.6	20.2
Area Location IDs:				
Census Tracts: 040059449.00, 040179400.12, 040179400.13				
Other Places in area:				
Bacobi, Chakpahu, Five Houses, Hano, Hard Rocks, Hopi Indian Reservation, Hotevilla, Jeddito, Kawaika-A, Keams Canyon, Kokopnyama, Kykotsmovi, Kykotsmovi Village, Mishongnovi, Moenkopi, Moqui Pueblos, Nesuftanga, Old Oraibi, Old Orchard Picnic Ground, Old Shongopavi, Oraibi, Pink Arrow, Po Ni Vi, Polacca, Second Mesa, Shipolovi, Shongopovi, Sichomovi, Sipaulovi, Toreva, Walpi, Wepo Village				
*** Not Applicable, ++ Insufficient Data, ## Not Available				

# HOPI TRIBE PRIMARY CARE AREA

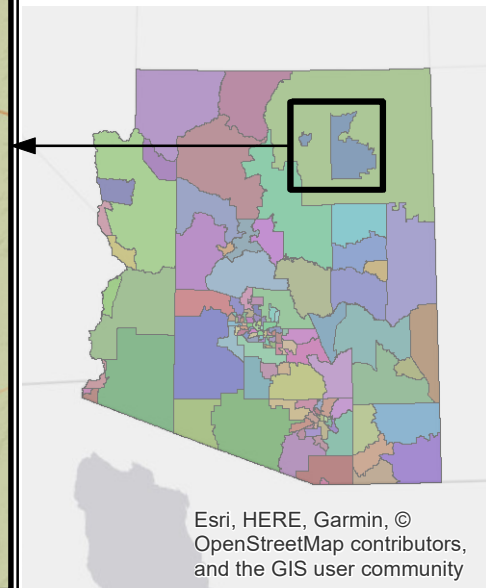
## PCA ID 11



ARIZONA DEPARTMENT  
OF HEALTH SERVICES



Map Date 03/14/2018



Sources: Esri, HERE, Garmin, USGS, Intermap, INCREMENT P, NRCan, Esri Japan, METI, Esri China (Hong Kong), Esri Korea, Esri (Thailand), NGCC, © OpenStreetMap contributors, and the GIS User Community

Esri, HERE, Garmin, © OpenStreetMap contributors, and the GIS user community