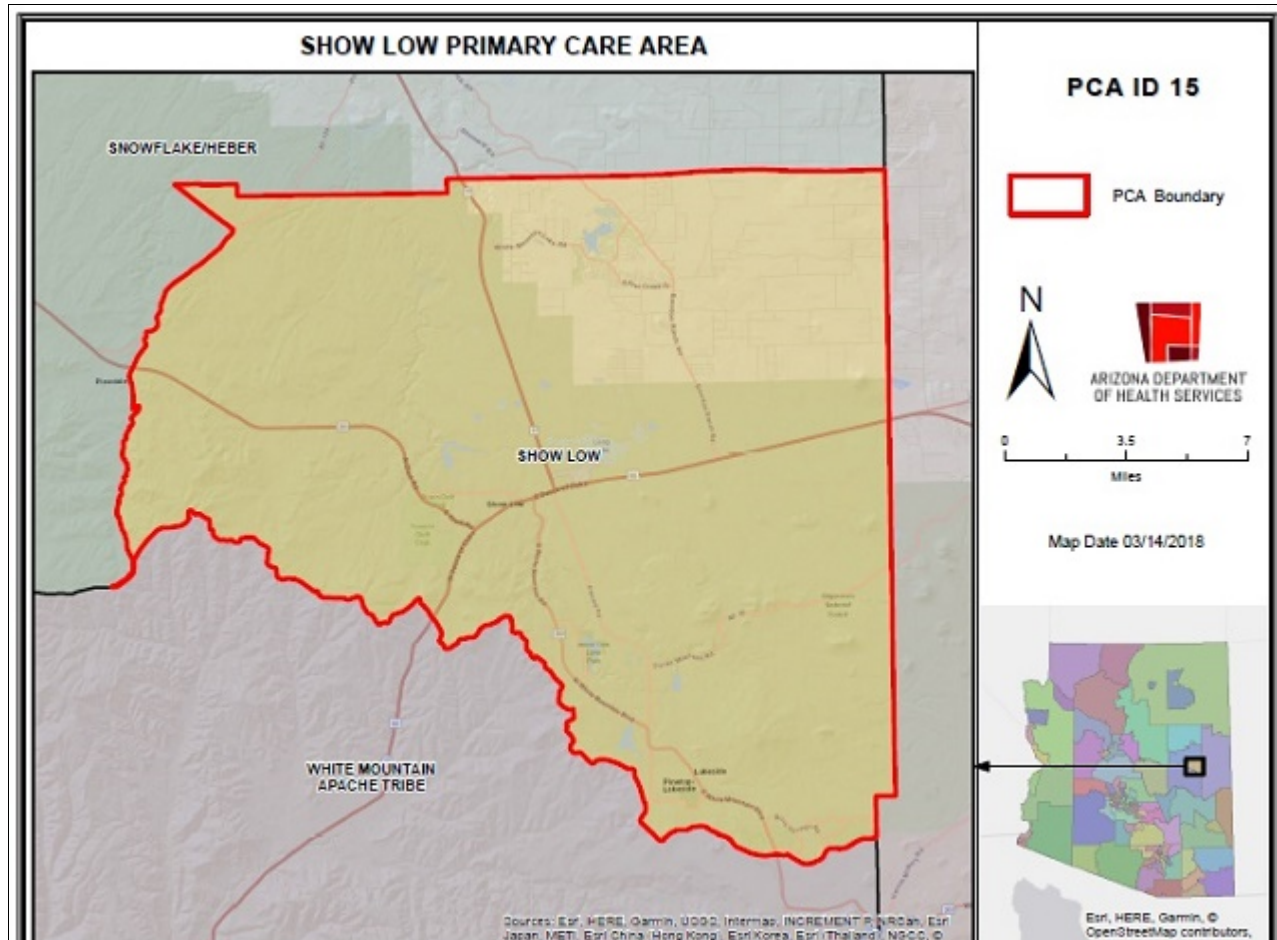


Show Low Primary Care Area (PCA) 2021 STATISTICAL PROFILE

For definitions and sources of data used in these profiles, see:

<http://www.azdhs.gov/documents/prevention/health-systems-development/data-reports-maps/reports/datadocu.pdf>

DESCRIPTION OF AREA	PCA Number	15
	Major Population Center	Show Low
	County	NAVAJO
	Health Planning Region	3
	Primary Care Score	30
	Rural Code Designation:	RURAL
	Special Tax District?	No
	State House Legislative District	7
	Designated as AzMUA?	Yes
	Designated as Primary Care HPSA	P Low Inc., (Show Low)
	Designated as Federal MUA/P	38.10, MUA, (Navajo County)
	Next Nearest Provider	Lakeside
	2nd Nearest Provider	Polacca
	Travel Distance to Next Nearest Provider	8.57 miles
	Travel Distance to 2nd Nearest Provider...	11.73 miles

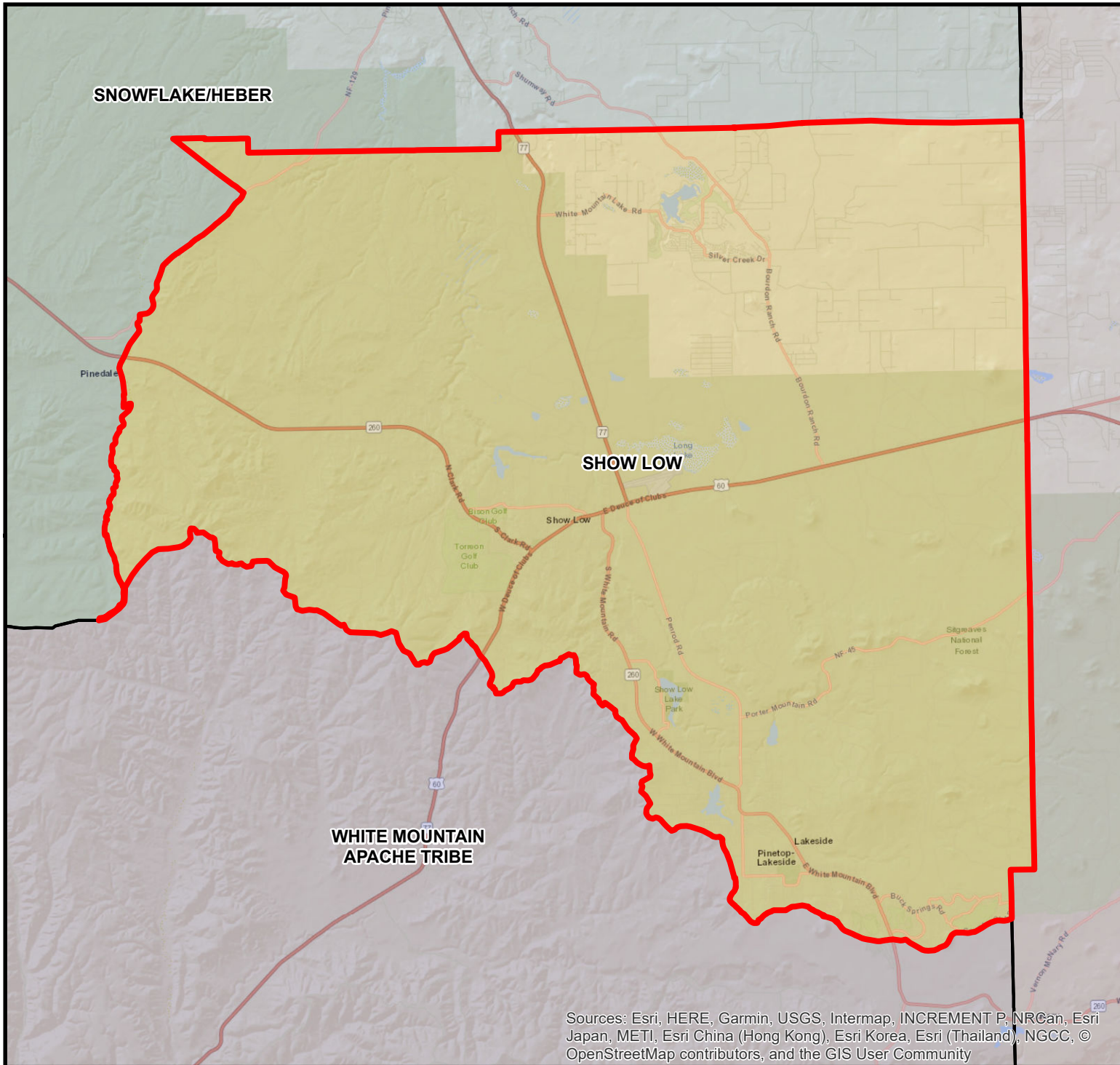


DEMOGRAPHICS	Show Low	COUNTY	HEALTH PLANNING REGION	ARIZONA
POPULATION	30,216	107,748	562,766	7,285,370
Population Density	95.7	10.8	11.7	63.9
Persons By Age				
0-14	5,126	24,357	96,013	1,384,121
15-19	1,797	7,617	42,014	485,151
20-44	6,683	32,000	159,488	2,400,824
45-64	7,870	26,851	141,909	1,745,588
65-84	8,158	18,362	112,598	1,142,268
85 +	608	1,331	10,760	139,201
Race/Ethnicity				
White	103.3%	56.6%	69.4%	75.8%
American Indian	3.2%	37.9%	21.8%	4.0%
Black	0.4%	0.9%	0.8%	4.2%
Asian/Pacific Islander	0.9%	0.7%	1.0%	3.1%
Other	-7.8%	3.9%	7.0%	12.9%
Hispanic	13.6%	10.1%	12.7%	30.5%
Communities of Color	23.3%	58.0%	42.5%	46.6%
Gender				
Females	51.3%	49.9%	50.7%	50.3%
Males	48.7%	50.1%	49.3%	49.7%
Single Parent Families	20.5%	34.0%	26.5%	26.9%
Female Headed Households	24.1%	28.8%	27.3%	26.4%
Disability Population	18.8%	18.8%	16.4%	13.2%
Speak Other Than English at Home	12.1%	36.4%	24.4%	26.7%
INCOME				
Population below 100% FPL	15.1%	25.3%	19.1%	14.1%
Population below 200% FPL	38.3%	49.4%	40.8%	33.0%
Median Household Income	\$53,820	\$39,629	\$46,898	\$62,115
Children <12 in Poverty	30.5%	36.0%	26.4%	20.7%
EDUCATION				
Less Than 9th Grade Education	5.6%	5.4%	3.5%	5.0%
9th-12th Grade, No Diploma	2.3%	10.1%	7.1%	7.0%
High School Graduate	24.7%	29.1%	26.3%	23.8%
Some College	30.6%	29.6%	28.3%	24.9%
College or Professional Degree Holder	35.9%	24.8%	34.0%	39.1%
MISCELLANEOUS				
Overnight Tourist Visits	901,830	3,223,109	16,209,330	49,599,807
Unemployed	13.4%	25.3%	16.3%	10.0%
"Uninsured" Births	1.7%	2.9%	3.5%	2.3%
Medicare Beneficiaries	99.1%	97.5%	97.3%	96.3%
Medically Uninsured	12.1%	13.3%	12.8%	10.6%
Transportation Score	105	132	121	113

RESOURCES	Show Low	COUNTY	HEALTH PLANNING REGION	ARIZONA
FACILITIES				
General Hospitals	Yes	2	9	71
Hospital Beds/1000 Residents	3.3	1.2	1.4	1.9
Designated as Sole Community Provider?	Yes	2	9	56
Specialty Beds	16	16	156	3,645
Skilled Nursing Facilities	1	2	6	102
Nursing Beds	112	231	451	11,632
SERVICES				
Licensed Home Health Agencies	1	1	14	179
Ambulatory Care Sites Type	A, B, C, D, E	A, B, C, D, E	A, B, C, D, E	A,B,C,D,E
Licensed Pharmacies	10	17	89	1,332
Certified Ambulance Services	2	6	24	106
PERSONNEL				
Primary Care Providers	42.0	103	610	9,751
Ratio-Population:Provider	719 :1	1,046:1	923 :1	747 :1
Nurse Practitioners	70	158	524	9,932
Physician Assistants	28	44	212	3,049
Registered Nurses	518	995	6,391	80,111
Midwives	4	5	42	312
Dentists	27	43	302	4,325
UTILIZATION				
AMBULATORY CARE SENSITIVE CONDITIONS				
ACSs/1000 Residents Age <65	40.6	35.2	33.4	34.5
Points Above/Below (-) Statewide Average	6.1	0.6	-1.1	***
HOSPITALIZATION				
Inpatient Days/1000 Residents	714	784	573	570
Inpatient Days/1000 by Age Group:				
0-14 yrs	450	331	287	320
15-19 yrs	376	470	239	285
20-44 yrs	713	661	413	400
45-64 yrs	693	909	603	611
65-84 yrs	896	1,289	1,000	1,122
85+ yrs	1,463	1,925	1,738	1,815
Leading Diagnosis	Chest pain, unspecified			
Leading Procedure	Insertion of Infusion Device into Superior Vena Cava, Pe (Non-maternity related)			
*** Not Applicable, ++ Insufficient Data, ## Not Available				

HEALTH STATUS	Show Low	COUNTY	HEALTH PLANNING REGION	ARIZONA
INFANT MORTALITY RATE	++	8.2	7.0	5.7
MORTALITY, LEADING CAUSE OF DEATH				
Infant		Sudden infant death syndrome		
Child (1-14)		Other disorders of brain		
Adolescent (15-19)		Open wound of head		
Young Adult (20-44)		Intentional self-harm by other and unspecified firea		
Mid Age (45-64)		Cardiac arrest		
Elderly (65-84)		Cardiac arrest		
Aged (85+)		Cardiac arrest		
PERCENT PREMATURE MORTALITY	59.8%	64.7%	57.4%	54.9%
NATALITY				
Fertility Rate/1000 Females 15-44 yrs	62.0	78.2	61.5	61.4
Birth Rate/1000 Residents	10.0	13.2	10.3	11.8
0-4 Prenatal Care Visits/1000 Births	47.3	94.3	70.9	66.5
Prenatal Care Began:				
None	2.0%	3.6%	3.8%	5.6%
Trimester One	70.7%	65.1%	70.3%	70.4%
Trimester Two	22.0%	24.0%	20.2%	18.1%
Trimester Three	5.0%	7.2%	5.6%	5.9%
Unknown	0.3%	0.1%	0.1%	0.0%
Low-weight Births/1000 Live Births	76.1	85.1	78.6	72.8
Teen Births/1000 Females 14-19 yrs	23.8	31.5	21.6	20.2
Area Location IDs:				
<small>Census Tracts: 040179613.00, 040179617.01, 040179617.02, 040179625.01, 040179625.02, 040179642.02, 040179648.01, 040179648.02, 040179649.01, 040179649.02, 040179652.01, 040179652.02, 040179653.01, 040179653.02</small>				
Other Places in area:				
<small>Bell, Burton, Lake Of The Woods, Lakeside, Linden, Martinez Lake, Pinetop, Pinetop-Lakeside, Rainbow Lake Campground, Show Low, Silver Creek, Sponseller, White Mountain Lake</small>				
*** Not Applicable, ++ Insufficient Data, ## Not Available				

SHOW LOW PRIMARY CARE AREA

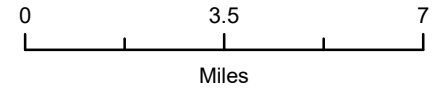


Sources: Esri, HERE, Garmin, USGS, Intermap, INCREMENT P, NRCan, Esri Japan, METI, Esri China (Hong Kong), Esri Korea, Esri (Thailand), NGCC, © OpenStreetMap contributors, and the GIS User Community

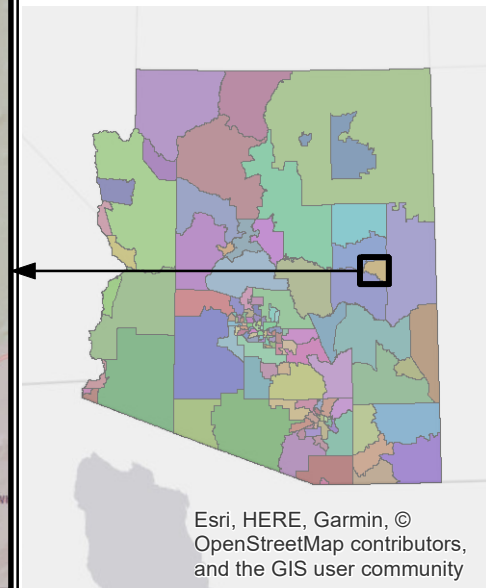
PCA ID 15



ARIZONA DEPARTMENT
OF HEALTH SERVICES



Map Date 03/14/2018



Esri, HERE, Garmin, ©
OpenStreetMap contributors,
and the GIS user community