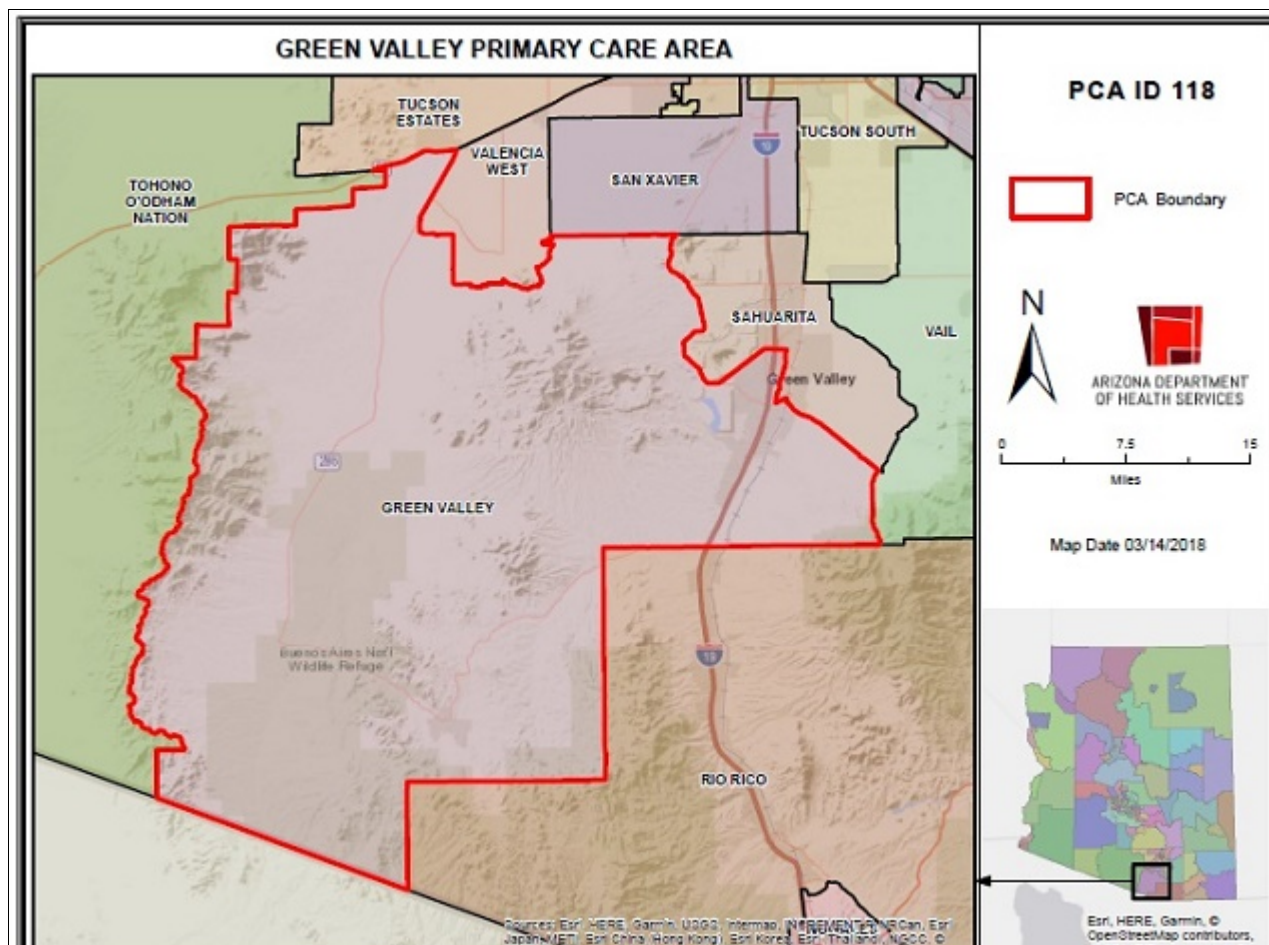


# Green Valley Primary Care Area (PCA) 2021 STATISTICAL PROFILE

For definitions and sources of data used in these profiles, see:

<http://www.azdhs.gov/documents/prevention/health-systems-development/data-reports-maps/reports/datadocu.pdf>

DESCRIPTION OF AREA	PCA Number .....	118
	Major Population Center .....	Green Valley
	County .....	PIMA
	Health Planning Region .....	2
	Primary Care Score .....	32
	Rural Code Designation: .....	URBAN
	Special Tax District? .....	No
	State House Legislative District .....	19, 21, 23
	Designated as AzMUA? .....	Yes
	Designated as Primary Care HPSA .....	No
	Designated as Federal MUA/P .....	52.30, MUA, (Arivaca)
	Next Nearest Provider .....	Amado
	2nd Nearest Provider .....	Sahuarita
	Travel Distance to Next Nearest Provider .....	11.65 miles
	Travel Distance to 2nd Nearest Provider...	18.91 miles



DEMOGRAPHICS	Green Valley	COUNTY	HEALTH PLANNING REGION	ARIZONA
POPULATION .....	26,791	1,058,318	1,281,867	7,285,370
Population Density .....	24.1	115.2	55.4	63.9
Persons By Age .....				
0-14 .....	603	181,572	225,818	1,384,121
15-19 .....	243	69,776	84,889	485,151
20-44 .....	1,306	346,617	414,858	2,400,824
45-64 .....	4,907	246,312	298,138	1,745,588
65-84 .....	15,844	184,722	223,166	1,142,268
85 + .....	1,787	23,524	28,193	139,201
Race/Ethnicity				
White .....	91.3%	77.6%	77.7%	75.8%
American Indian .....	0.5%	3.1%	3.2%	4.0%
Black .....	0.4%	3.6%	3.5%	4.2%
Asian/Pacific Islander .....	0.7%	2.9%	2.7%	3.1%
Other .....	7.1%	12.8%	12.9%	12.9%
Hispanic .....	11.1%	35.6%	37.0%	30.5%
Communities of Color .....	15.1%	48.5%	49.6%	46.6%
Gender				
Females .....	54.8%	50.8%	50.5%	50.3%
Males .....	45.2%	49.2%	49.5%	49.7%
Single Parent Families .....	7.5%	29.2%	28.5%	26.9%
Female Headed Households .....	30.8%	28.8%	28.4%	26.4%
Disability Population .....	28.1%	15.2%	15.3%	13.2%
Speak Other Than English at Home .....	12.2%	27.4%	29.1%	26.7%
INCOME				
Population below 100% FPL .....	5.7%	15.9%	16.2%	14.1%
Population below 200% FPL .....	25.0%	35.8%	36.8%	33.0%
Median Household Income .....	\$47,155	\$59,626	\$55,710	\$62,115
Children <12 in Poverty .....	2.2%	22.9%	23.2%	20.7%
EDUCATION				
Less Than 9th Grade Education .....	4.7%	4.1%	4.4%	5.0%
9th-12th Grade, No Diploma .....	2.0%	6.7%	7.0%	7.0%
High School Graduate .....	22.8%	21.5%	22.3%	23.8%
Some College .....	23.1%	25.0%	25.3%	24.9%
College or Professional Degree Holder ....	46.8%	42.5%	40.9%	39.1%
MISCELLANEOUS				
Overnight Tourist Visits .....	121,011	4,785,454	5,800,084	49,599,807
Unemployed .....	40.1%	11.7%	12.1%	10.0%
"Uninsured" Births .....	2.0%	3.2%	3.7%	2.3%
Medicare Beneficiaries .....	98.9%	97.4%	97.2%	96.3%
Medically Uninsured .....	3.9%	8.9%	8.8%	10.6%
Transportation Score .....	127	110	103	113

RESOURCES	Green Valley	COUNTY	HEALTH PLANNING REGION	ARIZONA
FACILITIES				
General Hospitals .....	Yes	10	16	71
Hospital Beds/1000 Residents .....	1.8	2.7	2.4	1.9
Designated as Sole Community Provider?	Yes	10	16	56
Specialty Beds .....	0	523	523	3,645
Skilled Nursing Facilities .....	1	20	24	102
Nursing Beds .....	111	2,549	2,923	11,632
SERVICES				
Licensed Home Health Agencies .....	2	28	35	179
Ambulatory Care Sites Type .....	A, C, D, E	A, B, C, D, E	A, B, C, D, E	A,B,C,D,E
Licensed Pharmacies .....	6	203	244	1,332
Certified Ambulance Services .....	2	15	32	106
PERSONNEL				
Primary Care Providers .....	25.0	1,709	1,884	9,751
Ratio-Population:Provider .....	1,072 :1	619:1	680 :1	747 :1
Nurse Practitioners .....	25	1,746	2,158	9,932
Physician Assistants .....	7	250	303	3,049
Registered Nurses .....	164	12,438	14,209	80,111
Midwives .....	0	59	66	312
Dentists .....	5	595	666	4,325
UTILIZATION				
AMBULATORY CARE SENSITIVE CONDITIONS				
ACSS/1000 Residents Age <65 .....	37.6	32.3	34.9	34.5
Points Above/Below (-) Statewide Average	3.0	-2.2	0.4	***
HOSPITALIZATION				
Inpatient Days/1000 Residents .....	693	577	571	570
Inpatient Days/1000 by Age Group:				
0-14 yrs .....	208	337	330	320
15-19 yrs .....	202	281	277	285
20-44 yrs .....	633	386	378	400
45-64 yrs .....	394	654	637	611
65-84 yrs .....	756	1,039	1,059	1,122
85+ yrs .....	2,002	1,820	1,771	1,815
Leading Diagnosis .....	Urinary tract infection,			
Leading Procedure .....	#####			
(Non-maternity related)				
*** Not Applicable, ++ Insufficient Data, ## Not Available				

HEALTH STATUS	Green Valley	COUNTY	HEALTH PLANNING REGION	ARIZONA
INFANT MORTALITY RATE .....	++	5.3	5.5	5.7
MORTALITY, LEADING CAUSE OF DEATH				
Infant .....	Cardiovascular disorders originating in the perinat			
Child (1-14) .....	++			
Adolescent (15-19) .....	++			
Young Adult (20-44) .....	Open wound of head			
Mid Age (45-64) .....	Malignant neoplasm of bronchus and lung			
Elderly (65-84) .....	Chronic ischaemic heart disease			
Aged (85+) .....	Chronic ischaemic heart disease			
PERCENT PREMATURE MORTALITY	35.8%	52.2%	52.9%	54.9%
NATALITY				
Fertility Rate/1000 Females 15-44 yrs .....	46.2	56.8	59.1	61.4
Birth Rate/1000 Residents .....	1.8	10.7	11.0	11.8
0-4 Prenatal Care Visits/1000 Births .....	198.7	109.1	117.6	66.5
Prenatal Care Began:				
None .....	12.4%	4.7%	5.1%	5.6%
Trimester One .....	57.0%	66.0%	64.6%	70.4%
Trimester Two .....	19.7%	21.1%	21.5%	18.1%
Trimester Three .....	10.5%	8.2%	8.6%	5.9%
Unknown .....	0.4%	0.0%	0.2%	0.0%
Low-weight Births/1000 Live Births .....	93.9	74.9	75.5	72.8
Teen Births/1000 Females 14-19 yrs .....	15.9	18.5	20.1	20.2

## Area Location IDs:

Census Tracts: 040190041.29, 040190043.07, 040190043.16, 040190043.17, 040190043.24, 040190043.25, 040190043.28, 040190043.30, 040190043.32, 040190043.37, 040190043.38

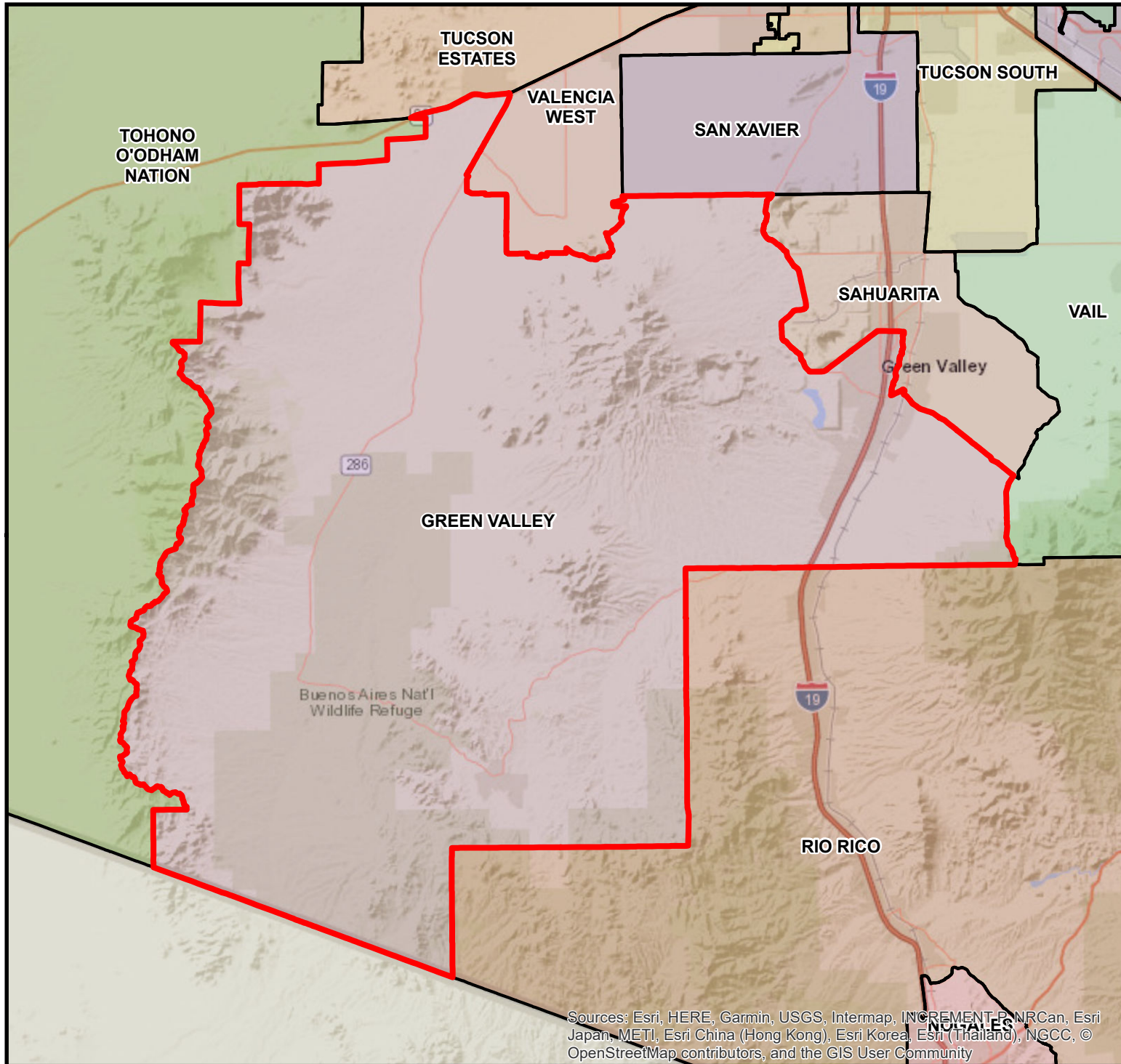
## Other Places in area:

Amado, Arivaca, Arivaca Junction, Arivaca King Mine, Elkhorn Ranch, Continental, Golden Star Mine, Green Valley, La Canada Ranch, Las Guijas, Madera Canyon, Old Sopori School, Puertocito, Punta Del Agua, Rancho De La Osa, Rancho Seco, Roades Ranch, San Xavier, Sandwash Mill, Sasabe, Secundino, Silver Coin Mine

\*\*\* Not Applicable, ++ Insufficient Data, ## Not Available

# GREEN VALLEY PRIMARY CARE AREA

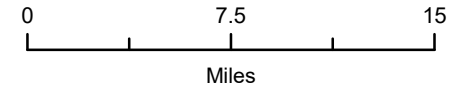
PCA ID 118



PCA Boundary



ARIZONA DEPARTMENT  
OF HEALTH SERVICES



Map Date 03/14/2018

