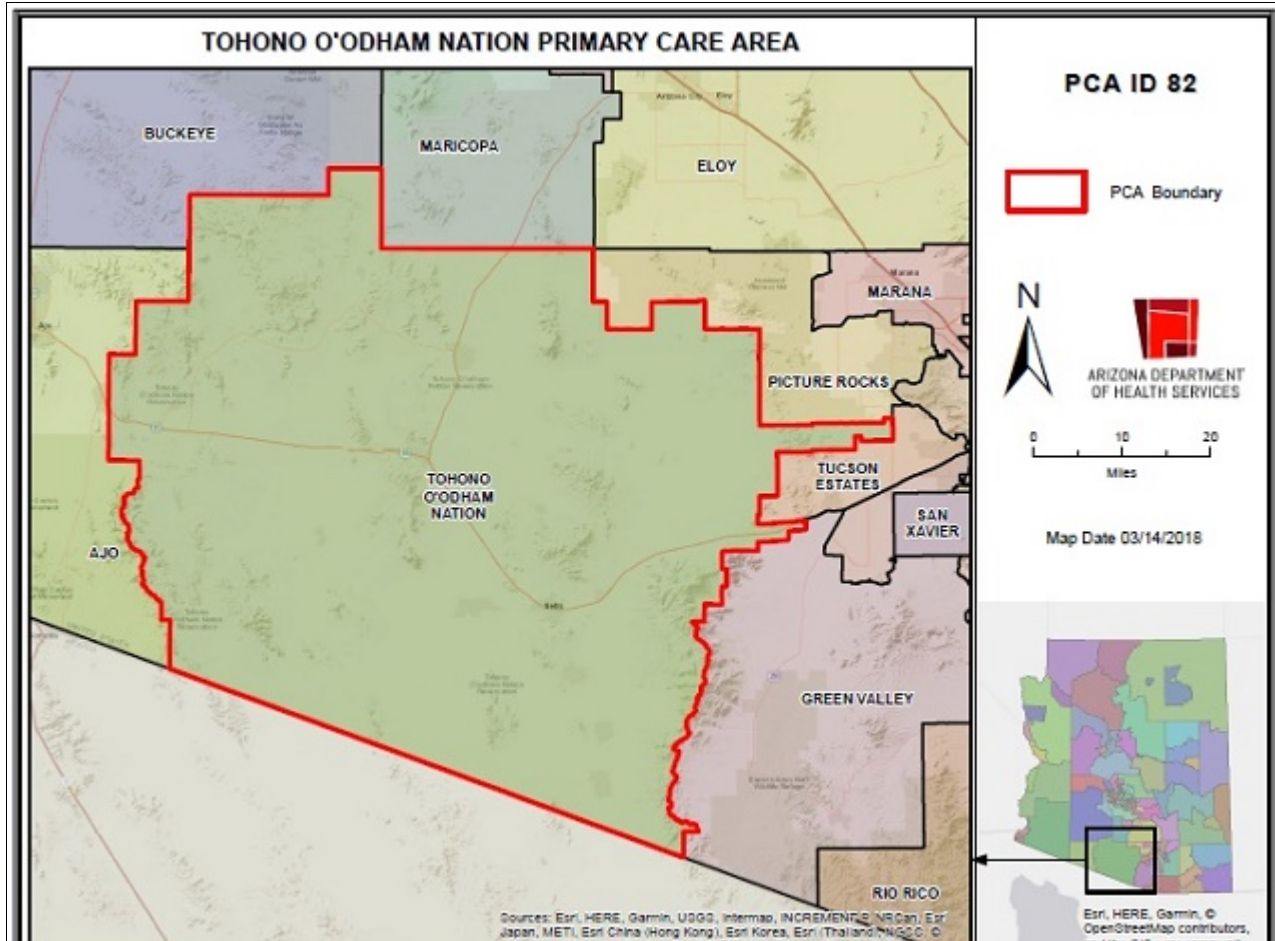


# Tohono O'odham Nation Primary Care Area (PCA) 2021 STATISTICAL PROFILE

For definitions and sources of data used in these profiles, see:

<http://www.azdhs.gov/documents/prevention/health-systems-development/data-reports-maps/reports/datadocu.pdf>

DESCRIPTION OF AREA	PCA Number .....	82	
	Major Population Center .....	Sells	
	County .....	PIMA, MARICOPA, PINAL	
	Health Planning Region .....	1, 2	
	Primary Care Score .....	43	
	Rural Code Designation: .....	INDIAN	
	Special Tax District? .....	No	
	State House Legislative District .....	23	
	Designated as AzMUA? .....	Yes	
	Designated as Primary Care HPSA .....	Geographic HN, (Tohono O'odham Nation)	
	Designated as Federal MUA/P .....	No	
	Next Nearest Provider .....	Many Farms	
2nd Nearest Provider .....	Tucson		
Travel Distance to Next Nearest Provider	20.53 miles		
Travel Distance to 2nd Nearest Provider...	64.15 miles		

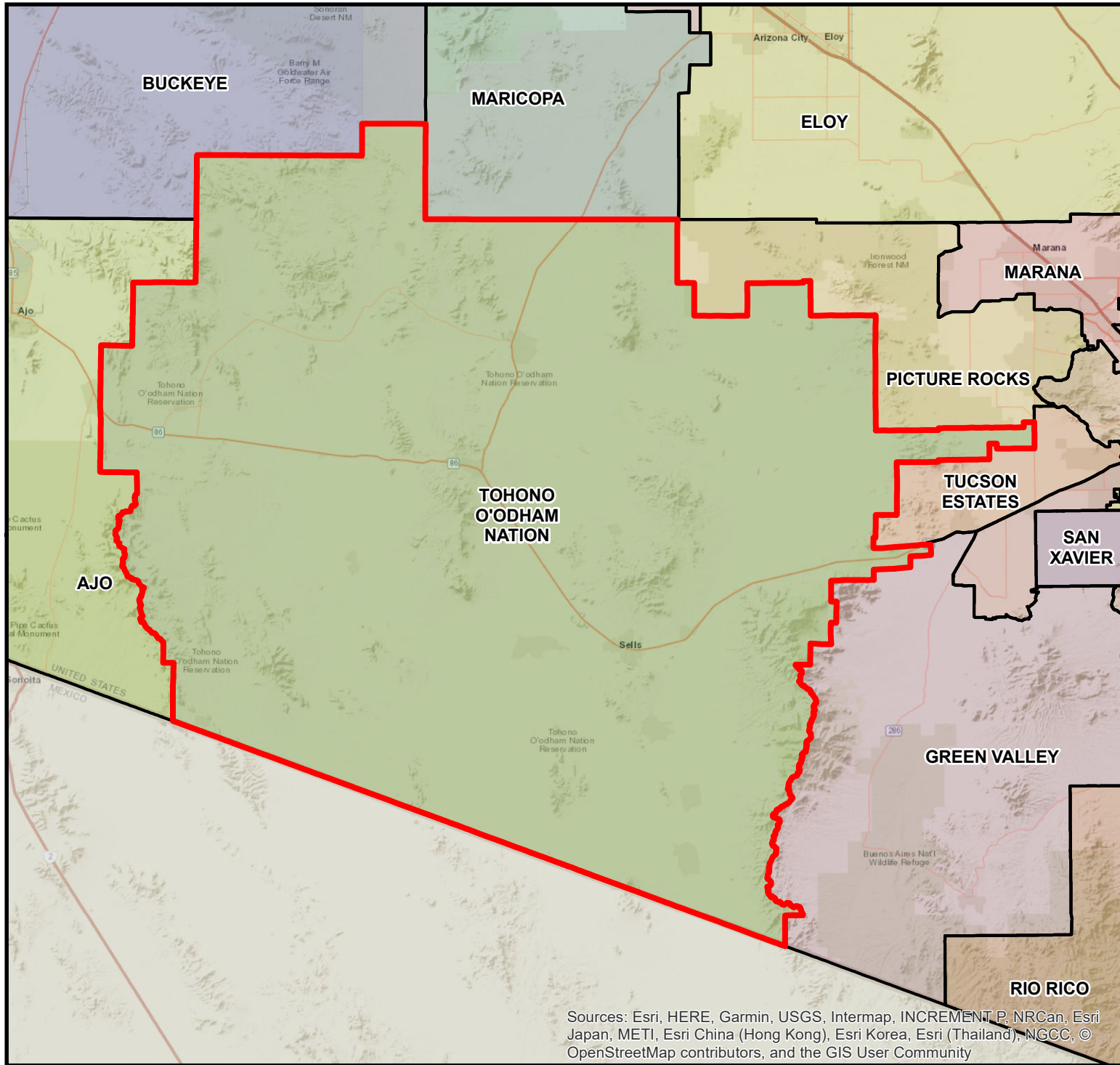


DEMOGRAPHICS	Tohono O'odham Nation	COUNTY	HEALTH PLANNING REGION	ARIZONA
POPULATION .....	6,607	6,004,865	6,281,939	7,285,370
Population Density .....	1.7	252.4	147.7	63.9
Persons By Age .....				
0-14 .....	1,996	1,156,812	1,209,982	1,384,121
15-19 .....	742	399,613	417,208	485,151
20-44 .....	2,494	2,033,849	2,114,782	2,400,824
45-64 .....	1,551	1,432,397	1,498,456	1,745,588
65-84 .....	837	874,329	926,535	1,142,268
85 + .....	34	111,126	117,629	139,201
Race/Ethnicity				
White .....	1.8%	75.9%	76.0%	75.8%
American Indian .....	73.4%	2.4%	2.5%	4.0%
Black .....	0.1%	4.8%	4.7%	4.2%
Asian/Pacific Islander .....	0.2%	3.5%	3.4%	3.1%
Other .....	24.5%	13.4%	13.4%	12.9%
Hispanic .....	4.0%	31.2%	31.6%	30.5%
Communities of Color .....	99.0%	46.8%	47.0%	46.6%
Gender				
Females .....	54.2%	50.4%	50.4%	50.3%
Males .....	45.8%	49.6%	49.6%	49.7%
Single Parent Families .....	72.1%	27.0%	27.0%	26.9%
Female Headed Households .....	48.6%	26.4%	26.4%	26.4%
Disability Population .....	20.0%	12.4%	12.6%	13.2%
Speak Other Than English at Home .....	37.0%	26.3%	26.6%	26.7%
INCOME				
Population below 100% FPL .....	47.5%	13.2%	13.4%	14.1%
Population below 200% FPL .....	73.5%	31.2%	31.6%	33.0%
Median Household Income .....	\$23,405	\$70,987	\$68,547	\$62,115
Children <12 in Poverty .....	56.9%	19.5%	19.8%	20.7%
EDUCATION				
Less Than 9th Grade Education .....	15.6%	5.0%	5.0%	5.0%
9th-12th Grade, No Diploma .....	6.9%	6.6%	6.6%	7.0%
High School Graduate .....	51.3%	22.8%	23.0%	23.8%
Some College .....	14.3%	24.3%	24.4%	24.9%
College or Professional Degree Holder .....	11.3%	41.3%	40.9%	39.1%
MISCELLANEOUS				
Overnight Tourist Visits .....	29,788	23,785,354	26,290,729	49,599,807
Unemployed .....	64.4%	9.0%	9.1%	10.0%
"Uninsured" Births .....	28.6%	2.0%	2.2%	2.3%
Medicare Beneficiaries .....	97.7%	96.1%	96.2%	96.3%
Medically Uninsured .....	7.1%	10.4%	10.3%	10.6%
Transportation Score .....	237	102	105	113

RESOURCES	Tohono O'odham Nation	COUNTY	HEALTH PLANNING REGION	ARIZONA
<b>FACILITIES</b>				
General Hospitals .....	No	48	56	71
Hospital Beds/1000 Residents .....	0.0	2.0	1.9	1.9
Designated as Sole Community Provider?	No	35	43	56
Specialty Beds .....	0	3,396	3,396	3,645
Skilled Nursing Facilities .....	1	85	92	102
Nursing Beds .....	0	10,052	10,789	11,632
<b>SERVICES</b>				
Licensed Home Health Agencies .....	0	141	151	179
Ambulatory Care Sites Type .....	D	A, B, C, D, E	A, B, C, D, E	A,B,C,D,E
Licensed Pharmacies .....	0	1,115	1,167	1,332
Certified Ambulance Services .....	0	46	68	106
<b>PERSONNEL</b>				
Primary Care Providers .....	11.0	8,423	8,644	9,751
Ratio-Population:Provider .....	601 :1	713:1	727 :1	747 :1
Nurse Practitioners .....	8	8,314	8,807	9,932
Physician Assistants .....	2	2,648	2,722	3,049
Registered Nurses .....	9	67,775	70,022	80,111
Midwives .....	0	246	254	312
Dentists .....	0	3,807	3,893	4,325
<b>UTILIZATION</b>				
<b>AMBULATORY CARE SENSITIVE CONDITIONS</b>				
ACSs/1000 Residents Age <65 .....	32.3	33.3	34.0	34.5
Points Above/Below (-) Statewide Average	-2.3	-1.3	-0.5	***
<b>HOSPITALIZATION</b>				
Inpatient Days/1000 Residents .....	1,376	566	567	570
Inpatient Days/1000 by Age Group:				
0-14 yrs .....	325	324	325	320
15-19 yrs .....	454	295	294	285
20-44 yrs .....	759	405	404	400
45-64 yrs .....	2,545	609	609	611
65-84 yrs .....	2,461	1,142	1,141	1,122
85+ yrs .....	3,568	1,849	1,824	1,815
Leading Diagnosis .....	Sepsis, unspecified organ			
Leading Procedure .....	Performance of Urinary Filtration, Intermittent, Less th			
(Non-maternity related)				
*** Not Applicable, ++ Insufficient Data, ## Not Available				

HEALTH STATUS	Tohono O'odham Nation	COUNTY	HEALTH PLANNING REGION	ARIZONA
INFANT MORTALITY RATE .....	++	5.6	5.6	5.7
MORTALITY, LEADING CAUSE OF DEATH				
Infant .....	Other ill-defined and unspecified causes of mortalit			
Child (1-14) .....	Pedestrian injured in other and unspecified transp			
Adolescent (15-19) .....	++			
Young Adult (20-44) .....	Asphyxiation			
Mid Age (45-64) .....	Cardiac arrest			
Elderly (65-84) .....	Cardiac arrest			
Aged (85+) .....	Chronic ischaemic heart disease			
PERCENT PREMATURE MORTALITY	77.9%	54.1%	54.2%	54.9%
NATALITY				
Fertility Rate/1000 Females 15-44 yrs .....	103.4	60.8	61.1	61.4
Birth Rate/1000 Residents .....	15.0	12.0	12.0	11.8
0-4 Prenatal Care Visits/1000 Births .....	272.6	59.7	63.7	66.5
Prenatal Care Began:				
None .....	9.5%	5.6%	5.6%	5.6%
Trimester One .....	45.0%	71.5%	71.0%	70.4%
Trimester Two .....	32.1%	17.4%	17.7%	18.1%
Trimester Three .....	13.0%	5.4%	5.6%	5.9%
Unknown .....	0.4%	0.1%	0.1%	0.0%
Low-weight Births/1000 Live Births .....	77.9	72.6	73.0	72.8
Teen Births/1000 Females 14-19 yrs .....	64.3	19.4	19.8	20.2
Area Location IDs:				
Census Tracts: 040139407.00, 040199408.00, 040199411.00, 040219414.02				
Other Places in area:				
Artesa, Ali Chukson, Ali Molina, Ali Oidak, Anegam, Achi, Ahan Owuch, Ahe Vonam, Ak Chut Vaya, Ak Komelik, Ali Chuk, Bibyak, Big Field, Buenos Aires, Cababi Mine, Charco, Charco De La Piedra, Chiawuli Tak, Emika, Ernika, Fesnal, Fesnal Canyon, Chiuli Shaik, Chiulikam, Chot Vaya, Choulic, Chukson, Chukut Kuk, Chutum Vaya, Chuwut Murk, Coldfield, Comobabi, Covered Wells, Cowlic, Coyote Field, Curnahauti, Green Mine, Gu Achi, Gu Chuapo, Gu Oidak, Gu Vo, Gurli Put Vo, Haivan Vaya, Haivana Nakya, Hali Murk, Hashan Chuchg, Hickiwan, Hoa Murk, Hoi Oidak, Iron Pipe, Itak, Kahachi Miliuk, Kaihon Kug, Kaka, Ko Vaya, Kom Kug, Kom Vo, Komak Wuacho, Kots Kug, Kuakatch, Kui Tat, Kuit Vaya, Kupk, Little Tucson, Maish Vaya, Maivayi, Makgum Havoka, Menagers Dam, Midnite Mine, Narcho Santos, Nawt Vaya, Newfield, Noipa Kam, Nolic, Oit Ihuk, Palo Verde Stand, Pan Tak, Papago Farms, Papago Indian Reservation, Pavo Kug, Peach Pu, Pia Oik, Piato Vaya, Picacho, Pipyak, Pisinemo, Pitoikam, Presumido Store, Queens Well, Quijotoa, Quinlin, Rincon, San Agustin, San Juan Spring, San Luis, San Luis Pima Co, San Miguel, San Pedro, San Rafael, San Serafin, San Simone, San Vicente, Santa Cruz, Santa Lucia, Santa Rosa, Sapano Vaya, Schuchk, Schuchuli, Sells, Shaotkam, Sikort Chuapo, Sikul Himatk, Sil Nakya, Siovi Shuatak, Sivili Chuchg, Skoksonak, South Komelik, Stan Shuatak, Stoa Pitk, Stotonyak, Supi Oidak, Sweetwater, Tatai Toak, Tat Kam Vo, Tatcum Vo, Tatnick, Tecolete, The Gate, Tohono O'odham Indian Reservation, Topawa, Totopitk, Uhs Kug, Utevak, Vainom Kug, Vakamok, Vamori, Vaya Chin, Ventana, Viason Chin, Vopolo Havoka, Wahak Hotrontk,				
*** Not Applicable, ++ Insufficient Data, ## Not Available				

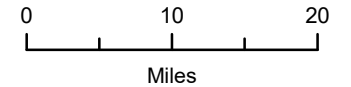
# TOHONO O'ODHAM NATION PRIMARY CARE AREA



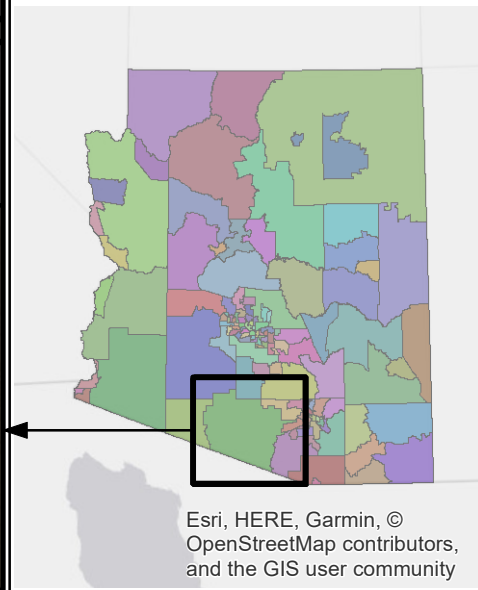
**PCA ID 82**



ARIZONA DEPARTMENT  
OF HEALTH SERVICES



Map Date 03/14/2018



Sources: Esri, HERE, Garmin, USGS, Intermap, INCREMENT P, NRCan, Esri Japan, METI, Esri China (Hong Kong), Esri Korea, Esri (Thailand), NGCC, © OpenStreetMap contributors, and the GIS User Community

Esri, HERE, Garmin, © OpenStreetMap contributors, and the GIS user community