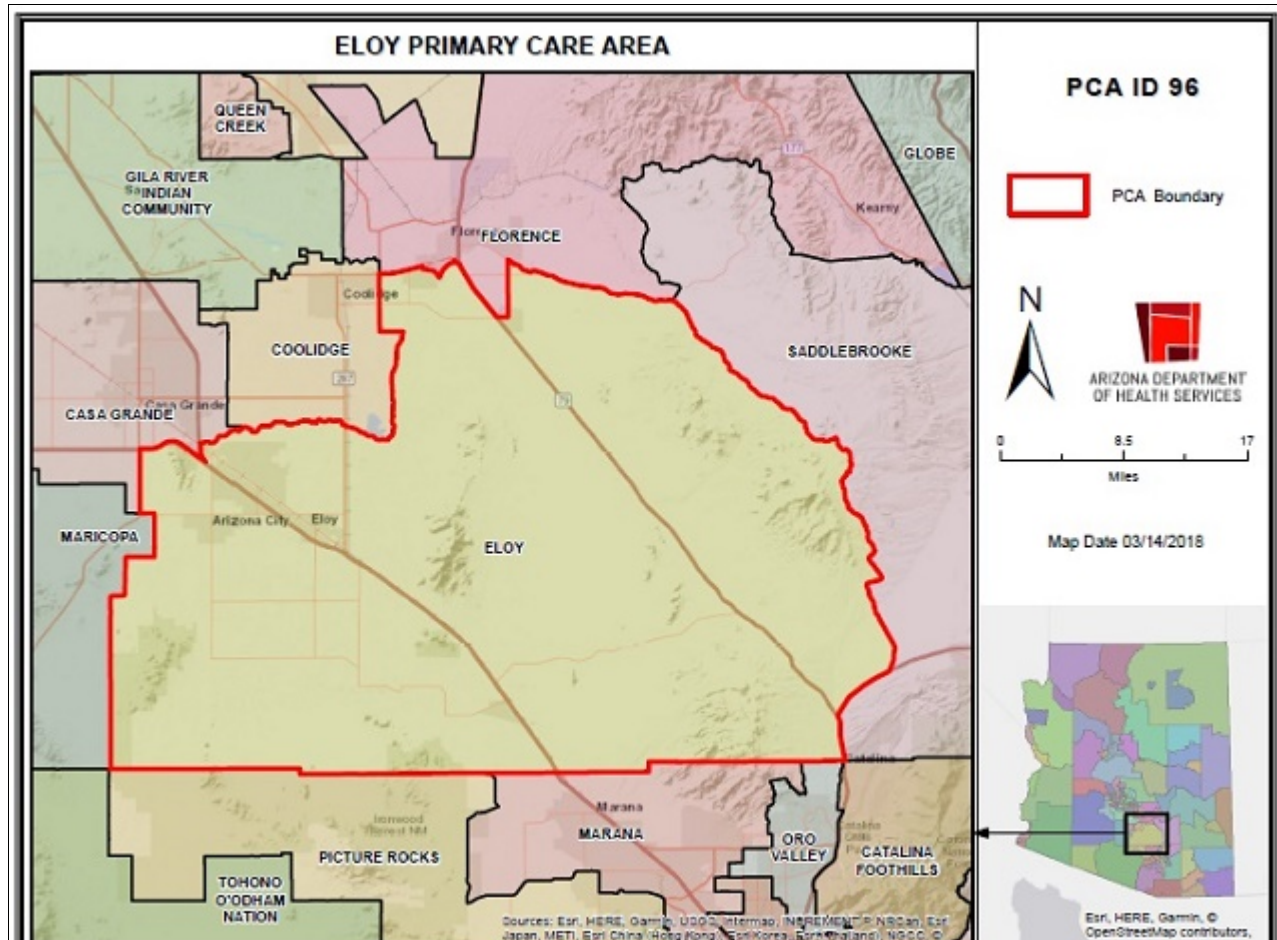


Eloy Primary Care Area (PCA) 2021 STATISTICAL PROFILE

For definitions and sources of data used in these profiles, see:

<http://www.azdhs.gov/documents/prevention/health-systems-development/data-reports-maps/reports/datadocu.pdf>

DESCRIPTION OF AREA	PCA Number	96
	Major Population Center	Eloy
	County	PINAL
	Health Planning Region	1
	Primary Care Score	36
	Rural Code Designation:	RURAL
	Special Tax District?	No
	State House Legislative District	16, 17
	Designated as AzMUA?	Yes
	Designated as Primary Care HPSA	P Low Inc., (Eloy)
	Designated as Federal MUA/P	50.50, MUP-Low Inc, (Central-West Pinal)
	Next Nearest Provider	Arizona City
	2nd Nearest Provider	Casa Grande
Travel Distance to Next Nearest Provider	8 miles	
Travel Distance to 2nd Nearest Provider...	14.89 miles	



DEMOGRAPHICS	Eloy	COUNTY	HEALTH PLANNING REGION	ARIZONA
POPULATION	38,147	439,128	5,000,072	7,285,370
Population Density	27.2	81.7	257.8	63.9
Persons By Age				
0-14	7,600	87,240	984,164	1,384,121
15-19	2,336	27,984	332,319	485,151
20-44	18,004	146,338	1,699,924	2,400,824
45-64	10,288	105,637	1,200,318	1,745,588
65-84	7,124	86,808	703,369	1,142,268
85 +	536	7,368	89,436	139,201
Race/Ethnicity				
White	64.8%	71.3%	75.5%	75.8%
American Indian	3.7%	4.7%	2.4%	4.0%
Black	7.3%	4.9%	5.0%	4.2%
Asian/Pacific Islander	5.8%	2.3%	3.6%	3.1%
Other	18.4%	16.8%	13.5%	12.9%
Hispanic	40.4%	28.5%	30.2%	30.5%
Communities of Color	53.2%	43.6%	46.3%	46.6%
Gender				
Females	40.4%	48.2%	50.3%	50.3%
Males	59.6%	51.8%	49.7%	49.7%
Single Parent Families	33.1%	21.8%	26.6%	26.9%
Female Headed Households	29.0%	22.6%	25.8%	26.4%
Disability Population	19.8%	16.1%	11.9%	13.2%
Speak Other Than English at Home	30.2%	20.9%	26.0%	26.7%
INCOME				
Population below 100% FPL	17.1%	12.1%	12.7%	14.1%
Population below 200% FPL	42.3%	32.2%	30.4%	33.0%
Median Household Income	\$55,029	\$57,477	\$72,322	\$62,115
Children <12 in Poverty	25.0%	16.9%	19.0%	20.7%
EDUCATION				
Less Than 9th Grade Education	13.5%	4.5%	5.1%	5.0%
9th-12th Grade, No Diploma	8.3%	8.4%	6.6%	7.0%
High School Graduate	31.5%	30.3%	23.2%	23.8%
Some College	24.7%	26.0%	24.2%	24.9%
College or Professional Degree Holder	21.7%	30.7%	40.9%	39.1%
MISCELLANEOUS				
Overnight Tourist Visits	143,514	1,667,394	20,490,645	49,599,807
Unemployed	21.3%	13.7%	8.4%	10.0%
"Uninsured" Births	2.4%	3.6%	1.9%	2.3%
Medicare Beneficiaries	95.9%	96.6%	95.9%	96.3%
Medically Uninsured	9.4%	8.7%	10.7%	10.6%
Transportation Score	116	101	107	113

RESOURCES	Eloy	COUNTY	HEALTH PLANNING REGION	ARIZONA
FACILITIES				
General Hospitals	Yes	4	40	71
Hospital Beds/1000 Residents	0.0	0.7	1.8	1.9
Designated as Sole Community Provider?	No	4	27	56
Specialty Beds	0	0	2,873	3,645
Skilled Nursing Facilities	0	2	68	102
Nursing Beds	0	134	7,866	11,632
SERVICES				
Licensed Home Health Agencies	0	3	116	179
Ambulatory Care Sites Type	A, D, E	A, B, C, D, E	A, B, C, D, E	A,B,C,D,E
Licensed Pharmacies	1	50	923	1,332
Certified Ambulance Services	1	5	36	106
PERSONNEL				
Primary Care Providers	5.0	160	6,760	9,751
Ratio-Population:Provider	7,629 :1	2,745:1	740 :1	747 :1
Nurse Practitioners	51	768	6,649	9,932
Physician Assistants	4	58	2,419	3,049
Registered Nurses	204	3,378	55,813	80,111
Midwives	0	10	188	312
Dentists	3	85	3,227	4,325
UTILIZATION				
AMBULATORY CARE SENSITIVE CONDITIONS				
ACSs/1000 Residents Age <65	30.0	36.0	33.8	34.5
Points Above/Below (-) Statewide Average	-4.6	1.5	-0.8	***
HOSPITALIZATION				
Inpatient Days/1000 Residents	592	583	566	570
Inpatient Days/1000 by Age Group:				
0-14 yrs	325	338	323	320
15-19 yrs	182	342	299	285
20-44 yrs	241	370	411	400
45-64 yrs	601	598	602	611
65-84 yrs	1,115	1,012	1,167	1,122
85+ yrs	1,970	1,475	1,841	1,815
Leading Diagnosis	Urinary tract infection,			
Leading Procedure	Performance of Urinary Filtration, Intermittent, Less th			
(Non-maternity related)				
*** Not Applicable, ++ Insufficient Data, ## Not Available				

HEALTH STATUS	Eloy	COUNTY	HEALTH PLANNING REGION	ARIZONA
INFANT MORTALITY RATE	++	5.2	5.6	5.7
MORTALITY, LEADING CAUSE OF DEATH				
Infant				Other ill-defined and unspecified causes of mortalit
Child (1-14)	++			
Adolescent (15-19)	++			
Young Adult (20-44)				Motor- or nonmotor-vehicle accident, type of vehicl
Mid Age (45-64)				Cardiac arrest
Elderly (65-84)				Cardiac arrest
Aged (85+)				Chronic ischaemic heart disease
PERCENT PREMATURE MORTALITY	67.4%	63.3%	54.6%	54.9%
NATALITY				
Fertility Rate/1000 Females 15-44 yrs	59.1	61.8	61.6	61.4
Birth Rate/1000 Residents	9.1	10.8	12.3	11.8
0-4 Prenatal Care Visits/1000 Births	62.2	49.5	50.6	66.5
Prenatal Care Began:				
None	4.5%	6.4%	5.8%	5.6%
Trimester One	69.8%	72.9%	72.5%	70.4%
Trimester Two	19.8%	16.0%	16.7%	18.1%
Trimester Three	5.7%	4.6%	4.9%	5.9%
Unknown	0.2%	0.1%	0.1%	0.0%
Low-weight Births/1000 Live Births	71.9	70.5	72.3	72.8
Teen Births/1000 Females 14-19 yrs	29.8	23.2	19.7	20.2

Area Location IDs:

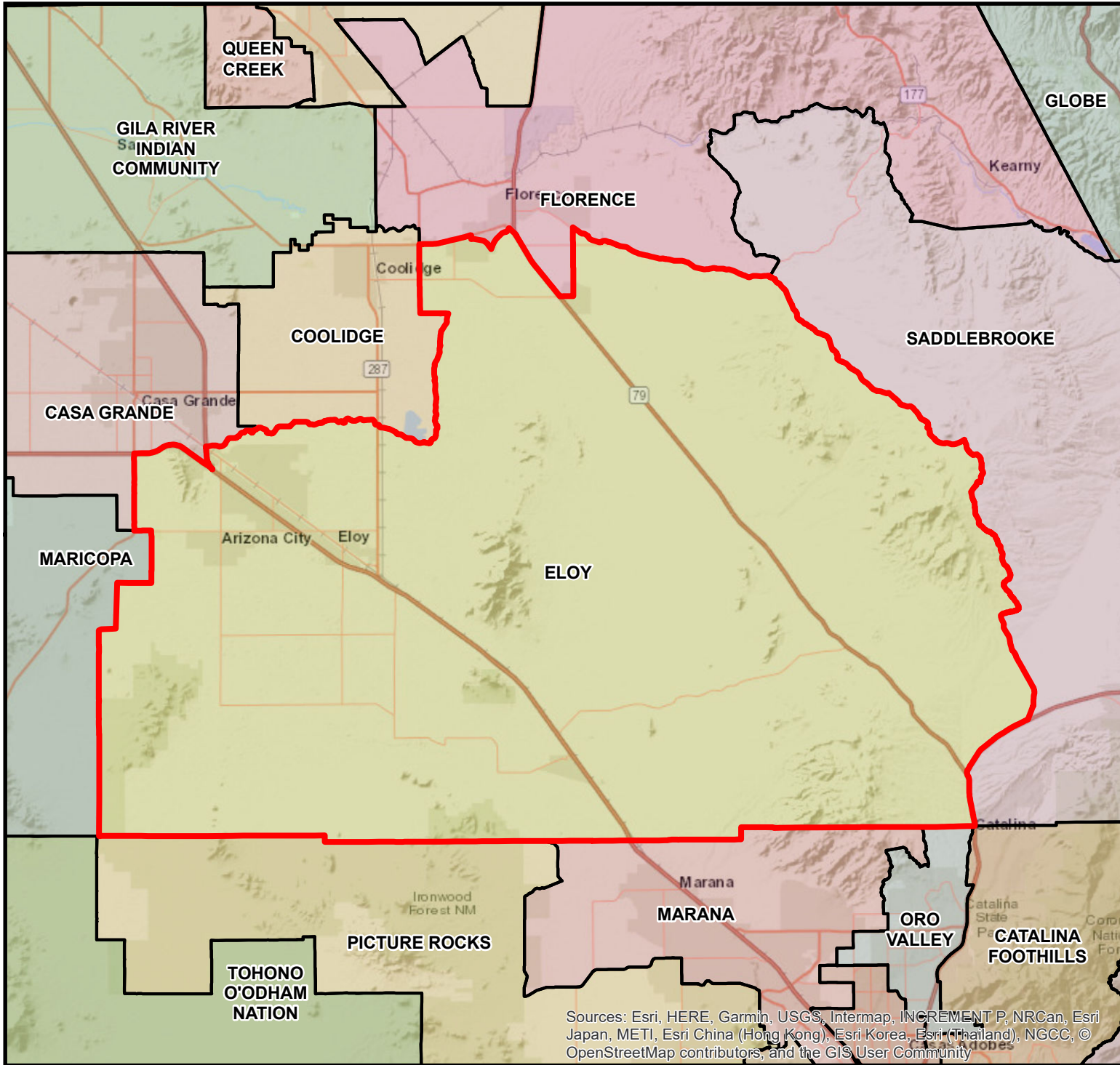
Census Tracts: 040210006.03, 040210008.02, 040210019.00, 040210020.01, 040210020.04, 040210020.05, 040210021.04, 040210021.05, 040210021.06, 040210021.07

Other Places in area:

Arizona City, Avra, Boy Farms, Eloy, Falcon Valley, Falcon Valley Ranch, Deep Well Ranch, Friendly Corners, Laguna, Nariska, Oracle Junction, Picacho Pass, Red Rock, Rock House, Toltec, Valley Farms, Wymola

*** Not Applicable, ++ Insufficient Data, ## Not Available

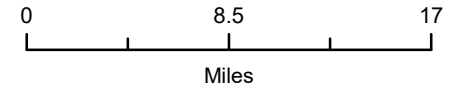
ELOY PRIMARY CARE AREA



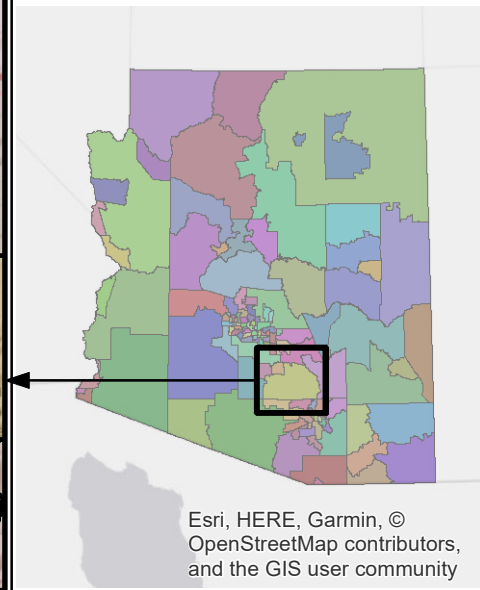
PCA ID 96



ARIZONA DEPARTMENT
OF HEALTH SERVICES



Map Date 03/14/2018



Sources: Esri, HERE, Garmin, USGS, Intermap, INCREMENT P, NRCan, Esri Japan, METI, Esri China (Hong Kong), Esri Korea, Esri (Thailand), NGCC, © OpenStreetMap contributors, and the GIS User Community

Esri, HERE, Garmin, © OpenStreetMap contributors, and the GIS user community