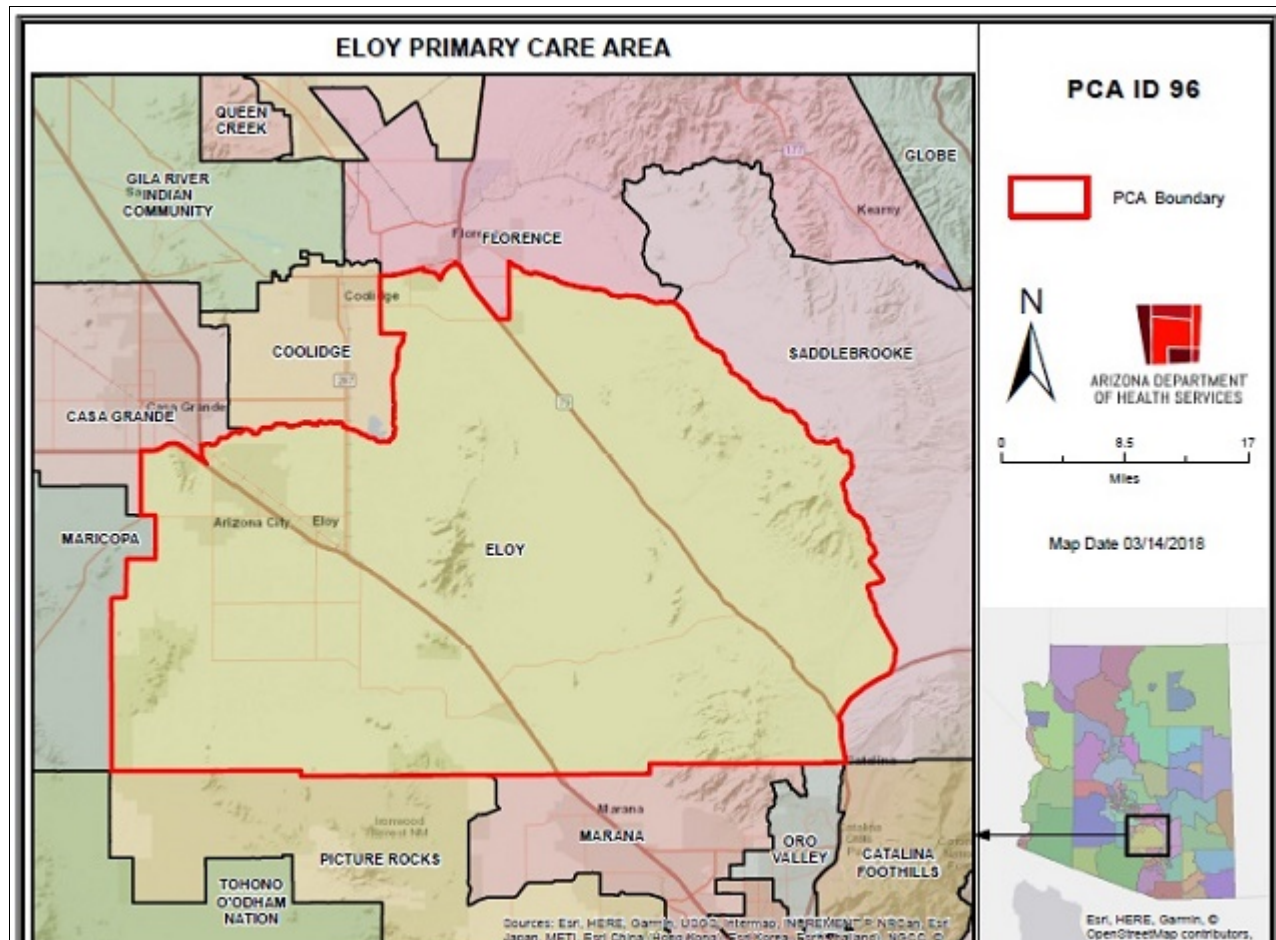


Casa Grande Primary Care Area (PCA) 2021 STATISTICAL PROFILE

For definitions and sources of data used in these profiles, see:

<http://www.azdhs.gov/documents/prevention/health-systems-development/data-reports-maps/reports/datadocu.pdf>

DESCRIPTION OF AREA	PCA Number	97
	Major Population Center	Casa Grande
	County	PINAL
	Health Planning Region	1
	Primary Care Score	32
	Rural Code Designation:	URBAN
	Special Tax District?	No
	State House Legislative District	16
	Designated as AzMUA?	Yes
	Designated as Primary Care HPSA	No
	Designated as Federal MUA/P	50.50, MUP-Low Inc, (Central-West Pinal)
	Next Nearest Provider	Arizona City
	2nd Nearest Provider	Sacaton
	Travel Distance to Next Nearest Provider	11.21 miles
	Travel Distance to 2nd Nearest Provider...	14.19 miles



DEMOGRAPHICS	Casa Grande	COUNTY	HEALTH PLANNING REGION	ARIZONA
POPULATION	65,595	439,128	5,000,072	7,285,370
Population Density	328.6	81.7	257.8	63.9
Persons By Age				
0-14	15,276	87,240	984,164	1,384,121
15-19	4,567	27,984	332,319	485,151
20-44	22,267	146,338	1,699,924	2,400,824
45-64	15,409	105,637	1,200,318	1,745,588
65-84	12,284	86,808	703,369	1,142,268
85 +	1,471	7,368	89,436	139,201
Race/Ethnicity				
White	72.7%	71.3%	75.5%	75.8%
American Indian	4.6%	4.7%	2.4%	4.0%
Black	4.2%	4.9%	5.0%	4.2%
Asian/Pacific Islander	2.0%	2.3%	3.6%	3.1%
Other	16.5%	16.8%	13.5%	12.9%
Hispanic	41.1%	28.5%	30.2%	30.5%
Communities of Color	53.5%	43.6%	46.3%	46.6%
Gender				
Females	49.0%	48.2%	50.3%	50.3%
Males	51.0%	51.8%	49.7%	49.7%
Single Parent Families	29.9%	21.8%	26.6%	26.9%
Female Headed Households	25.4%	22.6%	25.8%	26.4%
Disability Population	18.8%	16.1%	11.9%	13.2%
Speak Other Than English at Home	26.6%	20.9%	26.0%	26.7%
INCOME				
Population below 100% FPL	15.7%	12.1%	12.7%	14.1%
Population below 200% FPL	39.0%	32.2%	30.4%	33.0%
Median Household Income	\$52,778	\$57,477	\$72,322	\$62,115
Children <12 in Poverty	24.1%	16.9%	19.0%	20.7%
EDUCATION				
Less Than 9th Grade Education	10.2%	4.5%	5.1%	5.0%
9th-12th Grade, No Diploma	5.7%	8.4%	6.6%	7.0%
High School Graduate	32.3%	30.3%	23.2%	23.8%
Some College	24.0%	26.0%	24.2%	24.9%
College or Professional Degree Holder	27.9%	30.7%	40.9%	39.1%
MISCELLANEOUS				
Overnight Tourist Visits	245,900	1,667,394	20,490,645	49,599,807
Unemployed	12.7%	13.7%	8.4%	10.0%
"Uninsured" Births	2.8%	3.6%	1.9%	2.3%
Medicare Beneficiaries	96.2%	96.6%	95.9%	96.3%
Medically Uninsured	10.7%	8.7%	10.7%	10.6%
Transportation Score	113	101	107	113

RESOURCES	Casa Grande	COUNTY	HEALTH PLANNING REGION	ARIZONA
FACILITIES				
General Hospitals	Yes	4	40	71
Hospital Beds/1000 Residents	2.1	0.7	1.8	1.9
Designated as Sole Community Provider?	Yes	4	27	56
Specialty Beds	0	0	2,873	3,645
Skilled Nursing Facilities	1	2	68	102
Nursing Beds	134	134	7,866	11,632
SERVICES				
Licensed Home Health Agencies	2	3	116	179
Ambulatory Care Sites Type	A, B, C, D, E	A, B, C, D, E	A, B, C, D, E	A,B,C,D,E
Licensed Pharmacies	13	50	923	1,332
Certified Ambulance Services	1	5	36	106
PERSONNEL				
Primary Care Providers	54.0	160	6,760	9,751
Ratio-Population:Provider	1,215 :1	2,745:1	740 :1	747 :1
Nurse Practitioners	117	768	6,649	9,932
Physician Assistants	19	58	2,419	3,049
Registered Nurses	538	3,378	55,813	80,111
Midwives	1	10	188	312
Dentists	27	85	3,227	4,325
UTILIZATION				
AMBULATORY CARE SENSITIVE CONDITIONS				
ACs/1000 Residents Age <65	39.8	36.0	33.8	34.5
Points Above/Below (-) Statewide Average	5.2	1.5	-0.8	***
HOSPITALIZATION				
Inpatient Days/1000 Residents	639	583	566	570
Inpatient Days/1000 by Age Group:				
0-14 yrs	305	338	323	320
15-19 yrs	354	342	299	285
20-44 yrs	424	370	411	400
45-64 yrs	663	598	602	611
65-84 yrs	1,123	1,012	1,167	1,122
85+ yrs	1,387	1,475	1,841	1,815
Leading Diagnosis	Urinary tract infection,			
Leading Procedure	Insertion of Infusion Device into Superior Vena Cava, Pe			
(Non-maternity related)				
*** Not Applicable, ++ Insufficient Data, ## Not Available				

HEALTH STATUS	Casa Grande	COUNTY	HEALTH PLANNING REGION	ARIZONA
INFANT MORTALITY RATE	6.5	5.2	5.6	5.7
MORTALITY, LEADING CAUSE OF DEATH				
Infant	Disorders related to short gestation and low birth w			
Child (1-14)	Unspecified multiple injuries			
Adolescent (15-19)	Open wound of head			
Young Adult (20-44)	Poisoning by narcotics and psychodysleptics [hallu			
Mid Age (45-64)	Cardiac arrest			
Elderly (65-84)	Cardiac arrest			
Aged (85+)	Chronic ischaemic heart disease			
PERCENT PREMATURE MORTALITY	60.7%	63.3%	54.6%	54.9%
NATALITY				
Fertility Rate/1000 Females 15-44 yrs	67.1	61.8	61.6	61.4
Birth Rate/1000 Residents	12.0	10.8	12.3	11.8
0-4 Prenatal Care Visits/1000 Births	55.1	49.5	50.6	66.5
Prenatal Care Began:				
None	4.2%	6.4%	5.8%	5.6%
Trimester One	73.0%	72.9%	72.5%	70.4%
Trimester Two	17.5%	16.0%	16.7%	18.1%
Trimester Three	5.1%	4.6%	4.9%	5.9%
Unknown	0.2%	0.1%	0.1%	0.0%
Low-weight Births/1000 Live Births	71.2	70.5	72.3	72.8
Teen Births/1000 Females 14-19 yrs	28.3	23.2	19.7	20.2

Area Location IDs:

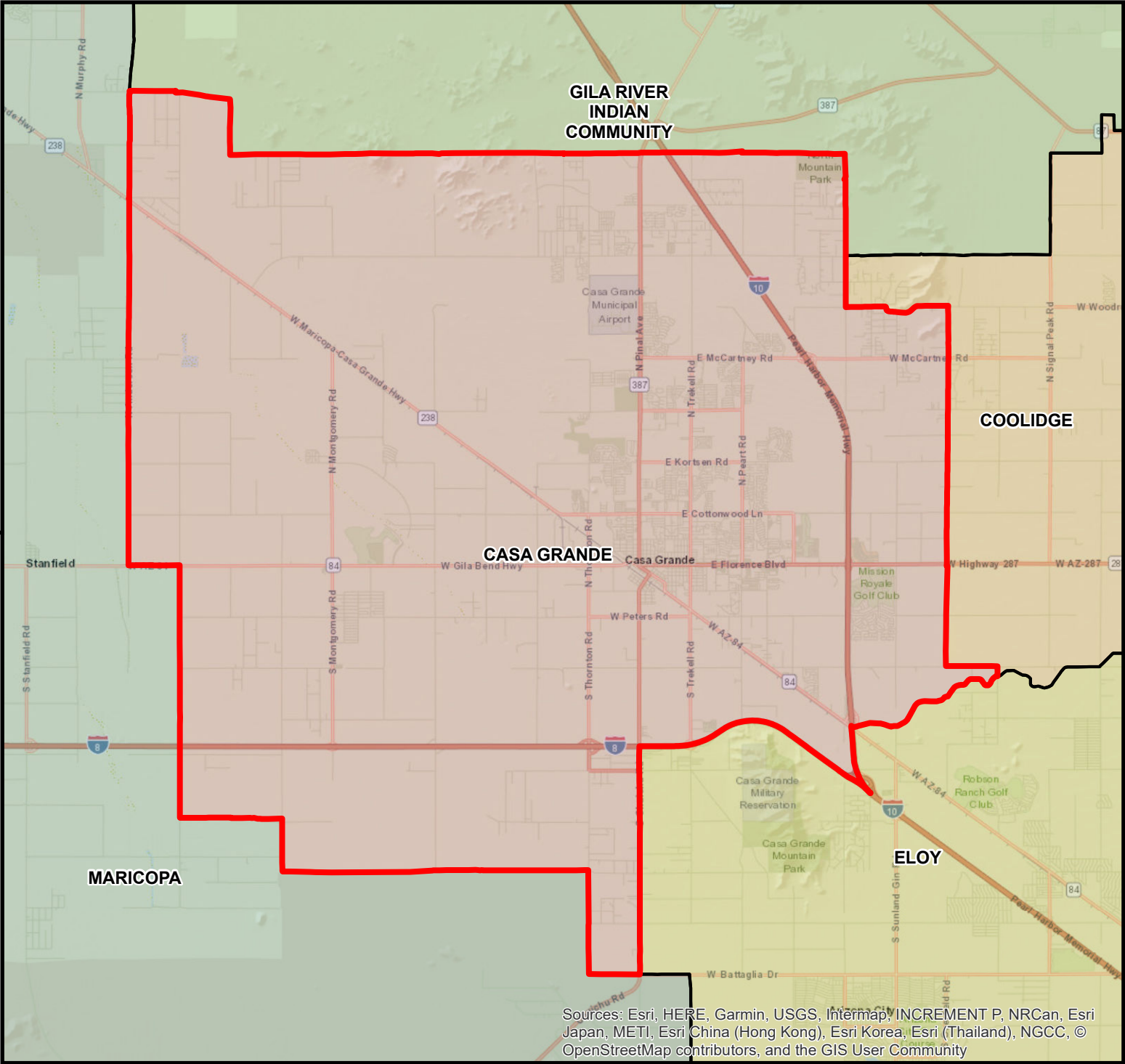
Census Tracts: 040210013.03, 040210013.05, 040210013.06, 040210013.07, 040210013.08, 040210013.09, 040210013.10, 040210014.03, 040210014.04, 040210014.05, 040210014.06, 040210014.07, 040210014.08, 040210015.00, 040210016.00, 040219413.00

Other Places in area:

Arizola, Blue Water, Bon, Casa Grande, Francisco Grande

*** Not Applicable, ++ Insufficient Data, ## Not Available

CASA GRANDE PRIMARY CARE AREA



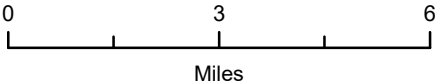
PCA ID 97



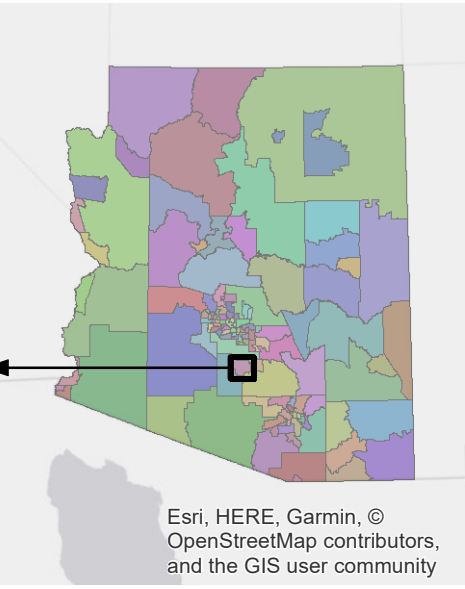
PCA Boundary



ARIZONA DEPARTMENT
OF HEALTH SERVICES



Map Date 03/14/2018



Sources: Esri, HERE, Garmin, USGS, Intermap, INCREMENT P, NRCan, Esri Japan, METI, Esri China (Hong Kong), Esri Korea, Esri (Thailand), NGCC, © OpenStreetMap contributors, and the GIS User Community

Esri, HERE, Garmin, © OpenStreetMap contributors, and the GIS user community