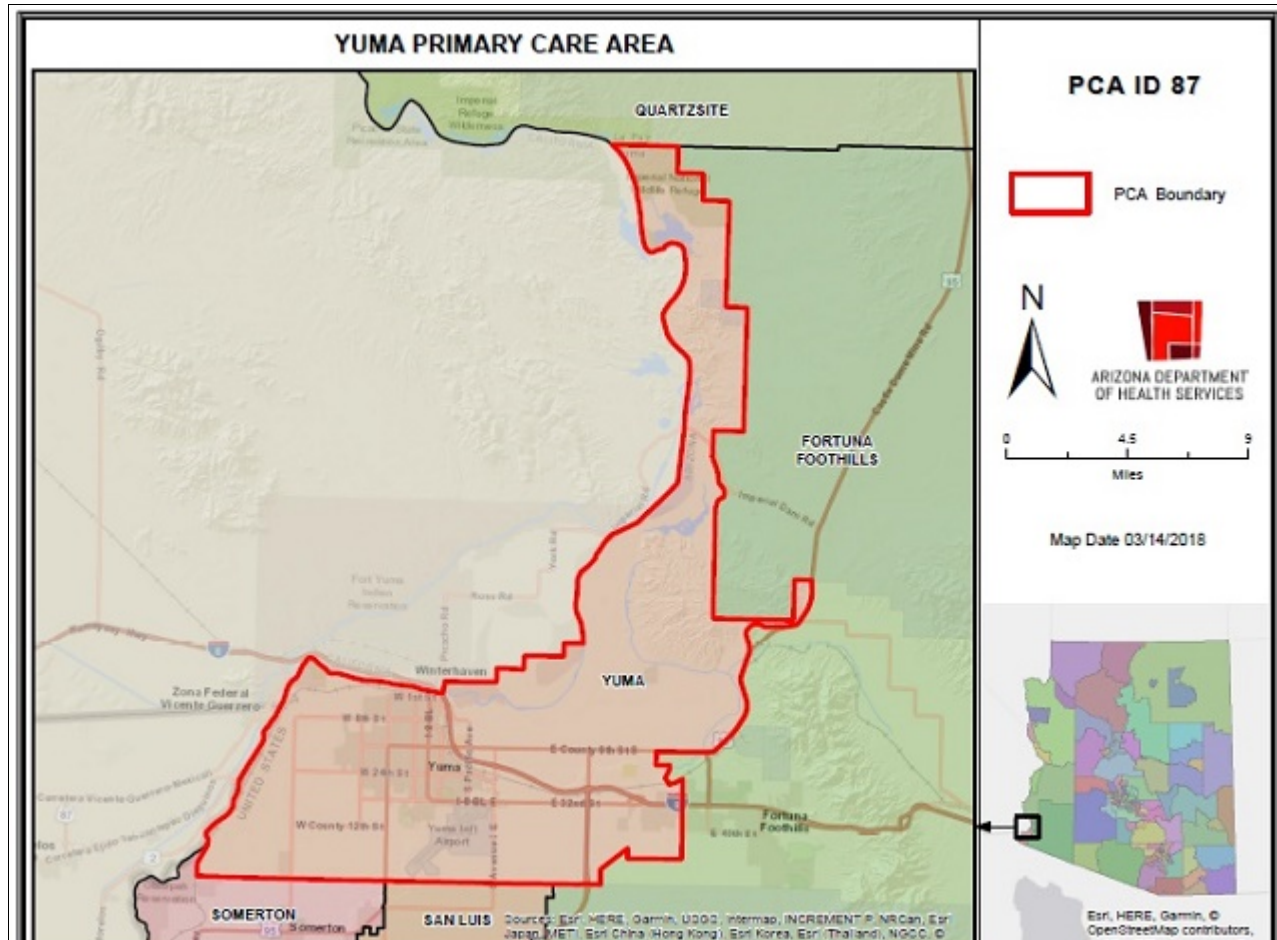


Yuma Primary Care Area (PCA) 2021 STATISTICAL PROFILE

For definitions and sources of data used in these profiles, see:

<http://www.azdhs.gov/documents/prevention/health-systems-development/data-reports-maps/reports/datadocu.pdf>

DESCRIPTION OF AREA	PCA Number	87
	Major Population Center	Yuma
	County	YUMA
	Health Planning Region	4
	Primary Care Score	29
	Rural Code Designation:	RURAL
	Special Tax District?	No
	State House Legislative District	23, 25
	Designated as AzMUA?	Yes
	Designated as Primary Care HPSA	P Low Inc., (Yuma)
	Designated as Federal MUA/P	53.20, MUA, (Yuma North), 47.60, MUA, (Yuma-West)
	Next Nearest Provider	Somerton
	2nd Nearest Provider	Gadsden
	Travel Distance to Next Nearest Provider	13.24 miles
	Travel Distance to 2nd Nearest Provider...	20.22 miles

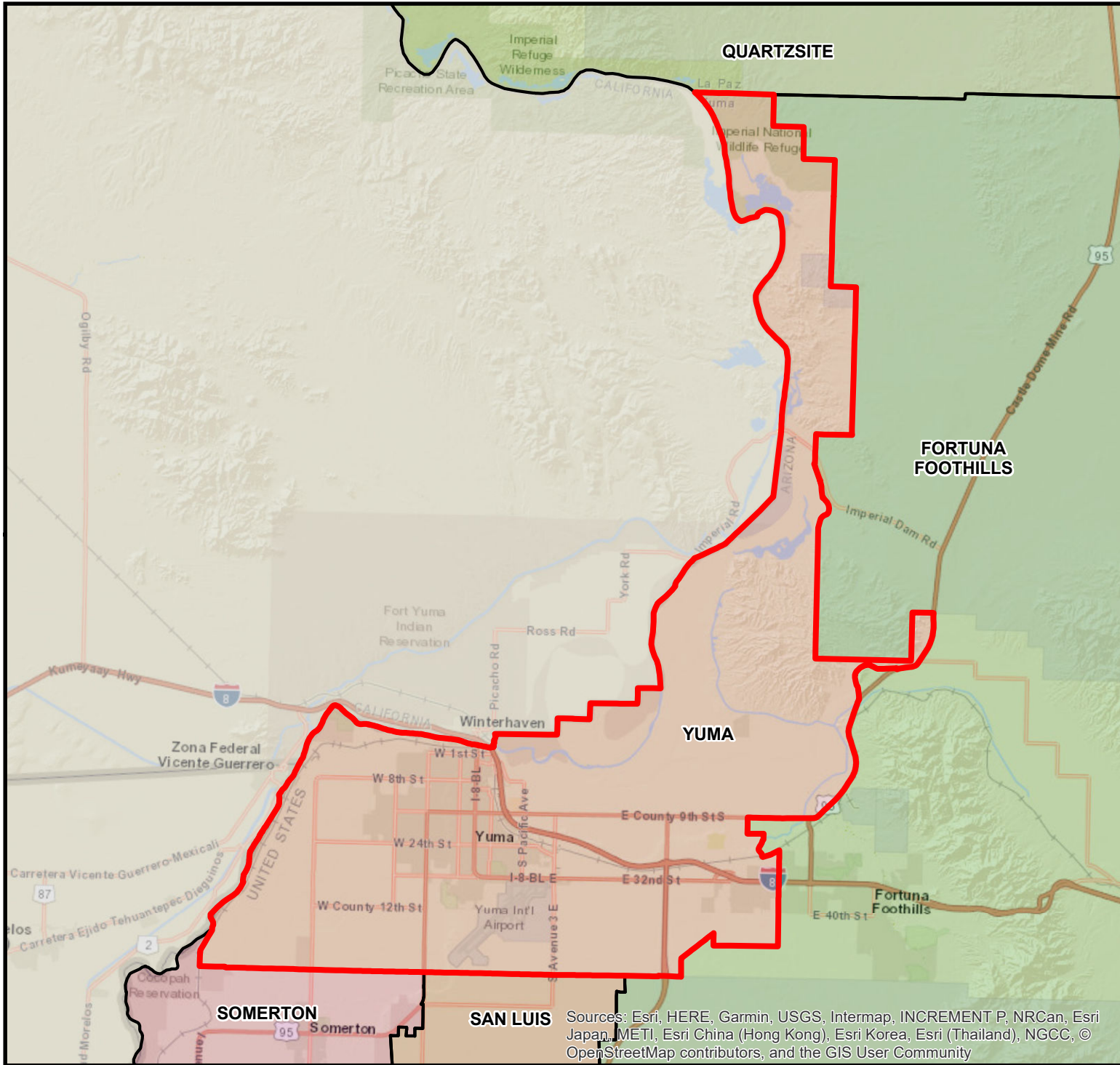


DEMOGRAPHICS	Yuma	COUNTY	HEALTH PLANNING REGION	ARIZONA
POPULATION	116,695	207,318	440,665	7,285,370
Population Density	608.1	37.6	18.8	63.9
Persons By Age				
0-14	26,308	45,300	78,126	1,384,121
15-19	7,899	15,209	25,929	485,151
20-44	42,286	71,350	126,554	2,400,824
45-64	22,526	42,557	105,223	1,745,588
65-84	17,653	36,360	103,135	1,142,268
85 +	2,311	4,381	10,812	139,201
Race/Ethnicity				
White	69.9%	72.3%	80.5%	75.8%
American Indian	1.7%	1.5%	2.3%	4.0%
Black	2.4%	2.0%	1.4%	4.2%
Asian/Pacific Islander	2.0%	1.3%	1.2%	3.1%
Other	24.0%	22.9%	14.6%	12.9%
Hispanic	61.8%	63.9%	38.8%	30.5%
Communities of Color	69.2%	70.0%	46.9%	46.6%
Gender				
Females	48.6%	48.4%	49.0%	50.3%
Males	51.4%	51.6%	51.0%	49.7%
Single Parent Families	29.3%	26.7%	25.7%	26.9%
Female Headed Households	25.7%	25.0%	25.5%	26.4%
Disability Population	12.7%	12.6%	17.8%	13.2%
Speak Other Than English at Home	48.0%	54.0%	31.4%	26.7%
INCOME				
Population below 100% FPL	17.8%	18.2%	17.4%	14.1%
Population below 200% FPL	41.5%	44.5%	41.5%	33.0%
Median Household Income	\$52,038	\$49,992	\$45,335	\$62,115
Children <12 in Poverty	26.8%	27.6%	27.6%	20.7%
EDUCATION				
Less Than 9th Grade Education	10.8%	13.3%	8.0%	5.0%
9th-12th Grade, No Diploma	10.4%	12.0%	10.8%	7.0%
High School Graduate	26.0%	26.6%	30.9%	23.8%
Some College	25.2%	24.8%	27.5%	24.9%
College or Professional Degree Holder	27.5%	23.1%	22.5%	39.1%
MISCELLANEOUS				
Overnight Tourist Visits	1,872,718	3,337,600	7,099,748	49,599,807
Unemployed	15.5%	15.9%	16.5%	10.0%
"Uninsured" Births	1.9%	2.2%	2.3%	2.3%
Medicare Beneficiaries	94.2%	93.8%	96.3%	96.3%
Medically Uninsured	10.7%	12.5%	11.0%	10.6%
Transportation Score	106	106	126	113

RESOURCES	Yuma	COUNTY	HEALTH PLANNING REGION	ARIZONA
FACILITIES				
General Hospitals	Yes	1	6	71
Hospital Beds/1000 Residents	3.5	2.0	2.4	1.9
Designated as Sole Community Provider?	Yes	1	4	56
Specialty Beds	51	51	93	3,645
Skilled Nursing Facilities	3	3	4	102
Nursing Beds	304	304	392	11,632
SERVICES				
Licensed Home Health Agencies	4	4	14	179
Ambulatory Care Sites Type	A, B, C, D, E	A, B, C, D, E	A, B, C, D, E	A,B,C,D,E
Licensed Pharmacies	20	29	76	1,332
Certified Ambulance Services	3	6	14	106
PERSONNEL				
Primary Care Providers	179.0	195	497	9,751
Ratio-Population:Provider	652 :1	1,063:1	887 :1	747 :1
Nurse Practitioners	123	179	601	9,932
Physician Assistants	42	53	115	3,049
Registered Nurses	1,161	1,586	3,698	80,111
Midwives	9	11	16	312
Dentists	40	50	130	4,325
UTILIZATION				
AMBULATORY CARE SENSITIVE CONDITIONS				
ACSs/1000 Residents Age <65	37.5	31.6	44.3	34.5
Points Above/Below (-) Statewide Average	2.9	-3.0	9.7	***
HOSPITALIZATION				
Inpatient Days/1000 Residents	658	627	615	570
Inpatient Days/1000 by Age Group:				
0-14 yrs	336	305	286	320
15-19 yrs	302	240	221	285
20-44 yrs	347	335	318	400
45-64 yrs	874	758	661	611
65-84 yrs	1,439	1,284	1,089	1,122
85+ yrs	2,377	2,070	1,791	1,815
Leading Diagnosis	Viral infection, unspecif			
Leading Procedure	Insertion of Infusion Device into Superior Vena Cava, Pe (Non-maternity related)			
*** Not Applicable, ++ Insufficient Data, ## Not Available				

HEALTH STATUS	Yuma	COUNTY	HEALTH PLANNING REGION	ARIZONA
INFANT MORTALITY RATE	6.5	6.1	6.1	5.7
MORTALITY, LEADING CAUSE OF DEATH				
Infant				Fetus and newborn affected by maternal complicat
Child (1-14)				Unspecified drowning and submersion
Adolescent (15-19)				Poisoning by diuretics and other and unspecified d
Young Adult (20-44)				Accidental poisoning by and exposure to other and
Mid Age (45-64)				Respiratory failure, not elsewhere classified
Elderly (65-84)				Chronic ischaemic heart disease
Aged (85+)				Respiratory failure, not elsewhere classified
PERCENT PREMATURE MORTALITY	55.1%	55.2%	58.5%	54.9%
NATALITY				
Fertility Rate/1000 Females 15-44 yrs	74.3	72.5	66.3	61.4
Birth Rate/1000 Residents	14.6	13.8	10.9	11.8
0-4 Prenatal Care Visits/1000 Births	90.4	126.2	101.8	66.5
Prenatal Care Began:				
None	4.2%	5.6%	6.7%	5.6%
Trimester One	64.2%	59.1%	62.2%	70.4%
Trimester Two	21.5%	23.0%	21.3%	18.1%
Trimester Three	9.9%	12.0%	9.5%	5.9%
Unknown	0.2%	0.3%	0.3%	0.0%
Low-weight Births/1000 Live Births	61.0	61.0	63.7	72.8
Teen Births/1000 Females 14-19 yrs	27.2	27.5	25.0	20.2
Area Location IDs:				
<small>Census Tracts: 040270001.00, 040270002.00, 040270003.01, 040270003.02, 040270004.02, 040270004.03, 040270004.04, 040270005.01, 040270005.02, 040270006.00, 040270007.00, 040270008.00, 040270009.01, 040270009.02, 040270009.03, 040270009.07, 040270009.08, 040270009.09, 040270009.10, 040270010.01, 040270010.03, 040270010.04, 040270011.00, 040270012.00, 040270109.11, 040270109.13, 040270109.14, 040270110.00, 040270111.07, 040270111.16, 040270111.17, 040270111.20, 040270111.21, 040270117.00, 040279800.06</small>				
Other Places in area:				
Blaisdell, Blalack, Fishers Landing, Gila Center, Harwood, Kool Corner, Laguna, Luding Siding, Steam, Yuma				
*** Not Applicable, ++ Insufficient Data, ## Not Available				

YUMA PRIMARY CARE AREA



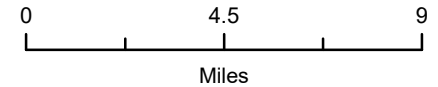
PCA ID 87



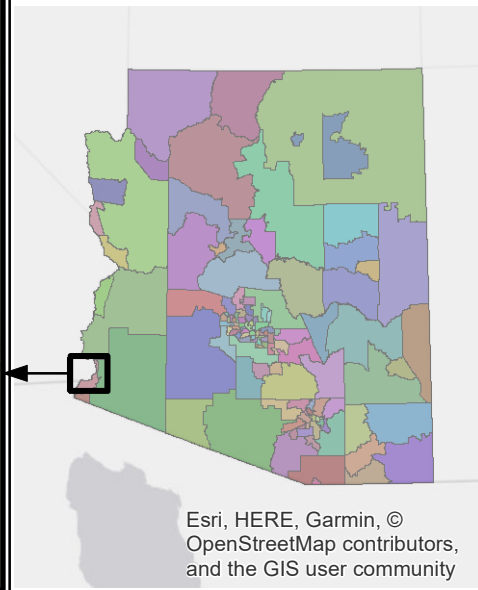
PCA Boundary



ARIZONA DEPARTMENT
OF HEALTH SERVICES



Map Date 03/14/2018



Sources: Esri, HERE, Garmin, USGS, Intermap, INCREMENT P, NRCan, Esri Japan, METI, Esri China (Hong Kong), Esri Korea, Esri (Thailand), NGCC, © OpenStreetMap contributors, and the GIS User Community

Esri, HERE, Garmin, ©
OpenStreetMap contributors,
and the GIS user community