

# Arizona Maternal Deaths

Whether or not it's called a pandemic,

**& COVID-19**

COVID-19 remains an active concern.

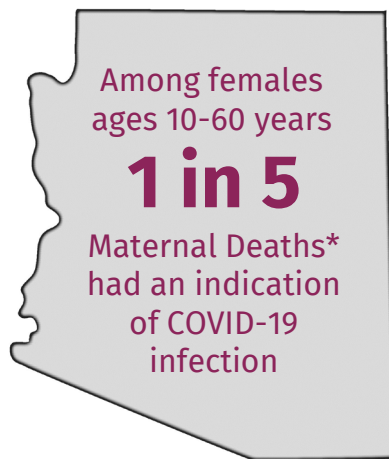
During pregnancy, COVID-19 can lead to...

Stillbirth

Preterm birth

ICU Admission

Death



28,372 AZ deaths were related to COVID-19 of which 11,597 (41%) were among females.

COVID-19 Status:  
Among Maternal Deaths in AZ...



Hispanic or AI/AN\* women were over **2x** more likely to be COVID+ compared to other racial/ethnic groups



Women 36-60 years of age were nearly **3x** more likely to be COVID+ compared to women 10-35 years of age



Vaccination is the most effective way to prevent COVID-19 infection.

You can also protect yourself and your baby in the following ways:



Avoid large gatherings



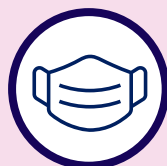
Cover coughs & sneezes with a tissue or elbow



Use alcohol-based hand sanitizer



Wash hands for 20 seconds with soap & water



Wear a mask in public



Keep a 6-foot distance from others in public

\*Maternal deaths: Pregnant during death or within 365 days of death (death record review from January 2020-April 2022, cases have not gone through a formal review process to confirm pregnancy association). AI/AN: American Indian/Alaska Native.

For more information, visit:

[www.azdhs.gov](http://www.azdhs.gov)  
<https://www.cdc.gov/coronavirus/2019ncov/vaccines/recommendations/pregnancy.html>

Email:

[maternalhealth@azdhs.gov](mailto:maternalhealth@azdhs.gov)



ARIZONA DEPARTMENT OF HEALTH SERVICES

