

Arizona Medical Marijuana Program August 2019 Monthly Report

In December 2010, Arizona voters passed the Arizona Medical Marijuana Act (AMMA), A.R.S. §36-2801 *et seq.* The AMMA went into effect on April 14, 2011, making Arizona the fourteenth state to adopt a medical marijuana law. The AMMA designates the Arizona Department of Health Services (ADHS) as the licensing and issuing authority for the Arizona Medical Marijuana Program.

The AMMA monthly report highlights the most current program statistics. This includes data on active medical marijuana cardholders as well as transaction data from the sale of medical marijuana at non-profit medical marijuana dispensaries. Tables 1 through 6 and Figures 1 through 3 reflect data that are point-in-time. Table 7 and Figure 4 are data from the month of August, 2019. The Year-To-Date section which follows shows cumulative applications and approvals for 2019. For further information and statistics, please reference the Arizona Medical Marijuana Annual Report.

Table 1. Arizona Medical Marijuana Active Qualifying Patients, Designated Caregivers and Dispensary Agents Profile

Active Cardholder's Profile	Totals	Percent Total
1. Qualifying patients (QPs)	204,271	96.57%
2. Caregivers (CGs)	728	0.34%
3. Dispensary Agents (DA)	6,521	3.08%
Total	211,520	100.00%

*Note: For caregivers and dispensary agents, these data reflect unique individuals, not the number of cards.

Table 2. Arizona Medical Marijuana Active Qualifying Patients Profile

Application profile of qualifying patients	Totals	Percent Total
1. New applications	116,092	56.83%
2. Renewal applications	79,734	39.03%
3. Changed demographics	3,531	1.73%
4. Added Caregivers	165	0.08%
5. Change Dup	4,727	2.31%
6. Replaced Caregivers	17	0.01%
7. Removed Caregivers	5	0.00%
Total	204,271	100.00%

Approximately 11 percent (n = 23,265) of the active cardholders were determined to be SNAP eligible. Of the 23,265 that were determined to be eligible, 12,035 (~52%) were females and 11,230 (~48%) were males.

Table 3. Arizona Medical Marijuana Active Qualifying Patients Characteristics

Characteristics of Active Cardholders who are Qualified Patients	Totals (N =204,271)	Percent Total
Patient Age-groups		
Less than 18 years	179	0.09%
18 to 30 years	49,488	24.23%
31 to 40 years	43,154	21.13%
41 to 50 years	32,801	16.06%
51 to 60 years	32,238	15.78%
61 to 70 years	32,909	16.11%
71 to 80 years	11,477	5.62%
81 and older	2,025	0.99%
Patient Gender		
Male	121,215	59.34%
Female	83,056	40.66%

Figure 1. Arizona Medical Marijuana Active Qualifying Patients Characteristics by Gender and Age (N = 204,271)

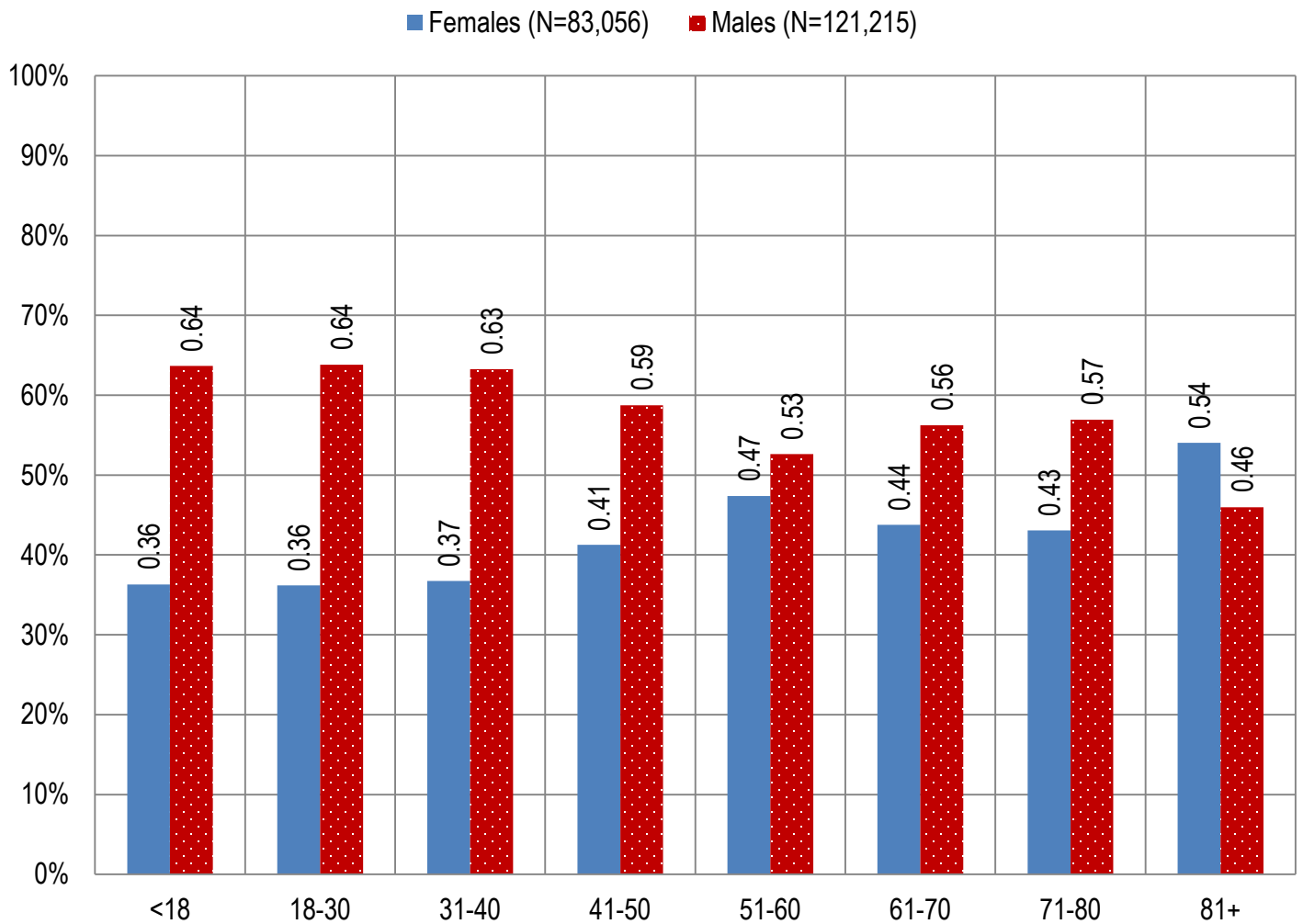


Table 4. Arizona Medical Marijuana Active Qualifying Patients Medical Condition Profile

Patient medical condition profile of Active Cardholders [¶]	Totals	Percent Total
Alzheimer's	100	0.05%
Cachexia	125	0.06%
Cancer	3,969	1.94%
Chronic Pain	181,646	88.92%
Crohn's Disease	629	0.31%
Glaucoma	1,079	0.53%
Hepatitis C	696	0.34%
HIV/AIDS	713	0.35%
Muscle Spasms	917	0.45%
Nausea	782	0.38%
Post-Traumatic Stress Disorder (PTSD)	2,406	1.18%
Sclerosis	28	0.01%
Seizures	1,182	0.58%
Two Or More Conditions	9,999	4.89%
TOTAL	204,271	100.00%

[¶]Unique debilitating conditions

Figure 2. Arizona Medical Marijuana Active Designated Caregiver Characteristics by Gender and Age (N = 728)

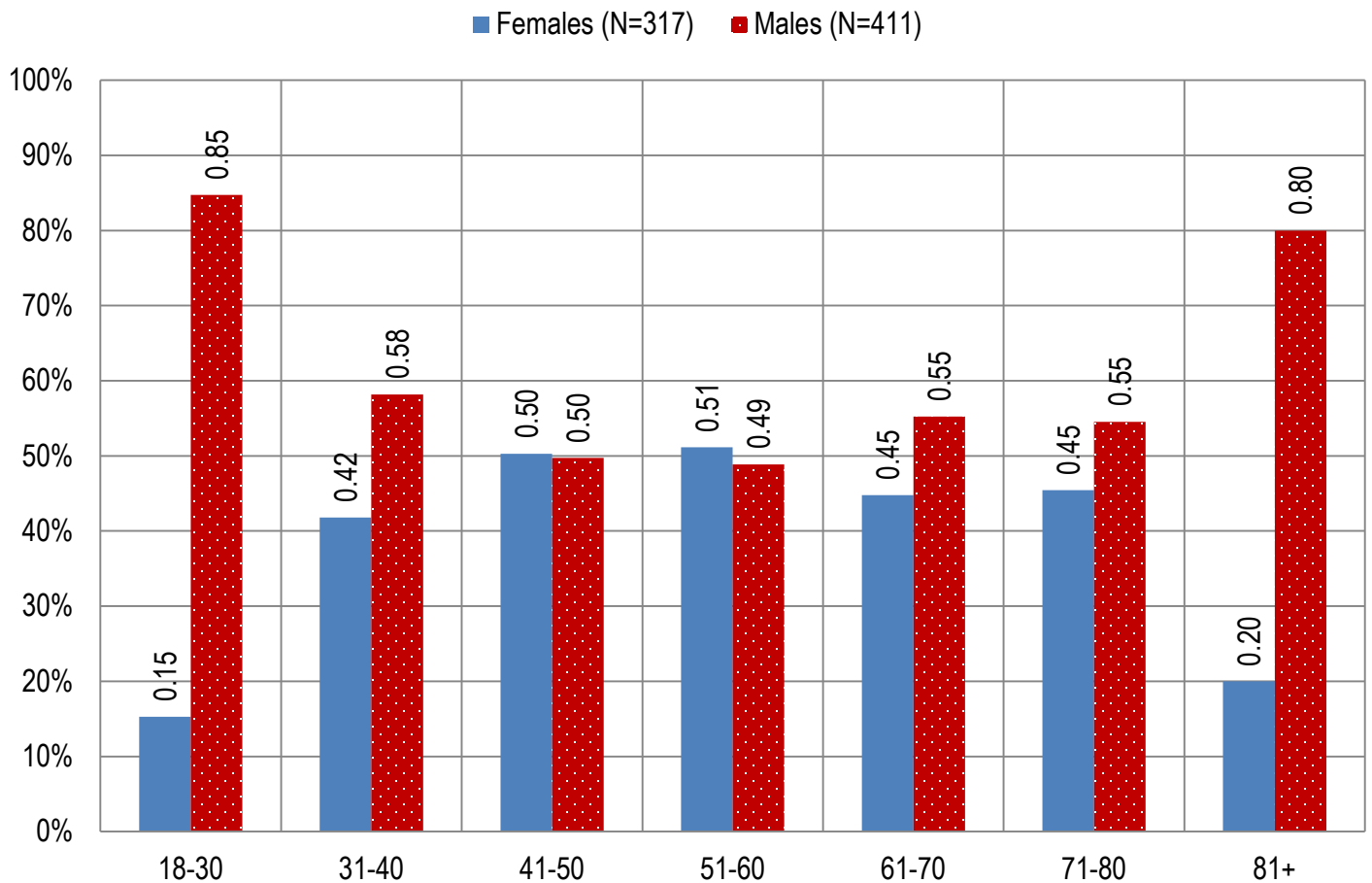


Table 5. Arizona Medical Marijuana Active Qualifying Patients and Designated Caregivers Authorized for Cultivation

Active cardholders cultivation status	Totals	Percent Total
Qualifying patients (n =204,271)	2,301	1.13%
Caregivers (n =728)	282	38.74%

Table 6. Frequency of Qualifying Patients, Caregivers, and Dispensary Agents by County of Residence

County	Qualifying Patients	Caregivers	Dispensary Agents*
Apache County	845	Count under 20	25
Cochise County	3,009	Count under 20	231
Coconino County	4,046	29	141
Gila County	1,825	Count under 20	34
Graham County	825	Count under 20	Count under 20
Greenlee County	204	Count under 20	Count under 20
La Paz County	318	Count under 20	Count under 20
Maricopa County	132,832	409	3,977
Mohave County	4,947	Count under 20	210
Navajo County	2,464	Count under 20	304
Pima County	27,921	122	649
Pinal County	12,483	32	247
Santa Cruz County	636	Count under 20	181
Yavapai County	10,224	47	397
Yuma County	1,692	Count under 20	Count under 20
TOTAL	204,271	728	6,521

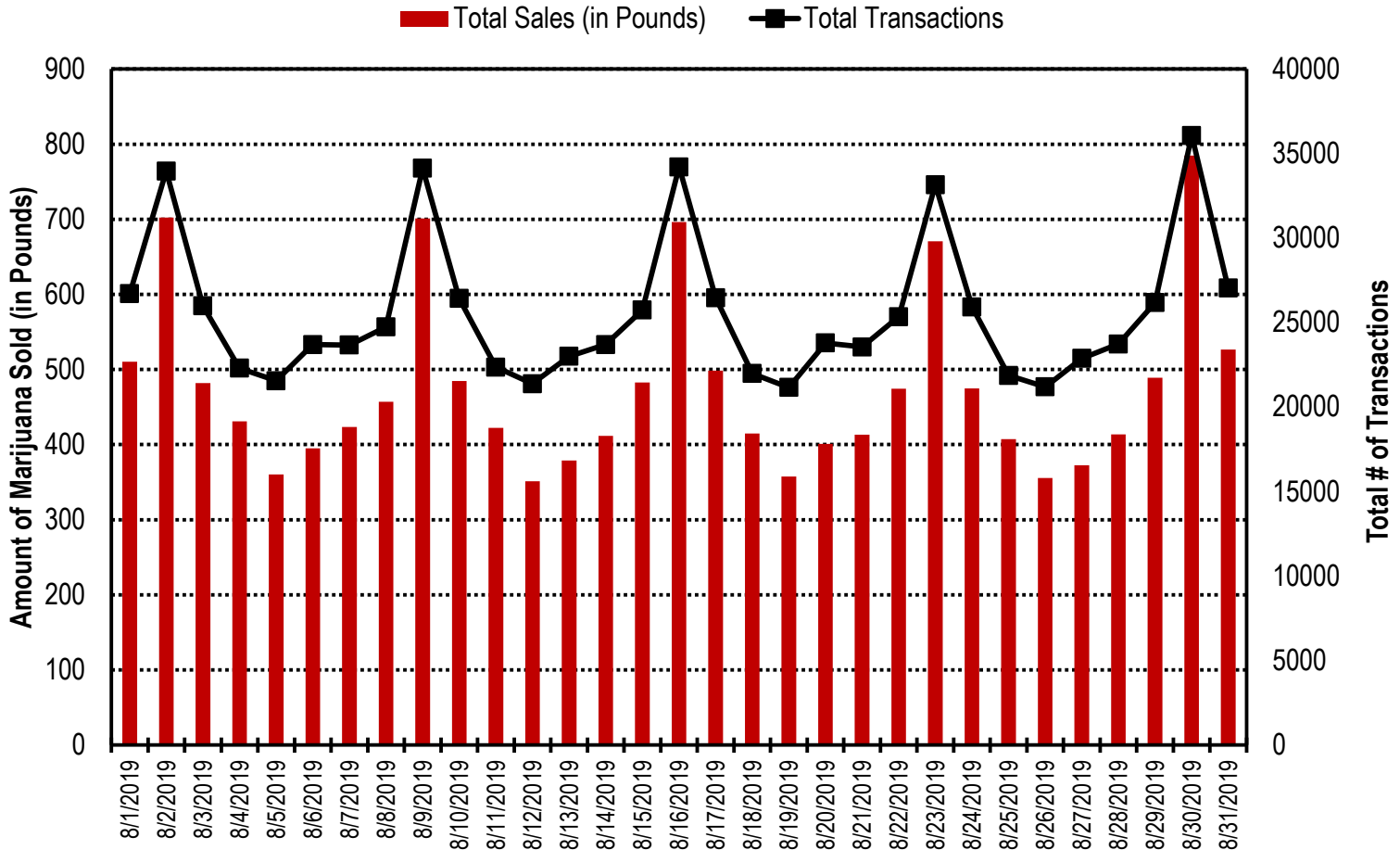
* 81 Dispensary Agents are located outside of Arizona.

Table 7. Type and Amount of Transactions at Medical Marijuana Dispensaries in August, 2019

Type of Transaction [†]	Ounces (oz.)	Pounds
Marijuana	213,873.87	13,367.12
Marijuana Edible	7,953.02	497.06
Marijuana Other	14,095.69	880.98
Total Marijuana Sold	235,922.59	14,745.16

[†] Amounts have been rounded and may not added to exact totals

Figure 4. Daily Transactions and Amount of Marijuana Sold in August, 2019



YEAR TO DATE

Table 1a. Arizona Medical Marijuana Applications Received- Application Profile

Applications Received Cardholder Profile	Totals	Percent Total
Qualifying patients (QPs)	156,884	94.76%
Caregivers (CGs)	1,142	0.69%
Dispensary Agents (DA)	7,529	4.55%
Total	165,555	100.00%

*Note: For caregivers and dispensary agents, these data reflect unique individuals, not the number of cards.

Table 1b. Arizona Medical Marijuana Licensed Qualifying Patients, Designated Caregivers and Dispensary Agents Profile

Applications Approved Cardholder Profile	Totals	Percent Total
Qualifying patients (QPs)	153,279	94.86%
Caregivers (CGs)	1,082	0.67%
Dispensary Agents (DA)	7,226	4.47%
Total	161,587	100.00%

*Note: For caregivers and dispensary agents, these data reflect unique individuals, not the number of cards.

Table 2. Arizona Medical Marijuana Licensed Qualifying Patient Profile

Applications Approved for Qualifying Patients	Totals	Percent Total
New applications	85,624	55.86%
Renewal applications	58,729	38.32%
Changed demographics	3,463	2.26%
Added Caregivers	182	0.12%
Change Dup	5,246	3.42%
Replaced Caregivers	28	0.02%
Removed Caregivers	7	0.00%
Total	153,279	100.00%

Table 3a. Arizona Medical Marijuana Applications Received- Patient Characteristics

Characteristics of Applications Received who are Qualified Patients	Totals (N = 156,884)	Percent Total
Patient Age-groups		
Less than 18 years	143	0.09%
18 to 30 years	41,677	26.57%
31 to 40 years	33,672	21.46%
41 to 50 years	24,768	15.79%
51 to 60 years	24,000	15.30%
61 to 70 years	23,653	15.08%
71 to 80 years	7,657	4.88%
81 and older	1,314	0.84%
Patient Gender		
Male	93,440	59.56%
Female	63,444	40.44%

Table 3b. Arizona Medical Marijuana Licensed Qualifying Patient Characteristics

Characteristics of Approved Applications who are Qualified Patients	Totals (N = 153,279)	Percent Total
Patient Age-groups		
Less than 18 years	131	0.09%
18 to 30 years	40,833	26.64%
31 to 40 years	32,889	21.46%
41 to 50 years	24,176	15.77%
51 to 60 years	23,436	15.29%
61 to 70 years	23,079	15.06%
71 to 80 years	7,464	4.87%
81 and older	1,271	0.83%
Patient Gender		
Male	91,316	59.58%
Female	61,963	40.42%

Figure 1a. Arizona Medical Marijuana Applications Received- Patient Characteristics by Gender and Age

(N =156,844)

■ Females (N=63,444) ■ Males (N=93,440)

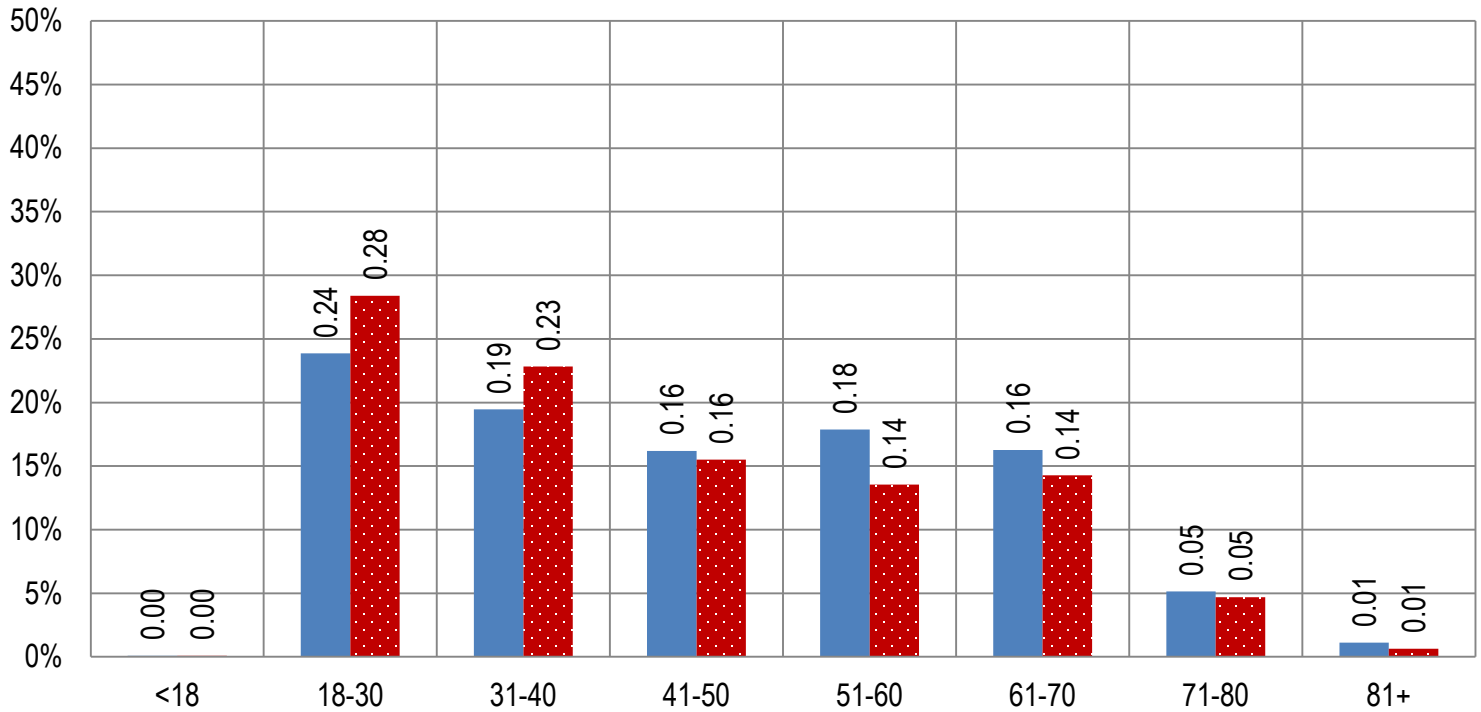


Figure 1b. Arizona Medical Marijuana Licensed Qualifying Patient Characteristics by Gender and Age

(N =153,279)

■ Females (N=61,963) ■ Males (N=91,316)

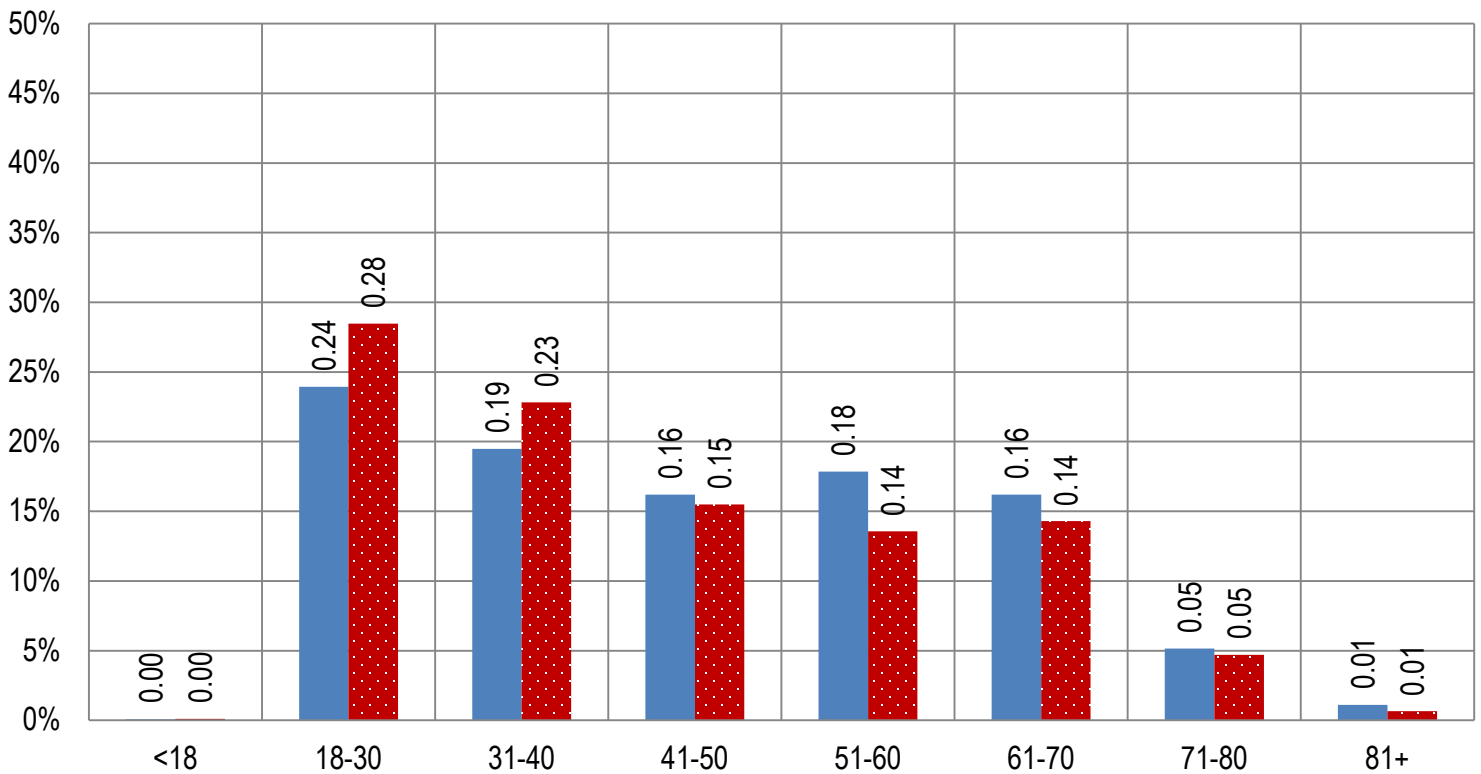


Figure 2a. Arizona Medical Marijuana Applications Received- Caregivers Characteristics by Gender and Age

(N = 1,142)

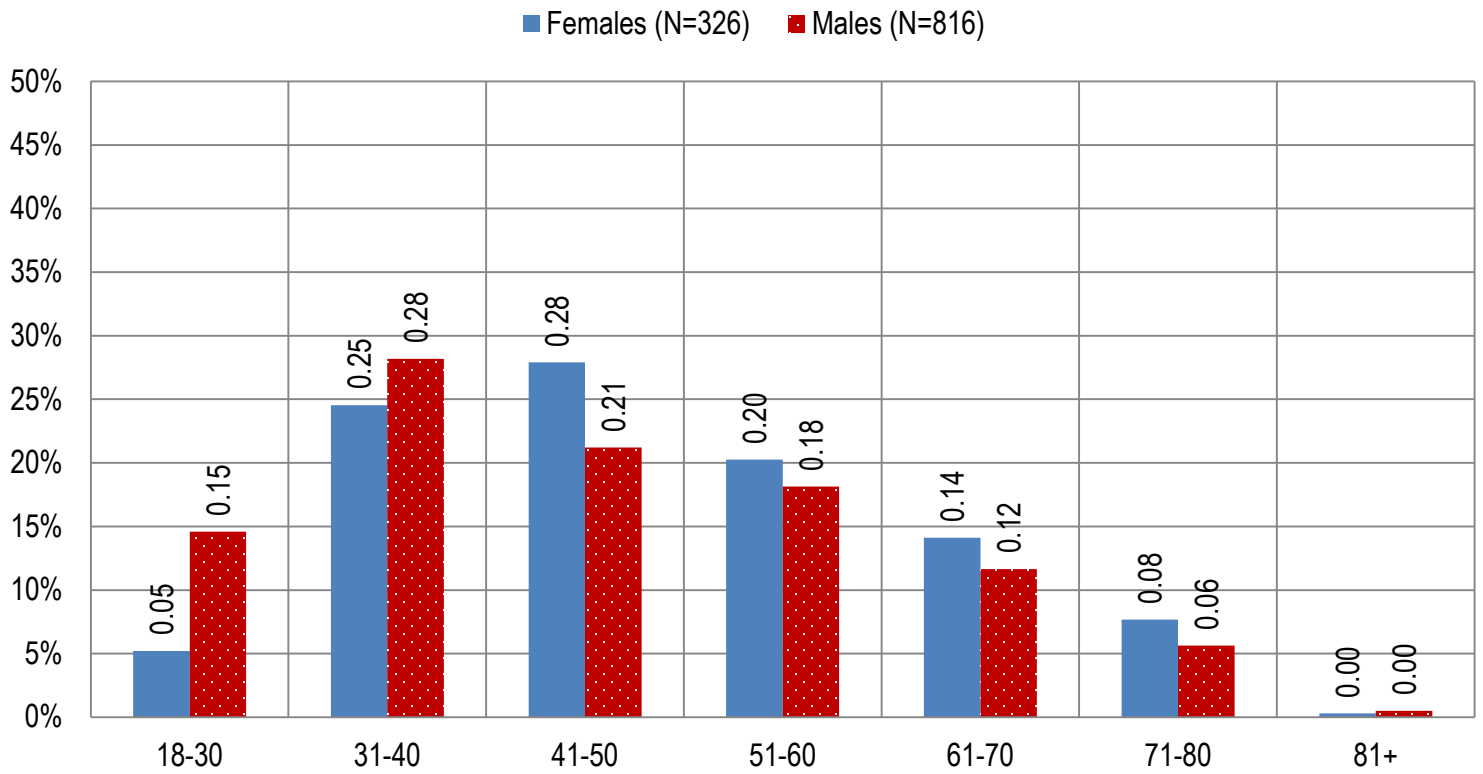


Figure 2b. Arizona Medical Marijuana Licensed Caregivers Characteristics by Gender and Age

(N = 1,082)

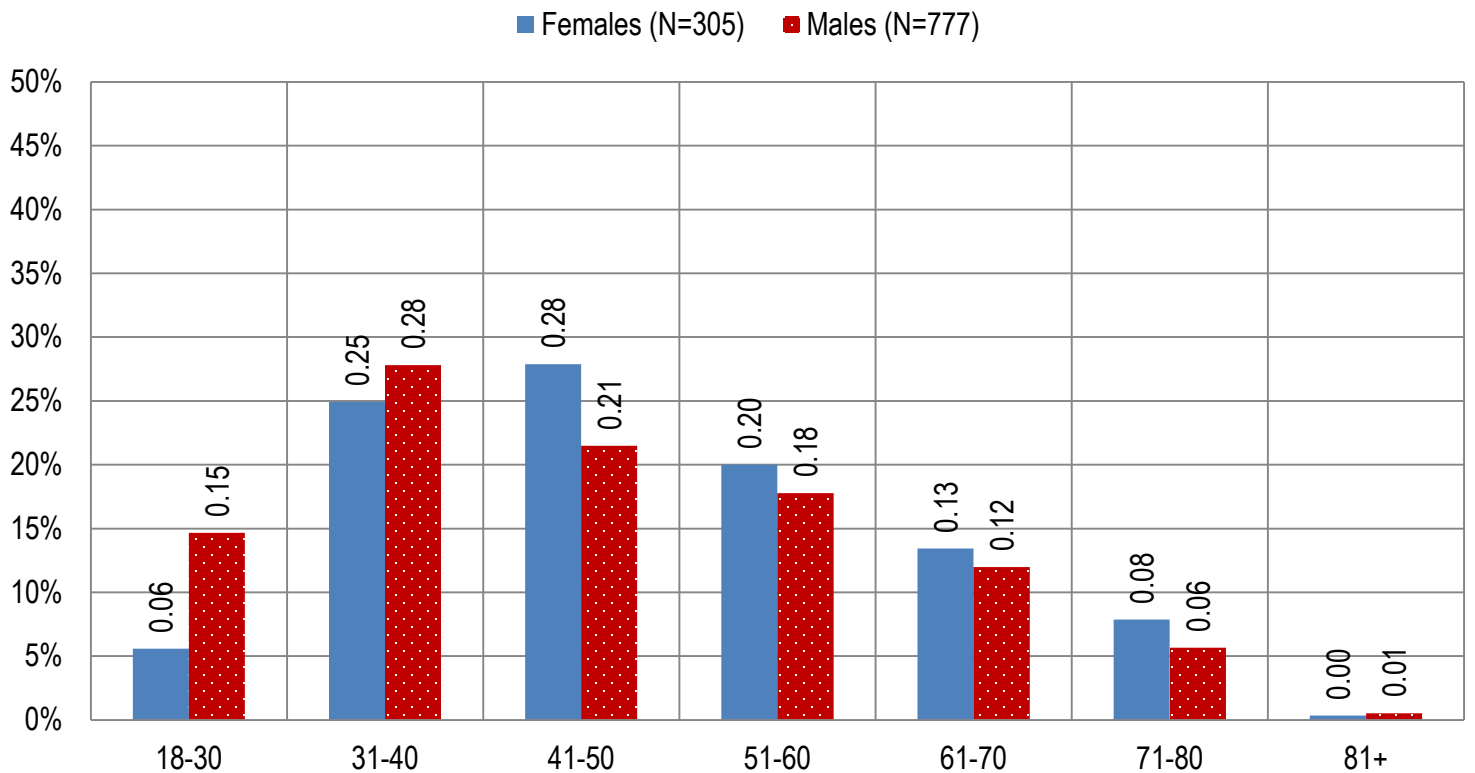


Table 4a. Arizona Medical Marijuana Applications Received- Patient Medical Conditions Profile

Patient medical condition profile of Applications Received [¶]	Totals	Percent Total
Alzheimer's	66	0.04%
Cachexia	86	0.05%
Cancer	2,768	1.76%
Chronic Pain	140,268	89.41%
Crohn's Disease	457	0.29%
Glaucoma	775	0.49%
Hepatitis C	521	0.33%
HIV/AIDS	525	0.33%
Muscle Spasms	653	0.42%
Nausea	598	0.38%
Post-Traumatic Stress Disorder (PTSD)	1,828	1.17%
Sclerosis	20	0.01%
Seizures	889	0.57%
Two Or More Conditions	7,430	4.74%
TOTAL	156,884	100.00%

[¶]Unique debilitating conditions

Table 4b. Arizona Medical Marijuana Licensed Qualifying Patients Medical Conditions Profile

Patient medical condition profile of Applications Approved [¶]	Totals	Percent Total
Alzheimer's	64	0.04%
Cachexia	84	0.05%
Cancer	2,696	1.76%
Chronic Pain	137,071	89.43%
Crohn's Disease	447	0.29%
Glaucoma	756	0.49%
Hepatitis C	517	0.34%
HIV/AIDS	510	0.33%
Muscle Spasms	638	0.42%
Nausea	582	0.38%
Post-Traumatic Stress Disorder (PTSD)	1,795	1.17%
Sclerosis	19	0.01%
Seizures	861	0.56%
Two Or More Conditions	7,239	4.72%
TOTAL	153,279	100.00%

[¶]Unique debilitating conditions

Table 5a. Arizona Medical Marijuana Applications Received for Applicants Seeking Authorization to Cultivate

Applications Received for cardholders with cultivation status	Totals	Percent total
Qualifying patients (n = 156,884)	1,735	1.11%

Table 5b. Arizona Medical Marijuana Licensed Qualifying Patients and Designated Caregivers Authorized for Cultivation

Approved cardholders cultivation status	Totals	Percent total
Qualifying patients (n = 153,279)	1,735	1.13%

Table 7a. Type and Amount of Transactions at Medical Marijuana Dispensaries in 2019 to Date

Type of Transaction [†]	Ounces (oz.)	Pounds
Marijuana	1,528,575.70	95,535.98
Marijuana Edible	63,543.88	3,971.49
Marijuana Other	91,745.38	5,734.09
Total Marijuana Sold	1,683,864.97	105,241.56

[†] Amounts have been rounded and may not added to exact totals

Figure 5. Transactions and Amount of Marijuana Sold in 2019 by Month

