

## Arizona Medical Marijuana Program March 2020 Monthly Report

In December 2010, Arizona voters passed the Arizona Medical Marijuana Act (AMMA), A.R.S. §36-2801 *et seq.* The AMMA went into effect on April 14, 2011, making Arizona the fourteenth state to adopt a medical marijuana law. The AMMA designates the Arizona Department of Health Services (ADHS) as the licensing and issuing authority for the Arizona Medical Marijuana Program.

The AMMA monthly report highlights the most current program statistics. This includes data on active medical marijuana cardholders as well as transaction data from the sale of medical marijuana at non-profit medical marijuana dispensaries. Tables 1 through 6 and Figures 1 through 3 reflect data that are point-in-time. Table 7 and Figure 4 are data from the month of March, 2020. The Year-To-Date section which follows shows cumulative applications and approvals for 2020. For further information and statistics, please reference the Arizona Medical Marijuana Annual Report.

**Table 1. Arizona Medical Marijuana Active Qualifying Patients, Designated Caregivers and Dispensary Agents Profile**

Active Cardholder's Profile	Totals	Percent Total
1. Qualifying patients (QPs)	230,317	96.72%
2. Caregivers (CGs)	704	0.30%
3. Dispensary Agents (DA)	7,117	2.98%
<b>Total</b>	<b>238,138</b>	<b>100.00%</b>

\*Note: For caregivers and dispensary agents, these data reflect unique individuals, not the number of cards.

**Table 2. Arizona Medical Marijuana Active Qualifying Patients Profile**

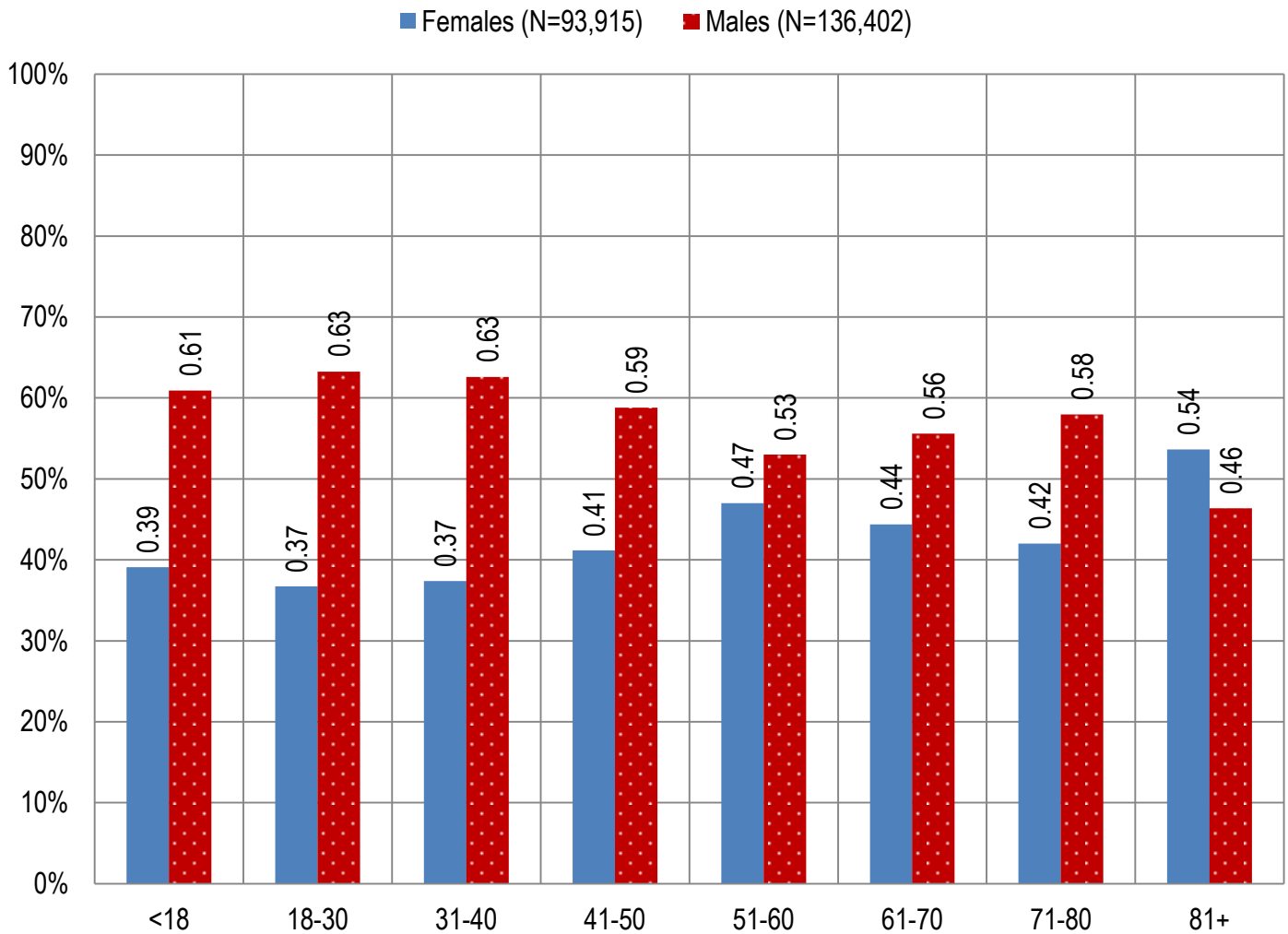
Application profile of qualifying patients	Totals	Percent Total
1. New applications	135,302	58.75%
2. Renewal applications	88,440	38.40%
3. Changed demographics	3,183	1.38%
4. Added Caregivers	180	0.08%
5. Change Dup	3,201	1.39%
6. Replaced Caregivers	10	0.00%
7. Removed Caregivers	1	0.00%
<b>Total</b>	<b>230,317</b>	<b>100.00%</b>

Approximately 11 percent (n = 26,999) of the active cardholders were determined to be SNAP eligible. Of the 26,999 that were determined to be eligible, 14,122 (~52%) were females and 12,877 (~48%) were males.

**Table 3. Arizona Medical Marijuana Active Qualifying Patients Characteristics**

Characteristics of Active Cardholders who are Qualified Patients	Totals (N =230,317)	Percent Total
<b>Patient Age-groups</b>		
Less than 18 years	174	0.08%
18 to 30 years	57,856	25.12%
31 to 40 years	49,663	21.56%
41 to 50 years	37,086	16.10%
51 to 60 years	34,884	15.15%
61 to 70 years	35,798	15.54%
71 to 80 years	12,844	5.58%
81 and older	2,012	0.87%
<b>Patient Gender</b>		
Male	136,402	59.22%
Female	93,915	40.78%

**Figure 1. Arizona Medical Marijuana Active Qualifying Patients Characteristics by Gender and Age (N = 230,317)**

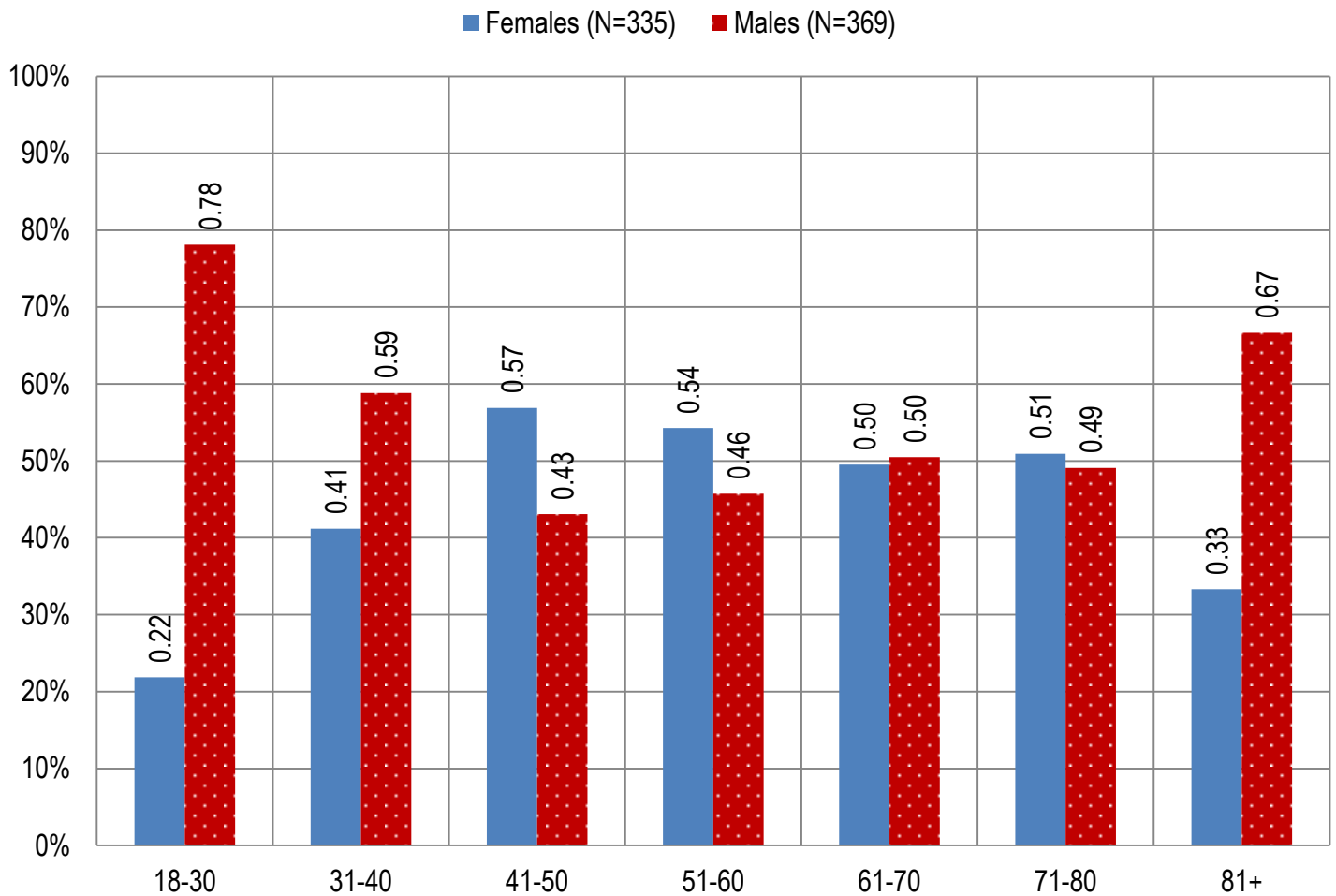


**Table 4. Arizona Medical Marijuana Active Qualifying Patients Medical Condition Profile**

Patient medical condition profile of Active Cardholders <sup>¶</sup>	Totals	Percent Total
Alzheimer's	71	0.03%
Cachexia	118	0.05%
Cancer	3,915	1.70%
Chronic Pain	207,420	90.06%
Crohn's Disease	621	0.27%
Glaucoma	1,074	0.47%
Hepatitis C	601	0.26%
HIV/AIDS	742	0.32%
Muscle Spasms	821	0.36%
Nausea	846	0.37%
Post-Traumatic Stress Disorder (PTSD)	2,605	1.13%
Sclerosis	37	0.02%
Seizures	1,195	0.52%
Two Or More Conditions	10,251	4.45%
<b>TOTAL</b>	<b>230,317</b>	<b>100.00%</b>

<sup>¶</sup>Unique debilitating conditions

**Figure 2. Arizona Medical Marijuana Active Designated Caregiver Characteristics by Gender and Age (N = 704)**



**Table 5. Arizona Medical Marijuana Active Qualifying Patients and Designated Caregivers Authorized for Cultivation**

Active cardholders cultivation status	Totals	Percent Total
Qualifying patients (n =230,317)	2,564	1.11%
Caregivers (n =704)	263	37.36%

**Table 6. Frequency of Qualifying Patients, Caregivers, and Dispensary Agents by County of Residence**

County	Qualifying Patients	Caregivers	Dispensary Agents*
Apache County	927	Count under 20	28
Cochise County	3,295	Count under 20	223
Coconino County	4,440	23	144
Gila County	2,078	Count under 20	41
Graham County	952	Count under 20	Count under 20
Greenlee County	246	Count under 20	Count under 20
La Paz County	339	Count under 20	Count under 20
Maricopa County	150,648	385	4,312
Mohave County	5,290	Count under 20	209
Navajo County	2,801	Count under 20	434
Pima County	31,185	124	711
Pinal County	14,132	34	266
Santa Cruz County	686	Count under 20	210
Yavapai County	11,272	51	414
Yuma County	2,026	Count under 20	Count under 20
<b>TOTAL</b>	<b>230,317</b>	<b>704</b>	<b>7,117</b>

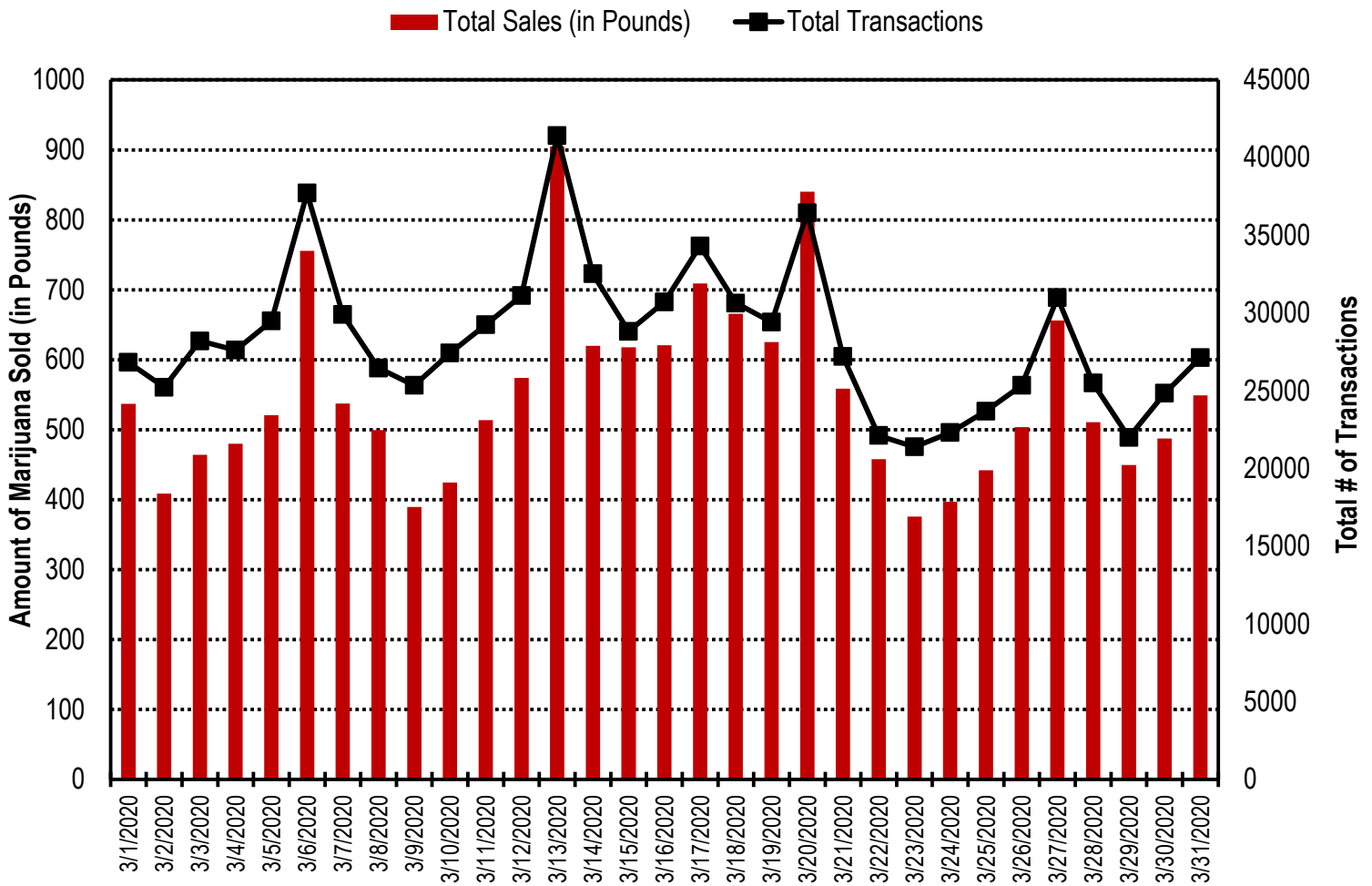
\* 80 Dispensary Agents are located outside of Arizona.

**Table 7. Type and Amount of Transactions at Medical Marijuana Dispensaries in March 2020**

Type of Transaction <sup>†</sup>	Ounces (oz.)	Pounds
Marijuana	246,527.49	15,407.97
Marijuana Edible	8,190.42	511.90
Marijuana Other	18,801.09	1,175.07
<b>Total Marijuana Sold</b>	<b>273,518.99</b>	<b>17,094.94</b>

<sup>†</sup> Amounts have been rounded and may not added to exact totals

Figure 4. Daily Transactions and Amount of Marijuana Sold in March, 2020



**YEAR TO DATE**

**Table 1a. Arizona Medical Marijuana Applications Received- Application Profile**

<b>Applications Received Cardholder Profile</b>	<b>Totals</b>	<b>Percent Total</b>
Qualifying patients (QPs)	69,139	94.55%
Caregivers (CGs)	317	0.43%
Dispensary Agents (DA)	3,666	5.01%
<b>Total</b>	<b>73,122</b>	<b>100.00%</b>

\*Note: For caregivers and dispensary agents, these data reflect unique individuals, not the number of cards.

**Table 1b. Arizona Medical Marijuana Licensed Qualifying Patients, Designated Caregivers and Dispensary Agents Profile**

<b>Applications Approved Cardholder Profile</b>	<b>Totals</b>	<b>Percent Total</b>
Qualifying patients (QPs)	68,757	95.29%
Caregivers (CGs)	269	0.37%
Dispensary Agents (DA)	3,130	4.34%
<b>Total</b>	<b>72,156</b>	<b>100.00%</b>

\*Note: For caregivers and dispensary agents, these data reflect unique individuals, not the number of cards.

**Table 2. Arizona Medical Marijuana Licensed Qualifying Patient Profile**

<b>Applications Approved for Qualifying Patients</b>	<b>Totals</b>	<b>Percent Total</b>
New applications	40,001	58.18%
Renewal applications	27,847	40.50%
Changed demographics	418	0.61%
Added Caregivers	63	0.09%
Change Dup	426	0.62%
Replaced Caregivers	2	0.00%
Removed Caregivers	0	0.00%
<b>Total</b>	<b>68,757</b>	<b>100.00%</b>

**Table 3a. Arizona Medical Marijuana Applications Received- Patient Characteristics**

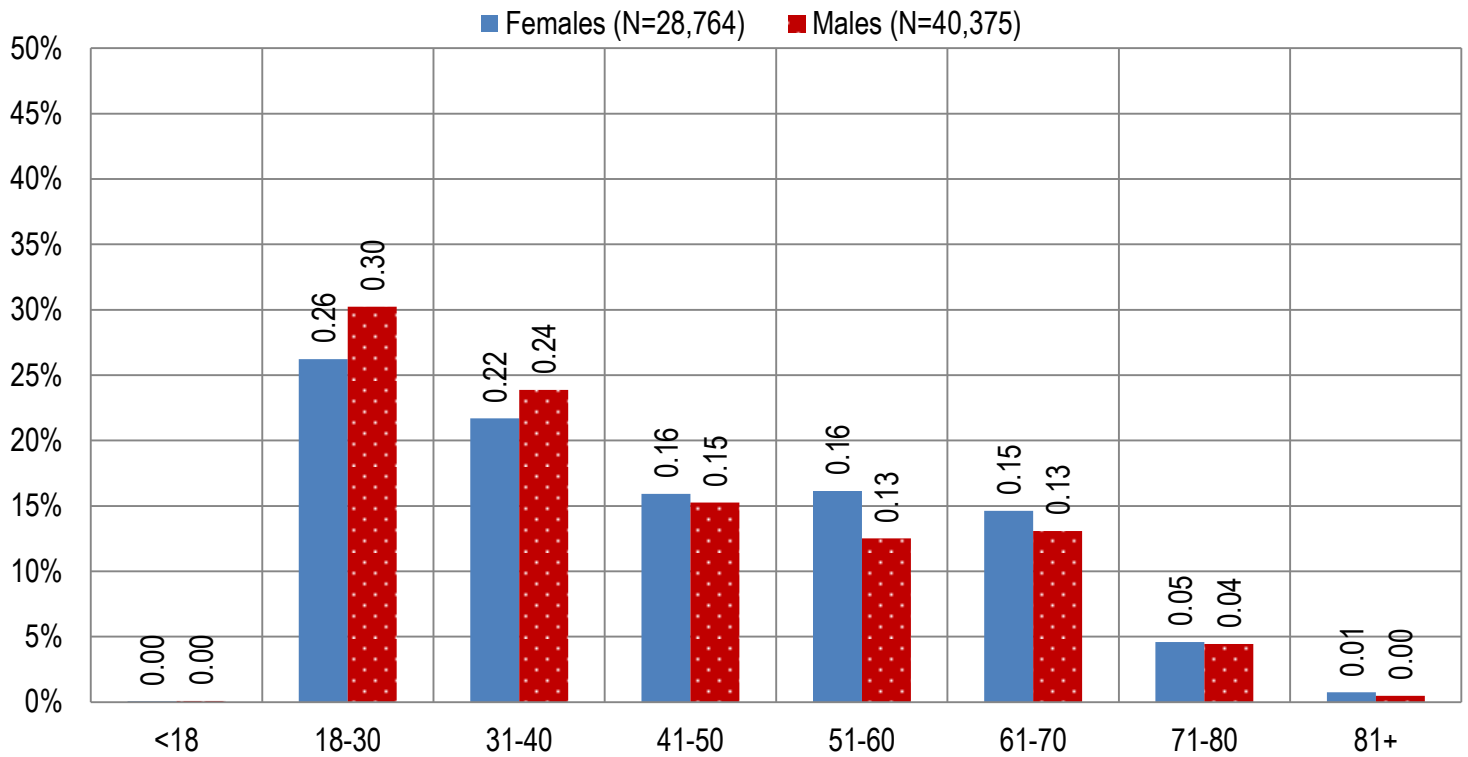
<b>Characteristics of Applications Received who are Qualified Patients</b>	<b>Totals (N = 69,139)</b>	<b>Percent Total</b>
<b>Patient Age-groups</b>		
Less than 18 years	50	0.07%
18 to 30 years	19,757	28.58%
31 to 40 years	15,881	22.97%
41 to 50 years	10,741	15.54%
51 to 60 years	9,698	14.03%
61 to 70 years	9,487	13.72%
71 to 80 years	3,114	4.50%
81 and older	411	0.59%
<b>Patient Gender</b>		
Male	40,375	58.40%
Female	28,764	41.60%

**Table 3b. Arizona Medical Marijuana Licensed Qualifying Patient Characteristics**

<b>Characteristics of Approved Applications who are Qualified Patients</b>	<b>Totals (N = 68,757)</b>	<b>Percent Total</b>
<b>Patient Age-groups</b>		
Less than 18 years	33	0.05%
18 to 30 years	19,674	28.61%
31 to 40 years	15,803	22.98%
41 to 50 years	10,672	15.52%
51 to 60 years	9,637	14.02%
61 to 70 years	9,443	13.73%
71 to 80 years	3,088	4.49%
81 and older	407	0.59%
<b>Patient Gender</b>		
Male	40,179	58.44%
Female	28,578	41.56%

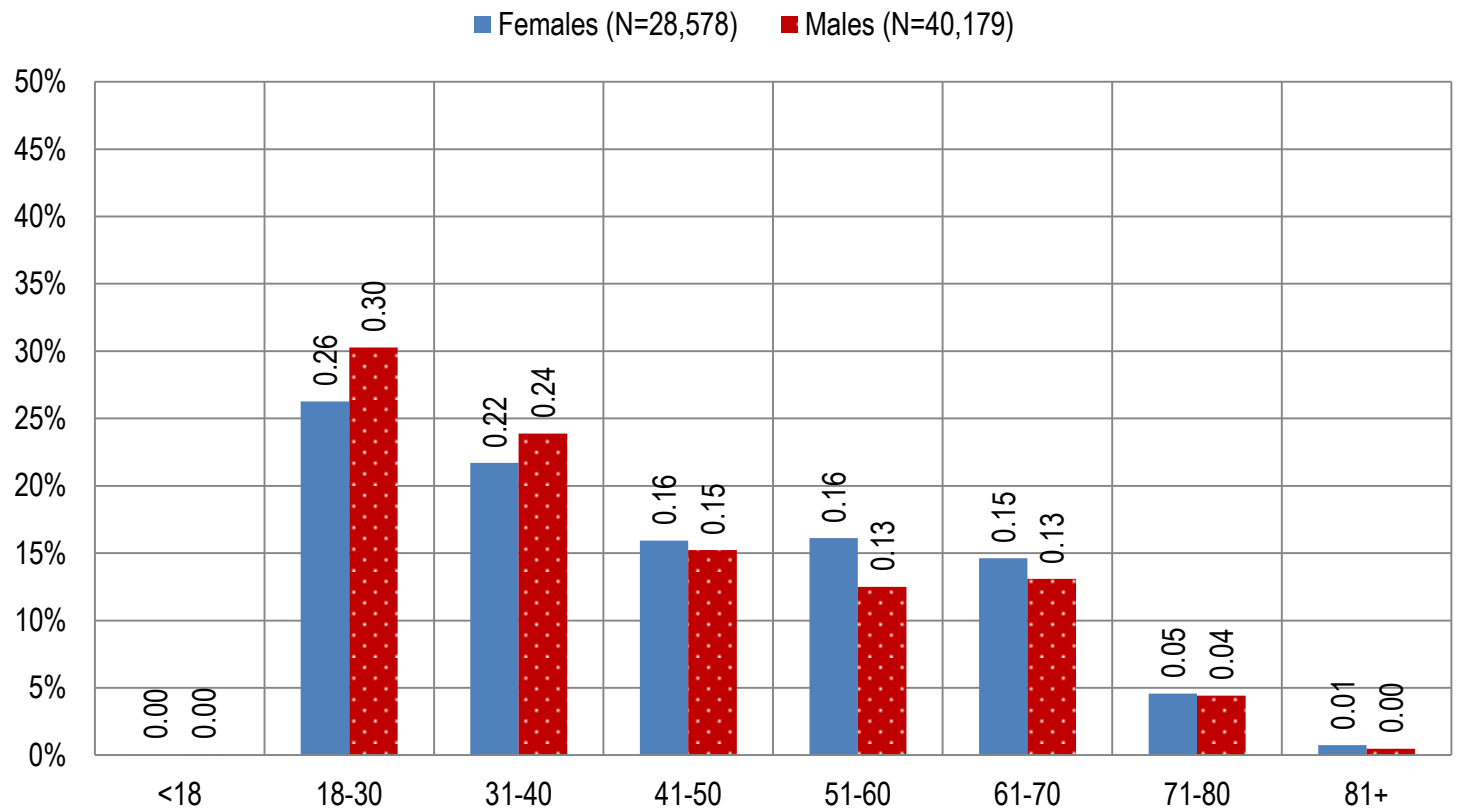
**Figure 1a. Arizona Medical Marijuana Applications Received- Patient Characteristics by Gender and Age**

**(N =69,139)**



**Figure 1b. Arizona Medical Marijuana Licensed Qualifying Patient Characteristics by Gender and Age**

**(N =68,757)**

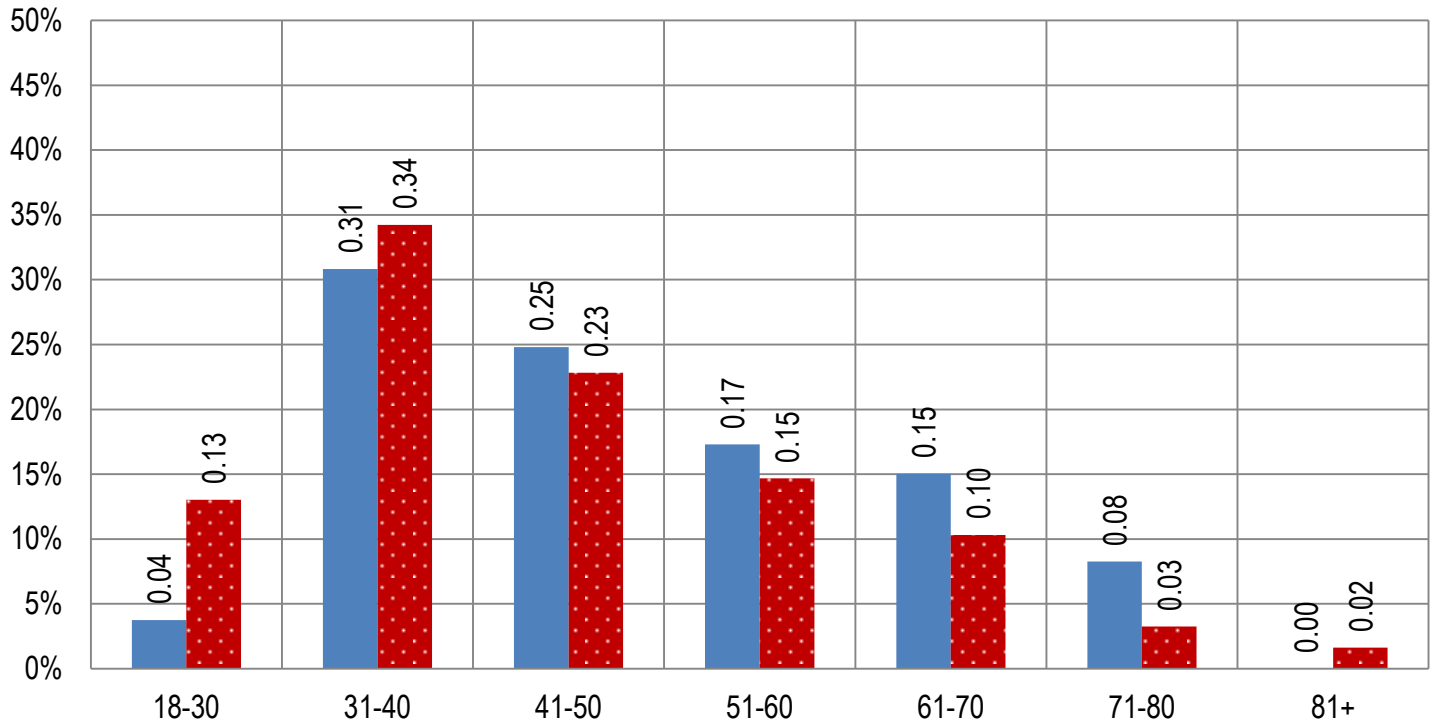




**Figure 2a. Arizona Medical Marijuana Applications Received- Caregivers Characteristics by Gender and Age**

**(N = 317)**

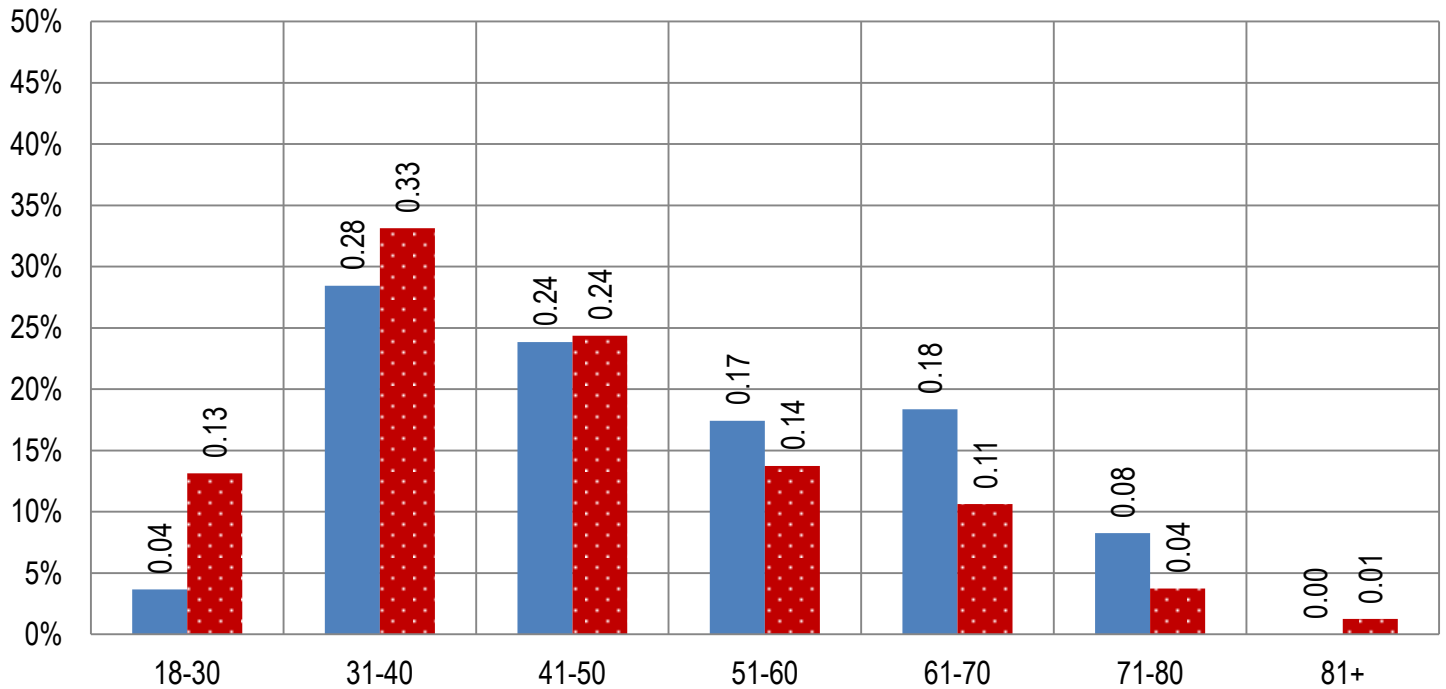
■ Females (N=133) ■ Males (N=184)



**Figure 2b. Arizona Medical Marijuana Licensed Caregivers Characteristics by Gender and Age**

**(N = 269)**

■ Females (N=109) ■ Males (N=160)



**Table 4a. Arizona Medical Marijuana Applications Received- Patient Medical Conditions Profile**

Patient medical condition profile of Applications Received <sup>¶</sup>	Totals	Percent Total
Alzheimer's	19	0.03%
Cachexia	31	0.04%
Cancer	955	1.38%
Chronic Pain	63,061	91.21%
Crohn's Disease	164	0.24%
Glaucoma	278	0.40%
Hepatitis C	186	0.27%
HIV/AIDS	202	0.29%
Muscle Spasms	197	0.28%
Nausea	219	0.32%
Post-Traumatic Stress Disorder (PTSD)	757	1.09%
Sclerosis	10	0.01%
Seizures	328	0.47%
Two Or More Conditions	2,732	3.95%
<b>TOTAL</b>	<b>69,139</b>	<b>100.00%</b>

<sup>¶</sup>Unique debilitating conditions

**Table 4b. Arizona Medical Marijuana Licensed Qualifying Patients Medical Conditions Profile**

Patient medical condition profile of Applications Approved <sup>¶</sup>	Totals	Percent Total
Alzheimer's	19	0.03%
Cachexia	31	0.05%
Cancer	939	1.37%
Chronic Pain	62,770	91.29%
Crohn's Disease	164	0.24%
Glaucoma	276	0.40%
Hepatitis C	181	0.26%
HIV/AIDS	201	0.29%
Muscle Spasms	192	0.28%
Nausea	218	0.32%
Post-Traumatic Stress Disorder (PTSD)	749	1.09%
Sclerosis	10	0.01%
Seizures	319	0.46%
Two Or More Conditions	2,688	3.91%
<b>TOTAL</b>	<b>68,757</b>	<b>100.00%</b>

<sup>¶</sup>Unique debilitating conditions

**Table 5a. Arizona Medical Marijuana Applications Received for Applicants Seeking Authorization to Cultivate**

Applications Received for cardholders with cultivation status	Totals	Percent total
Qualifying patients (n = 69,139)	751	1.09%

**Table 5b. Arizona Medical Marijuana Licensed Qualifying Patients and Designated Caregivers Authorized for Cultivation**

Approved cardholders cultivation status	Totals	Percent total
Qualifying patients (n =68,757)	751	1.09%

**Table 7a. Type and Amount of Transactions at Medical Marijuana Dispensaries in 2020 to Date**

Type of Transaction <sup>†</sup>	Ounces (oz.)	Pounds
Marijuana	436,670.50	27,291.91
Marijuana Edible	14,359.72	897.48
Marijuana Other	31,989.30	1,999.33
<b>Total Marijuana Sold</b>	<b>483,019.52</b>	<b>30,188.72</b>

<sup>†</sup> Amounts have been rounded and may not added to exact totals

**Figure 5. Transactions and Amount of Marijuana Sold in 2020 by Month**

