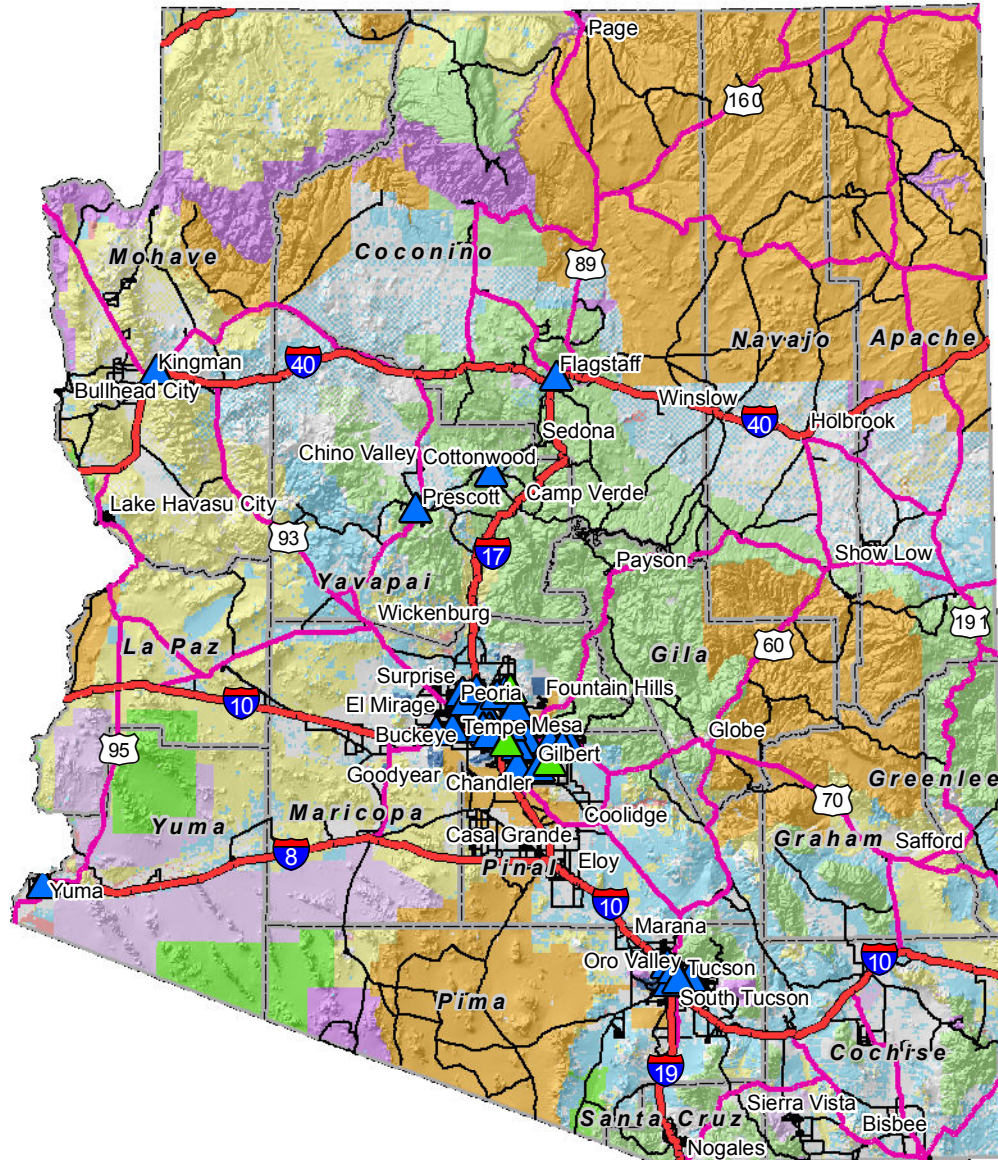
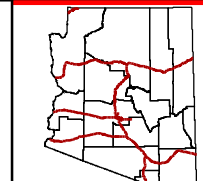
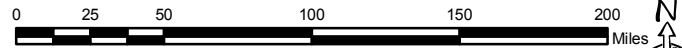


Arizona Cardiac Centers



- Cardiac Receiving Center
- Cardiac Referral Center
- AZ Interstates
- AZ Major Roads
- AZ Minor Roads
- AZ Counties
- BLM
- National Forest
- Indian Reservation
- Military
- National Parks
- Other
- Private
- Local or State Parks
- State Trust
- Wildlife Refuge

1 inch = 65 miles





 Guardian Medical Transport

 1200 North Beaver Street

 Flagstaff, Arizona 86001

 (928) 213-6274 2/18/2011

 aaron.seifert@nahealth.com

 www.flagstaffmedicalcenter.com

 C:\GIS_Data\Maps\AED\Cardiac Centers v10.mxd

This map has been provided for informational purposes only. Every effort has been made to ensure this map is as accurate as possible. Guardian Medical Transport and Flagstaff Medical Center shall assume no liability for the base information contained in this map.