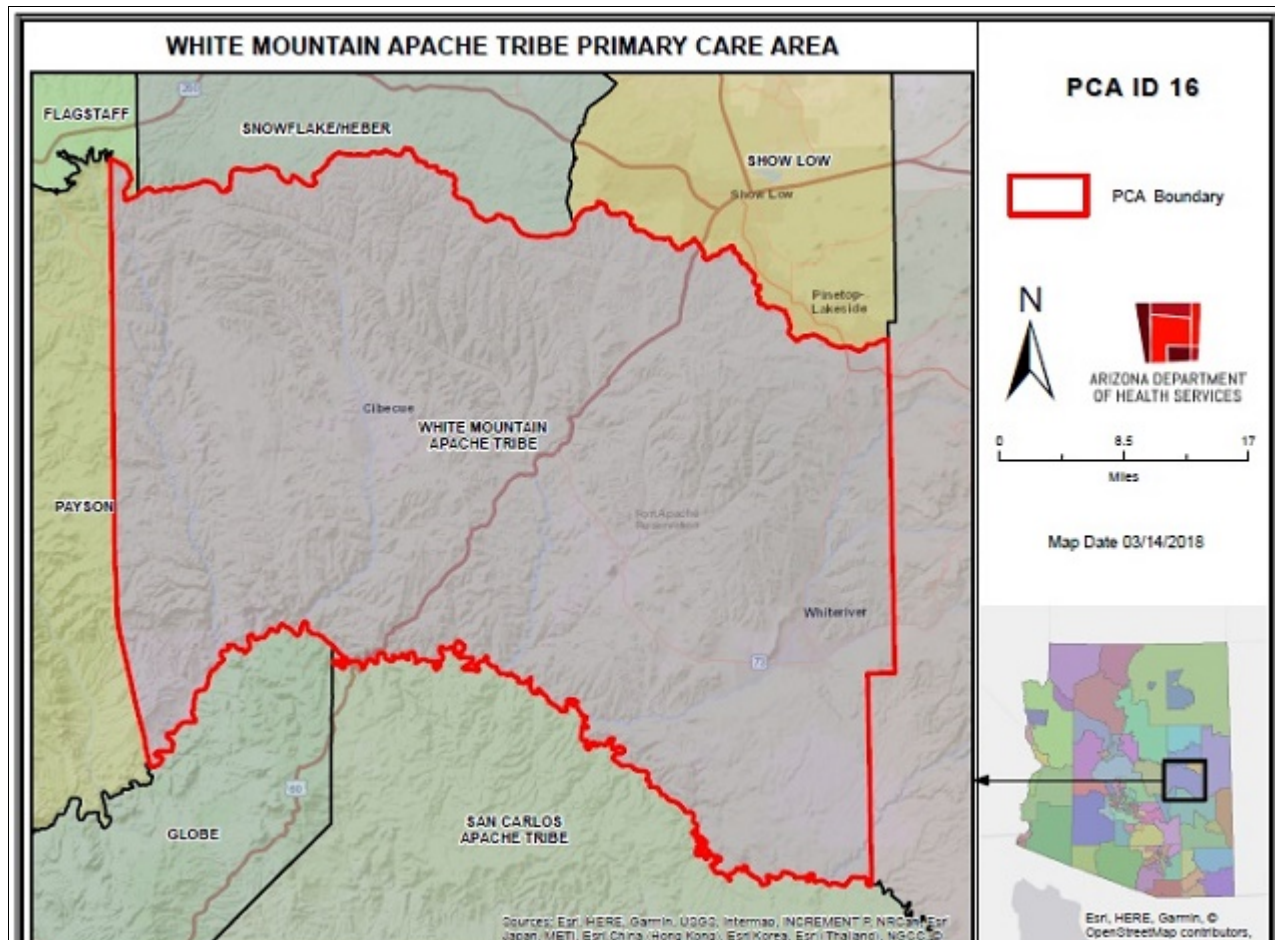


White Mountain Apache Tribe Primary Care Area (PCA) 2021 STATISTICAL PROFILE

For definitions and sources of data used in these profiles, see:

<http://www.azdhs.gov/documents/prevention/health-systems-development/data-reports-maps/reports/datadocu.pdf>

DESCRIPTION OF AREA	Value
PCA Number	16
Major Population Center	Whiteriver
County	GILA, NAVAJO
Health Planning Region	1, 3
Primary Care Score	48
Rural Code Designation:	INDIAN
Special Tax District?	No
State House Legislative District	6, 7
Designated as AzMUA?	Yes
Designated as Primary Care HPSA	Geographic, (White Mountain Apache Tribe)
Designated as Federal MUA/P	50.9, MUA, (Gila County), 38.10, MUA, (Navajo County)
Next Nearest Provider	Lakeside
2nd Nearest Provider	Show Low
Travel Distance to Next Nearest Provider	25.73 miles
Travel Distance to 2nd Nearest Provider...	34.38 miles



DEMOGRAPHICS		HEALTH PLANNING REGION	ARIZONA
	White Mountain Apache Tribe	COUNTY	
POPULATION	13,924	161,273	5,562,838
Population Density	7.5	10.9	82.6
Persons By Age			
0-14	4,715	33,281	1,080,177
15-19	1,146	10,099	374,333
20-44	4,741	44,692	1,859,412
45-64	3,498	41,084	1,342,227
65-84	923	32,124	815,967
85 +	72	3,165	100,196
Race/Ethnicity			
White	2.2%	64.3%	74.9%
American Indian	96.1%	30.0%	4.3%
Black	0.1%	0.8%	4.5%
Asian/Pacific Islander	0.6%	0.7%	3.4%
Other	1.0%	4.2%	12.9%
Hispanic	1.0%	12.5%	28.4%
Communities of Color	98.8%	51.5%	45.9%
Gender			
Females	50.1%	50.1%	50.4%
Males	49.9%	49.9%	49.6%
Single Parent Families	46.5%	31.4%	26.6%
Female Headed Households	33.9%	27.4%	26.0%
Disability Population	19.6%	19.6%	12.4%
Speak Other Than English at Home	52.3%	29.7%	25.8%
INCOME			
Population below 100% FPL	39.5%	23.5%	13.4%
Population below 200% FPL	65.7%	46.9%	31.4%
Median Household Income	\$33,409	\$39,671	\$66,264
Children <12 in Poverty	50.9%	36.3%	19.7%
EDUCATION			
Less Than 9th Grade Education	26.1%	4.5%	4.9%
9th-12th Grade, No Diploma	5.9%	9.9%	6.6%
High School Graduate	31.6%	28.9%	23.5%
Some College	25.3%	30.1%	24.6%
College or Professional Degree Holder	10.6%	25.8%	40.2%
MISCELLANEOUS			
Overnight Tourist Visits	413,355	4,713,854	36,699,975
Unemployed	44.8%	21.2%	9.1%
"Uninsured" Births	3.7%	4.5%	2.0%
Medicare Beneficiaries	94.9%	97.8%	96.1%
Medically Uninsured	14.1%	12.2%	10.9%
Transportation Score	195	129	115

RESOURCES	White Mountain Apache Tribe	COUNTY	HEALTH PLANNING REGION	ARIZONA
FACILITIES				
General Hospitals	No	4	49	71
Hospital Beds/1000 Residents	0.0	1.1	1.7	1.9
Designated as Sole Community Provider?	No	4	36	56
Specialty Beds	0	16	3,029	3,645
Skilled Nursing Facilities	0	5	74	102
Nursing Beds	0	594	8,317	11,632
SERVICES				
Licensed Home Health Agencies	0	4	130	179
Ambulatory Care Sites Type	B, D, E	A, B, C, D, E	A, B, C, D, E	A,B,C,D,E
Licensed Pharmacies	0	28	1,012	1,332
Certified Ambulance Services	0	11	60	106
PERSONNEL				
Primary Care Providers	20.0	149	7,370	9,751
Ratio-Population:Provider	696 :1	1,082:1	755 :1	747 :1
Nurse Practitioners	3	239	7,173	9,932
Physician Assistants	1	65	2,631	3,049
Registered Nurses	15	1,471	62,204	80,111
Midwives	0	6	230	312
Dentists	0	58	3,529	4,325
UTILIZATION				
AMBULATORY CARE SENSITIVE CONDITIONS				
ACSS/1000 Residents Age <65	36.3	44.4	33.8	34.5
Points Above/Below (-) Statewide Average	1.8	9.9	-0.8	***
HOSPITALIZATION				
Inpatient Days/1000 Residents	1,126	776	566	570
Inpatient Days/1000 by Age Group:				
0-14 yrs	426	367	320	320
15-19 yrs	748	448	292	285
20-44 yrs	1,224	656	411	400
45-64 yrs	1,304	857	602	611
65-84 yrs	2,429	1,189	1,144	1,122
85+ yrs	2,024	1,497	1,829	1,815
Leading Diagnosis	Acute upper respiratory i			
Leading Procedure	Performance of Urinary Filtration, Intermittent, Less th			
(Non-maternity related)				
*** Not Applicable, ++ Insufficient Data, ## Not Available				

HEALTH STATUS	White Mountain Apache Tribe	COUNTY	HEALTH PLANNING REGION	ARIZONA
INFANT MORTALITY RATE	14.0	8.0	5.7	5.7
MORTALITY, LEADING CAUSE OF DEATH				
Infant	Motor- or nonmotor-vehicle accident, type of vehicl			
Child (1-14)	Asphyxiation			
Adolescent (15-19)	Intentional self-harm by hanging, strangulation and			
Young Adult (20-44)	Alcoholic liver disease			
Mid Age (45-64)	Alcoholic liver disease			
Elderly (65-84)	Cardiac arrest			
Aged (85+)	Unspecified dementia			
PERCENT PREMATURE MORTALITY	82.9%	61.6%	55.0%	54.9%
NATALITY				
Fertility Rate/1000 Females 15-44 yrs	89.2	74.5	61.6	61.4
Birth Rate/1000 Residents	19.9	11.7	12.1	11.8
0-4 Prenatal Care Visits/1000 Births	158.3	100.9	52.4	66.5
Prenatal Care Began:				
None	4.0%	4.2%	5.6%	5.6%
Trimester One	53.8%	64.2%	72.3%	70.4%
Trimester Two	30.2%	24.0%	17.0%	18.1%
Trimester Three	11.7%	7.5%	5.0%	5.9%
Unknown	0.3%	0.1%	0.1%	0.0%
Low-weight Births/1000 Live Births	112.8	85.7	72.9	72.8
Teen Births/1000 Females 14-19 yrs	53.8	30.8	19.9	20.2

Area Location IDs:

Census Tracts: 040079402.00, 040179401.00, 040179403.01, 040179403.02

Other Places in area:

Canyon Day, Carrizo, Cedar Creek, East Fork, Forestdale Trading Post, Fort Apache, Fort Apache Indian Reservation, Fort Apache Junction, Cibecue, Cibecue Creek, Deer Springs, Grasshopper, Hon Dah, Indian Pine, Sevenmile, Whiteriver

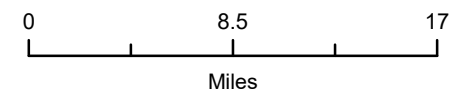
*** Not Applicable, ++ Insufficient Data, ## Not Available

WHITE MOUNTAIN APACHE TRIBE PRIMARY CARE AREA

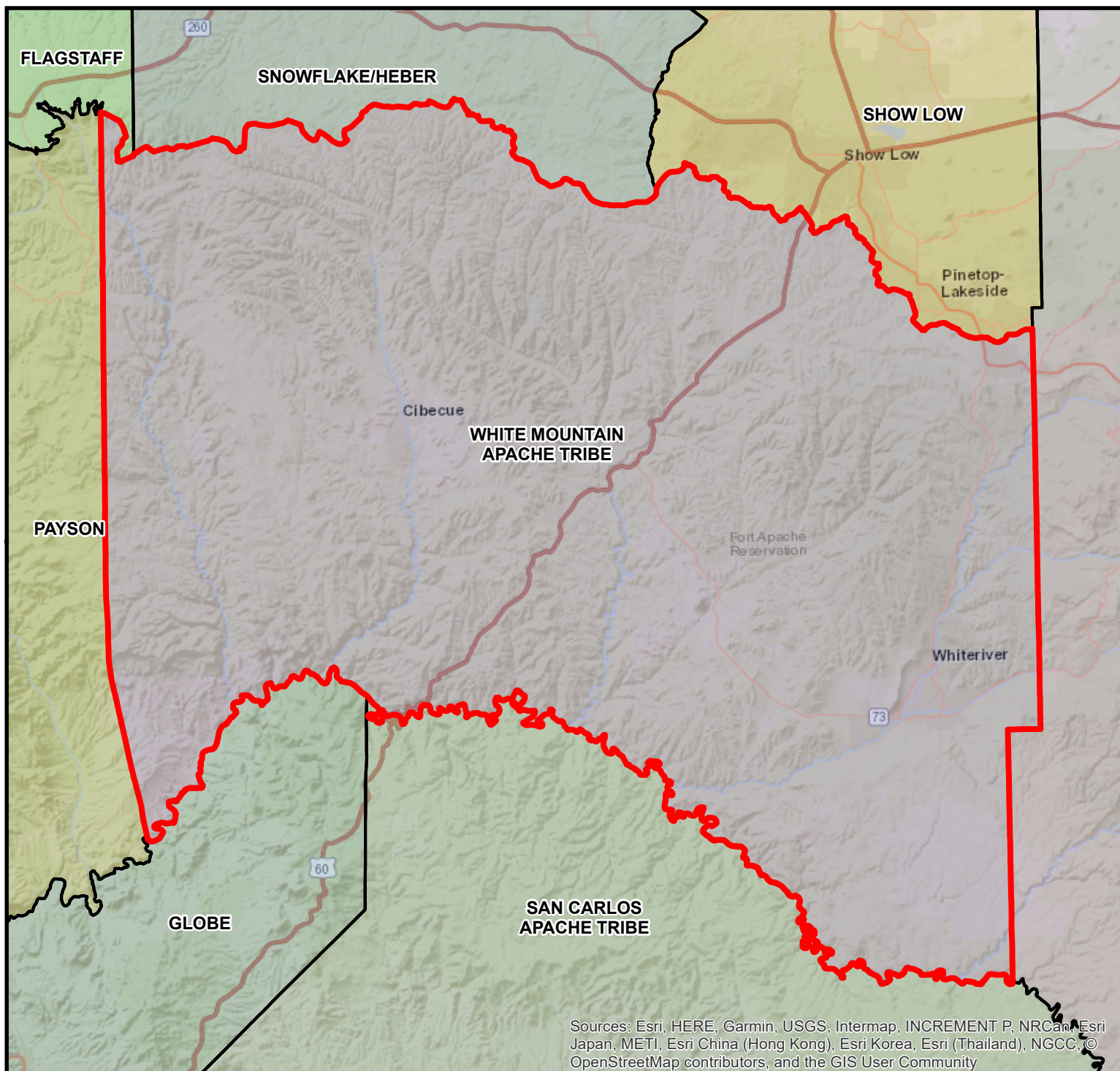
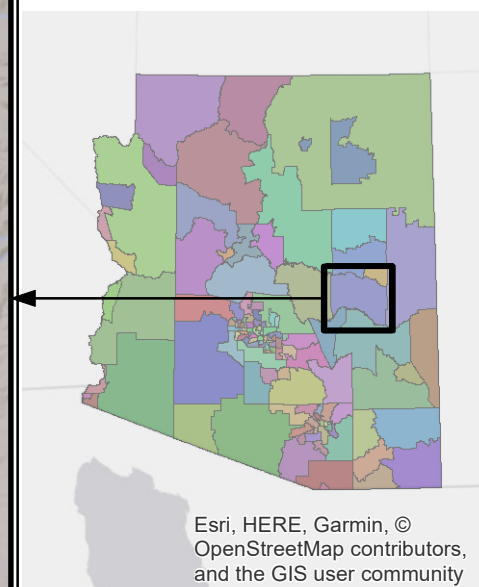
PCA ID 16



ARIZONA DEPARTMENT
OF HEALTH SERVICES



Map Date 03/14/2018



Sources: Esri, HERE, Garmin, USGS, Intermap, INCREMENT P, NRCan, Esri Japan, METI, Esri China (Hong Kong), Esri Korea, Esri (Thailand), NGCC, © OpenStreetMap contributors, and the GIS User Community

Esri, HERE, Garmin, ©
OpenStreetMap contributors,
and the GIS user community